

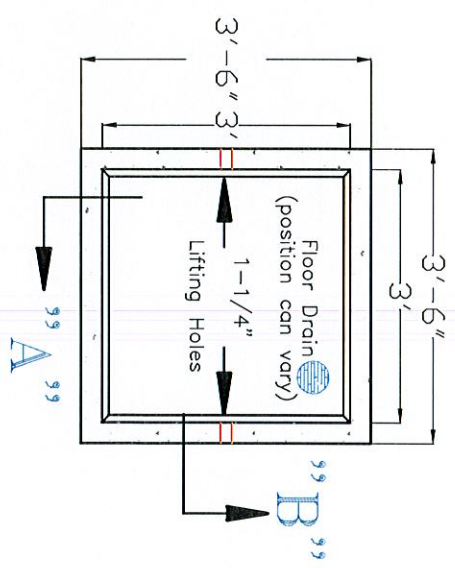
**A & L Vault Company**

P.O. Box 815  
111 E. Pryor St.  
Athens, AL 35612

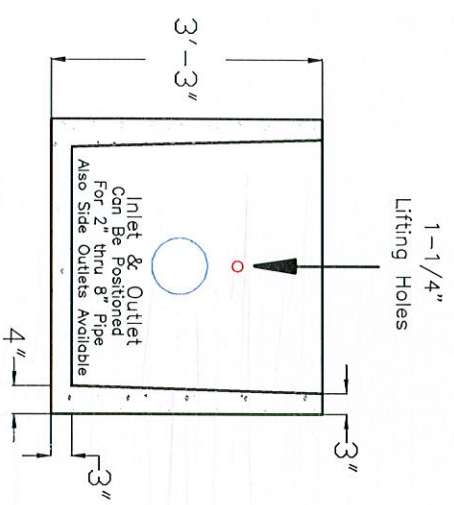
(256) 232-2100  
Scale 1/4" = 1"

**VAULT CONSTRUCTION FEATURES**

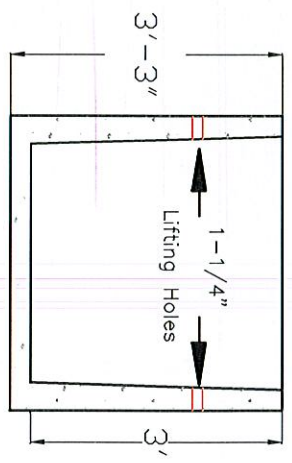
- 4,000 PSI Fiberglass Reinforced Concrete Mix
- #3 or #5 Rebar or As Specified
- 1-1/4" Lifting Holes
- Pipe Penetrations Sealed with Waterproofing



**TOP VIEW**



**SIDE VIEW "A"**



**SIDE VIEW "B"**

Please note that the dimensions are typical due to variations during the curing may have minute changes

**A&L-3636CV**

**A&L-3636CV**