

dcr  
Massachusetts



Borderland State Park  
**Interpretive Program**

---

257 Massapoag Avenue  
North Easton MA 02356  
508-238-6566

# Insect Discovery



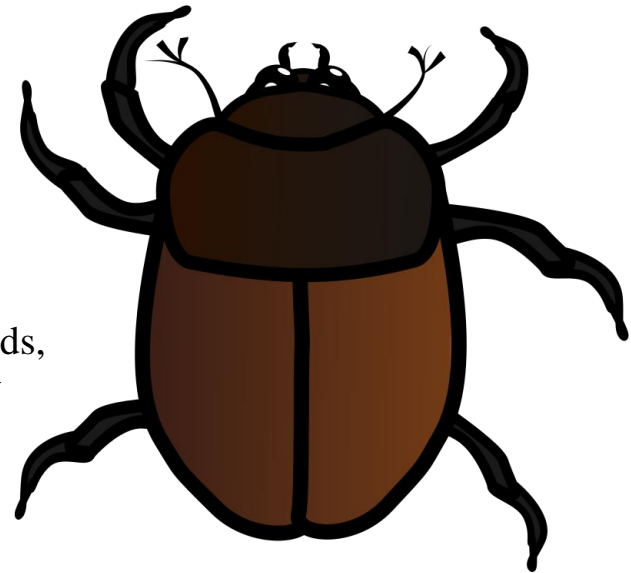
# Walk

Saturday, August 17<sup>th</sup>

10:00am-12:00pm

Meet at Visitor center

Dragonflies, ladybugs, crickets, butterflies, ants, aphids, and giant mystery beetles! A 2-hour insect discovery walk with experts will help you see them up close, hear their sounds and understand their amazing lifestyles.



Join entomologists Jane O'Donnell and Don Bennett at the Lawrence Newcomb Visitor Center. Bring your own field guide, bug box, insect net, hand lens – or borrow ours. We'll start at the Lawrence Newcomb Visitor Center. Wear long pants and sturdy shoes – no baby-strollers! Reasonable accommodation upon request.

# Coming Event