

# FARM AUCTION

## 28499 BOYD DUMP RD. - COLE CAMP, MO

As we have sold our farm, we will sell the following at auction located from 52 Hwy in Cole Camp, south on B 1.2 miles to Boyd Dump Rd, then ½ mile to sale on

## SAT. MARCH 14TH, 2020 - 10 AM



### TRUCK

2001 Dodge Ram 2500 Laramie SLT, 4x4, Cummins 24 valve Turbo diesel auto, new Michelin tires, **only 50,700** miles, one owner, w/Hoswel bale bed. Trucks like this are hard to find!



### PICKUP

2000 Chevy S-10 LS extended cab 110,000 miles



### TRACTORS

John Deere 5300 diesel w/JD 520 loader, tac shows 3942 hrs, 4 hydraulics, canopy



John Deere 1020 diesel, wide front, 2 hydraulics, tac shows 2483



1951 John Deere M, wide front, w/7' belly mower



### STOCK TRAILER

Coose 12' tandem axle livestock trailer, real nice



### FLATBED TRAILERS

16' tandem axle flatbed trailer



Starlite 10' flatbed trailer

### ATV

Polaris 300 four wheeler 2x4



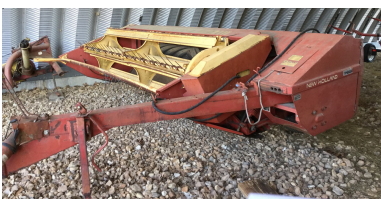
### LIVESTOCK FEEDERS

2 Big Bale Feeders, w/ cover, factory made  
5 Big Bale Rings 3 w/baskets  
Small Calf creep feeder  
2 Poly feed troughs  
Mineral feeder



### FARM EQUIPMENT

M&W 4590 hay baler, 4x5 bales, net wrap



New Holland 482 9' Hay Bine mower conditioner



New Holland 462 8' mower



Ogden 8 wheel rake, like new



G2LP Tedder



John Deere model L manure spreader, good floor

3 pt 6' Box blade

Howse 3 pt 7' brush cutter  
7' Pull type brush cutter  
10 Disk w/ 2' foldup ends  
2 Sect. Harrow • Tire Drag  
Danuser post hole digger. 10" auger

3 pt Big Bale spike  
Front end big bale spike

### HAY TRAILER

Big Bale trailer, 8 bale w/front dolly wheels

### MISC FARM ITEMS

### SHOP TOOLS

6- 16' Wire panels  
15 Sheets 14' corrugated metal  
Walkboard • B&D miter saw  
Old iron rake wheel  
2-245 / 75R16 tires  
Tire for JD M tractor  
Hay trolley for barn  
Crimp wire splicer, Fence post puller, Wire stretchers, wire unroller, post driver, used 6' posts, electric fence posts  
Double wheel grinder  
4x8 Steel frame work bench  
Antique work bench  
2 wheel appliance dolly

### WOODSPLITTER & LAWN EQUIPMENT

Brave 22 ton woodsplitter



Bolens lawn tractor w/plow, disk, snow blade, harrow, and yard cart, unique hard to find with all these attachments  
DR Field and Brush walk-behind mower  
Herds ATV seeder  
15 Gal. ATV sprayer  
MTD Yard Machine 5 hp Rear tine tiller  
Mantis tiller  
Echo PAS-230 trimmer w/12" chainsaw bar attachment  
Husqvarna 55 chainsaw w/ case  
Stihl MS270C chainsaw w/case  
Craftsman hedger, gas  
Craftsman leaf blower  
Electric chainsaw sharpener  
2 Wheel lawn trailer  
3 pt 6' Landscape rake  
Lawnmower jack  
Wheelbarrow  
Bird feeder  
Lot of garden tools



### HOUSEHOLD AND ANTIQUES

Antique oak wall phone



Black bakelite candlestick phone  
2 Blue swivel recliners  
Wingback chair, rose color  
Bookcase  
Antique sled



Vintage metal spin toy, toy truck, Fisher Price piano  
Round and square wash tubs, White enamel dish pan, Green crock bowl, old Brownie camera, Granger tobacco cans, Antique kitchen scale, washboard, kraut cutter, some pink depression glassware, other antiques  
Lg Cast iron kettle with bale  
Child's rocker and handmade doll  
John Deere books, and other books  
Ping Pong table  
3 sets metal shelving  
2-4' & 2-6' White folding tables  
Nesco 18 qt roasting oven  
Pro Form treadmill  
Sharp XE-A103 cash register



### Consigned by neighbor:

2- 10 wheel Rakes, one with kicker

**Auctioneer's Note: We can't say enough about the Dodge truck; it has been maintained very well and is in excellent condition. A truck like this with low mileage is hard to find. The stock trailer, tractors and farm equipment have been stored under shed and also in excellent condition.**

**We will be running two rings, so bring a friend and be sure to be with us at this excellent auction!**

# CLARENCE & JUDY EHLERS

Terms: Cash, approved check or credit/debit card (Convenience Fee Applied.). Nothing to be removed until settled for. Not responsible for accidents. Statements made day of sale take precedence over printed material. **LUNCH SERVED.**

**Larry Drenon Auction**

**Larry** 660-596-8515  
**Lacey** 660-723-1104  
**Laramie** 660-221-4386

**660-547-2646**  
[www.DrenonAuction.com](http://www.DrenonAuction.com)