



236 E. 161st Place (Suite A)  
South Holland, IL 60473

Phone: (708) 596-4455  
Fax: (708) 339-6269  
[jgillandcompany.com](http://jgillandcompany.com)

**Client:** Loyola University (*Chicago, IL*)

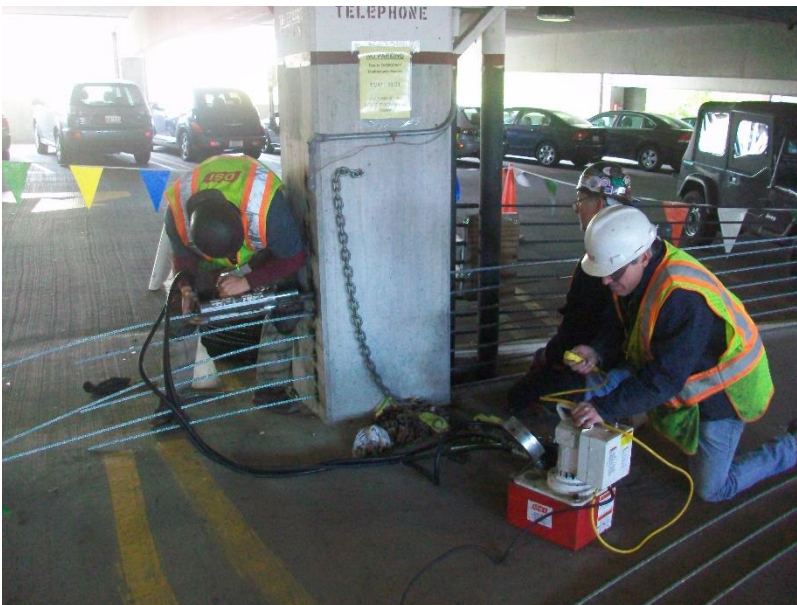
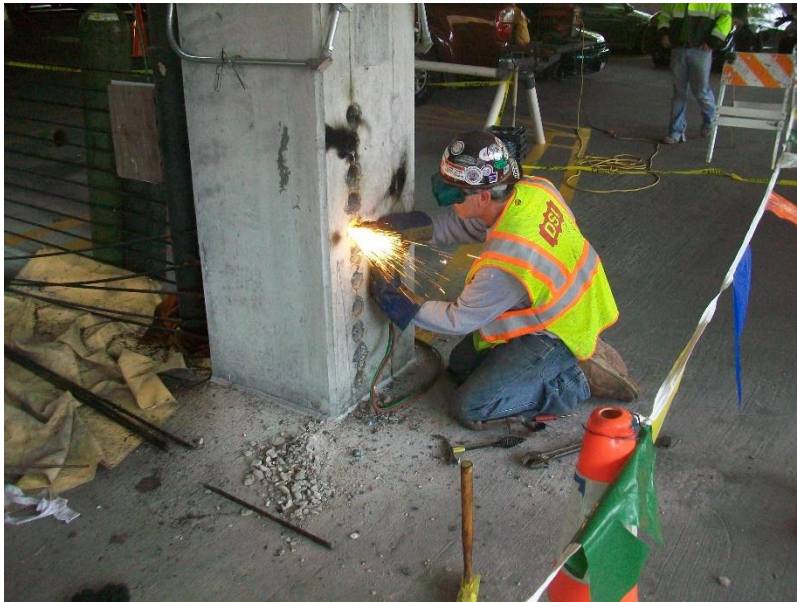
**Project Engineer:** Wiss, Janney, Elstner Associates, Inc.

**Project Superintendent:** Jeremy Gregorec

**Project Description:** In the spring of 2013, J. Gill & Company was hired by Loyola University to complete several miscellaneous maintenance repairs in their six floor parking garage. The repairs included replacing all of the existing barrier cables with galvanized barrier cables, removing and replacing eleven expansion joints, and removing and replacing traffic bearing membrane over the pour strips and above the first floor offices. J. Gill & Company completed the repairs in multiple phases with little impact on traffic flow and parking availability. J. Gill utilized personnel to direct traffic in and out of the entrance while the waterproofing repairs were being completed over the first floor offices adjacent to the exit. The project was completed in the fall of 2013 with a total cost of \$175,075.00.











236 E. 161st Place (Suite A)  
South Holland, IL 60473

Phone: (708) 596-4455  
Fax: (708) 339-6269  
[jgillandcompany.com](http://jgillandcompany.com)

