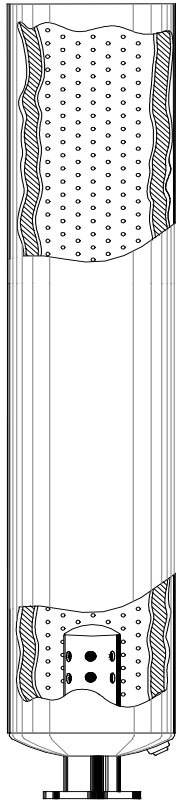


Model 553 Vent & Blowdown Silencer



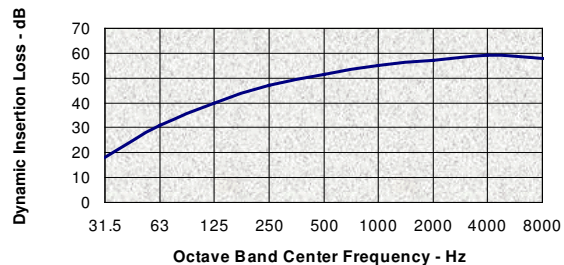
Standard Features:

- ✓ All Steel Welded Construction
- ✓ Quality Fabrication Techniques
- ✓ Condensate Drain
- ✓ Fiberglass Absorptive Pack
- ✓ Plate Flanges to Match ASA 125# Flanges
- ✓ Prime Coated Exterior Surfaces

Optional Features:

- ✓ Materials as Specified
- ✓ Finish as Specified
- ✓ Mounting Brackets
- ✓ Threaded Connections Available
- ✓ Companion Flanges
- ✓ Flange Drilling as Specified

Typical Performance

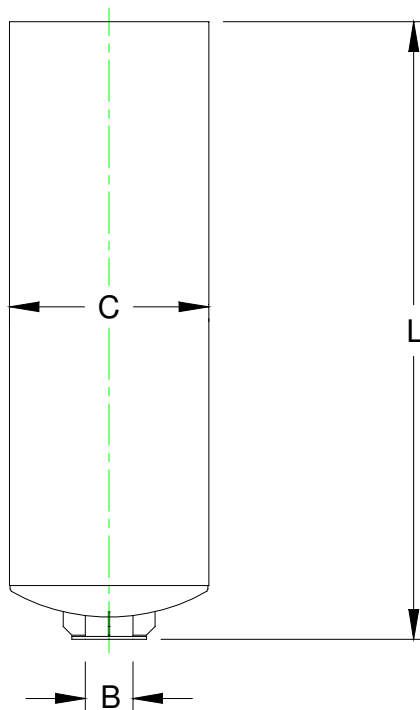


Application:

The **VANEC** Model 553 Vent and Blowdown Silencer is designed for use in suppressing the noise associated with venting high-pressure gas or steam to atmospheric pressure.

The Model 553 Vent & Blowdown Silencer, when properly applied, will reduce the gas discharge noise to a community acceptable level for dwellings located further than 400 ft. from the vent or blowdown. Silencer performance will depend upon actual operating conditions.

The **VANEC** Model 553 Vent and Blowdown Silencer is usually mounted vertically, but could also be mounted horizontally.



VANEC Model 553

Size	Dimensions in Inches			Est.Wt. Lbs.
	B	C	L	
553-06	3	12	96	300
553-08	4	14	108	400
553-10	5	16	114	530
553-12	6	18	140	680
553-14	6	20	192	1,150
553-16	8	22	204	1,300
553-18	8	24	208	1,525
553-20	10	26	225	1,800
553-22	10	28	238	2,050
553-24	12	30	260	2,400
553-26	12	32	273	3,000
553-28	14	34	274	3,500
553-30	14	36	304	4,000
553-36	18	42	370	5,800
553-42	20	48	432	7,700

VANEC Industrial Silencers
716-827-4959