



# **7.2KV DISCONNECT PART # D-15600**

**American Electric Equipment Inc.**  
150 Dixieland Drive  
Stanaford , WV 25927  
Phone: (304) 255-7438 | Fax: (304) 255-7448  
<http://www.americanelectricequipment.com>



# AMERICAN ELECTRIC EQUIPMENT, INC.

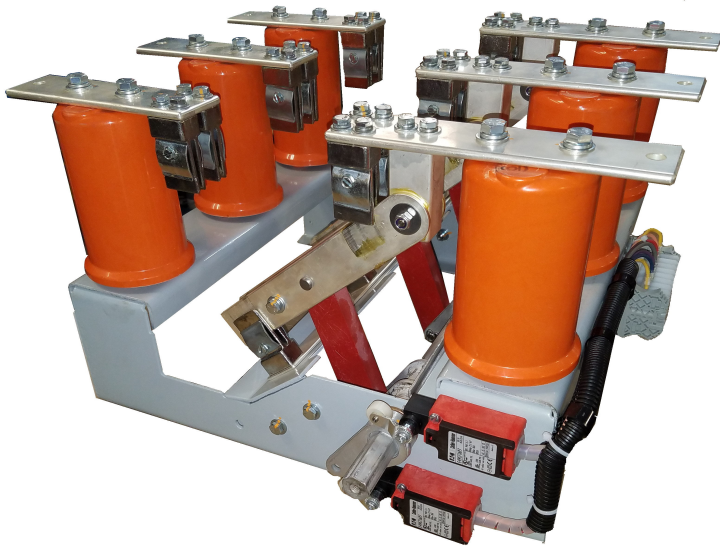
P.O. BOX 710 BECKLEY, WV 25801

PHONE: 304-255-7438

FAX: 304-255-7448

## 7.2KV GROUNDING DISCONNECT SWITCH

Document A-16070 AUGUST 6-2018

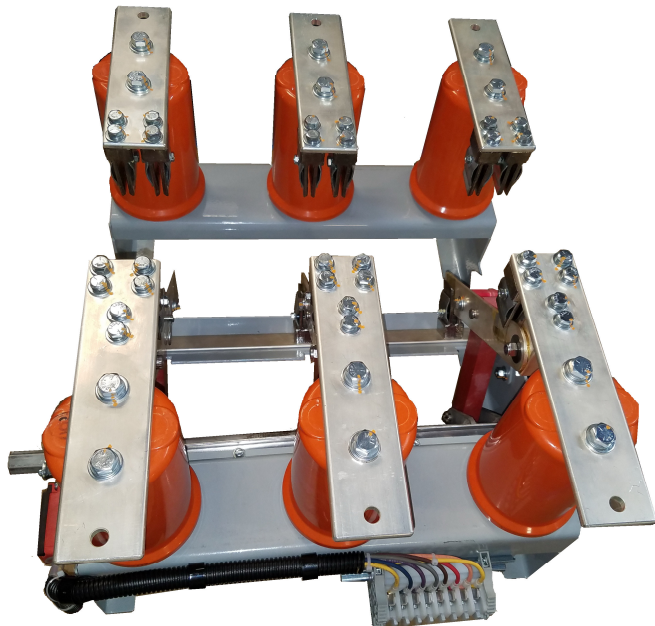
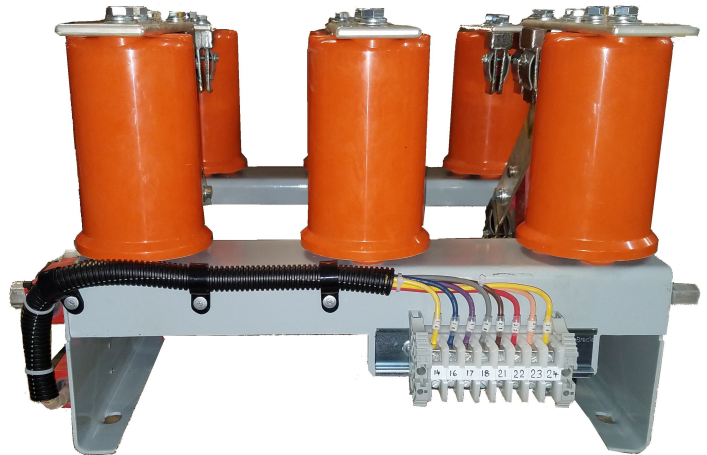


### Ratings

- Rated voltage 7.2kv
- Rated continuous current 800 amps

### Standard Features

- 1 - N.O. Early make auxiliary contact
- 1 - N.C. Early break auxiliary contact
- 1 - N.O. Open and grounded auxiliary contact
- 1 - N.C. Open and grounded auxiliary contact



### ORDERING INFORMATION

7.2kv 800 amp. Visible Disconnect Switch D-15600

See parts list for all other parts

AMERICAN ELECTRIC EQUIPMENT

P.O. BOX 710

BECKLEY, WV

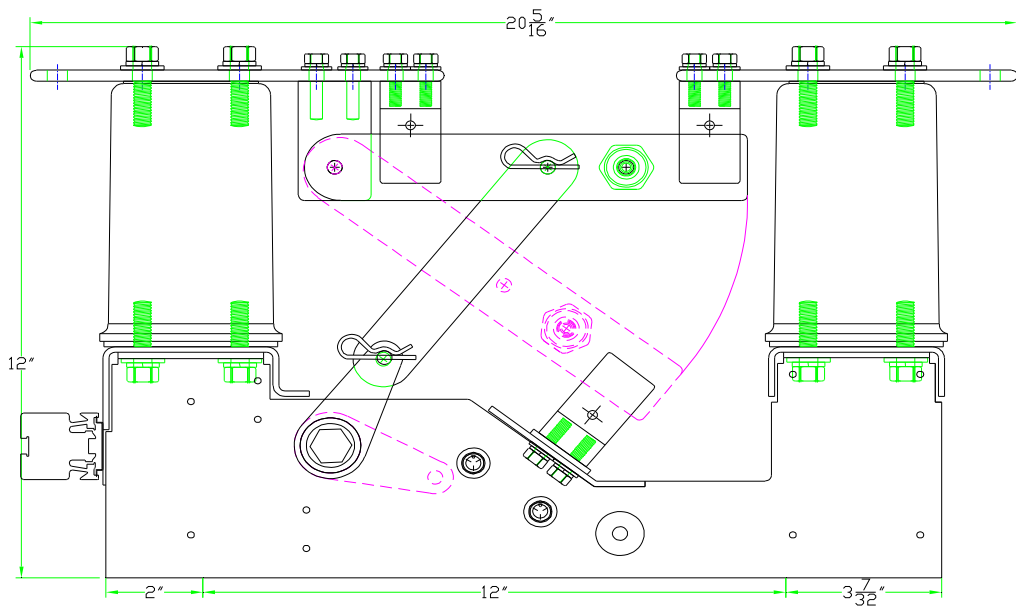
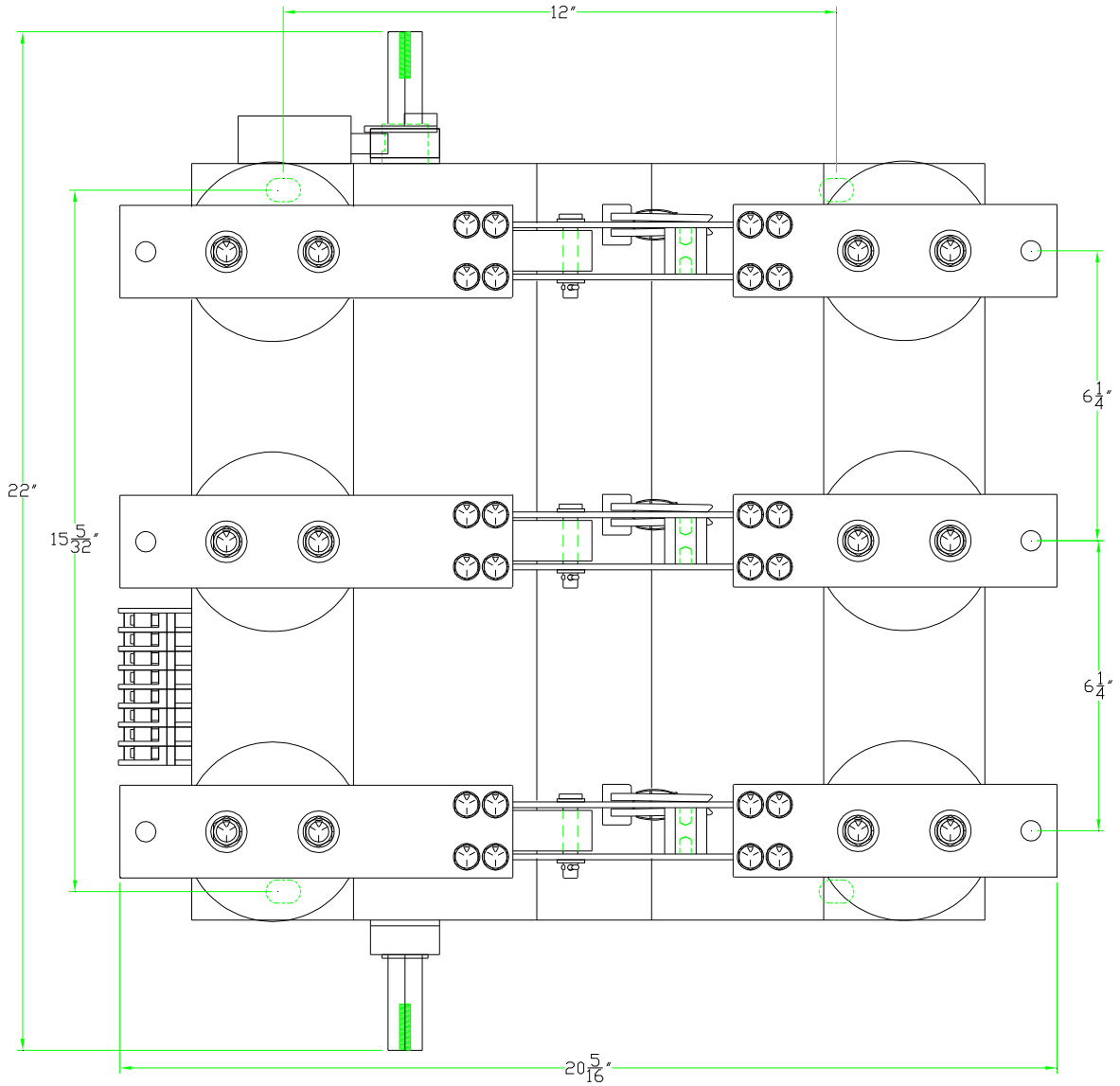
PHONE: 304-255-7438

FAX: 304-255-7448

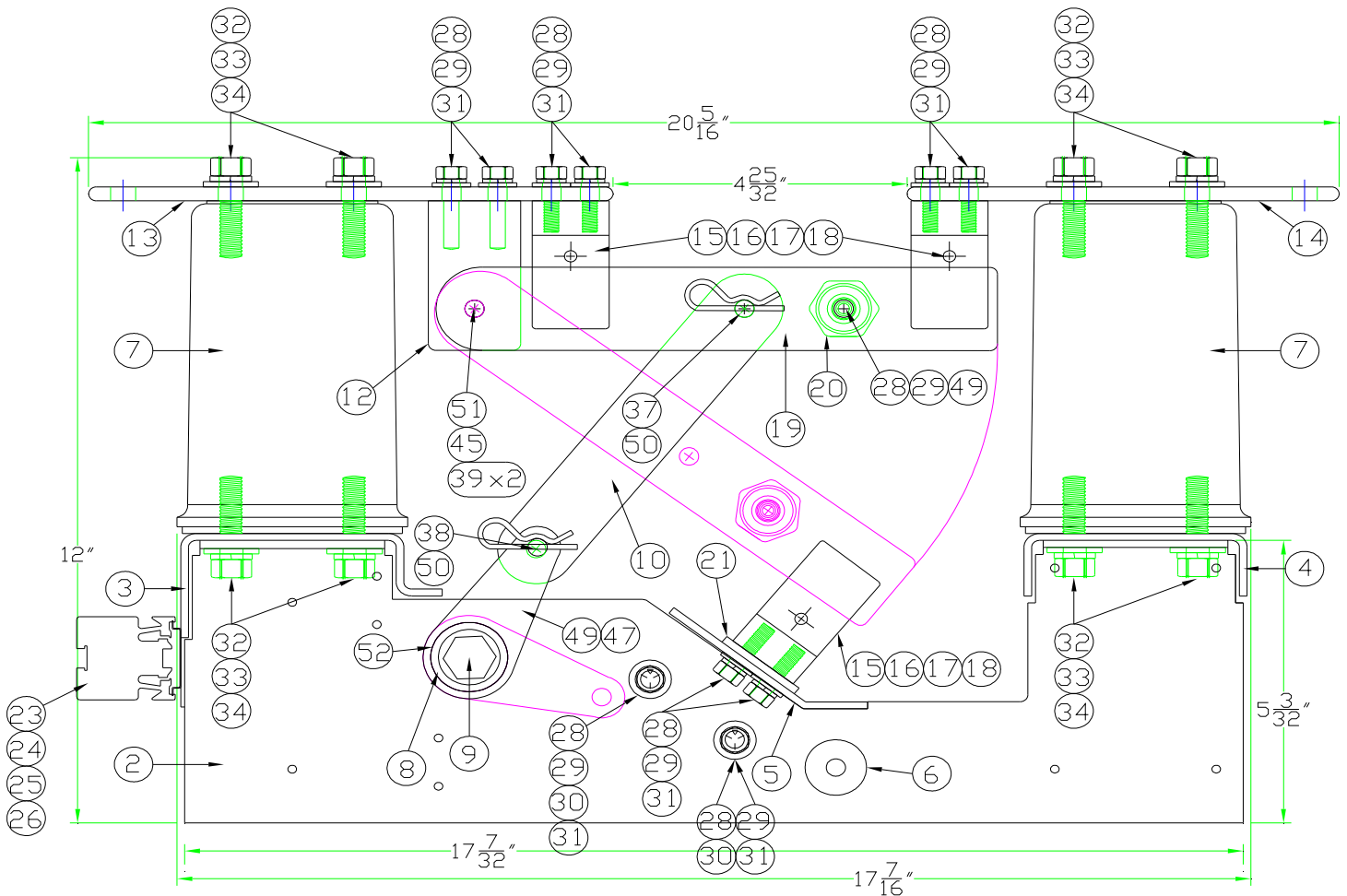
EMAIL:

[janie.fansler@americanelectricequipment.com](mailto:janie.fansler@americanelectricequipment.com)

# Overall Dimensions and Mounting



# Parts Identification Diagram



ITEM #	Quantity Needed	UOM	Part Number	Description
			D-15600	Complete AEEI VDS Assembly with Grounding
1	1	ea	A-15607-L	AEEI Visible Disconnect Switch Left Side Base
2	1	ea	A-15607-R	AEEI Visible Disconnect Switch Right Side Base
3	1	ea	A-15608	Bottom insulator mount
4	1	ea	A-15609	Top insulator mount
5	1	ea	A-15610	Center grounding blade mount
6	1	ea	A-14098	1" Weld On Ground Pad Threaded 1/4"-20 (Welded to A-13920L and R)
7	6	ea	A-9962-2	Insulator with 2 Hole 3/8" Top and 4 Hole 3/8" Bottom
8	2	ea	A-14013	Bronze Flanged Sleeve Bearing
<b>9</b>	<b>1</b>	<b>ea</b>	<b>A-15599</b>	<b>Hexagonal Pushrod Shaft Assembly</b>
	1	ea	A-15598	Hexagonal Shaft
	6	ea	A-13964	Pushrod to Main Shaft Pivot
10	3	ea	A-15597	Push Rod for Visible Disconnect Switch
11	1	ea	A-14406	1/4" x 1-1/2" Roll Pin
12	3	ea	A-15596	Copper Pivot Block for Visible Disconnect Switch
13	3	ea	A-15594	Load Side Copper Blade Support
14	3	ea	A-15593	Line Side Copper Blade Support

15	15	ea	A-14156	Plated Stationary Blade
16	30	ea	A-2076	Large Non-Threaded Clip
17	15	ea	A-2069-4	#10-32 x 1 Indented Hex Washer Head Slotted Machine Screw 18-8 S.S.
18	15	ea	A-10940	#10-32 Zinc Toplock Locknut
19	6	ea	A-15595	Phase Blade for Visible Disconnect Switch
20	3	ea	A-1284	1/4" X 1" Insulator
21	1	ea	A-15611	Ground Bus
	2	ea	A-13964	Pushrod to Main Shaft Pivot
<b>22</b>	<b>1</b>	<b>ea</b>	<b>A-14338</b>	<b>Switch Handle Assembly</b>
		ea	A-14338	Standard Switch Handle
	1	ea	A-14338-45	45° Switch Handle
		ea	A-14338-90	90° Switch Handle
	1	ea	A-14338-1	Hexagonal Switch Operator
	1	ea	A-14338-3	Handle Grip
23	8	ea	A-7105	Terminal Block
24	1	ea	A-7105-1	Terminal Block End Barrier
25	2	ea	A-7105-2	Terminal Block End Anchor
26	4.5	in	A-14234	Din Rail
27	2	ea	A-6081	Roller Lever Limit Switch
28	32	ea	A-2067-1	1/4" Flat Washer
29	28	ea	A-2071-1	1/4" Lock Washer
30	4	ea	A-14364	1/4" N.C. Nut
31	28	ea	A-2081-5	3/4" Long 1/4" N.C. Hex Head Cap Screw
32	24	ea	A-2067-3	3/8" Flat Washer
33	24	ea	A-2071-3	3/8" Lock Washer
34	24	ea	A-2084-2	1" Long 3/8" N.C. Hex Head Cap Screw
35	4	ea	A-14411	#8 x 1" Pan Head Screw
36	4	ea	A-14411-1	#8 Lock Washer
37	3	ea	A-14333-1	5/16" X 1-3/4" SS Clevis Pin
38	3	ea	A-14333-2	5/16" X 1-1/2" SS Clevis Pin
39	6	ea	A-14351	5/16" Bellville Washer
40	6	ea	A-14369	0.093" X 1-5/8" OAL Zinc Plated Hairpin Cotter (1/4" to 1/2" Shaft Size)
41	2	ft	A-14372	3/4" Split Loom Tube
42	4	ea	A-14374	Nylon Loop Clamp
43	3	ea	A-14398	5/16" x 1-1/4" Stainless Steel Shoulder Bolt
44	1	ea	A-14398-1	5/16" x 3/8" Stainless Steel Shoulder Bolt
45	3	ea	A-14407	1/4" Lock Nut
46	1	ea	A-14312	1" Collar
47	2	ea	A-14726	5/16" X 1/2" Allen Head Set Screw w / Knurel-Grip Cup
48	1	ea	A-14402	Isovac Switch Grease
49	6	ea	A-2081-3	1/2" Long 1/4" N.C Hex Head Cap Screw
50	6	ea	A-14369	0.093" X 1-5/8" OAL Zinc Plated Hairpin Cotter (1/4" to 1/2" Shaft Size)
51	6	ea	A-14351	5/16" Bellville Washer
<b>52</b>	<b>1</b>	<b>ea</b>	<b>A-14318</b>	<b>Trip Adapter Assembly</b>
	1	ea	A-14141	Trip operator / Roller Holder for VCB
	1	ea	A-14099	Tripping Adapter