

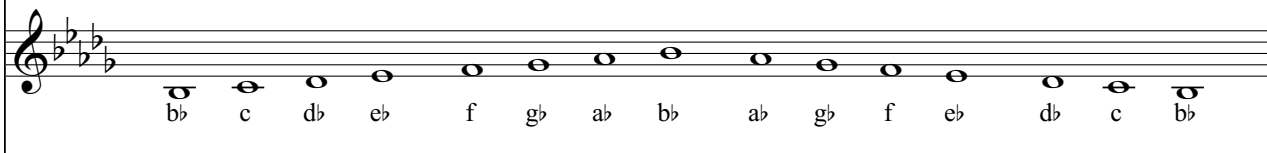
b \flat minor

relative major: D \flat +

key signature: b \flat e \flat a \flat d \flat g \flat

b \flat minor natural

The natural minor simply borrows the key signature of it's relative, D \flat major.

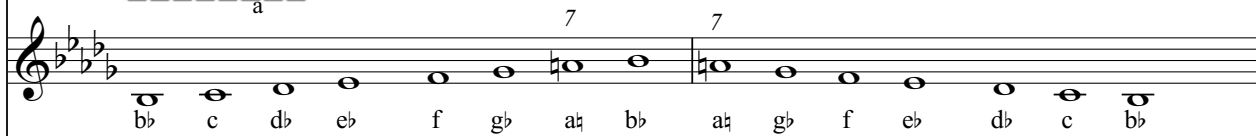
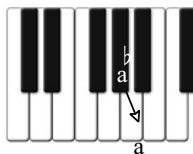


b \flat minor harmonic

The 7th note is raised a half step ascending and descending the scale.

The 7th note is a \flat (see the key signature)

and it is raised to a \sharp creating the *leading note*.



b \flat minor melodic

The 6th and 7th notes are raised a half step ascending the scale

and lowered a half step descending the scale.

Ascending the scale the 6th note is g \flat

(see the key signature) and is raised to g \sharp .

