

# Shadow Ridge South HOA

972-874-9541 • P.O. Box 271061 • Flower Mound, Texas • 75027-1061 • [www.srshoa.org](http://www.srshoa.org)

June 3, 2019, 2019: Volume 18 Issue 3

## **REAL ESTATE SALES JANUARY – MAY 2019**

### **SHADOW RIDGE SOUTH**

Based on 7 Homes Sold  
Sales Price: \$354,414  
Price Per Sq. Ft.: \$150.32  
Days on Market: 43

### **SIMILAR HOMES IN ALL OF FLOWER MOUND**

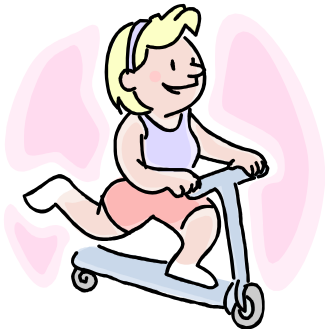
Ave. Sales Price: \$393,788  
Ave. Price Per Sq. Ft.: \$146.31  
Ave. Days on Market: 33

---

COMPLIMENTS OF GALA LANGLEY  
ERA CORNERSTONE REALTY

## **Watch out for kids on the street**

With school letting out for the summer there will be more children out and about on the streets. Drivers should stay alert and be on the lookout for kids that could run into the street. Children are not always aware of their surroundings and do not always look before running onto the street.



## **SMART WAYS TO WATER YOUR LAWN**

Our neighborhood lawns are now made up of Bermuda, St. Augustine, and Zoysia grass. For Bermuda and Zoysia grass it is recommended to water it a total of one inch per week. If you have St. Augustine grass it is recommended to water it a total of two inches per week. Irrigate in shorter bursts to give water a chance to soak in, and allow 30 minutes or more between cycles. An easy way to measure how much water is going on your grass is to place a 6-ounce tuna can on your lawn while your sprinklers are running. When the can is full, you've applied one inch of water. If you start to notice runoff before the can is full, turn off the water. Then, hold off about an hour to let the grass soak up the water, resume watering the grass and stop when the tuna can fills up. Water early in the morning, before 10 a.m. Watering from midmorning to late afternoon can cause one-third of your water to evaporate. Also, avoid watering in the evening, as lawns left wet overnight are more susceptible to diseases. Monitor your lawn for signs of stress, such as wilting and discoloration. When you first spot wilting, you've got 24 to 48 hours to act before your lawn is seriously damaged. Make sure your system is working properly. The key to watering lawns is to apply water infrequently, yet thoroughly. This creates a deep, well-rooted lawn that efficiently uses the water that is stored in the soil.



### **2019 Board Members**

**President:** Paul Zellar **Treasurer:** Perry Adams

**Vice President:** Kenneth Powell **Secretary:** Gala Langley **At Large:** Aaron Hoff

# Neighborhood at a Glance

## EASTER EGG HUNT

The Easter Egg Hunt was held on Sunday April 14 at Shadow Ridge Park. Many thanks for Pat Zellar being the Easter Bunny and contributing the prizes and goody bags for the kids. The HOA provided 2,000 colored Easter eggs for the event. A good time was had by all.



## DON'T HIDE YOUR BEAUTIFUL HOME

There are many homes in our neighborhood that are hidden by overgrown shrubs in many cases covering front windows and attractive brick features. These shrubs were originally small and proportionate to the front of homes but now have grown out of control in many cases. These overgrown shrubs not only detract from the curb appeal of our homes, but they may serve as cover for burglars. Law enforcement agencies recommend that shrubs be trimmed back below the height of window ledges. We are also seeing many homes with shrubs that have died and should be removed.

Many homeowners are replacing these large shrubs with smaller, more proportionate plants that enhance the look of their homes. Other homeowners have put in a mixture of flowering plants, ornamental grasses, and smaller shrubs. These improvements add to the curb appeal of our homes and bring out the beauty of the brick arches and columns that make them attractive. When it comes to shrubs, less can be more. Don't let them take over and hide your beautiful home.

## May Yard of the Month 1833 Flatwood



## June yard of the Month 1817 Honey Mesquite



### 2019 Board Members

**President:** Paul Zellar **Treasurer:** Perry Adams

**Vice President:** Kenneth Powell **Secretary:** Gala Langley **At Large:** Aaron Hoff