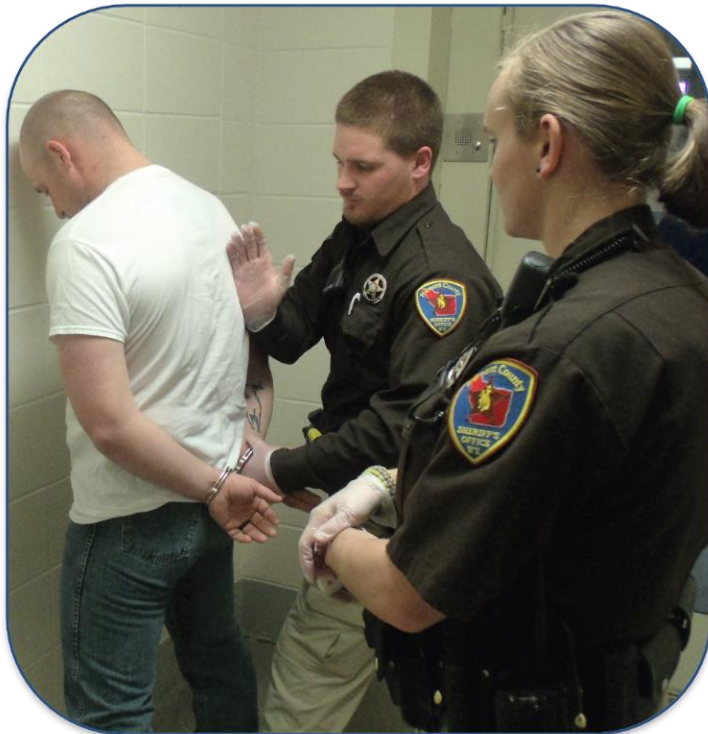


2015

ALCOHOL and CRIME in
WYOMING



**Wyoming Association of Sheriffs
and Chiefs of Police**

WYOMING DEPARTMENT OF TRANSPORTATION – Highway Safety Program

ALCOHOL AND CRIME IN WYOMING: 2015

April 2016

The analysis of the data collected by the Wyoming Association of Sheriffs and Chiefs of Police and the printing of this report was made possible through the assistance of Federal 402 Highway Safety funds received from the Wyoming Department of Transportation – Highway Safety Program. The Project was managed by Johnson and Associates of Douglas, Wyoming. The report was authored by Ernest L. Johnson, Director of Services.

TABLE OF CONTENTS

1. INTRODUCTION 2

2. EXECUTIVE SUMMARY..... 3 – 5

3. EMERGING TRENDS 6 - 8

4. PUBLIC CONCERNS 9

5. SIGNIFICANT STATISTICS AND FINDINGS 9 - 11

6. JUVENILE/UNDERAGE DATA12

7. PROJECT DESIGN and IMPLEMENTATION..... 13

8. DATA/STATISTICS 14 - 45

 Table – Total Number of Reports to Number of Arrests

 Table – Number of Arrests and Percentages

 Table – Statewide arrests – Demographics

 Tables – Alcohol and Drug Involvement by Offense

 Table – Meth, Drugs and Public Intoxication

 Pie Chart – Methamphetamine, Alcohol and Other Drugs

 Bar Graph – Alcohol Arrests Percentages

 Bar Graph – Public Intoxication arrests by County

 Bar Graph – DUI arrests by County

 Table – Location of Alcohol Consumption/Sale

 Tables – DUI Arrests; Traffic Crashes

 Bar and Pie Graphs – DUI statistics

 Tables and Bar Graphs – Juvenile Statistics

 Table – Reporting Percentages

 Table – Natrona County Statistics (Sample County Statistics)

9. ACKNOWLEDGEMENTS 46

10. ATTACHMENTS47 - 51

 A - Sample Reporting Form

 B - BAC Educational Guide – Males

 C – BAC Educational Guide - Females

 D - Project Manager Vita

INTRODUCTION



The Wyoming Association of Sheriffs and Chiefs of Police has been collecting substance-related data from all persons booked into county detention facilities in Wyoming since 2005. The data-collection process has been refined since that initial effort and has now been institutionalized as a part of the book-in process year-round for all custodial arrests in all twenty-three counties in Wyoming.

Although it had long been suspected that alcohol was a factor in a large number of custodial arrests in Wyoming, reliable data had not been available previously to more accurately determine the scope and impact of alcohol on crime in this state. A sufficient amount of substance-related arrest data has been collected during the past eleven years which can now be analyzed for the purpose of identifying trends relative to alcohol, as well as other drug abuse involvement in crime in Wyoming. Consistent patterns of alcohol and other drug involvement for certain crimes are now more evident and the frequency of occurrence more predictable.

This report contains an analysis of substance-related arrest information collected in all twenty-three counties in Wyoming during a twelve-month time period (January 1 through December 31, 2015) by the Wyoming Association of Sheriffs and Chiefs of Police. Information was collected from a total of 15,996 persons who were arrested and subsequently detained in a county detention facility. The substance-related arrest data contained in this report provides a statistical picture of the impact that substance abuse is having on crime in Wyoming.

To date, information has been collected from a total of 170,221 persons who were arrested and subsequently detained in a detention facility in Wyoming. Specific information collected during the book-in process includes the following:

- Type of offense
- Whether alcohol or other drugs were involved
- Location of last consumption and point of sale
- Known blood alcohol content levels for alcohol related arrests; and
- Demographic information

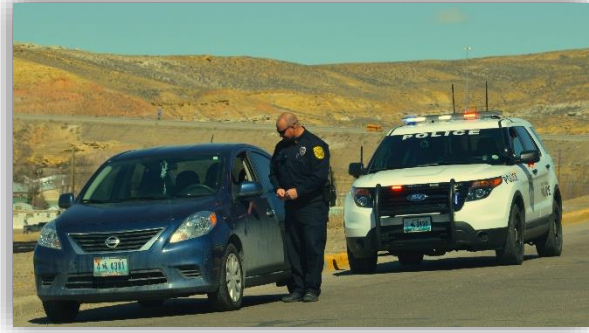


The Wyoming Association of Sheriffs and Chiefs of Police publish the results and analysis of the data-collection efforts each year in three separate reports.

The main report provides statewide statistics and averages, along with comparisons of county statistics in specific categories. An accompanying supplemental report provides county, community and local law enforcement agency specific statistics. The third report is an Executive Summary which provides selected statistics, information and highlights from the main report. These reports can be accessed online on the following websites: <http://wascop.com> and <http://jandaconsulting.com>

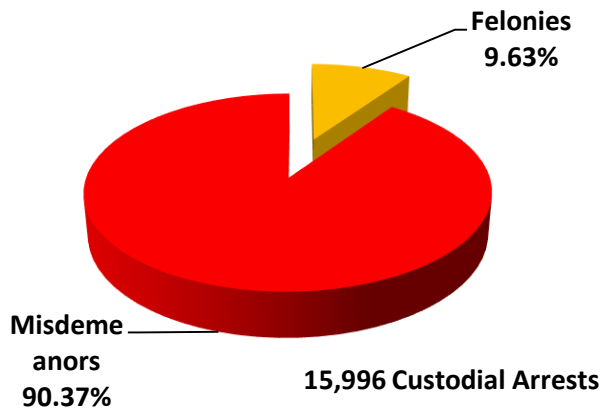
EXECUTIVE SUMMARY

This Executive Summary highlights a few of the significant findings contained in this report. It focuses on issues that are of obvious concern or which may be of greater interest to the general public; however, a careful review of other relevant findings and statistics contained in the main body of this report is essential in order to gain a more complete perspective of the impact of alcohol on crime in Wyoming.



The profile of the average person taken to jail in Wyoming continues to be relatively consistent with previous years. About eight out of ten times it was a male (although females have increased incrementally in recent years, 22% this year), average age 36. 12.5% of the time it was an out-of-state visitor and 6.4% of the time it was an in-state visitor. Juvenile arrests resulting in detention in a detention facility accounted for less than 1% of the total custodial arrests (88 out of 15,996).

Crime in Wyoming

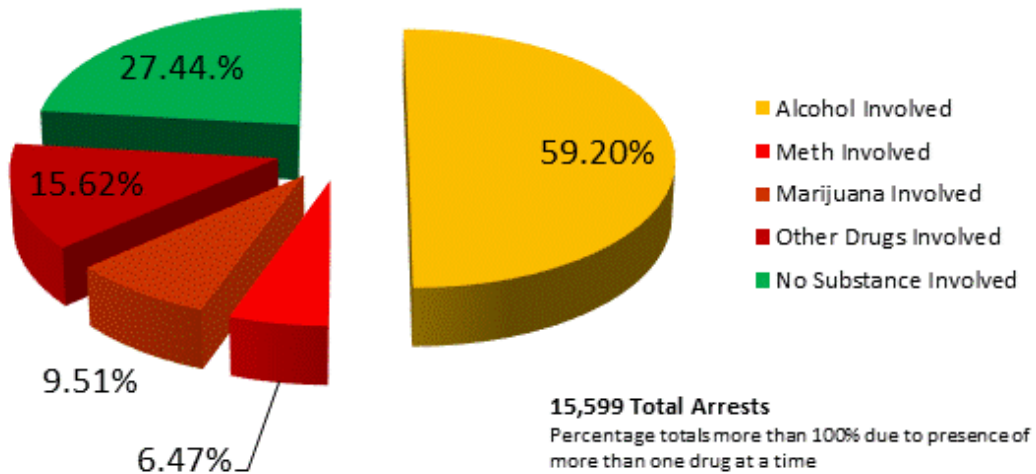


A review of the data collected from persons arrested and subsequently taken to jail indicates that Wyoming continues to be relatively safe from what is generally considered to be “serious” crime. The number of persons who are arrested for felonies are relatively low when compared to the number of persons arrested for minor crimes (misdemeanors). *Felony arrests accounted for 9.63% of the total arrests statewide.*



Although Wyoming is relatively “safe” from what is generally considered to be serious crime (felonies), the high percentage of alcohol-involved arrests, the inordinate number of arrests for public intoxication and driving under the influence, and the high levels of blood alcohol content for drivers arrested for being impaired represent real and significant threats to public safety.

Meth, Alcohol and Other Drugs Involved Arrests



Alcohol and Crime in Wyoming - 2015

The information collected from a total of 15,996 persons who were arrested and subsequently detained in a county detention facility in Wyoming during 2015 confirms what law enforcement officers who patrol the streets and highways and who respond to calls for service in Wyoming already know from experience – alcohol is the contributing factor most often present in situations that result in someone going to jail.

SUMMARY OF SUBSTANCE-INVOLVED ARREST STATISTICS FOR 2015:

- Alcohol was involved in 59.2% of all custodial arrests.
- Methamphetamine was involved in 6.47% of the 15,996 reported arrests.
- Marijuana was involved in 9.51% of all custodial arrests.
- Other drugs were involved in 15.62% of the reported arrests.
- Arrests for public intoxication accounted for 16.23% of all arrests.
- The average blood alcohol content for persons arrested for public intoxication was 0.2391.
- Driving under the influence arrests accounted for 26.27% of all arrests.
- The average reported blood alcohol content for DUI arrests statewide was 0.1574.¹

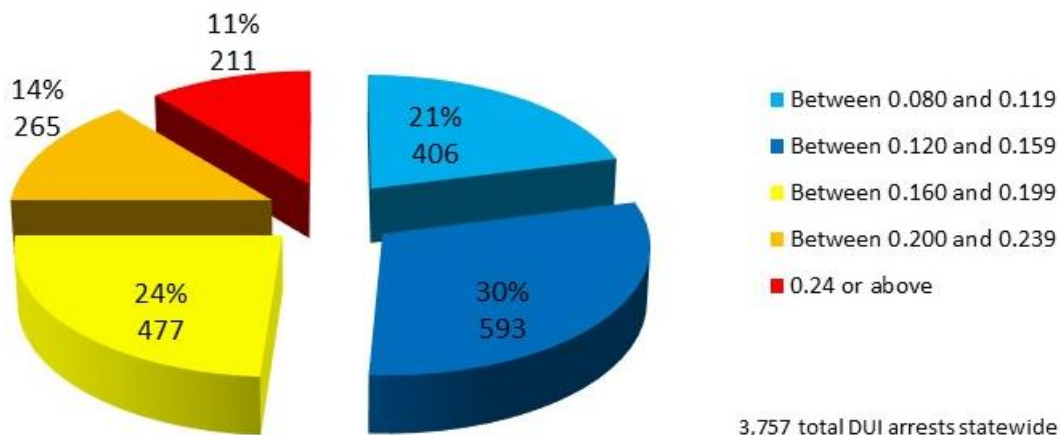
¹ In Wyoming, a person driving with a blood alcohol content of 0.08 is legally presumed to be impaired.

Alcohol and Crime in Wyoming - 2015

- 49% of persons arrested for DUI had a reported BAC level above 0.16 and 11% had a BAC of 0.24 or greater.
- The average reported BAC for 536 persons who were arrested for DUI after being involved in a traffic crash was 0.1676.
- The age group with the highest percentage of DUI arrests was age 21-25 (17%), followed by age 26-30 (15%) and 31-35 (12%).

DUI Arrests with Reported BAC in Each Range

(Statewide Average BAC – 0.1574)



3,757 total DUI arrests statewide

Number of arrests in BAC ranges does not total 3,757; some DUI arrests did not have reported BAC

Alcohol and Crime in Wyoming - 2015

In order to grasp the significance of the blood alcohol content statistics, it should be noted that a physically fit male who weighs 180 pounds would have to consume at least seven drinks in one hour in order to achieve a BAC of 0.15 – a female weighing 120 pounds would have to consume five drinks in one hour.

Please refer to the Alcohol Impairment Educational Guides for males and females in the Attachments Section of this report for information about the level of impairment for other body weights and drinks consumed.



EMERGING TRENDS

EMERGING TRENDS IN THE TYPE OF SUBSTANCE INVOLVED IN CRIME:

Alcohol and/or other drugs were involved in 75% of the 15,996 custodial arrests in 2015.

Although alcohol-involved arrests continue to be the drug most often present in situations that result in someone going to jail, divergent trends in the types of substance involvement in crime in Wyoming have emerged recently.

During the last six years in which data is available for a calendar year period (2010-2015), the number and percentage of *alcohol-involved arrests have decreased* - while the number and percentage of *other drug-involved arrests have increased*.



The number of alcohol-involved arrests have decreased each year since 2010. Alcohol-involved arrests in 2015 were 4,129 fewer in number (a 30% decrease) than in 2010.

The number of other drug-involved arrests has increased each year since 2010 (with the exception of one year). Drug-involved arrests were 706 more in number (a 39% increase) than in 2010.

The number of meth-involved arrests has increased each year since 2010 and has more than doubled during the last three years. There were 1,035 meth-involved arrests in 2015.



The Association began collecting marijuana-involved arrest data in March of 2014 in an effort to assess the impact on public safety in Wyoming from Colorado's legalization of marijuana. Data collected thus far indicates an increase in the number and percentage of marijuana-involved arrests in 2015 – 7.6% for the ten months in 2014 and 9.5% for 2015.

TRENDS IN ARRESTS FOR IMPAIRED DRIVING:

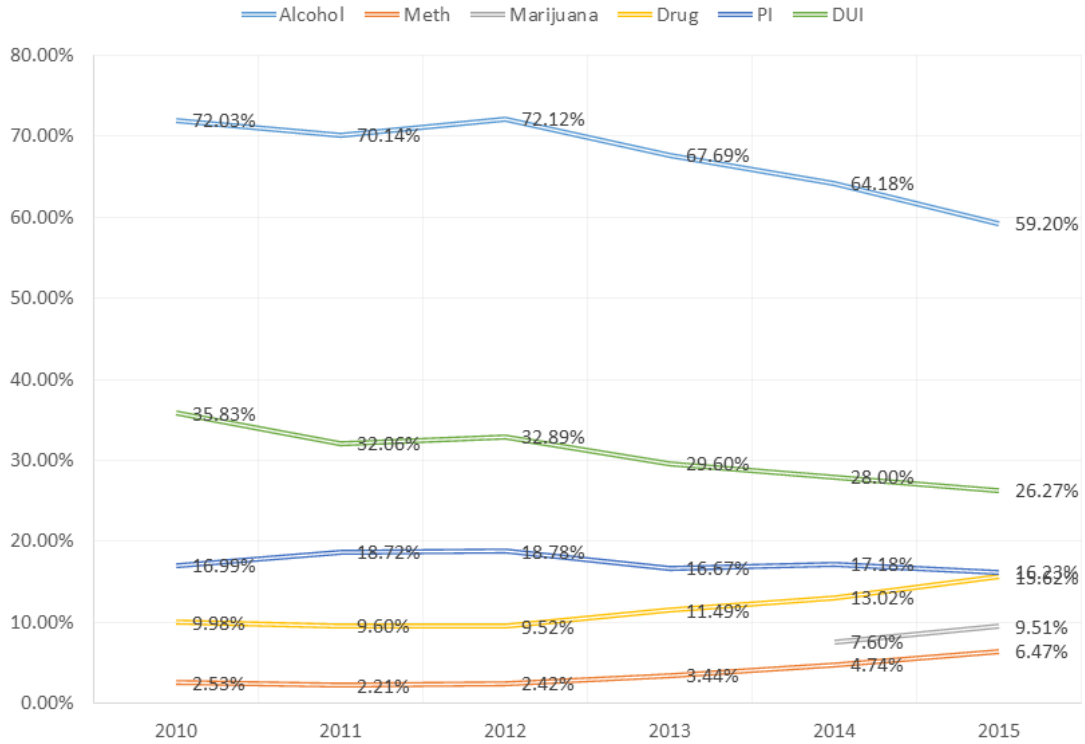
The statistics for persons arrested for driving while impaired mirrors the recent trends for all substance-involved arrests. The percentage and number of persons arrested for driving

impaired has decreased during each of the last five years while the percentage for other drug-involvement for impaired driving arrests has increased.

And, the average blood alcohol content for persons arrested for impaired driving during the last six years remains at double the presumptive level for impairment – while the average blood alcohol content for persons arrested for public intoxication remains at almost three times the presumptive level.

Alcohol and Crime in Wyoming - 2015

SUBSTANCE-INVOLVED ARRESTS – PERCENTAGE OF TOTAL ARRESTS



Substance-Involved Arrests: Number of Total Arrests

Alcohol Involved	Meth Involved	Drug Involved	Public Intoxication	DUI
2010 13,599	2010 472	2010 1,792	2010 4,297	2010 5,946
2011 13,329	2011 420	2011 1,825	2011 4,473	2011 5,199
2012 13,213	2012 444	2012 1,745	2012 4,601	2012 4,761
2013 12,638	2013 643	2013 2,146	2013 4,241	2013 4,353
2014 11,143	2014 823	2014 2,261	2014 3,501	2014 4,216
2015 9,470	2015 1,035	2015 2,498	2015 2,965	2015 3,757

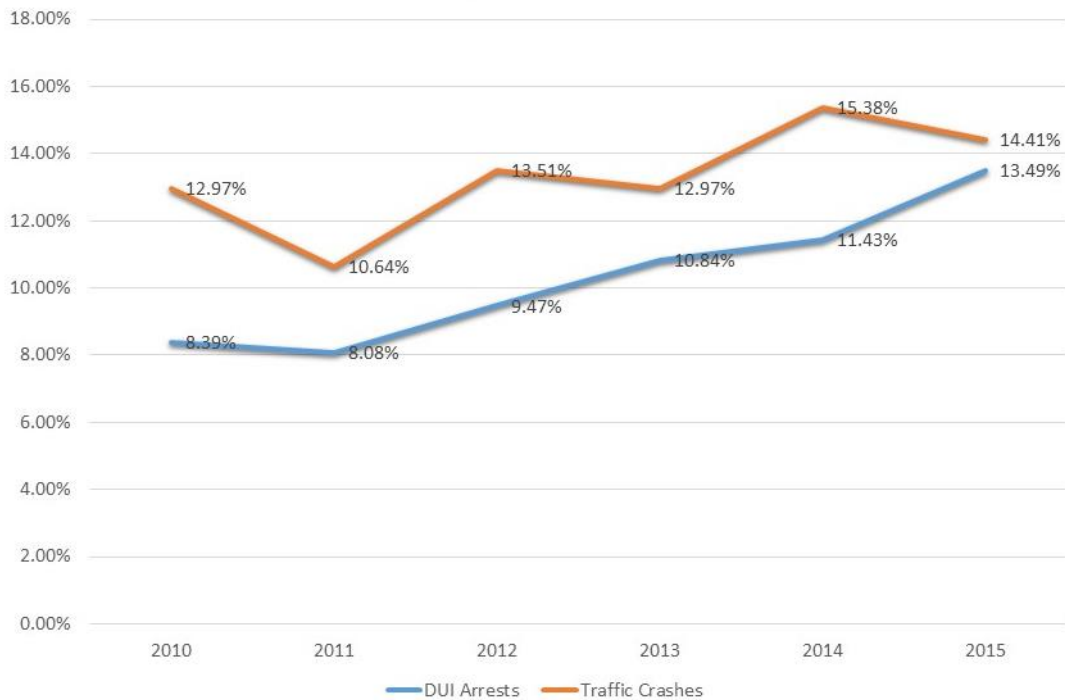
Alcohol and Crime in Wyoming: 2010-2015

Driving Under the Influence Arrests: 2011 - 2015

Number of Arrests	% of Total Arrests	Average BAC	Drugs Involved	Traffic Crashes
2011 5,199	2011 32.06%	2011 .1545	2011 8.81%	2011 609
2012 4,761	2012 32.89%	2012 .156	2012 9.47%	2012 627
2013 4,353	2013 29.60%	2013 .1556	2013 10.84%	2013 671
2014 4,216	2014 28%	2014 .1556	2014 11.43%	2014 536
2015 3,757	2015 26.27%	2015 .1574	2015 13.49%	2015 472

Alcohol and Crime in Wyoming: 2011-2015

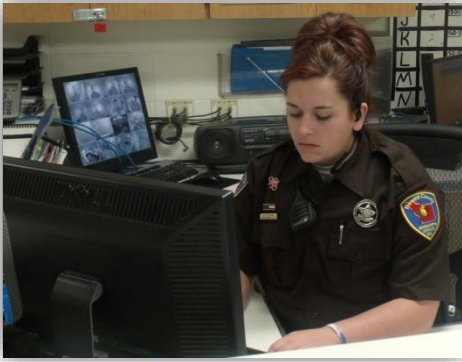
Drug Involvement



PUBLIC CONCERNS

The statistics contained in this report identify significant public safety issues which merit further discussion, analysis and action by local law enforcement, citizens and state/community leaders

The high percentage of alcohol involved arrests (59.2%), the inordinate number of arrests for public intoxication (2,965) and DUI (3,457) and the high levels of BAC recorded for these individuals (average BAC: 0.2391 for public intoxication and 0.1574 for DUI) appear to validate the concerns about alcohol abuse expressed by Wyoming residents in the most recent statewide public opinion survey².



Some excerpts from the survey that involved 4,798 Wyoming residents:

- 79.7% view alcohol abuse by Wyoming adults as a serious or somewhat serious problem
- When Wyoming residents were asked whether they would support a state law that would prohibit selling or serving alcohol to someone who is obviously intoxicated:
 - 64.3% strongly supported such a law
 - 17.9% somewhat supported such a law
- 84.5% of Wyoming residents believe that drinking and driving in their community is a serious or somewhat serious problem.

SIGNIFICANT STATISTICS AND FINDINGS

This report provides statewide statistics and averages, along with comparisons of county statistics in specific categories. In addition, there are approximately one hundred pages of data in a supplemental report that provides county, community and local law enforcement agency specific statistics.

Detailed charts and graphs included in the Data/Statistics section of this report are helpful in identifying trends involving alcohol-related arrest activity and provide a statistical picture of the circumstances which result in someone being arrested and subsequently taken to jail in Wyoming. The impact of substance abuse on crime statistics varies by county across the state. This report also includes a detailed analysis by county for comparison purposes.



² Wyoming Alcohol Use Issues Survey, Wyoming Survey & Analysis Center, November 2012

Alcohol and Crime in Wyoming - 2015

Listed below are a few of the noteworthy statewide averages and county specific alcohol-related statistics and findings from the Data/Statistics section of this report.

- **Alcohol was a factor in 59.2% of the custodial arrests in Wyoming.**
 - Counties with significantly higher statistics:
 - Teton – 87.07%
 - Fremont – 70.21%
 - Fremont – 68.12%

- **Methamphetamine was involved in 6.47% of the arrests statewide.**
 - Counties with significantly higher statistics:
 - Converse – 12.76%
 - Hot Springs – 11.36%
 - Campbell – 11.20%

- **“Other” drugs were involved in 15.62% of the reported arrests statewide.**
 - Counties with significantly higher statistics:
 - Platte – 44.88%
 - Carbon – 26.60%
 - Sublette – 25.49%

- **Marijuana was involved in 9.51% of the arrests statewide.**
 - Counties with significantly higher statistics:
 - Platte – 38.98%
 - Weston – 22.22%
 - Carbon – 16.67%

- **Arrests for Public Intoxication accounted for 16.23% of all arrests statewide. (The statewide average does not include 644 persons who were admitted into the VOA Detox Center for public intoxication)**
 - Counties with significantly higher statistics:
 - Laramie – 28.75%
 - Fremont – 28.16%
 - Teton – 24.83%

- **The average blood alcohol content for all persons arrested for public intoxication was 0.2391.**
 - Counties with significantly higher statistics:
 - Weston – 0.3025
 - Carbon – 0.2737
 - Fremont – .2672



Alcohol and Crime in Wyoming - 2015

- **Driving under the influence (DUI) arrests accounted for 26.27% of all arrests statewide.**
 - Counties with significantly higher statistics:
 - Teton – 49.66%
 - Lincoln – 45.30%
 - Campbell – 43.75%

- **13.49% of the arrests for DUI involved drugs.**
 - Counties with significantly higher statistics:
 - Platte – 25.64%
 - Washakie – 24.24%
 - Carbon – 24.10%

- **The average blood alcohol content (BAC) reported for 3,757 persons arrested for driving under the influence statewide was 0.1574.**
 - Counties with significantly higher statistics:
 - Lincoln - 0.1779
 - Johnson - 0.1773
 - Park - 0.1757

- **14.41% of traffic crashes resulting in arrests involved drugs.**
 - Counties with significantly higher statistics:
 - Carbon – 35.0%
 - Sublette – 33.33%
 - Converse – 31.25%

- **The average BAC reported for 472 traffic crashes that involved alcohol was 0.1676.**

- **49% of the persons arrested for driving under the influence had average blood alcohol content above 0.16.**

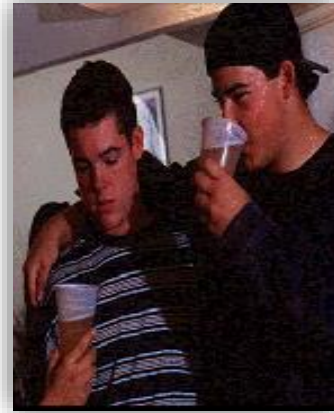


JUVENILE/ UNDERAGE DATA

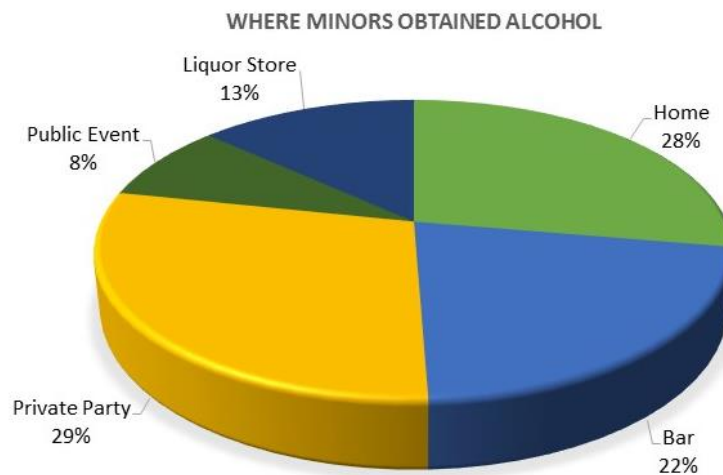
The data in this report does not represent a complete accounting of juvenile arrests as these arrests often do not result in detention in a county facility.

A total of 294 underage youth were taken into custody and placed in a detention center this year for being a minor in possession of alcohol. The average BAC was .1274.

A total of 190 underage youth were arrested for driving under the influence – 58 of these arrests involved drugs. The average BAC was .1238. Thirteen of the underage youth arrested were under the age of 18.



- **5.50% of all persons arrested for driving under the influence (DUI) were under the age of 21.**
- **Juveniles accounted for less than 1% of the arrests statewide (88 total).**
- **25% of the juvenile arrests involved alcohol (22 total).**
- **2.27% of the juvenile arrests involved methamphetamine.**
- **21.59% of the juvenile arrests involved marijuana (19 total).**
- **27.27% of the juvenile arrests involved “other” drugs (24 total).**
- **166 minors arrested for alcohol-related offenses reported obtaining alcohol at:**



PROJECT DESIGN AND IMPLEMENTATION

The Wyoming Association of Sheriffs and Chiefs of Police contracted with Johnson and Associates, a Wyoming based management consulting firm, to manage and staff this project – to create the master database, to collect and input data, to author the final report and to make presentations to select groups. The Association has contracted with Johnson and Associates to manage and staff this project since its inception.

A task force comprised of administrators and detention facility personnel from each of the county law enforcement agencies involved in the initial data collection efforts in 2005 determined the scope and intent of the project and provided specific direction for its implementation. In the following years, all law enforcement and detention facility administrators in the state were involved in deciding the appropriate fields for collection of data, selecting the subject areas that would be targeted for analysis and refining the process and procedures for collecting the information.

A supply of reporting forms and self-addressed stamped envelopes were provided to all detention facilities in the state - along with an instruction sheet for processing the completed reporting forms. In addition, all detention facility personnel who were assigned the responsibility to oversee their agencies' data collection were provided individual orientations. All completed reporting forms were submitted to Johnson and Associates for data entry on a weekly basis.

The master database for this project was created in a manner that will allow “harvesting” of additional information in the future should a need or particular area of interest arise. The data in this report is presented by “county” and by “department,” by actual numbers and percentages, and by various categories of interest. The information was assembled in this manner in order to assist law enforcement administrators, as well as community leaders, to better analyze the information and to facilitate follow-up inquiries of notable concerns.

DATA COLLECTION

A one-page reporting form consisting of fill-in or checked boxes was constructed and refined during the course of this project. It is estimated that the form requires the booking and/or arresting officer two-to-three minutes to fill out during the book-in process. Specific information that was collected during the book-in process include: type of offense, whether alcohol was involved; whether drugs were involved; location of last consumption and point of sale; known blood alcohol content levels for arrests involving public intoxication, driving under the influence and minors in possession; and demographic information. (A sample of the reporting form is included in this report)

A total of 15,996 reporting forms were submitted by the twenty-three county detention facilities and the Volunteers of America Detox Center in Fremont County during the twelve-month data collection period January 1 through December 31, 2015. A complete accounting of the number of reports submitted by each county compared to the number of actual field-arrests book-ins is provided at the conclusion of the Data/Statistics pages.

DATA /STATISTICS

All information contained in the reporting forms that were submitted by the participating counties was entered into a master data base by week and by month. This information was subsequently assembled by category, by county, and by department in order to facilitate appropriate comparisons and further analysis.

A detailed breakdown of information for each county is available in a separate Supplemental Report.³ A sample of the county statistics is included in this report. Natrona County was selected as the sample to be included as this county generated the greatest number of arrest statistics.

The substance-related arrest data in this report is presented in a series of tables and graphs:

- ❖ Tables – Number of Arrests and Percentages
- ❖ Pie Chart – Methamphetamine, Alcohol and Other Drugs
- ❖ Tables – Felony/Misdemeanor Arrests Involving Alcohol
- ❖ Bar Graphs – Alcohol Arrests Percentages, BAC
- ❖ Pie Graphs – DUI, BAC, Traffic Crash Statistics
- ❖ Tables and Bar Graphs – Juvenile Statistics
- ❖ Pie Graph – Juvenile Demographics, Where Minors Obtain Alcohol
- ❖ Table – Natrona County Statistics (Sample County Statistics)

PLEASE NOTE: Cheyenne Police Department officers have an option to cite and release persons arrested for DUI for a first offense and the arrestee's vehicle has been impounded. These additional arrests statistics have not been included in the DUI statistics in this report (as they were not booked into a detention facility) but are added as a footnote in the DUI graph and in the Supplemental Report for Laramie County.



³ A PDF of this report and the accompanying Supplemental Report can be downloaded from the following websites: <http://wascop.com> and <http://jandaconsulting.com>

Statewide Arrests
January 1, 2015 - December 31, 2015

Numbers by Department

County	Total Offenses	Misde-meanor	Felony	Domestic Violence	Resist Arrest	Assault	Public Intox**	Alcohol Involved	Drugs Involved
Statewide	15,996	12,000	1,541	967	326	468	2,965	9,470	2,498
Albany	873	730	89	43	58	26	130	585	144
Big Horn	95	74	14	10	7	11	12	61	12
Campbell	1,232	999	103	78	13	41	153	817	247
Carbon	564	496	91	33	13	41	17	230	150
Converse	572	384	82	45	10	23	27	266	135
Crook	184	149	31	7	1	7	10	82	21
Fremont	1,353	1,029	85	68	35	43	381	950	119
Goshen	152	127	21	16	8		30	99	28
Hot Springs	88	64	9	5	1	7	3	43	14
Johnson	197	150	28	12	6	4	26	92	37
Laramie	2,195	1,728	227	235	78	37	631	1,298	394
Lincoln	234	198	32	26	3	20	7	146	48
Natrona	2,812	2,171	294	145	43	63	434	1,240	348
Niobrara	41	30	9	2		2		13	4
Park	415	298	53	31	5	23	29	207	69
Platte	254	178	52	13	3	14	3	98	114
Sheridan	665	522	54	50	9	16	71	453	116
Sublette	102	85	7	4	1	2	7	64	26
Sweetwater	1,392	1,233	198	68	14	50	211	629	327
Teton	294	243	7	7	1	2	73	256	19
Uinta	237	203	18	18	6	12	40	134	42
VOA Detox Ctr.	1,695	648		11			644	1,540	16
Washakie	197	144	17	30	9	18	20	97	30
Weston	153	117	20	10	2	6	6	70	38

Percents by Department *

County	Total Offenses	Misde-meanor	Felony	Domestic Violence	Resist Arrest	Assault	Public Intox**	Alcohol Involved	Drugs Involved
Statewide	15,996	75.02%	9.63%	6.05%	2.04%	2.93%	16.23%	59.20%	15.62%
Albany	873	83.62%	10.19%	4.93%	6.64%	2.98%	14.89%	67.01%	16.49%
Big Horn	95	77.89%	14.74%	10.53%	7.37%	11.58%	12.63%	64.21%	12.63%
Campbell	1,232	81.09%	8.36%	6.33%	1.06%	3.33%	12.42%	66.31%	20.05%
Carbon	564	87.94%	16.13%	5.85%	2.30%	7.27%	3.01%	40.78%	26.60%
Converse	572	67.13%	14.34%	7.87%	1.75%	4.02%	4.72%	46.50%	23.60%
Crook	184	80.98%	16.85%	3.80%	0.54%	3.80%	5.43%	44.57%	11.41%
Fremont	1,353	76.05%	6.28%	5.03%	2.59%	3.18%	28.16%	70.21%	8.80%
Goshen	152	83.55%	13.82%	10.53%	5.26%	0.00%	19.74%	65.13%	18.42%
Hot Springs	88	72.73%	10.23%	5.68%	1.14%	7.95%	3.41%	48.86%	15.91%
Johnson	197	76.14%	14.21%	6.09%	3.05%	2.03%	13.20%	46.70%	18.78%
Laramie	2,195	78.72%	10.34%	10.71%	3.55%	1.69%	28.75%	59.13%	17.95%
Lincoln	234	84.62%	13.68%	11.11%	1.28%	8.55%	2.99%	62.39%	20.51%
Natrona	2,812	77.20%	10.46%	5.16%	1.53%	2.24%	15.43%	44.10%	12.38%
Niobrara	41	73.17%	21.95%	4.88%	0.00%	4.88%	0.00%	31.71%	9.76%
Park	415	71.81%	12.77%	7.47%	1.20%	5.54%	6.99%	49.88%	16.63%
Platte	254	70.08%	20.47%	5.12%	1.18%	5.51%	1.18%	38.58%	44.88%
Sheridan	665	78.50%	8.12%	7.52%	1.35%	2.41%	10.68%	68.12%	17.44%
Sublette	102	83.33%	6.86%	3.92%	0.98%	1.96%	6.86%	62.75%	25.49%
Sweetwater	1,392	88.58%	14.22%	4.89%	1.01%	3.59%	15.16%	45.19%	23.49%
Teton	294	82.65%	2.38%	2.38%	0.34%	0.68%	24.83%	87.07%	6.46%
Uinta	237	85.65%	7.59%	7.59%	2.53%	5.06%	16.88%	56.54%	17.72%
VOA Detox Ctr.	1,695	38.23%	0.00%	0.65%	0.00%	0.00%	37.99%	90.86%	0.94%
Washakie	197	73.10%	8.63%	15.23%	4.57%	9.14%	10.15%	49.24%	15.23%
Weston	153	76.47%	13.07%	6.54%	1.31%	3.92%	3.92%	45.75%	24.84%

* Total percents may not equal 100 due to lack of information, or a single arrest involving multiple crimes.

** Total percent of Public Intox arrests do not include VOA Detox Center.

Statewide Arrests - Demographics
January 1, 2014 - December 31, 2014

Numbers by Department

County	Total Offenses	Misdemeanor	Felony	Residency			Female	Male	Unknown Gender	Average Age
				In County	In-State Visitor	Out of State				
Statewide	15,996	12,000	1,541	12,155	1,029	1,999	3,547	12,011	438	35.74
Albany	873	730	89	544	107	188	157	679	37	30.67
Big Horn	95	74	14	71	11	9	21	70	4	36.71
Campbell	1,232	999	103	986	53	124	290	920	22	33.38
Carbon	564	496	91	293	46	223	96	456	12	34.42
Converse	572	384	82	365	102	75	129	432	11	33.14
Crook	184	149	31	80	64	36	41	141	2	36.34
Fremont	1,353	1,029	85	1,150	40	54	306	976	71	35.62
Goshen	152	127	21	104	13	29	36	113	3	34.29
Hot Springs	88	64	9	68	12	6	25	59	4	34.13
Johnson	197	150	28	94	50	47	38	155	4	35.51
Laramie	2,195	1,728	227	1,745	68	276	433	1694	68	36.01
Lincoln	234	198	32	146	19	55	55	167	12	36.63
Natrona	2,812	2,171	294	2,336	137	171	683	2038	91	34.45
Niobrara	41	30	9	22	9	9	14	25	2	38.16
Park	415	298	53	324	32	24	122	280	13	33.73
Platte	254	178	52	91	64	90	55	193	6	34.28
Sheridan	665	522	54	466	38	101	172	481	12	36.81
Sublette	102	85	7	51	13	27	24	76	2	35.84
Sweetwater	1,392	1,233	198	1,057	65	263	385	1006	1	32.83
Teton	294	243	7	144	16	71	49	236	9	34.08
Uinta	237	203	18	156	17	55	61	171	5	33.92
VOA Detox Ctr.	1,695	648		1,601	30	19	257	1406	32	45.74
Washakie	197	144	17	160	15	14	60	135	2	33.88
Weston	153	117	20	101	8	33	38	102	13	34.19

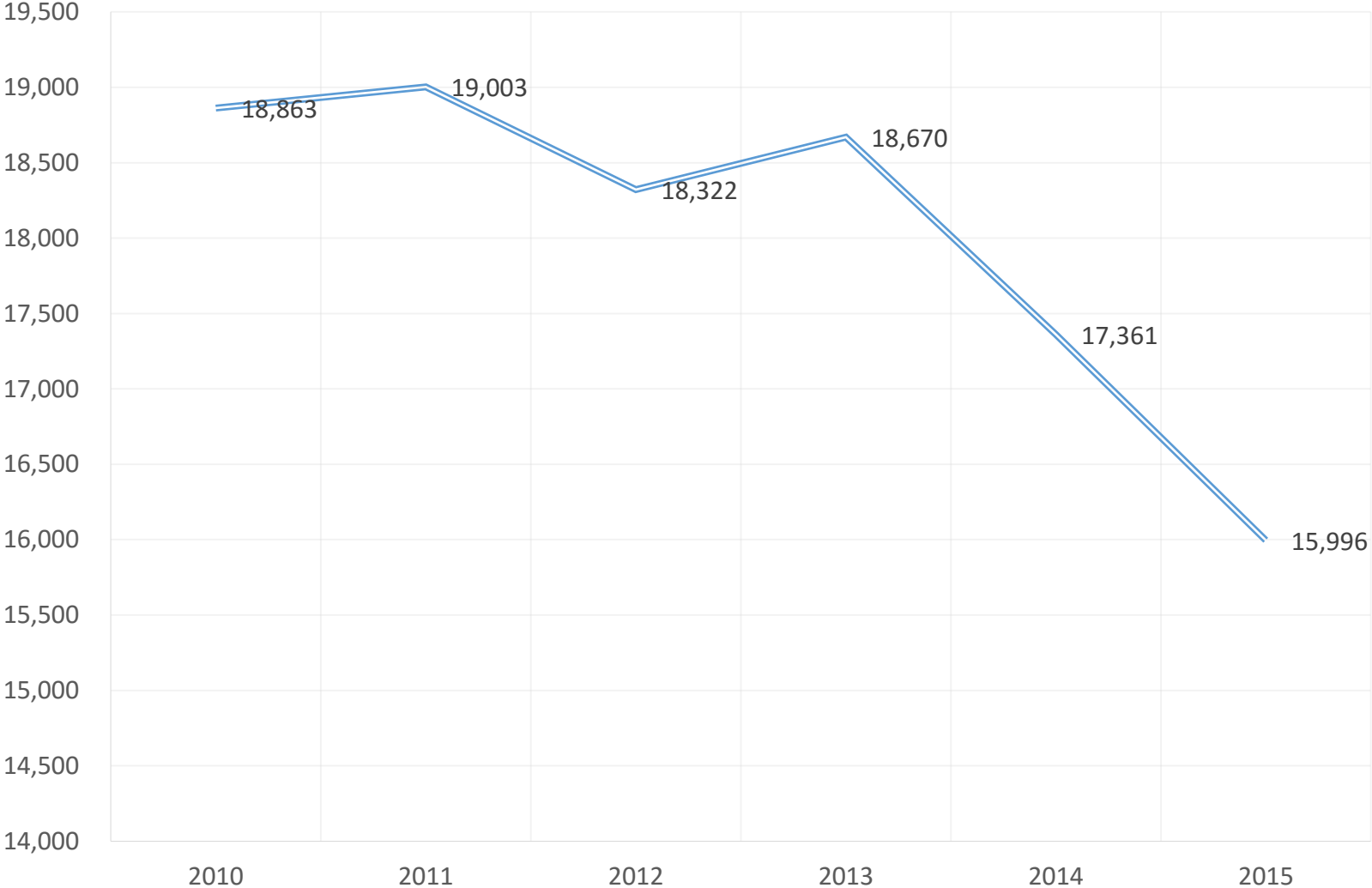
Percents by Department *

County	Total Offenses	Misdemeanor	Felony	Residency			Female	Male	Unkown Gender
				In County	In-State Visitor	Out of State			
Statewide	15,996	75.02%	9.63%	75.99%	6.43%	12.50%	22.17%	75.09%	2.74%
Albany	873	83.62%	10.19%	62.31%	12.26%	21.53%	17.98%	77.78%	4.24%
Big Horn	95	77.89%	14.74%	74.74%	11.58%	9.47%	22.11%	73.68%	4.21%
Campbell	1,232	81.09%	8.36%	80.03%	4.30%	10.06%	23.54%	74.68%	1.79%
Carbon	564	87.94%	16.13%	51.95%	8.16%	39.54%	17.02%	80.85%	2.13%
Converse	572	67.13%	14.34%	63.81%	17.83%	13.11%	22.55%	75.52%	1.92%
Crook	184	80.98%	16.85%	43.48%	34.78%	19.57%	22.28%	76.63%	1.09%
Fremont	1,353	76.05%	6.28%	85.00%	2.96%	3.99%	22.62%	72.14%	5.25%
Goshen	152	83.55%	13.82%	68.42%	8.55%	19.08%	23.68%	74.34%	1.97%
Hot Springs	88	72.73%	10.23%	77.27%	13.64%	6.82%	28.41%	67.05%	4.55%
Johnson	197	76.14%	14.21%	47.72%	25.38%	23.86%	19.29%	78.68%	2.03%
Laramie	2,195	78.72%	10.34%	79.50%	3.10%	12.57%	19.73%	77.18%	3.10%
Lincoln	234	84.62%	13.68%	62.39%	8.12%	23.50%	23.50%	71.37%	5.13%
Natrona	2,812	77.20%	10.46%	83.07%	4.87%	6.08%	24.29%	72.48%	3.24%
Niobrara	41	73.17%	21.95%	53.66%	21.95%	21.95%	34.15%	60.98%	4.88%
Park	415	71.81%	12.77%	78.07%	7.71%	5.78%	29.40%	67.47%	3.13%
Platte	254	70.08%	20.47%	35.83%	25.20%	35.43%	21.65%	75.98%	2.36%
Sheridan	665	78.50%	8.12%	70.08%	5.71%	15.19%	25.86%	72.33%	1.80%
Sublette	102	83.33%	6.86%	50.00%	12.75%	26.47%	23.53%	74.51%	1.96%
Sweetwater	1,392	88.58%	14.22%	75.93%	4.67%	18.89%	27.66%	72.27%	0.07%
Teton	294	82.65%	2.38%	48.98%	5.44%	24.15%	16.67%	80.27%	3.06%
Uinta	237	85.65%	7.59%	65.82%	7.17%	23.21%	25.74%	72.15%	2.11%
VOA Detox Ctr.	1,695	38.23%	0.00%	94.45%	1.77%	1.12%	15.16%	82.95%	1.89%
Washakie	197	73.10%	8.63%	81.22%	7.61%	7.11%	30.46%	68.53%	1.02%
Weston	153	76.47%	13.07%	66.01%	5.23%	21.57%	24.84%	66.67%	8.50%

* Total percents may not equal 100 due to lack of information, or a single arrest involving multiple crimes.

TOTAL NUMBER OF CUSTODIAL ARRESTS STATEWIDE

— Total Arrests



Alcohol and Drug Involvement

Total Offenses

County Department	Total Offenses	Number Involving Alcohol	Percent Involving Alcohol	Number Involving Drugs	Percent Involving Drugs
Statewide	15,996	9,470	59.20%	2,498	15.62%
Albany	873	585	67.01%	144	16.49%
Big Horn	95	61	64.21%	12	12.63%
Campbell	1,232	817	66.31%	247	20.05%
Carbon	564	230	40.78%	150	26.60%
Converse	572	266	46.50%	135	23.60%
Crook	184	82	44.57%	21	11.41%
Fremont	1,353	950	70.21%	119	8.80%
Goshen	152	99	65.13%	28	18.42%
Hot Springs	88	43	48.86%	14	15.91%
Johnson	197	92	46.70%	37	18.78%
Laramie	2,195	1,298	59.13%	394	17.95%
Lincoln	234	146	62.39%	48	20.51%
Natrona	2,812	1,240	44.10%	348	12.38%
Niobrara	41	13	31.71%	4	9.76%
Park	415	207	49.88%	69	16.63%
Platte	254	98	38.58%	114	44.88%
Sheridan	665	453	68.12%	116	17.44%
Sublette	102	64	62.75%	26	25.49%
Sweetwater	1,392	629	45.19%	327	23.49%
Teton	294	256	87.07%	19	6.46%
Uinta	237	134	56.54%	42	17.72%
VOA Detox Ctr.	1,695	1,540	90.86%	16	0.94%
Washakie	197	97	49.24%	30	15.23%
Weston	153	70	45.75%	38	24.84%

Felony Offenses

County Department	Felony Offenses	Number Involving Alcohol	Percent Involving Alcohol	Number Involving Drugs	Percent Involving Drugs
Statewide	1,541	293	19.01%	540	35.04%
Albany	89	16	17.98%	34	38.20%
Big Horn	14	6	42.86%	3	21.43%
Campbell	103	30	29.13%	42	40.78%
Carbon	91	13	14.29%	43	47.25%
Converse	82	15	18.29%	33	40.24%
Crook	31	4	12.90%	9	29.03%
Fremont	85	22	25.88%	22	25.88%
Goshen	21	3	14.29%	13	61.90%
Hot Springs	9	4	44.44%	3	33.33%
Johnson	28	5	17.86%	13	46.43%
Laramie	227	44	19.38%	74	32.60%
Lincoln	32	9	28.13%	11	34.38%
Natrona	294	49	16.67%	82	27.89%
Niobrara	9	2	22.22%	2	22.22%
Park	53	9	16.98%	10	18.87%
Platte	52	8	15.38%	33	63.46%
Sheridan	54	13	24.07%	17	31.48%
Sublette	7	3	42.86%	2	28.57%
Sweetwater	198	27	13.64%	76	38.38%
Teton	7	1	14.29%	4	57.14%
Uinta	18	3	16.67%	6	33.33%
VOA Detox Ctr.					
Washakie	17	3	17.65%	4	23.53%
Weston	20	6	30.00%	4	20.00%

Misdemeanor Offenses

County Department	Misdemeanor Offenses	Number Involving Alcohol	Percent Involving Alcohol	Number Involving Drugs	Percent Involving Drugs
Statewide	12,000	11,642	97.02%	1,805	15.04%
Albany	730	712	97.53%	104	14.25%
Big Horn	74	72	97.30%	9	12.16%
Campbell	999	978	97.90%	181	18.12%
Carbon	496	484	97.58%	124	25.00%
Converse	384	376	97.92%	89	23.18%
Crook	149	147	98.66%	14	9.40%
Fremont	1,029	1013	98.45%	86	8.36%
Goshen	127	126	99.21%	16	12.60%
Hot Springs	64	64	100.00%	12	18.75%
Johnson	150	149	99.33%	27	18.00%
Laramie	1,728	1684	97.45%	273	15.80%
Lincoln	198	196	98.99%	39	19.70%
Natrona	2,171	2084	95.99%	229	10.55%
Niobrara	30	30	100.00%	3	10.00%
Park	298	245	82.21%	47	15.77%
Platte	178	163	91.57%	69	38.76%
Sheridan	522	500	95.79%	91	17.43%
Sublette	85	85	100.00%	22	25.88%
Sweetwater	1,233	1187	96.27%	273	22.14%
Teton	243	241	99.18%	12	4.94%
Uinta	203	202	99.51%	33	16.26%
VOA Detox Ctr.	648	648	100.00%	1	0.15%
Washakie	144	139	96.53%	22	15.28%
Weston	117	117	100.00%	29	24.79%

Domestic Violence

County Department	Domestic Violence Offenses	Number Involving Alcohol	Percent Involving Alcohol	Number Involving Drugs	Percent Involving Drugs
Statewide	967	492	50.88%	45	4.65%
Albany	43	20	46.51%	2	4.65%
Big Horn	10	5	50.00%		
Campbell	78	39	50.00%	2	2.56%
Carbon	33	10	30.30%	5	15.15%
Converse	45	22	48.89%	3	6.67%
Crook	7	2	28.57%		
Fremont	68	49	72.06%	4	5.88%
Goshen	16	8	50.00%		
Hot Springs	5	4	80.00%	1	20.00%
Johnson	12	9	75.00%	1	8.33%
Laramie	235	97	41.28%	14	5.96%
Lincoln	26	17	65.38%	1	3.85%
Natrona	145	83	57.24%	3	2.07%
Niobrara	2				
Park	31	17	54.84%		
Platte	13	9	69.23%		
Sheridan	50	29	58.00%	2	4.00%
Sublette	4	1	25.00%	1	25.00%
Sweetwater	68	31	45.59%	3	4.41%
Teton	7	5	71.43%		
Uinta	18	5	27.78%		
VOA Detox Ctr.	11	11	100.00%	1	9.09%
Washakie	30	17	56.67%	1	3.33%
Weston	10	2	20.00%	1	10.00%

Resisting Arrest

County Department	Resisting Arrest Offenses	Number Involving Alcohol	Percent Involving Alcohol	Number Involving Drugs	Percent Involving Drugs
Statewide	326	218	66.87%	32	9.82%
Albany	58	39	67.24%	5	8.62%
Big Horn	7	4	57.14%		
Campbell	13	9	69.23%	2	15.38%
Carbon	13	7	53.85%	2	15.38%
Converse	10	7	70.00%	1	10.00%
Crook	1			1	100.00%
Fremont	35	26	74.29%	4	11.43%
Goshen	8	7	87.50%	2	25.00%
Hot Springs	1	1	100.00%		
Johnson	6	5	83.33%		
Laramie	78	54	69.23%	1	1.28%
Lincoln	3	2	66.67%	1	33.33%
Natrona	43	24	55.81%	6	13.95%
Niobrara					
Park	5	4	80.00%	2	40.00%
Platte	3	2	66.67%		
Sheridan	9	6	66.67%	2	22.22%
Sublette	1	1	100.00%		
Sweetwater	14	11	78.57%		
Teton	1	1	100.00%		
Uinta	6	2	33.33%	1	16.67%
VOA Detox Ctr.					
Washakie	9	6	66.67%	1	11.11%
Weston	2			1	50.00%

Assault

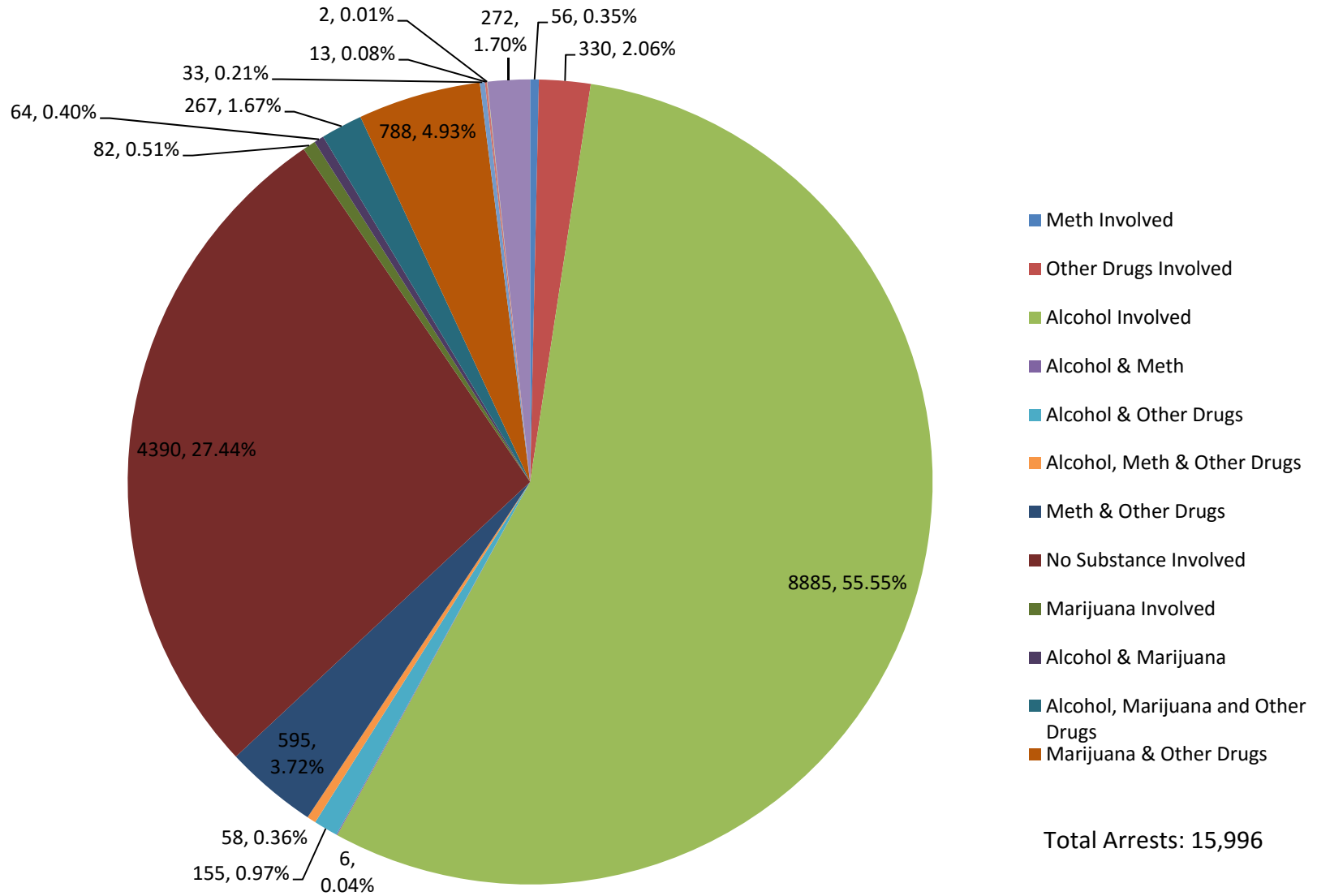
County Department	Assault Offenses	Number Involving Alcohol	Percent Involving Alcohol	Number Involving Drugs	Percent Involving Drugs
Statewide	468	244	52.14%	38	8.12%
Albany	26	12	46.15%	3	11.54%
Big Horn	11	4	36.36%	1	9.09%
Campbell	41	26	63.41%	2	4.88%
Carbon	41	19	46.34%	4	9.76%
Converse	23	16	69.57%		
Crook	7	3	42.86%	2	28.57%
Fremont	43	29	67.44%	5	11.63%
Goshen					
Hot Springs	7	4	57.14%	1	14.29%
Johnson	4	4	100.00%		
Laramie	37	16	43.24%	4	10.81%
Lincoln	20	12	60.00%		
Natrona	63	27	42.86%	7	11.11%
Niobrara	2				
Park	23	14	60.87%	2	8.70%
Platte	14	10	71.43%		
Sheridan	16	11	68.75%	3	18.75%
Sublette	2	2	100.00%		
Sweetwater	50	11	22.00%	4	8.00%
Teton	2	1	50.00%		
Uinta	12	8	66.67%		
VOA Detox Ctr.					
Washakie	18	12	66.67%		
Weston	6	3	50.00%		

Meth, Marijuana, Drugs & Public Intoxication

County Department	Total Offenses	Meth Involved	% Meth of Total	Marijuana Involved	% Marij. of Total	Drugs Involved	% Drugs of Total	Public Intox.	% PI of Total**	Pub. Intox. Ave. BAC
Statewide	15,996	1035	6.47%	1,521	9.51%	2,498	15.62%	2,965	16.23%	0.2391
Albany	873	19	2.18%	118	13.52%	144	16.49%	130	14.89%	0.2075
Big Horn	95	2	2.11%	8	8.42%	12	12.63%	12	12.63%	0.1693
Campbell	1,232	138	11.20%	123	9.98%	247	20.05%	153	12.42%	0.2220
Carbon	564	48	8.51%	94	16.67%	150	26.60%	17	3.01%	0.2737
Converse	572	73	12.76%	79	13.81%	135	23.60%	27	4.72%	0.2238
Crook	184	8	4.35%	15	8.15%	21	11.41%	10	5.43%	0.2068
Fremont	1,353	58	4.29%	36	2.66%	119	8.80%	381	28.16%	0.2672
Goshen	152	12	7.89%	20	13.16%	28	18.42%	30	19.74%	0.2287
Hot Springs	88	10	11.36%	8	9.09%	14	15.91%	3	3.41%	
Johnson	197	13	6.60%	24	12.18%	37	18.78%	26	13.20%	0.2296
Laramie	2,195	205	9.34%	290	13.21%	394	17.95%	631	28.75%	0.2125
Lincoln	234	11	4.70%	15	6.41%	48	20.51%	7	2.99%	0.2000
Natrona	2,812	178	6.33%	203	7.22%	348	12.38%	434	15.43%	0.2242
Niobrara	41	3	7.32%	2	4.88%	4	9.76%		0.00%	
Park	415	23	5.54%	15	3.61%	69	16.63%	29	6.99%	0.2022
Platte	254	27	10.63%	99	38.98%	114	44.88%	3	1.18%	.156.
Sheridan	665	36	5.41%	49	7.37%	116	17.44%	71	10.68%	0.2103
Sublette	102	6	5.88%			26	25.49%	7	6.86%	0.1868
Sweetwater	1,392	112	8.05%	216	15.52%	327	23.49%	211	15.16%	0.1736
Teton	294	3	1.02%	14	4.76%	19	6.46%	73	24.83%	0.2166
Uinta	237	9	3.80%	28	11.81%	42	17.72%	40	16.88%	0.1831
VOA Detox Ctr.	1,695	14	0.83%	9	0.53%	16	0.94%	644	37.99%	0.2641
Washakie	197	12	6.09%	22	11.17%	30	15.23%	20	10.15%	0.2485
Weston	153	15	9.80%	34	22.22%	38	24.84%	6	3.92%	0.3025

** VOA Detox Ctr. not included in statewide public intoxication percent.

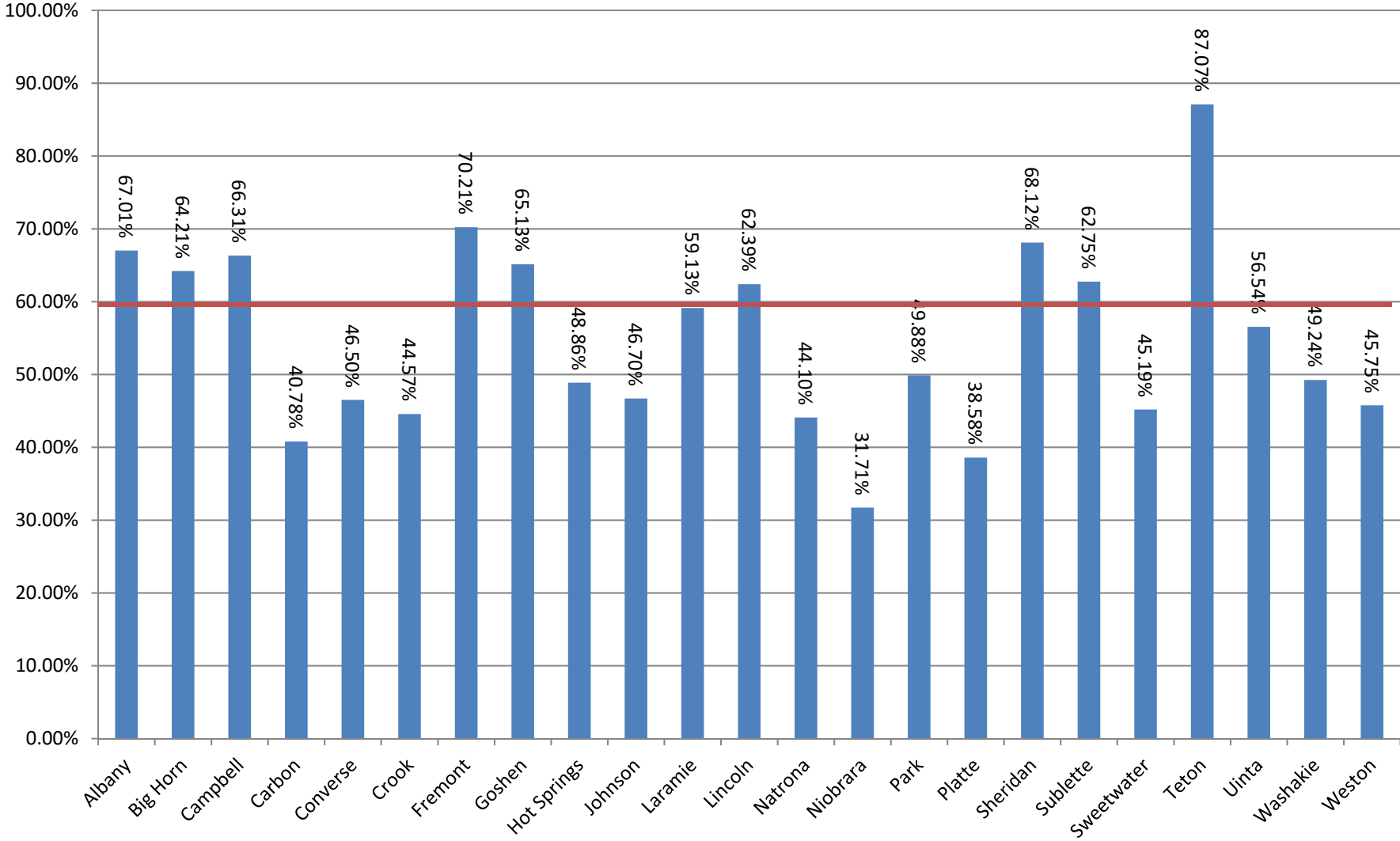
Meth, Alcohol and Other Drugs Involved Arrests



Given: Number of Arrests, Percentage of Total Arrests

Alcohol Involved Arrests as a Percentage of All Arrests by County

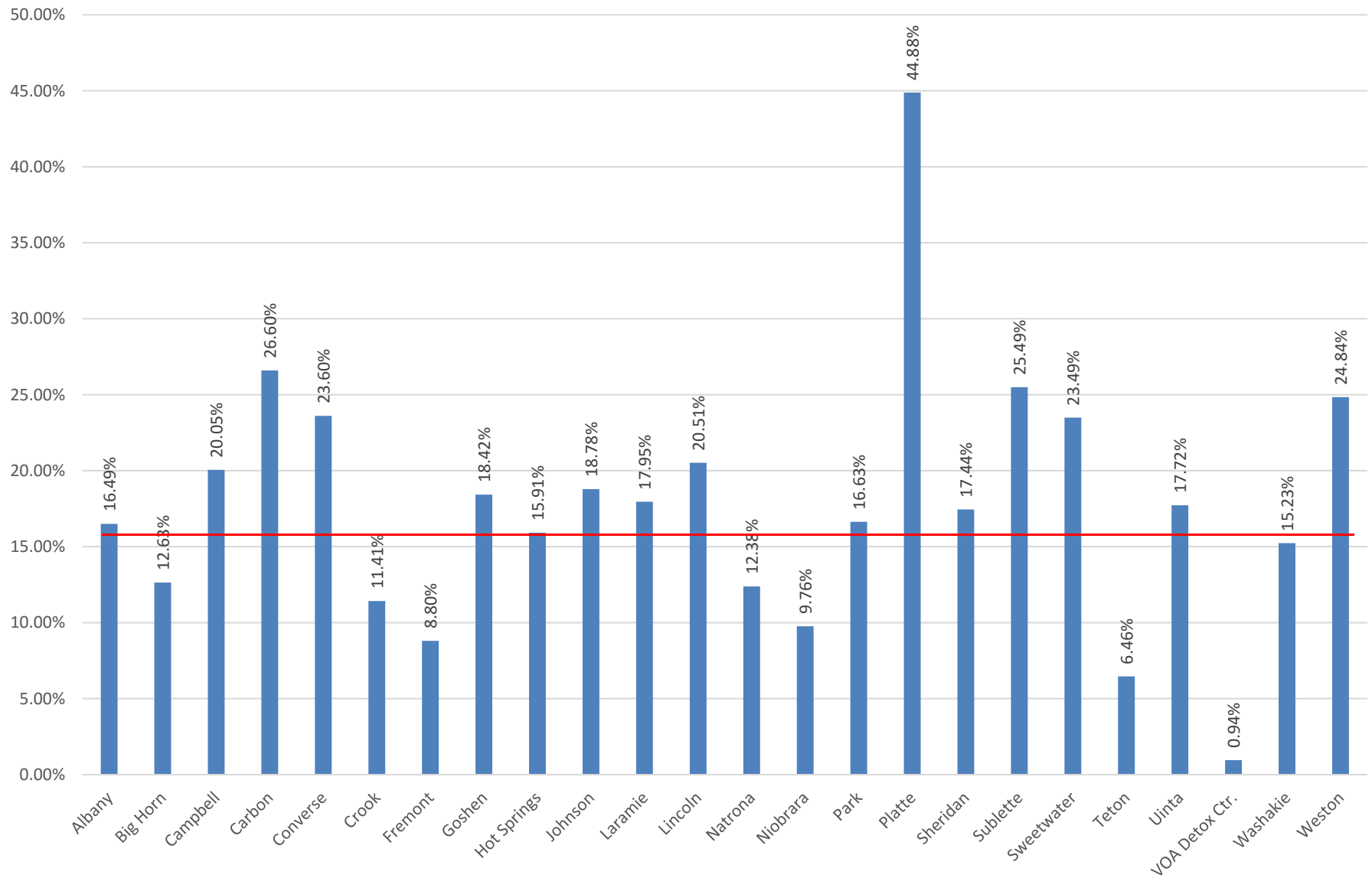
(Red line indicates statewide percent - 59.20%)



Given: Number of Arrests, Percentage of Total Arrests

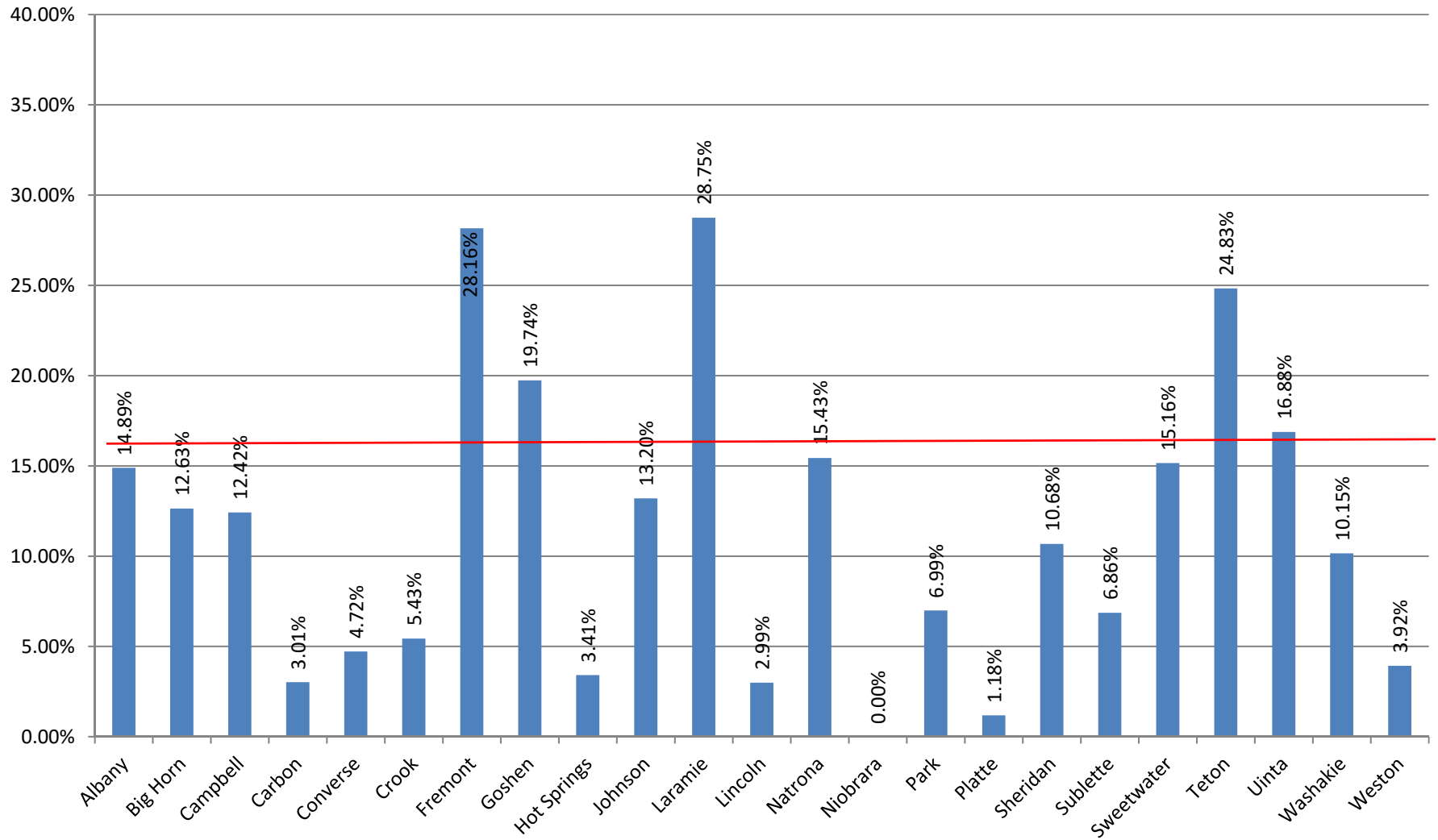
Other Drugs Involved as a Percentage of All Arrests by County

(Red line indicates statewide percent - 15.62%)



Public Intoxication Arrests as a Percentage of All Arrests by County

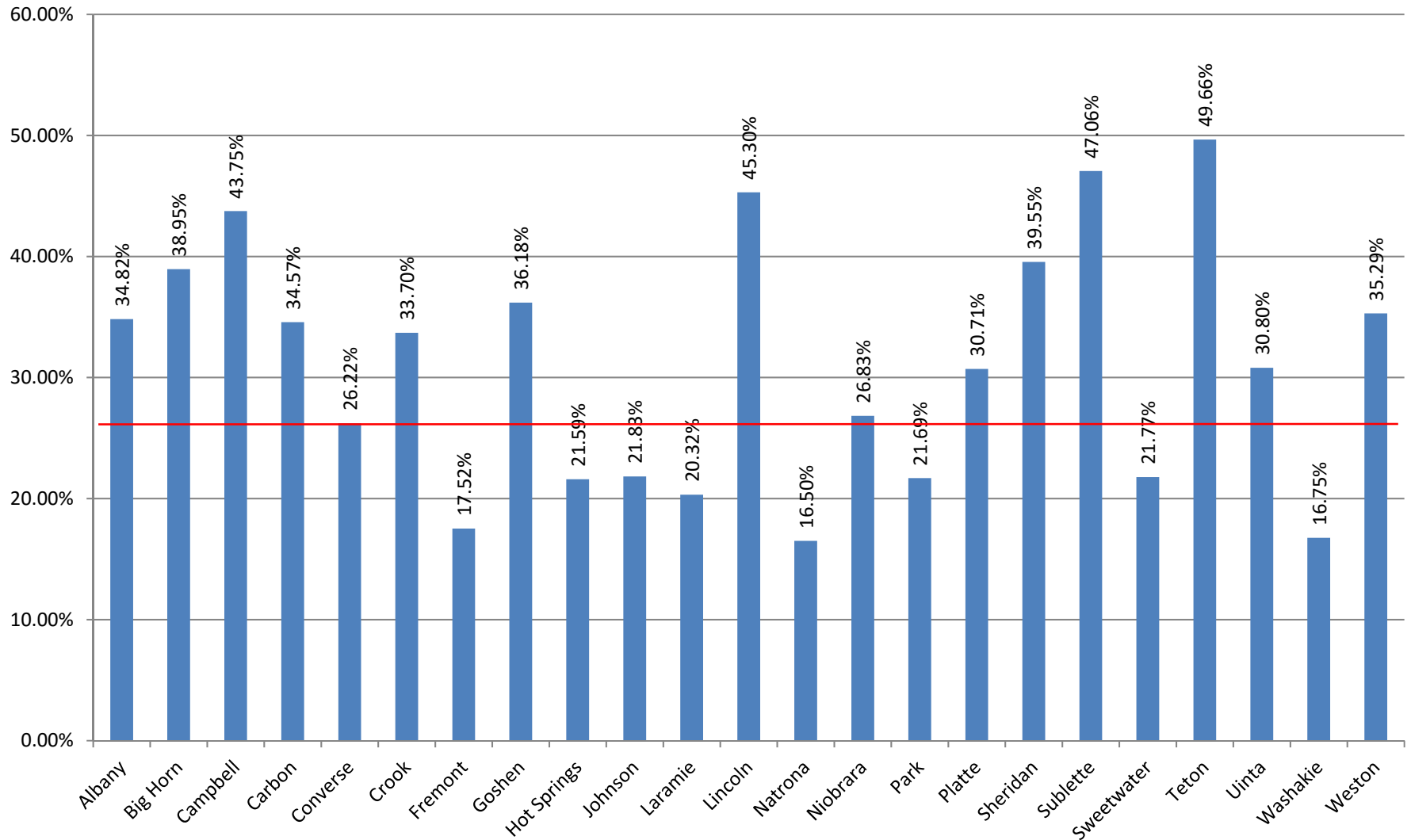
(Red line indicates statewide percent - 16.23%)



* Excluding VOA Detox Center

DUI Arrests as a Percentage of All Arrests by County

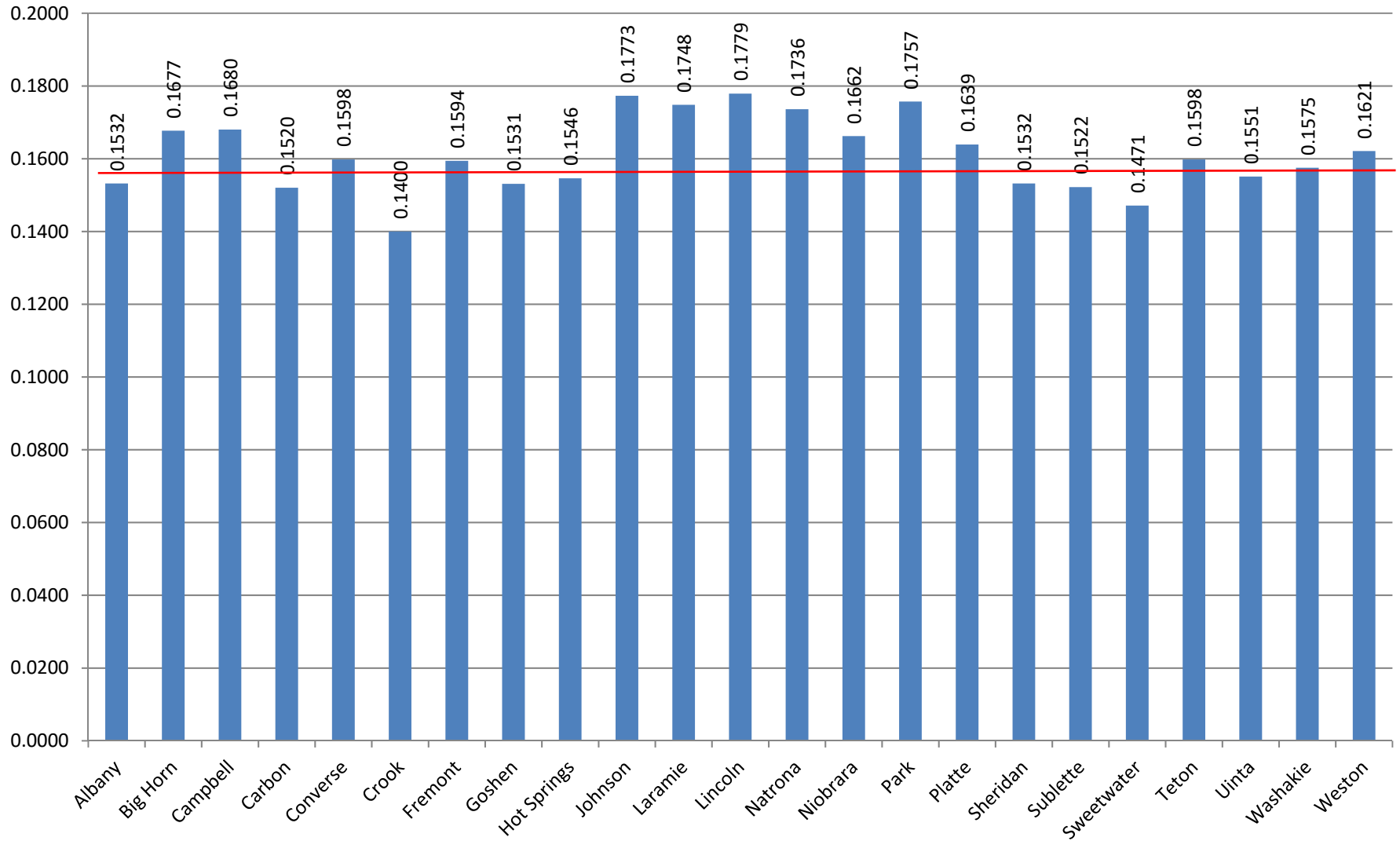
(Red line indicates statewide percent - 26.27%)



* Excludes VOA Detox Center

Average DUI BAC

Red line indicates statewide average - 0.1574



Excludes Fremont Alcohol Crisis Center.

DUI Arrests

County Department	Total Offenses	DUI Offenses	% DUI Of Total*	Ave. BAC	DUI Involving Drugs	% DUI Involving Drugs
Statewide	15,996	3,757	26.27%	0.1574	507	13.49%
Albany	873	304	34.82%	0.1532	48	15.79%
Big Horn	95	37	38.95%	0.1677	4	10.81%
Campbell	1,232	539	43.75%	0.1480	46	8.53%
Carbon	564	195	34.57%	0.1520	47	24.10%
Converse	572	150	26.22%	0.1598	30	20.00%
Crook	184	62	33.70%	0.1400	4	6.45%
Fremont	1,353	237	17.52%	0.1594	35	14.77%
Goshen	152	55	36.18%	0.1531	5	9.09%
Hot Springs	88	19	21.59%	0.1546	1	5.26%
Johnson	197	43	21.83%	0.1773	7	16.28%
Laramie **	2,195	446	20.32%	0.1748	61	13.68%
Lincoln	234	106	45.30%	0.1779	15	14.15%
Natrona	2,812	464	16.50%	0.1736	63	13.58%
Niobrara	41	11	26.83%	0.1662	1	9.09%
Park	415	90	21.69%	0.1757	16	17.78%
Platte	254	78	30.71%	0.1639	20	25.64%
Sheridan	665	263	39.55%	0.1532	29	11.03%
Sublette	102	48	47.06%	0.1522	8	16.67%
Sweetwater	1,392	303	21.77%	0.1471	40	13.20%
Teton	294	146	49.66%	0.1598	7	4.79%
Uinta	237	73	30.80%	0.1551	6	8.22%
VOA Detox Ctr. *	1,695	1	0.06%			
Washakie	197	33	16.75%	0.1575	8	24.24%
Weston	153	54	35.29%	0.1621	6	11.11%

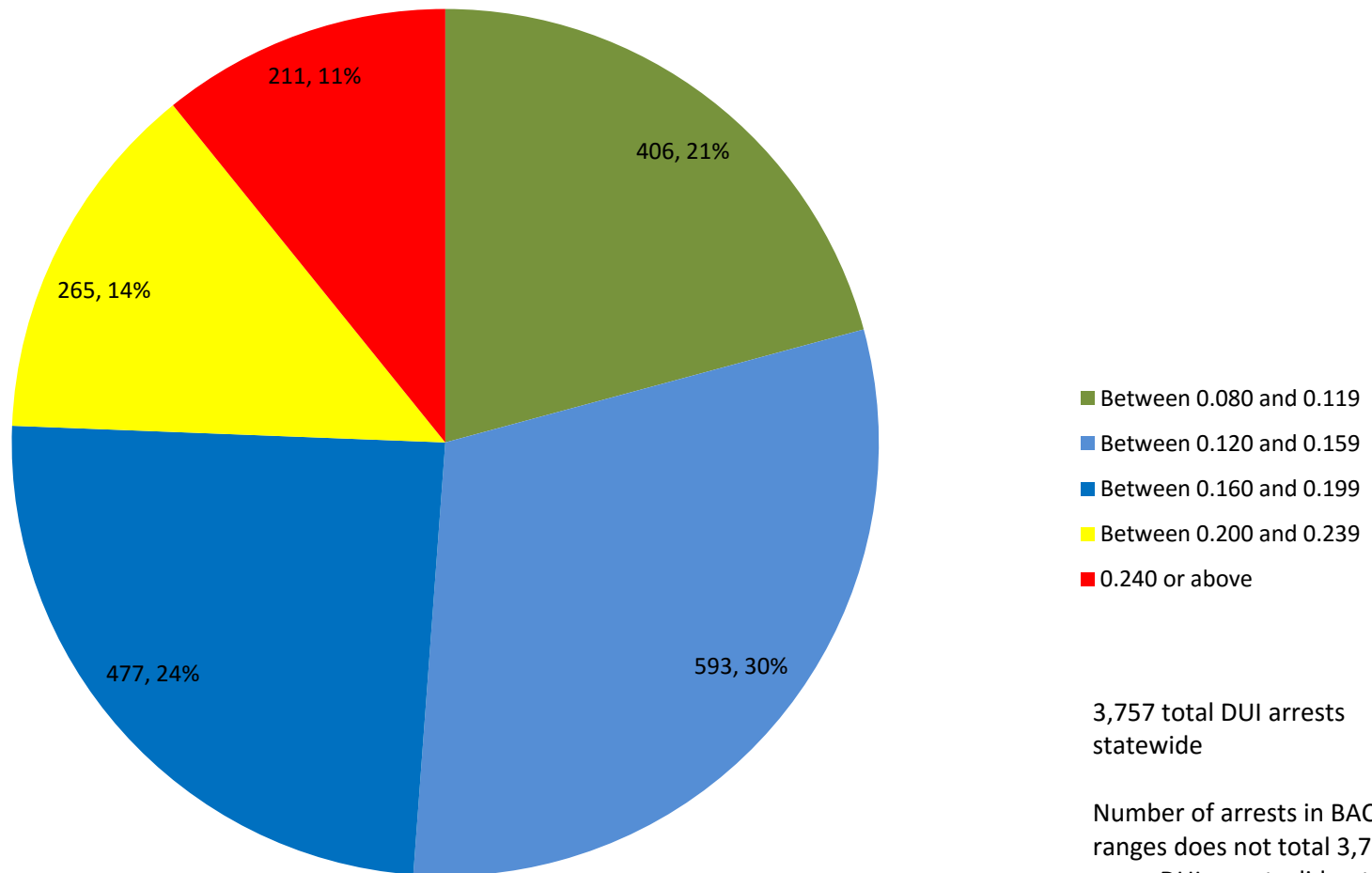
* VOA Detox Center not included in DUI as percent of the total.

Traffic Crashes

County Department	Traffic Crashes	Alcohol Involved	% Alcohol Involved	Average BAC	Drugs Involved	% Drugs Involved
Statewide	576	472	81.94%	0.1676	83	14.41%
Albany	51	43	84.31%	0.1780	6	11.76%
Big Horn	4	4	100.00%	0.1930		
Campbell	64	54	84.38%	0.1645	11	17.19%
Carbon	20	12	60.00%	0.1346	7	35.00%
Converse	16	10	62.50%	0.1933	5	31.25%
Crook	14	11	78.57%	0.1300	1	7.14%
Fremont	36	29	80.56%	0.1486	8	22.22%
Goshen	4	3	75.00%	0.1300		
Hot Springs	4	4	100.00%	0.1500		
Johnson	14	12	85.71%	0.1958	1	7.14%
Laramie	66	52	78.79%	0.1787	10	15.15%
Lincoln	22	22	100.00%	0.1548	3	13.64%
Natrona	122	100	81.97%	0.1723	15	12.30%
Niobrara						
Park	19	14	73.68%	0.1927	4	21.05%
Platte	11	8	72.73%	0.1730	2	18.18%
Sheridan	40	35	87.50%	0.1625	4	10.00%
Sublette	3	2	66.67%	0.1800	1	33.33%
Sweetwater	16	12	75.00%	0.1970	2	12.50%
Teton	20	20	100.00%	0.1731	1	5.00%
Uinta	16	14	87.50%	0.1778		
VOA Detox Ctr.	1	1	100.00%	0.2300		
Washakie	7	4	57.14%	0.1167	2	28.57%
Weston	6	6	100.00%	0.1720		

DUI Arrests with Reported BAC in Each Range

Number of DUI Arrests with BAC in each Range



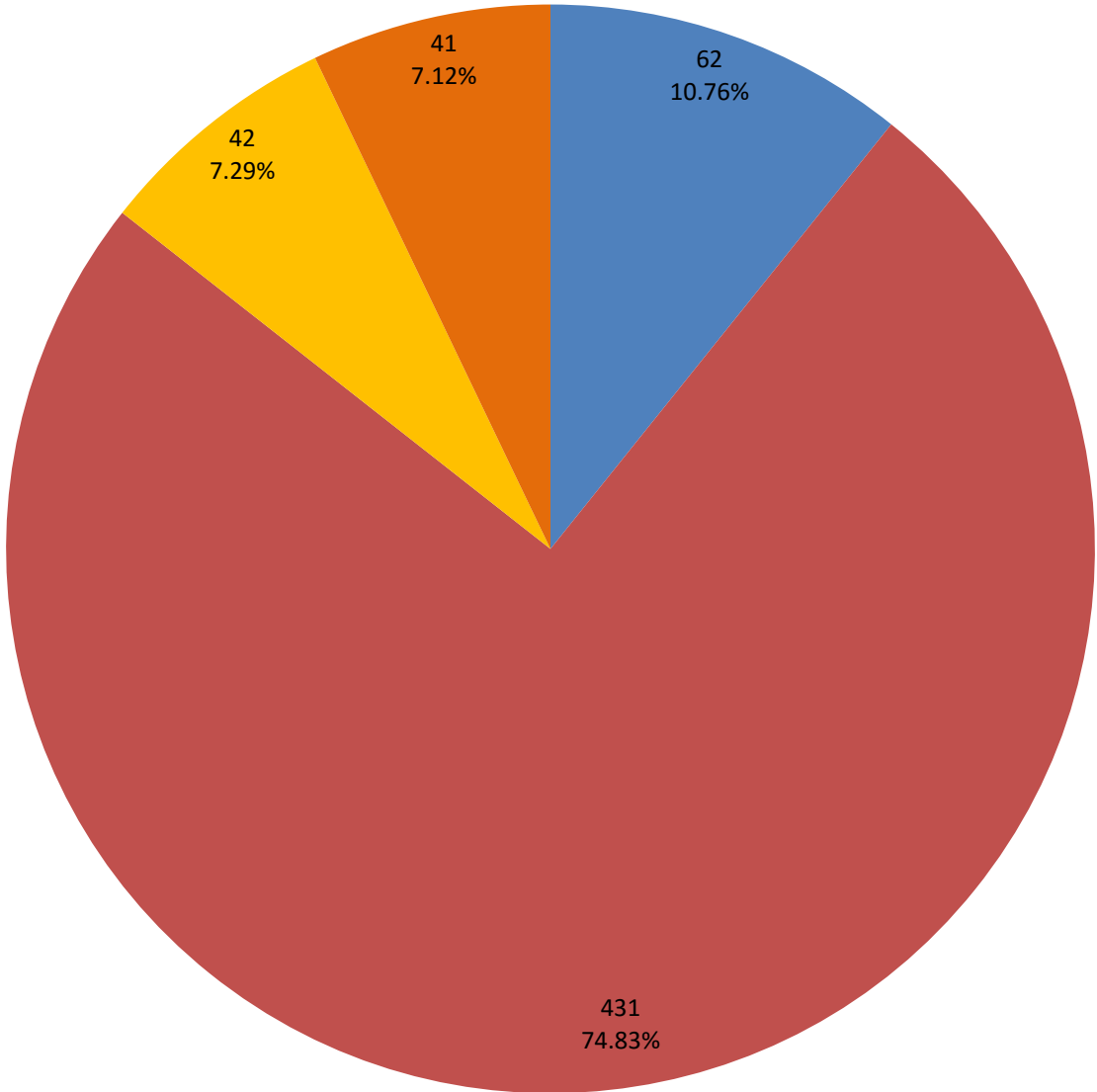
- Between 0.080 and 0.119
- Between 0.120 and 0.159
- Between 0.160 and 0.199
- Between 0.200 and 0.239
- 0.240 or above

3,757 total DUI arrests statewide

Number of arrests in BAC ranges does not total 3,757; some DUI arrests did not report BAC

Given: Number of DUI arrests in range, percent of all DUI arrests with BAC reported

Traffic Crashes - Alcohol Involved

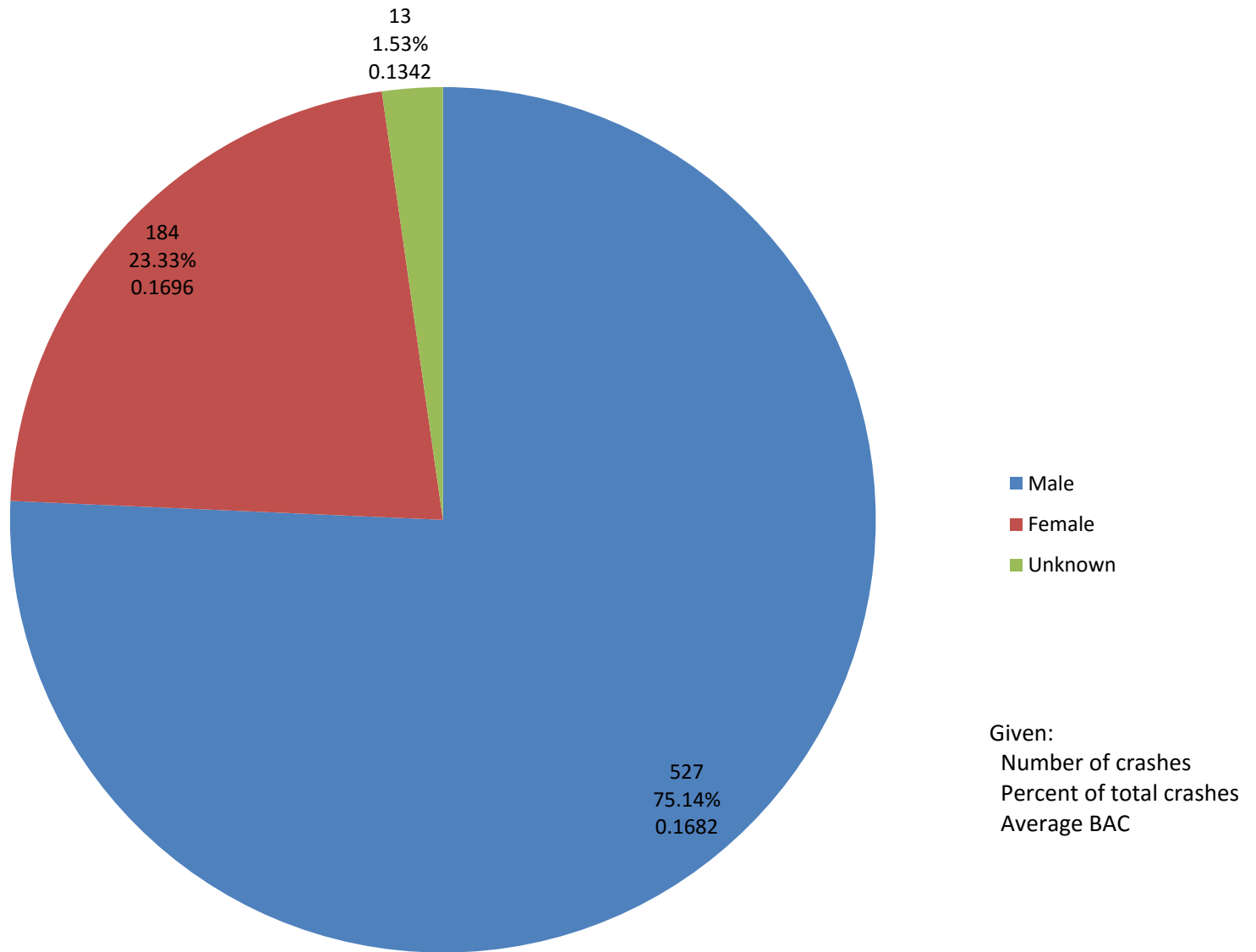


- No alcohol or other drugs involved
- Alcohol involved
- Other drugs involved
- Alcohol and other drugs involved

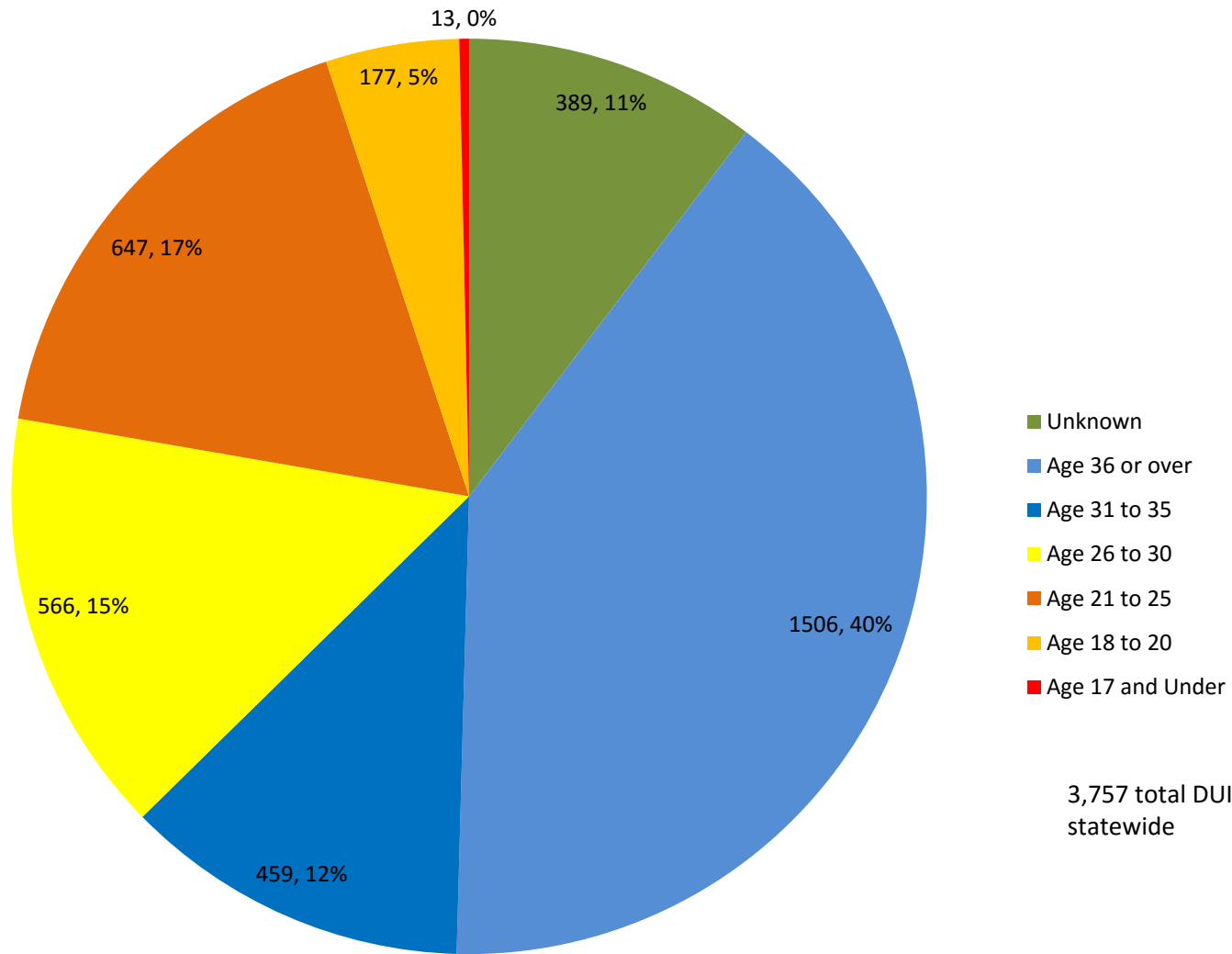
Average BAC: 0.1654

Given: Number of traffic crashes, percentage of all traffic crashes

Traffic Crashes by Gender



DUI Arrests by Age



Given: Number of DUI arrests in range, percent of all DUI arrests

Location of Alcohol Consumption and Point of Sale by Department

Department	Alcohol Involved	Location of Consumption							Point of Sale						
		Home	Bar	Private Party	Public Event	Car	Other	No Response	Home	Bar	Drive Up	Private Party	Public Event	Liquor Store	No Response
Albany	585	90	161	45	10	15	17	117	38	135	1	25	11	25	142
Big Horn	61	14	19	3	1	6	2	8	7	13			2	7	11
Campbell	817	161	332	19	11	10	34	195	114	303	3	16	12	63	197
Carbon	230	41	69	6	1	15	12	11	19	52	1	3	3	16	22
Converse	266	69	87	16	7	14	22	21	18	73	5	9	5	14	38
Crook	82	7	29	2	2	13	17	10	5	34	1	4	1	17	14
Fremont	950	147	70	23	6	29	56	467	62	61	1	8		39	538
Goshen	99	2	12	1				67		8		1			
Hot Springs	43	13	13	2		2	5	2	6	13		2		4	5
Johnson	92	12	29	4	2	10	7	17	7	24	1	4		1	24
Laramie	1,298	285	295	9	46	33	207	295	108	314	10	12	30	303	310
Lincoln	146	30	41	8	2	11	7	18	12	35		3	1	7	35
Natrona	1,240	228	253	39	18	44	83	158	124	198	3	26	9	79	210
Niobrara	13	3	1			4	1	1	1	1				3	1
Park	207	69	63	6	1	8	13	20	32	57	2	6	2	28	24
Platte	98	30	31	6	3	11	9	6	12	37	6	4	1	23	10
Sheridan	453	62	71	12	5	13	11	166	27	59	1	8	1	27	167
Sublette	64	10	32			1	7	10	7	30				7	12
Sweetwater	629	103	129	16	13	7	32	341	15	132		10	9	74	361
Teton	256	24	124	14	10	14	35	31	10	108		13	14	43	35
Uinta	134	16	37	5	8	16	9	40	5	35		6	6	16	52
VOA Detox Ctr.	1,540	36	19	1	2	3	69	1387	10	10	1	1	2	39	1434
Washakie	97	22	27	9	3	4	2	21	12	24		8	1	8	28
Weston	70	17	22	5	1	5	4	11	7	16		3	2	7	14
Statewide Totals	9,470	1,491	1,966	251	152	288	661	3,420	658	1,772	36	172	112	850	3,684

Statewide Juvenile Arrests
January 1, 2015 - December 31, 2015

Numbers by Department

County	Total Offenses	Misde-meanor	Felony	Domestic Violence	Resist Arrest	Assault	Public Intox	Alcohol Involved	Drugs Involved
Statewide	88	66	20	1	1	5	0	22	24
Albany	11	8	2		1	2		4	4
Big Horn									
Campbell	6	6						1	1
Carbon	5	3	2			1		1	2
Converse	2	2						1	1
Crook	3	3							
Fremont	18	15	2			1		6	5
Goshen									
Hot Springs									
Johnson	1	1						1	
Laramie	1								
Lincoln									
Natrona	1		1						
Niobrara									
Park	9	5	2						3
Platte	2	2	1					1	
Sheridan									
Sublette									
Sweetwater	27	19	10	1		1		5	8
Teton	1	1						1	
Uinta									
VOA Detox Center									
Washakie									
Weston	1	1						1	

Percents by Department *

County	Total Offenses	Misde-meanor	Felony	Domestic Violence	Resist Arrest	Assault	Public Intox	Alcohol Involved	Drugs Involved
Statewide	88	75.00%	22.73%	1.14%	1.14%	5.68%	0.00%	25.00%	27.27%
Albany	11	72.73%	18.18%	0.00%	9.09%	18.18%	0.00%	36.36%	36.36%
Big Horn									
Campbell	6	100.00%	0.00%	0.00%	0.00%	0.00%	0.00%	16.67%	16.67%
Carbon	5	60.00%	40.00%	0.00%	0.00%	20.00%	0.00%	20.00%	40.00%
Converse	2	100.00%	0.00%	0.00%	0.00%	0.00%	0.00%	50.00%	50.00%
Crook	3	100.00%	0.00%	0.00%	0.00%	0.00%	0.00%	0.00%	0.00%
Fremont	18	83.33%	11.11%	0.00%	0.00%	5.56%	0.00%	33.33%	27.78%
Goshen									
Hot Springs									
Johnson	1	100.00%	0.00%	0.00%	0.00%	0.00%	0.00%	100.00%	0.00%
Laramie	1	0.00%	0.00%	0.00%	0.00%	0.00%	0.00%	0.00%	0.00%
Lincoln									
Natrona	1	0.00%	100.00%	0.00%	0.00%	0.00%	0.00%	0.00%	0.00%
Niobrara									
Park	9	55.56%	22.22%	0.00%	0.00%	0.00%	0.00%	0.00%	33.33%
Platte	2	100.00%	50.00%	0.00%	0.00%	0.00%	0.00%	50.00%	0.00%
Sheridan									
Sublette									
Sweetwater	27	70.37%	37.04%	3.70%	0.00%	3.70%	0.00%	18.52%	29.63%
Teton	1	100.00%	0.00%	0.00%	0.00%	0.00%	0.00%	100.00%	0.00%
Uinta									
VOA Detox Center									
Washakie									
Weston	1	100.00%	0.00%	0.00%	0.00%	0.00%	0.00%	100.00%	0.00%

* Total percents may not equal 100 due to lack of information, or a single arrest involving multiple crimes.

Statewide Juvenile Arrests - Demographics
January 1, 2015 - December 31, 2015

Numbers by Department

County	Total Offenses	Misdemeanor	Felony	Residency			Female	Male	Unknown Gender	Average Age
				In County	In-State Visitor	Out of State				
Statewide	88	66	20	68	10	7	17	66	5	16.03
Albany	11	8	2	9			2	8	1	16.27
Big Horn										
Campbell	6	6		6			2	4		16.17
Carbon	5	3	2	4		1	1	4		15.20
Converse	2	2		1	2			2		17.00
Crook	3	3			2		1	2		17.00
Fremont	18	15	2	18			5	10	3	15.78
Goshen										
Hot Springs										
Johnson	1	1			1			1		17.00
Laramie	1			1			1			12.00
Lincoln										
Natrona	1		1	1				1		17.00
Niobrara										
Park	9	5	2	8	1		1	8		16.22
Platte	2	2	1	2				2		17.00
Sheridan										
Sublette										
Sweetwater	27	19	10	17	4	5	4	22	1	15.96
Teton	1	1				1		1		16.00
Uinta										
VOA Detox Center										
Washakie										
Weston	1	1		1				1		17.00

Percents by Department *

County	Total Offenses	Misdemeanor	Felony	Residency			Female	Male	Unkown Gender
				In County	In-State Visitor	Out of State			
Statewide	88	75.00%	22.73%	77.27%	11.36%	7.95%	19.32%	75.00%	5.68%
Albany	11	72.73%	18.18%	81.82%	0.00%	0.00%	18.18%	72.73%	9.09%
Big Horn									
Campbell	6	100.00%	0.00%	100.00%	0.00%	0.00%	33.33%	66.67%	0.00%
Carbon	5	60.00%	40.00%	80.00%	0.00%	20.00%	20.00%	80.00%	0.00%
Converse	2	100.00%	0.00%	50.00%	100.00%	0.00%	0.00%	100.00%	0.00%
Crook	3	100.00%	0.00%	0.00%	66.67%	0.00%	33.33%	66.67%	0.00%
Fremont	18	83.33%	11.11%	100.00%	0.00%	0.00%	27.78%	55.56%	16.67%
Goshen									
Hot Springs									
Johnson	1	100.00%	0.00%	0.00%	100.00%	0.00%	0.00%	100.00%	0.00%
Laramie	1	0.00%	0.00%	100.00%	0.00%	0.00%	100.00%	0.00%	0.00%
Lincoln									
Natrona	1	0.00%	100.00%	100.00%	0.00%	0.00%	0.00%	100.00%	0.00%
Niobrara									
Park	9	55.56%	22.22%	88.89%	11.11%	0.00%	11.11%	88.89%	0.00%
Platte	2	100.00%	50.00%	100.00%	0.00%	0.00%	0.00%	100.00%	0.00%
Sheridan									
Sublette									
Sweetwater	27	70.37%	37.04%	62.96%	14.81%	18.52%	14.81%	81.48%	3.70%
Teton	1	100.00%	0.00%	0.00%	0.00%	100.00%	0.00%	100.00%	0.00%
Uinta									
VOA Detox Center									
Washakie									
Weston	1	100.00%	0.00%	100.00%	0.00%	0.00%	0.00%	100.00%	0.00%

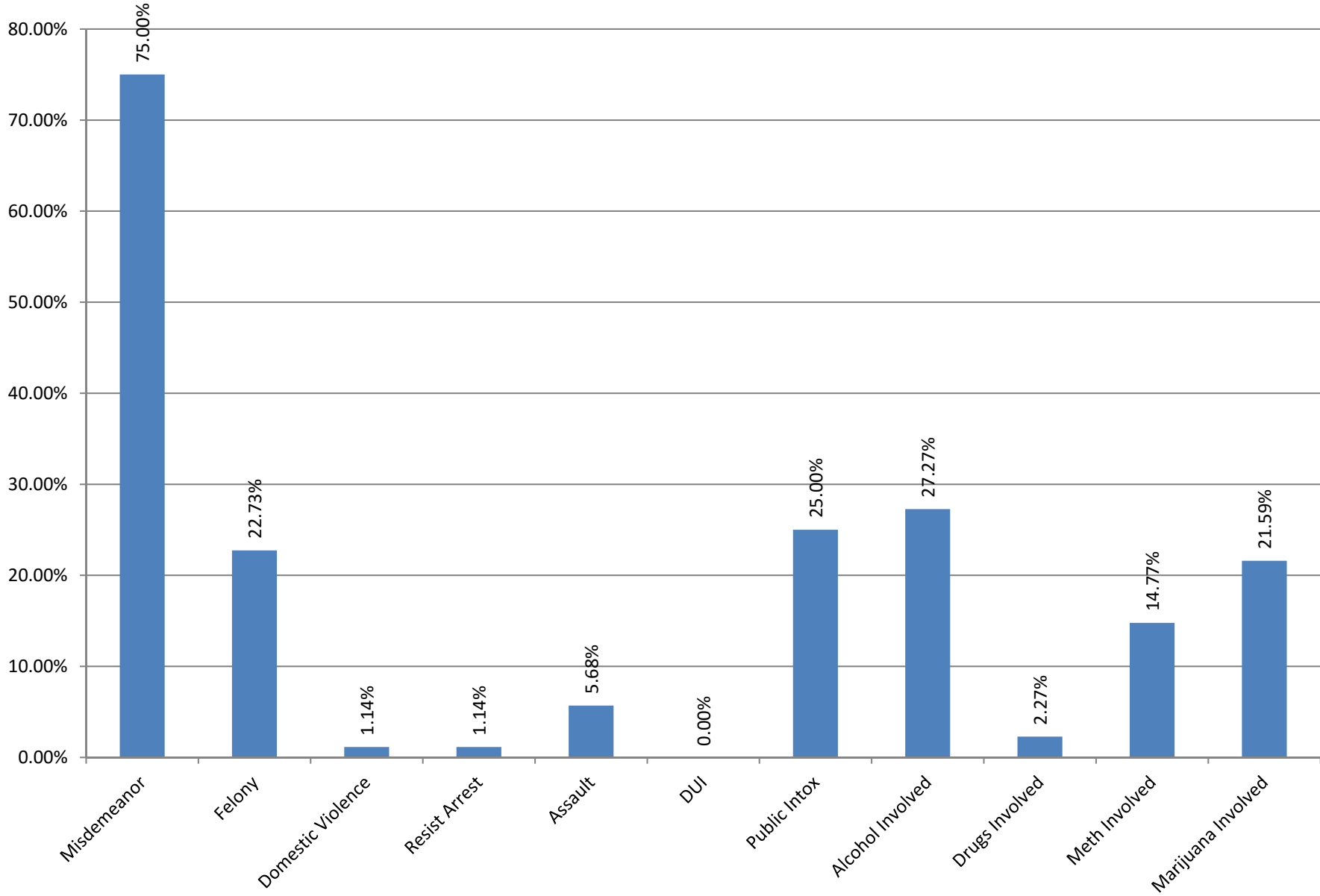
* Total percents may not equal 100 due to lack of information, or a single arrest involving multiple crimes.

Statewide Juvenile Arrests
January 1, 2015 - December 31, 2015

Meth, Drugs & Public Intoxication

County Department	Total Offenses	Meth Involved	% Meth of Total	Marijuana Involved	% Marij. of Total	Drugs Involved	% Drugs of Total	Public Intox.	% PI of Total	Pub. Intox. Ave. BAC
Statewide	88	2	2.27%	19	21.59%	24	27.27%	0	0.00%	
Albany	11			3	27.27%	4	36.36%			
Big Horn										
Campbell	6			1	16.67%	1	16.67%			
Carbon	5	1	20.00%	2	40.00%	2	40.00%			
Converse	2			1	50.00%	1	50.00%			
Crook	3									
Fremont	18	1	5.56%	2	11.11%	5	27.78%			
Goshen										
Hot Springs										
Johnson	1									
Laramie	1			1	100.00%					
Lincoln										
Natrona	1									
Niobrara										
Park	9			1	11.11%	3	33.33%			
Platte	2									
Sheridan										
Sublette										
Sweetwater	27			8	29.63%	8	29.63%			
Teton	1									
Uinta										
VOA Detox Ctr.										
Washakie										
Weston	1									

Crimes as a Percent of all Juvenile Arrests



Juvenile arrests involve persons age 17 and below

Statewide Juvenile Arrests
January 1, 2015 - December 31, 2015

Juvenile DUI Arrests

County Department	Total Offenses	Juvenile DUI Offenses	% DUI Of Total	Ave. BAC	Drugs Involved	% DUI Drugs Inv.
Statewide	88	13	14.77%	0.126	4	4.55%
Albany	11	2	18.18%		2	18.18%
Big Horn						
Campbell	6	1	16.67%	0.160		
Carbon	5	1	20.00%	0.040		
Converse	2	2	100.00%		1	50.00%
Crook	3					
Fremont	18	1	5.56%	0.161		
Goshen						
Hot Springs						
Johnson	1	1	100.00%	0.160		
Laramie	1					
Lincoln						
Natrona	1					
Niobrara						
Park	9	1	11.11%		1	11.11%
Platte	2					
Sheridan						
Sublette						
Sweetwater	27	2	7.41%	0.118		
Teton	1	1	100.00%			
Uinta						
VOA Detox Ctr.						
Washakie						
Weston	1	1	100.00%			

Juvenile Traffic Crashes

County Department	Traffic Crashes	Alcohol Involved	% Alcohol Involved	Average BAC	Drugs Involved
Statewide	1	1	100.00%	0.160	0
Albany					
Big Horn					
Campbell					
Carbon					
Converse					
Crook					
Fremont					
Goshen					
Hot Springs					
Johnson	1	1	100.00%	0.160	
Laramie					
Lincoln					
Natrona					
Niobrara					
Park				0.193	
Platte					
Sheridan					
Sublette				0.040	
Sweetwater					
Teton					
Uinta					
VOA Detox Ctr.					
Washakie					
Weston					

Underage DUI Arrests

County Department	DUI Offenses	Underage Offenses	% DUI Of Total	Ave. BAC	Drugs Involved	% DUI Drugs Inv.
Statewide	3,457	190	5.50%	0.1238	58	30.53%
Albany	304	31	10.20%	0.1362	11	35.48%
Big Horn	37					
Campbell	539	25	4.64%	0.1181	6	24.00%
Carbon	195	17	8.72%	0.1031	8	47.06%
Converse	150	9	6.00%	0.1105	4	44.44%
Crook	62	2	3.23%	0.1000		
Fremont	237	16	6.75%	0.1253	3	18.75%
Goshen	55	2	3.64%	0.0755		
Hot Springs	19	2	10.53%	0.2100	1	50.00%
Johnson	43	1	2.33%	0.1600		
Laramie	446	28	6.28%	0.1015	9	32.14%
Lincoln	106	1	0.94%	0.1050		
Natrona	464	18	3.88%	0.1411	4	22.22%
Niobrara	11					
Park	90	4	4.44%	0.1565	2	50.00%
Platte	78	5	6.41%	0.1290	3	60.00%
Sheridan	263	7	2.66%	0.1087		
Sublette	48	2	4.17%	0.1615	1	50.00%
Sweetwater	3	13	433.33%	0.1260	4	30.77%
Teton	146	4	2.74%			
Uinta	73			0.1100		
VOA Detox Ctr.	1					
Washakie	33	2	6.06%		2	100.00%
Weston	54	1	1.85%			

MIP Arrests

County Department	Total Offenses	MIP Arrests	% MIP to Total	Ave. MIP BAC
Statewide	15,996	294	1.84%	0.1274
Albany	873	69	7.90%	0.1128
Big Horn	95	2	2.11%	0.0810
Campbell	1,232	10	0.81%	0.1330
Carbon	564	3	0.53%	0.0820
Converse	572	10	1.75%	0.1435
Crook	184	3	1.63%	0.1600
Fremont	1,353	23	1.70%	0.1565
Goshen	152			
Hot Springs	88	2	2.27%	0.2385
Johnson	197	2	1.02%	0.2100
Laramie	2,195	2	0.09%	
Lincoln	234	6	2.56%	0.0758
Natrona	2,812	18	0.64%	0.1351
Niobrara	41	1	2.44%	0.0790
Park	415	6	1.45%	0.1340
Platte	254	3	1.18%	0.2270
Sheridan	665	14	2.11%	0.1240
Sublette	102	4	3.92%	0.1530
Sweetwater	1,392	92	6.61%	0.1167
Teton	294	8	2.72%	0.1022
Uinta	237	7	2.95%	0.0360
VOA Detox Ctr.	1,695	4	0.24%	0.1743
Washakie	197	2	1.02%	0.3400
Weston	153	3	1.96%	0.1120

Statewide Juvenile Arrests
January 1, 2015 - December 31, 2015

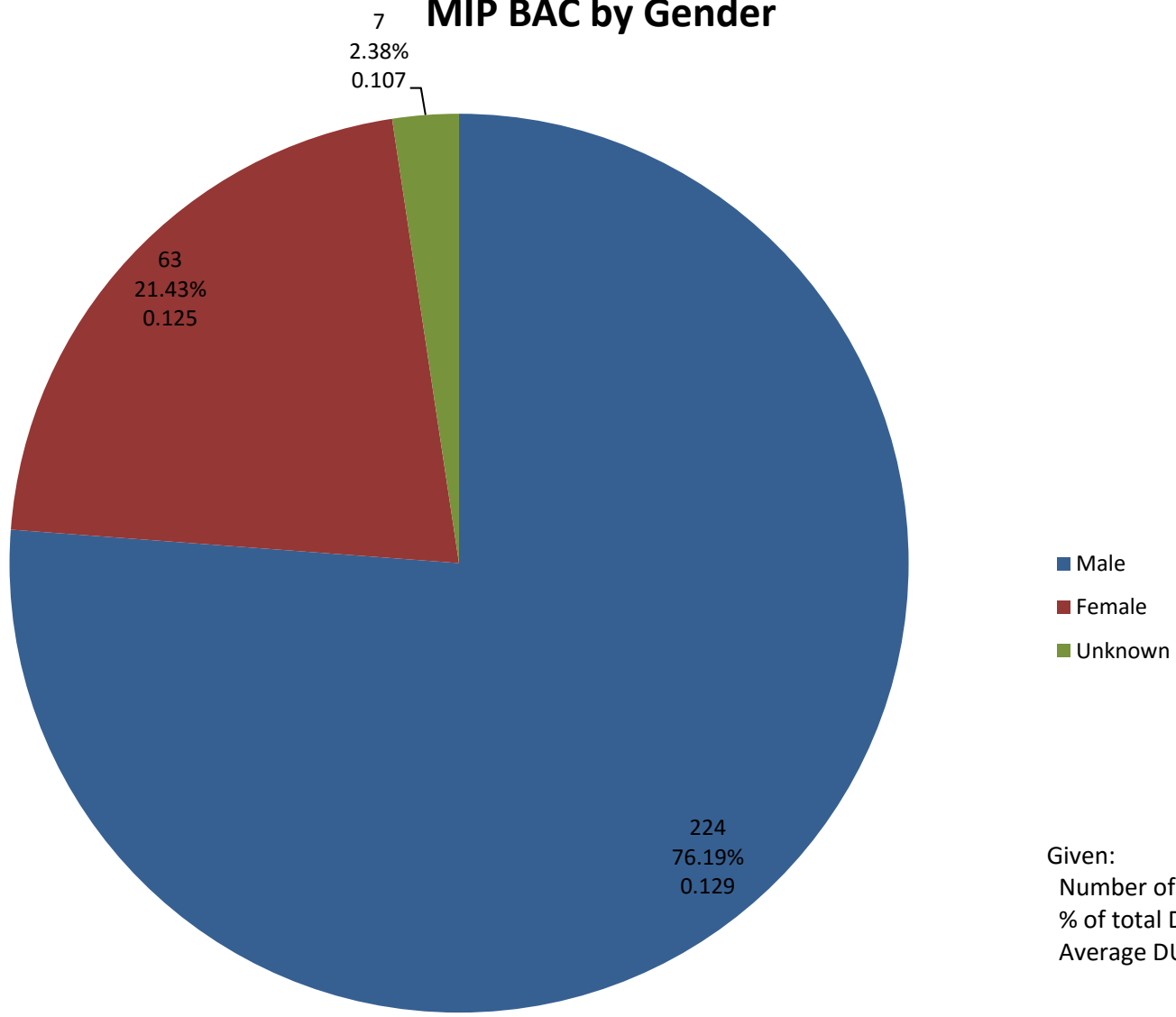
Juvenile DUI Arrests

County Department	Total Offenses	Underage DUI Offenses	% DUI Of Total	Ave. BAC	Drugs Involved	% DUI Drugs Inv.
Statewide	88	13	14.77%	0.126	4	4.55%
Albany	11	2	18.18%		2	18.18%
Big Horn						
Campbell	6	1	16.67%	0.160		
Carbon	5	1	20.00%	0.040		
Converse	2	2	100.00%		1	50.00%
Crook	3					
Fremont	18	1	5.56%	0.161		
Goshen						
Hot Springs						
Johnson	1	1	100.00%	0.160		
Laramie	1					
Lincoln						
Natrona	1					
Niobrara						
Park	9	1	11.11%		1	11.11%
Platte	2					
Sheridan						
Sublette						
Sweetwater	27	2	7.41%	0.118		
Teton	1	1	100.00%			
Uinta						
VOA Detox Ctr.						
Washakie						
Weston	1	1	100.00%			

Juvenile Traffic Crashes

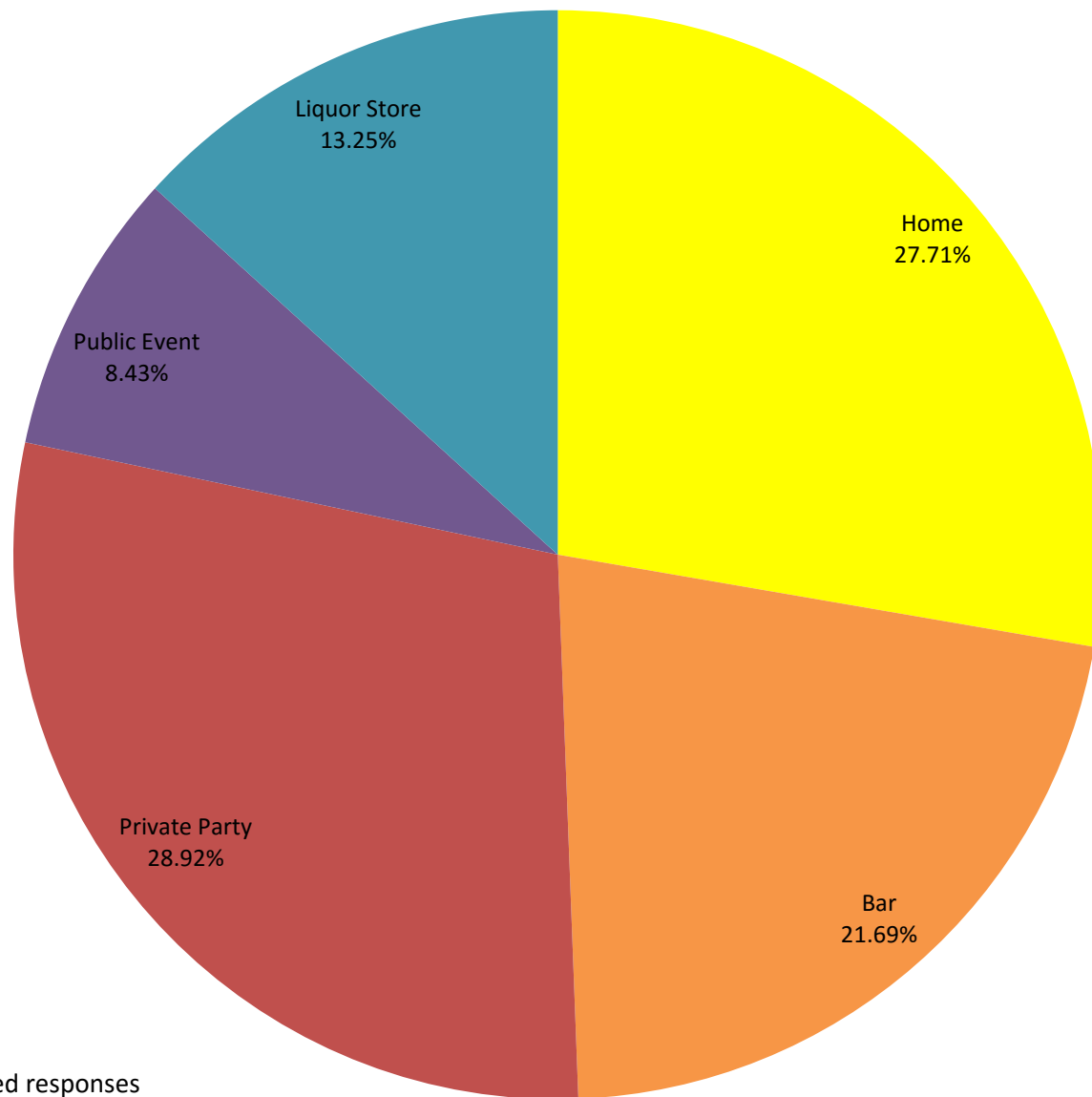
County Department	Traffic Crashes	Alcohol Involved	% Alcohol Involved	Average BAC	Drugs Involved
Statewide	1	1	100.00%	0.160	0
Albany					
Big Horn					
Campbell					
Carbon					
Converse					
Crook					
Fremont					
Goshen					
Hot Springs					
Johnson	1	1	100.00%	0.160	
Laramie					
Lincoln					
Natrona					
Niobrara					
Park				0.193	
Platte					
Sheridan					
Sublette				0.040	
Sweetwater					
Teton					
Uinta					
VOA Detox Ctr.					
Washakie					
Weston					

MIP BAC by Gender



Given:
Number of Arrests
% of total DUIs
Average DUI BAC

Where Minors Obtained Alcohol



Based on 166 reported responses

Reporting Percentage

	Jan	Feb	Mar	Apr	May	Jun	Jul	Aug	Sep	Oct	Nov	Dec	Yr. Ave.
Albany	100.0%	95.7%	100.0%	95.1%	93.3%	57.8%	97.9%	100.0%	103.6%	93.5%	100.0%	97.0%	95.4%
Big Horn	100.0%	100.0%	100.0%	100.0%	100.0%	100.0%	100.0%	100.0%	100.0%	100.0%	100.0%	100.0%	100.0%
Campbell	64.3%	71.1%	68.2%	69.5%	78.7%	58.5%	72.9%	67.1%	52.5%	63.9%	73.2%	63.0%	66.8%
Carbon	100.0%	100.0%	97.8%	100.0%	100.0%	98.0%	100.0%	100.0%	100.0%	100.0%	91.7%	100.0%	99.8%
Converse	100.0%	100.0%	102.3%	100.0%	100.0%	87.0%	100.0%	100.0%	100.0%	100.0%	95.8%	95.6%	99.1%
Crook	100.0%	100.0%	81.8%	100.0%	100.0%	100.0%	100.0%	100.0%	100.0%	100.0%	100.0%	100.0%	100.0%
Fremont	54.5%	49.0%	35.2%	51.4%	52.2%	55.6%	52.1%	55.3%	56.7%	61.9%	44.3%	36.9%	50.9%
Goshen	73.3%	100.0%	100.0%	100.0%	96.4%	100.0%	100.0%	100.0%	100.0%	100.0%	100.0%	60.0%	99.3%
Hot Springs	100.0%	100.0%	100.0%	100.0%	100.0%	100.0%	100.0%	100.0%	100.0%	100.0%	60.0%	50.0%	100.0%
Johnson	100.0%	100.0%	100.0%	100.0%	100.0%	100.0%	100.0%	100.0%	93.3%	78.6%	85.7%	100.0%	100.0%
Laramie	100.0%	100.0%	100.0%	100.0%	100.0%	87.5%	89.0%	100.0%	91.8%	100.0%	100.0%	98.3%	100.0%
Lincoln	80.0%	100.0%	100.0%	100.0%	96.0%	95.8%	100.0%	100.0%	100.0%	100.0%	100.0%	76.5%	96.7%
Natrona	100.0%	71.1%	100.0%	100.0%	100.0%	100.0%	100.0%	68.2%	100.0%	100.0%	89.7%	82.1%	100.0%
Niobrara	100.0%	100.0%	125.0%	100.0%	100.0%	100.0%	100.0%	100.0%	100.0%	100.0%	100.0%	100.0%	100.0%
Park	100.0%	100.0%	100.0%	100.0%	83.3%	100.0%	81.0%	100.0%	96.8%	72.4%	100.0%	100.0%	93.6%
Platte	81.3%	57.9%	83.3%	70.8%	71.4%	84.0%	94.4%	100.0%	92.6%	100.0%	100.0%	96.8%	87.9%
Sheridan	100.0%	100.0%	100.0%	100.0%	100.0%	95.8%	100.0%	100.0%	100.0%	100.0%	100.0%	98.5%	100.0%
Sublette	100.0%	100.0%	84.6%	100.0%	9.1%	100.0%	100.0%	100.0%	100.0%	100.0%	100.0%	100.0%	97.1%
Sweetwater	100.0%	100.0%	99.2%	100.0%	100.0%	99.2%	100.0%	100.0%	100.0%	99.2%	100.0%	99.0%	99.8%
Teton	35.1%	41.4%			32.6%	27.5%	37.6%	43.0%	35.4%	27.7%	14.3%	26.9%	38.5%
Uinta	37.2%	45.7%	81.1%	38.6%	14.7%	41.7%	38.4%	47.5%	48.1%	13.2%	38.6%	18.9%	39.1%
Washakie	7.7%	20.8%	37.8%	64.3%	80.0%	46.7%	67.6%	100.0%	100.0%	100.0%	100.0%	100.0%	76.1%
Weston	100.0%	68.2%	100.0%	60.0%	100.0%	60.0%	59.3%	48.0%	33.3%	76.9%	64.7%	0.0%	64.8%

Statewide average: 83.2%

Natrona County Arrests
January 1, 2015 - December 31, 2015

Numbers by Department

County	Total Offenses	Misdemeanor	Felony	Domestic Violence	Resist Arrest	Assault	Public Intox	Alcohol Involved	Drugs Involved	Residency			Female	Male	Unknown Gender	Average Age
										In County	Other WY	Out of State				
Natrona County	2812	2171	294	145	43	63	434	1240	348	2336	137	171	683	2038	91	34.45
Casper PD	2150	1676	218	117	32	49	393	911	262	1790	102	122	536	1565	49	34.39
Evansville PD	42	29	1	3	1		9	26	3	28	1	6	14	28	0	32.92
Midwest PD	8	6	1					1		5	2	1	3	5	0	43.13
Mills PD	253	179	23	12	1	5	10	113	32	226	6	8	50	173	30	34.89
Natrona SO	224	184	27	11	9	7	15	120	16	187	16	16	47	170	7	34.34
Other	62	38	16	2		1	6	21	19	52	2	3	20	38	4	33.25
WHP	73	59	8			1	1	48	16	48	8	15	13	59	1	35.49

Percents by Department *

County	Total Offenses	Misdemeanor	Felony	Domestic Violence	Resist Arrest	Assault	Public Intox	Alcohol Involved	Drugs Involved	Residency			Female	Male	Unkown Gender
										In County	Other WY	Out of State			
Natrona County	2950	77.20%	10.46%	5.16%	1.53%	2.24%	15.43%	44.10%	12.38%	83.07%	4.87%	6.08%	24.29%	72.48%	3.24%
Casper PD	2091	77.95%	10.14%	5.44%	1.49%	2.28%	18.28%	42.37%	12.19%	83.26%	4.74%	5.67%	24.93%	72.79%	2.28%
Evansville PD	68	69.05%	2.38%	7.14%	2.38%	0.00%	21.43%	61.90%	7.14%	66.67%	2.38%	14.29%	33.33%	66.67%	0.00%
Midwest PD	4	75.00%	12.50%	0.00%	0.00%	0.00%	0.00%	12.50%	0.00%	62.50%	25.00%	12.50%	37.50%	62.50%	0.00%
Mills PD	225	70.75%	9.09%	4.74%	0.40%	1.98%	3.95%	44.66%	12.65%	89.33%	2.37%	3.16%	19.76%	68.38%	11.86%
Natrona SO	383	82.14%	12.05%	4.91%	4.02%	3.13%	6.70%	53.57%	7.14%	83.48%	7.14%	7.14%	20.98%	75.89%	3.13%
Other	60	61.29%	25.81%	3.23%	0.00%	1.61%	9.68%	33.87%	30.65%	83.87%	3.23%	4.84%	32.26%	61.29%	6.45%
WHP	119	80.82%	10.96%	0.00%	0.00%	1.37%	1.37%	65.75%	21.92%	65.75%	10.96%	20.55%	17.81%	80.82%	1.37%

* Total percents may not equal 100 due to lack of information, or a single arrest involving multiple crimes.

MIP Arrests

County Department	DUI Offenses	MIP Arrests	% MIP to DUI	Average MIP BAC
Natrona County	464	18	3.88%	0.135
Casper PD	247	11	4.45%	0.172
Evansville PD	10			
Midwest PD	10			
Mills PD	69	3	4.35%	0.050
Natrona SO	78	3	3.85%	0.110
Other	12	1	8.33%	
WHP	47			

Meth, Drugs & Public Intoxication

County Department	Total Offenses	Meth Involved	Marijuana Involved	Drugs Involved	Public Intox.	Pub. Intox. Ave. BAC
Natrona County	2812	178	203	348	434	0.224
Casper PD	2150	131	160	262	393	0.228
Evansville PD	42	2	1	3	9	0.191
Midwest PD	8					
Mills PD	253	21	15	32	10	0.146
Natrona SO	224	6	11	16	15	0.246
Other	62	15	8	19	6	0.121
WHP	73	3	8	16	1	0.096

DUI Arrests

County Department	Total Offenses	DUI Offenses	% DUI Of Total	Ave. BAC	DUI Involving Drugs	% DUI Involving Drugs
Natrona County	2812	464	16.50%	0.174	63	13.58%
Casper PD	2150	247	11.49%	0.142	37	14.98%
Evansville PD	42	10	23.81%	0.192		
Midwest PD	8	1				
Mills PD	253	69	27.27%	0.189	8	11.59%
Natrona SO	224	78	34.82%	0.170	7	8.97%
Other	62	12	19.35%	0.134	2	16.67%
WHP	73	47	64.38%	0.188	9	19.15%

Traffic Crashes

County Department	Traffic Crashes	Alcohol Involved	% Alcohol Involved	Average BAC	Drugs Involved	% Drugs Involved
Natrona County	122	100	81.97%	0.172	15	12.30%
Casper PD	84	65	77.38%	0.161	14	16.67%
Evansville PD	5	5	100.00%	0.190		
Midwest PD						
Mills PD	11	10	90.91%	0.202	1	9.09%
Natrona SO	13	13	100.00%	0.180		
Other	1	1	100.00%			
WHP	8	6	75.00%	0.244		

Underage DUI Arrests

County Department	DUI Offenses	Underage Offenses	% DUI Of Total	Ave. BAC	Drugs Involved	% DUI Drugs Inv.
Natrona County	464	18	3.88%	0.141	4	22.22%
Casper PD	247	10	4.05%	0.130	2	20.00%
Evansville PD	10					
Midwest PD	10					
Mills PD	69	2	2.90%		1	50.00%
Natrona SO	78	5	6.41%	0.155	1	20.00%
Other	12	1	8.33%	0.178		
WHP	47					

Alcohol and Drug Involvement

Total Offenses

County Department	Total Offenses	Number Involving Alcohol	Percent Involving Alcohol	Number Involving Drugs	Percent Involving Drugs
Natrona County	2812	1240	44.10%	348	12.38%
Casper PD	2150	911	42.37%	262	12.19%
Evansville PD	42	26	61.90%	3	7.14%
Midwest PD	8	1			
Mills PD	253	113	44.66%	32	12.65%
Natrona SO	224	120	53.57%	16	7.14%
Other	62	21	33.87%	19	30.65%
WHP	73	48	65.75%	16	21.92%

Domestic Violence

County Department	Domestic Violence Offenses	Number Involving Alcohol	Percent Involving Alcohol	Number Involving Drugs	Percent Involving Drugs
Natrona County	145	83	57.24%	3	2.07%
Casper PD	117	65	55.56%	3	2.56%
Evansville PD	3	3	100.00%		
Midwest PD					
Mills PD	12	7	58.33%		
Natrona SO	11	7	63.64%		
Other	2	1	50.00%		
WHP					

Felony Offenses

County Department	Felony Offenses	Number Involving Alcohol	Percent Involving Alcohol	Number Involving Drugs	Percent Involving Drugs
Natrona County	294	49	16.67%	82	27.89%
Casper PD	218	38	17.43%	56	25.69%
Evansville PD	1			1	
Midwest PD	1				
Mills PD	23	5	21.74%	7	30.43%
Natrona SO	27	4	14.81%	3	11.11%
Other	16			10	62.50%
WHP	8	2	25.00%	5	62.50%

Resisting Arrest

County Department	Resisting Arrest Offenses	Number Involving Alcohol	Percent Involving Alcohol	Number Involving Drugs	Percent Involving Drugs
Natrona County	43	24	55.81%	6	13.95%
Casper PD	32	16	50.00%	5	15.63%
Evansville PD	1	1	100.00%		
Midwest PD					
Mills PD	1	1	100.00%		
Natrona SO	9	6	66.67%	1	11.11%
Other					
WHP					

Misdemeanor Offenses

County Department	Misdemeanor Offenses	Number Involving Alcohol	Percent Involving Alcohol	Number Involving Drugs	Percent Involving Drugs
Natrona County	2171	1050	48.36%	229	10.55%
Casper PD	1676	767	45.76%	174	10.38%
Evansville PD	29	20	68.97%	2	6.90%
Midwest PD	6	1	1		
Mills PD	179	94	52.51%	22	12.29%
Natrona SO	184	107	58.15%	13	7.07%
Other	38	19	50.00%	9	23.68%
WHP	59	42	71.19%	9	15.25%

Assault

County Department	Assault Offenses	Number Involving Alcohol	Percent Involving Alcohol	Number Involving Drugs	Percent Involving Drugs
Natrona County	63	27	42.86%	7	11.11%
Casper PD	49	22	44.90%	5	10.20%
Evansville PD					
Midwest PD					
Mills PD	5	3	60.00%	1	20.00%
Natrona SO	7	1	14.29%	1	14.29%
Other	1	1	100.00%		
WHP	1				

Location of Alcohol Consumption and Point of Sale by Department

Department	Location of Consumption								Point of Sale						
	Alcohol Involved	Home	Bar	Private Party	Public Event	Car	Other	No Response	Home	Bar	Drive Up	Private Party	Public Event	Liquor Store	No Response
Casper PD	911	164	140	29	15	23	55	104	96	98	2	18	7	59	132
Evansville PD	26	7	7	1		1		6	2	5		1			9
Midwest PD	1							2							2
Mills PD	113	32	47	5	1	5	5	26	13	47		4	2	5	39
Natrona SO	120	21	41	3	1	8	9	9	12	35	2	2		6	16
Other	21	2	3	1			6	5		3		1		3	5
WHP	48	2	15		1	7	6	5	1	10				6	7
Natrona County Totals	1240	228	253	39	18	44	83	158	124	198	3	26	9	79	210

Department	Bar Name	No. of Reports
Casper PD	Alibi	13
	Backdoor Lounge	4
	Baja	1
	Beacon	4
	Butch's	11
	Chatters	1
	CY Liquors	2
	Eagles	2
	Famous Dave's	1
	Fireside	4
	Frosty's	4
	Galloways	7
	Keg & Cork	5
	Moonlight	36
	Olive Garden	1
	Oregon Trail	2
	Parkway Plaza	2
	Poplar Wine	2
	Racks	4
	Sandbar	14
	Sanford's	1

Dept.	Bar Name	No. of Reports
Casper	Sidelines	1
PD	Taylor's	1
	TJ's	2
	VFW	3
Evansville	Butch's	2
PD	Keg and Cork	1
	Taylor's	2
Mills PD	Backdoor	1
	Baja	4
	Beacon	15
	Cowboys	1
	Fireside	1
	Hideaway	2
	Keg and Cork	1
	Oregon Trail	1
	Racks	8
	Sandbar	1
	Sanford's	1

Dept.	Bar Name	No. of Reports
Natrona	Alibi	1
SO	Beacon	6
	Black & Gold	1
	Butch's	1
	Cowboys	1
	Dsasumo's	1
	Fireside	1
	Galloways	1
	Horseshoe H	4
	Keg & Cork	1
	Poor Boys	1
	Racks	7
	Sandbar	1
	Silver Fox	1
	Wonder Bar	1
Other	Racks	1
	Wonder Bar	1
WHP	Alibi	2
	Beacon	4
	Horseshoe	3
	La Cocina	1
	Racks	1

* Total of percents in Location of Consumption and Point of Sale categories may exceed 100% due to single arrests involving more than one location or point of sale.

No public events named in alcohol collection reports.

ACKNOWLEDGEMENTS

This project was accomplished due to the committed support of all the law enforcement administrators in Wyoming, and in particular, the Sheriffs' generous commitment of agency resources. The day-to-day supervision and weekly submittal of the project reporting forms and the individual efforts of the hundreds of arresting/detention officers who filled out the reporting forms should be acknowledged as well. Their collective efforts were absolutely essential to the overall success of this project.

Albany

Dave O'Malley – Sheriff
Ben Fritzen

Big Horn

Ken Blackburn – Sheriff
Debbie Cook
Deb Rathbun

Campbell

Bill Pownall – Sheriff
Tom O'Neal

Carbon

Jerry Colson – Sheriff
Becky George

Converse

Clint Becker – Sheriff
Jan Dillon

Crook

Jeff Hodge – Sheriff
Peggy Boardman

Fremont

Skip Hornecker – Sheriff
Kathy Mosbrucker
Ron Blumenshine
Center of Hope - VOA
Shelley Mbonu – Director
Barb Beede

Goshen

Don Murphy – Sheriff
Brenda Sishc

Hot Springs

Lou Falgoust – Sheriff
Dan Pebbles

Johnson

Steve Kozisek – Sheriff
Kevin Filbert

Laramie

Danny Glick – Sheriff
Michael Sorenson
Robert Perkins

Lincoln

Shane Johnson – Sheriff
Doug Roberts

Natrona

Gus Holbrook – Sheriff
John Becker

Tammy Britton

Niobrara

Rick Zerbe – Sheriff
Nona Howard

Gayle Santistevan

Park

Scott Steward – Sheriff
Steve Oliver

Platte

Clyde Harris – Sheriff
Cassidy Britain

Sheridan

Dave Hofmeier – Sheriff
Jane Gale

Sublette

Dave Lankford – Sheriff
Ruby Mendive

Travis Bingham

Sweetwater

Mike Lowell – Sheriff
Shelli Roy

Yasmin Hamilton

Teton

Jim Whalen – Sheriff
Dylan Spence

Uinta

Doug Mathews – Sheriff
Sarah Jeffers

Washakie

Steve Rakness – Sheriff
Erich Berryman

Wanda Richards

Weston

Bryan Colvard - Sheriff
Dean Emmert

A special thanks to the Rock Springs, Sheridan and Gillette Police Departments and the Laramie, Sublette, and Fremont County Sheriff's Offices for the photos provided for this report. Cover photo – Fremont County Sheriff's Office.

Database Manager:

Erin Maggard - Johnson and Associates

Data Entry:

Christina Hill – Johnson and Associates

Association Liaison:

Lori Emmert – Johnson and Associates

Project Manager:

Ernest L. Johnson - Johnson and Associates

Highway Safety Grants Supervisor:

Ken Ledet – WYDOT

Highway Safety Grant Manager:

Stephanie Lucero - WYDOT

EVALUATION OF ALCOHOL FACTORS IN CUSTODIAL ARRESTS

Albany County Sheriff's Department

OFFICER or CR NUMBER _____ DATE _____

The following information is being collected in an effort to evaluate alcohol factors in custodial and DUI arrests in all twenty-three counties in Wyoming. This data will be used for statistical analysis purposes only. Please fill out a separate form for every person being booked into your facility. Please fill in the information based on your knowledge of the case, personal observations, and/or questioning of the person arrested. The person should be advised that no case sensitive information is being recorded and that this information is being collected for statistical purposes only. A copy of the final report will be provided to every participating agency. Thanks for your help.

DEPARTMENT (Circle agency affecting arrest; if agency is not listed please fill in "Other")

Albany Laramie UW PD WHP G&F Other: _____

GENDER (Circle one): Male Female **AGE:** _____

STATUS (Circle one): County Resident In-State Visitor Out-of-State Visitor

OFFENSE CHARGED (Circle all that apply): Misdemeanor Felony

TYPE of CRIME (Circle all that apply):

Domestic Violence Assault Resisting Arrest
Public Intoxication DUI MIP

IF ARRESTED FOR DUI: PREVIOUS DUI ARREST? (Circle one): Yes No

TRAFFIC CRASH INVOLVED (Circle one): Yes No

DRUGS INVOLVED (Circle one): Yes No

MARIJUANA INVOLVED (Circle one): Yes No

METH INVOLVED (Circle one): Yes No

ALCOHOL INVOLVED (Note if you detect the odor of alcohol or if you have knowledge that the person had been drinking prior to being arrested) (Circle one): **Yes** **No**

If yes (Fill in all that apply):

Intoximeter BAC: _____ Blood Test BAC: _____

UA BAC: _____ PBT BAC: _____

Refused all testing (Circle if applicable): Yes

LOCATION OF LAST CONSUMPTION (Circle all that apply):

Home Bar (Name: _____) Car PRIVATE Party/Event

PUBLIC Event (Name: _____)

Other: _____ Did not respond

POINT OF SALE OR WHERE ALCOHOL WAS OBTAINED (Circle all that apply):

Home Bar Drive-up Window Liquor Store PRIVATE Party/Event

PUBLIC Event (Name: _____)

Other: _____ Did not respond

WYOMING'S ALCOHOL IMPAIRMENT EDUCATIONAL GUIDE

MALES - APPROXIMATE ALCOHOL CONCENTRATION (AC) PERCENTAGE

Estimates based on physically fit adult males who consume the alcohol over a one hour period.

DRINKS	BODY WEIGHT IN POUNDS								Nov-06	
	100	120	140	160	180	200	220	240		
0	0.00	0.00	0.00	0.00	0.00	0.00	0.00	0.00	The Only Safe Driving Limit	
1	0.04	0.03	0.03	0.02	0.02	0.02	0.02	0.02	Impairment Begins	
2	0.08	0.06	0.05	0.05	0.04	0.04	0.03	0.03		
3	0.11	0.09	0.08	0.07	0.06	0.06	0.05	0.05	Driving Skills Significantly Affected	
4	0.15	0.12	0.11	0.09	0.08	0.08	0.07	0.06		
5	0.19	0.16	0.13	0.12	0.11	0.09	0.09	0.08	Legally Intoxicated Criminal Penalties	
6	0.23	0.19	0.16	0.14	0.13	0.11	0.10	0.09		
7	0.26	0.22	0.19	0.16	0.15	0.13	0.12	0.11		
8	0.30	0.25	0.21	0.19	0.17	0.15	0.14	0.13		
9	0.34	0.28	0.24	0.21	0.19	0.17	0.15	0.14		
10	0.37	0.31	0.27	0.23	0.21	0.19	0.17	0.16		
11	0.41	0.34	0.29	0.26	0.23	0.21	0.18	0.17		
12	0.45	0.37	0.32	0.28	0.25	0.23	0.20	0.19		
13	0.48	0.40	0.35	0.30	0.27	0.25	0.22	0.20		
14	0.52	0.44	0.37	0.33	0.30	0.26	0.24	0.22		
15	0.56	0.47	0.40	0.35	0.32	0.28	0.25	0.23		
16	0.60	0.50	0.43	0.37	0.34	0.30	0.27	0.25		
17	0.63	0.53	0.45	0.40	0.36	0.32	0.29	0.27		
18	0.67	0.56	0.48	0.42	0.38	0.34	0.30	0.28		
19	0.71	0.59	0.51	0.44	0.40	0.36	0.32	0.30		Possible Coma or Death from Respiratory Paralysis
20	0.74	0.62	0.53	0.49	0.42	0.38	0.33	0.31		
21	0.78	0.65	0.56	0.51	0.44	0.40	0.35	0.33		

DRIVING IMPAIRED
AC = .05% - .07%

Subtract .01% for each 40 minutes of drinking.
One drink is 1.25 ounces of 80 proof liquor,
12 ounces of beer, or 5 ounces of table wine.

LEGALLY INTOXICATED
AC = .08% AND UP

NOTE: PERSONS UNDER THE AGE OF 21 CAN FACE CRIMINAL PENALTIES IF CAUGHT DRIVING WITH A DETECTABLE ALCOHOL CONCENTRATION OF 0.02% OR MORE.

* Guide developed by J.Anderle, Laramie PD and Mike Moore, Wyoming Chemical Testing

WYOMING'S ALCOHOL IMPAIRMENT EDUCATIONAL GUIDE

FEMALES - APPROXIMATE ALCOHOL CONCENTRATION (AC) PERCENTAGE

Estimates based on physically fit adult females who consume the alcohol over a one hour period.

DRINKS	BODY WEIGHT IN POUNDS								Nov-06
	90	100	120	140	160	180	200	220	
0	0.00	0.00	0.00	0.00	0.00	0.00	0.00	0.00	The Only Safe Driving Limit
1	0.05	0.05	0.03	0.03	0.03	0.03	0.02	0.02	Impairment Begins
2	0.10	0.09	0.08	0.07	0.06	0.05	0.05	0.04	
3	0.15	0.14	0.11	0.10	0.09	0.08	0.07	0.06	Driving Skills Significantly Affected
4	0.20	0.18	0.15	0.13	0.11	0.10	0.09	0.08	
5	0.25	0.23	0.19	0.16	0.14	0.13	0.11	0.10	Legally Intoxicated Criminal Penalties
6	0.30	0.27	0.23	0.19	0.17	0.15	0.14	0.12	
7	0.35	0.32	0.27	0.23	0.20	0.18	0.16	0.14	
8	0.40	0.36	0.30	0.26	0.23	0.20	0.18	0.17	
9	0.45	0.41	0.34	0.29	0.26	0.23	0.20	0.19	
10	0.51	0.46	0.37	0.32	0.29	0.26	0.22	0.21	
11	0.56	0.50	0.42	0.36	0.32	0.28	0.25	0.23	
12	0.61	0.55	0.45	0.39	0.35	0.31	0.27	0.25	
13	0.66	0.59	0.49	0.42	0.37	0.33	0.29	0.27	
14	0.71	0.64	0.53	0.45	0.40	0.36	0.31	0.29	
15	0.76	0.68	0.57	0.48	0.43	0.38	0.34	0.31	
16	0.81	0.73	0.61	0.52	0.46	0.41	0.36	0.33	
17	0.86	0.77	0.64	0.55	0.49	0.43	0.38	0.36	
18	0.91	0.82	0.68	0.58	0.52	0.46	0.40	0.38	
19	0.96	0.87	0.71	0.61	0.55	0.49	0.42	0.40	Possible Coma or Death from Respiratory Paralysis
20	1.02	0.91	0.76	0.65	0.58	0.54	0.45	0.42	
21	1.07	0.96	0.79	0.69	0.61	0.56	0.47	0.44	

DRIVING IMPAIRED
AC = .05% - .07%

Subtract .01% for each 40 minutes of drinking.
One drink is 1.25 ounces of 80 proof liquor,
12 ounces of beer, or 5 ounces of table wine.

LEGALLY INTOXICATED
AC = .08% AND UP

NOTE: PERSONS UNDER THE AGE OF 21 CAN FACE CRIMINAL PENALTIES IF CAUGHT DRIVING WITH A DETECTABLE ALCOHOL CONCENTRATION OF 0.02% OR MORE.

* Guide developed by J.Anderle, Laramie PD and Mike Moore, Wyoming Chemical Testing

PROJECT MANAGER VITA

CONTACT INFORMATION:

Ernest L. Johnson, Director of Services
Johnson & Associates
1036 Durango
Douglas, WY 82633
Phone: (307) 351-8614
Fax: (307) 222-1922
E-mail: ejohnson@janda1.com

RELATED EDUCATION & EXPERIENCE:

- Twenty-four years of experience as an administrator of a state agency with direct responsibility for budget development and administration, planning, organizing, directing, staffing, and program services delivery.
- Masters degree in Public Administration; over thirty-five years of experience training and working with executives to achieve excellence in government, manage and implement change, increase organizational effectiveness and maximize program efficiency.
- Conducted in-depth management studies for criminal justice agencies for the states of Massachusetts and New Hampshire. These studies assessed the delivery of program services by agencies with statewide responsibilities and provided recommendations for increasing organizational efficiency and agency credibility.
- Over thirty-five years of experience in researching, writing, and administering a variety of federal and state grants. Grants involved in excess of several million dollars for a wide variety of purposes: personnel, equipment, training, research and providing services with targeted priorities.
- Extensive experience in researching, evaluating and implementing a wide variety of projects. These projects varied in scope and duration, and many required the involvement and partnership of multiple agencies and personnel throughout the state, as well as the enactment of state legislation.
 - Evaluation performed for the Substance Abuse Division - WDH – “Responsible Server Training Program” – October 2002
 - Managed the Wyoming First Lady’s Initiative to Reduce Underage Drinking – November 2004 to September 2006
 - Managed project and authored report: A Comprehensive Review of Alcohol State Statutes: Findings and Recommendations for Reducing Underage and Binge Drinking in Wyoming – 2008
 - Management Review of the Wyoming Seat Belt Coalition: Mission, Goals and Work Scope – September 2011
- Thirty years of experience in conducting a variety of feasibility studies
 - Conducted numerous feasibility studies for the Wyoming Legislature

Alcohol and Crime in Wyoming - 2015

- Most recent feasibility study conducted for the Town of Wright: “Should the Town of Wright create its own Police Department?” May 2004
- Conducted executive level training for the US Department of Justice/ State Department:
 - Instructed a 40-hour training course entitled “The Office of Professional Responsibility” for the Lithuania National Police command staff - 2001
 - Instructed an 80-hour training course entitled “Sex Crimes Investigations” for Investigators and Prosecutors in Lithuania - 2001
- Faculty - Criminal Justice Department - University of Wyoming (September 2000 to September 2012)
 - Criminal Justice Management, Concepts of Modern Policing, Ethics in the Administration of Justice, Criminal Justice Civil Liability, Politics and the Judicial Process, Criminal Courts and Processes, and Police Deviance.
- Management consultant for the Wyoming Association of Sheriffs and Chiefs of Police - Projects completed or currently in progress:
 - Evaluation of Alcohol Factors in Custodial Arrest in Wyoming – May 2005
 - Statewide Public Opinion Survey: Alcohol Issues and Policies (phone survey of 4,600 residents of Wyoming – Report released November 2006
 - Evaluation of Alcohol Factors in Custodial Arrests in Wyoming - 2006: Phase I (data collection), Phase II (Analysis, Findings and Strategies)
 - Evaluation of Alcohol Factors in Custodial Arrests in Wyoming – 2007, 2008, 2009
 - Alcohol and Crime in Wyoming: 2006 – 2008
 - Alcohol and Crime in Wyoming: 2010, 2011, 2012, 2013, 2014, 2015
 - Wyoming Youth and Alcohol Reports: 2010-2014
 - Project Manager for the Enforcing Underage Drinking Laws Program – September 2007 to May 2009
 - Project Manager for WY-CIA Wyoming Communities in Action – Phase I, Phase II – September 2007 to May 2009
 - Project Manager for Reducing Underage Drinking and Driving – October 2007 to September 2009
 - Project Coordinator for Project Safe Neighborhoods in Wyoming: A national initiative directed by the US Department of Justice aimed at reducing gun crimes and violence in this country. Initiative is currently in its sixth year of operation in Wyoming.
- Facilitator/Coordinator for the Wyoming Seat Belt Coalition – December 2006 to 2014
- Administration and coordination of WYDOT-Highway Safety’s Selective Traffic Enforcement Program Grants for Wyoming law enforcement agencies– December 2008 to present
- Facilitator for the Wyoming Safe Communities Project – FY 2012
- Facilitator/Coordinator for the Governor’s Council on Impaired Driving – December 2011 to present