



FIBERGLASS YACHTS

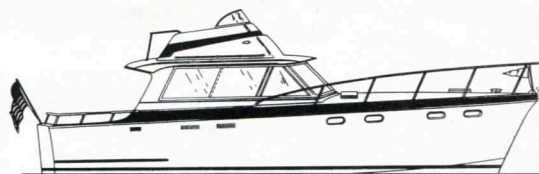
**STANDARD
SPECIFICATIONS
AND
PRICES**

- 41-FOOT CONVERTIBLE
- 41-FOOT DOUBLE CABIN
- 34-FOOT SEDAN
- 34-FOOT FLY BRIDGE SEDAN
- 34-FOOT SPORTS CRUISER
- 34-FOOT DOUBLE CABIN
- 34-FOOT FLY BRIDGE DOUBLE CABIN
- 34-FOOT DELUXE SPORT FISHERMAN

Prices and specifications are subject
to change without notice.

May 31, 1965

HATTERAS YACHT COMPANY, HIGH POINT, NORTH CAROLINA



PRICE LIST

41' CONVERTIBLE

Fly Bridge, Dual Control Stations, Enclosed Pilot House with Sliding Doors	
Twin 290 H.P. Engines	\$38,000.00
Twin GM 6V-53 Diesel Engines	46,660.00
Twin GM 8V-53 Diesel Engines	51,660.00
Truck Shipping Cradle (Full Credit Issued if returned to us, prepaid in good condition)	
Launch and Make-Ready, Our North Carolina Coastal Site. (plus freight)	175.00
Flybridge	450.00
No Fly Bridge	400.00
Heavy Duty Export Cradle	225.00

FACTORY INSTALLED OPTIONS

Deluxe Paint Trim	175.00
Air Conditioner with Reverse Cycle Heating	1,750.00
Cockpit Rails	235.00
Controls:	
Fly Bridge, Pilot House and Cock- pit Controls (Cockpit Controls have Tachometers and alarm system only)	850.00
Fly Bridge Controls ONLY: DEDUCT	500.00
No Fly Bridge; Controls in Pilot House ONLY: DEDUCT.	1,500.00
Electric Motor Conversion for Bow Toilet	105.00
Raw Water Strainers (Diesel Only)	200.00
Bar and Ice Maker	400.00
Live Bait Well	270.00
Bimini Top	200.00
Hour Meter Electric for Generator	28.00
Castro Hi-Lo Table	170.00
Rattan Chairs	75.00
Molded Lounge Chairs	80.00
HYCO Upper/Lower Lounge	300.00
HYCO Safety Center	200.00
Helmsman Chair for Lower Controls	100.00

AC GENERATING PLANT

Onan 2500 Watt, Gasoline	800.00
Onan 4000 Watt, Gasoline	1,300.00
Onan 3000 Watt, Diesel	1,500.00
Kohler 6500 Watt, Gasoline	1,650.00
Onan 6000 Watt, Diesel	2,400.00
Onan 7500 Watt, Gasoline	1,850.00
Generator Raw Water Strainers (Diesel Only)	30.00

MUFFLERS

6" Maxim Monel Silencers, Diesel (2)	700.00
4" Maxim Monel Silencers, Gas- oline (2)	344.00

HATTERAS 41' CONVERTIBLE

SPECIFICATIONS

L.O.A.	40'	9"
Beam	14'	
Draft	35"	
Freeboard Forward	6'	4"
Freeboard Aft	4'	1/2"
Headroom	6'	3"
Hull	One molded piece with water-tight compartments	
Deck and Superstructure	One Piece molded fiberglass	
Fly Bridge	One Piece molded fiberglass	
Headliners	Vinyl	
Chart Deck	Fiberglass	
Fuel Capacity	300	Gallons
Water Capacity	150	Gallons
Engine Compartment	Soundproof	
Hardware	Chrome on Brass	
Windows	Safety Glass	
Floor Covering	Vinyl	
Steering	Hydraulic Positive	

STANDARD EQUIPMENT

Alternator or generator on each engine • alternator (60 amp) additional plus 2 extra batteries for ship service system • batteries: heavy duty on each engine • bilge pumps: two electric, one hand, Navy type • blower • bonded throughout • compasses: Constellation 5", Pilot House, Corsair 4", fly bridge • sentron, 20 amp • controls, Morse • cutless bearings • dual trumpet horns, air-electric • master electric distribution panel complete with 110 volt and 12 volt circuit breakers, watt meter, volt meter, battery condition meter, and pilot lights • Ensign • fire extinguishers (3) • fog bell • fuel filters • fuel gauge, remote reading • hour meter, electric on tachometer • instruments, complete • life jackets (6) • lights: anchor, bow, navigation port and starboard, stern • lines, nylon anchor and tie-up • mufflers, fiberglass • pilot chair for fly bridge • polarity alarm • radio ground plates • sea valves on all under water fittings • molded self aligning shaft logs 1 1/2" • Tobin bronze shafts • struts, main and intermediate bronze V • automatic

fresh water system • underwater hull fittings • water gauge • hot water system • windshield wipers (two if pilot house controls).

Hardware: Anchor • anchor chocks • anchor bit with hawse pipe • boat hook • bow chocks • bow rail • bow staff and pennant • bow rails • safety rails • spring cleats • stern bits • stern staff • fly bridge ladder and safety rail.

INTERIOR

Bow Stateroom: Bunks, 2 vee polyurethane mattresses • cushion • duplex plug-in (2) 110 volt • floor, Tessera • hatch and screen • lavatory • light fixture (2) 12 volt • mirror, half • port lights and screens (4) • storage: drawers, lockers, hanging locker • toilet, hand • rope locker.

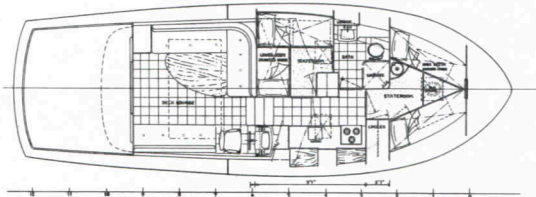
Head: Lavatory • duplex plug-in (1) 110 volt • flooring, vinyl • light fixture (1) 12 volt • paper holder • port light and screen • shower, with sump pump • storage: locker under lavatory, linen locker, medicine cabinet • toilet, electric • towel bar.

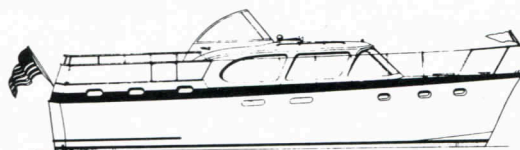
Galley: Duplex plug-in (2) 110 volt • flooring, vinyl • full electric panel 110 volt and 12 volt • light fixtures (3) 12 volt • port lights and screens (2) • refrigerator, 10 cu. ft. electric • sink, stainless steel • storage: cabinets, dish locker, drawers • stove, 3-burner electric with oven and rotisserie.

Master Stateroom: Bunks, (2) with polyurethane mattresses • cushions (2) polyurethane • curtains • duplex plug-in (1) 110 volt • flooring, vinyl • hatch and screens • light fixture (2) 12 volt • port lights and screens • storage: drawers under bunks, full length hanging locker.

Pilot House: Chest and drawers • duplex plug-in (3) 110 volt • drapes • flooring, Tessera • lights, dual bullet, 12 volt and 110 volt • lounge, curved sectional, converts to double bed • windows, sliding with screens • ventilating windshield.

(Some items optional)





HATTERAS 41' DOUBLE CABIN

PRICE LIST

41' DOUBLE CABIN

Twin 290 H.P. Engine	\$38,990.00
Twin GM 6V-53 Diesel Engine	47,490.00
Twin GM 8V-53 Diesel Engine	52,490.00
Launch and Make-Ready, Our North Carolina Coastal Site, (Plus Freight)	400.00
Truck Shipping Cradle	175.00
(Full Credit issued if returned to us, prepaid, in good condition)	
Heavy Duty Export Cradle	225.00

FACTORY INSTALLED OPTIONS

Hardtop (In Lieu of Navy Top)	700.00
Mast and Yardarm	225.00
Boarding Ladder	100.00
Forward Shower	260.00
Electric Motor Conversion for Toilet	105.00
Air Conditioner with Reverse Cycle Heating	1,750.00
Deluxe Paint Trim	250.00
Raw Water Strainers (Diesel Only)	200.00
Hour Meter Electric for Generator	28.00

Entertainment Center with Ice Maker	400.00
Hide-A-Bed	300.00
Lounge, Built-in Sectional Converts to Double Bed	475.00
Dual Helmsman's Seat	300.00
Sentron Battery Charger	155.00
HYCO Safety Center	200.00
Castro Hi-Lo Table	170.00
Rattan Chairs	75.00
Molded Lounge Chairs	80.00
Deluxe Entertainment Center	600.00

AC GENERATOR PLANT WITH AUTOMATIC STARTING

Onan 2500 Watt Gasoline	800.00
Onan 4000 Watt Gasoline	1,300.00
Onan 3000 Watt Diesel	1,500.00
Kohler 6500 Watt Gasoline	1,650.00
Onan 6000 Watt Diesel	2,400.00
Onan 7500 Watt Gasoline	1,850.00
Generator Raw Water Strainers (Diesel Only)	30.00

MUFFLERS

4" HYCO Fiberglass, Gas	184.00
4" Maxim Monel, Gas	344.00
6" HYCO Fiberglass, Diesel	300.00
6" Maxim Monel, Diesel	700.00

SPECIFICATIONS

L.O.A.	40'	11"
Beam	14'	
Draft	6'	35"
Freeboard Forward	6'	3"
Freeboard Aft	5'	9"
Weight	19,000 lbs.	plus
Headroom	6'	3"
Hull	One molded piece with watertight compartments	
Deck and Superstructure	One piece molded fiberglass	
Headliners	Vinyl	
Chart Deck	Formica	
Fuel Capacity	300 gallons	
Water Capacity	150 gallons	
Engine Compartment	Soundproof	
Hardware	Chrome on brass	
Windows	Safety Glass	
Floor Coverings	Carpet and Vinyl	
Steering	Hydraulic Positive	

STANDARD EQUIPMENT

Alternator or generator on each engine • additional alternator (60 amp) plus two extra batteries for ship service • battery, 12 volt on each engine • bilge pumps: two electric, one hand (Navy type) • Blower • bonded throughout • compass, 5" Constellation • controls, Morse • dual trumpet horns, air-electric • master electric distributor panel complete with 110 volt and 12 volt circuit breakers, watt meter, volt meter, battery condition meter, and pilot lights • Ensign • fire extinguishers (3) • fog bell • fuel gauge, remote reading • fuel filters • hour meters (instruments, complete • life jackets (6) • lights: anchor, bow, running, stern • line, nylon anchor and tie-up • Navy top, folding • polarity alarm • radio ground plate • sea valves on all thru hull fittings • molded self-aligning shaft logs • 1½" Tobin bronze shafts • storage compartments below deck • struts, bronze V, main and intermediate • water gauge • hot water system, electric, heat control • water pressure system • ventilated windshield • bridge deck and trunk cabin • wind-shield wiper.

Hardware: Anchor • anchor chocks • anchor bit with hawse pipe • boat hook • bow chocks (2) • bow rail and forward stanchions • bow staff and pennant • hand rails • spring cleats (4) • stern bits (2) • stern staff.

INTERIOR

Bow Stateroom: Bunks, 2 vee Polyfoam mattresses • cushion vee Polyfoam • duplex plug-in (2) 110 volt • flooring, vinyl • hatch and screen • light fixtures (2) 12 volt • mirror, half • port lights and screens (4) • storage: drawers (6), cabinets (3), hanging locker, rope locker.

Forward Head: Duplex plug-in (1) 110 volt • flooring, vinyl • lavatory • light fixture (1) 12 volt • linen locker • medicine cabinet • paper holder • port light and screen (1) • toilet • towel bar.

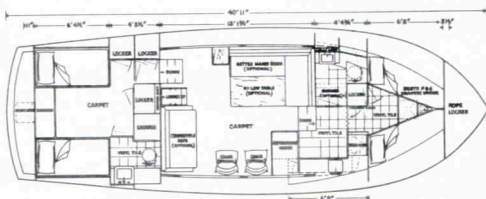
Galley: Blower • duplex plug-ins (2) 110 volt • flooring, vinyl • garbage container • light fixtures (1) 12 volt • 1-fluorescent light 110 volt • refrigerator, 10 cu. ft. electric • sink, stainless steel • storage: cabinets (3), dish locker, drawers (4), glass rack • stove, 3-burner electric and oven.

Salon: Carpet • drapes • duplex plug-ins (2) 110 volt • lights, dual bullet (3) 110 volt, 12 volt • storage cabinets • stereo record player.

Master Stateroom: Bunks, 2 Polyfoam mattresses • carpet • curtains • duplex plug-ins (2) 110 volt • lights: dual bullet lights, 12 volt, 110 volt • mirror, full length • port lights and screens • storage: dresser (10 drawers), hanging locker (3), lazarette storage compartment • escape hatch through lazarette.

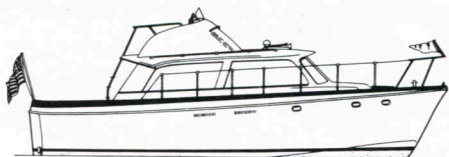
Aft Head: Curtains • duplex plug-in 110 volt • flooring, vinyl • formica counter top • lavatory, vitreous China • light fixture (1) 12 volt • medicine cabinet • paper holder • port light and screen • shower and sump pump • storage cabinet • toilet • towel bar.

(Some items optional)



Hatteras 34'

SEDAN



PRICE LIST

HATTERAS 34' FLY BRIDGE SEDAN

Twin 210 H.P. Engines	\$24,890.00
Twin 290 H.P. Engines	25,600.00
Twin GM 4-53 Diesel Engines	29,100.00

HATTERAS 34' SEDAN

Twin 210 H.P. Engines	24,190.00
Twin 290 H.P. Engines	24,900.00
Twin GM 4-53 Diesel Engines	28,810.00
Truck Shipping Cradle	150.00

(Full credit will be issued if returned to us, prepaid in good condition.)

Launch and Make-Ready, Our North Carolina Coastal Site. (Plus Freight) With Fly Bridge	350.00
No Fly Bridge	300.00
Heavy Duty Export Cradle	200.00

FACTORY INSTALLED OPTIONS

Alternator (Additional) Plus 2 extra batteries for Ship service system	260.00
Windshield Wiper (Additional)	48.00
Electric Motor for Toilet	105.00
Deluxe Paint Trim	200.00
Bar and Ice Maker	400.00
Hour Meter, Electric for generator	28.00
Controls, Dual, Pilot House (Fly Bridge Sedan Only)	850.00
Cockpit Controls	800.00
Cockpit Storage Seat	300.00
Air Conditioner 1-Ton (Suitable for cooling Pilot House only)	800.00
Air Conditioner 1 1/4-Ton (Suitable for cooling entire boat. 2 Compressors and 2 evaporators with reverse cycle heating)	1,500.00
Live Bait Well	238.00
Lounge, HYCO, Converts to Upper/Lower Berths	300.00
Raw Water Strainers (Diesel Only)	120.00
Castro Hi-Lo Table	170.00
Rattan Chairs	75.00
Molded Lounge Chairs	80.00
Sentron Battery Charger	155.00
Helmsman Chair for Lower Controls	150.00
HYCO Safety Center	200.00
Bimini Top	180.00
Galley Blower	75.00

AC GENERATING PLANT

Onan 2500 Watt Gasoline	800.00
Onan 4000 Watt Gasoline	1,300.00
Onan 3000 Watt Diesel	1,500.00
Kohler, 6500 Watt Gasoline	1,650.00
Generator Raw Water Strainer (Diesel Only)	30.00

HATTERAS 34' SEDAN

SPECIFICATIONS

L.O.A.	34' 2"
Beam	12' 6"
Draft	36"
Freeboard Forward	5' 9"
Freeboard Aft	4' 5"
Headroom	6' 3"
Weight	13,000 to 15,000
Hull	One molded piece, with water-tight bulkheads
Flying Bridge Molded Fiberglass with built-in lounge seats	
Headliners	Vinyl
Fuel Capacity (Gallons)	200
Water Capacity (Gallons)	70
Engine Compartment	Soundproof-Watertight

Engine Mounts, Rubber, Easy aligning	
Hardware	Triple plated chrome on brass
Rudders	Bronze
Shaft Logs	Self Align
Struts	Bronze
Windows	Safety glass, weather proof, non-corrosive

radio ground plates • rudders (2) • sea valves • all underwater fittings • screens • molded, self-aligning shaft logs • 1 3/8" Tobin bronze shaft • hot water system, electric heat control • water gauge • water pressure system • windshield wiper.

Hardware: anchor • anchor chocks • anchor bit with hawse pipe • boat hook • bow chocks • bow rail • bow flag, staff and pennant • hand rails • life line and stanchions on walk around deck • safety rail • spring cleats • stern cleats mounted in cockpit • stern flag staff and socket • stern hawse pipe • trunk cabin hand rails.

INTERIOR

Bow Stateroom: Bunks, 2 vee polyfoam mattresses • vee cushions (2) • duplex plug-in (1) 110 volt • light fixtures (2) 12 volt • hatch with sky light and screen • port lights with screens (4) • storage: cabinets (3), drawers, spill proof (6), hanging locker (1).

Head: Duplex plug-in 110 volt • flooring, vinyl • formica counter top • lavatory • light fixture (1) 12 volt • paper holder • port light and screen • shower and sump pump • storage: cabinet under lavatory, linen locker, medicine cabinet • toilet • towel bar.

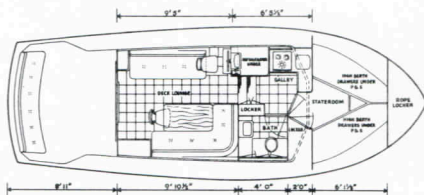
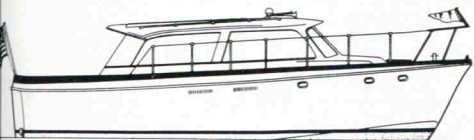
Galley: Duplex plug-in (2) 110 volt • flooring, vinyl • light fixture (1) 12 volt • refrigerator, 10 cu. ft. electric sink, stainless steel • storage: cabinets, dish lockers, drawers (6), glass rack, locker in companionway • stove, 3 burner electric, and oven.

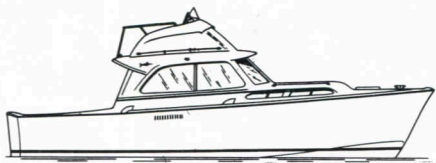
Pilothouse: Aft bulkhead enclosed with sliding doors • curtains • duplex plug-in (2) 110 volt • floor, vinyl • formica counter top • light fixture (1) 12 volt • lounge, curved sectional converts to double bed • end table • windows, opening with screens • windshield, ventilating.

STANDARD EQUIPMENT

Alternator or generator on each engine • battery, 12 volt on each engine • bilge pump: one electric, one hand • blower • bonded throughout • controls, Morse • dual trumpet horns, air-electric • master electric distribution panel complete with 110 volt and 12 volt circuit breakers, watt meter, volt meter, battery condition meter and pilot light • Ensign • fire extinguishers (2) • flooring, vinyl • fog bell • fuel filters • fuel gauges, remote reading • helmsman chair for fly bridge • hour meter, manual on lower station of dual controls and 34' Sedan • instruments, complete • complete • life jackets (4) • lights: anchor, bow, running, stern • lines, nylon anchor and tie-up • mufflers, fiberglass • polarity alarm •

(Some Items Optional)





HATTERAS 34' SPORTS CRUISER

PRICE LIST

HATTERAS 34' SPORTS CRUISER

Fly Bridge, Top Side Controls Only:	
Twin 210 H.P. Engines	\$21,880.00
Twin 290 H.P. Engines	22,590.00
Twin GM 4-53 Diesel	26,500.00

34' CRUISER

No Fly Bridge:	
Twin 210 H.P. Engines	21,180.00
Twin 290 H.P. Engines	21,890.00
Twin GM 4-53 Diesel	25,800.00
Truck Shipping Cradle	150.00

(Full Credit will be issued if returned to us prepaid in good condition.)

Launch and Make-Ready Delivery, Our North Carolina Coastal Site. (Plus Freight).

Models with Flying Bridge	350.00
Models without Flying Bridge	300.00
Heavy Duty Export Cradle	200.00

FACTORY INSTALLED OPTIONS

Lounges:	
Curved Sectional, Converts to Double Bed	475.00
Hyco: Converts to Upper/Lower Berths	300.00
Alternator (additional) Plus two extra Batteries for Ship Service System Shower and Sump Pump (Should Have Hot Water Heater)	260.00
Hot Water Heater	265.00
Electric Motor Conversion for Toilet Live Bait Well	238.00
Deluxe Paint Trim	175.00
Cockpit Rails	225.00
Stove:	
2-Burner Hot Plate	100.00
3-Burner Stove and Oven	200.00
Bulkhead and Sliding Doors Aft End of Pilot House	650.00
Bar and Ice Maker	400.00
Door: Head to Bow Stateroom	55.00
Air Conditioner 1-Ton (Suitable for Pilot House Only) with Reverse Cycle Heating	800.00
Air Conditioner 1 3/4-Ton (Suitable for Entire Boat, 2 Compressors, 2 evaporators) with reverse cycle heating	1,500.00
Bimini Top	180.00
Controls, Dual in Pilot House, Complete Instruments	850.00
Cockpit Controls	800.00
Hour Meter, Electric for Generator	28.00
Raw Water Strainers (Diesel Only)	120.00
Castro Hi-Lo Table	170.00
Rattan Chairs	75.00
Molded Lounge Chairs	80.00
Sentron Battery Charger	155.00
Helmsman Chair for Lower Controls	150.00
Windshield Wiper, Electric	48.00
HYCO Safety Center	200.00

MUFFLERS

4" Hatteras Fiberglass	184.00
4" Maxim Monel	344.00

AC GENERATOR PLANT

Onan 2500 Watt MAJ205	800.00
Onan 4000 Watt Gasoline	1,300.00
Onan 3000 Watt Diesel	1,500.00
Kohler 6500 Watt Gasoline Generator Raw Water Strainers (Diesel Only)	1,650.00
	30.00

SPECIFICATIONS

L.O.A.	34'	2"
Beam	12'	6"
Draft		36"
Freeboard Forward	5'	4"
Freeboard Aft	3'	3"
Headroom	6'	2"
Weight	13,000 to 15,000 lbs.	
Hull	One molded piece, with water-tight bulkheads	
Deck	Trunk cabin, pilot house, One molded piece	
Flying Bridge	Molded Fiberglass with built-in lounge seats	
Headliners	Molded Fiberglass and Vinyl	
Chart Deck	Molded	
Fuel Capacity (Gallons)	200	
Water Capacity (Gallons)	70	
Engine Compartment	Soundproof-Watertight	

Engine Mounts	Rubber, Easy aligning
Hardware	Triple plated chrome on brass
Rudders	Bronze
Shaft Logs	Self align
Struts	Bronze
Steering	Hydraulic Positive
Windows	Safety glass, weather proof, non-corrosive

STANDARD EQUIPMENT

Alternator or generator on each engine • battery, 12 volt on each engine • bilge pumps: one electric, one hand (Navy type) • blower • bonied throughout • controls, Morse • dual trumpet horns, air-electric • master electric condition panel complete with 110 volt and 12 volt circuit breakers, watt meter, volt meter, battery condition meter, and pilot lights • Ensign • fire extinguishers (2) • floor, vinyl covering • fog bell • fuel filters • fuel gauges, remote reading • hour meter, manual on lower station of dual control • instruments, complete • life

jackets (4) • lights: anchor, bow, running, stern • line, nylon anchor and tie-up • pilot chair for fly bridge • polarity alarm • radio ground plates • sea valves all under water fittings • screens • molded self-aligning shaft • 1 3/8" Tobin bronze shafts • struts • water gauge • water pressure system.

Hardware: Anchor • anchor chocks • anchor bit with hawse pipe • boat hook • bow chocks • bow flag staff and pennant • bow rail • fly bridge ladder • fly bridge safety rail • hand rail • pilothouse hand rail • spring cleats • staff socket • stern cleats mounted in cockpit • stern flag staff • stern hawse pipe • trunk cabin hand rails.

INTERIOR

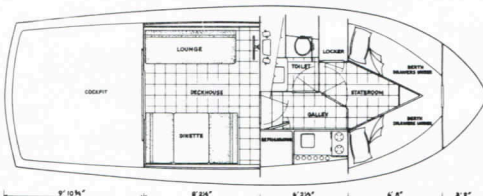
Salon: Dinette, seats four, sleeps two • duplex plug-ins (2) 110 volt • floor, vinyl • light fixture, 12 volt.

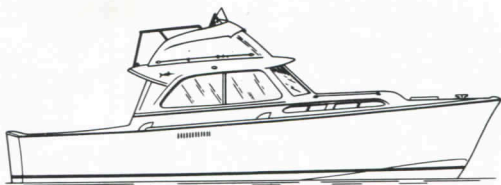
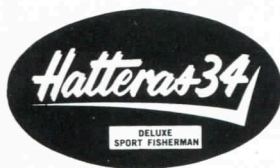
Galley: Duplex plug-in (1) 110 volt • floor, vinyl • light fixture (1) 12 volt • port lights and screens (2) • refrigerator, electric, 10 cu. ft. • sink, stainless steel • storage: cabinets, dish locker, drawer, glass rack • stove, alcohol.

Head: Cabinets (3) • duplex plug-in (1) 110 volt • flooring, vinyl • lavatory • light fixture (1) 12 volt • medicine cabinet • mirror • paper holder • port light and screen • toilet, hand • towel bar.

Bow Stateroom: Bunks, 2 vee polyfoam mattresses • duplex plug-in 110 volt • flooring, vinyl • hatch and screen • light fixture (2) 12 volt • rope locker • storage: drawers (6), cabinets (3), hanging locker.

(Some items optional)





HATTERAS 34' DELUXE SPORT FISHERMAN

PRICE LIST

HATTERAS 34' DELUXE SPORTS FISHERMAN

Twin 210 H.P. Engines	\$24,915.00
Twin 290 H.P. Engines	25,595.00
Twin GM 4-53 Engines	29,535.00

Included the following additional

Extras as Standard Equipment:
Cockpit Controls (Tachometer and alarm System) Curved Sectional Lounge or Dinette, Bar with Ice Maker, Bulkhead and Sliding Doors, Hot Water Heater, Shower, 3-Burner Stove with Oven, Mufflers

Truck Shipping Cradle **150.00**

(Full Credit will be issued if returned to us, prepaid in good condition)

Launch and Make Ready, Our North Carolina Coastal Site (Plus Freight) **350.00**

Heavy Duty Export Cradle **200.00**

FACTORY INSTALLED OPTIONS

Lounge—HycO converts to Upper/Lower Bunks **300.00**

Alternator (additional), Plus two Extra Batteries for Ship Service System **260.00**

Electric Motor Toilet **105.00**

Live Bait Well **238.00**

Deluxe Paint Trim **175.00**

Controls, Third in Pilot House, (Bar Eliminated) **800.00**

Door, Head to Bow Stateroom **55.00**

Hour Meter, Electric for Generator **28.00**

Bimini Top **180.00**

Air Conditioner 1-Ton with reverse Cycle Heating **800.00**

Air conditioner 1 3/4 Ton (Suitable for entire boat, 2 compressors and 2 evaporators) with reverse cycle heating **1,500.00**

Raw Water Strainers (Diesel Only) **120.00**

Castro Hi-Lo Table **170.00**

Rattan Chairs **75.00**

Molded Lounge Chairs **80.00**

Sentron Battery Charger **155.00**

Windshield Wiper Electric **48.00**

HYCO Safety Center **200.00**

Helmman Chair for Lower Controls **150.00**

AC GENERATING PLANTS

Onan 2500 Watt MAJ 205 **800.00**

Onan 4000 Watt Gasoline **1,300.00**

Onan 3000 Watt Diesel **1,500.00**

Kohler 6500 Watt Gasoline **1,650.00**

Generator Raw Water Strainer (Diesel Only) **30.00**

SPECIFICATIONS

L.O.A.	34' 2"
Beam	12' 6"
Draft	36"
Freeboard Forward	5' 4"
Freeboard Aft	3' 3"
Headroom	6' 2"
Weight	13,000 to 15,000
Hull	One molded piece, with water-tight bulkheads
Deck	Trunk Cabin, Pilot House, One Molded Piece
Flying Bridge	Molded Fiberglass with built-in lounge seats
Headliners	Molded Fiberglass and Vinyl
Chart Deck	Molded
Fuel Capacity (Gallons)	200
Water Capacity (Gallons)	70
Engine Compartment	Soundproof-Insulation, Watertight
Engine Mounts	Rubber, Easy Aligning
Hardware	Triple plated chrome on brass
Rudders	Bronze
Shaft Logs	Self Align
Struts	Bronze
Steering	Hydraulic Positive
Windows	Safety glass, weather proof, non-corrosive

manual on lower controls • life jackets (4) • lights: anchor, bow, running, stern • lines, nylon anchor and tie-up • mufflers • pilot chair for fly bridge • polarity alarm • radio ground plates • sea valves all under water fittings • screens • molded, self-aligning shaft • 1 3/8" Tobin bronze shafts • tachometers • water gauge • hot water system, electric, heat control • water pressure system.

Hardware: Anchor • anchor chocks • anchor bit with hawse pipe • boat hook • bow chocks (2) bow flag staff and pennant • bow rail • fly bridge ladder and safety rail • hand rails • pilothouse hand rails • spring cleats • staff socket • stern cleats mounted in cockpit • stern flag staff • stern hawse pipes • trunk cabin hand rails.

INTERIOR

Salon. Bar and ice maker • bulkhead and sliding doors • curtains • curved sectional lounge, converts to double bed • duplex plug-in (2) 110 volt • floor vinyl • light fixture (1) 12 volt.

Head: Duplex plug-in (1) 110 volt • floor, vinyl • lavatory • light fixtures (1) 12 volt • medicine cabinet with mirror • paper holder • port light and screen (1) • shower and sump pump • toilet, hand • 3 lockers.

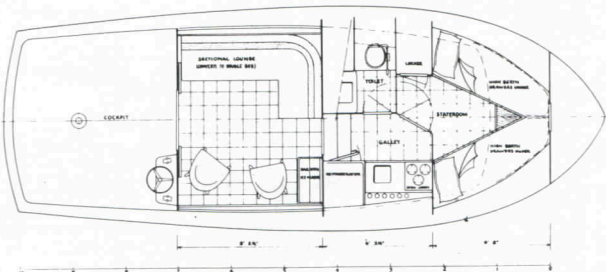
Galley: Counter top formica • duplex plug-in (1) 110 volt • floor, vinyl • light fixture (1) 12 volt • refrigerator, 10 cu. ft. electric • sink, stainless steel • Storage: dish locker, glass rack, drawer, cabinet • stove and oven, 3-burner electric.

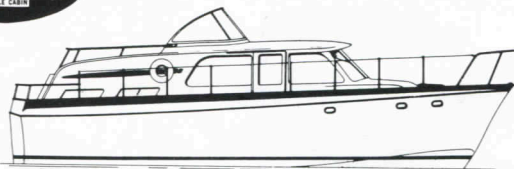
Bow Stateroom: Bunks, 2 vee Polyfoam mattresses • cushion, vee • duplex plug-in (1) 110 volt • floor, vinyl • hatch and screen • light fixtures (2) 12 volt • (2) rope locker • storage: drawers, cabinets, hanging locker.

STANDARD EQUIPMENT

Alarm system • alternator or generator on each engine • battery, 12 volt on each engine • bilge pumps, one electric, one hand • blower • bonded throughout • controls, Morse, cockpit and fly bridge • dual trumpet horns, air-electric • master electric distribution panel complete with 110 volt and 12 volt circuit breakers, watt meter, volt meter, battery condition meter, and pilot lights • Ensign • fire extinguishers (2) • floor, vinyl covering • fog bell • fuel filters • fuel gauges, remote reading • instruments, complete • hour meter,

(Some items optional)





34-FOOT FLY BRIDGE DOUBLE CABIN

PRICE LIST

34' Fly Bridge Double Cabin	
Twin 210 H.P. Engines	\$26,490.00
Twin 290 H.P. Engines	27,450.00
Twin GM 4-53 Diesel Engines	31,350.00

34' DOUBLE CABIN

Twin 210 H.P. Engines	25,990.00
Twin 290 H.P. Engines	26,950.00
Twin GM 4-53 Diesel Engines	30,850.00
Truck Shipping Cradle	150.00

(Full credit will be issued if returned to us, prepaid in good condition.)

Launch and Make-Ready, Our North Carolina Coastal Site. (Plus Freight) With Fly Bridge	350.00
No Fly Bridge	300.00
Heavy Duty Export Cradle	200.00

FACTORY INSTALLED OPTIONS

Boarding Ladder	100.00
Alternator (Additional) plus two extra batteries for Ship Service System	260.00
Electric Motor Conversion for toilet	105.00
Hour Meter, electric, Generator	28.00
Deluxe Paint Trim	175.00
Air Conditioner 2-Ton with Reverse cycle heating	1,750.00
Sofa Bed (Sleeps Two)	250.00
Bar & Ice Maker	400.00
Raw Water Strainers (diesel only)	120.00
Shower Forward Head and Sump Pump	260.00
Castro Hi-Lo Table	170.00
Rattan Chairs	75.00
Molded Lounge Chairs	80.00
Sentron Battery Charger	155.00
Galley Blower	75.00
Windshield Wiper	48.00
HYCO Safety Center	200.00
Bimini Top for Fly Bridge Model	180.00

MUFFLERS

4" Fiberglass	184.00
4" Maxim Monel	344.00

AC GENERATING PLANT

Onan 2500 Watt Gasoline	800.00
Onan 4000 Watt Gasoline	1,300.00
Onan 3000 Watt Diesel	1,500.00
Onan 6500 Watt Gasoline Generator	1,650.00
Raw Water Strainers (Diesel only)	30.00

34-FOOT DOUBLE CABIN

SPECIFICATIONS

L.O.A.	34'	2"
Beam	12'	6"
Draft		36"
Freeboard Forward	5'	9"
Freeboard Aft	4'	5"
Headroom	6'	3"
Weight	14,000 to 17,000 lb.	
Hull	One molded piece, with water-tight bulkheads	

Deck & Cabin One molded piece incorporating fore decks, cabin side, cabin top—walk around deck, chart deck and bulkhead, aft deck, as one complete piece.

Headliners	Vinyl
Fuel capacity	200 gallons
Water capacity	70 gallons
Engine compartment	Insulated
Engine mounts	Rubber, Easy aligning
Hardware	Triple plated chrome on brass
Rudders	Bronze
Shaft logs	Self align, moulded
Steering	Hydraulic Positive
Windows	Safety Glass

STANDARD EQUIPMENT

Alternator or generator on each engine • battery, 12 volt on each engine • bilge pumps: two electric, one hand (Navy type) • blower • bonded throughout • chairs: adjustable helmman seat, molded-in companion seat • controls, Morse • dual trumpet horns, air-electric • master electric distribution panel complete with 110 volt and 12 volt circuits, watt meter, volt meter, battery condition meter, and pilot lights • Ensign • fire extinguishers (2) • fuel gauge, remote reading • fog bell • hour meters • large fuel filters • instruments, complete • life jackets (4) • lights: anchor, bow, running, stern • lines, nylon, anchor and tie-up • Navy top • polarity alarm • radio ground plates • sea valves all under water fittings • moulded self aligning shaft logs • 1 3/8" Tobin bronze shafts • struts, main and intermediate • water gauge • hot water system, electric, heat control • water pressure system.

(Some Items Optional)

Hardware: Aft deck rail and stanchions • anchor • anchor chocks • anchor bit with hawse pipe • boat hook • bow chocks • bow rail • bow staff and pennant • cockpit rail and stanchions • deck scupper drains • hand rails on walk around deck • spring cleats • staff socket • stern bits • stern flag staff.

INTERIOR

Bow Stateroom: Bunks, 2 vee Poly-foam mattresses • cushion vee Poly-foam • duplex plug-in 110 volt • floor, vinyl • hatch and screen • light fixtures (2) 12 volt • port lights with screens (4) • rope locker • storage: drawers (4), cabinets (2), hanging locker.

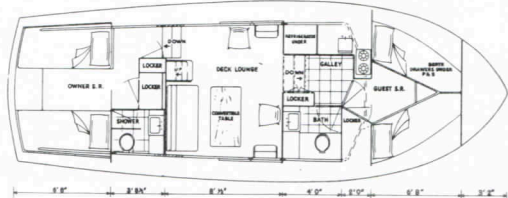
Forward Head: Duplex plug-in (1) 110 volt • flooring, vinyl • formica counter top • lavatory • light fixtures (1) 12 volt • paper holder • port light and screen • storage: cabinet under lavatory, linen locker, medicine cabinet • toilet • towel bar.

Galley: Duplex plug-in (2) 110 volt • flooring, vinyl • formica counter top • light fixtures, (1) 12 volt • refrigerator, 10 cu. ft. electric • sink, stainless steel • storage: cabinets, dish locker, drawers (6), glass rack, locker in companionway • stove, 3-burner electric with oven.

Salon: Carpet • duplex plug-in (2) 110 volt • doors, sliding • formica counter top • light fixture (1) 12 volt • opening side windows with screen • curtains • opening windshield.

Master Stateroom: Bunks 6'3" Poly-foam mattresses (2) • carpet • curtains • duplex plug-ins (2) 110 volt • entry door, accordion fold • light fixtures (2) 12 volt • mirror, full length • storage: cabinets at companionway (2), dresser built-in, 5 drawers, storage cabinet under • full hanging locker • windows: sliding with screens, aft escape entry with screen.

Aft Head: Curtains • duplex plug-in (1) 110 volt • flooring, vinyl • formica counter top • lavatory • light fixture (1) 12 volt • paper holder • shower and sump pump • storage: cabinet under lavatory, full length linen locker, medicine cabinet • toilet • towel bar • window, sliding with screen.



ACCESSORY PRICE LIST

Anchor 13 lbs.	\$ 32.00
Anchor 22 lbs.	45.00
Bait & Tackle Box	235.00
Boat Hook	12.50
Bilge Pump, Electric Manual	50.00
Cockpit Boarding Steps (Additional) 34's	38.00

COMPASSES:

4" Corsair	48.00
5" Constellation	145.00
Extinguisher, Fire, 2½ lb. Dry-Chem	17.00
Gin Pole	225.00
Life Jacket	10.00
Line, ½" Nylon 100 feet	25.00
Line, ¾" Nylon 100 feet	40.00
Opening Windshield on Fly Bridge 41' Convertible	75.00

SENTRON:

20 Amp	155.00
30 Amp.	220.00
Spare Parts Kit, Chrysler 318B	34.00
Spare Parts Kit, Chrysler 426B	40.00
Stereo Tape Player	225.00

TABLES:

Combination Coffee/Dining	140.00
Castro Hi/Lo	170.00
Tinted Glass 41' Conv. (Only for Cockpit Controls)	250.00
Third Toilet, Hand for 41' D.C.	180.00
Third Toilet, Electric for 41' D.C.	285.00

PROPELLER, Pairs (Spare)

18" Diameter	\$118.00
20" Diameter	156.00
21" Diameter	190.00
24" Diameter	260.00
25" Diameter	282.00

SHAFTS: (Spare)

Bronze, Each:	
34' S.C., D.S.F., and Sedan 1⅜"	70.00
34' Double Cabin 1⅜"	85.00
41' Convertible 1½"	100.00
41' Double Cabin 1½"	135.00

Monel, Each:	
34' S.C., D.S.F., and Sedan 1⅜"	135.00
34' Double Cabin 1⅜"	165.00
41' Convertible 1½"	175.00
41' Double Cabin 1½"	250.00

Monel in place of Bronze, Pair:	
34' S.C., D.S.F., and Sedan 1⅜"	150.00
34' Double Cabin 1⅜"	175.00
41' Convertible 1½"	200.00
41' Double Cabin 1½"	300.00