

from the A-1000 series

of Special Design Bows

----- **The DELTA**



The DELTA 68"
Draw to 31" \$85.00



DELTA 58" Hunting
Draw to 31" \$79.50



DELTA 65" TOURNAMENT



DELTAS - 68" - 64" - 58" .
DELTA 64" for Shorter
Draw Lengths - Draw Limit 28"

STAGHORN ARCHERY CO.

MERRILL, WISCONSIN

Tel. Merrill-1489-J-2

1958
260

WHAT YOU SHOULD KNOW ABOUT ANY BOW.

Fiberglass is sensitive to heat, not cold. As temperature rises, limbs become increasingly limber resulting in loss of cast and tendency to twist. A bow is affected in temperatures above 60 degrees and has a maximum tolerance of 130 degrees. Avoid exposing your bow for prolonged periods of time to any intense heat.

LIMB ALIGNMENT — No reliable manufacturer produces bows with limbs out of alignment. You may find the limbs out of alignment if in shipping, the box was exposed to heat and some pressure, or, if the bow was displayed near a radiator or a window exposed to direct sunlight. Correcting the limbs is a simple procedure unless it is an unusually severe condition.

VISUAL CHECK — The most accurate visual method is to set the strung bow vertically on the floor in front of you using the tip on the floor as one pivot and placing the other tip on the chin as the other pivot. Rotate bow on these pivot points (be careful neither tip moves) 90 degrees to one side looking for an edge of lower bow nock. Bring back to center and rotate 90 degrees to opposite side and look for an equal amount on opposite side of lower bow nock. You can see as little as 1/32" out of alignment. Reverse bow and check other limb.

LIMB CORRECTION — Once it is determined that your limb is twisted, it is best to mark the direction of the twist with a small mark on the side of the limb at the tip of the bow. A small line made with a wick pen or ballpoint will do. The next step is to force the limb back gently into alignment by twisting the limb in the opposite direction of the twist. This is something that might have to be done several times before the limb is once again true. It is best to do this straightening before you start to shoot and when you are finished and store the bow. You will find by following the above procedure that the limbs are quite easy to keep in perfect alignment. In cases of extreme limb twist, the advice of the manufacturer is recommended.

Did you know that...

- heat is your bow's worst enemy
- keeping bow limbs in alignment as well as keeping arrows straight is the responsibility of the archer
- too high a fistmele can cause limb twist
- limb vibration is a product of balance, not imbalance
- changing your finger position on the string or your style of grip can put your bow out of balance
- the cut of the handle determines whether or not a bow will balance vertically in your hand
- arrow spine changes with draw length. A 35 lb. arrow will not necessarily shoot well from a 35 lb. bow if your draw length is longer or shorter than 28"
- bow tips are stressed in one direction, not the other. If you lean on a bow in vertical position, you could easily snap off a tip.

The Staghorn Story

Staghorn Bows are the product of three generations of bow making. From Belgium, many years ago, where difficult archery games taxed bowmakers ingenuity, through America's transition from casual shooting to competitive tournaments, to today's demand for highly developed equipment, bow making has been a challenge and an art in the Pyle family.

Since 1951 when the bows came under company name, Staghorn has produced only top line bows of quality, beauty, and maximum performance. The knowledge of forces, balance, and strength factors influencing their design and production has proved Staghorn Bows to be so durable that a lifetime guarantee is possible.

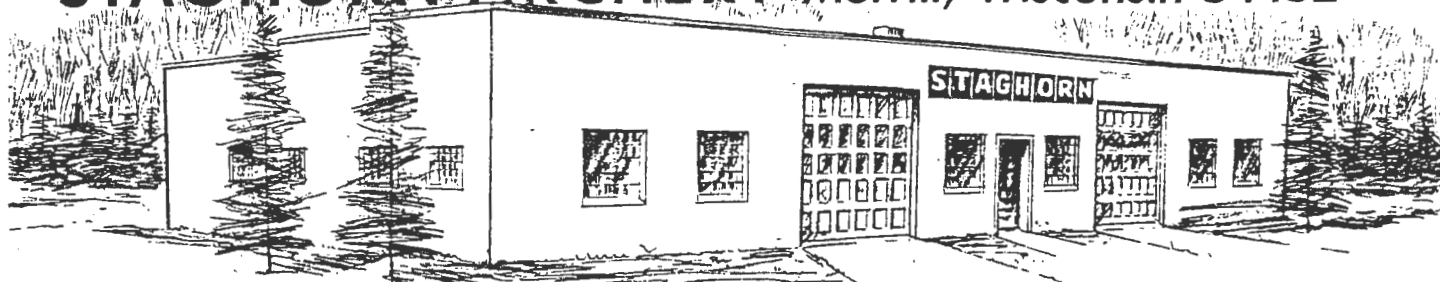
If you are considering a STAGHORN Bow
Write for:

1. Product information	3. Bow Technology
2. Customer Information	4. About Staghorn
	5. Description of models

Staghorn Bows available at selected archery shops. Outside these areas, write to the factory.

Staghorn International shipments through Pacific Air Freight from O'Hare International Airport, Chicago and in the United States and Canada by parcel post.

STAGHORN ARCHERY Merrill, Wisconsin 54452



TEL. 536-2664

Ordering Information

MODEL — Order by Series and bow length. Generally, longer bow lengths are preferred when draw length is over 28".

WEIGHT — Staghorn Bows are rated at 28" and for draw weight only. Weight increases evenly at about 1 3/4 # per inch of draw. Draw length is measured to the outside edge of shelf.

HANDLE — Determined by wrist position at full draw. Elevated, level, dropped, full hand pressure. Submit outline of hand with pressure points indicated, angle of thumb and fingers, and open or closed grip. Information not required for Masters and Badgers.

RELEASE* — **STANDARD** — one finger above nock, two below. **GUNBARRELING** — three fingers under nock. **WALKING THE STRING** — varying finger position according to distance.

STRING NOCK — Nock position relative to arrow rest.

ARROWS — Length, size and type. Feathers or vanes.

ARROW REST — Type and height above shelf. Position forward or back of center.

SIGHT WINDOW — Depth may be cut to center, 1/8", 3/16", 1/4" past center. Height is maximum permitted by riser length.

DELIVERY — Specify required delivery date. Standard delivery three to four weeks except August-November.

Personal specifications will be carried out within the limits of durability and good taste.

*For smooth shooting and best performance, it is necessary to specially balance the bow for any release that moves the hand on the string away from a standard release.

Staghorn Specifically

With the high efficiency of Staghorn Bows, use over-spined arrows, factory recommended fistmele, and slightly heavier string for best performance.

For best groups, set arrow rest or striker plate at center or forward of center — never toward the inside.

For best arrow flight, nock the arrow 1/4" or 5/16" above level of arrow rest. We recommend arrows cut slightly longer than draw length.

Staghorn makes twenty-three models in five series. Choose a length and model for your shooting interest and physical stature that will give you the most pleasure in shooting.

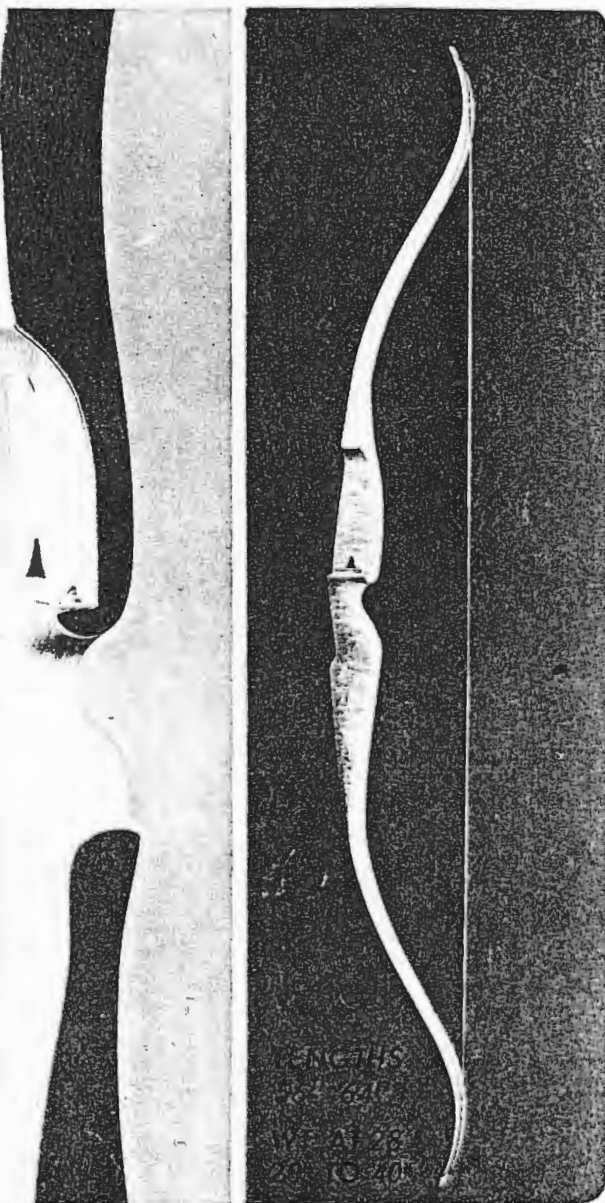
Staghorn Guarantee

From date bow is serial numbered. Staghorn bows are unconditionally guaranteed on workmanship and materials for a period of one year. After one year or in case of accident, maximum service charge is \$30.00. Transferrable. Service period unlimited.

A Staghorn Guarantee never runs out.

We have never had a customer dissatisfied with our bow care or service charges.

Little Pro



\$ 45.05

Staghorn "Little Pro" for young archers who take the sport seriously. Top quality materials, deep sight window, modified recurve, standard bow nocks. In available light woods.

Classic

Contrasting Rosewoods and Weight Stabilizers

with DUAL WEDGE LIMB & TUNER

The Classic combines all the concepts so popular today and Staghorn's finest features in a prestige model for tournament shooting.

The elaborate design contrasts Brazilian rosewood with African rosewood in overlays and stabilizer mounts. Choice of brass sphere weights or wand stabilizer. Heavy physical weight is balanced. The new channeled shelf gives excellent clearance for vanes. The sight window, cut 1/4" past center, with Tuner installed puts you in the center of the target with a simple turn of the tuning knob.

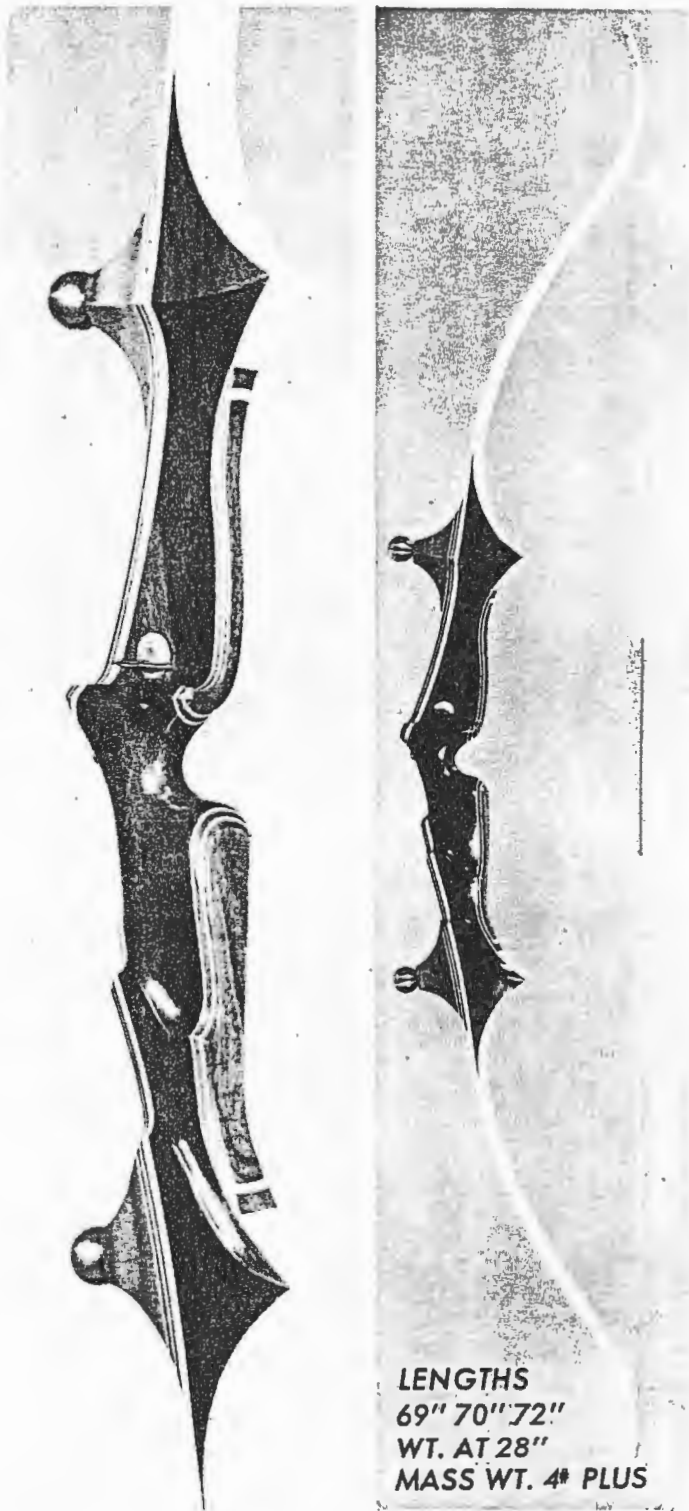
The handle can be made to order. Handle fit is important — for accuracy, for comfort. If a handle is too large or too small, too open or too closed, some good hits will be lost. If the standard handle, medium California style, does not fit your hand, you can order one that does. High wrist style handle is pictured.

Balancing of the forces on the limbs is essential to smooth soft shooting. Since changing a shooting style changes the balance, custom balancing for your style of shooting assures you of the smooth action and maximum performance for which the bow was designed.

Dual Wedge Limb gives diagonal stressing to the limb which resists torque and makes the bow more forgiving of human error.

The Classic incorporates these features to give the archer every advantage in tournament shooting.

You will do better if these things are in the bow that you shoot.

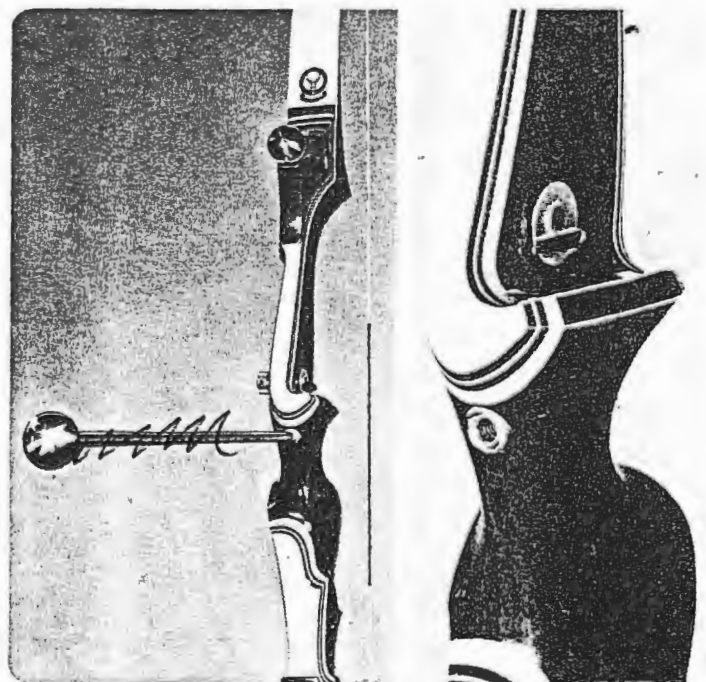


LENGTHS
69" 70" 72"
WT. AT 28"
MASS WT. 4# PLUS

\$205.00

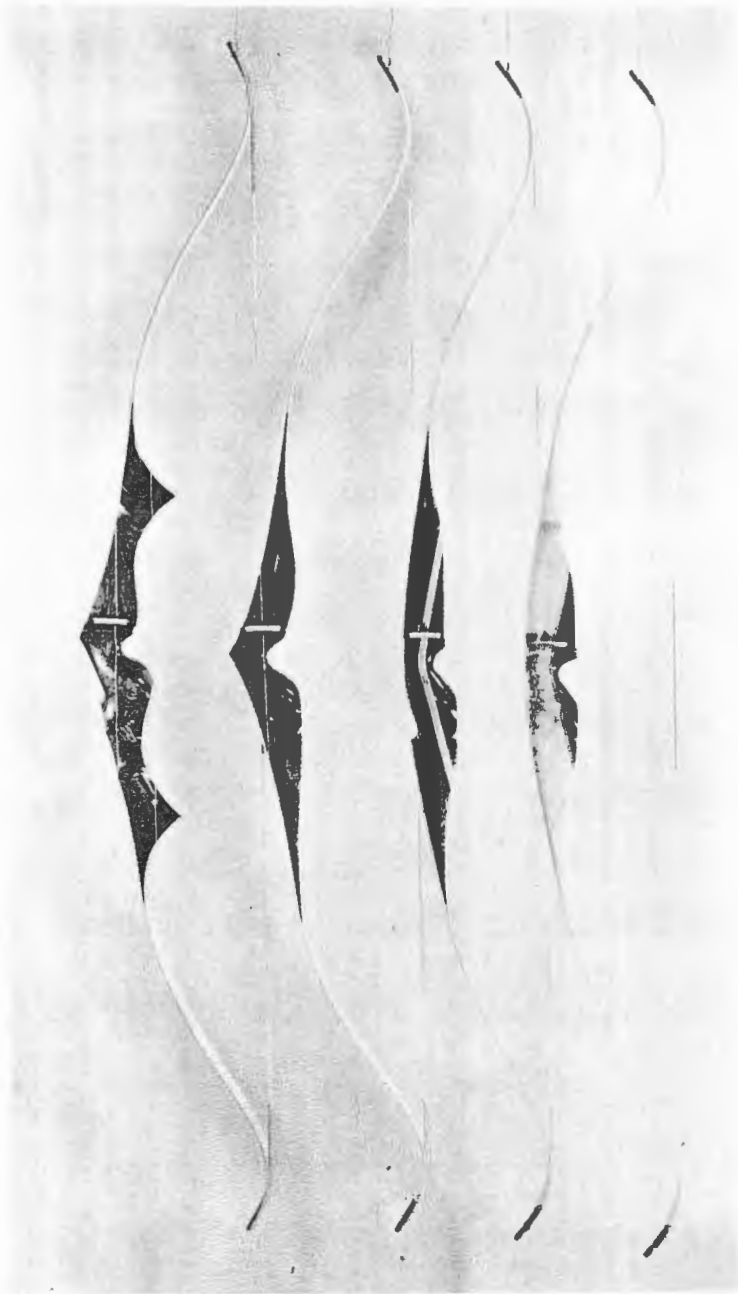
*without
weights*

The Classic includes all of Staghorn's finest features in a prestige tournament bow. The riser design in contrasting rosewoods features multiple overlays, stabilizer mounts and sphere weights or wand stabilizer. Channeled shelf with adjustable Tuner, handle proportioned and styled for your hand. Performance features smooth easy action (somewhat faster than comparable bows) and Dual Wedge Limb (See page 4). Also, custom balancing to assure smooth maximum performance for which the bow was designed. Padded bowcase. Lifetime Guarantee. Delivery six to eight weeks.



YOUR INVESTMENT IS PROTECTED BY STAGHORN'S LIFETIME GUARANTEE.

Tournament Models



TRIUMPH

65" - 69" - 72"

Bubinga

DELTA

65" - 68" - 72"

Purple Heart or
Bubinga
\$95.00 up

TEMPEST

64" - 67"

Purple Heart
\$67.50

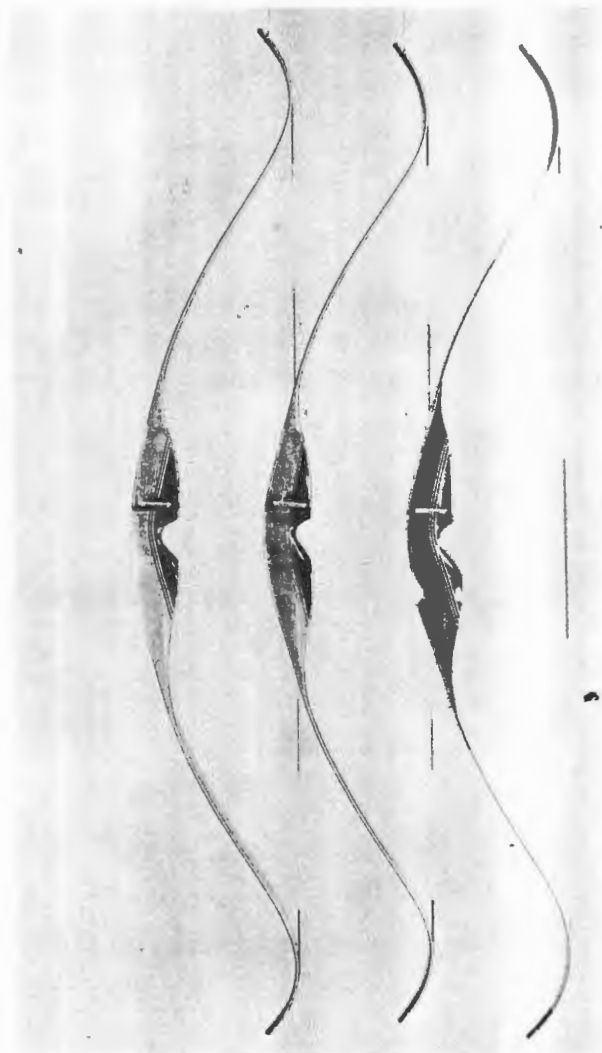
MASTER

67"

Birdseye Maple
& Rosewood
\$54.50

\$119.50

Hunting Bows



HUNTMASTER

60"

Birdseye Maple & Rosewood. Standard handle.

58"

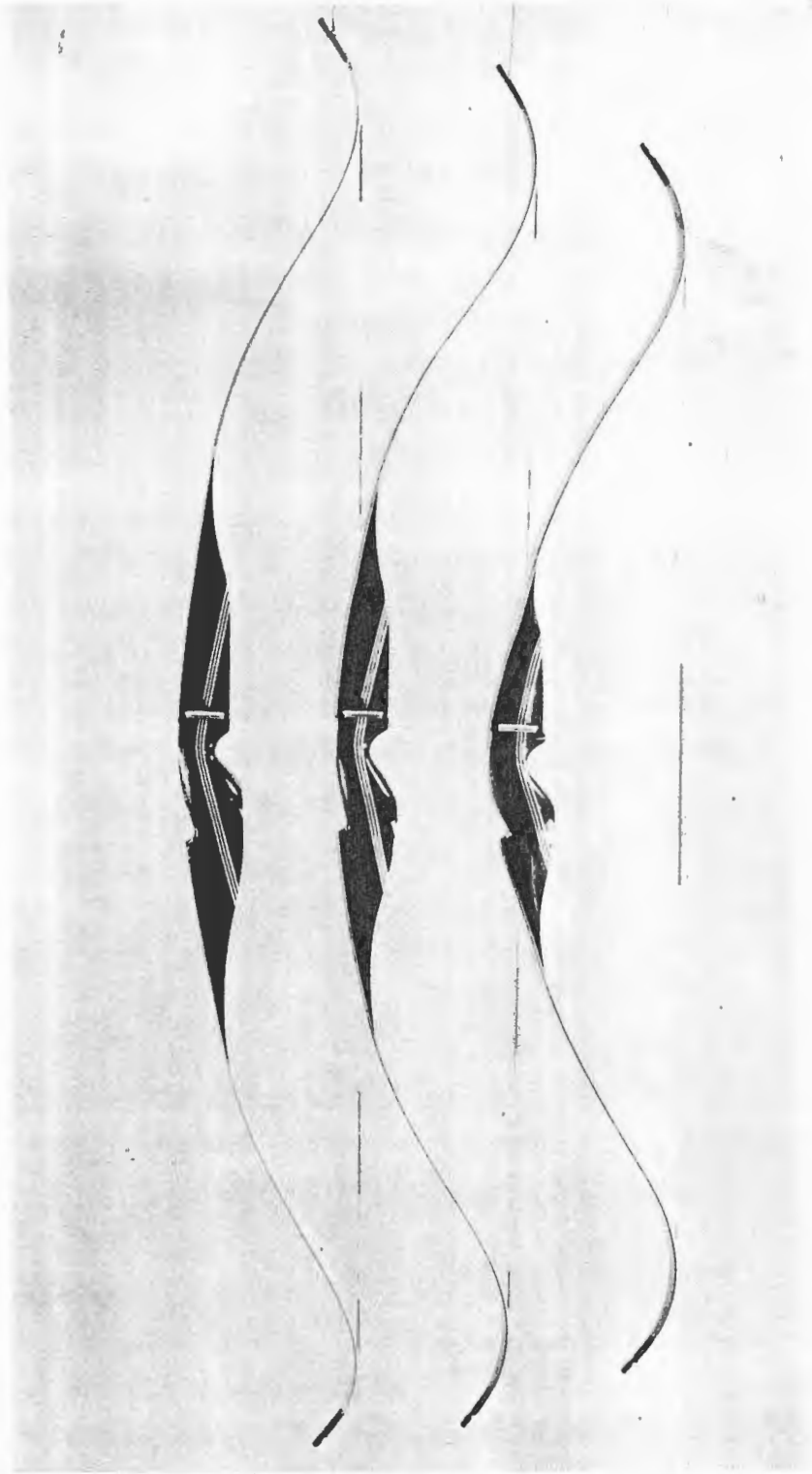
TEMPEST

58"

Styled handle with thumb rest.

STAGHORN ARCHERY CO., INC.
Telephone 536-2664 Merrill, Wisconsin

Tempest Series



TEMPEST 67''

TEMPEST 64''

TEMPEST 58''

Purple Heart Riser wood. Handle styled and sized to order. Thumb rest included. \$67.50. Maximum performance bows at a reasonable price for both tournament and hunting.

STAGHORN ARCHERY CO., INC.
Telephone 536-2664 Merrill, Wisconsin

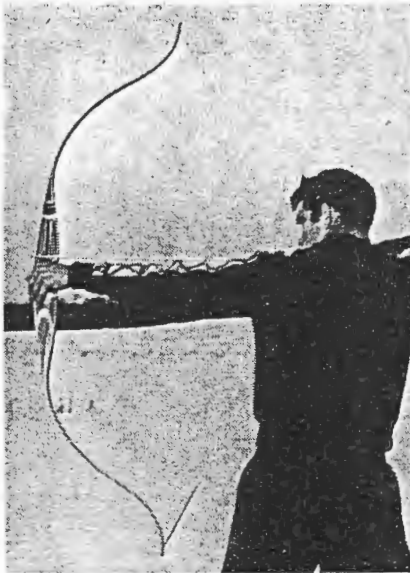


STAGHORN

"SPEEDFLIGHT"

Falcon — Buffalo — Lightning — Magnum
- - - proving themselves wherever they go.

You will need the speed; you will want the accuracy for Outdoor Tournament Time—and your own custom fit handle for hours of comfortable shooting. To hit the long shots, to pin down the short ones, and zero in for score, your bow has to be alive for pleasure and satisfaction in shooting. Where such a bow has beauty and distinction reflected in every line, and it is made for you, you know pride in ownership as well as in your score. A Staghorn Speedflight is not just a bow; it is a personality in the field.



BUFFALO

all around bow
66" — draw 30"

\$69.50

FALCON

tournament

67" — draw 23"
69" — draw 31"
65" — draw 26"

Peak performance at your draw length.

\$69.50 — \$79.50

STAGHORN

Where craftsmanship is the standard

There are many ways to learn the story of Staghorn craftsmanship. But the best of these — and certainly the most enjoyable — is simply to examine and shoot a Staghorn Speedflight Bow.

Every detail of its composition reveals a skill and thoroughness that is exceptional. Every graceful, smooth flowing line reflects a talent for design and smooth action. And every lightning shot speaks eloquently of Staghorn's great soundness of design and technique. The exactness of measurement, the focus of forces explain Staghorn performance - - - and that each craftsman is his own severest critic.

Examine a Staghorn soon - - - and see for yourself how fine a bow can be when craftsmanship is the uncompromising standard of its makers.

WHAT LOOKING WON'T TELL YOU, A FEW SHOTS WILL

Any Speedflight model interpreted in rare wood and featuring for the individual taste. Custom prices on request.

STAGHORN ARCHERY CO.

MERRILL, WISCONSIN

Speedflight Series



FALCON 68"

BUFFALO 68"
(more deflex) .

MAGNUM 64"

Standard model – Purple Heart; Custom model – Rosewood (Extra charge).
Forward lean handle, made to order grip, \$89.50

Outstanding feature on the Speedflights is that all forces on the limbs lie well back of your hand which helps counteract the effect of torque or rotation on the handle.

STAGHORN ARCHERY CO., INC.
Telephone 536-2664 Merrill, Wisconsin



THE DELTAS

Maximum performance bows, the ultimate in stability and accuracy combined with the exceptional "live limb" speed. Unquestionable quality, proven durability.

- Full pistol grip.
- Deep "V" handle, torque relieved.
- Personalized handle.
- Long, fast limbs.
- High speed, maximum performance for your draw length.
- High sight window.
- Performance guaranteed.
- The Bow guaranteed.

INTERNATIONAL 72"

Smooth, easy draw.

30" riser.

Draw to 31".

Maximum performance at 29"-31" draw.

Sight window can be cut to 8".

It's an interesting coincidence that an early brochure featuring William S. Pyle with one of the 1960 "Advanced Design" Deltas overlooks the then future, and now present, site for the scenic Northwoods shop location on the property of Dillon G. McMullen.

With rigid standards and uncompromising demands on the work of the employees, the Staghorn Archery Company has had a remarkable durability record and no problems with their bows. Technical bulletins were sent to dealers and customers periodically on subjects relating to understanding and care of the bow; on design and performance; and results of testing as well as information on new models. The company has guaranteed its bows as long as they are out, regardless of age or who owns them. Every effort and consideration has been given to the archer's needs and wishes as long as he takes good care of the bow. "If he does not, any person, regardless of status, will receive a long and eloquent rashing from William S. Pyle on the respect due a highly accurate and expensive piece of equipment."

The 1970's began with steady production of the Badger, XP-60 and XP-64, Tempest, International and Tournament models. They were sent by direct order and through dealers throughout the States and internationally. The select, but long known Staghorn feature for penetration was extending as well into the market place. During this decade in recurve history, two significant conditions evolved:

The XP-60 and XP-64 became distinguished by testimonials as the ultimate hunting bow.

Changes in mass marketing led to changes in glass quality by suppliers and the inaccessibility of a Staghorn choice of glass.

The start into 1980 was marked as a dormant period, then the return of select glass, an apprenticeship and new interest.



In 1982, following an apprenticeship, Staghorn Archery Company became the charge of two brothers. An important and generous working relationship continues today with Bill. His background in aviation technology, metal fabrication, and ballistics still continues to have an underlying bearing. This history of Staghorn became combined with the diverse and practical backgrounds of Roger and Dillon McMullen. Both are members of Universal Engineering Corporation, a family held, Pennsylvania based, innovative organization providing consulting engineering services. It has also been their fortune to have had relevant experience in many states, the Carribbean, Europe and Africa.

Roger B. McMullen worked with fiberglass, exotic epoxy and wood marine fabrication in Florida for more than 16 years. He has been privileged to work beside some of that arena's master craftsmen, from ocean racers to several of the world's finest yachts.

Dillon G. McMullen was building his own archery equipment in the 1950's, grew up with the development of the field courses of southeastern Pennsylvania, and made a collection of native bows during three years in southeastern Africa.

Today there is a special commitment. The last 30 years developed a type of cult. There have been a discerning few individuals who, by becoming accomplished with a Staghorn or by merely striving to, have cultivated an admiration and respect that is Staghorn. Now there are no dealers, no stocked bows. Limited and custom craftsmanship on the part of the bowyer, approval by William S. Pyle, and performance in the hand of the customer is the one right way to perpetuate the history that is Staghorn. Custom production in order of Registration is Staghorn today. The history of Staghorn Archery Company is one you will take part in.

¹Now in 1983, Process IV is being tested as yet another cutting edge in Archery history.

²William S. Pyle is one of very few fighter pilots to have flown most every type plane in WWII. At the same time, Elinore W. Pyle was a test pilot for the reconstructed planes.