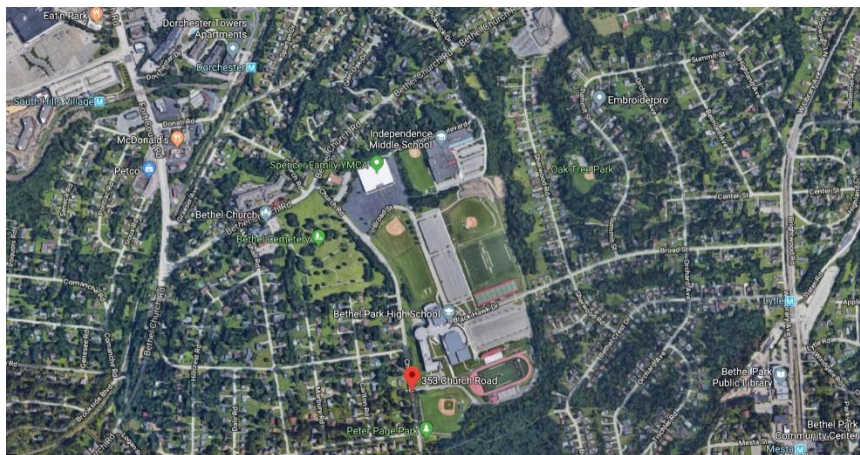


WESTMORELAND COUNTY AMERICAN LEGION YOUTH BASEBALL 2019 – Field Directions

Bethel Park

Bob Purkey Field
353 Church Road
Bethel Park PA 15102



Millennium Park
5900 Baptist Road
Bethel Park PA 15102



WESTMORELAND COUNTY AMERICAN LEGION YOUTH BASEBALL

2019 – Field Directions

Burrell

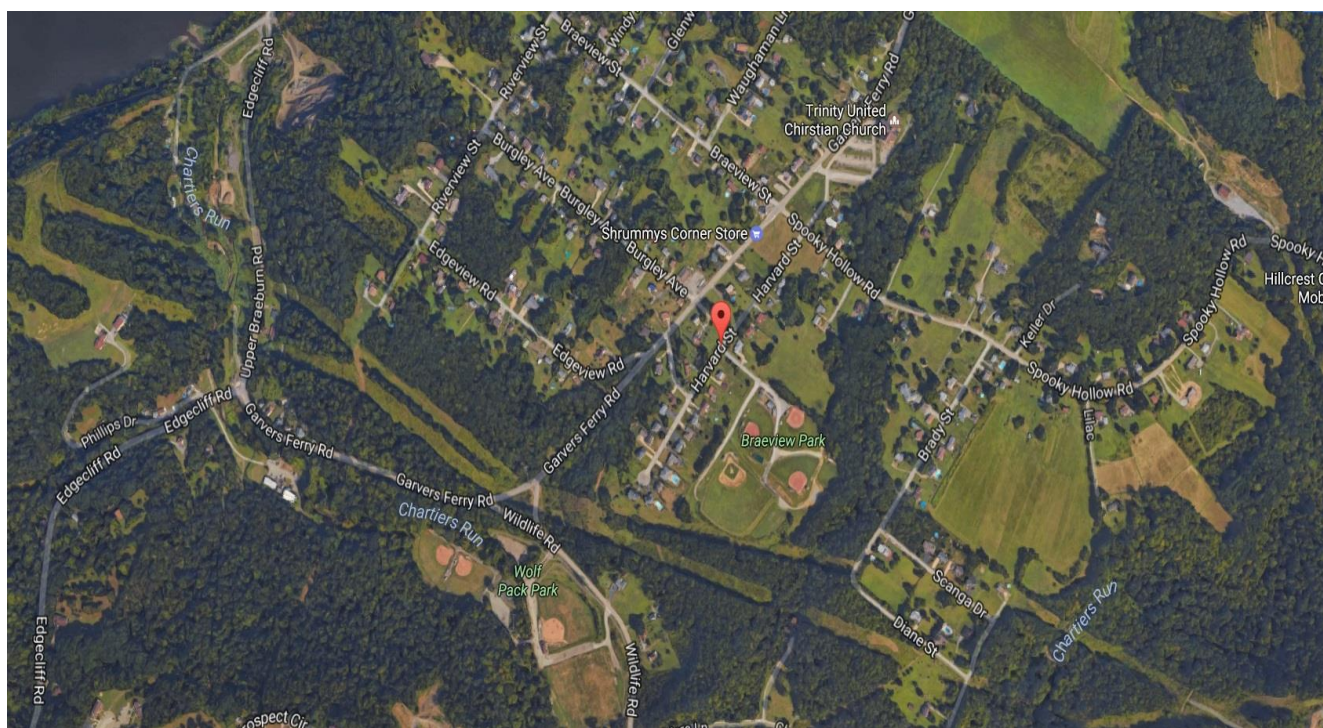
Field location is

ABC Ballfields (Field D) – (Braeview Park)

GPS = 40.599084,-79.712826

Typing "ABC Ballfields" in Google maps works but may not in other programs.

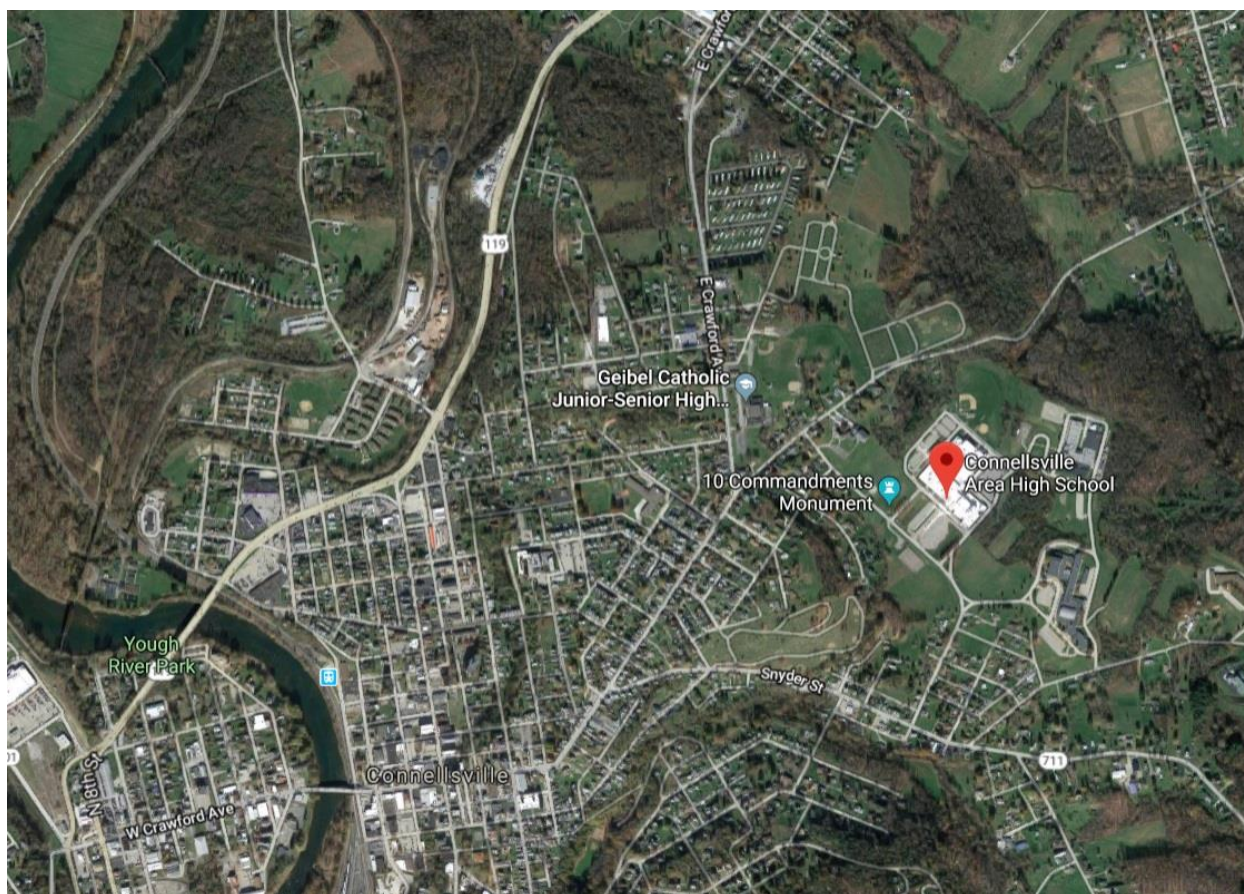
It's off of Harvard Street, Lower Burrell, PA 15068



WESTMORELAND COUNTY AMERICAN LEGION YOUTH BASEBALL 2019 – Field Directions

Connellsville

Connellsville High School
201 Falcon Drive
Connellsville PA 15425

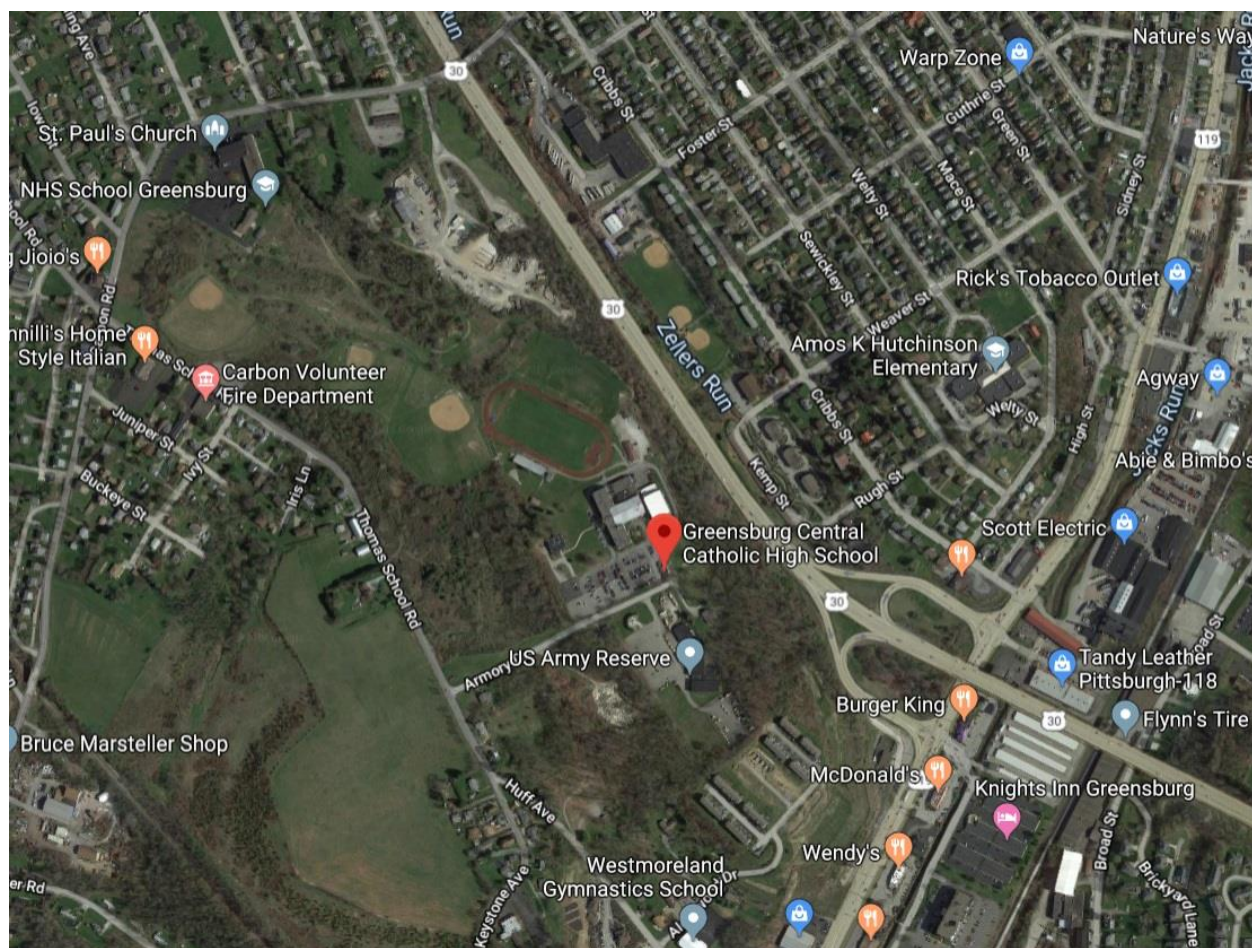


WESTMORELAND COUNTY AMERICAN LEGION YOUTH BASEBALL

2019 – Field Directions

Hempfield East

911 Armory Dr., Greensburg, PA 15601



WESTMORELAND COUNTY AMERICAN LEGION YOUTH BASEBALL

2019 – Field Directions

Jeannette

Directions to Clarkson Field (Jeannette)

Clarkson Field is located in West Jeannette at the intersection of 11th and Mapleton Streets. From Route 30, turn at the Park Diner (formally Eat'n Park) and follow Lowry Avenue to the bottom at DiMartino Ice, where the road bares left and turns into Division Street. Follow Division, staying left at the Y, until the stop sign in front of Antoniak's Market. Make a right at this stop sign. Follow through the stop sign to the bridge. Make a right over the bridge and follow to stop sign at Clarkson Field on the left. From route 130, follow until you come to the Domino's Pizza (approx. 1 mile east of Kistler's Par 3 and 1 mile west of Elliott Co.) turn at Domino's Pizza and continue to Manor House Kitchen warehouse where you must turn left. Continue to stop sign at West End Builder's Supply. Make a right onto 13th St. Continue on 13th until you come to "T". Make a left onto Mapleton, Clarkson Field on your right.



<http://www.leaguelineup.com/location.asp?sid=270681376&url=wjl&locationid=357315>

WESTMORELAND COUNTY AMERICAN LEGION YOUTH BASEBALL

2019 – Field Directions

Kiski Valley

100 Community Park Rd, Freeport, PA 16229

From intersection of Rt. 66 and Rt. 22

Go north on Rt. 66, bear left onto Rt 356 north.

Turn left onto Rt 356 / Rt 56

Turn right onto Rt 356

Turn right onto Rt 128

Turn right onto 2nd street

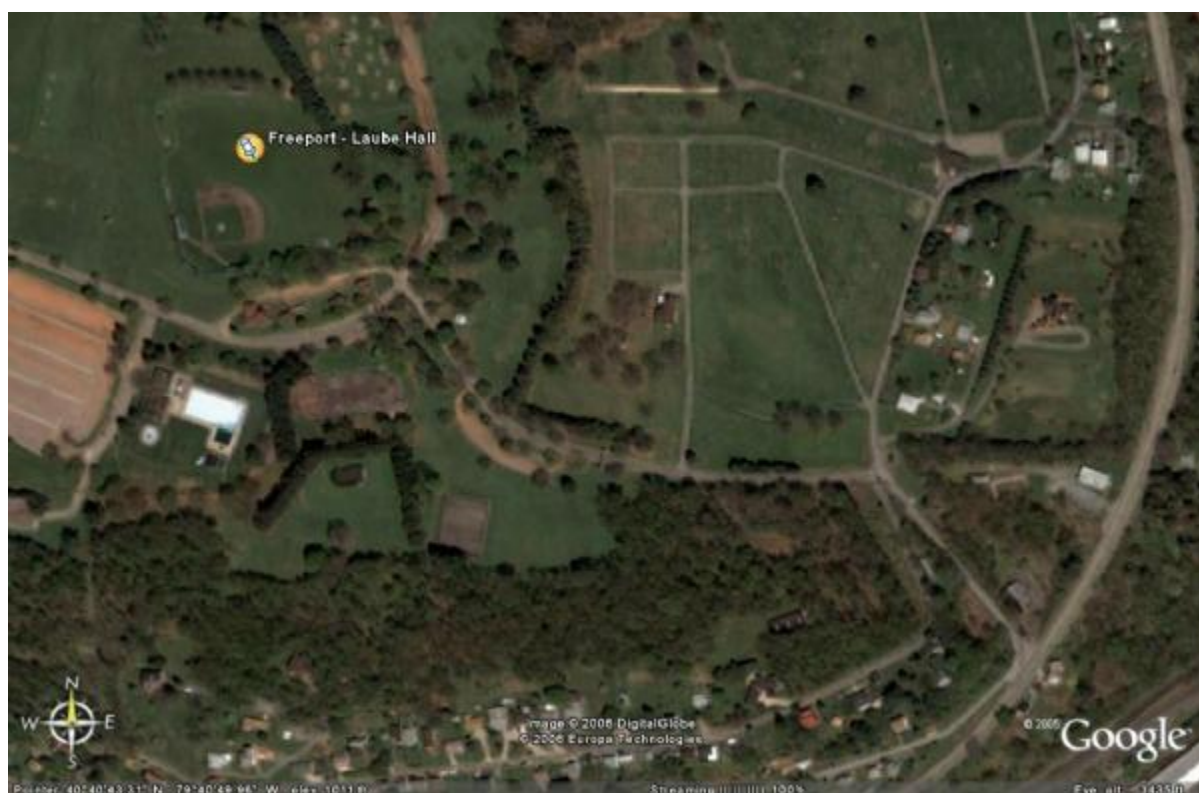
Turn left onto High St.

High St. becomes Freeport Rd / Rt. 128

Turn left onto Community Park Rd halfway up hill

Make next left (watch for Laube Hall sign) and proceed up hill and go straight at the final intersection into the parking lot of the field.

Legion field is at top of hill next to swimming pool.



Google Map Link:

<http://maps.google.com/maps?q=100+Community+Park+Road,+Freeport,+PA&hl=en&sl=37.0625,-95.677068&sspn=64.409204,135.263672&oq=100+community+road+free&t=h&hnear=100+Community+Park+Rd,+Freeport,+Pennsylvania+16229&z=17>

WESTMORELAND COUNTY AMERICAN LEGION YOUTH BASEBALL

2019 – Field Directions

Ligonier Valley

We will be playing all home games at the Ligonier Valley High School.

Address:

Ligonier Valley High School
40 Springer Road
Ligonier, Pa 15658

Directions:

Follow Route 30 East Past Idlewild Park

3.2 miles past Idlewild Park take the first exit into Ligonier on the LEFT side. This road will be West Main Street.

You will cross over Route 30 West and continue on West Main Street.

Take the Second Left onto Springer Road. (Notice the sign for Ligonier High School on the left)

The entrance to the school and parking will be the second right (approx 1/2 mile).

Field is along the road in front of the school.

****If you miss the first exit into Ligonier****

Past Idlewild Park and continue on 30 E.

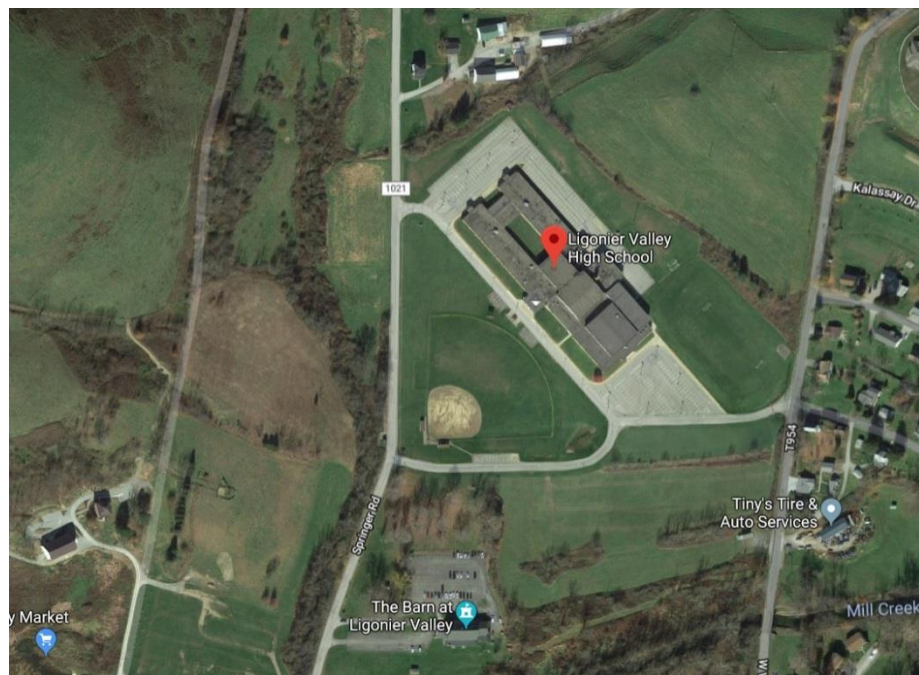
At the first Traffic Light in Ligonier, turn Left onto South Walnut Street.

(Giant Eagle Grocery Store visible on the left).

Turn Left at the First Stop Sign onto Main Street.

Pass beer distributor and old gas station on your right and cross over a small bridge.

Immediately after the bridge turn Right onto Springer Road, follow direction above to field.

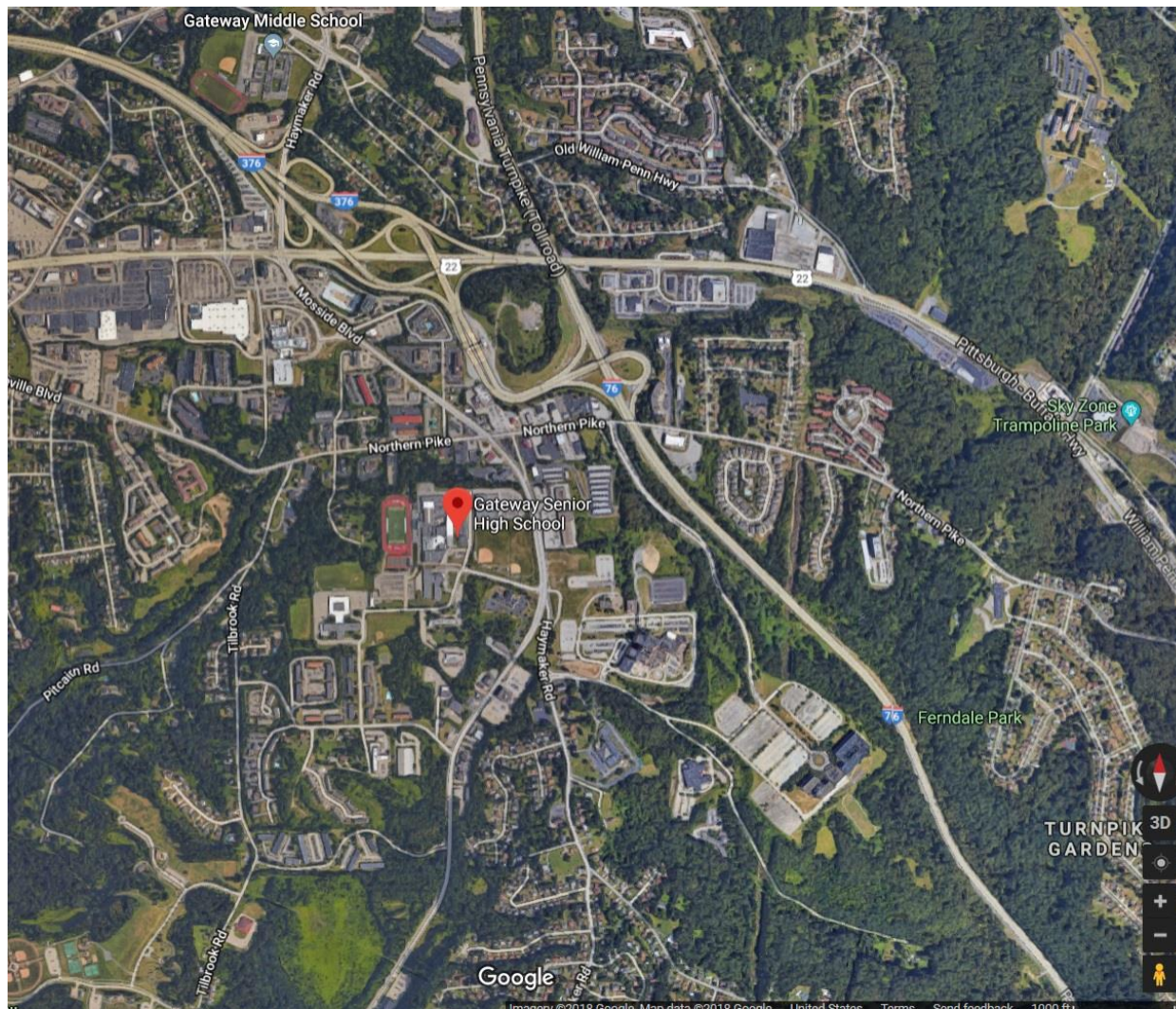


WESTMORELAND COUNTY AMERICAN LEGION YOUTH BASEBALL 2019 – Field Directions

Monroeville

Gateway High School

3000 Gateway Campus Blvd, Monroeville, PA



WESTMORELAND COUNTY AMERICAN LEGION YOUTH BASEBALL 2019 – Field Directions

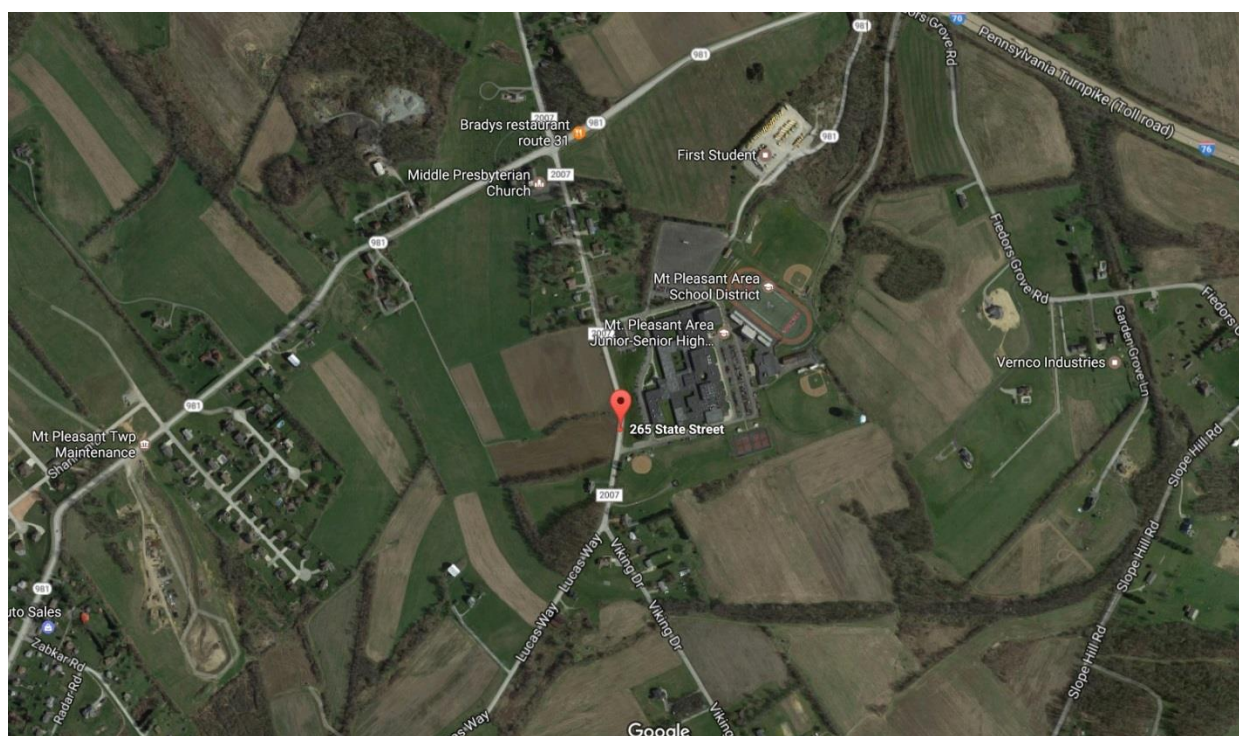
Mt. Pleasant

Mt. Pleasant Area Junior-Senior High School

265 State Street

Mount Pleasant, PA 15666

High school baseball field in the rear



<https://www.google.com/maps/place/265+State+St,+Mt+Pleasant,+PA+15666/@40.1738874,-79.5276961,1436m/data=!3m1!1e3!4m5!3m4!1s0x8834d7c5a4fb463f:0x4e3e790e10ceb44f!8m2!3d40.172922!4d-79.528527>

WESTMORELAND COUNTY AMERICAN LEGION YOUTH BASEBALL 2019 – Field Directions

Murrysville

Haymaker Park

If traveling Route 22 from east of Murrysville, Haymaker Park is approximately 7 miles west of the intersection of Route 66 and 22 in Delmont, Pa. Once past the large Sheetz store on the left, go approximately 1.5 miles until you see The Dairy Queen on your right. Turn left At the light (Gates St.) next to Bondi Printing Co. Haymaker Park Field will be behind Bondi Printing. Coming West from Monroeville and the intersection of the PA Turnpike exit 6 and Rte. 22; proceed East on 22. Go about 3 – 4 miles. You will pass a McDonald's on the left at the intersection of 22 and Vincent Hall Rd. Proceed through the light and turn right onto the 'Jug Handle turn-around'. Haymaker park is at the end of the jug handle.



<http://www.leaguelineup.com/location.asp?url=wjl&sid=460027007&locationid=357317>

WESTMORELAND COUNTY AMERICAN LEGION YOUTH BASEBALL 2019 – Field Directions

PAL

811 Bridge St, Irwin, PA 15642

ALL games are played on the Yellow/Gold field.
From PA Turnpike Exit #7.

Head West towards Pittsburgh. At the 3rd stop light make a right. Pizza Hut is right there. Go up the hill to the 2nd stop sign make a right then the first left onto Bridge St. Proceed to bottom of hill at stop sign go straight. Cross over bridge and the complex is on your left. There is additional parking in the back. There are signs posted.



<http://www.leaguelineup.com/location.asp?sid=460027007&url=wjl&locationid=357318>

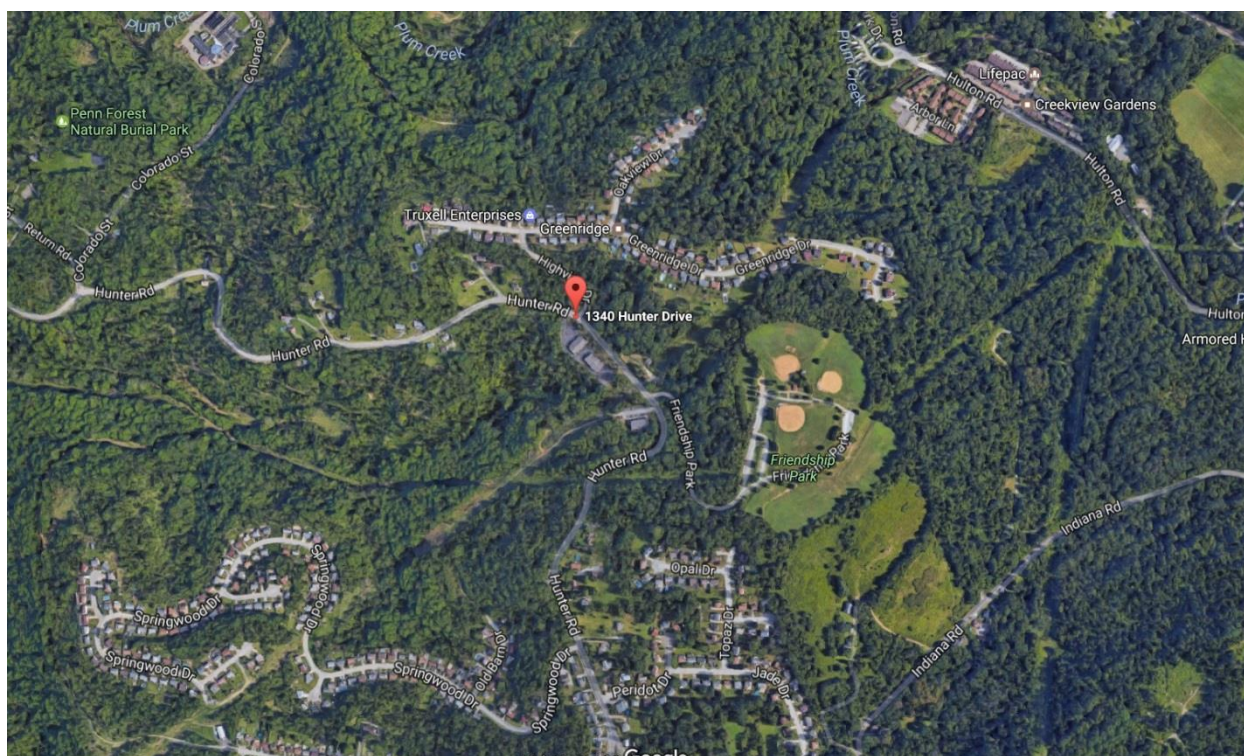
WESTMORELAND COUNTY AMERICAN LEGION YOUTH BASEBALL

2019 – Field Directions

Penn Hills

Friendship Park

<https://www.google.com/maps/place/1340+Hunter+Dr,+Verona,+PA+15147/@40.5098729,-79.8127234,17z/data=!4m2!3m1!1s0x883494b3664dde87:0x5336a676c7c55ab8>



**WESTMORELAND COUNTY AMERICAN LEGION YOUTH BASEBALL
2019 – Field Directions**

Penn Township

Field #5 – Penn Township Municipal Park

**2001 Municipal Ct
Harrison City, PA 15636**

<http://www.playptaa.com/Default.aspx?tabid=1048164> (Listing to all P.T. fields)

WESTMORELAND COUNTY AMERICAN LEGION YOUTH BASEBALL 2019 – Field Directions

Plum

Directions to Plum field Boro 6 at the PBSA Complex

The Eight Plum fields are located directly across the street from 4575 New Texas Road Plum Pa 15239. Make right turn onto Ross Hollow Road which is just past the first 4 fields. Go about 150 yards and take first right. Boro 6 is circled in red below and has a sign attached to the back stop.

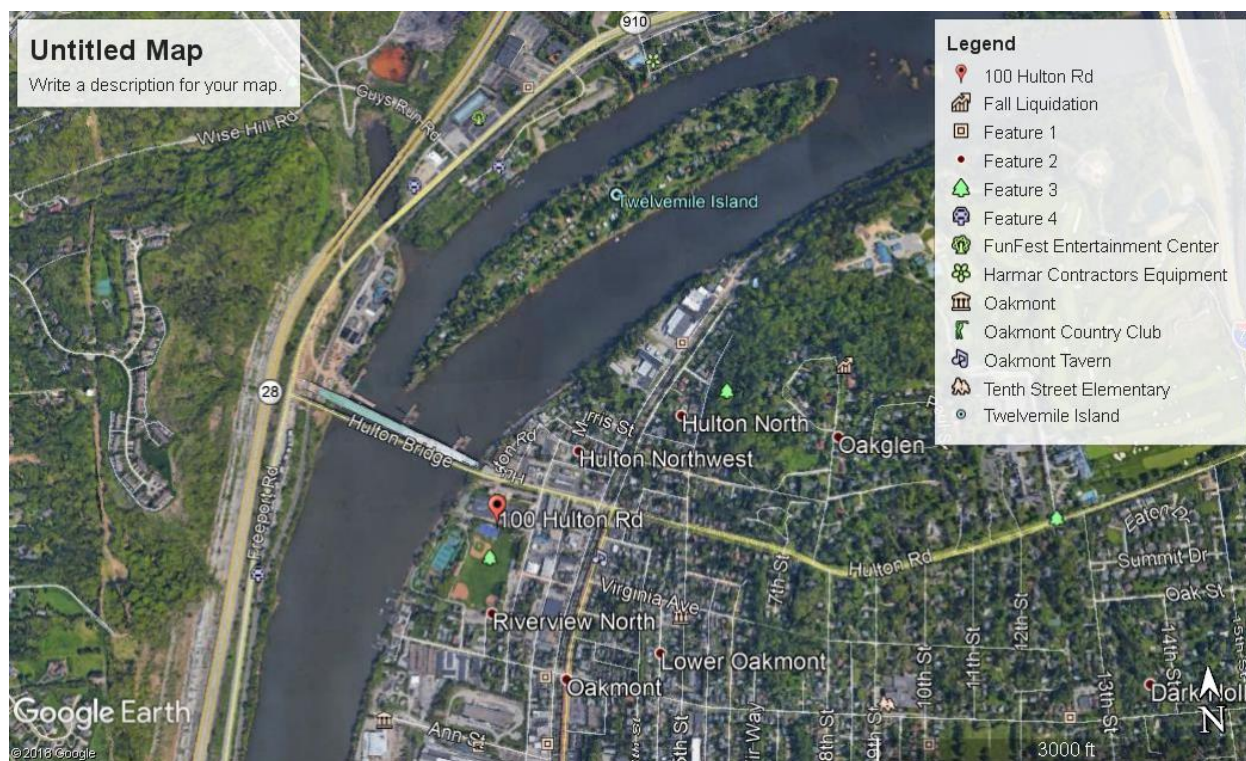


WESTMORELAND COUNTY AMERICAN LEGION YOUTH BASEBALL

2019 – Field Directions

Riverview

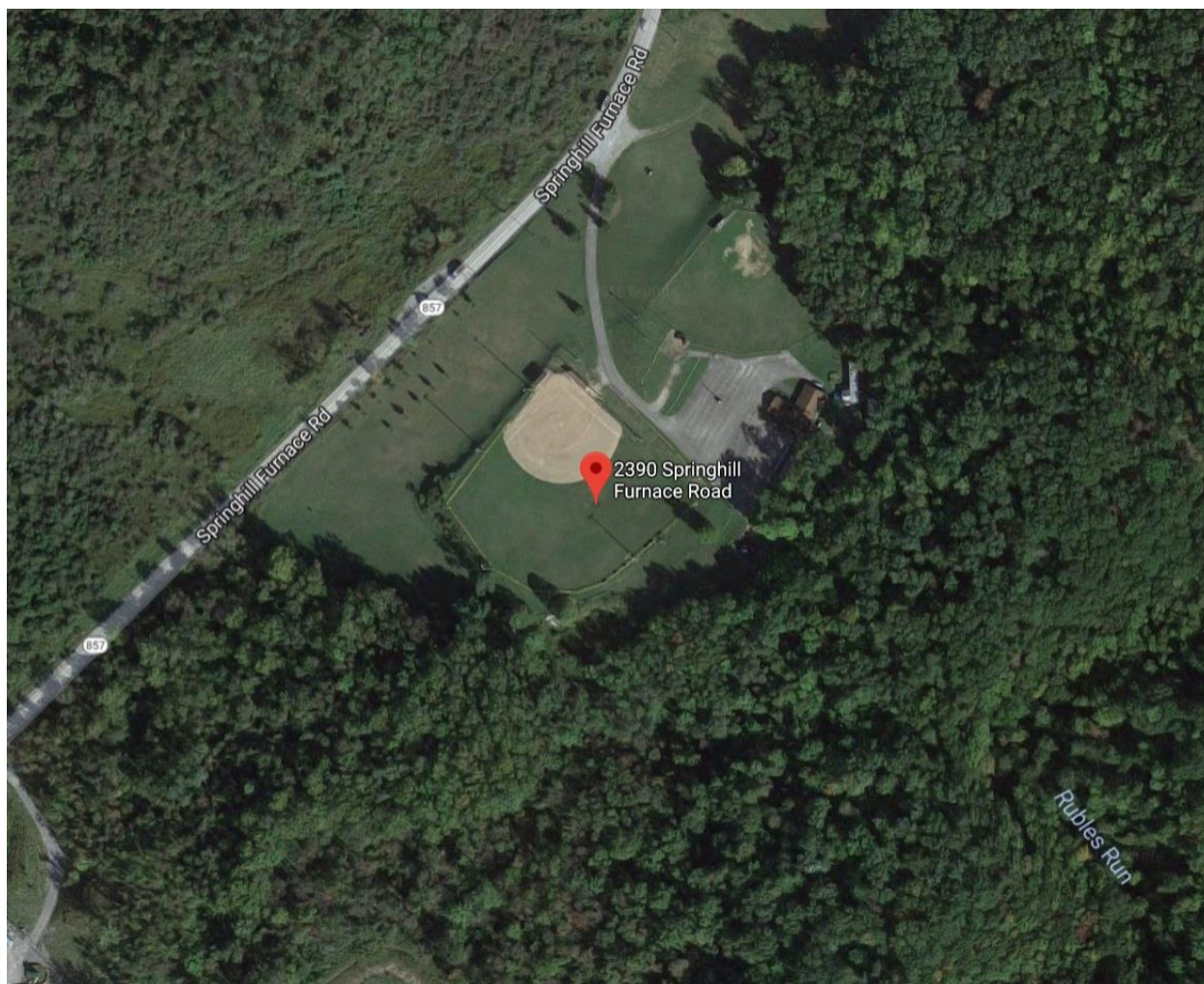
Riverview Jr/Sr High School
100 Hulton road
Oakmont, PA 15139
(park on 3rd street- field is behind high school)



WESTMORELAND COUNTY AMERICAN LEGION YOUTH BASEBALL 2019 – Field Directions

Smithfield

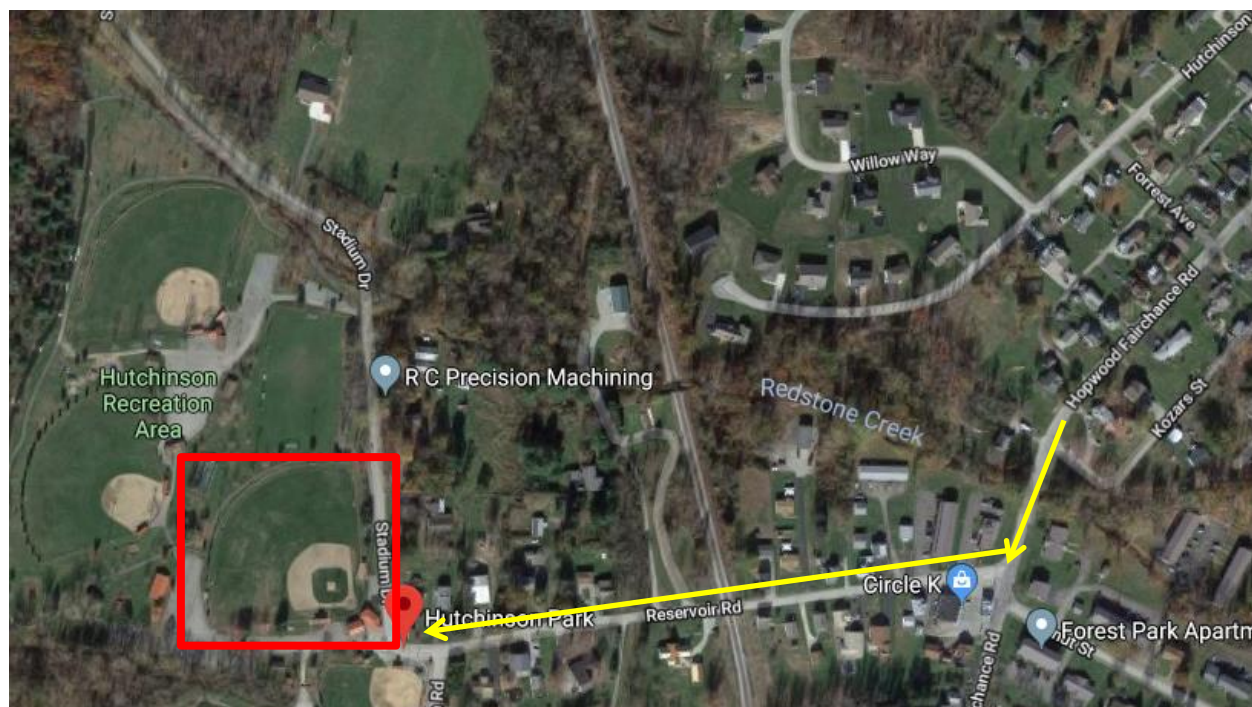
2390 SPRINGHILL FURNACE ROAD, SMITHFIELD, PA.15478
APPALACHIAN COMMUNITY CENTER



WESTMORELAND COUNTY AMERICAN LEGION YOUTH BASEBALL 2019 – Field Directions

Uniontown

Uniontown Legion Home Field – Hutchinson Park 65 Reservoir Road, Uniontown, PA 15401



<https://www.google.com/maps/place/Hutchinson+Park/@39.8669127,-79.7106647,1102m/data=!3m1!1e3!4m5!3m4!1s0x88353f93b7cfaf81:0xc164bf6338fdef4!8m2!3d39.8647284!4d-79.713397>

Traveling South into Uniontown, PA:

- Follow US-119 South
- Merge Left to stay towards US-40 East Hopwood for ~ 2 miles
- Take the US-40 BUS exit toward Hopwood (merge right under overpass, would be first exit once you get onto US-40 East towards Hopwood)
- At the light/intersection, turn Left onto Hopwood Fairchance Road
- Travel ~ 1 mile and turn Right onto Reservoir Road (Circle K Gas station)
- Stay straight on Reservoir Road and you'll run right into the Hutchinson Park baseball field complex; our field is the first field to your right by the concession stand/pavilions (Little League field would be to your left)
- You can proceed straight between the two fields and park anywhere to the left, behind the Little League field, near the basketball court, and down behind the Legion field
- HOME dugout is on the 3rd base line

WESTMORELAND COUNTY AMERICAN LEGION YOUTH BASEBALL

2019 – Field Directions

West Hempfield

Directions to Lint Field

GPS Address

N40 16.590

W079 41.244

Closest mailing address is

256 Tillbrook Rd

Irwin, PA 15642

From RT 136

Coming from Greensburg on RT 136 toward Herminie.

Proceed past Hempfield Area High School.

At the T make a left and remain on RT 136.

Proceed for several miles till you come to a 4-way stop sign in Arona.

Go straight through the 4-Way Stop Sign.

Proceed for 2 mile to next stop sign.

Go straight onto Darragh-Hermine Rd.

Proceed about $\frac{3}{4}$ mile and make a Right onto Tillbrook Rd.

Go up the hill and proceed about 1 mile.

Fields will appear on your left. Lint Field is located at the top of the hill.

Heading East to West from Greensburg:

- 1) Take Route 30 West through Jeannette towards Irwin
- 2) Pass Fun Party Stores and Shift Right
- 3) After Passing Shift Right, Merge into the Left Lane of Route 30
- 4) Pass US AutoMart on your Right in Adamsburg
- 5) At the Top of the Hills Make a Left onto Wendel Road (across from Kenny Ross Ford)
- 6) Travel .7 Miles to Stop Sign (Stone Bank). Continue Straight
- 7) Proceed .8 of a Mile to Next Stop Sign (You will pass Rodney's Restaurant, West Hempfield Elementary School, & Marathon Gas Station on your Left)
- 8) At Stop Sign Bear Left onto Bristol Lane
- 9) Travel .3 Miles to Next Stop Sign
- 10) Continue Straight onto Tillbrook Road
- 11) Travel 1.3 Miles
- 12) Field will be on Your Right
- 13) Lint Field is the Uppermost Field (Park Below the Field. DO NOT Park on the Driveway that Leads Up to the Field.

Note: If traveling Eastbound on Route 30 go to the first light (BP Gas Station) after the Turnpike Entrance and make a Right onto Arona Road. At the first Stop Sign Make a Right onto Wendel Road. Follow directions above beginning at #7.

http://www.whlegionbaseball.com/Field_Directions.htm