

PUBLIC AUCTION

Located at Duwa's Auction Building, 1½ mi West of Wellman, IA on Hwy 22

Saturday-June 22, 2019 - 9:00am

JOHN DEERE MI TRACTOR – JD GATOR - WALKER RIDING MOWER – AGRI-FAB MOW-N-VAC -

STANDARD RIDING LAWN TRACTOR – LAWN EQUIPMENT: John Deere MI, SN 10733, w/fenders, after-market 3 pt., extended rims, 13.00-24 rears; 2005 JD Gator HPX, 4x4, 820cc, 1094 hrs, w/ electric over hyd tilt bed; 1998 Walker Model MCSD-20 hp "one owner" mower w/400hrs on new 20hp engine (1312 orig hrs), dual rear wheels & weight, 54" gear driven deck; Agri-Fab H.D. 1000 mow-n-vac; Standard walk behind lawn tractor – converted to a riding tractor;



1950's receipt books; Ladies hats; Family Farm Barn board picture frames; Coca Cola wooden crate; Flower Garden, Lone Star & other



quilts; Pocket knives: Cash Feed & Produce & Graber Heating-Wellman, Hershberger's Mastermix-Kalona & others; Insulators; Rooster thread holder; Argus & Contina cameras; Keystone Model A-7, 16mm movie camera; Bell Howell movie projector; Rondini accordion; Carom board; Viewmaster viewer; Large variety of Blue Willow ware dinnerware & accessory pieces w/ teapots, Coffee, dinner & salad plates, bowls, platters, cup/saucers, cr/sugars, s/p, butter, etc pieces; Kerosene reg, mini & finger lamps; Milk glass pitcher/ glasses, bowls, cake plate, snack sets, etc; Cobalt mini lamps; Decorative blue jars/ bowls; Forest green salad plates, pitcher & glasses; Adv Picture/ therm: Kalona – Kepler Hardware, Miller & Bender Oil, Kalona Oil, East End Oil; Wellman – Graber Plumb & Heating, Maplecrest Turkey Farms; Joe Shima & Susan-Stanwood/ Tipton

ORDER OF SALE: Beginning w/ Household smalls, collectibles. 10:00am-2nd ring-hayracks of hand tools & shop equipment. 12:00 noon-Furniture. 12:30pm – Tractor, Gator, Lawn tractors, etc followed w/ guns.

4'x6' two wheel trailer; 26" – 4 wheeler harrow; Stihl FS56RC weed eater; Snapper & Homelite weed trimmers; Homelite leaf blower; 14 gal Finco ATV sprayer; Toro 3 hp snow blower; 38" Craftsman lawn sweep; Grass seeder w/ electric motor; 2 wheel yard buggy; Honda GXV270 gas motor w/vertical shaft-NOS; Pole tree trimmer; 1"X8" rough sawn white oak lumber; 8'x8' vented garden canopy; 6 burner gas camping grill; Igloo 12 volt cooler; Patio furniture; Wheel barrow; Bird bath; Alum softball bats; Croquet set; Chairs; Bird houses; Camp lantern; Roll of wire & cable

WALKER TURNER WOOD LATHE – TOYOTA ENGINE - SHOP

TOOLS: Walker-turner 34" wood lathe w/ stand & tooling; Toyota VVT-I 16 valve engine; Wood band saw; DeWalt drill; Jonsered 670 Champ chain saw w/23" bar; 2 - 24 drawer metal parts bin units; 10½" aluminum telescoping extension ladder; Little Jumbo alum. folding step ladder; Collapsible alum fire escape ladder; Power Pro battery charger; Coleman air hammer; Bostitch coil framing nailer; Nails; 2 – Bosch sawzalls; Central Pneumatic air hammer; Bosch plunge router; Bosch planer; DeVilbiss & Duo-Fast air staplers; Bolt cutters; 2T floor jack; Craftsman circular saw; 47 piece drill bit set; B&D circular saw; Bosch, DeWalt & Hitachi cordless drills; Chicago oscillating ele. & other sanders; Mall & Skil sanders; Milwaukee & other electric drills; Delta scroll saw & router; Miter saw; Digital clamp multimeter; 20T bottle jack; Valve seat grinder; B&D drill; 15x45x40 Focal telescope on stand; TS ½" & other

socket sets; Empire magnum & laser levels; Drop cords; gas cans; Tool boxes; Wooden step ladder; Alum ladder jacks; Post drivers; Fence stretchers; Log chains; Axes; Pruning shears; Squares; Pliers; Vise grips & misc hand tools; Ratchet straps; Halogen work lights; Construction/ carpenter belts; Tractor umbrella; Hand steel post puller; Milk crates; Brooms; Rakes; Air hose; Car vac

GUNS – ANTIQUE COLLECTIBLE HAND GUNS: The following rifles are all semi-automatic: Browning BAR (Made in Belgium) 30-06 w/ Simmons Scope, Browning (Made in Belgium) 22 long, Interarms Model 22 ATD 22 cal, Marlin Model 60-22 cal, Remington Model 522 Viper 22 cal, Mossberg Model 340-22 cal; Winchester Model 97, 12 gauge; U.S. Springfield trapdoor muzzle rifle; Crossman Model 140-22 cal rifle; **Collectible hand guns: Revolvers** – Ruger (new model) Super Blackhawk 44 magnum, H&R 22 Special 7 shot, Iver Johnsons Arms & Cycle Works 32 cal, Harrington & Richardson 7 shot, Belgium 44 F.D.C., U.S. 22 cal, Hopkins & Allen 5 shot, Protector 5 shot; **Pistols** – E.L.G. 45 cal double barrel side by side, Garter 32 cal w/ tapered barrel, Garter 32 cal., Brass 90 cal (stamped L.E.G.) single shot w/ interchangeable barrel, Remington Arms 40 cal? Over & under, Allen 32 cal; 25th Anniversary Crossman 760 Pumpmaster air rifle; Crossman Model AA-II BB pistol; **Ammo:** Ultramax 44 magnum, Winchester 410, Smith & Wesson 44 specials, Remington High Velocity hollow point 22 golden bullets

JD & IH WATER COOLED ENGINES – 150# ANVIL – HAY CARRIERS –

COOKING KETTLE – TIN SIGNS: JD 1½ hp water cooled engine w/ igniter ignition; IH Type LB 1½-2½ hp water cooled engine; Vulcan 150# anvil; Unique anvil Hardie; 1878 Linwood No 25 cast iron parlor heating stove; Cast iron cooker kettle w/ stand; Wooden 80 pigeon hole receipt holder; Early tin green bath tub; Galvanized 4 legged footed bath tub; 25"x49" Kerosene Electrolux Refrigerator tin sign; Lumber & Building Mat'l metal sign; Louden & Myers hay carriers

PRIMITIVES – COLLECTIBLES – COLLECTION OF BLUE WILLOW

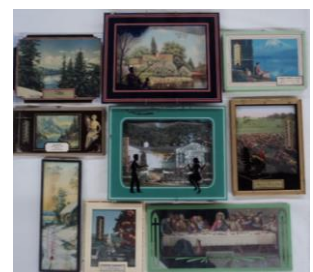
wooden pulleys; Early hand crank vacuum; Ruud No 25 hot water heater tank; Flexible Flyer & American Clipper sleds; Large rough pine drafting printers cabinet; Cast iron grates & floor registers; Chicken water; Socony Vac 5 gal can; Sprinkling can; Wire egg basket; 2- Porcelain 7"x6" Contains Lead-pump signs; Moose horns; Tub claw feet; IH electric control bulldozer; 5 gal Ruckles crock; 1 gal jug; Salt glazed crocks w/ damage; Pickle jar; Stella Cheese Co cream can; Steam pressure gauges; Telescope; Lightning rods; Cow bell; Firestone spark plug boxes; Red tool tote; Wooden survey tool; 1 man saws; Door hdwe; Kerosene flares; Stove flues; New wooden wheel; Gas torches; Soldering irons; Cow kickers; Griswold skillets #4-12; No 1, 2 & 3 cast iron skillets; Riley Bros oil tins; Machete; Imp Antifreeze tin; Wellman Coop Creamery

1950's receipt books; Ladies hats; Family Farm Barn board picture frames; Coca Cola wooden crate; Flower Garden, Lone Star & other quilts; Pocket knives: Cash Feed & Produce & Graber Heating-Wellman, Hershberger's Mastermix-Kalona & others; Insulators; Rooster thread holder; Argus & Contina cameras; Keystone Model A-7, 16mm movie camera; Bell Howell movie projector; Rondini accordion; Carom board; Viewmaster viewer; Large variety of Blue Willow ware dinnerware & accessory pieces w/ teapots, Coffee, dinner & salad plates, bowls, platters, cup/saucers, cr/sugars, s/p, butter, etc pieces; Kerosene reg, mini & finger lamps; Milk glass pitcher/ glasses, bowls, cake plate, snack sets, etc; Cobalt mini lamps; Decorative blue jars/ bowls; Forest green salad plates, pitcher & glasses; Adv Picture/ therm: Kalona – Kepler Hardware, Miller & Bender Oil, Kalona Oil, East End Oil; Wellman – Graber Plumb & Heating, Maplecrest Turkey Farms; Joe Shima & Susan-Stanwood/ Tipton

APPLIANCES – FURNITURE: GE Hydro wave washer & electric dryer; GE apartment size refrigerator; Maple dining table w/ leaf & 5 chairs; Oak dining table w/ 6 chairs; Large mahogany step back china hutch; Tan striped couch & loveseat; Maple Deacon's bench; 3 piece Blonde oak bedroom set w/full bed; Single bed; Pine bench; Mahogany dresser; Old desk; Oak coffee table; Oak computer desk; 3-5drawer file cabinets; 5.5" Port TV; Sewing machine cabinet; Metal folding chairs; Wicker patio chair; High chairs; Weslo Cadence tread mill; Total Body Elliptical

KITCHEN & HOUSEHOLD: Hamilton Beach electric roaster; Crockpot; Roasters; Pressure cooker; Popcorn popper; Coffee makers; George Foreman; Toaster oven; Baking dishes; Correlleware; Utensils; Silverware; Coolers; Glass bowls/ platters; 10x50 Tasco & Simmons binoculars; Globe; My Bookhouse children's books; Plastic trucks; Assorted pictures w/ children & roses; 3 way indoor/ outdoor speakers; Assorted cable & other lights; Brass compass; TerraDek lights; 8 track car stereo; Books: Cookbooks, Classics of the Road, American Farm Tractor – JD, Bird books, etc; Assorted linens

ORDER OF SALE: Beginning w/ Household smalls, collectibles. 10:00am-2nd ring-hayracks of hand tools & shop equipment. 12:00 noon-Furniture. 12:30pm – Tractor, Gator, Lawn tractors, etc followed w/ guns.



LYNN & RUTH GRABER: owners

Auctioneers: Dwight Duwa 319-646-6775 Jeff Wille Web: duwasauction.com

Terms: Cash or ck w/ ID Lunch-Liberty Hill Catering Not responsible for accidents or theft