

19 87

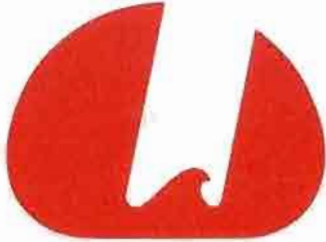
AVION

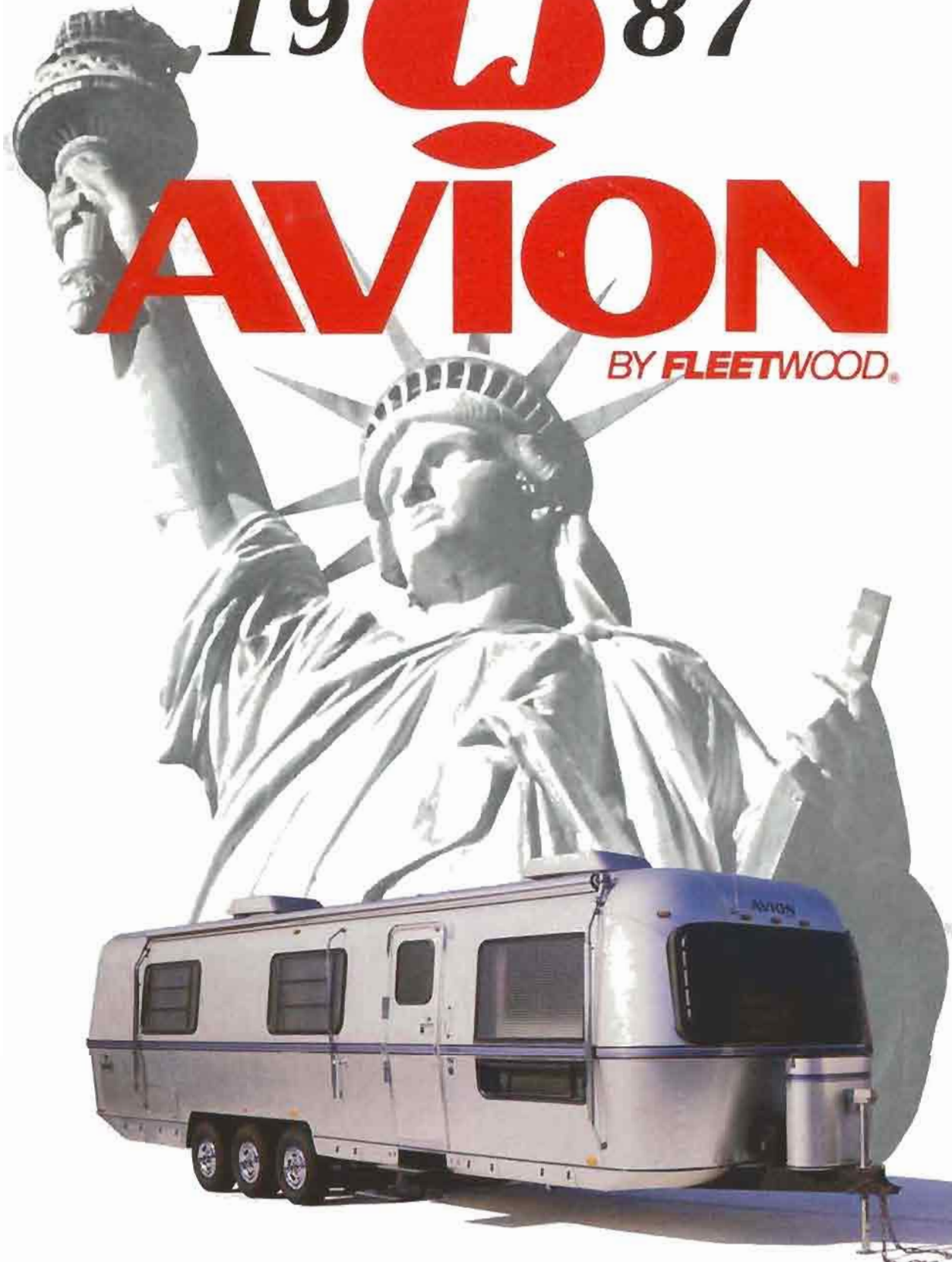
BY FLEETWOOD



America's Finest Travel Trailer



19  87



AVION

BY FLEETWOOD.

America's Finest Travel Trailer





Depending upon the model, Avion travel trailers are available with double, queen or twin beds as shown. The Seely® mattress is standard equipment.



The front overhead cabinet contains the AM/FM/Cassette stereo tuner. The tuner is equipped with "seek and scan" and is all electronic. Four 2-way speakers are included in the sound system. Cassette tape library trays are spring loaded for safe tape storage.



Abundant functional storage is found throughout the Avion. From the large wardrobes, overhead cabinets and storage beneath convertible furnishings, you travel comfortably equipped. Develco construction reflects the craftsmanship found within like residential cabinetry; drawers are sealed with smooth, and sealed.



Avion's galley reflects careful planning with the largest overhead storage cabinets. The double bowl residential quality porcelain sink is equipped with single mix faucet plus purified fresh water dispenser faucet. Highly convenient Magic Chef® electronic "Touch Control" microwave oven and 4-burner range/oven, provide all of the cooking versatility needed. (The microwave is optional in Model 25H. Also, the purified water system is not available in Model 25H.)



An all-aluminum LPG tank cover protects the LP tanks from road hazards. The large ABS top allows for quick inspection of the actual gas reserve gauge. For Model 25H, see option listing, page 7.

**WELCOME ABOARD TO
AVION CLASS TRAVEL**



You'll find total comfort while seated on the 5" thick Superfoam cushions. Upholstery is Scotchgard® protected for durability and easy maintenance. Beneath each seat, a generous storage compartment for less frequently used items. New Flex-O-Later springs and hardware provide residential comfort plus 2 position seating for dining or relaxing. A convenient two pocket/magazine rack is included in dinette models.



The TV table is designed for the contemporary portable TV. The shelf recesses out of the way when not in use (in select models). TV antenna and wiring for the park cable TV coaxial cable is standard.



Avion's monitor panel contains a 12 Volt disconnect switch to power down all 12V circuits when not in use. Other features include analog clock, LP gas receiver, battery condition, barometer, thermometer and hygrometer (humidity).



Step aboard on Avion's durable vinyl double step that has rounded corners and non-slip edges for your personal safety. Convertible night lights are also included.



The bath vanity countertop is covered with self-edged high impact marble finish laminate for durability and elegance. A residential quality single-max faucet is standard.



All Avion models are equipped with a large tub/shower for personal vanity time and comfort. A cast-in shower seat is included.

1987 Avion furnishings feature select materials made with HERCULON® Clear Floor for soil resistance, easy cleaning and durability.

HERCULON
The Champion of Choice



Full timing? Retiring? Want the most sought after vacation home on the road today? The Avion travel trailer by Fleetwood offers the quality, durability and luxury you desire for you and your family.

Avion's living room features deluxe, highly durable furnishings for personal comfort and lasting style. Tasteful front storage cabinets and overhead shelving complete the residential feeling. New for 1987 — living room picture window in most models.

AVION MODEL SELECTIONS

The 1987 Avion travel trailer is offered in six models ranging in size from the surprisingly economical Model 25H to the impressive thirty-four foot models.



MODEL 25H

Avion quality and economy combine in this smaller model to provide fun-filled vacations. **HIGHLIGHTS** — private rear bedroom, large bath, comfortable guest seating or family dining up front. Options (1) double bed (2) dinette.



MODEL 30F

This mid-size model offers excellent living characteristics and livability. **HIGHLIGHTS** — front living room also offers very comfortable dining as well as guest sleeping capability. Rear bath and corner bed room can be made totally private. Note the abundant wardrobe space in the bath. Options (1) double bed (2) front Magic Bed®.

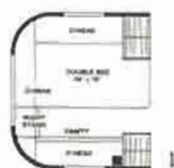


MODEL 32S

A new model offering numerous power benefits. **HIGHLIGHTS** — corner living room offers "at home" welcome to friends. Front galley and dinette provides for private dining or separate entertaining. Bath and bedroom can be made totally private with the sliding wooden door. Options (1) double bed.

AVION MODEL SELECTIONS

The 1987 Avion travel trailer is offered in five models ranging in size from the surprisingly economical Model 25H to the impressive thirty-four foot models.



MODEL 25H

Avion quality and economy combine in this smaller model to provide fun-filled vacations. HIGHLIGHTS — private rear bedroom, large bath, comfortable guest seating or family dining up front. Options (1) double bed (2) dinette.



MODEL 30P

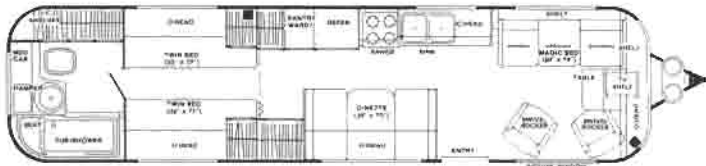
This mid-size model offers excellent towing characteristics and livability. HIGHLIGHTS — front living room also offers very comfortable dining as well as guest sleeping capability. Rear bath and center bedroom can be made totally private. Note the abundant wardrobe space in the bath. Options (1) double bed (2) front Magic Bed®.

1987 Avion



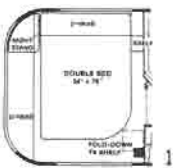
MODEL 32S

A new model offering numerous owner benefits. **HIGHLIGHTS** — center living room offers "at home" welcome to friends. Front galley and dinette provides for private dining or separate entertaining. Bath and bedroom can be made totally private with the folding, wooden door. Option (1) double bed.



MODEL 34V

This traditional plan offers three distinct living areas. **HIGHLIGHTS** — the Magic Bed® converts for guest and family sleeping. The living room can be made night-time private with the folding wooden door. Abundant wardrobe storage is found throughout. Options (1) double bed (2) front Magic Bed®.



MODEL 34W

The flagship model offers four distinct living areas for the family. **HIGHLIGHTS** — large, convenient center wardrobe facility plus twin folding wooden doors outside the bath to create a private dressing area. Options (1) double bed (2) front Magic Bed®.



25H 30P 32S 34V 34W

Weights, Measures

Length, including hitch	25'10"	30'1"	32'7"	34'11"	34'11"
Width	7'11"	7'11"	7'11"	7'11"	7'11"
Height (including roof air)	10'0"	10'0"	10'0"	10'0"	10'0"
GVWR - lbs.	7,000	8,550	8,550	9,500	9,500
Gross dry weight - lbs.	4,975	5,840	6,100	7,085	6,875
Hitch dry weight - lbs.	725	630	730	765	720

Seating/Sleeping

Sleeping capacity	4	4	6	6	6
Dinette bed size	—	—	38x72	38x72	38x72
Sofa bed size	46x75	—	46x75	—	—
Twin bed size — Sealy®	32x76	32x77	32x76	32x77	32x76
Double bed size — Sealy® (optional)	54x76	48x77	54x76	48x77	54x76
Magic Bed®	—	•	—	•	•

Galley

Refer & 2-way LP/110V (size)	Med.	Lge.	Lge.	Lge.	Lge.
Range — DLX 4 brnr w/lg. oven & light	•*	•	•	•	•
Microwave oven	—	•	•	•	•
Range hood (power)	•	•	•	•	•
Sink — porcelain 18" x 32"	•	•	•	•	•
Delta® single lever faucet	•	•	•	•	•
Galley top — laminate w/hardwood edge	•	•	•	•	•
Everpure™ water purifier	—	•	•	•	•
Sink cover — hardwood (2)	•	•	•	•	•
Galley window w/mini blind	•	•	•	•	•
Spice cabinet	•	•	•	•	•
Pull-out towel bar	•	•	—	•	•
Spice rack (2)	•	•	•	•	•
Range cover — stainless steel	•	•	•	•	•

Bath

Tub with seat	•	•	•	•	•
Sink (porcelain)	•	•	•	•	•
Telephone shower head w/shut-off	•	•	•	•	•
Toilet marine (w/water saver)	—	•	•	•	•
Lighted brass medicine cabinet	•	•	•	•	•
Mirrored doors	—	•	—	•	—
Shower curtain	•	•	•	•	•
Towel bar and ring	•	•	•	•	•
Bath window w/mini blind	•	•	•	•	•
Hamper w/removable laundry bag	•	•	•	•	•

Storage

Pantry (w/slide-out bins)	—	•	•	•	•
Cabinet door — hollow core — Birch	•	•	•	•	•
Hinges w/struts (overhead)	•	•	•	•	•
Positive catches	•	•	•	•	•
Wooden drawers w/Accuride slides and friction travel lock	•	•	•	•	•
Dovetail drawer construction	•	•	•	•	•
Mortise and tenon cabinet construction	•	•	•	•	•
Cedar lined wards	—	•	•	•	•
Wardrobe w/shelf	•	•	•	•	•
Dinette base storage area	—	—	•	•	•
Dinette magazine rack	—	—	•	•	•
Sofa base storage area	•	•	•	•	•
Exterior trunk and door	•	•	•	•	•
Below floor storage (exterior)	•	•	•	•	•

* — w/o oven light

Specifications & Equipment

	25H	30P	32S	34V	34W
Electrical					
Dual 12V battery container	•	•	•	•	•
45 amp power center — 110V/12V w/corv.	•	•	•	•	•
Utility compartment 110V outlet	•	•	•	•	•
30' heavy duty 110V shore line	•	•	•	•	•
Switch controlled lighting	•	•	•	•	•
Monitor panel with 12V kill switch	•	•	•	•	•
Walkway night lights	—	•	•	•	•
Decorative lights — wall mount 12V	—	—	•	—	•
Braund TV, antenna**	•	•	•	•	•
Park antenna	•	•	•	•	•
AM/FM stereo w/two-way speakers	•	•	•	•	•
Back-up lights	•	•	•	•	•
12V porch light	•	•	•	•	•
12V interior entry light	•	•	•	•	•
Ward lights	—	•	•	•	•
Telephone jack	—	•	•	•	•
Water/Drain System					
Fresh water capacity (gals.)	40	65	65	65	65
Waste water capacity (gals.)	40	40	40	40	40
Grey water capacity (gals.)	30	30	30	30	30
12V demand water system	•	•	•	•	•
Electronic ignition water heater (gals.)	6	6	6	6	6
Water tank by-pass fill	•	•	•	•	•
Adjustable water regulator	•	•	•	•	•
Galley faucet w/hand sprayer	—	•	•	•	•
Heating/Ventilation					
Ducted furnace w/thermostat (BTU)	24M	30M	34M	34M	34M
Residential ducting	•	•	•	•	•
Radius torque windows — tinted safety glass	•	•	•	•	•
Hammond power roof vents — 2-speed (qty.)	2	3	3	3	3
Roof A/C (BTU)	13.5	—	—	—	—
Roof A/C w/heat strip	—	13.5	13.5	13.5	13.5
Picture window in living room	—	•	•	•	•
Safety					
Fire extinguisher	•	•	•	•	•
GFI protection	•	•	•	•	•
Emergency egress	•	•	•	•	•
Radius corner countertops	•	•	•	•	•
Radius corners on entry steps and rockguard	•	•	•	•	•
Dead bolt lock	•	•	•	•	•
Flush door latch	•	•	•	•	•
Entry assist handle	•	•	•	•	•
Galley top side splash	—	•	—	•	•
Upholstered dinettes	—	—	•	•	•
Interior					
Flex-o-lator dinette seating	—	—	•	•	•
Heavy vinyl walls	•	•	•	•	•
5" Dacron wrapped cushions	•	•	•	•	•
Lined drapery w/pull shades	•	•	•	•	•
Drapery valances	•	•	•	•	•
Carpet (removable)	•	•	•	•	•
All wood cabinets	•	•	•	•	•

** — Jacks in bedroom and living room

	25H	30P	32S	34V	34W
Interior (continued)					
Folding room dividers (bedroom/hall only)	•	•	•	•	•
Free standing chair (qty)	—	2	1	2	2
Sealy® mattress w/bedspreads & pillow shams	•	•	•	•	•
Exterior					
Anodized aluminum skin	•	•	•	•	•
Adjust-A-Ride® suspension	•	•	•	•	•
Heavy duty rear bumper	•	•	•	•	•
Steel wheels w/covers	•	•	•	•	•
"Thermo-X" insulation	•	•	•	•	•
Electric brakes — all wheels	•	•	•	•	•
Insulated sandwich subfloor	•	•	•	•	•
Stabilizing jacks front/rear	•	•	•	•	•
12V power hitch jack	—	•	•	•	•
Dual LPG tanks — aluminum w/sight gauge (lbs.)	30	40	40	40	40
LPG bottle cover	—	•	•	•	•
2" x 6" tubular steel chassis ¹	—	•	•	•	•
2" x 5" tubular steel chassis ²	•	—	—	—	—

Options

016 Transit front wrap w/snaps	•	•	•	•	•
021 Side awning	•	•	•	•	•
022 Window awning	•	•	•	•	•
029 12V power jack	•	—	—	—	—
106 Refer LP/electric 110V (lge-dbl. dr.)	•	—	—	—	—
122 Microwave oven	•	—	—	—	—
139 Portable Dometic® vacuum cleaner	•	•	•	•	•
231 Dual roof A/C w/heat strips Front 13.5 BTU — Rear 11 BTU	—	•	•	•	•
500 Dual LP tanks w/sight gauge (40 lb.)	•	—	—	—	—
518 LPG bottle cover (for 40 lb. tanks)	•	—	—	—	—
700 Deluxe aluminum wheels	—	•	•	•	•
709 Spare tire	•	—	—	—	—
800 Front Magic Bed®	•	•	—	•	•
832 Front dinette	•	—	—	—	—
845 Double bed	•	•	—	•	—
847 Island double bed	—	—	•	—	•

¹Includes additional 2" x 4" tubular steel reinforcement at load bearing points.

²Includes additional 2" x 5" tubular steel reinforcement at load bearing points.

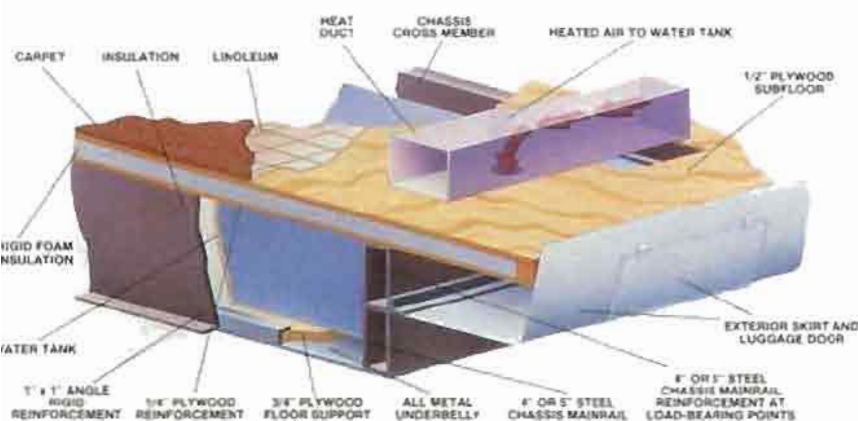
Product information and photography included in this brochure was as accurate as possible at the time of publication. Subsequent refinements may be evident in the actual product. Prices and specifications are subject to change without notice. Selected decorator items shown in the photographs are not part of the product unless specified. All fuel and liquid capacities are approximate and dimensions are nominal.

Ownercare Warranty

Avion travel trailers are protected by a full, one-year Ownercare Warranty. It is Fleetwood's commitment to owner satisfaction. Your Avion dealer has complete details.



Avion Hidden Features



Floor Construction

Floor construction assures the strength, durability, and convenience you expect from Avion. All water and essential plumbing lines are contained within the floor and protected by the full length all metal underbelly.

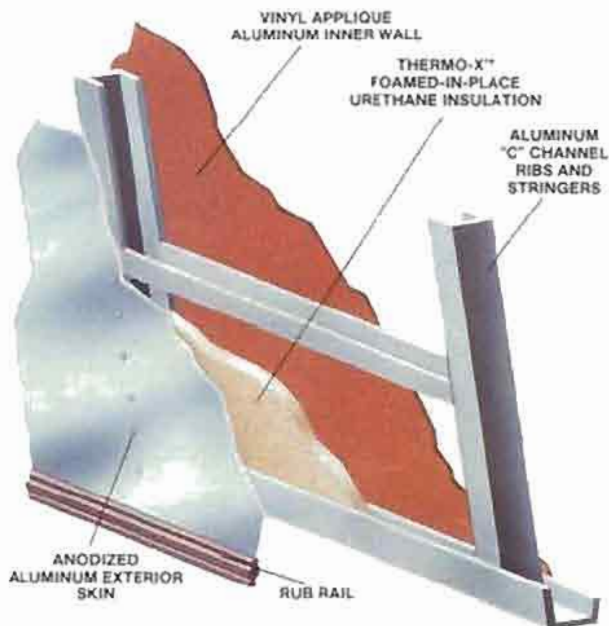


Adjust-A-Ride Suspension

Introduced in February 1980, this exclusive suspension system absorbs the "G" forces created by irregular roads. Each wheel has its own axle, spring and shock absorber. Adjust-A-Ride offers more protection for personal goods and provides effortless, smooth towing.

Avion Travel Trailers are manufactured by this subsidiary of Fleetwood Enterprises, Inc.

Avion Coach Corporation
1300 E. Empire Avenue
Benton Harbor, Michigan 49022



Wall Construction

In line with traditional aircraft construction, Avion's inner aluminum wall and outer aluminum skin is supported by aluminum ribs and stringers. The Thermo-X™ insulation is foamed in place and creates uniform thermal and sound insulation throughout.

International Travel Club

Membership in the Avion International Travelcade Club is available to all Avion owners. Highlights include professionally planned Travelcades, three International Rendezvous as well as State Unit Rallies. The club offers the ideal opportunity to make new friends and enjoy the comraderie found with Avion ownership. For complete details, contact:

Executive Secretary
Avion Travelcade Club, Box 236
DeBary, Florida 32713

Your Local Avion Dealer Is:

AVION

FLEETWOOD®

FLEETWOOD ENTERPRISES, INC.

P.O. Box 7638
Riverside, California 92523
The Official Travel Trailer at Fort Wilderness
Campground at the Walt Disney World® Resort.