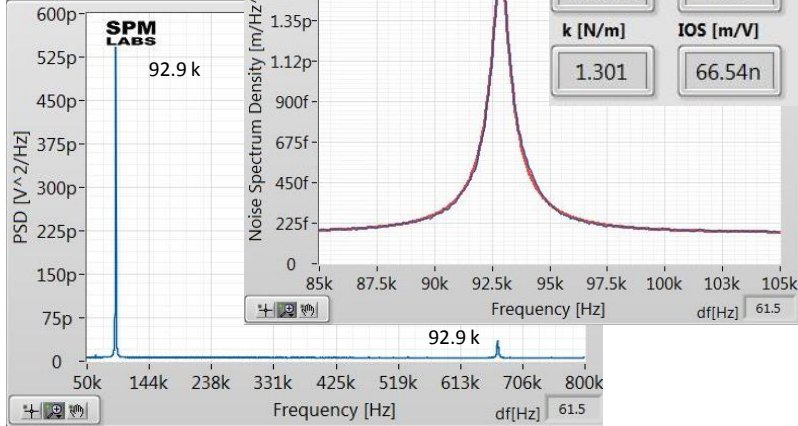
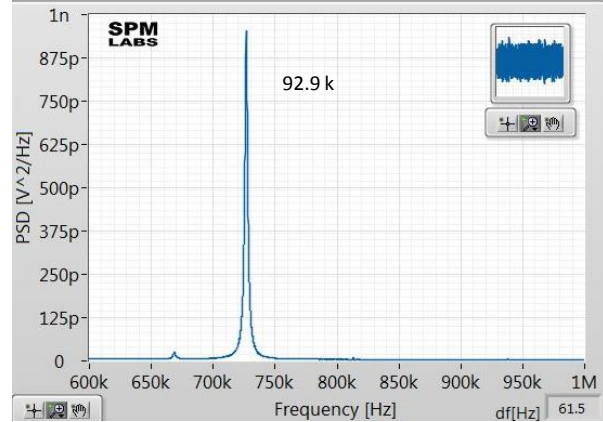


**Normal Deflection**

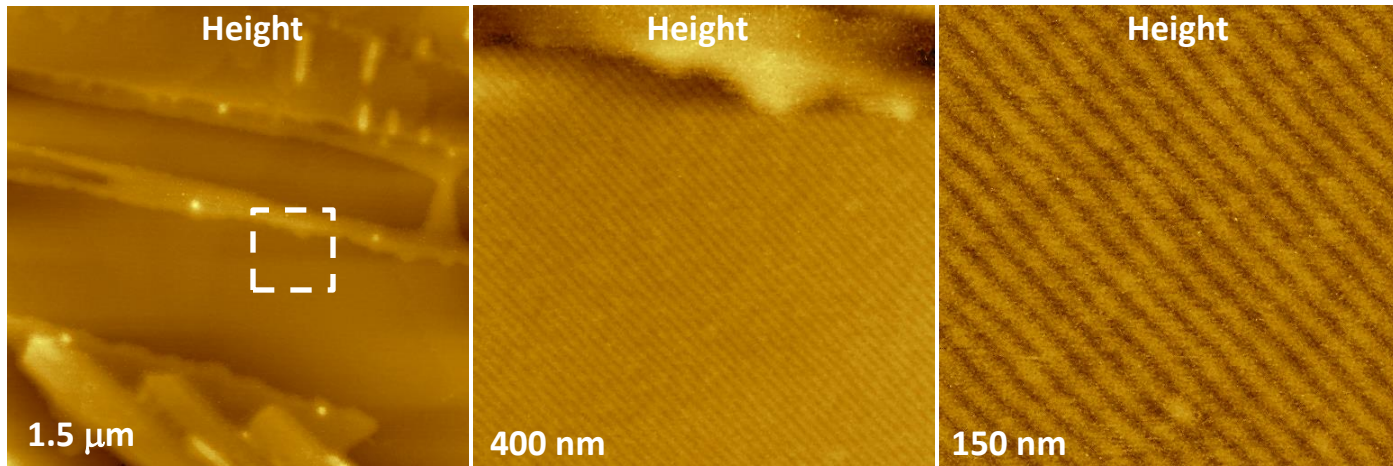


**Lateral Deflection**



Capabilities of 125/35/1 Si probe in AM-PI applications are illustrated by images of normal alkanes  $C_{60}H_{122}$  and  $C_{36}H_{74}$  deposited on HOPG. Height images of these deposits have revealed lamellar structures of the alkanes with spacings close to the lengths of the extended chain molecules of 7.7 nm and 4.7 nm. In case of  $C_{36}H_{74}$  alkane the tip-force was reduced to achieve a non-destructive imaging of the topmost layer of the adsorbate.

**Normal alkane  $C_{60}H_{122}$  on HOPG**



**Normal alkane  $C_{36}H_{74}$  on HOPG**

