

Flute

Garland Independent School District

High School Band Audition Music: 2020-2021

Andante (♩ = 76-84)

Musical score for the Andante section (♩ = 76-84). The score is written in 4/4 time and B-flat major. It consists of four staves of music. The first staff starts with a treble clef and a key signature of two flats. The second staff begins at measure 6. The third staff begins at measure 10 and includes triplets in measures 11, 12, 13, and 14. The fourth staff begins at measure 13 and ends with a double bar line and a key signature change to B-flat major.

Allegro Moderato (♩ = 96-132)

Musical score for the Allegro Moderato section (♩ = 96-132). The score is written in 4/4 time and B-flat major. It consists of five staves of music. The first staff begins at measure 17. The second staff begins at measure 20 and includes triplets in measures 21, 22, 23, 24, 25, and 26. The third staff begins at measure 23 and includes triplets in measures 24, 25, 26, and 27. The fourth staff begins at measure 27. The fifth staff begins at measure 30 and ends with a double bar line.

Oboe

Garland Independent School District

High School Band Audition Music: 2020-2021

Andante (♩ = 76-84)



Allegro Moderato (♩ = 96-132)



Garland Independent School District

High School Band Audition Music: 2020-2021

Andante (♩ = 76-84)

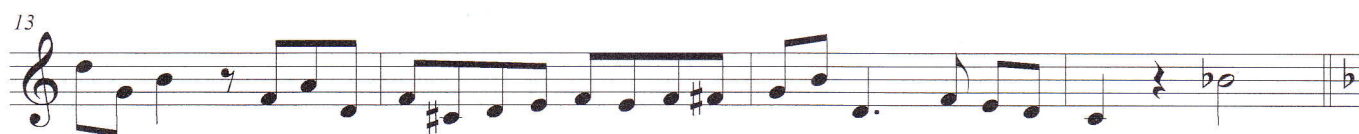


Clarinet in B \flat

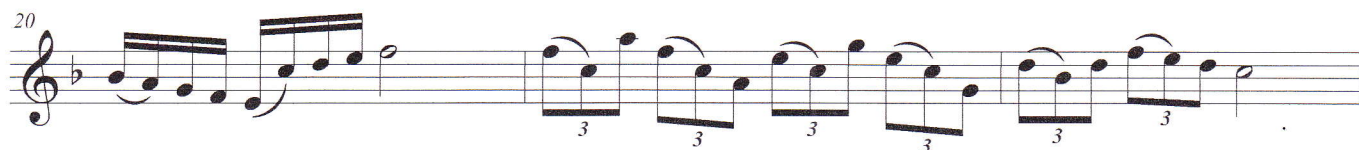
Garland Independent School District

High School Band Audition Music: 2020-2021

Andante ($\text{♩} = 76-84$)



Allegro Moderato ($\text{♩} = 96-132$)



Garland Independent School District

High School Band Audition Music: 2020-2021

Andante (♩ = 76-84)

Musical score for the Andante section (♩ = 76-84). The score is written in 4/4 time and consists of 13 measures. The key signature has one sharp (F#). The melody features eighth and sixteenth notes, with some measures containing triplets. Measure numbers 6, 10, and 13 are indicated at the start of their respective staves.

Allegro Moderato (♩ = 96-132)

Musical score for the Allegro Moderato section (♩ = 96-132). The score is written in 4/4 time and consists of 13 measures. The key signature has one flat (Bb). The melody is more rhythmic, featuring many eighth and sixteenth notes, with several measures containing triplets. Measure numbers 17, 20, 23, 27, and 30 are indicated at the start of their respective staves.

Alto Sax

Garland Independent School District

High School Band Audition Music: 2020-2021

Andante (♩ = 76-84)



Allegro Moderato (♩ = 96-132)

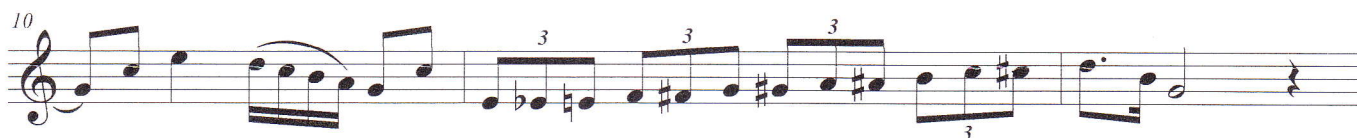


Tenor Sax

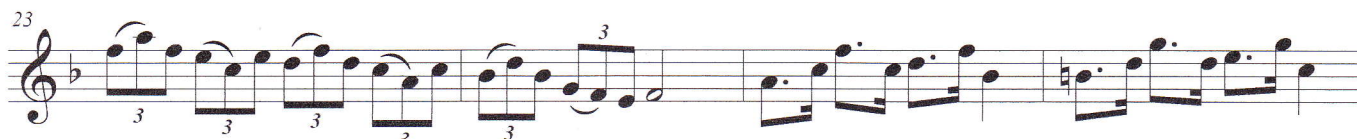
Garland Independent School District

High School Band Audition Music: 2020-2021

Andante (♩ = 76-84)



Allegro Moderato (♩ = 96-132)



Baritone Sax

Garland Independent School District

High School Band Audition Music: 2020-2021

Andante (♩ = 76-84)

Allegro Moderato (♩ = 96-132)

17

20

23

27

30

The image shows a musical score for a song titled "The Rose Tree". The score is written on five staves, each containing a line of music. The first staff begins with a treble clef and a key signature of one sharp (F#). The music consists of eighth and sixteenth notes, with some triplets indicated by a '3' over the notes. The second staff continues the melody, featuring more triplets. The third staff also includes triplets and a change in the key signature to two sharps (F# and C#). The fourth staff continues the melody with eighth notes and a final flourish. The fifth staff concludes the piece with a series of eighth notes and a final whole note. The title "The Rose Tree" is written in a decorative, cursive font at the bottom of the page.

Trumpet in B \flat

Garland Independent School District

High School Band Audition Music: 2020-2021

Andante ($\text{♩} = 76-84$)

Musical score for the Andante section (measures 1-13). The music is in 4/4 time and features a melodic line with various intervals and rests. Measure numbers 6, 10, and 13 are indicated at the start of their respective staves. The key signature has one flat (B \flat).

Allegro Moderato ($\text{♩} = 96-132$)

Musical score for the Allegro Moderato section (measures 14-30). The music is in 4/4 time and features a more rhythmic, melodic line with frequent eighth and sixteenth notes. Measure numbers 17, 20, 23, 27, and 30 are indicated at the start of their respective staves. The key signature has one flat (B \flat).

Horn in F

Garland Independent School District

High School Band Audition Music: 2020-2021

Andante (♩ = 76-84)



Allegro Moderato (♩ = 96-132)



Trombone

Garland Independent School District

High School Band Audition Music: 2020-2021

Andante (♩ = 76-84)



Allegro Moderato (♩ = 96-132)



Garland Independent School District

High School Band Audition Music: 2020-2021

Andante (♩ = 76-84)

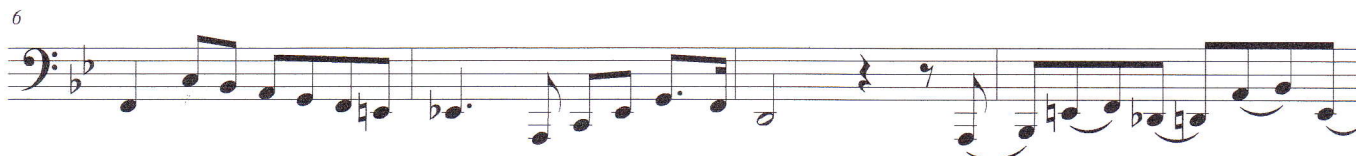


Tuba

Garland Independent School District

High School Band Audition Music: 2020-2021

Andante (♩ = 76-84)



Allegro Moderato (♩ = 96-132)



Mallets

Garland Independent School District

High School Band Audition Music: 2020-2021

Andante (♩ = 76-84)

6

10

13

Allegro Moderato (♩ = 96-132)

17

20

23

27

30

Garland Independent School District

High School Band Audition Music: 2020-2021

Andante (♩ = 76-84)

1 *mf*

6 *p* *mf*

10 *p*

13 *mf* R L R R L R L L

17 Allegro Moderato (♩ = 96-132)

p R L L R L L *f* R L R R L R L L R L R R L R L L

20 *p* *f* R L R L R L R L R L R L R L R L L

23 *fp* *p* *mf*

27 *f* L L R L R R L R L R L L R R L R L L *p* *f* R R L L

30 *mp* *p*