



# Architect's Bulletin\_1

**Via:**  Pick-Up  Hand Deliver  Email

**Date:** 21 March 2019

**To:** Newman Midland Corp.  
9242 Walker St., Bldg A  
Cypress, CA 90630  
(714) 220-5940

**Attn:** Adam Nissary, Sr. Project Manager

**Project:** Lowell Elementary School HVAC/Modernization - A#03-118647

**District:** Long Beach Unified School District

**PBK Project No.:** 18347

**Bulletin No.:** One (1)

**Description:**

Revisions to Edison High School Digital Media Studio.

The work as described shall be carried out in full conformance with the Contract Documents. Any changes in cost shall be identified, submitted and approved prior to the start of any work. All changes in cost shall be added to or deducted from the contract allowance.

Enclosures: A0.1 & A0.2

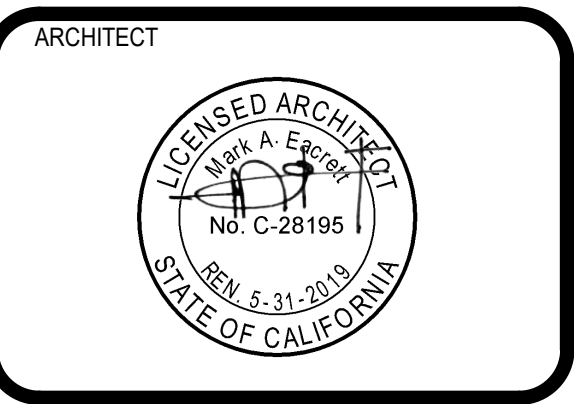
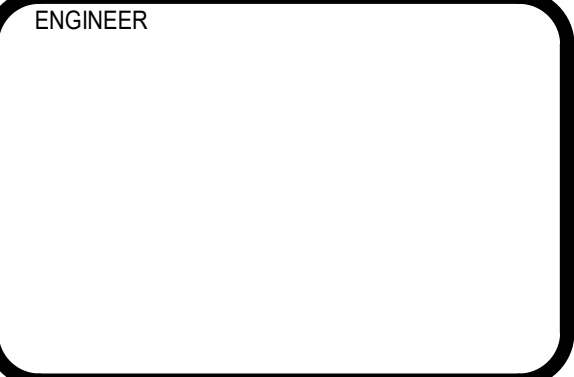
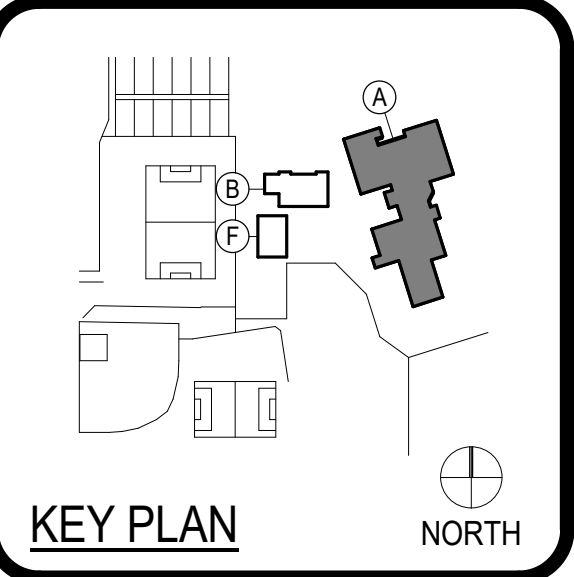
---

*(If enclosures are not as noted, please inform us immediately.)*

By:  
James Gonzales  
Project Coordinator, PBK Architects

cc: File





CLIENT		
HUNTINGTON BEACH UNION HIGH SCHOOL DISTRICT		
PROJECT NUMBER		
18347		
DATE:	01/16/2019	
DRAWN BY:	PL	
CHECKED BY:	JG	
REVISIONS		
No.	Description	Date
1	MEDIA STUDIO & COMPUTER	3/21/19

BID DOCUMENTS

**OVERALL ADMIN BUILDING PLAN**

**A0.1**

### CONSTRUCTION KEYED NOTES

#	Description
1	EXISTING WALL TO REMAIN
2	WALL TO BE DEMOLISHED
3	NON-RATED WALL TO BE PROVIDED
4	WALL PARTITIONS TAG SEE FOR PARTITION TYPES (20) A0.1
5	LETTER INDICATES CORE TYPE (S = STUD / C=CONCRETE)
6	LETTER INDICATES PARTITION TYPE
7	'R' DESIGNATES RATED CONDITION, WHERE OCCURS
8	DOOR NUMBER - SEE DETAIL FOR DOOR ELEVATIONS (17) A0.1
9	EXISTING BUILDING - NOT IN CONTRACT

### FLOOR PLAN LEGEND

### GENERAL NOTES

- DO NOT SCALE DRAWINGS. WRITTEN DIMENSIONS TAKE PRECEDENCE. CONTACT ARCH IF CLARIFICATION IS NECESSARY IN ORDER TO DETERMINE THE INTENT OF THE CONTRACT DOCUMENTS.
- ALL DIMENSIONS ARE TO STRUCTURAL COLUMN LINES OR THE SURFACE OF PARTITION ASSEMBLY UNLESS NOTED OTHERWISE.
- FIELD VERIFY ALL DIMENSIONS AND EXISTING CONDITION BEFORE COMMENCING WORK. NOTIFY ARCH OF ANY DISCREPANCIES PRIOR TO PROCEEDING WITH AFFECTED WORK.
- NOTES OR DIMENSIONS NOTED AS "TYPICAL" OR "TYP" OR "TYP" SHALL APPLY TO CONDITIONS THAT ARE TYPICAL. NOTES OR DIMENSIONS NOTED AS "SIMILAR" OR "SIM" OR "SIM" SHALL APPLY TO CONDITIONS THAT ARE SIMILAR.
- DIMENSIONS NOTED AS "FIELD VERIFY" OR "V.F." OR "V.F." SHALL BE MEASURED AND CONFIRMED AT THE PROJECT SITE BY THE CONTRACTOR AND REVIEWED WITH THE ARCH. BEFORE INCORPORATING INTO THE WORK.
- ALL INTERIOR FURR-OUT PARTITIONS THIS SHEET SHALL BE PARTITION TYPE UNLESS NOTED OTHERWISE.
- ALIGN FINISHED FACE OF WALLS WHERE WALL PARTITIONS OF DIFFERING THICKNESS ADJACENT AND/OR ADJOIN IN THE SAME PLANE.
- PROVIDE AND INSTALL CONT. REVEAL TRIM AT JOINT WHERE GYPSUM BOARD WALL PARTITIONS ADJUT AND/OR ADJOIN MASONRY WALL PARTITIONS IN THE SAME PLANE.
- ALL DOORS SHALL BE SET 4 INCHES OFF THE ADJACENT PERPENDICULAR WALL ON THE HINGE SIDE OF THE DOOR UNLESS NOTED OTHERWISE. NOTIFY ARCH OF ANY DOOR-RELATED CONFLICTS, INCLUDING BUT NOT LIMITED TO CONFLICTS CONCERNING ACCESSIBILITY STANDARDS.
- ALL DOOR THRESHOLDS AT ALL EXTERIOR DOORS SHALL BE SET IN FULL BED OF SEALANT.
- ALL FLOOR FINISH CHANGES SHALL OCCUR AT THE CENTERLINE OF DOORS UNLESS NOTED OTHERWISE.
- ALL FLOOR FINISH MATERIAL CHANGES SHALL HAVE REDUCER STRIPS.
- ALL REQUIRED ACCESSIBLE CLEARANCES FOR ALL ITEMS, INCLUDING BUT NOT LIMITED TO ALL COUNTER TOPS, ALL PLUMBING FIXTURES, ALL DRINKING FOUNTAINS, ALL ELECTRIC WATER COOLERS, ALL LAVATORIES, ALL URINALS, ALL TOILETS SHALL BE STRICTLY ENFORCED.
- REFER TO OTHER DISCIPLINE DOCUMENTS FOR ADDITIONAL SCOPE OF WORK.
- PATCH CONCRETE AND PLASTER AS REQUIRED TO MATCH (E) CONDITION - TYP. ALL BUILDINGS.
- PAINT ALL NEW AND EXISTING SURFACES AS DIRECTED BY ARCHITECT, TYP.

### 20 PARTITION TYPE A

3" = 1'-0"

Labels: (E) STRUCTURE, SEALANT AT NON-RATED WALLS, TOP PLATE (30) A0.2, PROVIDE SOUND INSULATION, 2X BLOCKING @ 4'-0" O.C., 5/8" GYPSUM BOARD AT EA. SIDE NONE @ PLUMBING CHASE SIDE, 2X WOOD MEMBER @ 16" O.C., SEALANT AT NON-RATED WALLS.

TYPE	FIRE RATING	UL SYSTEM	DESCRIPTION
SSA	NONE	NOT RATED	--

### 21 HEAD OF WALL

1 1/2" = 1'-0"

**NOT USED**

Labels: (E) ROOF SHEATHING, (E) RAFTERS, 2X WOOD BLOCKING, SOUND ATTENUATION BLANKETS, ACUSTICAL SEALANT, TYP. DOUBLE 2X TOP PLATE, TYP. 5/8" TYPE 'X' GYP. BD. STUD WALL PER PLAN, PERPENDICULAR TO FRAMING, (E) ROOF SHEATHING, (E) RAFTERS, 2X WOOD BLOCKING, SOUND ATTENUATION BLANKETS, ACUSTICAL SEALANT, TYP. DOUBLE 2X TOP PLATE, TYP. 5/8" TYPE 'X' GYP. BD. STUD WALL PER PLAN, PARALLEL TO FRAMING.

**NOT USED**

NOTES: REFER TO PARTITION TYPE A FOR WALL INFORMATION

### 28 BRACE WIRE CONNECTION TO TRUSS

NOT TO SCALE

Labels: JOIST WEB MEMBER, BRACE WIRE SADDLE TIE SEE, JOIST CHORD MEMBER, (E) WOOD FLOOR / ROOF DECK, (E) WOOD SLEEPERS WHERE OCCURS, (E) TRUSSES, #87F125-33 HAT CHANNEL SPANNING (2) JOISTS, #12 ITW BULDEX TEK SCREW EA. LEG OF TRUSS (ICC-ES ESR-1976), (2) #8 x 1/2" SELF-TAPPING SCREWS, STEEL STRAP 3" WIDE x 4" LONG x 12GA. MIN. BEND TO ALIGN WITH WIRE, BRACING WIRE - SEE.

NOTES: 1. BRACE WIRE SHALL ALIGN PARALLEL WITH THE TRUSS BOTTOM CHORD

### 29 CEILING WIRE SPLICES

6" = 1'-0"

Labels: HANGER WIRE, 3 TURNS IN 3" TYPICAL @ EACH END, HANGER WIRE ONLY, BRACE OR HANGER WIRE, 4 TURNS IN 1-1/2" TYPICAL @ EACH END, HANGER OR BRACE WIRE ONLY, NOTES: WIRE SPLICES ARE SHOWN LOOSELY TIED FOR ILLUSTRATIVE PURPOSES ONLY AND SHALL BE DRAWN TIGHT TO COMPLETE INSTALLATION WHEN CONSTRUCTED.

### 30 CONCRETE PATCH FOR SLAB

1" = 1'-0"

Labels: MATCH (N) CONCRETE ELEV. WITH EXISTING, SAW CUT (E) CONCRETE AS SHOWN ON PLAN. INTENTIONALLY ROUGHEN ALL CONTACT SURFACES, (E) CONCRETE SLAB, DOWEL TO (E) CONCRETE WITH #3 @ 12" O.C. EA. WAY. EMBED 2" INTO (E) CONCRETE WITH HILTY RE 500 EPOXY (ICC 2322).

### 14 WEST SECTION

3/16" = 1'-0"

### 16 NORTH SECTION

3/16" = 1'-0"

### 17 DOOR TYPES

1/4" = 1'-0"

Labels: SCHED. FRAME WIDTH, SCHEDULED DOOR WIDTH, AS SCHED., SCHED. DOOR HEIGHT, AS SCHED., FINISH FLOOR, FLUSH.

### 18 DUCT HANGER SUPPORT

6" = 1'-0"

Labels: BEAM CLAMP - TOLCO FIG. 67SS-38 USED FOR BASIS OF DESIGN, (E) TRUSS ANGLE, #10 - 1 1/2" S.M.S., DUCT STRAP, NOTE: MAX LOAD OF 80LBS PER CLAMP.

### 12 HM FRAME JAMB/HEAD AT NEW WALL

3" = 1'-0"

Labels: TYPE 'X' GYPSUM BOARD, HEADER SHOWN DASHED AT HEAD CONDITION, CEMENT PLASTER FINISH TO MATCH EXISTING, WOOD STUD FRAMING TO BE PROVIDED, HOLLOW METAL STEEL FRAME, FRAME ANCHOR (3 MINIMUM AT EACH JAMB WITH (2) #8 WOOD SCREWS), DOOR - MATERIAL PER SCHEDULE, NOTES: 1. FRAME DEPTH TO BE DETERMINED BY OVERALL WALL THICKNESS (TYP.), 1/2" TYP., 2", FRAME DEPTH, 2".

### 6 HM FRAME SILL AT NEW WALL

6" = 1'-0"

Labels: FRAME DEPTH, DOOR - MATERIAL PER SCHEDULE, FLOOR PLATE ASSEMBLY AT FIRE RATING OF 45MIN. AND GREATER ONLY - PER NFPA 80, FLOOR FINISH (WHERE OCCURS), TYPICAL, 3/4" MAX. PER BEC, 1/4" MAX.

### 5 ADMIN OVERALL BUILDING FLOOR PLAN

1/16" = 1'-0"

Labels: REVISED (18) A0.2, (15) A0.2, RCP PLAN, DEMO (8) A0.2, (3) A0.2, (16) A0.1.



### CONSTRUCTION KEYED NOTES

#	Description
03.01	REPAIR EXISTING CONCRETE SLAB
08.01	7'-0" HIGH GYPSUM BOARD FINISHED OPENING
08.02	2'-4" x 6'-0" WINDOW, HEAD AT 7'-0" HIGH PROVIDED BY G.C. WITH DOUBLE PANE GLASS.
23.02	SUPPLY AIR GRILL - RE. MECHANICAL
23.03	RETURN AIR GRILL - RE. MECHANICAL
26.01	DARK ROOM LIGHT - RE. ELECTRICAL
26.02	LOCATION OF FLOOR OUTLET, RE. ELECTRICAL
26.03	CEILING LIGHT, RE. ELECTRICAL
D1.01	(E) LIGHT TO REMAIN
D2.01	(E) REFRIGERATOR TO BE REMOVED
D3.01	SAWCUT (E) SLAB
D3.02	DEMOLISH (E) CASEWORK
D3.03	REMOVE (E) DARK ROOM LIGHTS
D3.04	REMOVE (E) POWER & DATA POLE, RE. ELECTRICAL
D3.05	DEMOLISH (E) DOOR AND FRAME
D3.06	DEMOLISH (E) LIGHT
D3.07	DEMOLISH (E) REGISTER
D3.08	REMOVE (E) MULTIFITURE SINK, CUT AND CAP UTILITIES
D3.09	REMOVE (E) SINK, CUT AND CAP UTILITIES, PATCH AND REPAIR WALL TO MATCH EXISTING ADJACENT

### REFLECTED CEILING PLAN LEGEND

	EXISTING CEILING FINISH
	NEW GYPSUM BOARD CEILING
	EXISTING ACOUSTIC CEILING TILE
	DEMOLISH ACOUSTIC CEILING TILE
	NEW ACOUSTIC CEILING TILE (ACT1)

### FLOOR PLAN LEGEND

	EXISTING WALL TO REMAIN
	WALL TO BE DEMOLISHED
	NON-RATED WALL TO BE PROVIDED
	WALL PARTITIONS TAG SEE FOR PARTITION TYPES
	1. LETTER INDICATES CORE TYPE (S = STUD / C=CONCRETE)
	2. # INDICATES CORE WIDTH
	3. LETTER INDICATES PARTITION TYPE
	4. 'R' DESIGNATES RATED CONDITION, WHERE OCCURS
	DOOR NUMBER - SEE DETAIL FOR DOOR ELEVATIONS
	EXISTING BUILDING - NOT IN CONTRACT

### FINISH SCHEDULE MATERIAL ABBR.

ACP	ACOUSTIC CEILING PANEL
CONC	CONCRETE
CFT	CARPET
CT	CERAMIC TILE
CTB	CERAMIC TILE BASE
GYP	GYPSUM BOARD
P	PAINT
RB	RUBBER BASE
SV	SHEET VINYL
SCB	SHEET VINYL COVERED BASE
(E)	(E) MATERIAL TO REMAIN
(ME)	MATCH (E) MATERIAL
ACP1	2X4 ACOUSTICAL CEILING PANEL PER SPECIFICATIONS
P1	PAINT TO BE NAVAJO WHITE AND PER SPECIFICATIONS

### FINISH SCHEDULE FINISHES ABBR.

ACP1	SEE CEILING TYPES INFORMATION IN 'FINISH SCHEDULE COMMENTS'
ACP2	SEE CEILING TYPES INFORMATION IN 'FINISH SCHEDULE COMMENTS'
P1	PAINT TO BE NAVAJO WHITE AND PER SPECIFICATIONS

### FINISH SCHEDULE COMMENTS

ALL SCHEDULED DIRECTIONS (NORTH, EAST, SOUTH, WEST) ARE PER PLAN DIRECTIONS, NOT TRUE COMPASS DIRECTIONS.

ALL SCHEDULED CEILING HEIGHTS ARE FROM THE PRIMARY FLOOR LEVEL WITHIN THE ROOM AND OR SPACE, AND ARE NOT FROM AN ELEVATED FLOOR LEVEL, AND ARE NOT FROM A RECESSED FLOOR LEVEL.

ALL FINISH MATERIALS SHALL MEET FLAME SPREAD RATINGS PER THE BUILDING CODE.

PROTECT ALL FINISHED FLOORING SURFACES FROM DAMAGE DURING ALL CONSTRUCTION PHASES.

PAINT ALL NON-FACTORY FINISHED EXPOSED METAL.

LAY-IN CEILING TYPES  
 ACP 1: STANDARD MINERAL FIBER, 2'x4"  
 ACP 2: SAG RESISTANT, VINYL-FACED, MINERAL FIBER, 2'x4"  
 (E) MATERIAL TO REMAIN

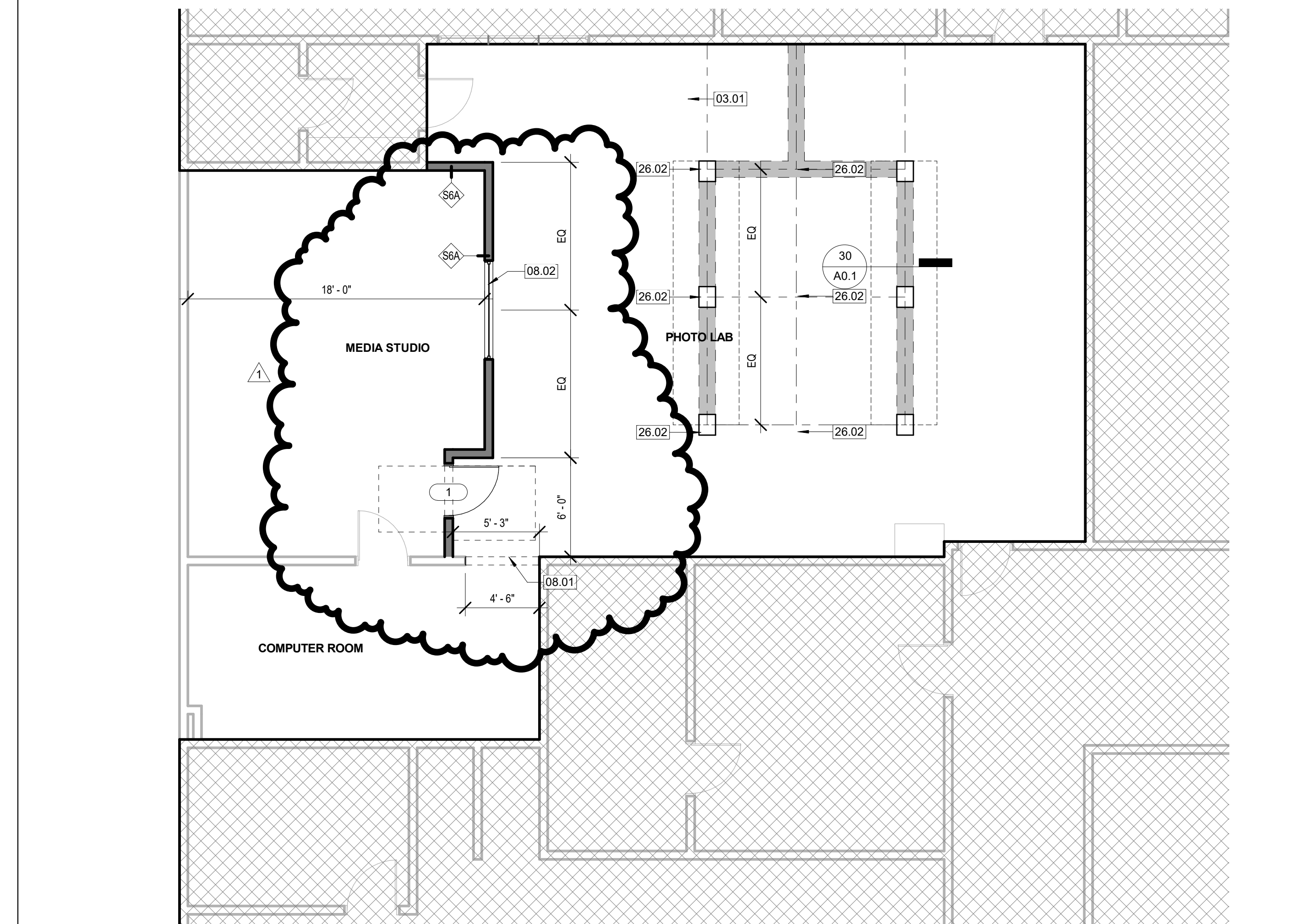
1. ACP TO MATCH EXISTING COLOR  
 2. MATCH FLOOR FINISH TO EXISTING AND PER SPECIFICATIONS

### FINISH SCHEDULE - PHOTO LAB

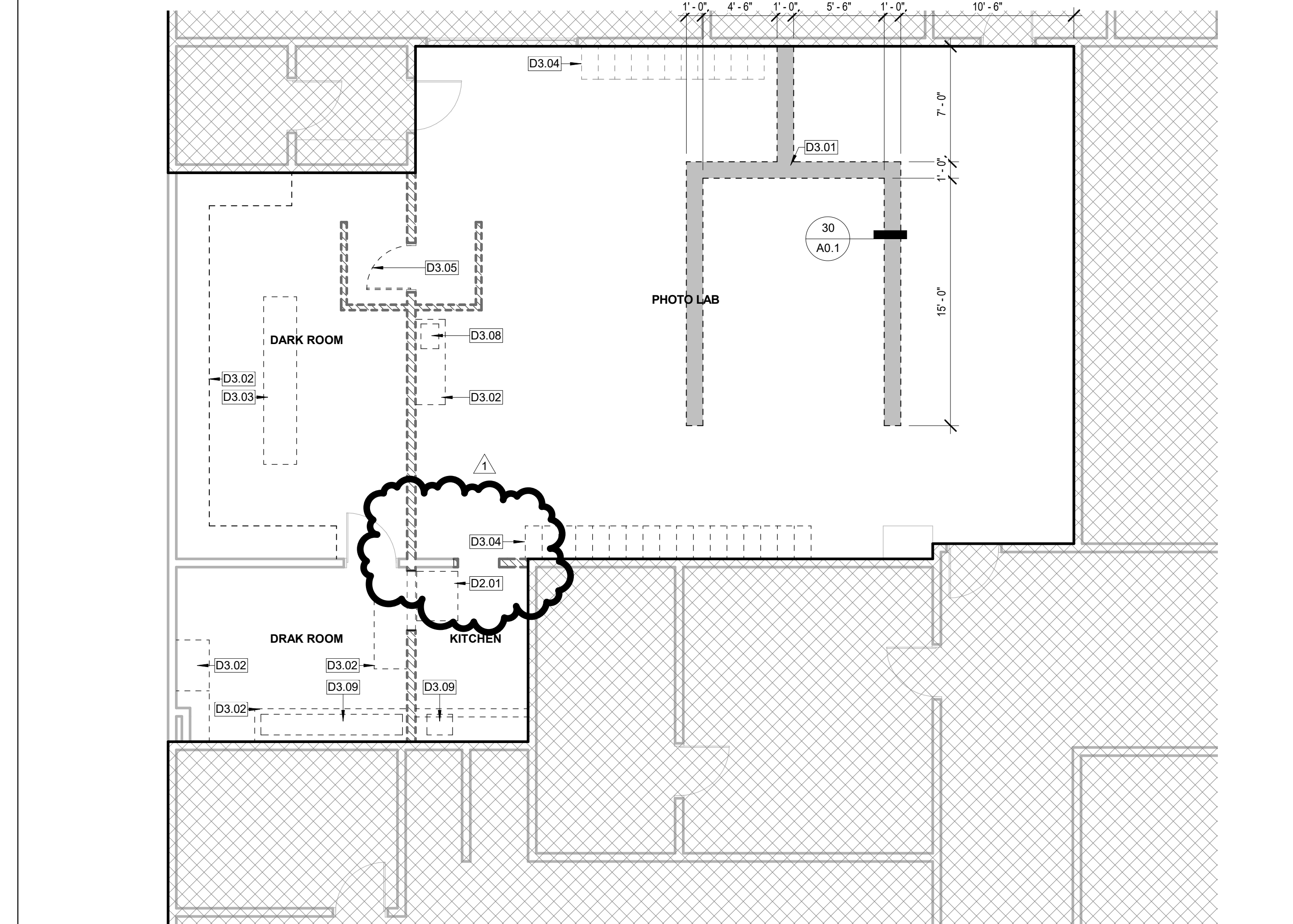
Name	floor finish demo	(E) FLOOR MATERIAL	FLOOR		WALLS				CEILING		COMMENTS
			MATERIAL	FINISH	MATERIAL	FINISH	MATERIAL	FINISH	MATERIAL	FINISH	
PHOTO LAB	SAWCUT SLAB	CONCRETE	-	-	MATERIAL	FINISH	MATERIAL	FINISH	MATERIAL	FINISH	
MEDIA STUDIO	NONE	CONCRETE	-	-	EXISTING	P1	EXISTING	P1	EXISTING	P1	
COMPUTER ROOM	NONE	CONCRETE	-	-	EXISTING	P1	EXISTING	P1	EXISTING	P1	

### DOOR SCHEDULE - PHOTOLAB

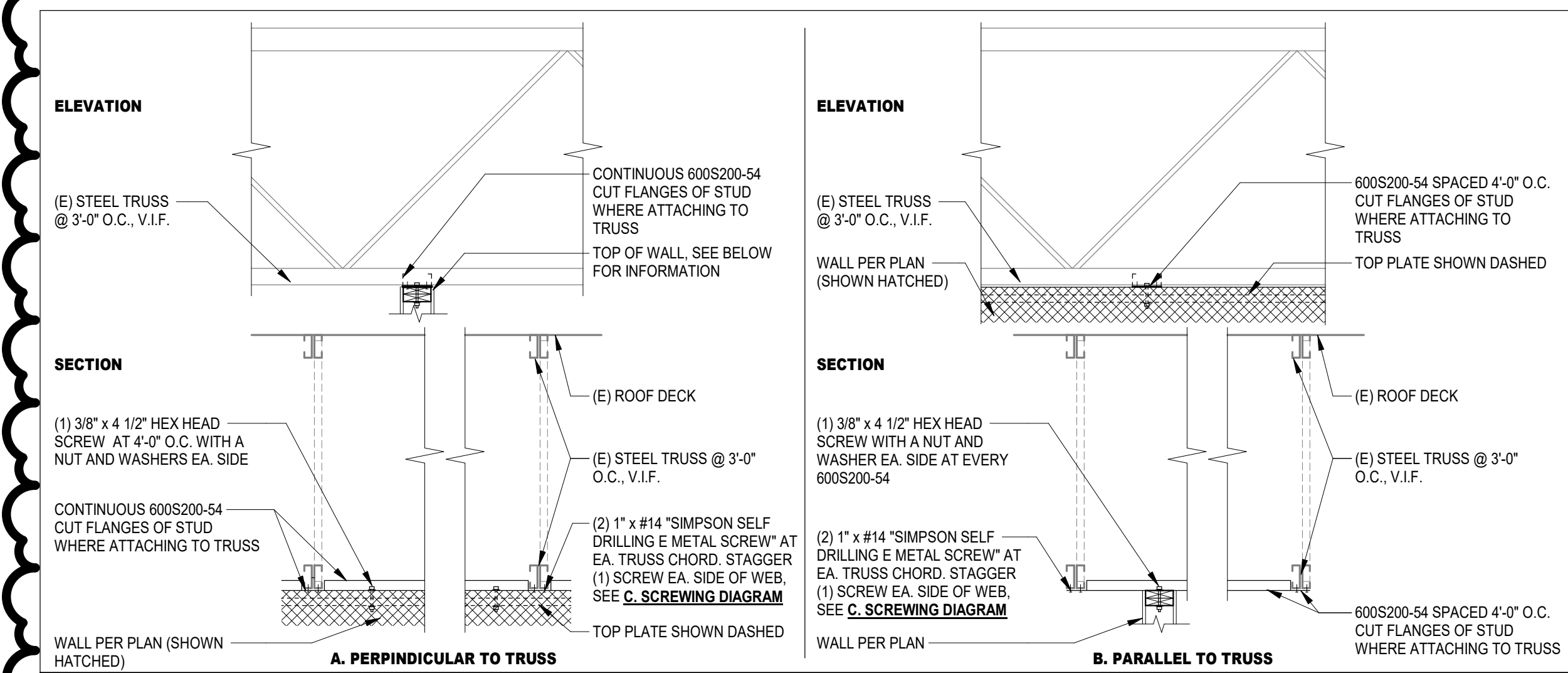
ROOM	DOOR #	(E)/(N)	PAIR/TYPE	SIZE W X H		FRAME		DETAILS		HARDWARE	DOOR #	FIRE RATING LABEL	COMMENTS	P.H.	
				SINGLE	WIDTH	HEIGHT	MATL.	FINISH	MATL.						FINISH
MEDIA STUDIO	1	(N)	F	SINGLE	3'-0"	7'-0"	WOOD	STAIN	23/A0.2	HM	PAINT	11/A0.2	17/A0.2		NO



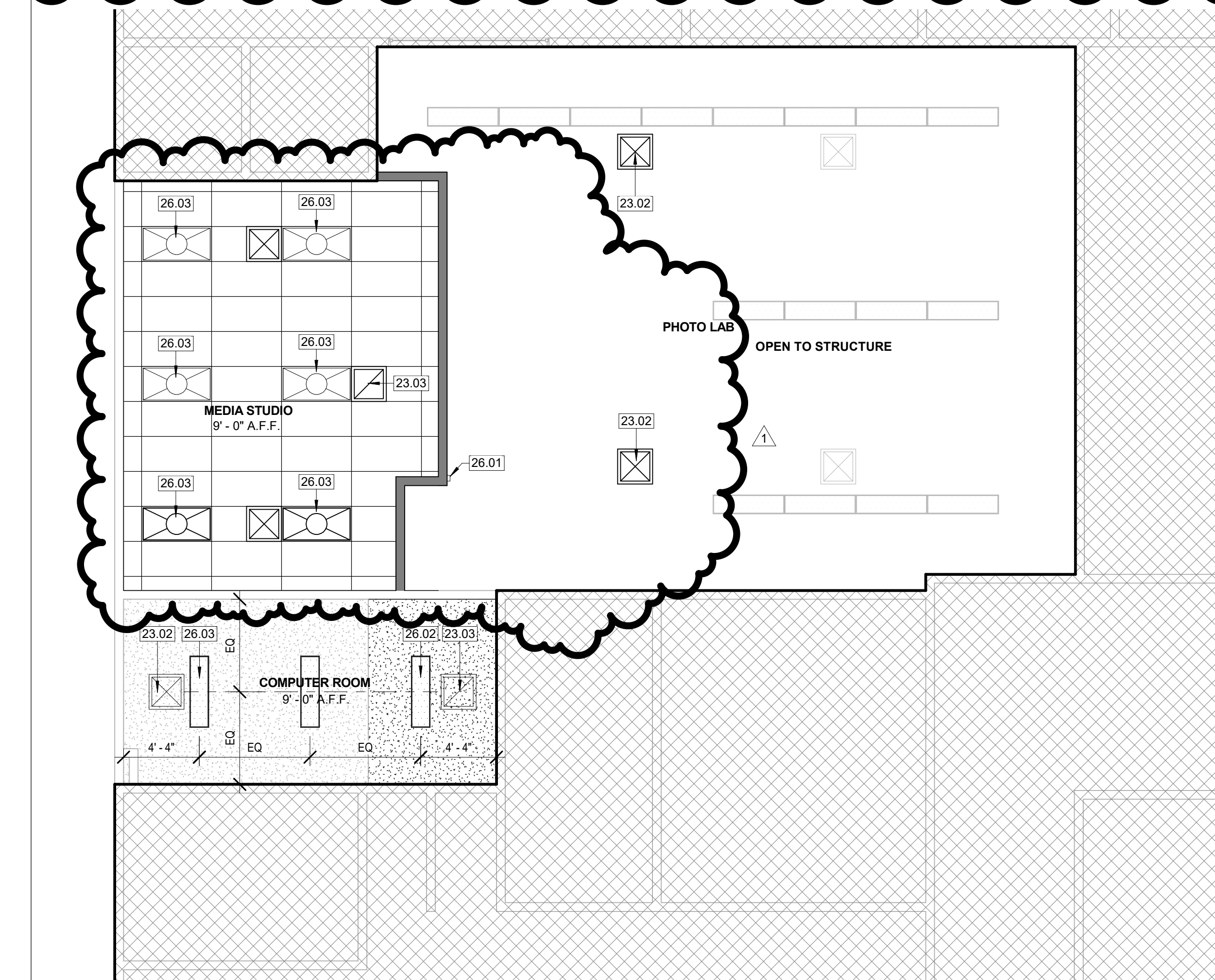
15 FLOOR PLAN  
 3/16" = 1'-0"



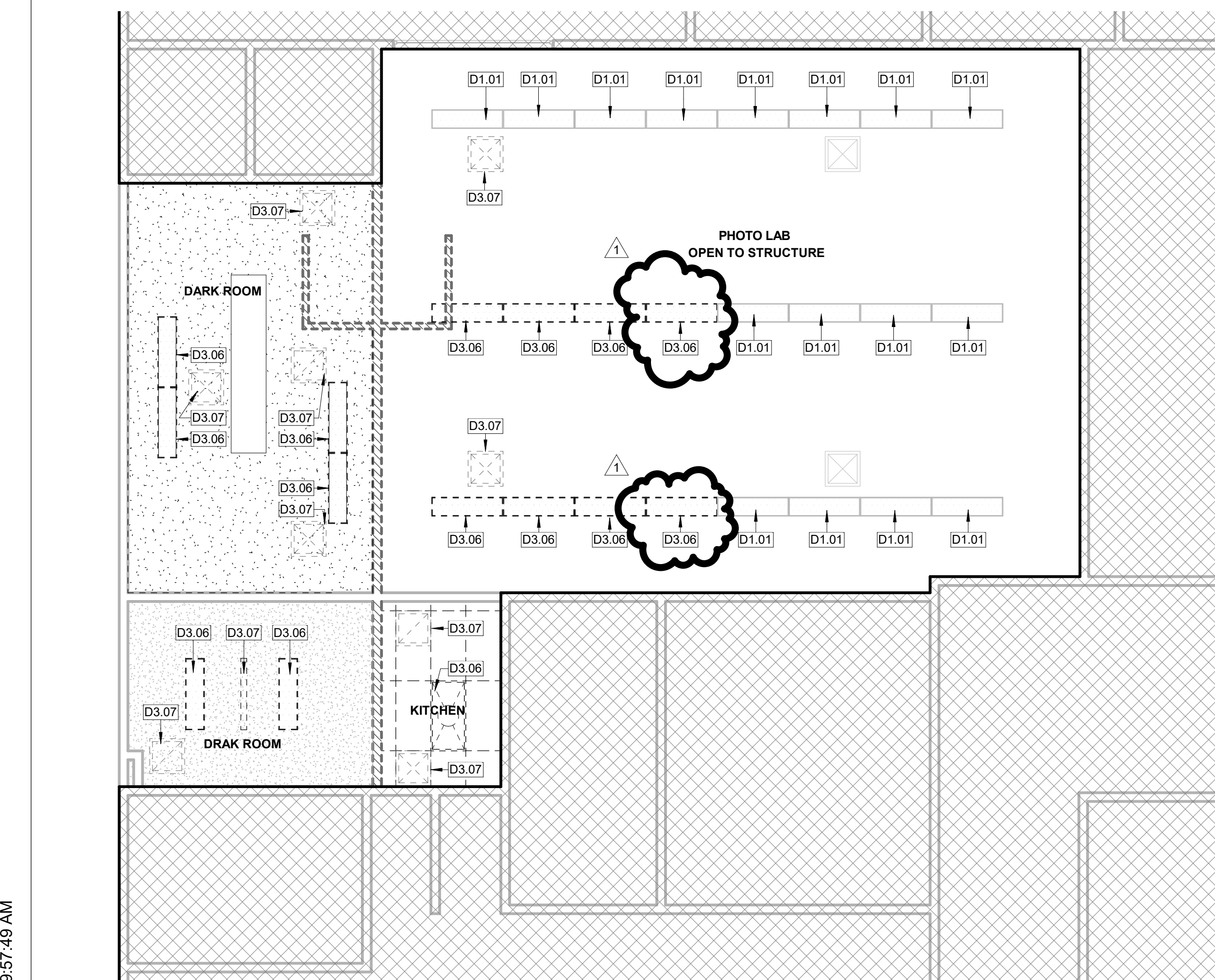
3 DEMO FLOOR PLAN  
 3/16" = 1'-0"



30 TOP OF WALL CONNECTION  
 1/2" = 1'-0"



18 REFLECTED CEILING PLAN  
 3/16" = 1'-0"



6 DEMO REFLECTED CEILING PLAN  
 3/16" = 1'-0"