

## Midstate Trail Conservation Partnership



### **Saving A Massachusetts Treasure**

The Midstate Trail (MST) is a 92-mile scenic trail stretching from Rhode Island to New Hampshire and spanning 14 communities in Worcester County, from Ashburnham to Douglas. Originally developed in the 1920's, the MST evolved from a number of small paths and a continuous section extending from Mt. Watatic to Mt. Wachusett. The trail that hikers enjoy today largely coalesced into its current form in the 70's. Since then, it has been blazed, improved and maintained by a spirited group volunteers that form the MST Committee of the Worcester Chapter of the Appalachian Mountain Club. Now the challenge is to permanently preserve this Massachusetts treasure.

*Hikers enjoy the Midstate  
on National Trails Day  
Colin Novick*

# MIDSTATE TRAIL

**Total Miles:**  
92

**Protected Trail Miles:**  
55

**Trail Vital Signs:**  
Miles Protected: 59.3%  
Miles Unprotected: 22.4%  
Miles On-Road: 18.3%

**Hikers per year:**  
2500-3000

**Annual volunteer hours:**  
1854 hours

**Estimated value of volunteer contribution:**  
\$49,815.00

**Bog and stringer bridging installed:**  
950 feet

**Scenic Viewpoints:**  
Crow Hills, Mt. Watatic,  
Mt. Wachusett, Stodge Meadow  
Pond (Mt. Hunger)

**Trail Communities:**  
Ashburnham, Ashby, Westminster,  
Princeton, Hubbardston, Barre,  
Rutland, Oakham, Leicester,  
Spencer, Charlton, Oxford,  
Sutton, Douglas

**Long-Distance Trail Connections:**  
Mass Central Rail Trail, Rhode Island  
North-South Trail, Southern New  
England Trunkline Trail



## A New Partnership to Conserve the Trail

The Midstate Trail Conservation Partnership is a new collaboration between local communities, land trusts, trail groups, planning boards, conservation commissions and others passionate about preserving lands and access for the Midstate Trail. With assistance from the National Park Service, the partnership was formed in January 2015. Representatives include Appalachian Mountain Club, Common Ground Land Trust, Greater Worcester Land Trust, Massachusetts Department of Recreation and Conservation (DCR), North County Land Trust, Opacum Land Trust, and Westminster Planning Board.

## Conserving the Midstate Trail: 2015 Goals

- Identify and advance new opportunities for protecting the MST
- Recruit additional partners
- Plan a trailwide event for National Trails Day



Along the MST: Sibley Farm in Spencer  
Nathan Goshgarian



**MIDSTATE TRAIL**  
[www.midstatetrail.org](http://www.midstatetrail.org)

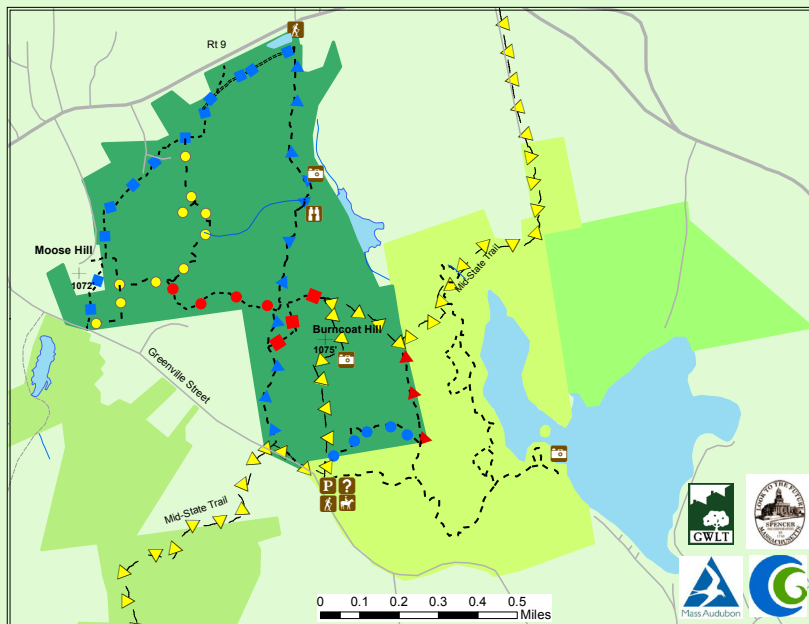




View of Stodge Meadow Pond, Ashburnham  
Ted Hoosick

## Protecting the Midstate Trail: Sibley Farm

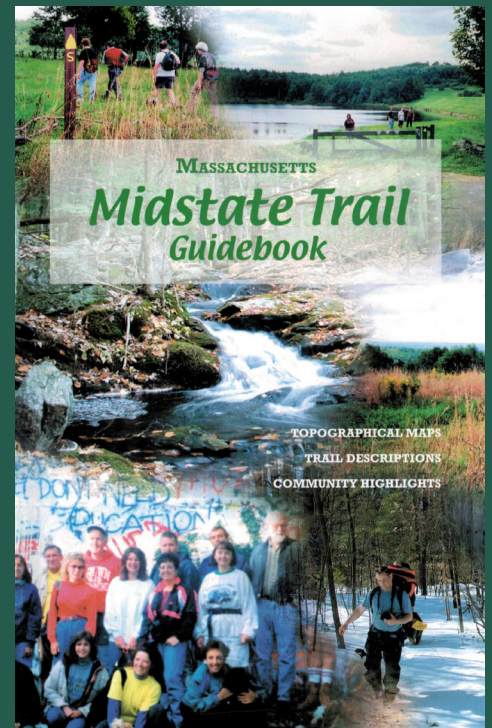
The recent conservation of Sibley Farm in Spencer represents a model success for protection of the MST and for land conservation in Massachusetts. Comprised of beautiful open fields, forestlands and wetlands, the 225-acre farm provides new trail linkages to the MST and to the Massachusetts Audubon Society's Burncoat Pond Wildlife Sanctuary and Spencer State Forest. The Massachusetts Audubon Society worked with five landowners, who agreed to sell 225 acres that make up Sibley Farm in 2014. In total, 575 acres of land were protected in perpetuity.



“

*I write today in strong support of the Midstate Trail Conservation Partnership...The great Massachusetts poet and conservationist, Henry David Thoreau once wrote 'I believe that there is a subtle magnetism in nature, which, if we unconsciously yield to it, will direct us aright.'”*

- Massachusetts Congressman James P. McGovern.



To purchase a trail guide visit:  
[www.midstatetrail.org/purchase](http://www.midstatetrail.org/purchase)

All proceeds go towards the  
MST Committee of the AMC  
Worcester Chapter.



Midstate Trail Crew  
Mark DuBois

**MST BRIDGING PROJECT:** Another outstanding success for the Midstate Trail Crew was the amazing MST bridging project. In the past five years, volunteers coordinated by the MST Committee built 90 sections (950 feet!) of bog and stringer bridges in 9 of the 14 MST trail communities. The bridges allow universal accessibility in many areas and keep the trail open during rainy months.

**TRAIL PROTECTION IN CHARLTON:** Gunter Estates is an open space development cluster proposed along the Midstate Trail in the town of Charlton. This 59 home neighborhood will be built around the Midstate Trail, giving the residents easy access to the trail and the public access to the 100 acres of Gunter Farm. This development will ensure the protection of this trail section.

**NEW CONNECTOR TRAILS / THE WORCESTER LINK:** A new connector trail is envisioned to provide Worcester hikers direct access to the MST. The Greater Worcester Land Trust is leading the development of the connector section. Do you have an idea for an MST Connector? Let us know.

**NATIONAL TRAILS DAY 2015:** Keep an eye out for news on our National Trails Day event on Saturday, June 6th.



## Contact

**SAMANTHA EATON**  
Midstate Trail Conservation Partnership  
(MSTCP) Outreach Coordinator  
midstatetrail@gwlt.org  
508.795.3838 x 4

**KIMBALL SIMPSON**  
Appalachian Mountain Club – Worcester  
Chapter - Midstate Trail Committee  
kimts@aol.com  
508.366.0485