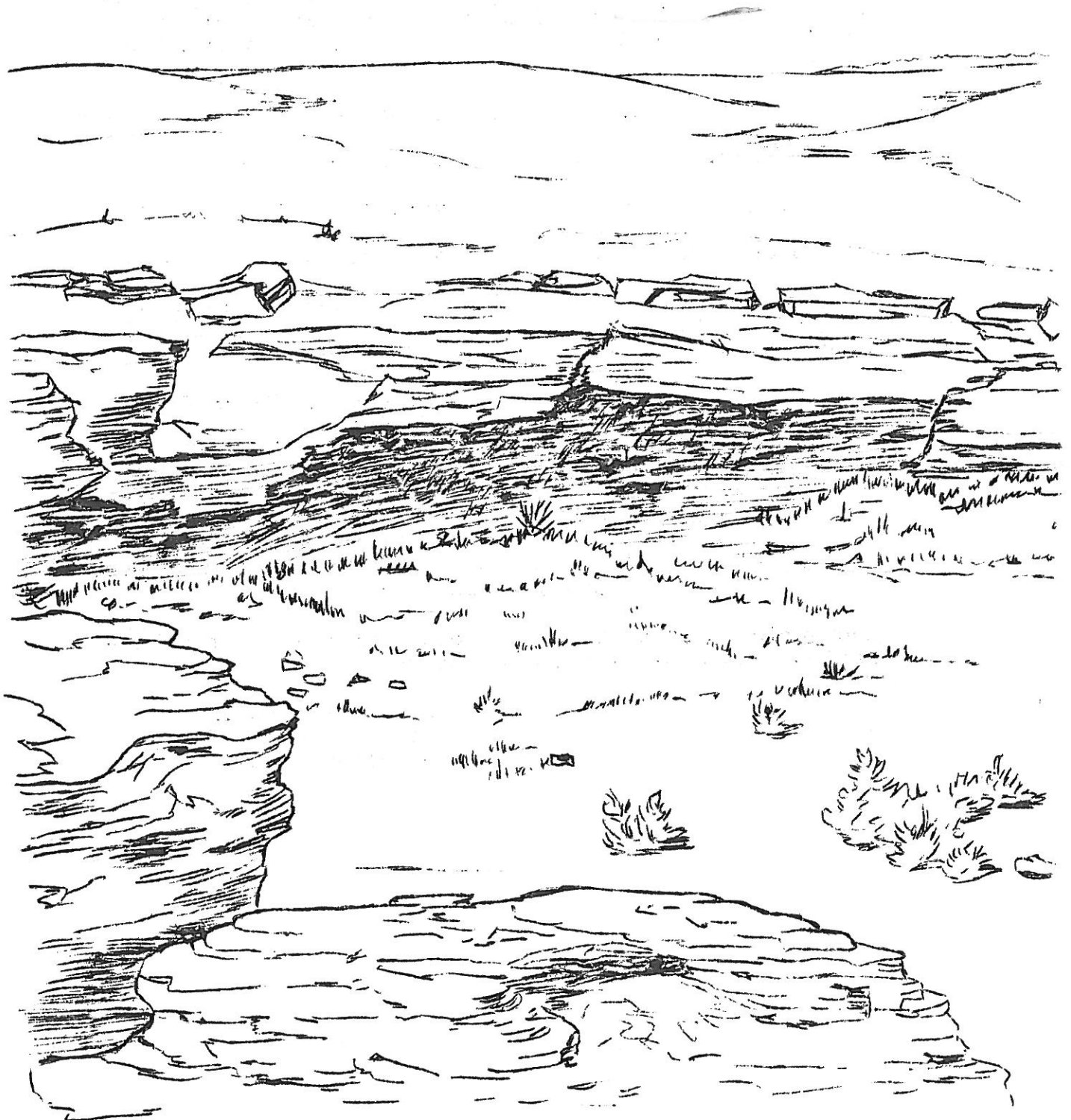


THE WYOMING ARCHAEOLOGIST

VOL. VI

NO. 1

MARCH, 1963



THE LEE SITE - 48NA326

C O N T E N T S

	<u>Page</u>
President's Letter	1
State Officers	2
Lee Site - Randall	3
Figure 1	8
Figure 2	9
Figure 3	10
Figure 4	11
The Mahoney Burial - Galloway	12
Figure 1	14
Minutes of State Annual Meeting	15
Cheyenne Chapter Organized	18
Membership List	19
Membership Renewal and Donation Form	24

Dear Fellow Members:

The Casper Chapter was pleased to play host to those of you who were in attendance at the recent annual meeting. It was good to renew some old acquaintances and form some new ones. I'm sure we all enjoyed Dr. MacLachlan's excellent talk on an interesting grazing civilization of Central Asia.

Some desired changes were made in our by-laws which should resolve confusion from previously conflicting provisions.

The proposed revisions in antiquities legislation apparently were "lost in the shuffle" in the recent session of the Wyoming Legislature. Ted Weber, who is secretary of the Casper Chapter as well as a prominent attorney in the "Oil Capital", thinks that the desired results can be obtained through enlisting the cooperation of the proper authorities to enforce existing statutes. I have appointed him chairman of a Committee for Enforcement of Antiquities Laws, with authority to contact public officials, collaborate with the Historical Society and other organizations, disseminate information to the general public through news media and other methods, and to take any other action appropriate to accomplish the objective of the committee. Ted already has commenced work and will have a progress report soon. He thinks a major part of the endeavor will be the educational aspect of it. I hope Ted will receive assistance which he may request from other members of the Society.

Ted Weber's present and past work on legal ramifications of archeology emphasizes the diversity of valuable talents which are growing in our garden and may be utilized effectively by the Society. Let us continue our progress in this direction.

By the time this issue is circulated I hope that the Cheyenne Chapter will have been duly chartered and that a big WELCOME! will be in order. The group, which includes Grant Wilson and Louis Steege, has among its early intended projects a Cheyenne Night School course in archeological field methods to be taught by a U.W. staff member, and a catalogue survey of "teepee rings" in southeastern Wyoming. These projects seem particularly appropriate as the initial endeavor of a newly-formed chapter and we extend our best wishes to the Cheyenne group as they continue their organization activities and get into Archeology.

The Casper Chapter is undertaking an archeological surface reconnaissance survey of Natrona County--listing by each township the occurrence and location of potential shelters and caves, monuments, fire lenses, chips, quarries, pot sherds, and related features. A proper cataloguing of private artifact collections in Casper will also be attempted. It is felt that these projects will be particularly suitable for work by very small groups convening whenever time is available.

In the near future I trust we will hear further of the above projects, and also of a continuation in the intense and valuable investigations being carried on by the Sheridan and Northern Big Horn Basin Chapters.

Dave Baskett
State President

1963
STATE OFFICERS

President:
David Baskett 1544 Bellaire Dr. Casper, Wyo.

Vice-President:
Jim Goodwin Rt. 1, Box 260 Sheridan, Wyo.

Sec.-Treasurer:
Carlton W. Belz 1742 Westridge Circle Casper, Wyo.

State Editor:
Jim Goodwin Rt. 1., Box 260 Sheridan, Wyo.

State Legislative Co-ordinator

CHAPTER OFFICERS

Casper Chapter

President: Wallace H. Alford
V. President: Richard E. Ecklund
Sec.-Treasurer: Ted J. Weber
Directors: Mrs. Martha Foster, C. W. Belz
David S. Baskett

Northern Big Horn Basin Chapter

President: Tom Knapp
V. President: Florence Castle
Sec.-Treasurer: Mabel Oliver
Directors: Edna Knapp, Shirley Will,
Bob Will, Wayne Breitweiser

Sheridan Chapter

President: Elaine Hilman
V. President: Jim Goodwin
Secretary: Frances Nantkes
Treasurer: Zane Hilman
Directors: Hans Kleiber, Bob Frison,
Bill Sand, Archie Leland

The following article is reprinted from the Wyoming Geological Association Symposium on Early Cretaceous Rocks, 1962. The author, Arthur G. Randall, formerly of Casper, is a member of the Wyoming Archeological Society, Inc., and the Colorado Archeological Society, Denver, Colorado.

CORRELATION OF LEE SITE ARTIFACT ROCK TYPE WITH QUARRY SITES, WYOMING

Introduction

The Lee Site (48NA 326), an early man rock shelter recently excavated by the Casper Chapter of the Wyoming Archeological Society, is located 50 miles north of Casper, Wyoming, in the NW Sec. 33, T. 41 N., R. 80 W., Natrona County, Wyoming (fig. 1).

Figure 1 is a detailed topographic map of the Lee Site. The site is situated on the north bank of Longs Canyon Creek which has dissected (sic) the small habitation plateau. The plateau is nearly 90 feet wide and 175 feet long.

History

In the fall of 1959, Mr. Bun Lee (then of Midwest, Wyoming) reported on an interesting find to the Casper Chapter of the Wyoming Archeological Society. The find was investigated by members of the Wyoming Archeological Society and it was concluded to be a combination killing, skinning and rock shelter site. Early in 1960 after the site had been surveyed, plans were made to begin digging. An exploratory trench 190 feet long was laid out and excavated to an average depth of nearly 4 feet (A through Q-5, fig. 1). One pit (B-6) was dug to a depth of .8 feet. Most of the digging was carried on immediately beneath the rock shelter or over-hang. The quantity and variety of artifacts decrease rapidly south from a point some 20 feet south of the rock shelter. Several fire lenses associated with mammal bones can still be seen on the north bank of Longs Canyon Creek.

Over 230 artifacts (complete, broken or fragmental) were uncovered at the Lee Site including projectile points, scrapers, fleshers, drills, knives, gravers, awls, hammer stones, blades, groovers, shaft smoother, use flakings, pestle, spoke shave and pottery fragments. Figures 2 and 3 are sketches of several typical artifacts found at the Lee Site which was officially abandoned as of January, 1962.

Other Quarry Sites in Wyoming

Nine quarry sites in Wyoming have been located and described either by the author or reviewed from published material (fig. 4).

It is here postulated that these are not the only quarries from which the Lee Site early man mined his rock for artifacts but that the rock type present at the Lee Site very closely resembles that which is described at the following quarries:

Table 1 Wyoming Quarry Sites

Quarry Number	Quarry Name	Location	Rock Type
Q-1	3 Corners	SW Sec. 30, T. 41 N. R. 94 W. Natrona County	Quartzite - light brown " - gray " - cream " - tan
Q-2	Upper Sibylee	Sec. 36. T. 20 N. R. 72 W. Albany County	Chert - red
Q-3	Big Boxelder	NE Sec. 3, T. 31 N. R. 75 W. Converse Co.	Quartzite - red Agate - moss " - varicolored
Q-4	Manville	Manville, Wyo.	Chert - varicolored
Q-5	North Fork	Sec. 1, T. 40 N. R. 87 W. Natrona County	Quartzite - brown, speckled
Q-6	Sheep Creek	NW Sec. 17, T. 26 N. R. 75 W. Albany County	Quartzite - red " - pink " - tan/yellow
Q-7	Dry Fork Site	NW Sec. 35, T. 32 N. R. 88 W. Natrona County	Jasper - red " - brown
Q-8	Obsidian Cliff Site	NW Yellowstone Park	Obsidian - black " - brown
Q-9	Fish Creek Site	Sec. 6. T. 30 N. R. 83 W. Natrona County	Chert - "tapioca" or "liverstone"

As shown in Figure 3, early man carried obsidian rocks some 230 miles (air line) whereas the quartzites of Q-1 were transported only 31 miles.

Randall (Cont.)

Lee Site Artifacts

Many and varied rock-mineral types are represented by the Lee Site artifacts. For the sake of consistency the author classified all rock and mineral types using the definitions as presented by Dana and Ford in their Textbook of Mineralogy: agate, chert, flint, jasper, obsidian, quartz and quartzite.

Such rock types as tapioca chert, obsidian and brown speckled quartzite are very distinctive and can be correlated with accuracy and ease with quarry sites C-8, Q-9, and Q-5, respectively.

Early man probably quarried materials for his artifacts as near to his camp site as possible. This is evidenced by the large number of quartzite artifacts (51) that correlate with the 3 Corners quarry which is located 31 miles to the west.

The Lee Site is believed to have been a killing-skinning camp site as shown by the abundance of blades, knives and scrapers-- a total of 98 (Table 2).

Table 2 Type of Artifact vs Rock Type

Type of Artifact		Rock Type	
Spoke Shave	1		
Groover	1		
Pestle	1		
Hammer Stone	1		
Shaft Smoother	1		
Graver	2	1	Granite
Awl	2	2	Sandstone
Unknown	3	5	Quartz
Use Flaking	4	5	Bone
Flesher	5	16	Obsidian
Drill	5	17	Flint
Knife	24	21	Jasper
Blade	32	44	Chert
Scraper	42	44	Agate
Point	107	91	Quartzite

Number found in Lee Site

Forty-four percent of all the artifacts identified consist of complete or fragmental projectile points. Many of these points were used for hunting but a large number of the broken points were rejects and chips.

Several hundred pounds of bison, elk, deer, antelope, coyote, wolf, prairie dog, rabbit, rat, mice, and bird bones were discovered at shallow depths early in the excavation of the site.

Randall (Cont.)

Geology

The Lee Site is situated nearly four miles east of Tisdale anticline on the southeast flank of the Big Horn Mountains in an area of gentle east dip (see geologic map, fig. 1). The ancient camp site is located beneath a rock shelter formed by an upper Frontier sandstone.

Several pictographs were noted on the hard smooth surfaces of the upper Frontier sands. Box canyons are common in the area surrounding the Lee Site. Early man took advantage of these canyons as he either ran buffalo or bison off the edge and killed them or he herded them through the bottom of the canyon until the animals were trapped by high vertical walls.

Age of Lee and Other Sites

The Lee Site culture is young as compared to other sites in the Rocky Mountain area (Table 3).

A carbon-14 determination was made on a charcoal sample recovered from a fire lens at the 42-inch level in square No. J-6 (fig. 1). The age, 1020 ± 86 years B.P., was obtained through the liquid scintillation method by the Gulf Research and Development Company, Pittsburgh, Pennsylvania. Data pertaining to the charcoal sample is outlined in Table 4.

Table 3 Age of Cultures in Wyoming and Adjacent Areas

AGE (in years)	CULTURE	LOCATION
10,850 B.P.*	Hell Gap	20 miles north of Guernsey, Wyo.
9,960 B.P.	Folsom	Folsom, New Mexico
8,960 B.P.	Agate Basin	Niobrara County, Wyo.
7,960 B.P.	Scottsbluff	Scottsbluff, Nebraska
6,960 B.P.	Jimmy Allen	16 mi. south of Laramie, Wyo.
4,960 B.P.	McKean	Northeastern Wyoming
	Powers-Yonkee	Powder River County, Montana
	Bison Trap	
1,020 B.P.	Lee Site	Sec. 33, T. 41 N., R. 80 W. Natrona County, Wyo.
450 B.P.	Brown-Weiser	Sec. 13, T. 40 N., R. 87 W. Natrona County, Wyo.

* Before Present

Randall (Cont.)

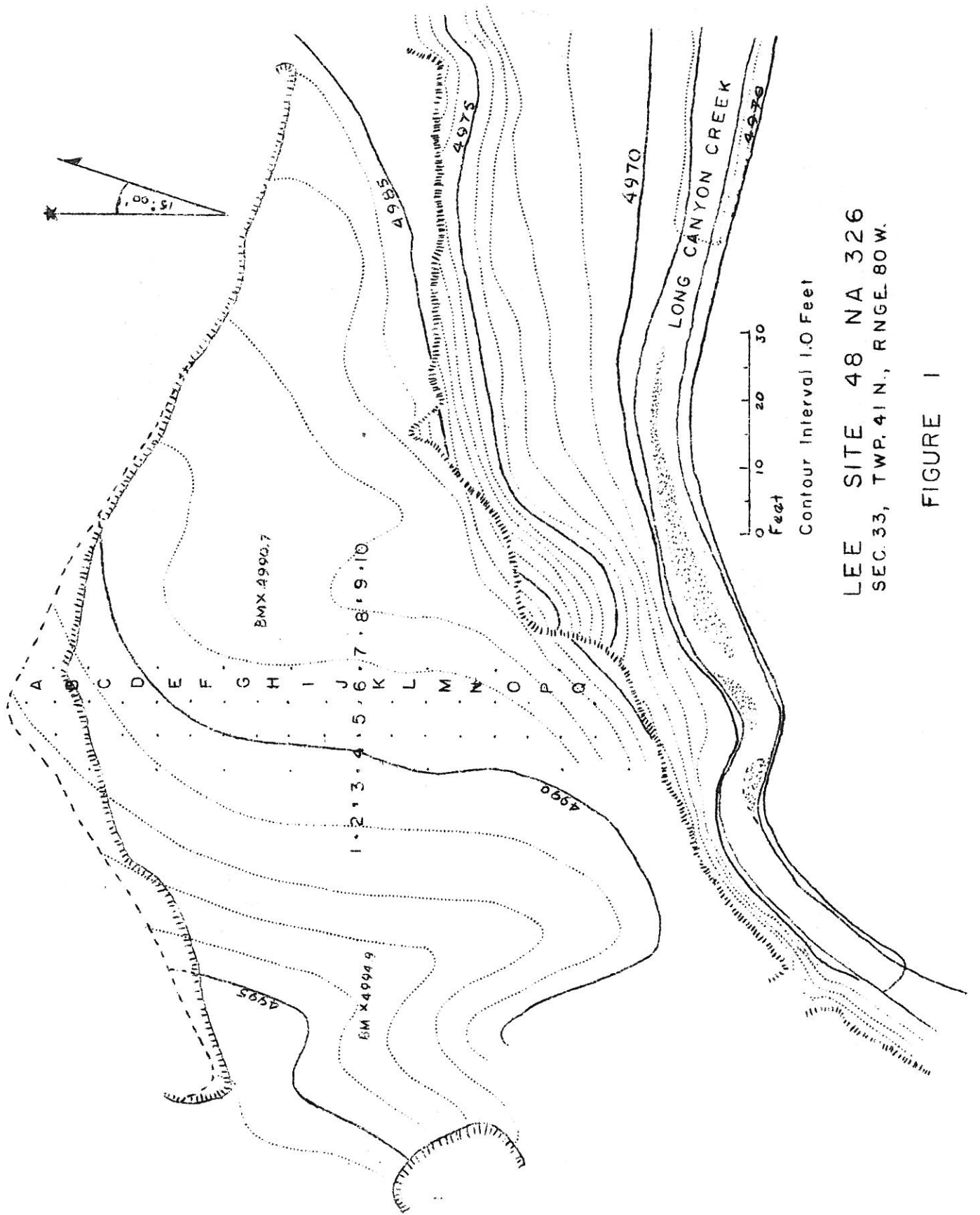
Table 4 - Carbon-14 Determination of Lee Site Charcoal Sample

Weight (CH ₃ O) ₃ B counted	6.7848	grams
Total sample count	21.89	d.p.m.*
Background sample count	7.35	d.p.m.
Net sample count	14.54	d.p.m.
Net sample count per gram carbon	6.18	d.p.m.
Net counting efficiency	49.2%	
Corrected sample count	12.55	d.p.m.
Fraction contemporary activity	0.88	
Calculated age	1020 ± 86	years

* Disintegration per minute

References

- Dama, Edward Salisbury and Ford, William E., 1898, A Textbook of Mineralogy: Fourth ed., Tenth printing, Oct. 1947.
- Grey, Don, Editor, The Wyoming Archaeologist: vol. III, No. 2, Feb., 1961; Published by Members of the Wyoming Archeological Society.
- The Wyoming Archeologist: vol. III, No. 1, Jan., 1962; Published by Members of the Wyoming Archeological Society.
- Grout, Frank E., 1940, A Handbook of Rocks: Sixth ed., Reprinted June, 1946; 300 p.
- Renaud, E. B., 1932, Stone Implements and Materials: Archeological Survey of Eastern Wyoming, University of Denver, Summer 1931, p. 40-58.
- Wormington, H. M., 1957, Ancient Man in North America; Denver Museum of Natrual History Popular Series 4, 322 p.
- Wyoming Archeological Society, Sheridan Chapter, August, 1961, The Powers-Yonkee Bison Trap 24 PR 5, 15 p.



LEE SITE 48 NA 326
 SEC. 33, TWP. 41N., RNGE. 80W.

FIGURE 1

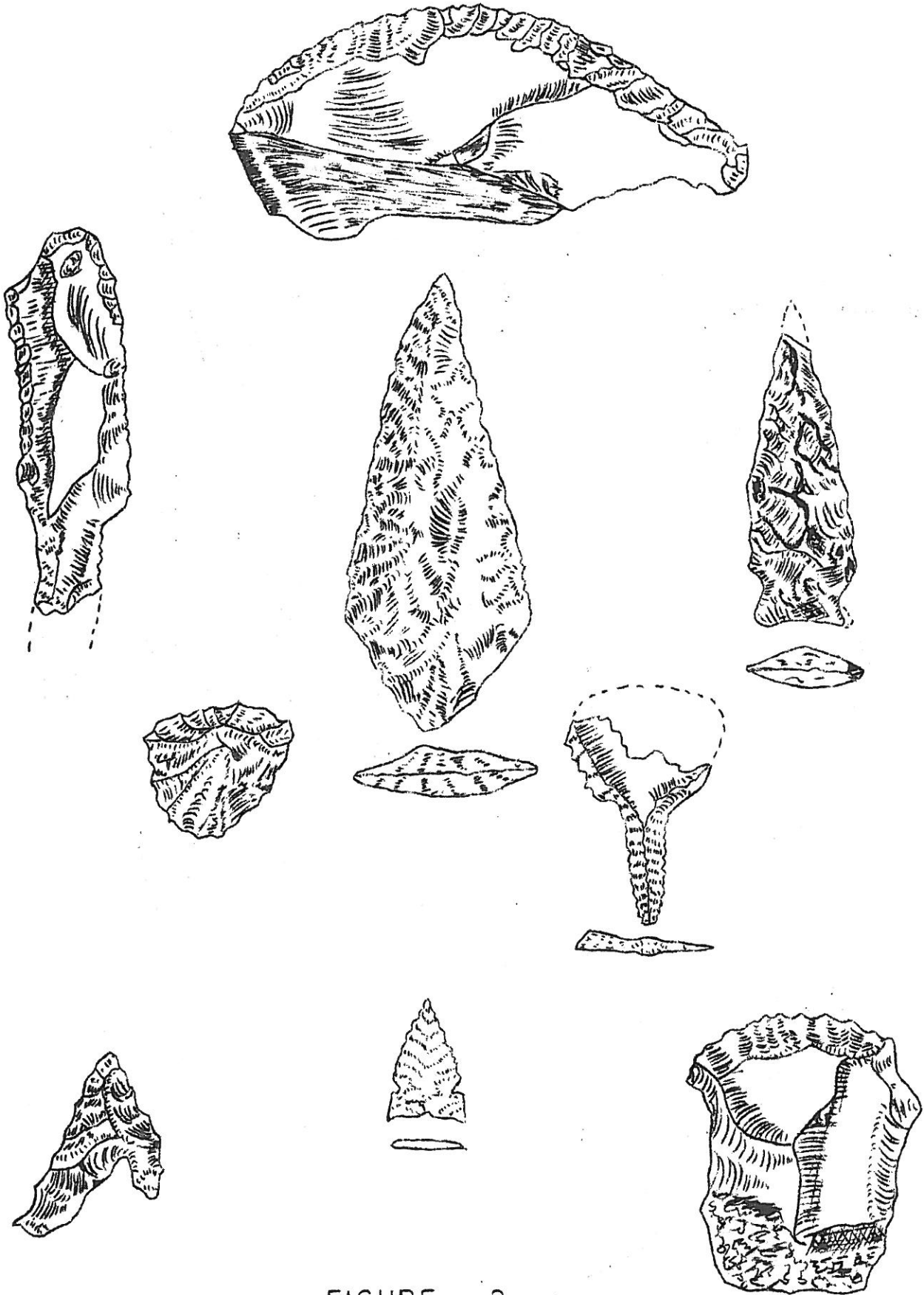


FIGURE 2

Typical Lee Site Artifacts

Belz



33



259



183



236



222



92



201



157



49



240



226



262



85

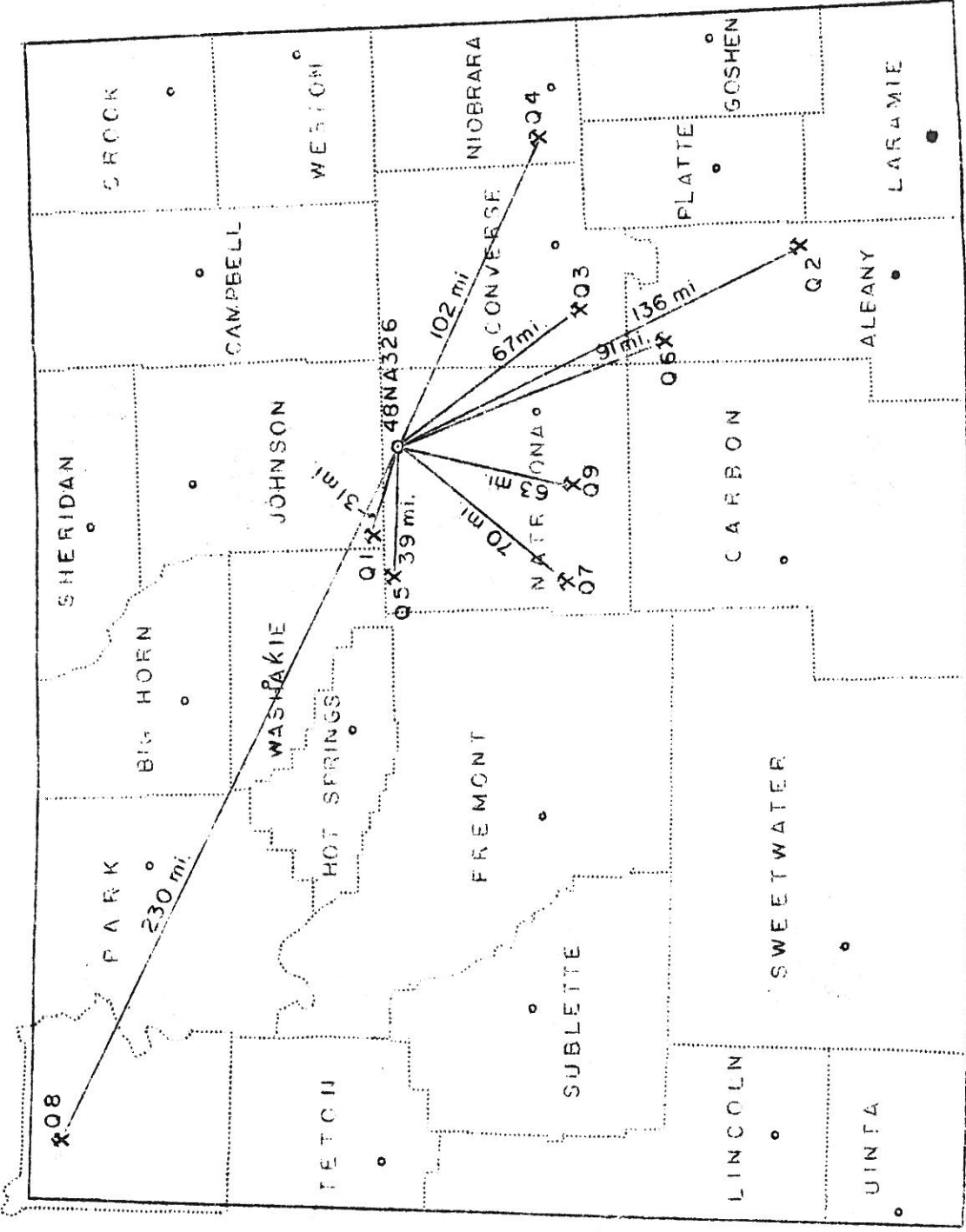


162



186

FIGURE 3
LEE SITE
Typical Points



WYOMING



XQI=Quarry No.1

FIGURE 4- QUARRY SITE MAP

THE MAHONEY BURIAL
Near Fort Laramie, Wyoming

Gene Galloway

The Mahoney Burial was uncovered by Mr. Lou Mahoney while making a septic-tank excavation about two miles northwest of the town of Fort Laramie, Wyoming. All of the skeletal material and most of the artifacts found with the burial were unavailable for the writer's inspection. The five beads were available and Mr. Mahoney described the circumstances of the burial and provided photographs of the skull and artifacts for reference.

The skeleton is believed to have been in a sitting position with the arms around or on top of the knees. The metate and other artifacts were apparently on the lap. Covering material consisted of about six inches of gravel and was undifferentiated from the surrounding terrain.

From the photographs available, the skull appears to be that of a dolichocephalic (Cephalic index about $73 \frac{1}{2}$ --??) adult males. Cranial sutures appear to be well closed with obliteration commencing and age at death is thus supposed to have been about 45 years. The maxilla and facial bones are missing. Five molar teeth, one premolar, and one canine remain in the mandible. Tooth wear is markedly advanced but the individual apparently lost no lower teeth before death. The second right incisor may have been abscessed!

The metate in the photograph appears to be a coarse sandstone slab shaped to an irregular ovoid by percussion. The remaining portion is roughly sixteen inches long and about ten inches wide at the widest part.

Two retouched flakes or scrapers are seen in the photograph (Fig. 2A). These are about two inches long.

Three small triangular projectile points are shown. The one having a complete tang and undamaged point is slightly more than one and three-eighths inches long. Notches appear to begin at the outer edges of the base rather than the corners proper, thus are not truly corner-notched.

The five beads were examined by the writer. Four of them are made of a tan, opaque material resembling calcite but only one cleavage was noted, perpendicular to the hole. These may (?) be crinoid sections. The faces and edges are smooth. The fifth bead is of a black opaque material with a jade-like luster. Hardness is 3 to 4. This is perhaps Gilsonite. All the beads are drilled, from one side only.

Mahoney Burial (Cont.)

Each is about three-eighths of an inch in diameter and one-eighth inch thick. A small round object resembling a crinoid bud is seen with the beads in the photograph.

The size and character of the projectile points and the presence of milling equipment tend to indicate that this burial occurred sometime in the later part of the Late Middle Period. (Mulloy, 1954, 1958.) Antiquity is supposed to be c.a. 2,000 years B.P.

Possible similarity is noted between the Mahoney Burial and the "Laramie Lady" (C.l. 74) (Agogino, 1961). Possibly there was no surface indication of either burial.

Agogino, George A. 1961. "A Middle Prehistoric Burial from Laramie, Wyoming." *Plains Anthropologist*, Vol. 6, No. 13.

Mulloy, William 1954. "The McKean Site in Northeastern Wyoming." *Southwestern Journal of Anthropology*, Vol. 10, No. 4, Winter, 1954.

1958. "A Preliminary Historical Outline for the Northwestern Plains." *University of Wyoming Publications*, Vol. XXII, Nos. 1 and 2.

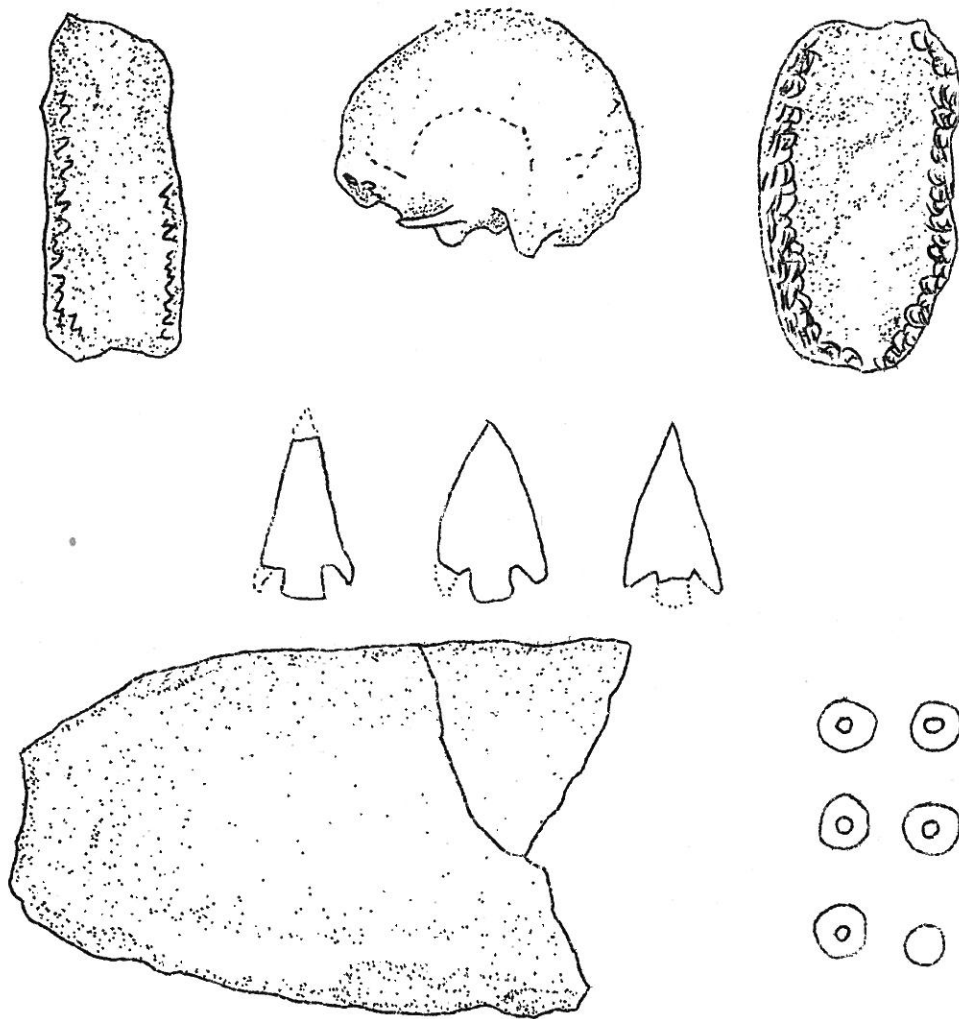


FIGURE 1
MAHONEY BURIAL

WYOMING ARCHAEOLOGICAL SOCIETY

Annual Meeting
Friendship Room - Provident Federal Savings Bldg.
Casper, Wyoming
Feb. 16, 1963

The meeting was called to order at 2:25 P.M. by President Tom Knapp, with 18 qualified voters present.

Minutes of the previous annual meeting held at Cody were read and approved. The treasurer's report was accepted.

After discussion of the Antiquities Law that had been presented at the recent State Legislature, the following Memorial was proposed, to be sent to the State Library and Historical Board, and the State Historical Society:

1. That the State Library and Historical Board and the State Historical Society be commended for their continued efforts to preserve historical and pre-historical sites and materials on all lands within the State of Wyoming.
2. That the Wyoming Archaeological Society declare its support of the State Library and Historical Board and the State Historical Society in its efforts in this regard and further urges the vigorous enforcement of existing legislation to preserve such historical and pre-historical sites and materials.
3. That the State Executive Board of WAS appoint an Antiquities Preservation Committee. The function of said Committee shall be to inquire into the state of Antiquities Legislation and its enforcement on all lands within the State of Wyoming, make all appropriate investigations and inquiries into matters affecting the preservation of such antiquities and submit its reports and recommendations from time to time to the State Executive Board.

A motion was made, seconded and carried that the State Ex. Board direct the officers who issue membership cards to inscribe thereon: "Not to be used as a credential to dig in sites", and that any cards issued heretofore be called in for the inscription.

Annual Meeting (Cont.)

Suggestions were given that the WAS and local Chapters use all available publicity to further the objectives of the Society and make the public aware of the importance of Antiquity Legislation within the State of Wyoming.

A motion was made, seconded and carried that the Constitution and By-laws be changed as follows:

Under IV. Membership, A. Qualification: #3 to read:
"All out-of-state persons may belong to a Chapter or the State Society; except that all institutions, such as colleges, universities, museums, etc., shall belong to the state society only."

Under IV. Membership, A. Qualifications: delete #5.

It was recommended by Sheridan Chapter that the Mulloy Scholarship be only awarded if there was a real need, and that perhaps, the money might be put to other uses from time to time at the discretion of the State Executive Board.

A suggestion from Dr. David Gebhard that the Dinwoody site be preserved as a National Monument was discussed, most members being in sympathy with the idea, but fully aware of the problems, since the site is on the Shoshone-Arapaho Indian Reservation.

It was proposed by Hila Gilbert that a Memorial be sent to the Tribal Council, enlisting their aid in the project, that perhaps an Honorary Membership for Mr. Shakespeare, Tribal Archaeologist, might further the cause. She will contact Mr. Shakespeare on behalf of the WAS, regarding the matter.

Tentative dates for a Summer Meeting at Meadowlark Lake on the Big Horns were set for July 20-21, or July 27-28.

Meeting recessed.

Annual Meeting (Cont.)

Election: (following recess)

President: Jim Goodwin - declined
T. J. Weber - "
David Baskett
Hila Gilbert - "

A motion was made, seconded and carried that an unanimous ballot be cast for David Baskett.

Vice President: Florence Castle - declined
T. J. Weber - "
Jim Goodwin
Elaine Hilman - "

A motion was made, seconded and carried that an unanimous ballot be cast for Jim Goodwin.

Sec.-Treasurer: Carl Belz - declined - reconsidered
Wallace Alford - "
Dick Eklund - "
Grover Phelan - "

A motion was made, seconded and carried that an unanimous ballot be cast for Carl Belz.

Tom Knapp expressed his appreciation for the fine cooperation he had had during his year as President.

Respectfully submitted,

Florence Castle
State Secretary, 1962

Following a delicious carry-in dinner by members of the Casper Chapter, the members enjoyed an address on Ethnology by Dr. Bruce MacLachlan from the University of Wyoming.

CHEYENNE CHAPTER ORGANIZED

The Cheyenne Chapter of the Wyoming Archaeological Society, Inc. was formally organized at a meeting of interested persons, on Monday, March 11, 1963. Eleven registering members constituted the organizing group and the outlook for doubling this membership in the very near future is excellent. Advance preliminary meetings have drawn good groups of persons interested in the furtherance of the aims of the Society, and it is expected that much activity will be forthcoming from the Chapter.

The business meeting included electing Mr. Grant Wilson, President Pro-Tem, and Mrs. Dorothy Tyrrell, temporary Sec.-Treasurer. Presentation of the Chapter Charter will be at a later date, when permanent officers are selected by the Chapter. It was decided the meetings would continue to be held at the Carnegie Library. Other items discussed were projects, procedures and programs of future meetings.

Guests from the Casper Chapter included Mrs. Martha Foster, Mr. A. E. Singleton, Mr. David Baskett (State President), and Mr. Carlton Belz (State Sec.-Treasurer).

The Sheridan Chapter was represented by Mr. James Goodwin, State Vice President and Editor of the Society publication, the Wyoming Archaeologist.

WYOMING ARCHAEOLOGICAL SOCIETY, INC.

Membership List

Honorary and Exchange

Dr. William T. Mulloy, University of Wyoming, Laramie, Wyoming

Dr. George Agogino, University of Wyoming, Laramie, Wyoming

Joe Medicine Crow, Lodge Grass, Montana

Wyoming State Archives, State Office Bldg., Cheyenne, Wyoming

Dr. Thomas F. Kehoe, Saskatchewan Museum, Regina, Saskatchewan

Mr. & Mrs. Irving Hays and Leonard Hays, 121 E. Walnut, Rawlins, Wyo.

Saskatchewan Museum, Regina, Saskatchewan

Archaeology in Montana, c/o Carling Malouf, Montana State Univ.,
Missoula, Montana

W. H. Over Museum, Wesley R. Hunt, Dr., Vermillion, So. Dakota

Utah Archaeology, c/o Lloyd M. Pierson, Utah Statewide Arch. Soc.,
Anthropology Museum, Univ. of Utah, Salt Lake City, Utah

Plains Anthropologist, c/o Dr. Edward B. Jelks, Dept. of Anthro-
pology, University of Texas, Austin, Texas

Katunob, c/o Dr. George Fay, Southern State College, Magnolia, Ark.

Arkansas Arch. Society Newsletter, c/o Dr. Charles McGimsey,
University of Arkansas, Fayetteville, Arkansas

Journal of the Iowa Arch. Soc., c/o Marshall McKusick, State
Univ. of Iowa, Dept. of Sociology & Anthropology, Iowa City, Iowa

Ohio Archaeologist, c/o Norman L. Dunn, 1025 S.W. St., Findlay,
Ohio

Southwestern Lore, c/o Omer C. Stewart, Hellems 22-E., Univ. of
Colorado, Boulder, Colorado

State

Sheridan College Library, Sheridan, Wyoming

Washington State Univ. Library, Serial Record Section, Pullman,
Washington

University of Wyoming Library, Laramie, Wyoming

Membership List (Cont.)

State (Cont.)

Denver Public Library, 1357 Broadwater, Denver 3, Colorado
Rock Springs Gem & Mineral Club, 81 Pine, Rock Springs, Wyo.
Los Angeles Public Library, 630 W. 5th St., Los Angeles 17,
California
Dr. H. M. Wormington, Denver Museum of Natural History,
Denver 6, Colorado
Dr. Glenn L. Jepsen, 144 Patton Ave., Princeton, New Jersey
Dr. Richard Forbis, Glenbow Foundation, 626-13th Ave., S.W.,
Calgary, Alberta
Dr. Alfred Kidder, 41 Holden Street, Cambridge 38, Mass.
Stuart Connor, 805 Midland Bank Bldg., Billings, Mont.
Emmett A. Stallcop, Sec., Milk River Arch. Society, Box 929,
Havre, Montana
Anne Powell, 705 N. 13th, Lawton, Oklahoma
Frank G. Clark, Jr., P. O. Box 297, Cheyenne, Wyo.
Mrs. Burton A. Smead, 1281 S. Downing St., Denver 10, Colo.
Donald C. Grey, 413 S. Linden, Sheridan, Wyoming
Historical Society of Montana, Mary K. Kempsey, Librarian,
Helena, Montana
Wyoming State Library, Supreme Court & State Library Bldg.,
Mrs. Rosemary Martin, Es. Sec., Cheyenne, Wyoming
Mrs. Dexter Butterfield, 61 Court St., Exeter, New Hamp.
Sherwood P. Smedley, 28 Pine St., Exeter, New Hamp.
Peabody Museum of Archaeology & Ethnology, Harvard University,
Margaret Currier, Librarian, Cambridge 38, Mass.
Mrs. Bernie Swift, 225 Daly Ave., Hamilton, Montana

Casper

Tom Thompson	1435 S. Elk St.	Casper
E. Grover Phelan	123 Riverside Terrace,	"
	Red Butte, Alcova Rt.	"

Casper (Cont.)

Wallace H. Alford	2954 Imperial Pl.	Casper
David S. Baskett	1544 Bellaire Dr.	"
Carlton W. Belz	1742 Westridge Dr.	"
Robert W. Brown		"
Helen F. Bryant	356 S. Beach	"
Richard A. Eklund	Box 1787	"
Mrs. Martha Foster	Box 14	"
Jim Fusselman	220 E. 14th	"
Roxie Gantt	475 E. Y Ave.	"
Jean Goedicke	2125 Coffman Ave.	"
Dale L. Hamlet	942 S. Wolcott	"
Marguerite Hamlet	" " "	"
Mrs. Jerald Hinthorn	1131 S. Oak	"
Ray Morgan	245 Washington	Lander
Warren N. Pearce	2021 W. Odell Ave.	Casper
Mrs. Billie Phelan	119 N. Iowa Ave.	"
Arthur G. Randall	1448 W. 29th	"
Bill Shields	418 E. 13th	"
Harold D. Shippen	213 Crescent Dr.	"
	Mt. View Add.	"
Mrs. Pauline Shippen	" " "	"
Albert E. Singleton	2405 E. 9th	"
Joseph P. Snowden	126 N. Jackson	"
Bert Striegler	2511 Navarre Rd.	"
Ross A. Swigart	146 E. C St.	"
John R. Thomson	305 Chalmers, Mt. View Add.	"
T. J. Weber	3620 S. Poplar	"
Mrs. T. J. Weber	" " "	"
Alyce Hollembaek	1428 S. Mitchell	"
Lynn Hollembaek	" " "	"
Roy A. Groves	373 Canyon St.	Lander
Irene Morgan	245 Washington	"
Mildred Zahradnicek	235 N. Durbin St.	Casper
Mary Coates	1001 - 11th St.	Rawlins
Edness K. Wilkins		Casper
Pat Culver	118 Valley Dr.	"
Mrs. Pat Culver	" " "	"
Mrs. H. S. Jackman	922 N. Hamp. Dr.	Rock Springs
Don Magnuson	1420 Cheyenne St.	Alliance, Neb.

Northern Big Horn Basin

Kay Decker	Box 1129	Cody
Sam Decker	" "	"
Mary Waller	P. O. Box 38	"
Hazel Adams	Box 295	"
Betty Breitweiser	510 N. Division	Powell
Wayne Breitweiser	" " "	"
Chester C. Castle	1438 Salsbury	Cody
Florence Castle	" "	"
Dilly Cox	1208 Rumsey	"

Northern Big Horn Basin (Cont.)

Marian Creach	Box 1209	Cody
Burton Depue		Meeteetse
Carolyn Depue		"
Ann Fields	Box 178	Powell
Ruth Grossnickle	249 N. Clark	"
Edna K. Huntley	Box 759	Cody
Harry H. Keirn	326 N. Cheyenne	Powell
A. B. Kinnan	Box 304	Cody
Louise Kinnan	" "	"
Edna Knapp	Box 759	"
Tom Knapp	" "	"
Stanley Landgren	Box 349	"
Corrie Lovercheck		Deaver
Dr. Harold McCracken	Box 1020	Cody
Cliff Merithew	596 Avenue D.	Powell
Sam Murray		Greybull
Walter Nelson	Rt. 2	Cody
Mabel Oliver	1832 Bleistein	"
Irma Patrick	1313 - 10th	"
Jack L. Robinson	Box 609	Powell
Gay Stevens	Box 559	Cody
Verne Stevens	" "	"
Ruby Weimer	Belfry, Montana	
Ruth Lewis	1635 S. Washington	Casper
Bob Will	519 E. Circle Dr.	Cody
Shirley Will	" " " "	"
Jeanette McNeely	1021 - 12th	"
Ed McNeely	" "	"

Sheridan

Louis Allen	Sheridan College	Sheridan
Jim Bell	Box 150, N. Fork Rt.	Lander
Ray Bentzen	Box 795	Sheridan
Mrs. Ray Bentzen	" "	"
Chuck Bentzen	" "	"
Bud Campbell	Rt. 1	"
Elizabeth Carlson	655 Lewis	"
Thelma Condit		Buffalo
Mrs. Frank Eads	911 Emerson	Sheridan
Don Eckerson		Big Horn
Donna Eckerson		"
Byron Elmgren	219 N. Main	Sheridan
Henrietta Exon	485 Coffeen	"
Leo E. Davis	Box 1221	"
Ania Deininger		Buffalo
R. E. Frison		"
Hila Gilbert	961 Delphi	Sheridan
James Goodwin	Rt. 1	"
Dorothy Goodwin	" "	"
Deyo Hasbrouck	1665 Warren	"
Vivienne Hesse		Buffalo

Sheridan (Cont.)

Alice Hilman		Big Horn
Fred Hilman		" "
Zane Hilman	SW	Sheridan
Elaine Hilman	"	"
Ruth Johnson	133 W. 6th	"
A. M. Kester		Buffalo
Mary Kusel	Hokana Hall, Zuni 353	
	Albuquerque, New Mexico	
Hans Kleiber		Dayton
Mrs. Hans Kleiber		"
Louis La Tousch		"
Frances Nantkes	658 Monte Vista	Sheridan
Harold Newton-	Jersey Creamery	"
Harvey Rhoads	Rt. 1	"
Margaret Powers		Big Horn
Dr. Frank Roberts	Smithsonian Inst.	
	Washington, D. C.	
William Sand		Buffalo
Mrs. William Sand		"
Alice Stolcis	Rt. 1	Sheridan
Ronald Stolcis	" "	"
Louis Steege	118 E. 2nd Ave.	Cheyenne
Clara White		Big Horn
Mrs. Wailes Wolf		Wolf
Helen Worden		Clearmont
Pauline Yost		Ten Sleep
Lyle Ramsbottom	Meadowbrook Ranch	Buffalo
Dale Jacobson	Box 288	Sheridan
Otto Nelson		Jackson
Archie Leland		Dayton
John Masters		"
Grant H. Wilson	1915 E. 15th	Cheyenne

Cheyenne

Grant Wilson	1915 E. 15th St.	Cheyenne
Mrs. Dorothy Tyrrel	5010 Seminoe Rd.	"
Jack Russell	1841 E. 21st St.	"
Mrs. Alice Demarest	3317 Stevens Dr.	"
Don Sigler	Gen. Delivery	"
Mrs. F. O. Sigler	" "	"
Ralph Casner	818 Johnson	"
Anita Graves	1859 Milton Dr.	"
Albert Sigward	5314 Syracuse	"
Gerrold Wheeler	1605 E. 16th St.	"
Don Alexander	205 W. 26th St.	"