

---

Insured: Garage Office

Claim Rep.: Terence Medley

Estimator: Terence Medley

**Claim Number:**

**Policy Number:**

**Type of Loss:** <NONE>

Date of Loss:

Date Received:

Date Inspected:

Date Entered: 8/9/2012 1:35 PM

Price List: KYPA8X\_SEP13

Restoration/Service/Remodel

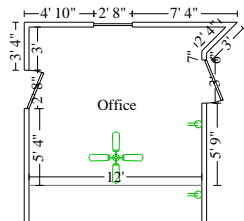
Estimate: GARAGE\_OFFICE

**GARAGE\_OFFICE**

**Main Level**

**Main Level**

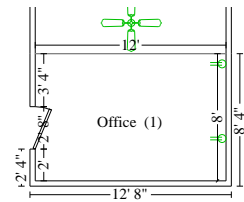
DESCRIPTION	QUANTITY	UNIT PRICE	TAX	RCV	DEPREC.	ACV
5. (Material Only) 2" x 4" x 14' #2 & better Fir / Larch (material only)	3.00 EA	5.96	1.07	18.95	(0.00)	18.95
7. (Material Only) 2" x 4" x 92 5/8" pre-cut stud (for 8' wall, mat only)	18.00 EA	2.72	2.94	51.90	(0.00)	51.90
8. (Material Only) 2" x 4" x 8' #2 & better Fir / Larch (material only)	5.00 EA	2.72	0.82	14.42	(0.00)	14.42
10. (Material Only) Labor to frame 2" x 4" non-bearing wall - 16" oc	264.70 SF	0.02	0.32	5.61	(0.00)	5.61
25. (Material Only) Batt insulation - 4" - R11	237.17 SF	0.29	4.13	72.91	(0.00)	72.91
27. (Material Only) 2" x 4" x 10' #2 & better Fir / Larch (material only)	6.00 EA	3.98	1.43	25.31	(0.00)	25.31
28. (Material Only) 2" x 4" x 104 5/8" pre-cut stud (for 9' wall, mat only)	8.00 EA	3.98	1.91	33.75	(0.00)	33.75
<b>Total: Main Level</b>			<b>12.61</b>	<b>222.84</b>	<b>0.00</b>	<b>222.84</b>



**Office**

**Height: 9'**

345.16 SF Walls	133.38 SF Ceiling
478.54 SF Walls & Ceiling	133.38 SF Floor
14.82 SY Flooring	36.35 LF Floor Perimeter
48.35 LF Ceil. Perimeter	



**Subroom: Office (1)**

**Height: 7' 6"**

210.00 SF Walls	96.00 SF Ceiling
306.00 SF Walls & Ceiling	96.00 SF Floor
10.67 SY Flooring	28.00 LF Floor Perimeter
40.00 LF Ceil. Perimeter	

**Missing Wall**

**12' X 7' 6"**

**Opens into OFFICE**

DESCRIPTION	QUANTITY	UNIT PRICE	TAX	RCV	DEPREC.	ACV
14. (Material Only) Paneling	784.54 SF	0.78	29.18	641.12	(0.00)	641.12
15. (Material Only) Finish wood siding - 1 coat urethane Walls & Ceiling	784.54 SF	0.18	8.47	149.69	(0.00)	149.69
16. (Material Only) Baseboard - 3 1/4" MDF - flat profile	64.35 LF	0.75	2.90	51.16	(0.00)	51.16
17. (Material Only) Paint baseboard - one coat	64.35 LF	0.00	0.00	0.00	(0.00)	0.00
18. (Material Only) Trim board - 1" x 2" - installed (pine)	88.35 LF	0.74	3.92	69.30	(0.00)	69.30
19. (Material Only) Paint trim - one coat	88.35 LF	0.00	0.00	0.00	(0.00)	0.00

**CONTINUED - Office**

DESCRIPTION	QUANTITY	UNIT PRICE	TAX	RCV	DEPREC.	ACV
23. (Material Only) Joist - floor or ceiling - 2x4 - w/blocking - 24" oc	96.00 SF	0.33	1.90	33.58	(0.00)	33.58
24. (Material Only) Rigid foam insulation board - 3/4"	229.38 SF	0.50	6.88	121.57	(0.00)	121.57
32. (Material Only) Ceiling fan & light - Standard grade	1.00 EA	57.42	3.45	60.87	(0.00)	60.87
36. (Material Only) Finish wood siding - 1 coat urethane	458.76 SF	0.18	4.95	87.53	(0.00)	87.53
<b>Totals: Office</b>			<b>61.66</b>	<b>1,214.83</b>	<b>0.00</b>	<b>1,214.83</b>
<b>Total: Main Level</b>			<b>74.27</b>	<b>1,437.67</b>	<b>0.00</b>	<b>1,437.67</b>
<b>Line Item Totals: GARAGE_OFFICE</b>			<b>74.27</b>	<b>1,437.67</b>	<b>0.00</b>	<b>1,437.67</b>

**Grand Total Areas:**

555.16 SF Walls	229.38 SF Ceiling	784.54 SF Walls and Ceiling
229.38 SF Floor	25.49 SY Flooring	64.35 LF Floor Perimeter
0.00 SF Long Wall	0.00 SF Short Wall	88.35 LF Ceil. Perimeter
229.38 Floor Area	251.39 Total Area	555.16 Interior Wall Area
632.84 Exterior Wall Area	67.68 Exterior Perimeter of Walls	
0.00 Surface Area	0.00 Number of Squares	0.00 Total Perimeter Length
0.00 Total Ridge Length	0.00 Total Hip Length	

---

**Summary for Dwelling**

Line Item Total	1,363.40
Material Sales Tax	74.27
<b>Replacement Cost Value</b>	<b>\$1,437.67</b>
<b>Net Claim</b>	<b>\$1,437.67</b>

---

Terence Medley