

Last call to register for November Break Chess Camps November 12 & 13 at Greenfield Hall

Camp details and enrollment form on Page 3 • Camp Commando Chess Tournament Wednesday 1 p.m. open to others!

# Roving ChessNuts CHESS Teasers



NEWS, RESULTS, UPCOMING EVENTS, PHOTOS AND INTERESTING STUFF  
MAINLY ABOUT SCHOLASTIC CHESS IN EDMONTON & CHESSNUTS ACTIVITIES

Volume 12, Issue 5 • November 10, 2019

Check out [www.rovingchessnuts.com](http://www.rovingchessnuts.com) for updates between issues of Teasers



Section C Players

3rd Annual  
**Richard  
Roberts  
Memorial  
Chess  
Tournament**

More Photos,  
Full Results  
on Page 2



Size and Age  
are not always  
factors in playing  
good chess

Over 50 players had  
their chess ratings go up  
or down at this event

Richard Roberts 3rd Annual Memorial Chess Tournament



Siddhartha Chitrakar, a Grade 11 student and highest rated in the tournament, had to share first place with rising chess star Tri Tran, Grade 3. Both got perfect scores in four regular rounds of play. They split the prize fund and each earned \$70.

But a tiebreak game to determine possession of the first place trophy ended in a draw and had to be followed by a blitz tiebreak (5-minutes per clock) and led to Tran taking the trophy home.

For the first time, two names will share the plaque on the tournament's display trophy.

Don't miss the biggest chess treat of the year ...

## Santa's Scholastic Chess Tournament Sunday afternoon, December 8

Round-robin competition for all levels of scholastic players (K-12) at Greenfield Hall, 3803 114 Street

Every player will get either a trophy or chess medal in competition plus holiday treat bag

Cash prizes for Sections A, B & C (players expected to be rated over 800)

Entry \$25 [\$15 and \$10 for other player(s) same family] paid prior December 1. Additional \$5 after

Reserve your spot now by e-mailing name(s), school and grade: [rovingchessnuts@shaw.ca](mailto:rovingchessnuts@shaw.ca)

Online registration will start Saturday, November 9. Call weekdays 780-474-2318 to enter and pay by credit card.

Lots of  
Draw Prizes  
All Players Eligible



# Results of 3rd Richard Roberts Memorial Scholastic Chess Tournament

Organized by Roving ChessNuts, Directed by Derek Thomas, Bruce Thomas and Eskay Ilori  
 Assisted by Junior Leaders Siddhartha Chitrakar, Pascal LaCroix, Vincent Yang, Tetyana Shelevach

## Section A Results

Over 799 rating

**Tied overall 1-2:** Sidhartha Chitrakar and Tri Tran, 4.0 each (Tri wins bigger trophy on tiebreak, both split \$140 prize fund and both named on Memorial display trophy).

**Top under 1000 ratings Tied:** Paris Dorn and Matteo Schlack, 3.0 each (Both receive trophies and split \$80 prize fund).

**Other 3.0 scores:** Eric Jin, Shreyas Prasanna, Pascal LaCroix and Terry Li.

**2.5 score:** Vincent Yang.

**2.0 scores:** Sam Hoekman, Tetyana Shelevach, Pascal LaCroix, Kai Riley, Leo Marsten, Jarek Walker, Andrew Wang, Linus Jin and Manny Perla.

**1.5 Scores:** Dana Lee and Taylor Henning.

**1.0 Scores:** Ryan Chen, Leo Marsten, Devin MacDougall, Viktor Merritt, Caleb Menard and Joshua Johnson.

**0.5 Score:** Caleb Casorso.

## Section B Results

500 to 799 rating

**First by Tiebreak:** Jotis Kung, 3.0 (then tiebreaks over Second and Third).

**Second by Tiebreak:** Carter Stokes, 3.0 (but won against Third).

**Third by Tiebreak losses:** Sophia Zhao, 3.0 (Tied for Top Female in tournament).

**2.5 Scores:** Daniel Strungaru and Nathan Huynh.

**2.0 Score:** Aiden Lee.

**1.5 Score:** Jothymius Kung.

**1.0 Scores:** Zachary Li and Miles Zacharko.

**0.5 Score:** Carmen Ma.

## Section C Results

Under 500 rating

**First:** Eli Christensen, 4.0.

**Second by Tiebreak:** Kyle Tang, 3.0.

**Third by Tiebreak loss:** May Li, 3.0 (Tied for Top Female in tournament).

**Fourth by Regular Round Loss:** Peter Semagin, 3.0.

**2.5 Score:** Kyle Ma.

**2.0 Scores:** Joshua Kung, Andrew Semagin, Jonathan Wang and Kiyaan Bhanji.

**1.5 Scores:** Erick Zhao and Isabella Lu.

**1.0 Score:** Henry Jung.

**0.5 Scores:** Enzo Chao and Ryan Stringer.

Event rated by Chess'n Math Association

## About 30% of tournament's players were junior/senior high

More keen elementary players are raising their Chess'n Math ratings to more competitive levels and more junior and senior high players are attending tournaments.

At last Sunday's tournament, almost 30% of the entrants were from Grades 7 to 12 with seven having the most (six) and Grade 10 having the least (zero). More junior and senior high students are now involved in both school chess programs or classes outside of schools than have been in the past six years or so.

With more older players now involved and some of the younger elementary-age tournament players having their shelves full of trophies and chess medals, open scholastic tournaments rated by Chess'n Math are returning to a previous practice of offering cash prizes in the upper sections of play.

Lower-rated sections of play will still get trophies and chess medals, but there will be a change in tournament draw prizes. Players involved in sections offering cash prizes will not be eligible to win draw prizes. Draw prizes will only be offered to the lower sections of competition and usually be more suitable for elementary-age or beginning level players.



Above Section B Runners-Up  
 Right, Section B - top finishers



**Due to Remembrance Day weekend plans of several families wanting a Family Chess Workshop, we have postponed Family Chess Workshop on Sunday, November 10, to Sunday, November 17**

The workshop, 12 Noon to 2 p.m. invites students with at least one parent to learn how to learn and play chess together at home. This event will be particularly good for beginning chess players in school programs, needing help at home, but having no one to practice with. The workshop will be held at the Roving ChessNuts training facility, 12019 76 Street. Fee will be \$5 per person; snack & juice will be served.

**Limited seating and some seats already reserved - Please e-mail [rovingchessnuts@shaw.ca](mailto:rovingchessnuts@shaw.ca) to reserve your seats or for more details**

### Only a few spaces left at November school break camps

Please call or e-mail to reserve your seats for November 12 and 13 camps! rovingchessnuts@shaw.ca

## Meyonohk wins school team sub-event at Roberts Memorial Tournament

At the Richard Roberts Memorial Scholastic Chess Tournament at Greenfield Hall on Sunday, November 3, the elementary team with the highest-rated players, Windsor Park, fell victim to very strong competition in their individual sec-

tions of play and came in last.

Meyonohk took first place in the team sub-event by having players spread throughout the three sections of individual play.

Terry Li in Section A and Jotis Kung in Section B each got three points.

Combined with Kyle Ma in Section C getting 2.5, the Meyonohk tally of 8.5 edged out the George P. Nicholson School (GPN) by a half point.

GPN got two 3-point performances from Peter Semagin and Kyle Tang in Section C, and the four other players - Kai Riley and Jarek Walker in Section A, and Andrew Semagin and Jonathan Wang in C - each got two points. (Only the top three scores of players from the same school team counted.) GPN's total was 8.0.

Stratford Elementary was third in the team standings with 6.5 points. Sophia Zhao in Section B contributed 3 points and also won a trophy in a tie with May Li of Richard Secord School for being the top female players among the 51 entrants of both genders.

Stratford's other point makers were Aiden Lee, 2.0 in Section B and Dana Lee and Erick Zhao who each got 1.5.

Fourth-place Windsor had four of its five representatives in the very competitive Section A where Eric Jin managed to score 3 points, but teammates Linus Jin, Ryan Chen and Joshua Johnson were only able to get one victory each worth only two team points. Windsor ended up with just 5.

The school team sub-event at this tournament was just a warm-up for one or two school team matches in the new year where the format will be schools going head-to-head with their best players.

In these future events, Windsor might get revenge as it currently has the most higher-rated players, followed by GPN, then Meyonohk and Stratford.

There will also be other schools in future team competitions. In late winter and spring, more schools are likely to have eager players ready to represent them in competitions.



### Chess & Fun during November School Break (Tues & Weds)

## Full or Half day Chess and Fitness Camps November 12 & 13, 2019

Greenfield Community Hall 3803 114 Street

Chess Learning and Playing with Fitness Activities between games (healthy a.m. & p.m. snacks)

8:30 a.m. to 5:00 p.m. (Drop-off early as 8; pick-up by 5:15) • Students must wear runners and exercise wear for indoor and outdoor

Students Grades 1 to 9 invited to Full Day or Half Day (8:30 to 12:30 or 1 to 5) - full day must bring lunch

All levels of chess\* • Call or text 780-554-7280 on camp days

FULL DAY Camp \$50.00

TWO FULL DAY Camp \$90.00

15% OFF 2nd Fee same family



HALF DAY Camp \$30.00

TWO HALF DAY Camp \$52.00

5% GST must be added

Register for these camps by e-mail rovingchessnuts@shaw.ca, phone 780-474-2318, at 12015 76 Street, or at Roving ChessNuts school programs or classes and tournament outside of schools

Additional Feature: Wednesday afternoon camp, Nov. 13, 1 p.m. to 4 p.m., will have a Commando Chess Tournament (chess games followed by fitness contests) which will be free to anyone attending full day camp(s), \$10 for half-day campers and \$25 for non-camp players. Trophy and medals awarded for both chess and fitness. Any entrant not involved in the camp must be an experienced tournament player of any rating. E-mail your name to rovingchessnuts@shaw.ca to enter before 9 p.m. Tuesday.

If you require more information or have questions, please call 780-474-2318 or e-mail rovingchessnuts@shaw.ca; stay updated at www.rovingchessnuts.com

### Registration for Commando Chess Camps Please print clearly. Fill in a sheet for each student. November School Break Nov. 12 & 13, 2019 at Greenfield Hall, 3803 114 Street

Circle Your Choices:

Full Day November 12 8:30 a.m. to 5 p.m. \$50

Half Day November 12 8:30 to 12:30 or November 12 Half Day 1:00 to 5:00 \$30

Full Day November 13 8:30 a.m. to 5 p.m. \$50

Half Day November 13 8:30 to 12:30 or November 13 Half Day 1:00 to 5:00 \$30

Both Full Days 8:30 a.m. to 5 p.m. \$90

15% OFF 2nd Fee same family Use 2nd sheet & attach to this one

Both Half Days 8:30 to 12:30 or Both Half Days 1:00 to 5:00 \$52

Name: \_\_\_\_\_ Grade: \_\_\_\_\_ Birthdate (M/D/Y): \_\_\_\_\_

Phone: \_\_\_\_\_ E-mail for updates and notices: \_\_\_\_\_

(NOT shared and used only for scholastic chess purposes)

Address: \_\_\_\_\_ City: \_\_\_\_\_ Postal Code: \_\_\_\_\_

Emergency Contact number(s) during camp: \_\_\_\_\_

Name: \_\_\_\_\_

Any information that instructor and supervisors should know about the student (severe allergies, learning difficulties, etc.)

If third member of family is attending, please ask for a quote.

5% GST must be added

CALCULATED AMOUNT OF CAMP FEES OR INVOICE AMOUNT: \$ \_\_\_\_\_

Cheques preferred, payable to: Roving ChessNuts

Cheque attached \_\_\_\_\_ Credit Card # \_\_\_\_\_ Expires: \_\_\_\_\_

If enrolling an additional child, please put registration forms together and issue one cheque or one card payment.

Roving ChessNuts, 12015 76 Street, Edmonton, Alberta T5B 2C9

Confirmation and Payment of camp attendance can be made by phoning 780-474-2318 Monday to Friday, 8:30 a.m. to 4:30 p.m. or mail completed form with cheque to Roving ChessNuts, 12015 76 St., Edmonton, AB T5B 2C9 or hand in at chess class in envelope

Commando Chess Tournament Wednesday open to campers & experienced tournament players of any rating See above

### Some of the Section A Silver Medalists



Thanks to all who contributed to the 3<sup>rd</sup> Annual Richard Roberts Memorial Chess Tournament. The event was organized by The Roving ChessNuts and directed by Derek Thomas, Bruce Thomas and Eskay Ilori. Junior Leaders and Coaches Siddhartha Chitrakar, Pascal LaCroix, Tetyana Shelevach and Vincent Yang assisted, along with registrar Patricia Thomas. Thanks to many parents who also helped with set-up and take-down.



Section A Gold Medalists

### Famous Player advice

“The best possible result comes if you can focus only on the board before you, and be completely in the present”

*Grandmaster Judit Polgár*

### Wikipedia on Polgár

Judit Polgár (born July 23, 1976) is a Hungarian chess grandmaster. She is generally considered the strongest female chess player of all time.

Since September 2015, she has been inactive.

In 1991, Polgár achieved the title of Grandmaster at the age of 15 years and 4 months, at the time the youngest to have done so, breaking the record previously held by former World Champion Bobby Fischer.

She was the youngest ever player to break into the FIDE Top 100 players rating list, ranking No. 55 in the January 1989 rating list, at the age of 12.

She is the only woman to qualify for a World Championship tournament, having done so in 2005.

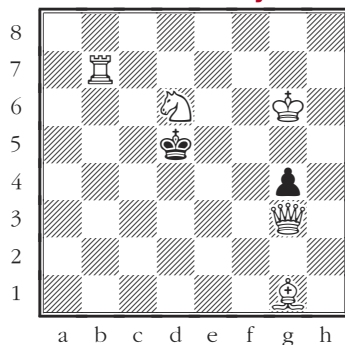
She is the first, and to date only, woman to have surpassed 2700 Elo, reaching a career peak rating of 2735 and peak world ranking of No. 8, both achieved in 2005.

She was the No. 1 rated woman in the world from



January 1989 until the March 2015 rating list, when she was overtaken by Chinese player Hou Yifan; she was the No. 1 again in the August 2015 women's rating list, in her last appearance in the FIDE World Rankings.

### This issue's Tricky Puzzle - White to Move & Checkmate in Two

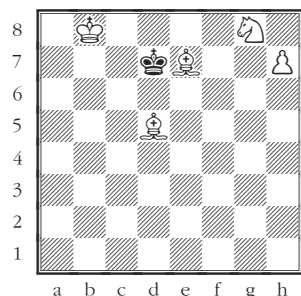


You have to be prepared to checkmate in four different ways!

1. White \_\_\_\_\_ Black \_\_\_\_\_ White \_\_\_\_\_
2. White \_\_\_\_\_ Black \_\_\_\_\_ White \_\_\_\_\_
3. White \_\_\_\_\_ Black \_\_\_\_\_ White \_\_\_\_\_
4. White \_\_\_\_\_ Black \_\_\_\_\_ White \_\_\_\_\_

Puzzle from CHESS 5334 Problems, Combinations by László Polgár, father of Grandmaster Judit.

### Answer to Puzzle in October 21 issue of Chess Teasers



White Move **h8 = N**  
 Black Move **Ke8**  
 White Move **Bc6#**

### White to Move and Checkmate on Second Move

In solving puzzles, always look for all the ways the enemy king can escape from checks or squares it can move to. In this puzzle, the black king is surrounded and restricted to movement to only one square (e8) and if it moves to it, it could then escape (to f7) if Bc6+. So white has to cover f7 first with a pawn promotion!

Watch for puzzle contest that offers a chess clock for prize



**Tournament Chess Pieces with pouch & vinyl board**

**RC student price: \$23<sup>00</sup>+GST = \$24.15**

Available at **Roving ChessNuts**

12015 76 Street, Edmonton  
 780-474-2318

Also available at Greenfield Hall classes & tournaments

These pieces are used in classes and tournaments; Green squares on board, red or blue pouch. Reg. price 29<sup>95</sup>

### We are Hiring for Part-Time Chess Supervising

Roving Chess Nuts are looking for adults, perhaps retired people with teaching experience or post-secondary students, who under contract can supervise chess classes or clubs in schools or other venues. A good knowledge of chess and some tournament experience would be an asset; the ability to work with elementary and/or junior high students is essential. A police check is required. Locations in Edmonton and surrounding communities.

Part-time assignments are during school days, weekday evenings and weekends. Assignments are usually weekly during the school year and can last up to 12 weeks or throughout most of the school year.

E-mail message of interest and resume to: [rovingchessnuts@shaw.ca](mailto:rovingchessnuts@shaw.ca)