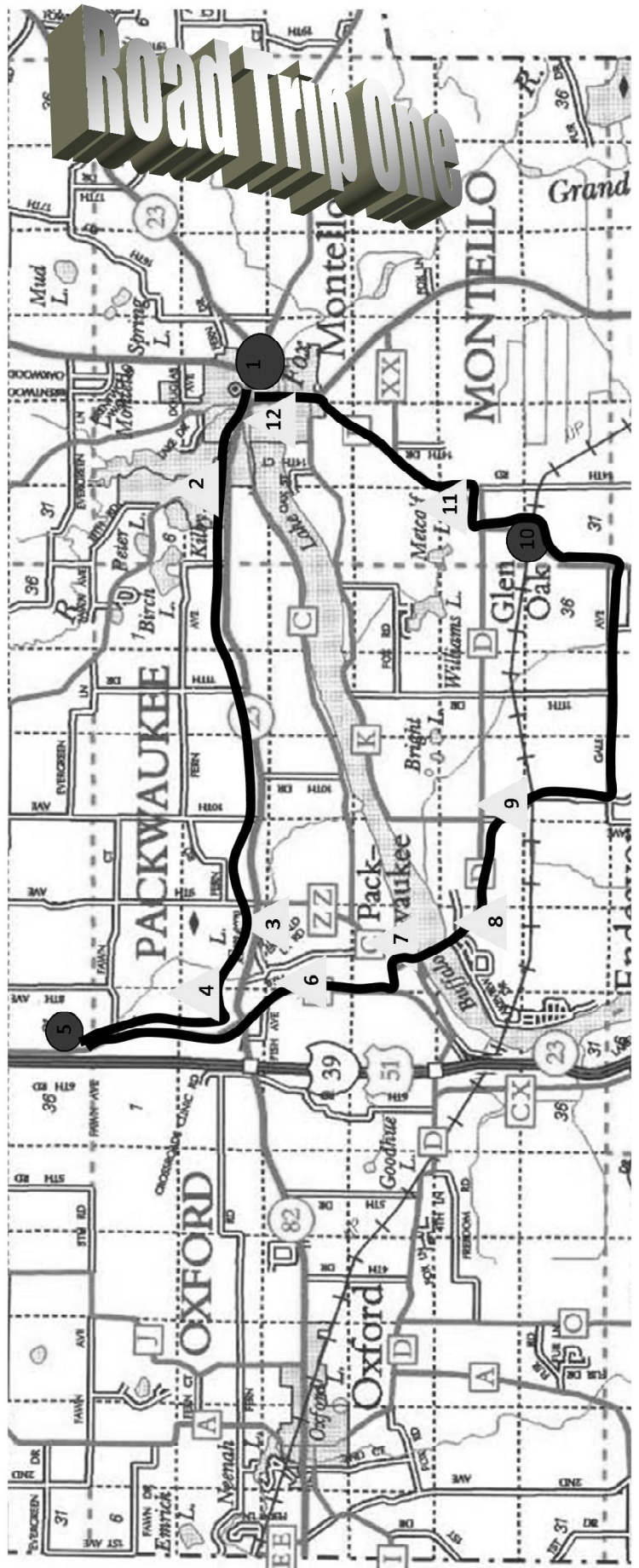


1. Leave Montello
2. Look to the right as you pass County Road B and you'll see Montello Lake, right where EW Underwood had his cranberry bogs about 1890.
3. On the south side of Highway 23 is Emery Lake. This lake is formed by a dam that at one time had a mill. You are crossing right over a spot where archeologists discovered evidence of an Indian encampment when they did work on the road.
4. Just up County Road M on the right hand side (east) is what was originally the Stalker one room school house.
5. Brakebush was started in 1925 and is still owned by the same Marquette County family.
6. Look for the farm on the west of county road M right after you cross State Highway 23. The Riesens live there now. There used to be a small DX gas station right by the farm when road trips were an adventure and old Highway 51 went past the farm.
7. Slow down in historic Packwaukee, the oldest settlement in Marquette County. For thousands of years, Indians lived at the Packwaukee area. Cross Buffalo Lake which is a wide part of the Fox River. First there was a ferry to cross the river, then different bridges, and now the man made causeway. Look to the west and see the very long, historic railroad bridge.
8. Another area that was rich with Indian villages and ceremonial sites on both sides of the road. Then, on the right, you'll see Bison Ridge Ranch and if we're lucky, there may be some Bison (not buffalo) in the field. The early explorers mistakenly called American bison buffalo because they look like water buffalo in Asia, but they are bison.
9. Two things to look for here. First, Underhill Cemetery has many early settler graves including that of Cinderella Jones! Then, as you turn right to go over the railroad bridge, look at the house on the left. That used to be Frink School, a one room school house now remodeled into a home. Don't forget to take a good look at the Union Pacific rail road tracks. It was built in 1911 as the Chicago & Northwestern and you'll be crossing the tracks again today.
10. Welcome to Glen Oak, another successful and long-lived Marquette County business. This is also the site of what was the Glen Oak rail road depot. People used to ride the train from here to Milwaukee or to Adams and back in a day to shop.
11. This whole area around Glen Oak is very historic. The house before the tracks was a store and feed mill for many years. The blue house on the left after the tracks was the railroad section foreman's house and the one on the hill after the curve is a Sears and Roebuck house brought in by train and put together here. It was for the Depot Agent of the railroad.
12. As you come into Montello, take a look at the dam and lock channel on the left. The Montello and Fox Rivers join here and once locks let steam boats and barges travel down and up the Fox River.



Road Trip Fun Facts

Montello Lake was once partly a cranberry bog.

—5 quarts of Underwood's cranberries for 25 cents 21½ pounds granulated sugar to sweeten them with, for \$1.00. 5 pounds choice prunes, or 5 pounds dried pears for 25 cents at the Cheap Cash Store.



That's Mr. Underwood with his big squash.

The ad for cranberries above was in the Montello paper in 1897. Underwood shipped some of his cranberries on the steam ships that travelled on the Fox River through the locks in Montello that no longer operate but you can see the old lock channel in Montello. Underwood's house was where the Bay View Resort is now located. He did all kinds of interesting things like stocking fish in Buffalo Lake and planting lotus plants in Buffalo and Montello Lakes. Cranberries grew wild in the wetlands and bogs in Marquette County. They were used by Indians and settlers in Marquette County probably learned many ways to use cranberries from these first people. The Pilgrims learned about cranberries from the Native Americans and that knowledge came with later settlers as they moved west. Wild cranberries are smaller and taste differently from the ones that are grown today, but the wild cranberries still grow in Marquette County bogs and wetlands.

Look at the map and list the names of the municipalities this road trip takes you through. Remember, there are cities, villages and towns. This is a little tricky. Look closely at where Brakebush Brothers is located.

- 1.
- 2.
- 3.
- 4.



The roads in Marquette County have changed over the years. They've been renamed and even moved. Once they were only sand tracks and then were surfaced in gravel. Some were even made out of wood. Remember the road that young John Muir helped to build out of tamarack logs was called a corduroy road. That is still a road here in Marquette County, but now covered by asphalt. If you are following along on the map and travelling south of Brakebush, you'll be driving on old Highway 51. The highway was moved when first it was improved and then Interstate 39/51 was built. Moving the highway meant that many communities along the old highway 51 grew smaller and businesses closed because no one stopped to eat, shop and get gas anymore in towns like Endeavor and Packwaukee. You could travel from New Orleans, Louisiana to Hurley, Wisconsin on old highway 51 and still can do that on the new Interstate which is 30/51 through Marquette County. They even had to move some pioneer graves when they built the new 39/51.

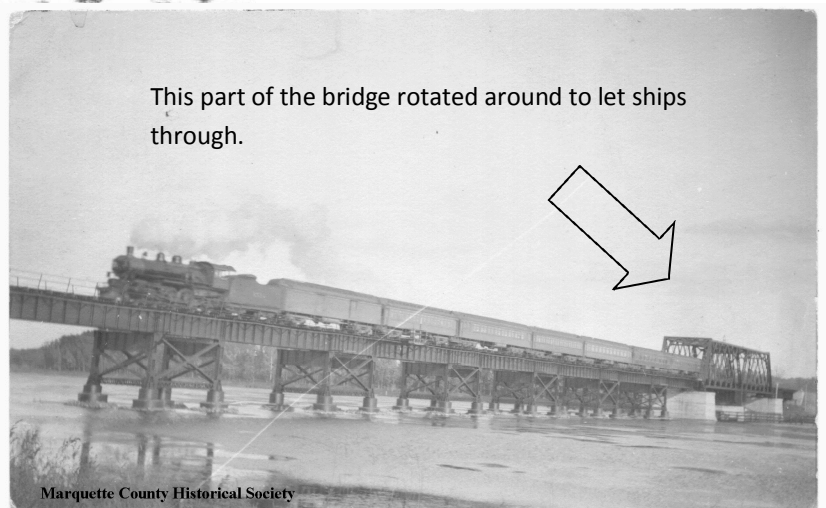
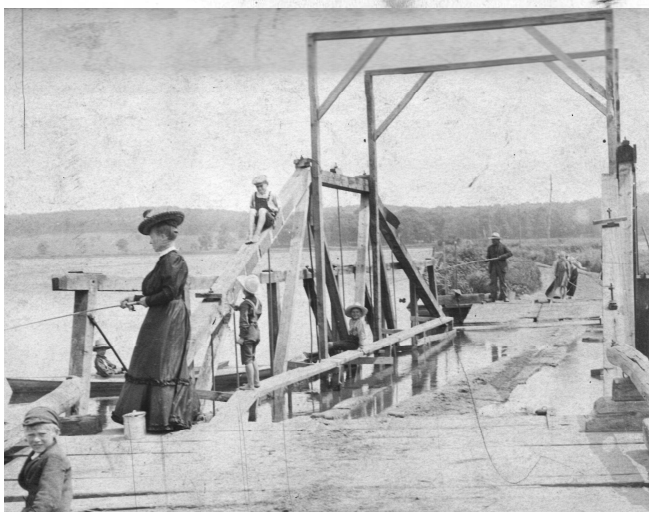
Keep following on the map and you'll come to Packwaukee and the causeway that travels over the Fox River/Buffalo Lake. Below are photos of the causeway at different times in history. Remember, that the Fox River used to flow freely before it was dammed and the only way across was by canoe, boat or ferry before bridges and roads were built.

The bridges had to be lifted up or rotated for boats/ships to pass through.

The railroad bridge photo shows a train going across the big bridge over Buffalo Lake/Fox River at Packwaukee. The middle part rotated to let ships go through.



This bridge swung up to let boats through.



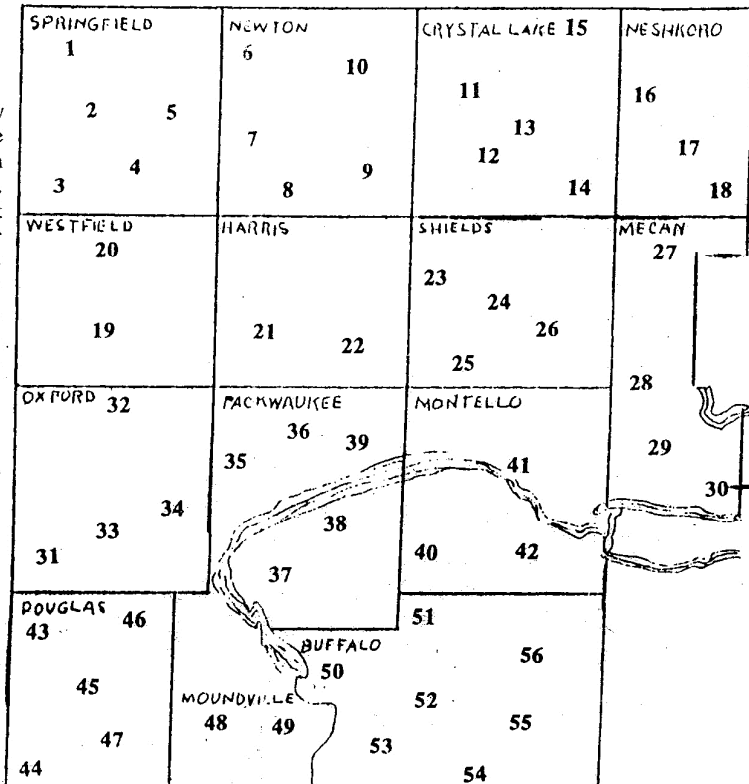
This part of the bridge rotated around to let ships through.

Marquette County Historical Society

Chicago & Northwestern Bridge & train spanning the Buffalo Lake near Packwaukee, WI

More road trip fun facts

There were at least 56 one room rural schools that once dotted the countryside of Marquette County. In addition, there were also graded schools at one time in Oxford, Westfield, Neshkoro, Germania, Harrisville, Montello, Endeavor and Packwaukee and high schools in Montello, Westfield, Oxford, Endeavor and Neshkoro. Here is a map that shows where all these schools were once located. Volunteers at the Marquette County Historical Society put this map together.



- MARQUETTE COUNTY RURAL SCHOOLS:**
- | | | |
|----------------------|--------------------|--------------------|
| SPRINGFIELD: | HARRIS: | MONTELLLO: |
| 1-Lime Bluff | 21-Sheldon | 40-Irish |
| 2-Pine Lake | 22-Hallman | 41-Vaughn |
| 3-Twin Lake | SHIELDS: | 42-Oak Valley |
| 4-Oakdale | 23-Haney | DOUGLAS: |
| 5-Oak Hill | 24-Shields | 43-Pine Bluff |
| NEWTON: | Corners | 44-Briggsville |
| 6-Banner | 25-Croaken | 45-Douglas |
| 7-Schrank | 26-Warmbier | Center |
| 8-Slader | MECAN: | 46-Emerson |
| 9-Summit | 27-Sunnyside | 47-Gay |
| 10-Semrow | 28-Big Mecan | MOUNDVILLE: |
| CRYSTAL LAKE: | 29-Little Mecan | 48-Elm Grove |
| 11-Lunch Creek | 30-Lakeside | 49-Pleasant |
| 12-Budsin | OXFORD: | View |
| 13-Turtle Lake | 31-Morgan | BUFFALO: |
| 14-Locust Lodge | 32-Foote | 50-Riverside |
| 15-Wegenke | 33-McNutt | 51-Hull |
| NESHKORO: | 34-Hodge | 52-Brick |
| 16-Powers | PACKWAUKEE: | 53-Graham |
| 17-Oak Grove | 35-Stalker | 54-Browning |
| 18-Hillside | 36-Sunny Flats | 55-Sump |
| WESTFIELD: | 37-Frink | 56-Russell |
| 19-Russell Flats | 38-Williams | |
| 20-Lawrence | 39-Kingsley | |
- STATE-GRADED:** Oxford, Westfield, Neshkoro, Germania, Harrisville, Montello, Endeavor, Packwaukee
HIGH SCHOOLS: Montello, Westfield, Oxford, Endeavor (for a while), Neshkoro

What communities in Marquette County have schools in them today? There are five of them in Marquette County and one Westfield School District school just north of the county line.

- 1.
- 2.
- 3.
- 4.
- 5.
- 6.

Answers	
6.	Coloma
5.	Briggsville
4.	Endeavor
3.	Oxford
2.	Westfield
1.	Montello

Did you know there is a labyrinth in Westfield? Write that word: _____ It's the Andy Polk Memorial Labyrinth. Andy Polk was beloved teacher who died and people honored him with this labyrinth. Labyrinths are curved paths kind of like a maze. People quietly walk along the path and concentrate on their walking to find peace. They are built all over the world and people have been walking them for hundreds and hundreds of years. This one is on the grounds of the Westfield High School and people are invited to come and walk its paths. Left is the Andy Polk Memorial Labyrinth and right is an example of a labyrinth pattern and the path you follow.

