



Iowa Weather Update & Outlook

Jeff Zogg, Senior Hydrologist

National Weather Service – Des Moines, IA

April 25, 2017

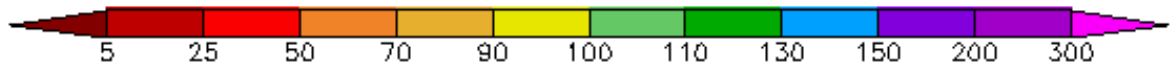
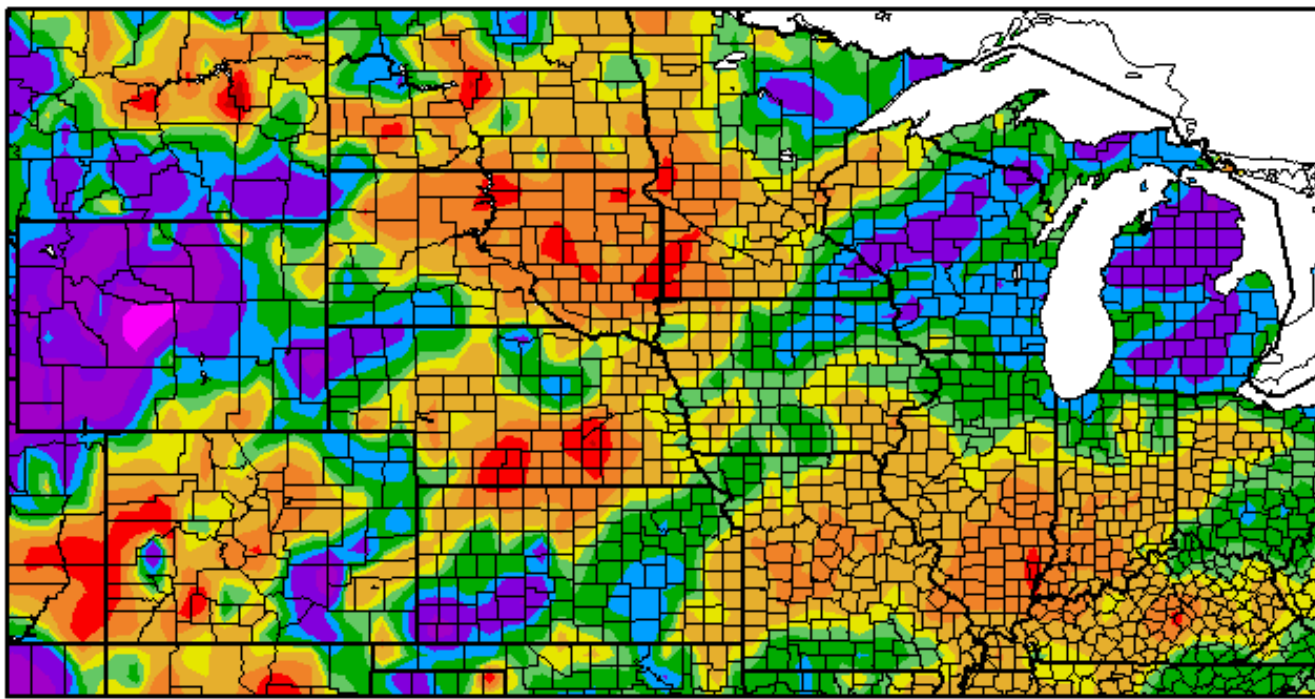


Precipitation % of Normal

Past 3 Months



Percent of Normal Precipitation (%)
1/26/2017 - 4/25/2017



Generated 4/26/2017 at HPRCC using provisional data.

Regional Climate Centers



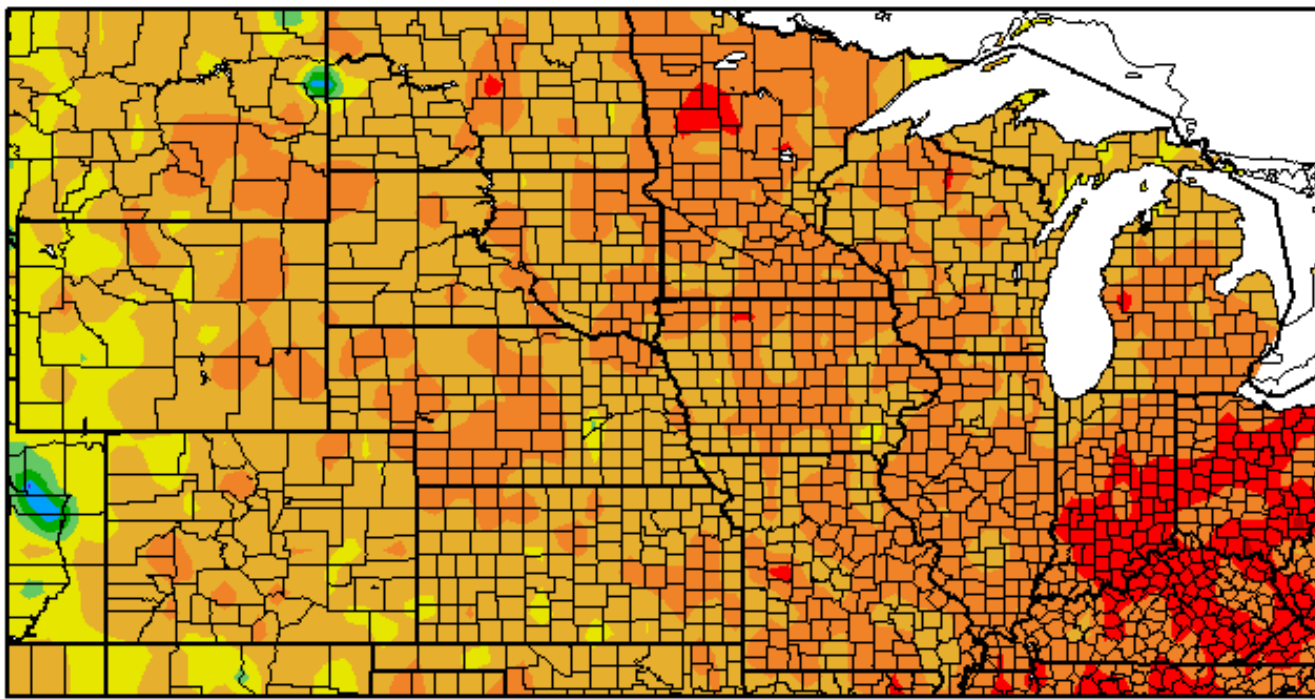


Temperature Dep from Normal

Past 3 Months



Departure from Normal Temperature (F)
3/27/2017 - 4/25/2017



Generated 4/26/2017 at HPRCC using provisional data.

Regional Climate Centers

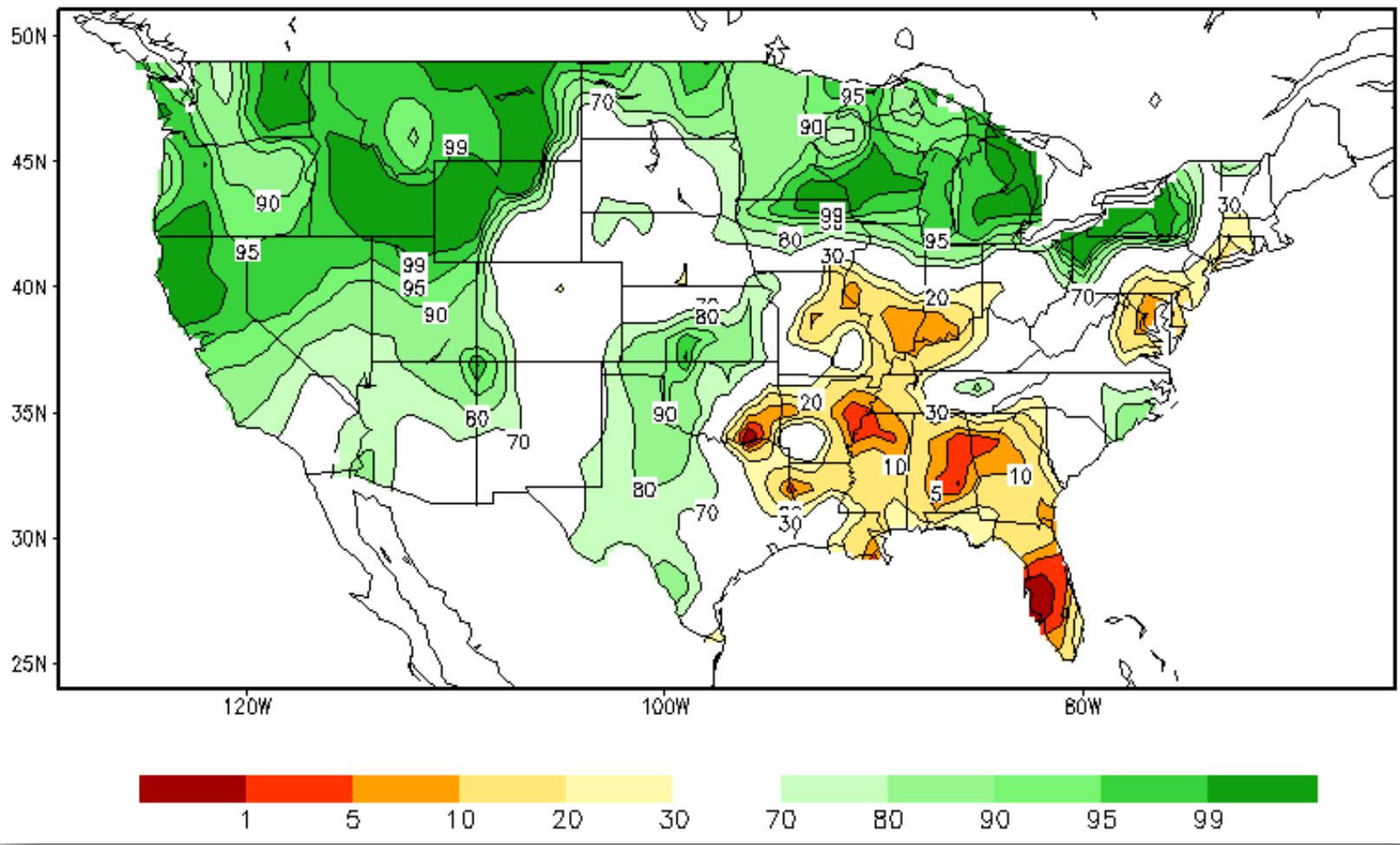




Soil Moisture Percentile



Calculated Soil Moisture Ranking Percentile APR 25, 2017



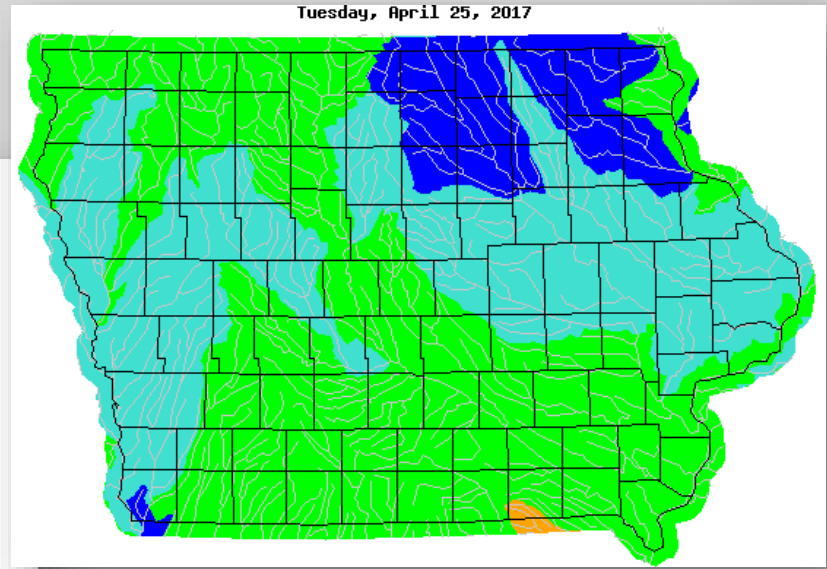


USGS Current Streamflow

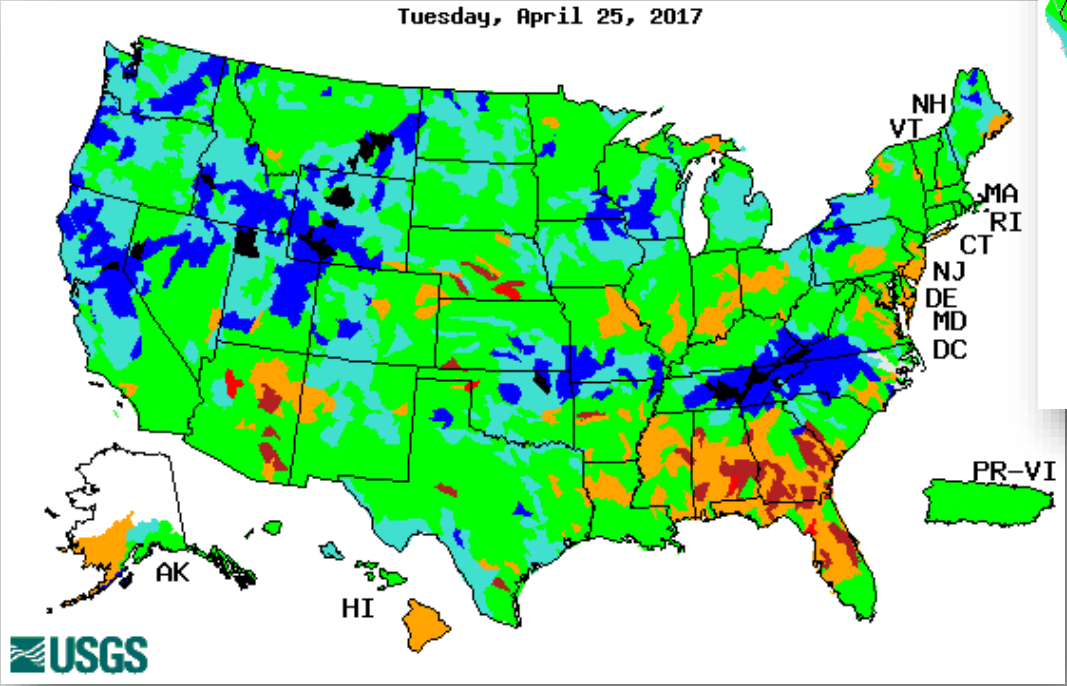
Values vs. Normal (Percentiles)



Tuesday, April 25, 2017



Tuesday, April 25, 2017



Explanation - Percentile classes

Low	<10	10-24	25-75	76-90	>90		High
	Much below normal	Below normal	Normal	Above normal	Much above normal		



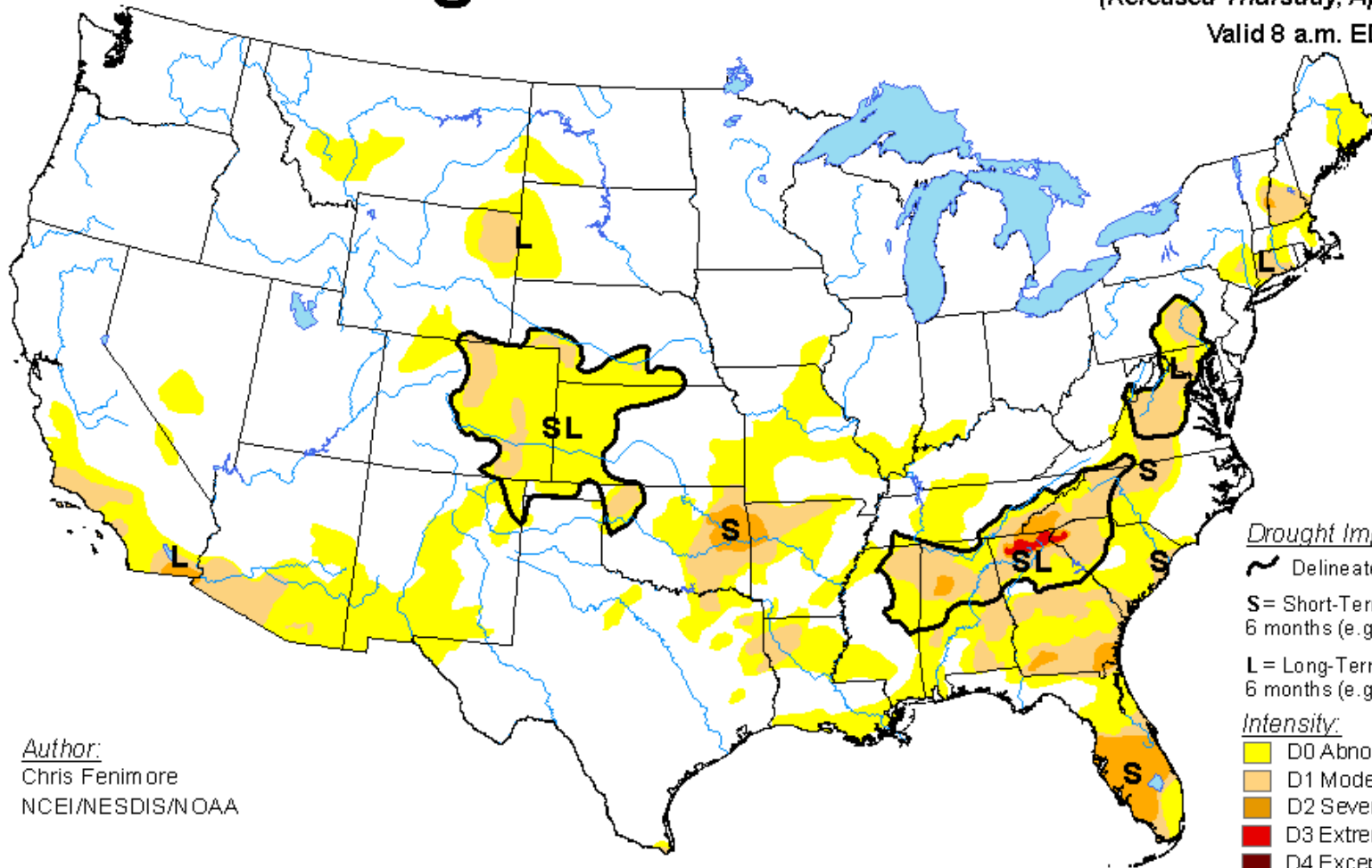
Building a Weather-Ready Nation

U.S. Drought Monitor

April 18, 2017

(Released Thursday, Apr. 20, 2017)

Valid 8 a.m. EDT



Author:
Chris Fenimore
NCEI/NESDIS/NOAA

Drought Impact Types:

Delineates dominant impacts

S = Short-Term, typically less than 6 months (e.g. agriculture, grasslands)

L = Long-Term, typically greater than 6 months (e.g. hydrology, ecology)

Intensity:

D0 Abnormally Dry

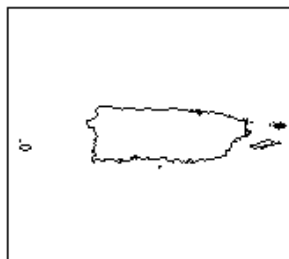
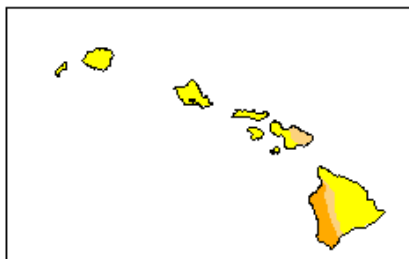
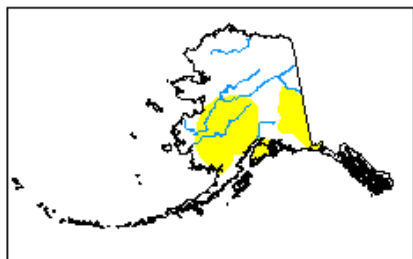
D1 Moderate Drought

D2 Severe Drought

D3 Extreme Drought

D4 Exceptional Drought

The Drought Monitor focuses on broad-scale conditions. Local conditions may vary. See accompanying text summary for forecast statements.



<http://droughtmonitor.unl.edu/>

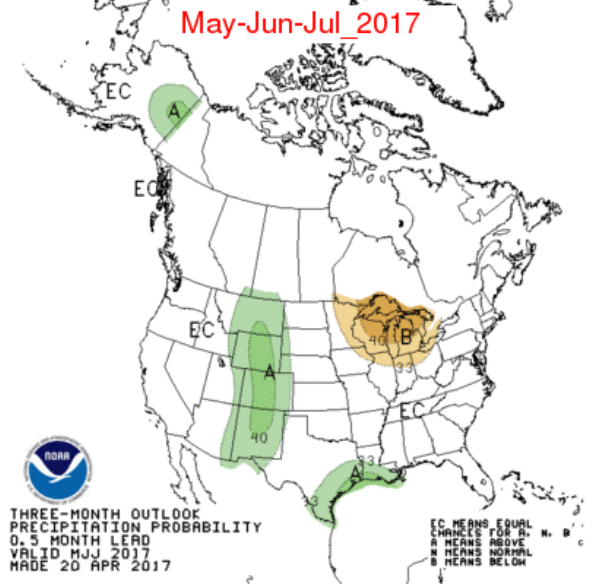
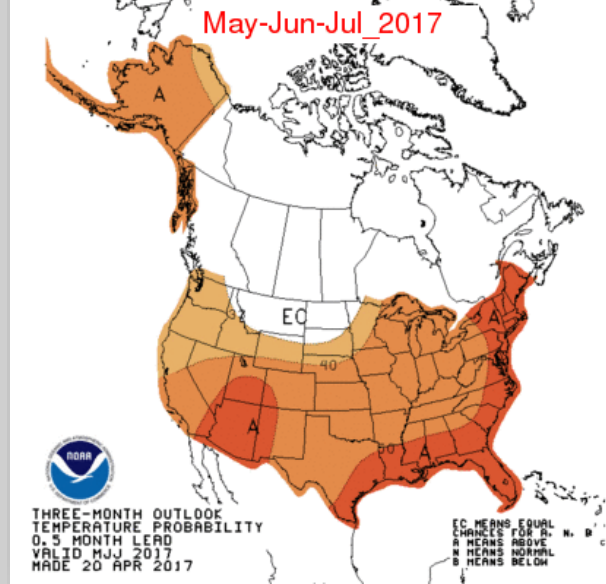
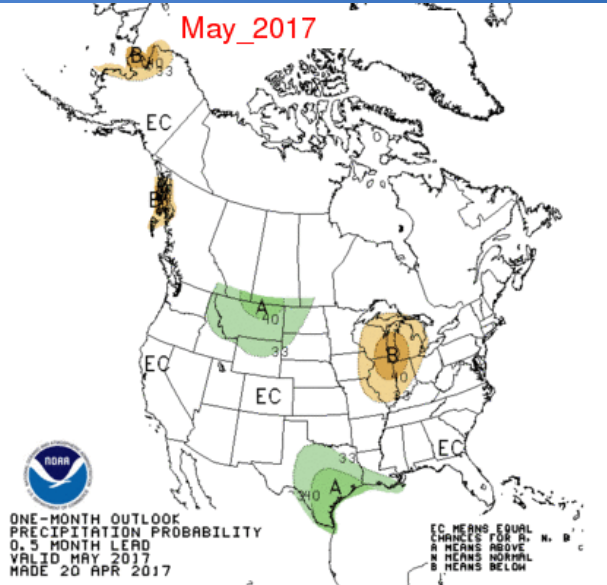
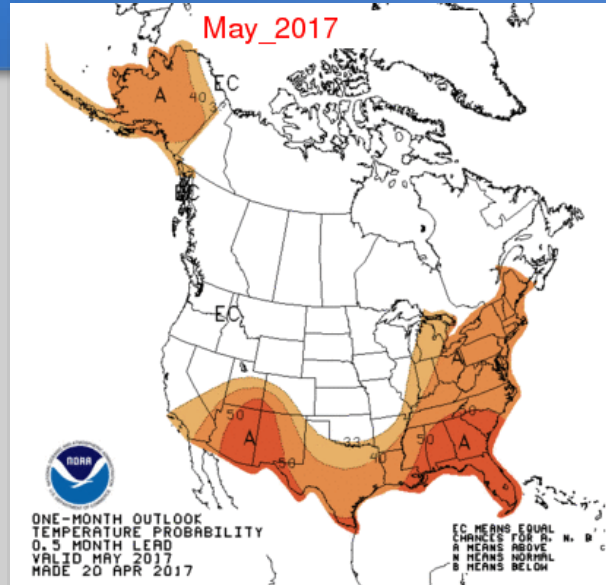


Temp/Precip Outlooks



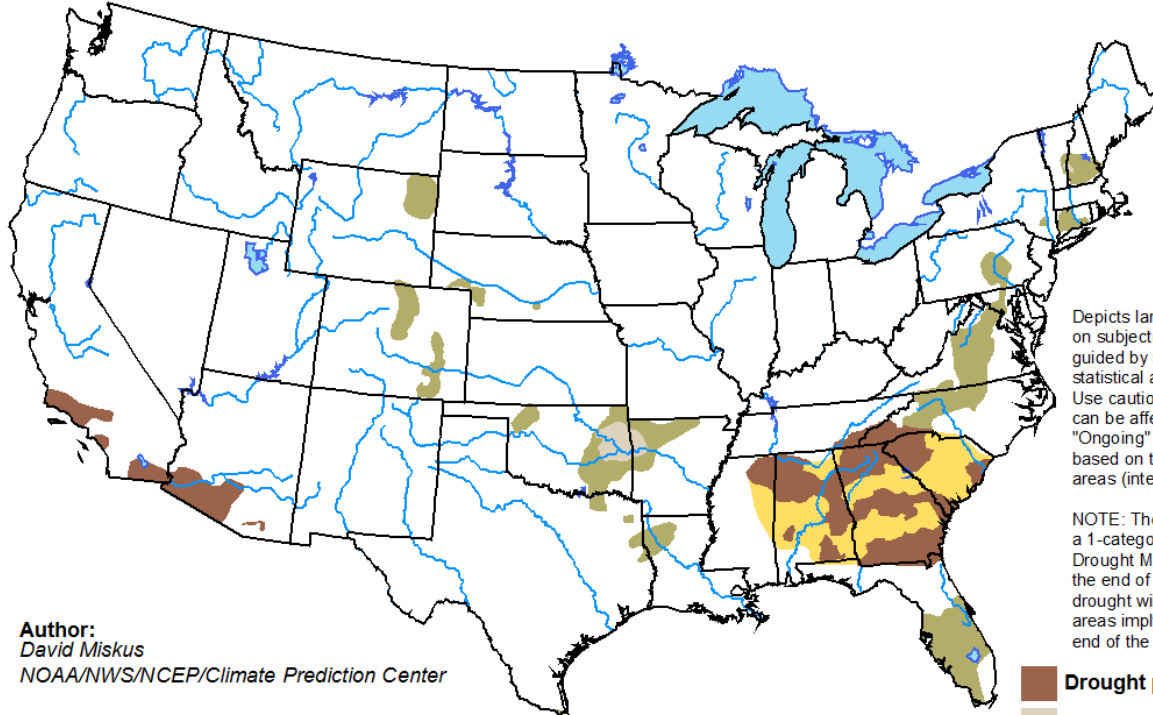
Temperature
on Left

Precipitation
on Right



U.S. Seasonal Drought Outlook Drought Tendency During the Valid Period





Valid for April 20 - July 31, 2017
Released April 20, 2017

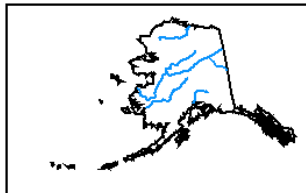


Author:
David Miskus
NOAA/NWS/NCEP/Climate Prediction Center

Depicts large-scale trends based on subjectively derived probabilities guided by short- and long-range statistical and dynamical forecasts. Use caution for applications that can be affected by short lived events. "Ongoing" drought areas are based on the U.S. Drought Monitor areas (intensities of D1 to D4).

NOTE: The tan areas imply at least a 1-category improvement in the Drought Monitor intensity levels by the end of the period, although drought will remain. The green areas imply drought removal by the end of the period (D0 or none).

-  Drought persists
-  Drought remains but improves
-  Drought removal likely
-  Drought development likely

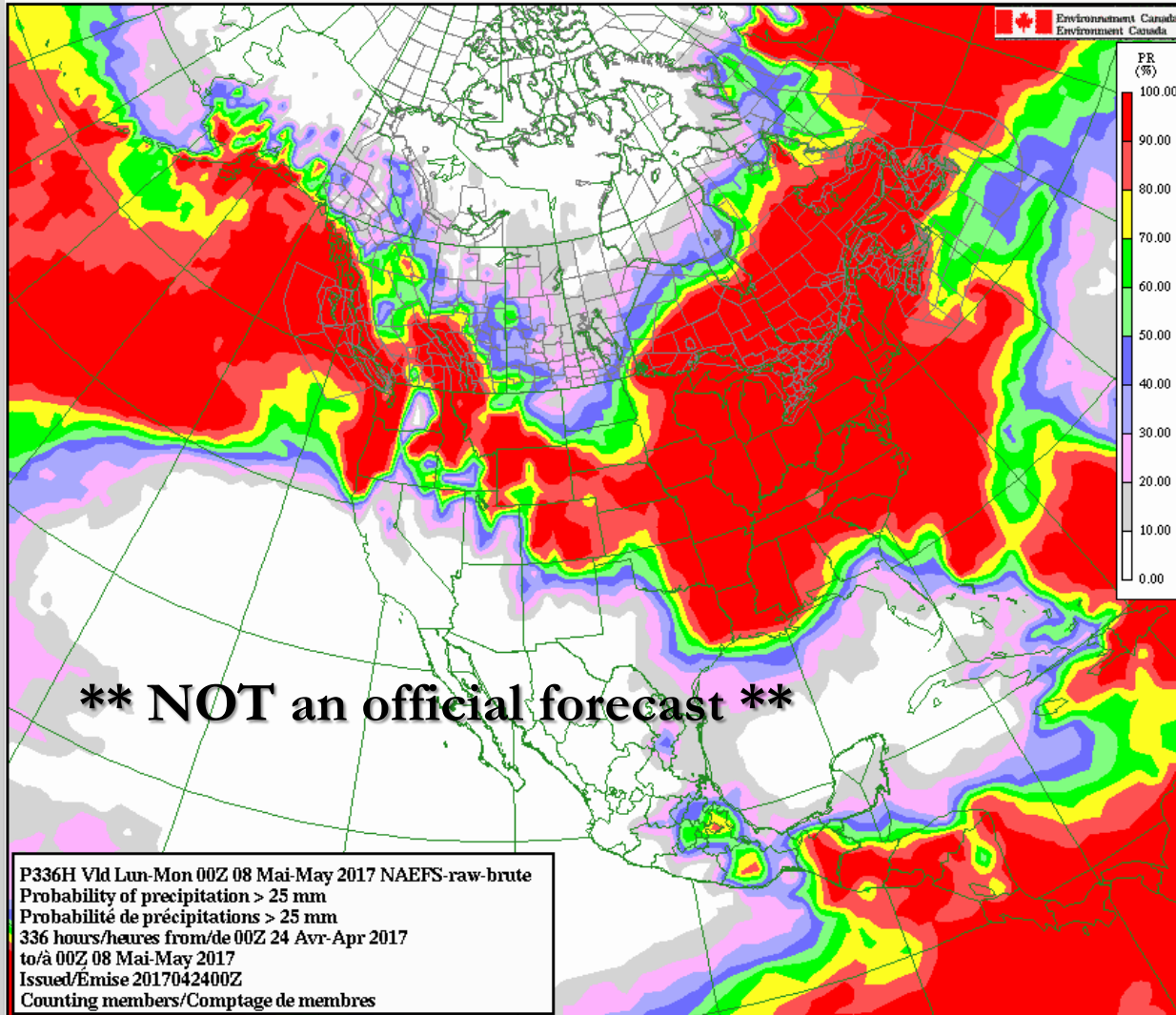


<http://go.usa.gov/3eZ73>



Wet Conditions through May?

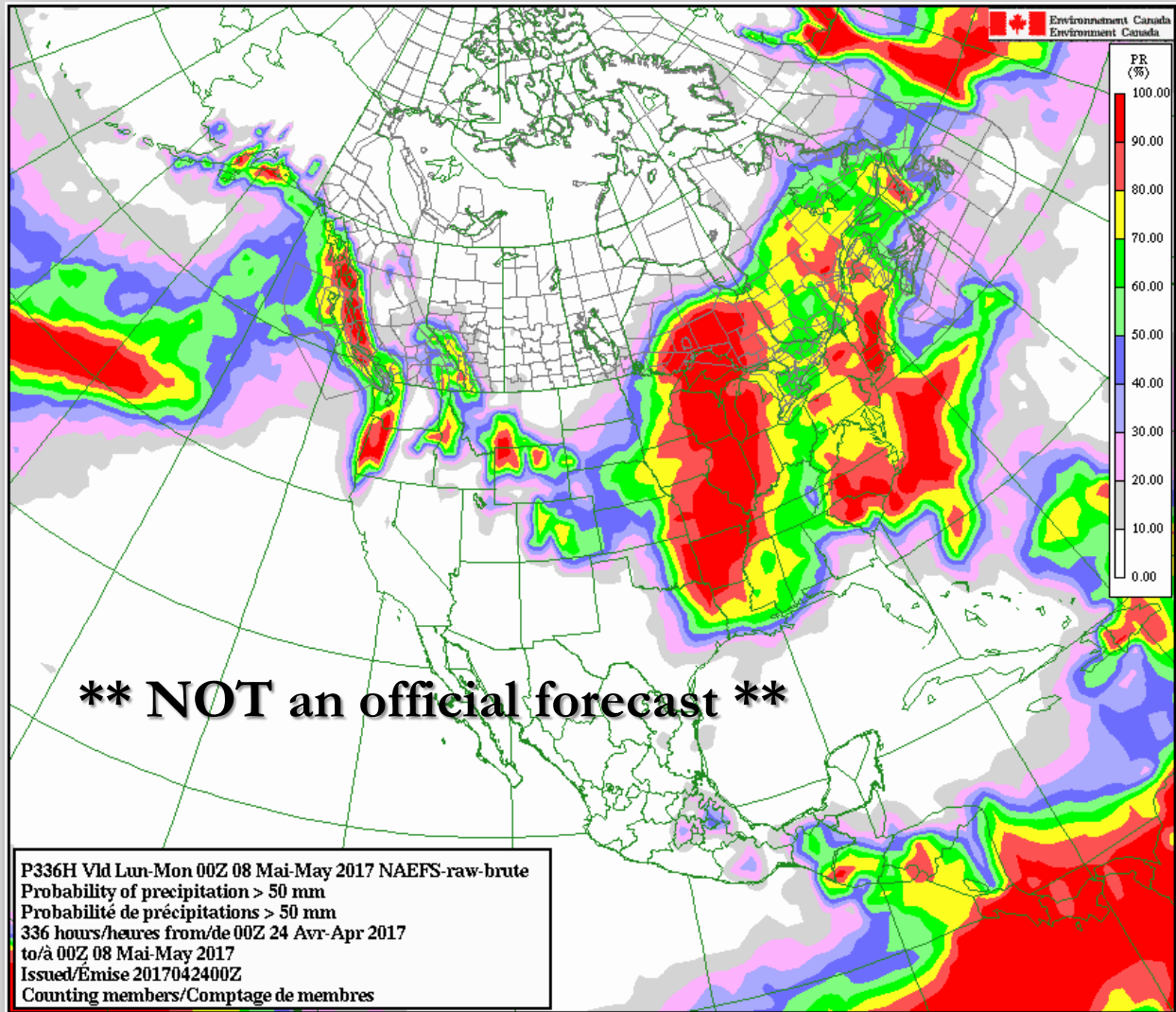
2-Week Rainfall, Probability of > 1 inch





Wet Conditions through May?

2-Week Rainfall, Probability of > 2 inches



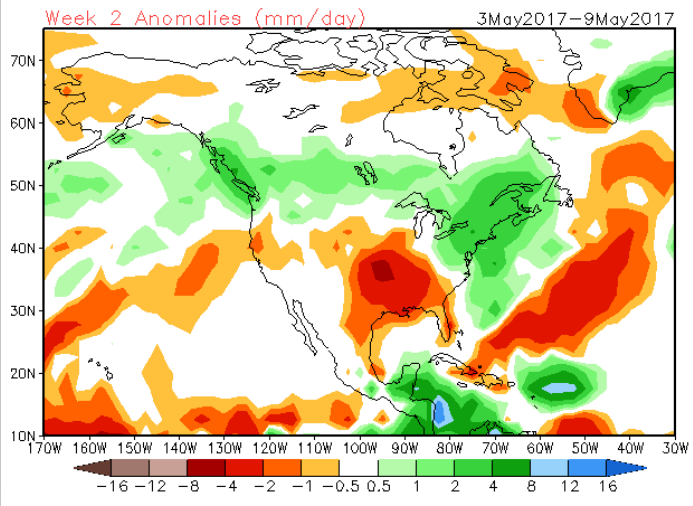
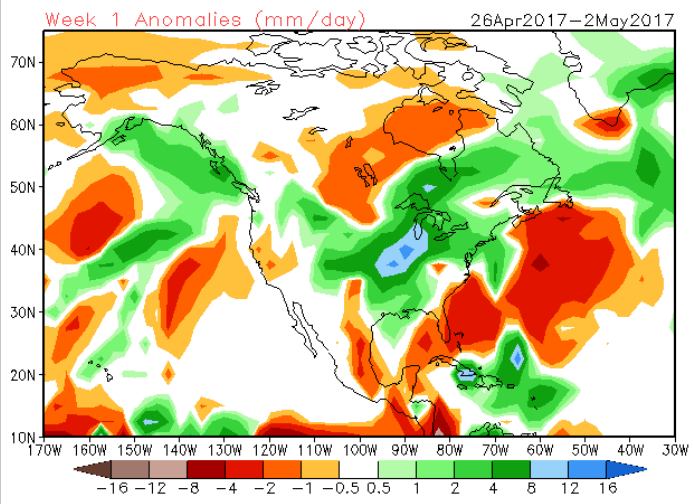


Wet Conditions through May?

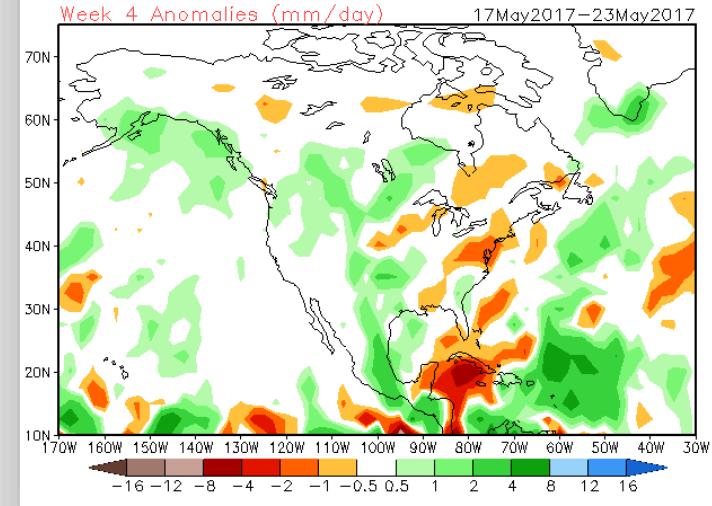
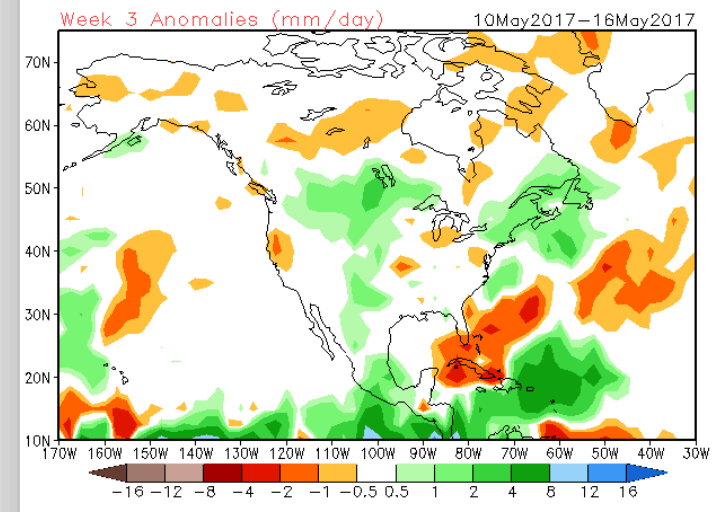
Weeks 1, 2, 3 & 4 Rainfall Anomalies



CFSv2 Weeks 1 & 2 Precipitation
16 Member Ensemble Mean Forecast from 25Apr2017



CFSv2 Weeks 3 & 4 Precipitation
16 Member Ensemble Mean Forecast from 25Apr2017





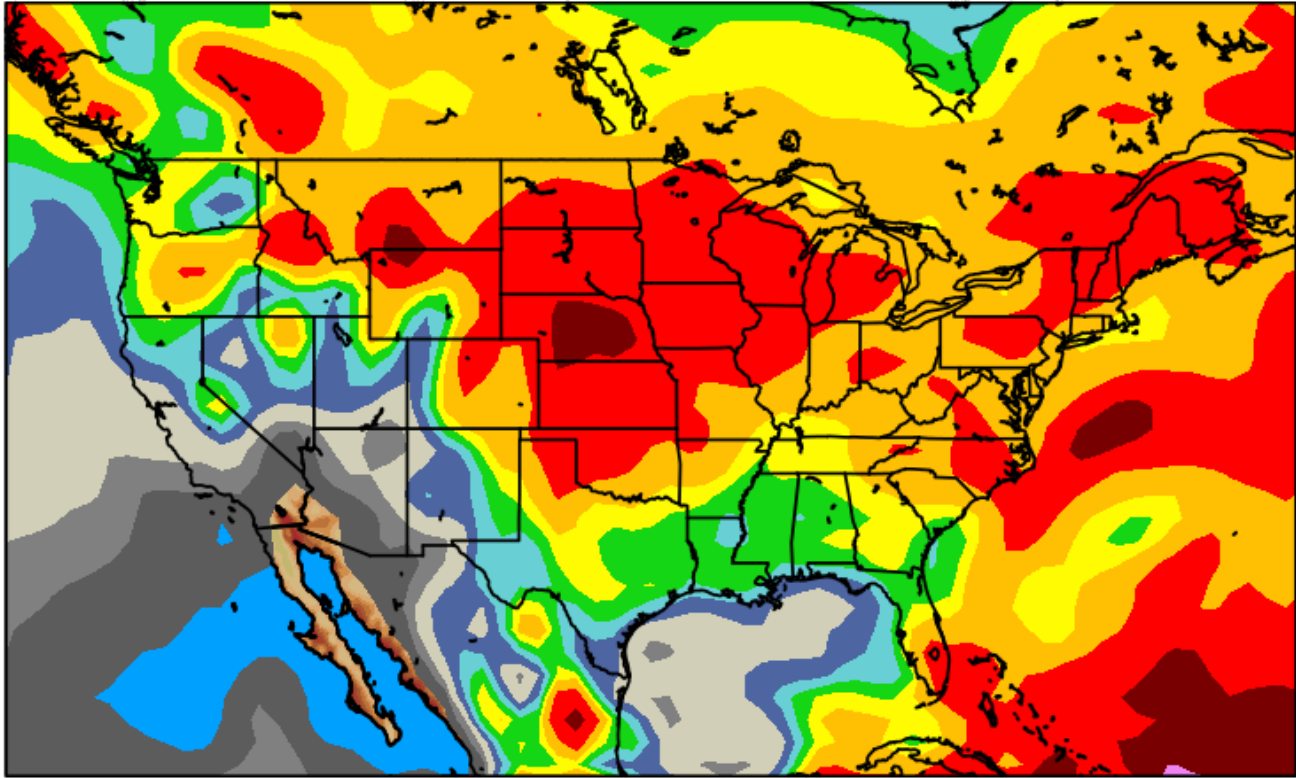
Wet Conditions through May?



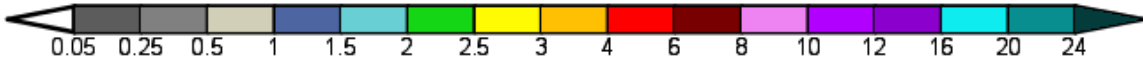
Total Rainfall for May

Latest Model Cycle Used: 00 UTC 26 Apr 2017

CFS 20-member Ensemble (00/06/12/18 UTC Control Runs - Last 5 Days)
Weeks 3-6 Mean Total Precipitation (in) - All Members
12 AM CST Wed, May 10, 2017 - 12 AM CST Wed, Jun 07, 2017



**** NOT an official forecast ****

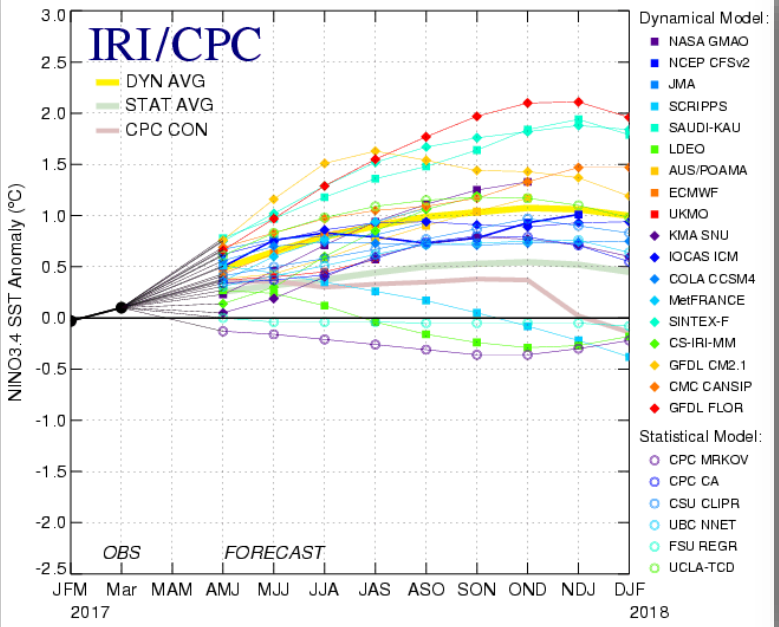




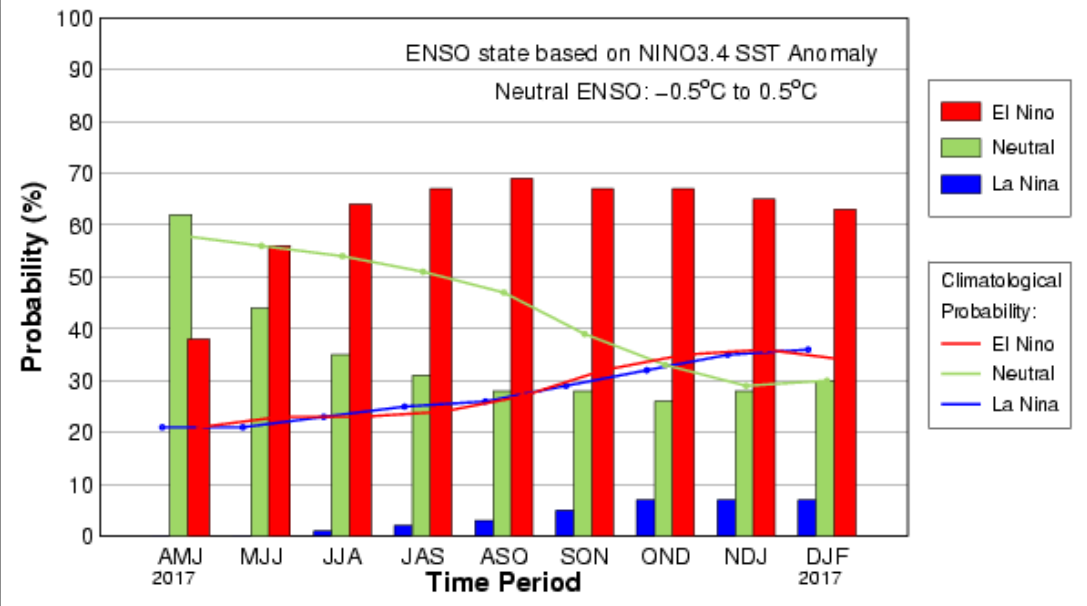
Beyond May El Nino Forecast



Mid-Apr 2017 Plume of Model ENSO Predictions



Mid-Apr IRI/CPC Model-Based Probabilistic ENSO Forecast



- No relationship with precipitation in Iowa.
- Probabilities lean strongly to cooler than normal temperatures for June – August.





Additional NWS Information

Social Media



www.weather.gov/desmoines



<https://www.facebook.com/NWSDesMoines>



[@NWSDesMoines](https://twitter.com/NWSDesMoines)



<http://www.youtube.com/user/NWSDesMoines>



[NWS Des Moines](#)



Thank You



For questions & additional information:



Find us on
Facebook



NWS Des Moines, IA

<http://www.weather.gov/desmoines>

Email: jeff.zogg@noaa.gov

Phone: 515-270-4501

