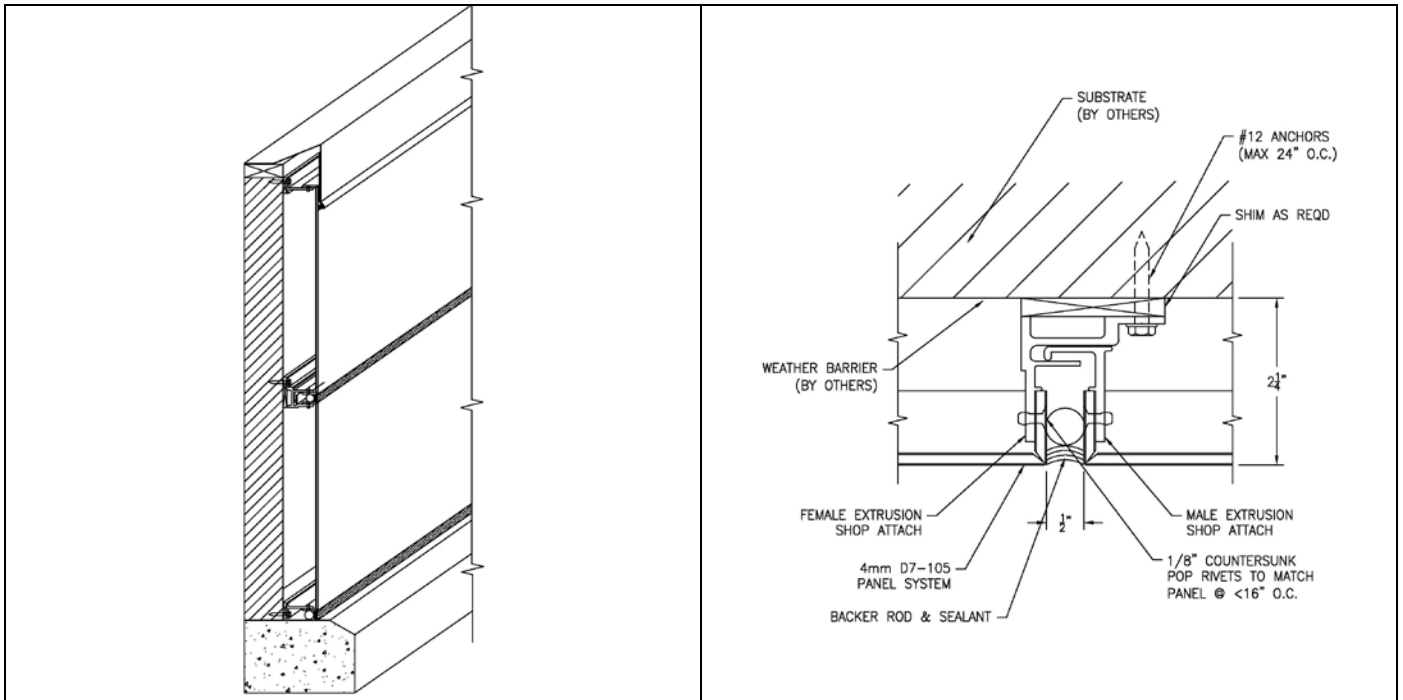


PRODUCT DATA SHEET

The D7-105 is a route and return aluminum composite panel system using integral locking extrusions with sealed joints between panels. The wet seal system keeps water out of the panel system and away from your building. Our system has been independently tested and meets the highest standards in the industry.

D7-105 Features and Information:

System:	Progressive Installation
Joint Type	Caulking standard 1/2" Joints
Underlayment	Waterproofing Weather Barrier Required prior to panel installation
Required Substrate	Minimum of 5/8" Plywood waterproofed prior to installation
Radius Surfaces	YES, using our Micro Seam fabrication method and kerf cutting extrusions
System Depth	2" Minimum – 2-1/4" Design
Tested Certifications	ASTM E283, E331, E330, E1233 and AAMA 501
Required Maintenance	Minimal : Clean with low pressure water and mild detergents
Thermal Expansion	YES
Price	Ranges with complexity of the project
Weather Sealed	YES
Installation Rating	Easy



<p>Material Manufacturers:</p> <p>Alpolic (Mitsubishi Plastics) Alucobond (3A Composites) Larson (Alucoil) Reynobond (Alcoa) See Manufacturer for product technical specifications, finish and color options available.</p>	<p>Base Material Sizing:</p> <p>50" x 196" 62" x 196" Standard Custom Sizes also available PE Core = Polyethylene FR Core = Fire Rated (Mineral)</p>
<p>Material Thickness:</p> <p>4mm (.157") Standard</p>	<p>Panel Extrusions:</p> <p>Aluminum Alloy: 6063-T6 Finish</p>
<p>System Depth:</p> <p>2" Minimum - Design 2-1/4" Custom Systems Available</p>	<p>Fabrication Tolerances:</p> <p>Width: 0.08" nominal Length: 0.08" nominal Panel Depth: 0.040" nominal Square: 0.08" nominal</p>
<p>Joint Width:</p> <p>½" Standard Customer Systems Available</p>	<p>Performance Testing:</p> <p>ASTM E 283 - Static Air Infiltration ASTM E331 - Static Water Infiltration ASTM E330 - Structural Design Loads (40psf) ASTM E 1233 - Cyclic Air Pressure Differential AAMA 501 - Dynamic Water Infiltration</p>