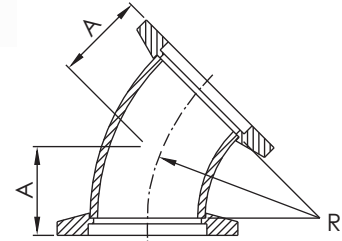


KF Fittings

KF 45° ELBOWS

*Material: SS 304L

*Tube Finish: Bead Blast



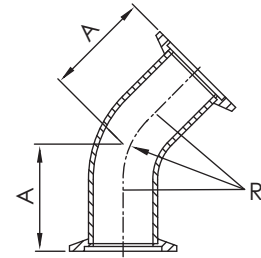
Part Number	Flange Size	A	R
KF-45EL-16	KF16	15.65	28.60
KF-45EL-25	KF25	19.58	38.10
KF-45EL-40	KF40	27.47	57.20
KF-45EL-50	KF50	35.36	76.20

**KF
DN**

KF 45° ELBOWS with TANGENTS

*Material: SS 304L

*Tube Finish: Bead Blast

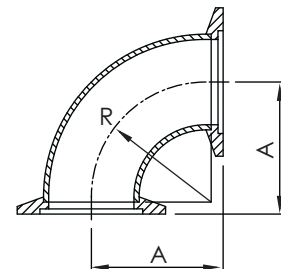


Part Number	Flange Size	A	R
KF-45ELT-16	KF16	23.10	28.60
KF-45ELT-25	KF25	28.45	38.10
KF-45ELT-25-1	KF25	33.88	38.10
KF-45ELT-40	KF40	42.67	57.20
KF-45ELT-40-1	KF40	45.10	57.20
KF-45ELT-50	KF50	50.55	76.20
KF-45ELT-50-1	KF50	62.50	76.20

KF 90° ELBOWS

*Material: SS 304L

*Tube Finish: Bead Blast



Part Number	Flange Size	A	R
KF-90EL-10	KF10	31.80	19.10
KF-90EL-16	KF16	29.20	28.60
KF-90EL-25	KF25	41.90	38.10
KF-90EL-40	KF40	61.00	57.15
KF-90EL-50	KF50	80.00	76.20

*Note: SS 316L Material Available on Request.

*Note: Polished and Electro- Polished Tube Finishes Available on Request.

KF Fittings

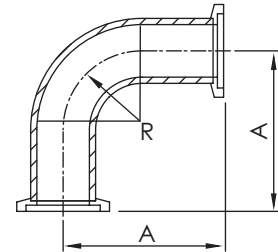


KF 90° ELBOWS with TANGENTS

*Material: SS 304L

*Tube Finish: Bead Blast

Part Number	Flange Size	A	R
KF-90ELT-16	KF16	68.58	28.60
KF-90ELT-16-1	KF16	40.00	28.60
KF-90ELT-25	KF25	92.46	38.10
KF-90ELT-25-1	KF25	50.00	38.10
KF-90ELT-40	KF40	130.05	57.15
KF-90ELT-40-1	KF40	65.00	57.15
KF-90ELT-50	KF50	139.95	76.20

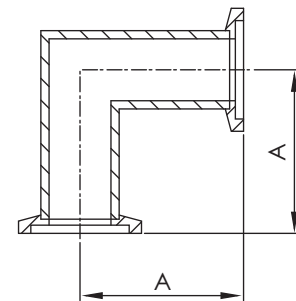


KF 90° MITERED ELBOWS

*Material: SS 304L

*Tube Finish: Bead Blast

Part Number	Flange Size	A
KF-MEL-16	KF16	29.21
KF-MEL-16-1	KF16	40.00
KF-MEL-25	KF25	50.00
KF-MEL-25-1	KF25	51.56
KF-MEL-40	KF40	60.96
KF-MEL-40-1	KF40	65.00
KF-MEL-50	KF50	69.84
KF-MEL-50-1	Kf50	80.01



**K F
DN**

*Note: SS 316L Material Available on Request.

*Note: Polished and Electro- Polished Tube Finishes Available on Request.