

## IN THIS EDITION

### \*NOTICE\* Board Meetings

Glen Laurel's monthly Board Meetings will now generally be held on the 1st Wednesday of the month at 7:00pm at the Woodbridge Club House.

Message From The Board  
Pages 1 & 2

Community Power Up Program  
Page 2

2014 Swim Season Information  
Page 4

Safety Tips  
Page 5

Save Our Lakes  
Page 6

Summer Lawn Tips  
Page 8

## MESSAGE FROM THE BOARD

SUMMER 2014

During the June 2014 Burney Road MUD Board meeting, the engineering firm of Lockwood, Andrews and Newnam, Inc. (LAN), presented five proposals to repair the erosion damage on Glen Laurel's lakes. The proposals were as follows:

- 1) Remove a two foot thick layer of soil around the perimeter of each lake and replace it with more stable soil.
- 2) Install a concrete shelf around the perimeter of each lake.
- 3) Flatten out the side slopes below the static water level.
- 4) Convert the lakes to dry detention ponds. The lakes are fully drained, and the area is suitably landscaped for a wet-dry cycle environment. It will only temporarily hold surface water from rainfall, and return to dry conditions.
- 5) Rehabilitate the lakes using existing soil.

Of those presented, proposal #4 garnered the most discussion. This proposal involves draining the lakes entirely, and converting to dry detention ponds. ***The majority of MUD Board members seemed to favor this proposal, as the best option for Glen Laurel.***

This list of proposals is conspicuously incomplete. More solutions exist and should be considered, such as construction of concrete bulkheads or sheet piles to stop the erosion. Such methods have been used successfully in the majority of our neighboring communities, yet have been withheld without explanation.

The chart below shows that Glen Laurel accounts for 61% of the total households in the Burney Road MUD, pays the majority of tax revenues each year and has done so for the last 14 years. The Burney Road MUD currently holds a bank account of \$1,410,751 dollars. That's nearly one and a half million dollars, comprising debt service, general funds and capital project funds. The Burney Road MUD owns, and is responsible for, maintaining the lakes which are the heart of Glen Laurel. **The majority of MUD Board members seem to favor the dry detention pond proposal, as the best option for Glen Laurel. THIS IS NOT ACCEPTABLE!!!**

Subdivision	Number of homes	Percent of total homes	avg appraised value	taxable base B*C	Percent of total appraised value
Ashford Lakes*	124	0.11	247,000	\$ 30,628,000.00	0.11
Eldridge Lake	145	0.12	247,000	\$ 35,815,000.00	0.13
Gannoway Lakes	182	0.16	260,000	\$ 47,320,000.00	0.17
<b>Glen Laurel</b>	<b>717</b>	<b>0.61</b>	<b>224,000</b>	<b>\$ 160,608,000.00</b>	<b>0.59</b>
<b>TOTAL</b>	<b>1168</b>		<b>TOTAL</b>	<b>\$ 274,371,000.00</b>	

\* Ashford Lakes is divided between two Municipal Utility Districts (MUD)  
\*\* All data collected from HAR.com

(continued on page 2...)

## COMMUNITY NEWS

### National Night Out

The Summer is in full swing and families, while trying to stay cool, are determined to make it the best one yet. For many, this means days at the pool, backyard BBQs and neighborhood block parties to celebrate the season. It also means the annual National Night Out, a national tradition of bringing the community together in an effort to raise awareness and create safer neighborhoods, is just around the corner.

The Annual National Night Out will be held on October 7th. Across the state, homeowners associations will join together with their local police and fire departments, businesses, neighborhood organizations and civic groups to heighten crime prevention awareness and to send a message to criminals that neighborhoods are organized and fighting back.

The first NNO event took place in 1984 with only 400 communities participating across the nation. Today's NNO activities have expanded to include more than 37 million people and 15,000 communities. Neighbors celebrate with block parties, cookouts and visits from local police and fire departments. Having An NNO event shows that the neighborhood is active, involved and working together to create a safe and engaging community experience, not for just one night, but year round.

It's a wonderful opportunity for communities nationwide to promote police and community partnerships, crime prevention, and  
*(continued on page 4)*

## MESSAGE FROM THE BOARD (CONTINUED)

The loss of the lakes would severely impact the value of every single home in Glen Laurel, by turning an amenity into a liability. Two of the lakes happen to be visible by all traffic through the community via West Airport and Burney Road. Dry detention ponds along these main entryways would tarnish the whole appearance of Glen Laurel.

Please go to [Glenlaurel.net](http://Glenlaurel.net), and participate in an online petition. Once completed, an email will be sent to the Burney Road MUD Board, Sugar Land City Council, Manager, and Mayor explaining that you, a resident of Glen Laurel and The City of Sugar Land, want EVERY option to repair the lakes to be explored. Furthermore, you DO NOT want the lakes turned into dry detention ponds, and request that Sugar Land city officials block any attempt by the MUD Board to proceed with that option.

Thanks,  
Glen Laurel  
Board of Directors

## COMMUNITY POWER UP PROGRAM



Summer is here and with summer comes high energy usage. You are already buying energy so why not save some money and help Glen Laurel while doing it? It's easy to switch, just go to [www.glenlaurelhoa.streampowerup.biz](http://www.glenlaurelhoa.streampowerup.biz) and join the other Glen Laurel residents that are benefiting from the Power Up Program and helping our neighborhood at the same time.

Would you like to see a completed walking trail around the lake, additional landscaping beautification projects, a nicer clubhouse where we can actually have inside neighborhood events or eventually our very own tennis courts right here in Glen Laurel??

Sounds like an impossible wish list, right? Well, this can all be possible with the help of every one of you. The great thing is it doesn't require writing a check, fundraising, or going door to door....it just requires one thing - going to the following website: [www.glenlaurelhoa.streampowerup.biz](http://www.glenlaurelhoa.streampowerup.biz) and switching your electric provider to Stream Energy.

Each resident that enrolls under Glen Laurel's Power Up program will be helping to contribute thousands of \$'s to our Reserves every single month. We have over 700 homes in our neighborhood and every last resident pays a light bill to some company right now. Why not switch to Stream Energy and take advantage of their incredibly low rates and help make those items on Glen Laurel's wish list a reality at the same time!

It is important to know that anyone can participate in this program, you do not have to be a Glen Laurel resident. For more information call Jennifer at 281-732-9375 and let me help you get signed up today.

Thanks,  
Jennifer Fuchs

## SIGN-UP FOR EMAIL NOTIFICATIONS

Please check the Glen Laurel website to get important information and sign up to provide your email address if you would like to have alerts emailed to you.



Visit [www.glenlaurel.net](http://www.glenlaurel.net) and click on the tab labeled "Email Sign-Up" to receive the notifications.

Signing up for email notifications will also allow you to access the Resident Only section of the website.



SUGAR LAND  
H O M E S  
WWW.SUGARLANDHOMES.ORG

**Matt Dietz**  
Texas Licensed Broker

**The Sweetest Real Estate Experience You'll Ever Have!**



### CURRENT LISTINGS

- 6134 Fawnlake 3,013 SF 4/3.5/2 two story  
MLS 83289689 Katy Tx \$323,000
- 6138 Fawnlake 2,600 SF 4/2.5/2 single story  
MLS 61930004 Katy Tx \$279,000
- 1203 Foster Creek 4,420 SF 4/5-3.5-2 on 1.57 acres  
MLS 93001199 Richmond Tx \$549,000
- 13906 Emerald Forest 4,280 SF 5-3/2-2  
MLS 66204048 Sugar Land, Tx \$495,000
- 1107 Morning Mist Waterfront 4,325 SF 5/6-3/2-2  
MLS 69467044 Sugar Land, Tx \$495,000

**281-635-6081**

## HOUSTON METHODIST DEPARTMENT OF SURGERY WELCOMES DR. MICHAEL YAAKOVIAN



Michael Yaakovian, MD

Ashish Saharia, MD Timothy Oppermann, MD

Dr. Timothy Oppermann and Dr. Ashish Saharia are pleased to welcome Dr. Michael Yaakovian to Houston Methodist Department of Surgery at Houston Methodist Sugar Land Hospital. Dr. Yaakovian is board certified in surgery with a focus on offering the latest and most advanced surgical procedures to minimize patient discomfort and enhance healing.

Together, the physicians of Houston Methodist Department of Surgery provide patients in Fort Bend and surrounding areas with personalized, compassionate care for a broad range of general surgery needs, including digestive surgery and surgical oncology — all supported by the technology, resources and staff of Houston Methodist Sugar Land Hospital.

TO SCHEDULE AN APPOINTMENT, CALL 281.275.0860.

Houston Methodist Sugar Land Hospital Campus  
Medical Office Building Three  
16605 Southwest Freeway, Suite 450  
Sugar Land, TX 77479 • 281.275.0860

HOUSTON  
**Methodist**  
SUGAR LAND HOSPITAL

[methodistsugarlanddocs.com](http://methodistsugarlanddocs.com)



## COMMUNITY NEWS (CONTINUED)

neighborhood camaraderie. While the one night is certainly not an answer to crime, drugs and violence, National Night Out represents the kind of spirit, energy and determination to help make neighborhoods a safer place year round. The night celebrates safety and crime prevention successes and works to expand and strengthen programs for the next 364 days.

Communities that have participated in NNO in the past, or those who may be interested in participating, can register online at [www.nno.org](http://www.nno.org). Once registered, the community will receive a free NNO organizational kit with everything they need to know to plan for NNO. Registration also helps the National Association of Town Watch (NATW) organize and communicate with participating communities and their NNO coordinators.

NATW is a nonprofit membership organization. They are dedicated to the development/promotion of organized crime prevention activities and to the groups and the individuals participating in local crime watch. For more details, visit [www.natw.org](http://www.natw.org).

National Night Out will be Tuesday, October 7, 2014. We would encourage residents to have a block party - get out, meet your neighbors and get to know one another.

Glen Laurel  
Board of Directors

## 2104 SWIM SEASON

1. The pool will be closed most Mondays for cleaning unless after a holiday weekend.
2. Private pool parties may be scheduled but only outside of the swim hours listed below.
3. The pool will be open only when there are lifeguards on duty. Final swim day will be Sunday, September 1.
4. Hours of operation will be as follows:

Fulltime thru August 24, 2014

- Monday: Closed
- Tuesday: 4PM – 9PM
- Wednesday: 4PM – 9PM
- Thursday: 4PM – 9PM
- Friday: 1PM – 9PM
- Saturday: 1PM – 9PM
- Sunday: 1PM – 8PM

Labor Day Weekend: August 30, 31 & September 1

- Saturday: 1PM – 9PM
- Sunday: 1PM – 8PM
- Monday: 1PM – 8PM

The following requirements must be met in order to receive Pool Tags and use the pool facilities:

1. Must be property owner and resident member of Glen Laurel HOA.
2. **Must have paid current annual maintenance fees in order to receive pool tags.** If renting, you will not receive Pool Tags if the property owner is not up-to-date with maintenance fees. Maintenance fees WILL NOT be accepted at the pool site. Please contact Sterling Association Services to pay.
3. **Must show swim tag and sign in with lifeguard each time you arrive at pool.**
4. May bring up to two guests per family.
5. Children 12 years of age and under must be accompanied by an adult 18 years of age or older.
6. Anyone not following lifeguards' instructions or acting in a disruptive manner may be asked to leave the pool facility.
7. Pool tags are for residents use only and may not be given to or shared with non-residents. Doing so may result in loss of pool privileges.

### POOL TAG PICKUP INFORMATION:

If you did not obtain your pool tags on one of the earlier distribution dates, you can get them from Sterling by mailing: GLEN LAUREL HOMEOWNERS ASSOCIATION, INC. 11201 Lake Woodbridge Sugar Land, TX 77498. Please include a check payable to Sterling for \$9.00 per pool tag. Please specify how many pool tags will be needed. Should you have any questions regarding the operation or maintenance of the facility, please contact Sterling at (832) 678-4500.

## FREE IRRIGATION SYSTEM AUDIT

The City of Sugar Land has contracted with Water Irrigation System Evaluations (W.I.S.E. Guys) to provide Sugar Land residents with a comprehensive evaluation of your irrigation system, at no cost to you. The W.I.S.E. Guys utilize licensed irrigators to evaluate existing residential irrigation systems and make recommendations for improvement to the performance of your system. More details at [www.sugarlandtx.gov](http://www.sugarlandtx.gov).

# NEWS TO USE: SAFETY TIPS:

Did you remember to lock the doors?

A home or car burglary can happen in a second. Many times it's a result of the owner leaving their home or car unlocked, making it easy prey for would-be thieves. Here are some tips to make sure you aren't a victim of crime this summer:



## Home/Burglary Safety Tips:

- Always keep your garage doors, windows, doors, etc. locked and closed even if you are at home. Many home burglaries are crimes of opportunity. Don't make it easier for burglars
- Get a monitored alarm system
- Install a deadbolt lock
- Install solid doors
- Mark your valuables with an engraver and make a property identification list
- Leave lights on timers when you are out of town
- Use proper exterior lighting
- Have a trusted neighbor collect your mail and newspapers while you are out of town to make it less obvious that you are out of town

## Auto Theft/Burglary of Vehicle Safety Tips:

- Lock Your Car and Take Your Keys – don't make it easier for a thief to enter your vehicle. Half of all vehicles stolen in Texas are the result of drivers leaving their keys behind (in what they believe are hidden locations).
- Park in well-lit areas or attended lots. Over half of all vehicle thefts occur at night. Auto thieves do not like witnesses and prefer unattended parking lots.
- Don't leave valuables in plain view – don't make your car a more desirable target and attract thieves by leaving valuables in plain sight. Secure your valuables in the trunk prior to arrival at your designation.
- Install protection devices – Visible steering wheel locks, ignition kill switches, fuel kill switches, alarms and vehicle tracking devices.
- Never leave your vehicle running to keep it cool while you are away from it or even to run back into your house for just a second

## General Safety Tips:

- Make sure you stay aware of your surroundings
- Do not walk around with headphones on so that you cannot hear what is going on around you
- When on a hike and bike trail or in greenbelt areas, stay alert to those around you and if possible be with at least one other person
- If you are in the entertainment district, please make sure you have one reliable person responsible for you getting home safely and to ensure you have someone looking out for you
- When walking alone, have your phone ready in case you need to call for assistance
- If walking at night, have a light or wear light/reflective clothing
- Trust your instincts if you feel something is wrong, don't hesitate to call for help

Always lock your home and car doors. Be safe.

## IMPORTANT NUMBERS

Emergencies	911
City Hall	281-275-2700
Councilman/Mayor	281-275-2710
Fire Department	281-275-2851
Fire Dept. Non-emergency	281-275-2500
Police Department	281-275-2525
Public Works/Street Lights	281-275-2450
Ordinance/City Code	281-275-2370
Sugar Land Animal Control	281-275-2750
Animal Control Alternate	281-275-2364
Auto Registration	281-341-3710
Crime Stoppers	281-342-8477
Driver's License	281-232-4334
Health Department	281-342-6414
Fort Bend ISD	281-634-1000
Sheriff's Department	281-341-4700
Social Services	281-342-7300
Voter Registration	281-341-8670

### Hospitals:

24HR Emergency Center	281-277-0911
Memorial Herman S.L.	281-725-5000
Methodist Health Center	281-274-7000
Oak Bend Medical Center	281-342-2811
S.L. Medical Center	281-274-6600

### Misc:

Poison Control	800-764-7661
Sugar Land Library	281-277-8934
Sugar Land Post Office	800-275-8777
Recycling Center	281-342-5226

Sterling ASI  
Ry Reid, Community Manager  
11201 Lake Woodbridge Dr.  
Sugar Land, TX 77498  
832-678-4500 x253

GL Homeowners Association  
Board of Directors

President  
John Clarke  
john@glenlaurel.net

Vice President  
Lydia Rosenthal  
lydia@glenlaurel.net

Secretary/Treasurer  
Pat Tyree  
pat@glenlaurel.net

Community Manger  
Ry Reid  
ry@sterlingasi.com

# The Future of Glen Laurel?



The fate of our lakes is being decided right now.

Send a message to save our lakes

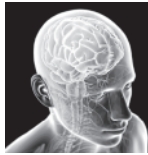
**ACT NOW!**

Visit [GlenLaurel.net](http://GlenLaurel.net)



## AN EXPEDITED TEAM APPROACH. THAT'S THE DIFFERENCE BETWEEN PRACTICING MEDICINE AND LEADING IT.

Does persistent or frequent pain impact your quality of life — day by day, minute by minute — until you just can't cope? Houston Methodist Sugar Land Hospital's experienced Neuroscience team is ready to lead your recovery.



### Headache Center

We are committed to providing advanced, personalized care to help chronic headache patients get back to a life without pain. Receive expedited access to our world-class team of headache specialists. They will provide coordinated and comprehensive care starting with an accurate diagnosis and a unique treatment plan to help alleviate and prevent chronic headaches.



### Spine Center

We are dedicated to providing a comprehensive range of treatments and expedited services so you can stop enduring pain. Our world-class team of spine specialists and physical therapists will guide you through a customized treatment plan tailored to your specific needs. Our goal is to diagnose and treat the source of your neck and back pain once and for all.

HOUSTON  
**Methodist**<sup>SM</sup>  
SUGAR LAND HOSPITAL


[houstonmethodist.org/sugarland](http://houstonmethodist.org/sugarland)

Expedited appointments available:  
Headache Center  
**281.276.8999**  
[headachecenter@houstonmethodist.org](mailto:headachecenter@houstonmethodist.org)

Spine Center  
**281.313.BACK (2225)**  
[spinecenter@houstonmethodist.org](mailto:spinecenter@houstonmethodist.org)

# WE'VE GOT MORE SPOTS THAN EVER!

**SELL US YOUR CAR CENTERS  
NOW LOCATED IN:**

-  **League City**
-  **Cypress (290 @ HWY6)**
-  **The Woodlands**



# SELL US YOUR CAR!

 **TEXASDIRECTAUTO.COM**

Published by Prepared Publications, Inc. To advertise or for more information, contact Prepared Publications at (281) 652-5802, [info@preparedpublications.com](mailto:info@preparedpublications.com), or at: P.O. Box 2191 Missouri City, TX 77459.  
Find more information online at: [www.glenlaurel.net](http://www.glenlaurel.net)

PRSRT STD  
US POSTAGE  
**PAID**  
HOUSTON, TX  
PERMIT #8327

## **HOA NEWSLETTER ADVERTISING WORKS!**

**• Grow Your Business •**

### **Advertise In The Glen Laurel Connections!**

**Call: (281) 652-5802**

**Email: [info@preparedpublications.com](mailto:info@preparedpublications.com)**

## **SUMMER LAWN TIPS:**

It's best to only fertilize your lawn a couple of times a year, once in the spring and then again in midsummer with a food specially blended for lawns. You'll find these blends higher in nitrogen than other elements (the first number in a series of numbers on the fertilizer bag). Nitrogen is what stimulates vigorous growth and deep green color.

One reason to fertilize only a couple of times a year is because fertilizing more often can mean too much growth — you can work constantly trying to keep it mowed and watered. So, by reducing the amount of fertilizer, you can save yourself time and energy. Also, by allowing your grass to grow longer, just by an inch or so more in summer, you can probably reduce your watering a bit more. The taller blades of grass cut down on water evaporation from the soil.

Fertilizing can be confusing because there are so many different blends out there to choose from. For instance,

there are some that actually have pre-emergent herbicide mixed with the fertilizer to keep weed seeds from germinating. Experts say, that if you are going to use pre-emergents, it's better not to use the blends because they're not as effective as applying pre-emergents separately from the fertilizer.

It's always best to fertilize your lawn after mowing and when the grass is dry. If the grass is wet, the fertilizer will stick to the blades and can burn the lawn.

To get even distribution for your lawn, consider setting the gauge at a low setting and go over the area several times, making sure that each pass of the spreader overlaps the last. This will give the lawn a nice even color without dark streaks from over-fertilized areas.

After you have fed it, just water it in. Here's to a great looking lawn all summer!