

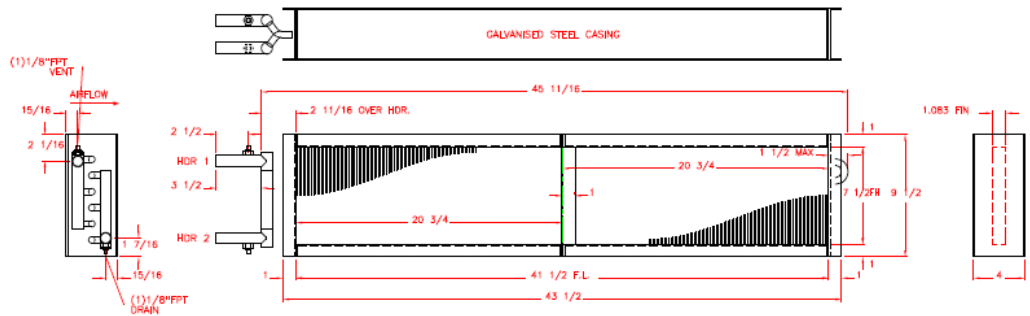
# D-VAC

## HVAC PRODUCT NEWS

### Fall Preview

**IN THIS ISSUE**

- **VRF Supplemental Heaters**
- **Hotel Retrofits**
- **Custom Coils**
- **Stelpro Products**
- **Other Products**
- **ADAMS Gas and Oil Products**
- **Air Zoe**



**ACMU Series Hot Water Coils**

**VRF Systems** are becoming more and more common on both high end residential and commercial applications.

We build both **hot water coils and electric heaters** for these applications.

Never sacrifice comfort when you add the second stage of heating to these systems!!!

**ACMU Series** Hot water Coils are designed to fit most VRF system outlets. Designed with low SP and drain outlets on connections these units are easy retrofit on your jobs.

Also available are **SDHF Series** Modulating Electric Duct Heaters with temperature and air pressure sen-

sors. Built to flange up against the specified VRF units these units are also a fast and easy solution.

From small secondary stage heating applications to monster primary heating or cooling coil or electric heat jobs....

**You can count on D-VAC Sales as your**

**SDHF Series Electric Heaters**

**the number one source for these products.**

Give us a call on your next application

**516 369-4305**

**Hotel retrofits** are becoming a trend as most

hotel chains are looking to upgrade their equipment performance efficiencies to earn tax incentives or even Green points.

Recent projects included:

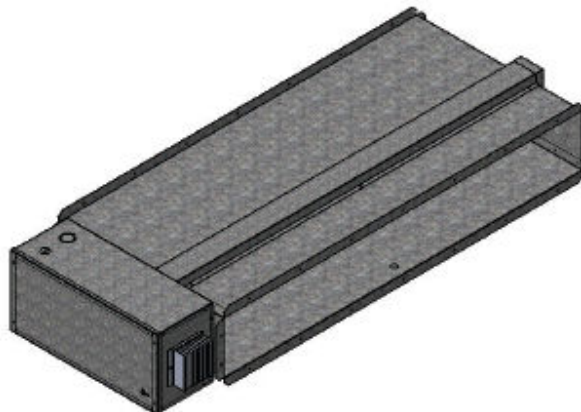
**Grand Hyatt, NYC... 1300 combination chilled/hot water coils.**

**Hyatt Greenwich, CT... 400 Electric Strip Heaters**

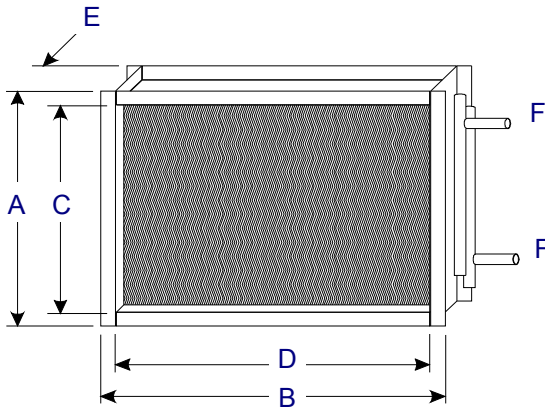
**Marriot Med Center—Houston, TX... 400 plus Hot and Chilled water coils.**

Get your share of the business by contacting your hotel customers staff engineers!!!

**We offer complete measurement services** with performance specifications upon request!!!



# Custom Built Coils



**ATX Series** custom hot water coils are certified to ARI 410 standard. Built to your specifications.

***Don't lose out on jobs, big or small!***  
 1 or 2 week production cycles are available!  
*Steam, Chilled Water & DX Coils also available!*

Just fill out the worksheet below and fax it to **516 599-2000**. Or E-mail: [davidm@h2ocoil.com](mailto:davidm@h2ocoil.com) for same or next day pricing!!

**COIL TYPE:** Hot/Chilled Water    Steam    Other \_\_\_\_\_

### DUCT COIL PERFORMANCE DATA

### NOTES

Item	QTY	ROWS	BTU's	CFM	GPM	EWT	EAT
1							
2							
3							
4							
5							

### DUCT COIL DIMENSIONAL DATA

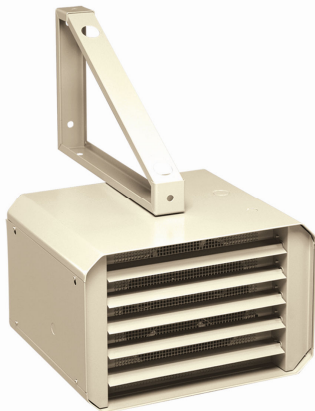
Item	A	B	C	D	E	F
1						
2						
3						
4						
5						

Company	Job Name	Tel. #	E-Mail or Fax #	Contact

## °STELPRO Modulating Electric Furnace / Make Up Air

The **SEFECMB** is equipped with modulating electric heat and an ECM (electronically commutated motor) ensuring increased efficiency and a uniform airflow **It's the pinnacle of comfort and reliability**. Great for make up air, primary or secondary heating applications.

Thanks to the ECM, you will have the opportunity to use the continuous ventilation mode for less. Moreover, since it is more quiet than a PSC (permanent-split capacitor), you can enjoy continuous airflow which maintains constant temperature and increases the efficiency of your humidifier and filtration system. The ECM controls allow flexibility when choosing the desired airflow for each mode. A potentiometer allows to adjust the desired airflow with a high degree of accuracy, resulting in easier adjustments and maximum comfort. The SEFECMB can also be installed in mobile homes using the FSB1 adapter.



## Electric Unit Heaters

°STELPRO designs heaters for all circumstances. **SHU** Unit Heaters are large volume heaters that are distinguished by their appealing appearance, its manufacturing and its sturdy composition. They are usually installed in large garages, but it is not uncommon for it to be seen in warehouses or any other kind of commercial construction site requiring a generous volume of heat. The SHU works with great ease and has an incredible power scale from 2 kW to 60 kW (**7,000 - 188,000 BTU**). Other models are also available to meet commercial, agricultural or residential applications.



New °STELPRO Bathroom Fans.....The STELPRO °1 Series is the professional's choice.

## CFM ranges from 50 to 180 CFM

Optional dual speed fan, optional light, wide choice of capacities, three types of installation and ultra-quiet and lifetime motor lubrication and 5-year warranty.



## D-VAC Sales....Your Source for HVAC Commercial Specification Products

Heating & Cooling Coils, Exhaust & Supply Fans, Louvers & Dampers, Fire-Smoke Rated Dampers, Electric Heaters, Electric Make Up Air Units, Heat / Energy Recovery Units, Air Handlers, Condensing Boilers, Snow Melt Platform Systems, Air Cooled Fluid Coolers, Air Cooled Condensing Units, Water Treatment Systems, Fabric Duct Systems, Air Outlets, VAV Units, Humidifiers, Dehumidification Units, Portable AC Units & COP-HVAC Analyzers



**Gas & Oil Furnaces  
Gas & Oil Burners  
Air Cleaners**



**Gas & Oil Unit Heaters  
Gas Infrared Heaters  
Humidifiers**

"The World's Most Efficient Furnace" 95% efficient condensing oil fired furnace. 50,000 through 250,000 BTU heating, 2.5 through 10 tons cooling, 35% more heat with matching fuel savings. ETL Certified for the USA and Canada. Completely assembled, factory tested furnace, for heating or combination heating/cooling application. For utility room, closet, alcove, basement or attic application. Lowboy, Up-flow, Counter-flow & Horizontal models available. **Gas Furnaces also available!!**

**Classic Compact Unit-Heater** Certified for residential and commercial applications. Designed for natural or LP gases. Attractive low-profile design will blend inconspicuously into any garage decor. Quiet vibration-free operation. Standard power exhaust simplifies side-wall or roof venting with small-diameter vent pipe. Installs quickly and easily with field wiring connections for quick access to gas and electricity. **Oil Unit Heater Also Available!**



**INTERburner** Patented Turbo-Reversed-Air System (TRA) Oil Burner. Inside each INTERburner, TRA stabilizes dynamic pressure while maintaining high static pressure. It creates the most uniform airflow at the combustion head and gives precise control for the most effective mixing of combustion air with the oil on the combustion head... accomplishing efficiency levels never before achieved. INTERburner's flame burns hotter and cleaner... requiring less fuel to heat you home. **Gas Burners Also Available!!!**

**24 Volt Central System Electronic Air Cleaner** Connects with 24 volt wires from the existing transformer on the heating and/or air conditioning unit to the air cleaner directly. Cheaper, faster and easier to install. Eliminates the need for a sail switch or pressure switch with a built-in solid state airflow sensing device. Uses 40VA transformer already on the furnace and/or air conditioner. Power supply boosts the 24-volt input to proper high voltage to the collector cells. Maintains consistent output voltage to the cells for maximum efficiency. **No other air cleaner does this.** With other cleaners, the voltage to the cells drops as they collect and efficiency decreases.



For product specification details go to [www.adamsmanufacturing.com](http://www.adamsmanufacturing.com)

# Need A Job Quote FAST?

Our Air Zoë commercial air movement division is growing....up 200% from last year. All types of **Fans, HRV/ERV, Commercial**



**Control Dampers**

## Specification Grade Air Movement Products



**Commercial H/ERV**



**Commercial Fans**

**Zone Controls, VAV Terminal Units, Air Outlets, Louvers & Dampers** are now available!



**Louvers**



**Send Us Your Schedule!!!**