

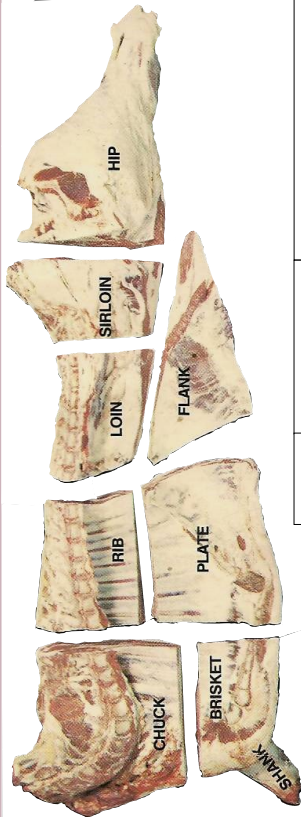
RED DEER LAKE MEAT PROCESSING LTD.

Located a short, pleasant drive south of Calgary, west of Spruce Meadows

Serving Southern Alberta since 1974

Specializing in Custom Slaughter and locally produced Beef, Lamb, & Pork

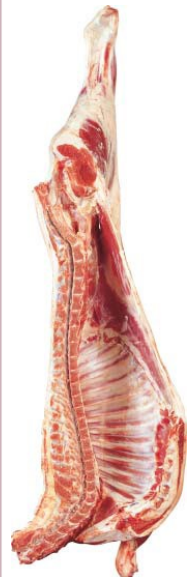
Featuring Local Alberta Beef & Lamb



<p>WHOLE SIDE OF BEEF <i>Cut From 100% Genuine Local Alberta Dry aged Beef.</i> 1 Hind & 1 Front (Avg. 250-300 lbs.) Cut, Wrapped, Frozen & Boxed \$4.79/lb.; Uncut \$4.19/lb</p> <p>SPLIT SIDE OF BEEF –(Half Hind and Half Front) (Approx. Weight before cutting- 150 lbs.) Cut, Wrapped, Frozen & Boxed \$4.89/lb</p>	
<p>FRONT OF BEEF Rib, Chuck, & Brisket (Avg. 130-160 lbs.) Cut, Wrapped, Frozen & Boxed \$4.59/lb. Uncut \$4.09/lb</p>	<p>HIND OF BEEF Hip, Long Loin, & Flank (Avg. 110-140 lbs.) Cut, Wrapped, Frozen & Boxed \$4.99/lb. Uncut \$4.29/lb</p>
<p><i>Price is based on weight before cutting. Price includes cutting, Brown paper freezer wrapping, boxing, and freezing. Custom Beef slaughter also available. Call for current rates & slaughter booking. Custom Beef Slaughter is \$130.00/head; cut & wrap cost: 0.89/lb.</i></p>	

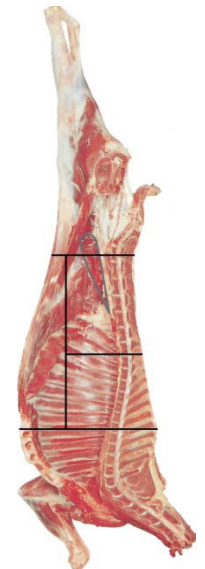


<p>UNCUT BEEF PRIMALS</p> <p>BEEF HIP–Bone in Whole \$4.99/lb. Top(Inside) Round –Whole Bnls \$8.79/lb. Bottom(Outside) Round –Whole Bnls \$8.29/lb. Sirloin Tip –Whole Bnls \$8.79/lb. Whole Blade (chuck)–Bone in uncut \$6.59/lb. Cross Rib–Bone In Whole uncut \$7.29/lb. Brisket Plate–Bone In Whole uncut \$5.19/lb. Top Sirloin Butt –Bnls Whole Uncut \$10.99/lb. Strip Loin –Bnls Whole Uncut \$19.24/lb.</p>		<p>See reverse side for more retail prices</p>
----------------------------------------------------------------------------------------------------------------------------------------------------------------------------------------------------------------------------------------------------------------------------------------------------------------------------------------------------------------------------------------------------------------------------------------------------------------------------------------------------------------------------------------	--	------------------------------------------------



Alberta Lamb

<p>ALBERTA LAMB *Subject to availability Average Carcass Weight : 45-70 lbs; Cut, Wrapped, Frozen & Boxed Carcass-\$9.99/lb. Side \$10.49/lb.</p>	<p>*CARCASS OF GOAT Average Weight : 25-40 lbs; Cut, Wrapped, Frozen & Boxed \$14.00/lb. *Subject to availability</p>
<p>CARCASS OF LAMB Uncut; Market Weight (45-70 lbs) \$9.49/lb. *Subject to availability</p>	<p>*SIDE OF GOAT Avg. Weight : 13-20 lbs. Cut, Wrapped, Frozen & Boxed \$15.49/lb. *Subject to availability</p>
<p>*LAMB CUTS *Subject to availability Whole Leg Bone In-\$17.69/lb. Side Ribs-\$9.99/lb. Loin Chops-\$28.50/lb. Whole Rack-\$25.50/lb. Whole Shoulder Roast–Bone In-\$14.49/lb. Shoulder Chops-\$14.99/lb Whole Shank-\$9.99/lb. Boneless Stew-\$15.99/lb Ground Lamb-\$12.99/lb.</p>	<p>*CARCASS OF LAMB Uncut; Head On Spring Lamb; Under 30 lbs \$14.50/lb. *Subject to availability</p>



Alberta Goat



Main Plant Address

90093 226 Ave West
 Foothills, AB. T1S 2Z2

Ph.-403-256-4925
 Fax: 403-256-8882
 Email: info@rdlmeats.ab.ca
 Website www.rdlmeats.ab.ca



*Please Call 403-256-4925 to place an order.

*Prices in effect until: Dec 31 /2023

Prices are subject to change. Please Call to verify.
 All our Products are from Guaranteed Natural Local Alberta Government Inspected Livestock