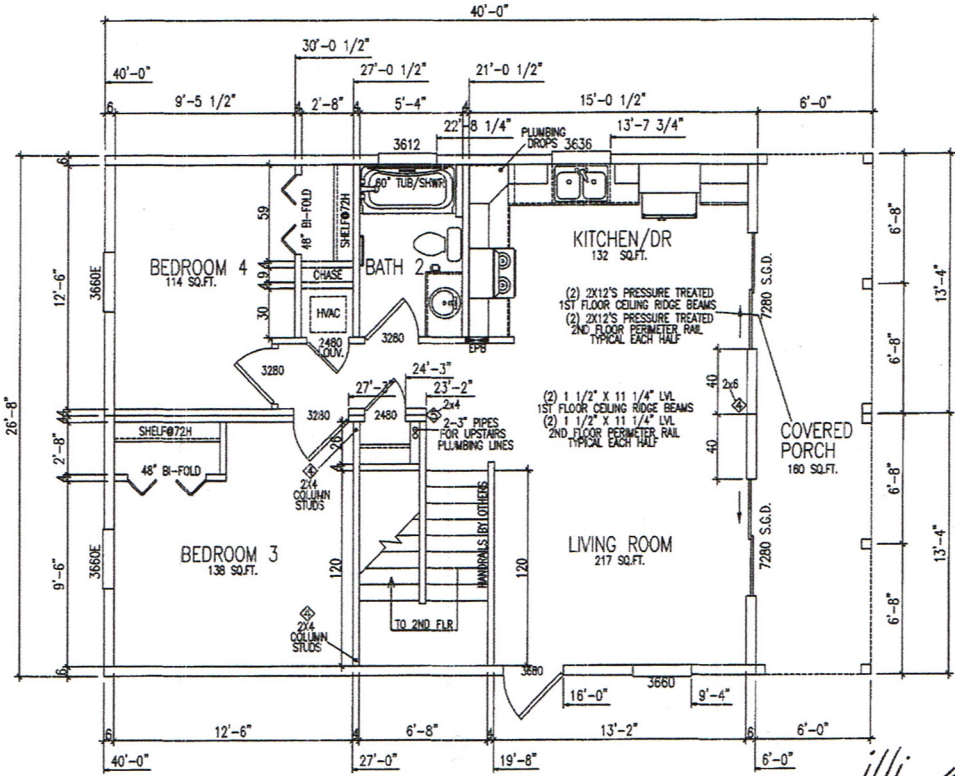




These plans comply with the Florida Manufactured Building Act and approved Codes and adhere to the following criteria:

APPROVED BY
NIA INC.

Client: Type: V.B. - Unprotected
 Occupancy: 2
 Allowable Use: 2
 Wind Velocity: 140 mph
 Earthquake: 0.2
 Allow Floor Load: 20 psf
 Allow Ceiling Load: 10 psf
 Manufacturer: NIA



B-HALF
HITCH END

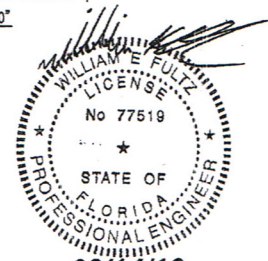
A-HALF
HITCH END

***ART. LIGHT AND VENT PROVIDED**

LIGHT/VENT CHART	FLOOR AREA SQ. FT.	LIGHT		VENT	
		REQUIRED	PROVIDED	REQUIRED	PROVIDED
MASTER BEDROOM	250	20.00	10.00		
		47.70	23.71		
		13.28	6.64		
BEDROOM 2	166	28.40	12.92		
		11.04	5.52		
BEDROOM 3	138	13.20	6.48		
		9.12	4.56		
BEDROOM 4	114	13.20	6.48		
		10.56	5.28		
KITCHEN/DR	132	42.01	20.81		
		17.36	8.68		
LIVING ROOM	217	47.70	23.71		
		6.16	3.08		
OFFICE	77	13.20	6.48		
		--	--		
-	-	--	--		

WINDOW SCHEDULE					
WIDTH	HEIGHT	TYPE	LIGHT SQ. FT.	VENT SQ. FT.	
30"	36"	SINGLE HUNG	6.19	2.05	
30"	60"	SINGLE HUNG	10.88	5.35	
36"	36"	SINGLE HUNG	7.51	3.56	
36"	40"	SINGLE HUNG	8.48	4.05	
36"	60"	SINGLE HUNG	13.20	6.48	
66"	32"	SINGLE HUNG	9.07	1.72	
71"	81"	SINGLE HUNG	34.50	17.25	

2133.6 TOTAL SQUARE FOOTAGE
 1813.6 HEATED & COOLED
 254.67 SQ FT GLAZING



03/14/16
 Building System Engineering, PLLC
 149 Harbour Watch Blvd.
 Leesville, SC 29070
 Ph: (803) 808-3491

FINER LINES
 DESIGN & CONSTRUCTION, INC

DATE: 2/13/2016	3RD PARTY INSPECTION AGENCY
CODES: 2014 FBC	NTA INC.
LABELS: FLORIDA	335 NORTH OAKLAND AVE
SCALE: NTS	NAPPANEE, IN 46555
MODELS:	Contact: Dave Borts (574-773-2732)
MFT2437-MD404-612-108	DRAWN BY: Jerry Benton
DRAWING: 1ST FLOOR MASTER PLAN	SHEET 4
ENGINEERING & PLAN DEVELOPMENT	BUILDING SYSTEM ENGINEERING
	149 HARBOUR WATCH BLVD.
	LEESVILLE, SC 29070