

A & L Vault Company, Inc.

P.O. Box 815 Athens, AL 35612
800-328-8670 **Office** 256-232-2100 **Office** 256-230-0075 **Fax**

WATER *SEWER *ELECTRIC *STORM DRAIN *CONCRETE VAULTS

A&L Vault Company, Inc. is located in Athens, AL and has been producing concrete vaults since 1993 for the utility industry. We deliver throughout the southeast with standard sized as well as custom designed vaults for applications including meters, backflow preventers, fire department connections, air release/ altitude/ pressure reducing/ plug valves, etc., etc.

We offer a turnkey product that we build and deliver to your desired location. At our facility in Athens we build a rebar cage for the size vault ordered and pour 4000 psi concrete reinforced with fiber mesh. After the vault is finished and cured the components are assembled and pressure tested before it is loaded for delivery. At the same time, we are fabricating the lid from checker plate aluminum, steel, or concrete to meet foot traffic to occasional H-20 loads.

One feature that we offer is unique to this industry. We can vary the depth of our pours to provide "shallow pattern" vaults as short as 16" and meet any elevation required. The shallow vaults require less excavation, are easier to work out of, and are a plus in areas of high water tables or rocky soil. In addition, we can pour on a slope to blend in to the existing landscape.

Many systems and engineers are using ***A&L*** as the standard for their needs. As is the case with other material in their system such as meters, brass, or hydrants, customers are making our vaults part of their specs and include it in their *tapping fee*. This ensures a standardized and consistent product that simplifies maintenance and maintains the quality they want. We will be happy to work with you to develop a vault designed to your requirements. Following are letters of reference that you are welcome to contact. Thank you.

Turner Yarbrough
Sales Manager
256-431-3685

City of Cullman

Water & Wastewater

Junior Heaton, Water & Wastewater Supt.

P.O. Box 278

Cullman, AL 35056

Ph: 256-775-7210

Fax: 256-739-9351

To Whom It May Concern:

I have been using vaults made by A & L Vault Company for many years. I have found that their products are well made, their service to be excellent and their staff very easy to work with. I would recommend them and their products to anyone. When it comes to meter vaults I will only use A & L Vaults for the City of Cullman Water Department.

Sincerely,

Junior Heaton, Supt.
City of Cullman Water & Wastewater Dept.
256-775-7210



Redstone Arsenal ISS Program
P.O. Box 8200
Redstone Arsenal, AL 35808-0200

April 22, 2011

To Whom It May Concern:

It gives me great pleasure to recommend A&L Vault Company to your firm. I have worked with A&L Vault Company for a number of years. In that time, they have provided several vaults of various sizes to our company in support of base operations here on Redstone Arsenal. Their service is of the highest standard and the quality of their vault products is exceptional.

I recommend them with enthusiasm, and if given the opportunity, I would not hesitate to use their products and services again.

Sincerely,

Beverly Wilson, Buyer
Chugach Federal Solutions Inc.
Redstone ISS Program

Guntersville Water & Sewer Board, Inc.

Jack Swann, Manager
Office: (256) 582-5931
Fax: (256) 582-6923
Website: guntersvillewaterboard.com



Jerry A. Nabors, Chairman
Frank Richter, Jr., Vice-Chairman
L. Dwain Elder

329 Gunter Avenue • Guntersville, AL 35976

April 25, 2011

Birmingham Water Works Board
3600 1st Avenue North
Birmingham, AL 35222
Attn: Mr. Geoff Goodwin

Re: Concrete Meter and Valve Vaults
Eagle Wholesale Supply

The Guntersville Water and Sewer Board have been installing the meter and valve vaults supplied by Eagle Wholesale almost exclusively for over 10 years.

We have found the concrete vaults are of high quality and have been favored by our maintenance personnel. Brian Norrell, our Maintenance Supervisor, likes the placement and addition of the "lifting eyes" for easier maneuvering during installation.

We highly recommend using these vaults.

Sincerely,

A handwritten signature in black ink, appearing to read "Jack Swann", written in a cursive style.

Jack Swann
Manager



HUNTSVILLE UTILITIES

ELECTRICITY - NATURAL GAS - WATER
TELEPHONE 205/535-1200

P.O. Box 2048
HUNTSVILLE, ALABAMA 35804

April 25, 2011

To whom it may concern:

Huntsville Utilities has been utilizing concrete vaults as manufactured by A&L Vault Company in our Water, Gas, and Electric systems for over fifteen years.

We have found their products to be of good quality and delivery to be on time. A&L has always responded quickly to resolve any problems that might arise and have been very helpful in designing custom vaults.

We would recommend A&L Vault Company to anyone requiring concrete vaults for any use.

Sincerely,
Bill Hopper
Senior Buyer
Huntsville Utilities



Mitchell Industrial Contractors, Inc.
188 Westchester Drive Madison, AL 35758
(256) 772-5554 Fax (256) 772-5579
www.mitchellindustrialcontractors.com

Letter of Recommendation

Date: April 27, 2011

RE: A&L Vault Company

To Whom It May Concern:

Mitchell Industrial Contractors, Inc. purchased four 6'x9' vaults with depths between 5' to 15'. The vaults were very well constructed and met or exceeded our client's specifications. The whole process, from quote to delivery, went very smooth. A&L Vault Company provided a superior product and I have no reservations in recommending their vaults.

Sincerely,

A handwritten signature in blue ink, appearing to read "Justin Dorning", is written over a light blue horizontal line.

Justin Dorning
Vice President/CFO
Mitchell Industrial Contractors, Inc.
256-772-5554 ext 105
justin@mitchellindustrialcontractors.com



April 29, 2011

A & L Vault Co.
111 E. Pryor St.
Athens, Alabama 35611

Mr. Curtis Anderson and Mr. Turner Yarbrough,

I would like to thank you and your company for our most recent shipment of “All-In-One-Vault” units and for the way you handled our last minute request. Needless to say, MLGW was in a bind for these vaults and upon shipment of the meters, you were able to provide less than a few days turn around and the vaults were to us ready for use.

MLGW and A&L have been doing business together since 1998 and you are our only vendor for a complete turn key, ready to use vault and water meter assembly. This is due to the dedication and devotion, of your company, to the needs of MLGW and in providing an exceptional product. Your product arrives to us as scheduled and ready to use. I can honestly state that in the 13 years of working with A&L, we have never had a quality issue or shipment problem. Your company has always gone above and beyond to provide us with what we need, when we need it.

Once again let me say thanks for a job well done and please express to your company how much I and MLGW appreciate their professionalism and the way you “stand by your word”.

Sincerely,

David Vick
Supervisor, Customer Metering: Water
Memphis Light Gas and Water Division
Memphis Tennessee

West Lawrence Water Co-Op

P. O. Box 8

Mount Hope, AL 35651

Phone: (256) 974-9114

Fax: (256) 905-0480

Email: westlawh2o@att.net

April 20, 2011

To Whom It May Concern:

Our company has been a customer of A & L Vault Company for many years and have remained extremely satisfied with their products and service. Orders are always filled in a timely manner, they offer competitive prices and the customer service is outstanding.

We look forward to many more years of exceptional service with the company.

Sincerely,

Kevin Martin
General Manager

Product Code	Description	Estimated Pounds	Internal Length	Internal Width	Internal Depth	Thickness of Top Wall	Thickness of Bottom Wall	Floor Thickness	External Length	External Width	External Height
A&L3636ALM	3636 Aluminum Hydraulic Lid	66	34.5" 2'-10 1/2"	34.5" 2'-10 1/2"					41" 3'-5"	41" 3'-5"	
A&L3636SLAB	3636 Concrete Slab for Frame & Grate	573							42" 3'-6"	42" 3'-6"	3-5/8"
A&L3636CV	3636 Concrete Vault	2273	36" 3'-0"	36" 3'-0"	36" 3'-0"	3"	4"	3"	42" 3'-6"	42" 3'-6"	39" 3'-3"
A&L3636DHN	3636 Dog House - Notched	1532	36" 3'-0"	36" 3'-0"	36" 3'-0"	3"	4"		42" 3'-6"	42" 3'-6"	36" 3'-0"
A&L3636RIS	3636 X ___" Concrete Riser	42 PER INCH RISE	36" 3'-0"	36" 3'-0"	VARIES	3"	4"		42" 3'-6"	42" 3'-6"	VARIES
A&L3636SP	3636 Shallow Pattern Vault	42 PER INCH RISE	36" 3'-0"	36" 3'-0"	VARIES	3"	4"	3"	42" 3'-6"	42" 3'-6"	VARIES
A&L4848ALM	4848 Aluminum Hydraulic Lid	100	46.5" 3'-10 1/2"	46.5" 3'-10 1/2"					53" 4'-5"	53" 4'-5"	
A&L4848CV	4848 Concrete Vault	3500	48" 4'-0"	48" 4'-0"	48" 4'-0"	3"	4"	4"	54" 4'-6"	54" 4'-6"	52" 4'-4"
A&L4848DHN	4848 Dog House - Notched	3000	48" 4'-0"	48" 4'-0"	48" 4'-0"	3"	4"		54" 4'-6"	54" 4'-6"	52" 4'-4"
A&L4848RIS	4848 X ___" Concrete Riser	62 PER INCH RISE	48" 4'-0"	48" 4'-0"	VARIES	3"	4"		54" 4'-6"	54" 4'-6"	VARIES
A&L4848SP	4848 Shallow Pattern Vault	73 PER INCH RISE	48" 4'-0"	48" 4'-0"	VARIES	3"	4"	4"	54" 4'-6"	54" 4'-6"	VARIES
A&L6234ALM	6234 Aluminum Hydraulic Lid	113	59 3/4" 4'-11 1/2"	30 1/2" 2'-6 1/2"					66" 5'-6"	37" 3'-1"	
A&L6234CV	6234 Concrete Vault	2271	62" 5'-2"	34" 2'-10"	29" 2'-5"	2"	3"	3"	66" 5'-6"	38" 3'-2"	32" 2'-8"
A&L6234DHN	6234 Dog House - Notched	1146	62" 5'-2"	34" 2'-10"	29" 2'-5"	2"	3"		66" 5'-6"	38" 3'-2"	32" 2'-8"
A&L6234RIS	6234 X ___" Concrete Riser	30 PER INCH RISE	62" 5'-2"	34" 2'-10"	VARIES	2"	3"		66" 5'-6"	38" 3'-2"	VARIES
A&L6234SP	6234 Shallow Pattern Vault	30 PER INCH RISE	62" 5'-2"	34" 2'-10"	VARIES	2"	3"	3"	66" 5'-6"	38" 3'-2"	VARIES
A&L8434ALM	8434 Aluminum Hydraulic Lid	117	81 3/4" 6'-9 3/4"	30 1/2" 2'-6 1/2"					88" 7'-4"	37" 3'-1"	
A&L8434CV	8434 Concrete Vault	3042	84" 7'-0"	34" 2'-10"	29" 2'-5"	2"	3"	3"	88" 7'-4"	38" 3'-2"	32" 2'-8"
A&L8434DHN	8434 Dog House - Notched	2277	84" 7'-0"	34" 2'-10"	29" 2'-5"	2"	3"		88" 7'-4"	38" 3'-2"	32" 2'-8"
A&L8434RIS	8434 X ___" Concrete Riser	78 PER INCH RISE	84" 7'-0"	34" 2'-10"	VARIES	2"	3"		88" 7'-4"	38" 3'-2"	VARIES
A&L8434SP	8434 Shallow Pattern Vault	78 PER INCH RISE	84" 7'-0"	34" 2'-10"	VARIES	2"	3"	3"	88" 7'-4"	38" 3'-2"	VARIES

Please note the CAD drawings included are drawn to scale but through the publication of this catalog the drawings are reduced therefore, they will not scale correctly. There are CAD Files available upon request, you may contact Nick Anderson at the office 256-232-2100 if you need a CAD file to include in your drawings and they will be sent to you.

Product Code	Description	Estimated Pounds	Internal Length	Internal Width	Internal Depth	Thickness of Top Wall	Thickness of Bottom Wall	Floor Thickness	External Length	External Width	External Height
A&L7248ALM	7248-2L Aluminum Hydraulic Lid	144	70 1/2" 5'-10 1/2"	46" 3'-10"					77" 6'-5"	53" 4'-5"	
A&L7248SLAB4	7248 Concrete Slab with 3636 Out	1560							78" 6'-6"	54" 4'-6"	3-5/8"
A&L7248CV4	7248 Concrete Vault	5811	72" 6'-0"	48" 4'-0"	48" 4'-0"	3"	4"	4"	78" 6'-6"	54" 4'-6"	52" 4'-4"
A&L7248DHN4	7248 Dog House - Notched	4587	72" 6'-0"	48" 4'-0"	48" 4'-0"	3"	4"		78" 6'-6"	54" 4'-6"	52" 4'-4"
A&L7248RIS4	7248 X ___" Concrete Riser	95 PER INCH RISE	72" 6'-0"	48" 4'-0"	VARIES	3"	4"		78" 6'-6"	54" 4'-6"	VARIES
A&L7248SP4	7248 Shallow Pattern Vault	95 PER INCH RISE	72" 6'-0"	48" 4'-0"	VARIES	3"	4"	4"	78" 6'-6"	54" 4'-6"	VARIES
A&L7248ALM	7248-2L Aluminum Hydraulic Lid	144	70 1/2" 5'-10 1/2"	46" 3'-10"					77" 6'-5"	53" 4'-5"	
A&L7248SLAB6	7248-6 Concrete Slab with 3636 Out	2312							84" 7'-0"	60" 5'-0"	3-5/8"
A&L7248CV6	7248-6 Concrete Vault	12596	72" 6'-0"	48" 4'-0"	54" 4'-6"	6"	7"	6"	84" 7'-0"	60" 5'-0"	61" 5'-1"
A&L7248DHN6	7248-6 Dog House - Notched	9221	72" 6'-0"	48" 4'-0"	54" 4'-6"	6"	7"		84" 7'-0"	60" 5'-0"	54" 4'-6"
A&L7248RIS6	7248-6 X ___" Concrete Riser	107 PER INCH RISE	72" 6'-0"	48" 4'-0"	VARIES	6"	7"		84" 7'-0"	60" 5'-0"	VARIES
A&L7248SP6	7248-6 Shallow Pattern Vault	107 PER INCH RISE	72" 6'-0"	48" 4'-0"	VARIES	6"	7"	6"	84" 7'-0"	60" 5'-0"	VARIES
A&L9648ALM	9648-2L Aluminum Hydraulic Lid	192	94 1/2" 7'-10 1/2"	46" 3'-10"					101" 8'-5"	53" 4'-5"	
A&L9648SLAB	9648 Concrete Slab with 3636 Out	2,336							102" 8'-6"	54" 4'-6"	3-5/8"
A&L9648CV	9648 Concrete Vault	8,075	96" 8'-0"	48" 4'-0"	48" 4'-0"	3"	4"	4"	102" 8'-6"	54" 4'-6"	52" 4'-4"
A&L9648DHN	9648 Dog House - Notched	5,772	96" 8'-0"	48" 4'-0"	48" 4'-0"	3"	4"		102" 8'-6"	54" 4'-6"	48" 4'-0"
A&L9648RIS	9648 X ___" Concrete Riser	106 PER INCH RISE	96" 8'-0"	48" 4'-0"	VARIES	3"	4"		102" 8'-6"	54" 4'-6"	VARIES
A&L9648SP	9648 Shallow Pattern Vault	106 PER INCH RISE	96" 8'-0"	48" 4'-0"	VARIES	3"	4"	4"	102" 8'-6"	54" 4'-6"	VARIES
A&L9660ALM	9660 -2L Aluminum Hydraulic Lid	219	95" 7'-11"	58" 4'-10"					101" 8'-5"	65" 5'-5"	
A&L9660SLAB	9660-6 Concrete Slab with 3636 Out	3,480							108" 9'-0"	72" 6'-0"	3-5/8"
A&L9660CV6	9660-6 Concrete Vault	15,989	96" 8'-0"	60" 5'-0"	54" 4'-6"	6"	7"	6"	108" 9'-0"	72" 6'-0"	60" 5'-0"
A&L9660DHN	9660-6 Dog House - Notched	13,739	96" 8'-0"	60" 5'-0"	54" 4'-6"	6"	7"		108" 9'-0"	72" 6'-0"	54" 4'-6"
A&L9660RIS	9660-6 X ___" Concrete Riser	255 PER INCH RISE	96" 8'-0"	60" 5'-0"	VARIES	6"	7"		108" 9'-0"	72" 6'-0"	VARIES
A&L9660SP	9660-6 Shallow Pattern Vault	255 PER INCH RISE	96" 8'-0"	60" 5'-0"	VARIES	6"	7"	6"	108" 9'-0"	72" 6'-0"	VARIES

A&L-3636ALM

3636 Aluminum Lid – 300 PSI Foot Traffic Rated

- 🔑 1/4" Aluminum checker plate with stainless steel thumb latch cab lock for inside escape and T handle keyed for outside entry.
- 🔑 For additional security, the access door can be equipped with a staple for padlock as an option.
- 🔑 Single leaf
- 🔑 Full length aluminum piano hinges
- 🔑 Four tabs on inside to allow anchoring to sidewall to prevent theft
- 🔑 Water raceway inside attached to 1" drain to route to floor drain
- 🔑 Gas shocks applied to compensate for weight of door
- 🔑 Kickstand to prevent accidental closure

A & L Vault
Company

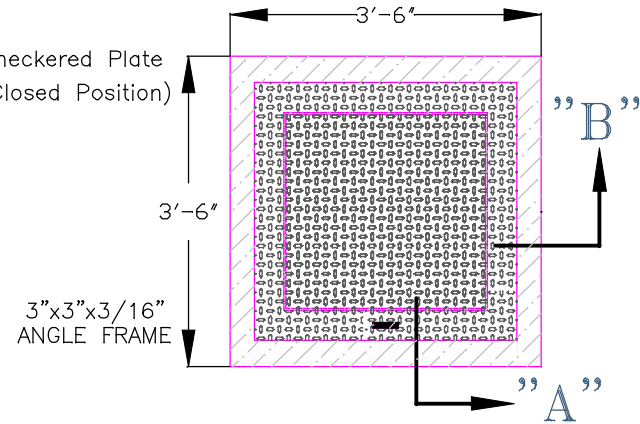
P.O. Box 815
111 E.Pryor St.
Athens AL, 35612

(256) 232-2100
Scale 1/4" = 1"

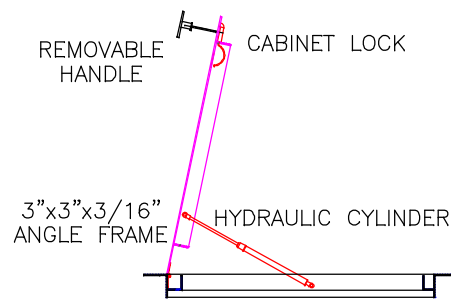
ALUMINUM HYDRAULIC LID CONSTRUCTION FEATURES

- 1/4" Aluminum Checkered Plate
- 3"x3"x3/16" Aluminum Angle Frame
- 120 Force Lbs Hydraulic Cylinder
- 2"x2"x1/8" Water Channel with 1" Drain
- Stainless Steel Cabinet Lock
- Removeable T-Handle for Security
- Full Length Piano Hinge

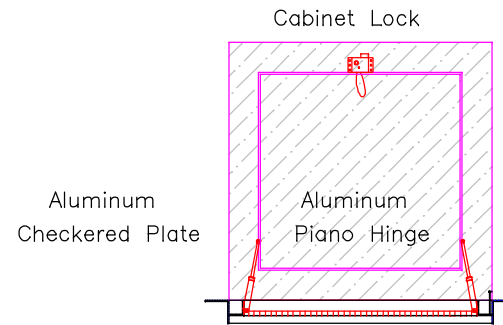
Aluminum Checkered Plate
(Lid Shown In Closed Position)



Top View



Side View A



Front View B

A&L-3636SLAB

3636 Concrete Lid – Foot Traffic Only

Dimensions: Length x Width x Depth

Outside: 42" x 42" x 3-5/8"

 24" x 24" Aluminum checker plate lid rated foot traffic cast into 3-5/8" concrete slab

Company

A & L Vault

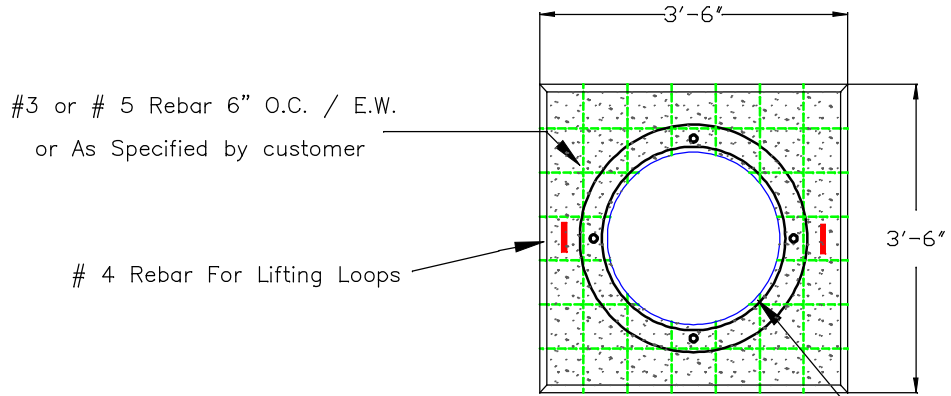
P.O. Box 815
111 E.Pryor St.
Athens AL, 35612

(256) 232-2100
Scale 1/2" = 1"

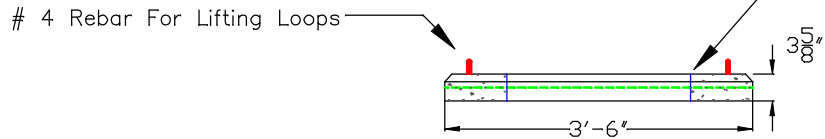
A&L-3636SLAB

SLAB CONSTRUCTION FEATURES

- 4,000 PSI Fiberglass Reinforced Concrete Mix
- #3 or # 5 Rebar or As Specified
- 1-1/4" Lifting Holes
- Pipe Penetrations Sealed with Waterproofing



TOP VIEW



SIDE VIEW

Manhole Frame & Cover shown.
The Slab is also available with
24" x 24" Frame & Grate.

Please note that the dimensions are typical due to variations during the curing may have minute changes

A&L-3636SLAB

A&L-3636CV

3636 Concrete Vault – Standard

Dimensions:	Length x Width x Depth
Inside:	36" x 36" x 36"
Outside:	42" x 42" x 39"

- 🔑 4000 psi concrete mix with Fiber Mesh added for reinforcement
- 🔑 Rebar supports for lifting and penetrations
- 🔑 Four steel lifting hooks imbedded in floor
- 🔑 Vault walls taper from top to bottom inside dimensions are less at bottom
- 🔑 4" Drain cast into floor, a sump hole is available as an option instead of 4" drain
- 🔑 Pipe penetrations are sleeved and grouted to maintain structural integrity and can be located per customer's request at no charge
- 🔑 Option to pour on a slope to match existing terrain
- 🔑 Risers and dog house notched available
- 🔑 Vaults available with or without a bottom

Company

A & L Vault

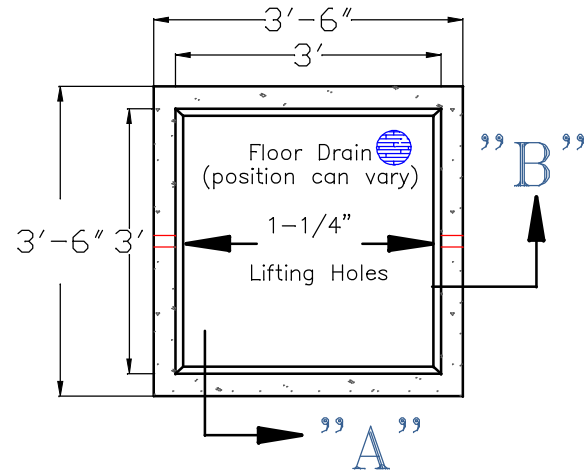
P.O. Box 815
111 E.Pryor St.
Athens AL, 35612

(256) 232-2100
Scale 1/4" = 1"

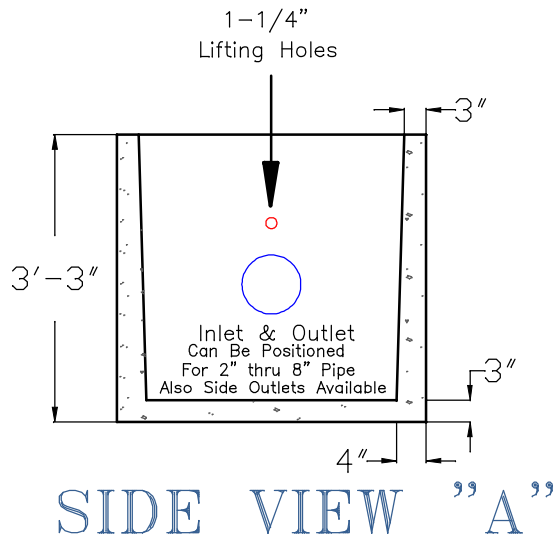
A&L-3636CV

VAULT CONSTRUCTION FEATURES

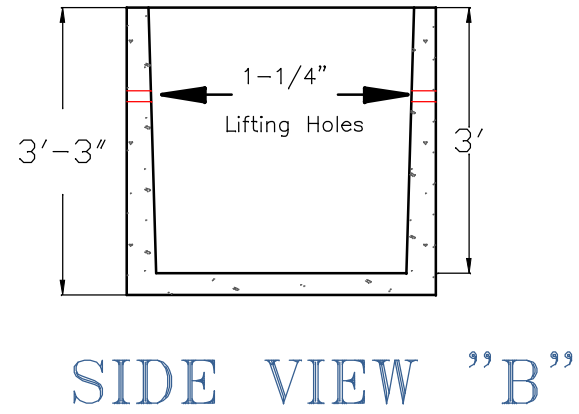
- 4,000 PSI Fiberglass Reinforced Concrete Mix
- #3 or # 5 Rebar or As Specified
- 1-1/4" Lifting Holes
- Pipe Penetrations Sealed with Waterproofing



TOP VIEW



SIDE VIEW "A"



SIDE VIEW "B"

Please note that the dimensions are typical due to variations during the curing may have minute changes

A&L-3636CV

A&L-3636DHN

3636 Concrete Vault - Dog House Notched – No Bottom

Dimensions: Length x Width x Depth

 Inside: 36" x 36" x 36"

 Outside: 42" x 42" x 36"

- 🔑 4000 psi concrete mix with Fiber Mesh added for reinforcement
- 🔑 Rebar supports for lifting and penetrations
- 🔑 Option to pour on a slope to match existing terrain
- 🔑 Notched out per customer requirement for depth and size to drop over existing line

A & L Vault

Company

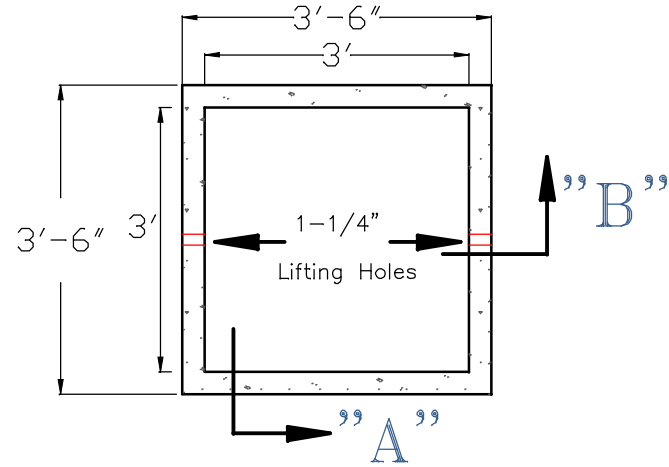
P.O. Box 815
111 E.Pryor St.
Athens AL 35612

(256) 232-2100
Scale 1/4" = 1"

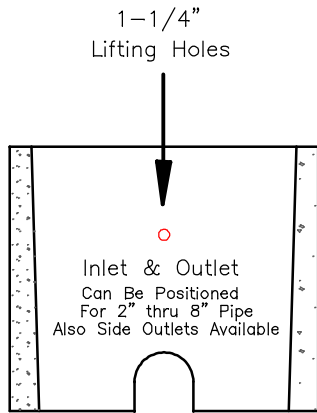
A&L-3636DHN

VAULT CONSTRUCTION FEATURES

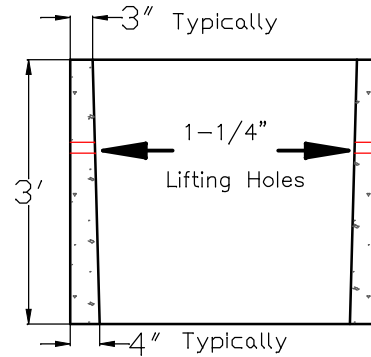
- 4,000 PSI Fiberglass Reinforced Concrete Mix
- #3 or # 5 Rebar or As Specified
- 1-1/4" Lifting Holes
- Pipe Penetrations Sealed with Waterproofing



TOP VIEW



SIDE VIEW "A"



SIDE VIEW "B"

Please note that the dimensions are typical due to variations during the curing process minute changes may occur

A&L-3636DHN

A&L-3636RIS

3636 Concrete Vault – Risers

Dimensions: Length x Width x Depth
 Inside: 36" x 36" x Varies (15" to 36")
 Outside: 42" x 42" x Varies (15" to 36")

- 🔑 4000 psi concrete mix with Fiber Mesh added for reinforcement
- 🔑 Rebar supports for lifting and penetrations
- 🔑 Depth available in 15" through 36" to hit exact elevation requirement
- 🔑 Multiple risers may be stacked to achieve desired depths
- 🔑 Ramneck sealant provided to prevent infiltration

A & L Vault Company

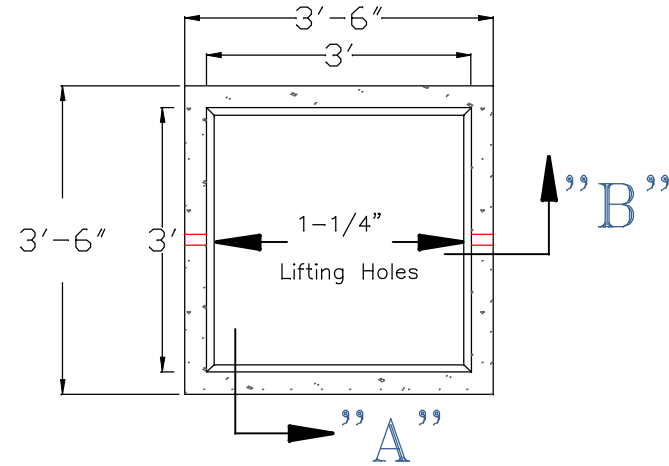
P.O. Box 815
111 E. Pryor St.
Athens Al. 35612

(256) 232-2100
Scale 1/4" = 1"

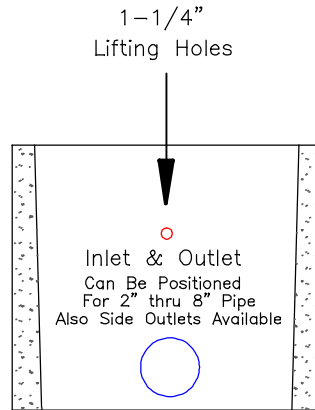
A&L-3636RIS

VAULT CONSTRUCTION FEATURES

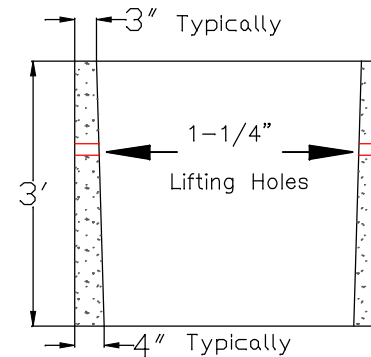
- 4,000 PSI Fiberglass Reinforced Concrete Mix
- #3 or # 5 Rebar or As Specified
- 1-1/4" Lifting Holes
- Pipe Penetrations Sealed with Waterproofing



TOP VIEW



SIDE VIEW "A"



SIDE VIEW "B"

NOTE:
Riser height can vary
from 1'-3' to 3'-0"

Please note that the dimensions are typical due to variations during the curing process minute changes may occur

A&L-3636RIS

A&L-3636SP

3636 Concrete Vault – “Shallow Pattern”

Dimensions:	Length x Width x Depth
Inside:	36” x 36” x Varies (15” to 36”)
Outside:	42” x 42” x Varies (15” to 39”)

- 🔑 4000 psi concrete mix with Fiber Mesh added for reinforcement
- 🔑 Rebar supports for lifting and penetrations
- 🔑 Four steel lifting hooks imbedded in floor
- 🔑 4” Drain cast into floor, a sump hole is available as an option instead of 4” drain
- 🔑 Pipe penetrations are sleeved and grouted to maintain structural integrity and can be located per customer’s request at no charge
- 🔑 Option to pour on a slope to match existing terrain

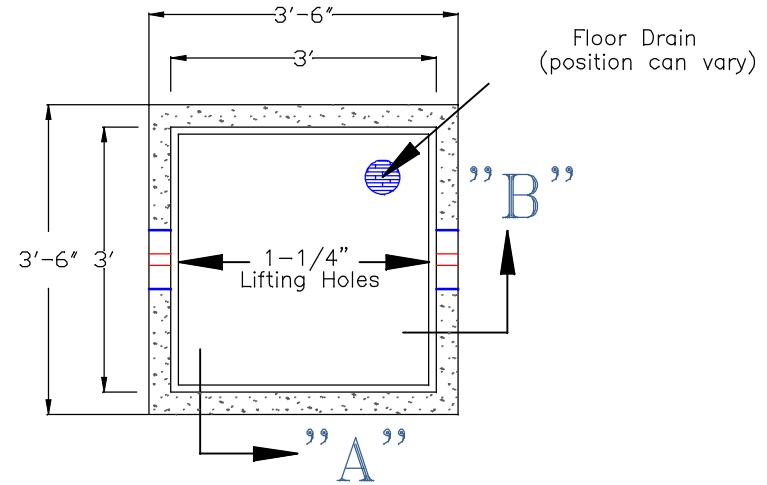
A & L Vault
Company

P.O. Box 815
111 E.Pryor St.
Athens, AL 35612

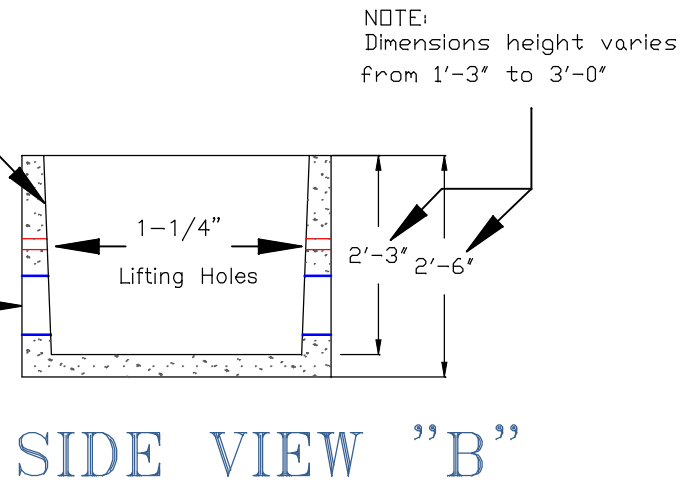
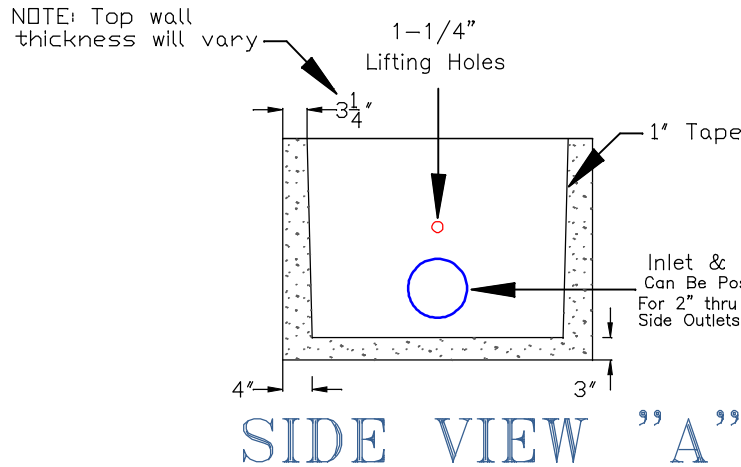
(256) 232-2100
Scale 1/4" = 1"

VAULT CONSTRUCTION FEATURES

- 4,000 PSI Fiberglass Reinforced Concrete Mix
- #3 or # 5 Rebar or As Specified
- 1-1/4" Lifting Holes
- Pipe Penetrations Sealed with Waterproofing



TOP VIEW



Please note that the dimensions are typical due to variations during the curing may have minute changes

A&L-3636SP (SHALLOW PATTERN)

A&L-3636SP

A&L-4848ALM

4848 Aluminum Lid – 300 PSI Foot Traffic Rated

- 👂 ¼" Aluminum checker plate with stainless steel thumb latch cab lock for inside escape and T handle keyed for outside entry.
- 👂 For additional security an optional pad locking system is available.
- 👂 Single leaf door
- 👂 Full length piano hinges.
- 👂 Four tabs inside to allow anchoring to sidewall to prevent theft.
- 👂 Water raceway inside attached to a 1" drain to route to floor drain.
- 👂 Gas shocks installed to compensate for the weight of the door.
- 👂 Kick stand to prevent accidental closure.

Company

A & L Vault

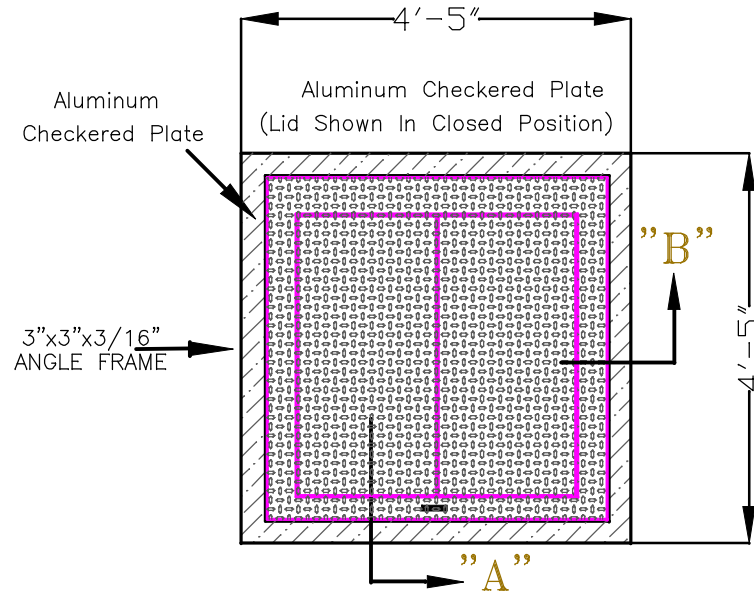
P.O. Box 815
111 E.Pryor St.
Athens Al. 35612

(256) 232-2100
Scale 1/4" = 1"

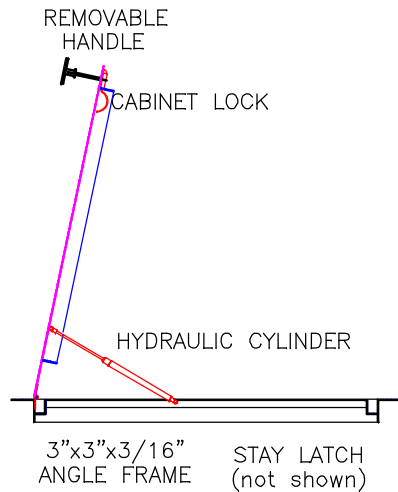
A&L-4848ALM

ALUMINUM HYDRAULIC LID LID CONSTRUCTION FEATURES

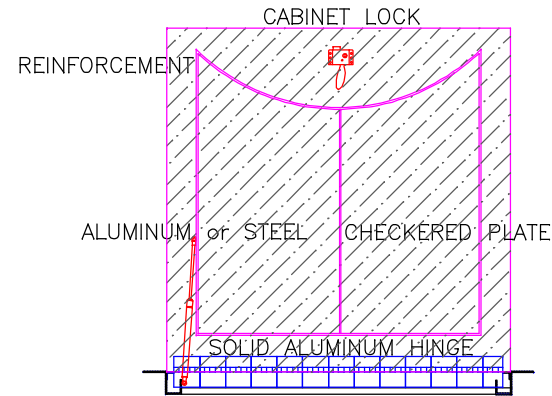
- 3"x3"x3/16" Aluminum Angle Frame
- 120 Force lbs Hydraulic Cylinder
- 2"x2"x1/8" Water Channel with 1" Drain
- Stainless Steel Cabinet Lock
- Removeable T-Handle for Security
- Full Length Piano Hinge



TOP VIEW



SIDE VIEW "A"



FRONT VIEW "B"

A&L-4848ALM

A&L-4848CV

4848 Concrete Vault – Standard

Dimensions:	Length x Width x Depth
Inside:	48" x 48" x 48"
Outside:	54" x 54" x 52"

- 🔊 4000 psi concrete mix with Fiber Mesh added for reinforcement
- 🔊 Rebar supports for lifting and penetrations
- 🔊 Four steel lifting hooks imbedded in floor
- 🔊 4" Drain cast into floor
- 🔊 Pipe penetrations are sleeved and grouted to maintain structural integrity and can be located per customer's request at no charge
- 🔊 Option to pour on a slope to match existing terrain
- 🔊 Risers and dog house notched available

Company

A & L Vault

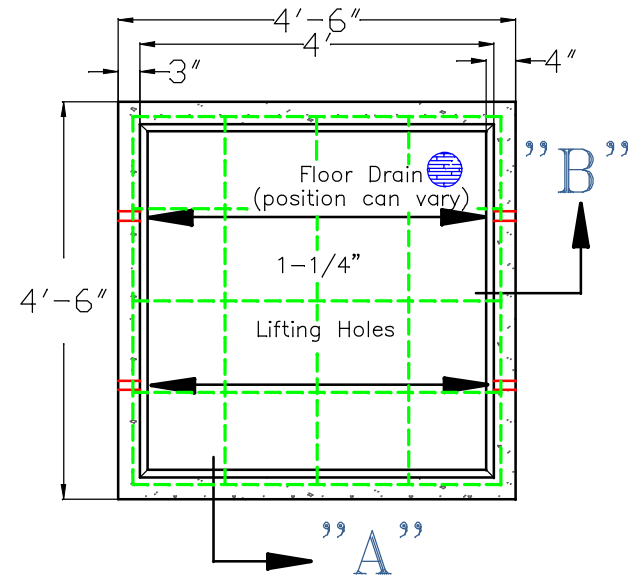
P.O. Box 815
111 E.Pryor St.
Athens, AL, 35612

(256) 232-2100
Scale N.T.S.

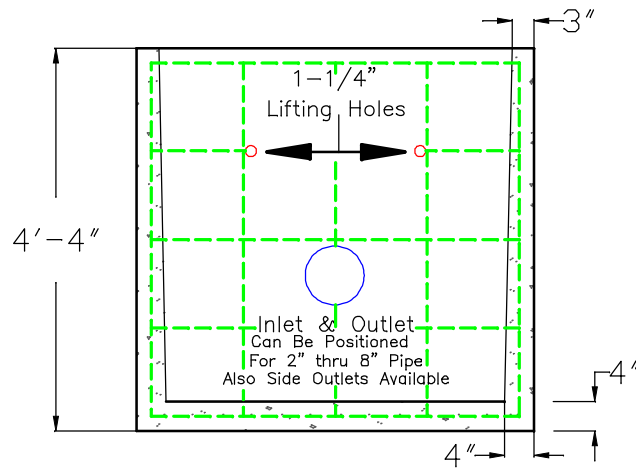
A&L-4848CV

VAULT CONSTRUCTION FEATURES

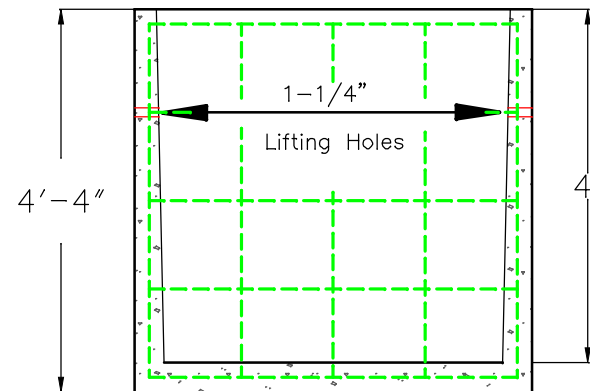
- 4,000 PSI Fiberglass Reinforced Concrete Mix
- #3 or # 5 Rebar or As Specified
- 1-1/4" Lifting Holes
- Pipe Penetrations Sealed with Waterproofing



TOP VIEW



SIDE VIEW "A"



SIDE VIEW "B"

Please note that the dimensions are typical due to variations during the curing may have minute changes

A&L-4848CV

A&L-4848DHN

4848 Dog House Notched – No Bottom

Dimensions:	Length x Width x Depth
Inside:	48" x 48" x 48"
Outside:	54" x 54" x 48"

- 👂 4000 psi concrete mix with Fiber Mesh added for reinforcement
- 👂 Rebar supports for lifting and penetrations
- 👂 Option to pour on a slope to match existing terrain
- 👂 Notched out per customer requirement for depth and size to drop over existing line

Company

A & L Vault

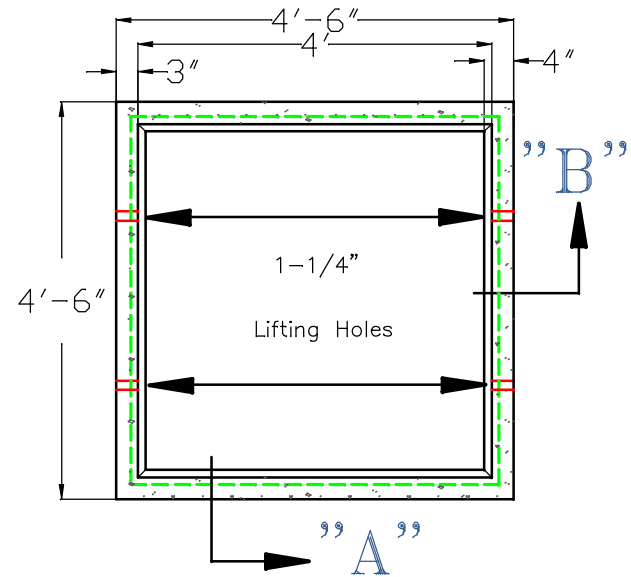
P.O. Box 815
111 E.Pryor St.
Athens, AL, 35612

(256) 232-2100
Scale N.T.S.

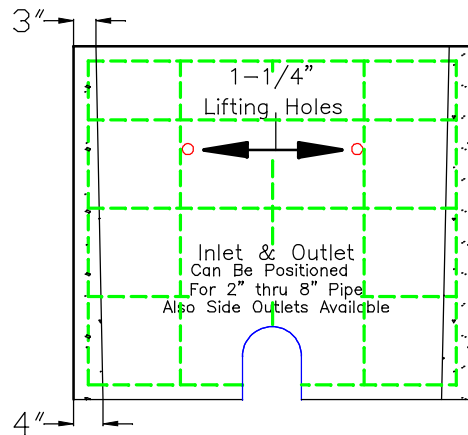
A&L-4848DHN

VAULT CONSTRUCTION FEATURES

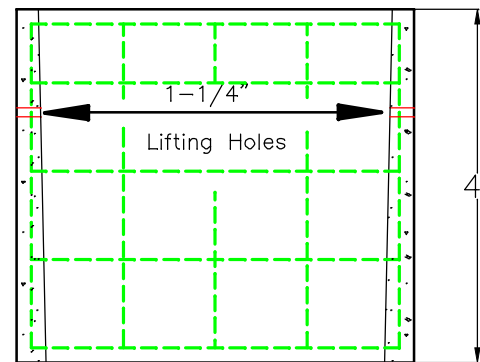
- 4,000 PSI Fiberglass Reinforced Concrete Mix
- #3 or # 5 Rebar or As Specified
- 1-1/4" Lifting Holes
- Pipe Penetrations Sealed with Waterproofing



TOP VIEW



SIDE VIEW "A"



SIDE VIEW "B"

Please note that the dimensions are typical due to variations during the curing may have minute changes

A&L-4848DHN

A&L-4848RIS

4848 Concrete Vault – Risers

Dimensions:	Length x Width x Depth
Inside:	48" x 48" x Varies (8" to 36")
Outside:	52" x 52" x Varies (8" to 36")

- 🔊 4000 psi concrete mix with Fiber Mesh added for reinforcement
- 🔊 Rebar supports for lifting and penetrations
- 🔊 Available in 8" through 36" to hit exact elevation requirement
- 🔊 Ramneck sealant provided to prevent infiltration

Company

A & L Vault

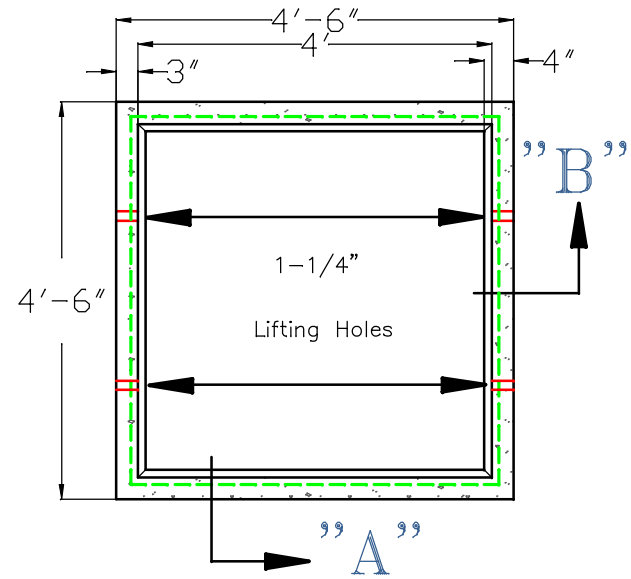
P.O. Box 815
111 E.Pryor St.
Athens, AL, 35612

(256) 232-2100
Scale N.T.S.

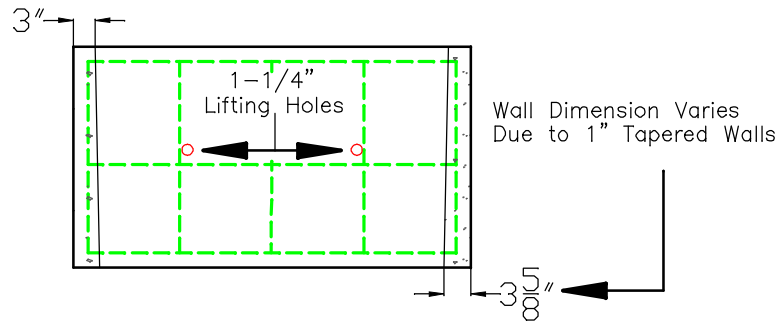
A&L-4848RIS

VAULT CONSTRUCTION FEATURES

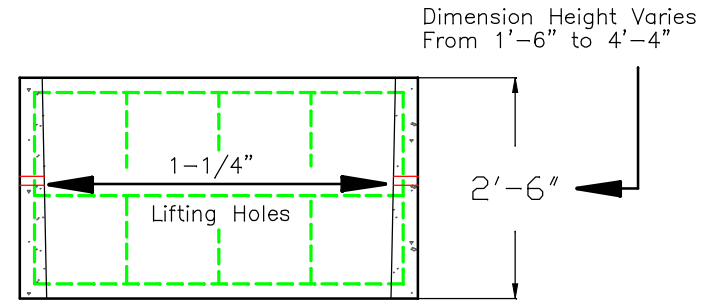
- 4,000 PSI Fiberglass Reinforced Concrete Mix
- #3 or # 5 Rebar or As Specified
- 1-1/4" Lifting Holes
- Pipe Penetrations Sealed with Waterproofing



TOP VIEW



SIDE VIEW "A"



SIDE VIEW "B"

Please note that the dimensions are typical due to variations during the curing may have minute changes

A&L-4848RIS

A&L 4848SP

4848 Concrete Vault – “Shallow Pattern”

Dimensions:	Length x Width x Depth
Inside:	48” x 48” x (Varies 15” to 48”)
Outside:	52” x 52” x (Varies 15” to 52”)

- 👂 4000 psi concrete mix with Fiber Mesh added for reinforcement
- 👂 Rebar supports for lifting and penetrations
- 👂 Four steel lifting hooks imbedded in floor
- 👂 4” Drain cast into floor
- 👂 Pipe penetrations are sleeved and grouted to maintain structural integrity and can be located per customer’s request at no charge.
- 👂 Option to pour on a slope to match existing terrain.

Company

A & L Vault

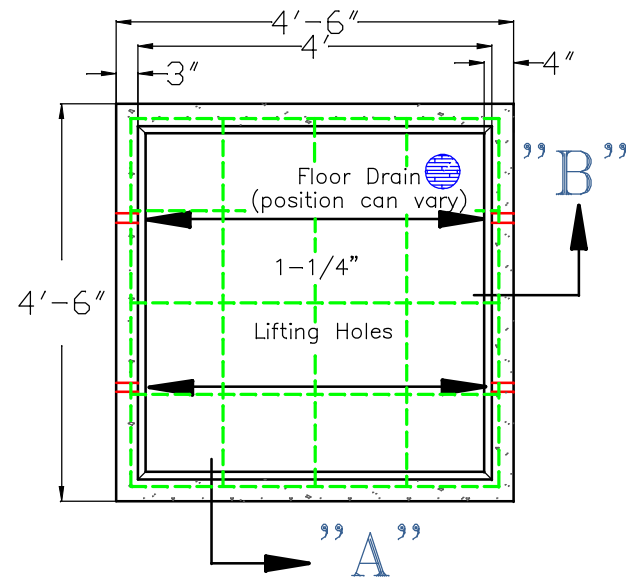
P.O. Box 815
111 E.Pryor St.
Athens, AL, 35612

(256) 232-2100
Scale N.T.S.

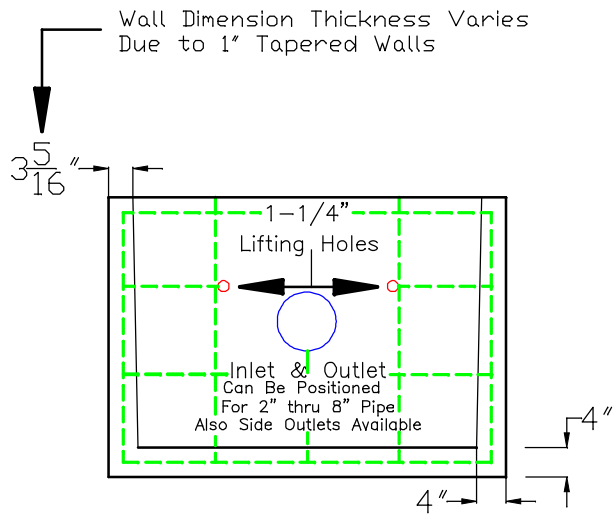
A&L-4848CV

VAULT CONSTRUCTION FEATURES

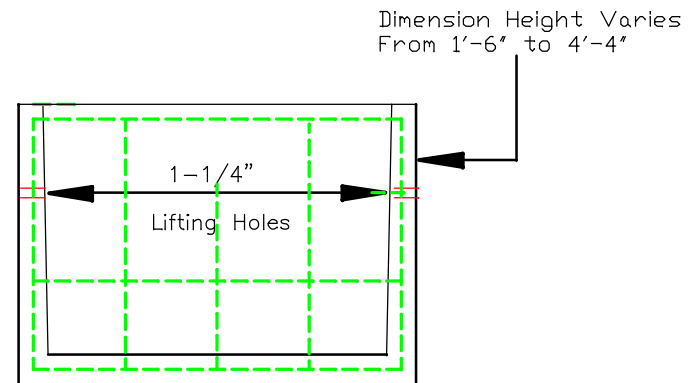
- 4,000 PSI Fiberglass Reinforced Concrete Mix
- #3 or # 5 Rebar or As Specified
- 1-1/4" Lifting Holes
- Pipe Penetrations Sealed with Waterproofing



TOP VIEW



SIDE VIEW "A"



SIDE VIEW "B"

Please note that the dimensions are typical due to variations during the curing may have minute changes

A&L-4848SP

A&L-6234ALM

6234 Aluminum Lid – Foot Traffic Rated

- 🔑 1/4" Aluminum checker plate with stainless steel thumb latch cab lock for inside escape and T handle keyed for outside entry.
- 🔑 For additional security, the access door can be equipped with a staple for padlock as an option.
- 🔑 Single leaf
- 🔑 Full length aluminum piano hinges
- 🔑 Four tabs on inside to allow anchoring to sidewall to prevent theft
- 🔑 Water raceway inside attached to 1" drain to route to floor drain
- 🔑 Gas shocks applied to compensate for weight of door
- 🔑 Kickstand to prevent accidental closure

Company

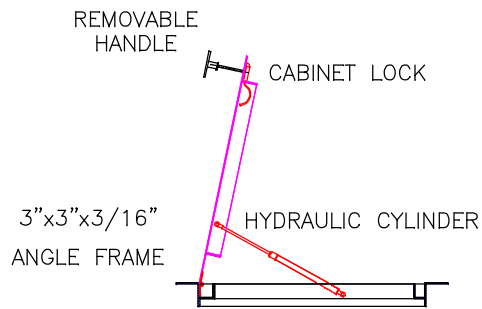
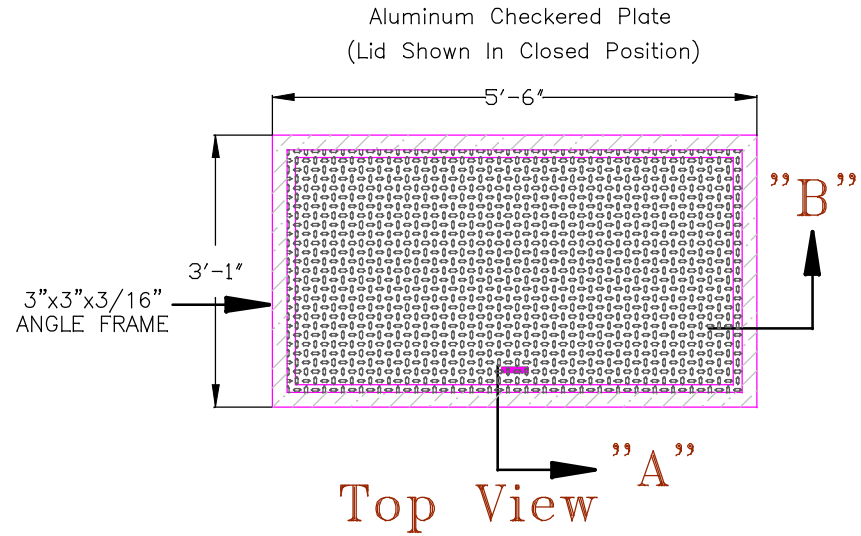
A & L Vault

P.O. Box 815
111 E.Pryor St.
Athens Al. 35612

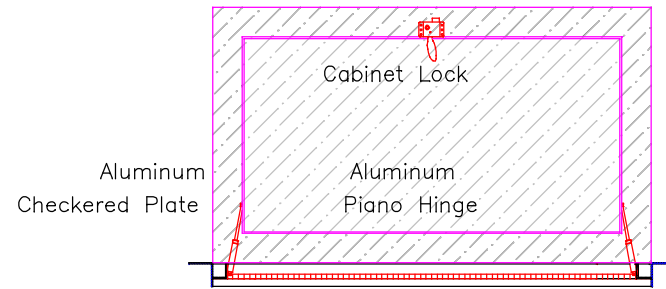
(256) 232-2100
Scale 1/4" = 1"

ALUMINUM HYDRAULIC LID LID CONSTRUCTION FEATURES

- 1/4" Aluminum Checkered Plate
- 3"x3"x3/16" Aluminum Angle Frame
- 120 Force Lbs Hydraulic Cylinder
- 2"x2"x1/8" Water Channel with 1" Drain
- Stainless Steel Cabinet Lock
- Removeable T-Handle for Security
- Full Length Piano Hinge



Side View A



Front View B

A&L-6234ALM

A&L-6234ALM

A&L-6234CV

6234 Concrete Vault – Standard

Dimensions: Length x Width x Depth

Inside: 62" x 34" x 29"

Outside: 66" x 38" x 32"

- 🔑 4000 psi concrete mix with Fiber Mesh added for reinforcement
- 🔑 Rebar supports for lifting and penetrations
- 🔑 Four steel lifting hooks imbedded in floor
- 🔑 Vault walls taper from top to bottom; inside dimensions are less at bottom
- 🔑 4" Drain cast into floor, a sump hole is available as an option instead of 4" drain
- 🔑 Pipe penetrations are sleeved and grouted to maintain structural integrity and can be located per customer's request at no charge
- 🔑 Option to pour on a slope to match existing terrain
- 🔑 Risers and dog house notched available
- 🔑 Vaults available with or without a bottom

A & L Vault Company

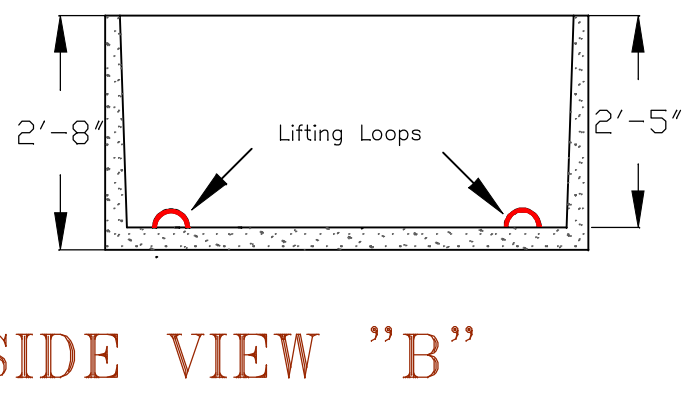
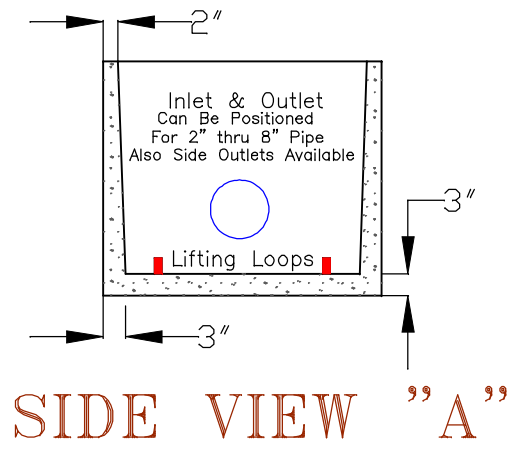
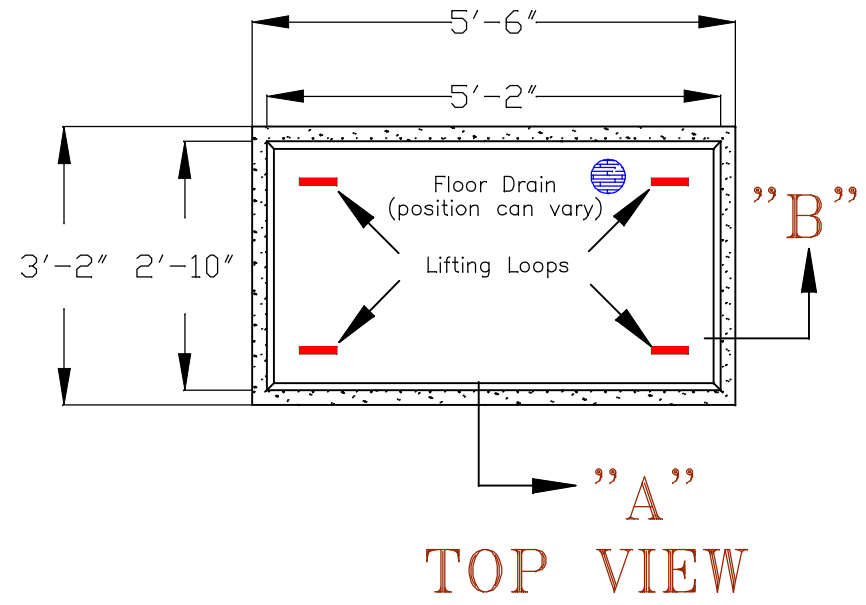
P.O. Box 815
111 E. Pryor St.
Athens AL 35612

(256) 232-2100
Scale 1/4" = 1"

A&L-6234CV

VAULT CONSTRUCTION FEATURES

- 4,000 PSI Fiberglass Reinforced Concrete Mix
- #3 or # 5 Rebar or As Specified
- 1-1/4" Lifting Holes
- Pipe Penetrations Sealed with Waterproofing



Please note that the dimensions are typical due to variations during the curing may have minute changes

A&L-6234CV

A&L-6234DHN

6234 Concrete Vault – Dog House Notched – No Bottom

Dimensions: Length x Width x Depth

 Inside: 62" x 34" x 29"

 Outside: 66" x 38" x 29"

- 🔑 4000 psi concrete mix with Fiber Mesh added for reinforcement
- 🔑 Rebar supports for lifting and penetrations
- 🔑 Option to pour on a slope to match existing terrain
- 🔑 Notched out per customer requirement for depth and size to drop over existing line

A & L Vault Company

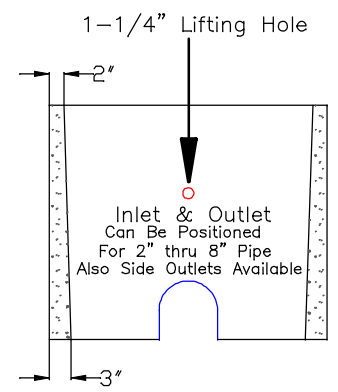
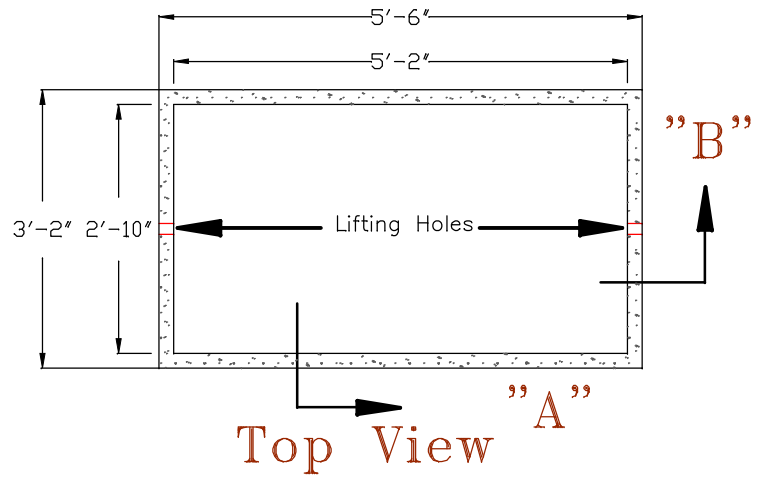
P.O. Box 815
111 E. Pryor St.
Athens Al. 35612

(256) 232-2100
Scale 1/4" = 1"

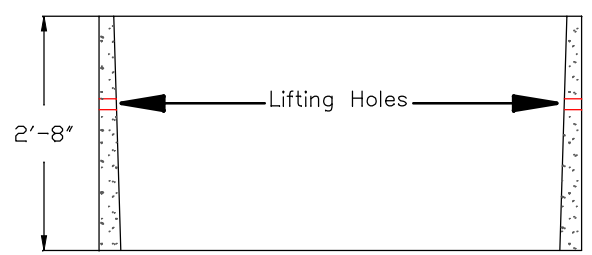
A&L-6234DHN

VAULT CONSTRUCTION FEATURES

- 4,000 PSI Fiberglass Reinforced Concrete Mix
- #3 or # 5 Rebar or As Specified
- 1-1/4" Lifting Holes
- Pipe Penetrations Sealed with Waterproofing



Side View A



Front View B

Please note that the dimensions are typical due to variations during the curing may have minute changes

A&L-6234DHN

A&L-6234RIS

6234 Concrete Vault – Risers

Dimensions: Length x Width x Depth
 Inside: 62" x 34" x Varies (16" to 29")
 Outside: 66" x 38" x Varies (16" to 29")

- 🔑 4000 psi concrete mix with Fiber Mesh added for reinforcement
- 🔑 Rebar supports for lifting and penetrations
- 🔑 Available in 16" through 29" to hit exact elevation requirement
- 🔑 Ramneck sealant provided to prevent infiltration

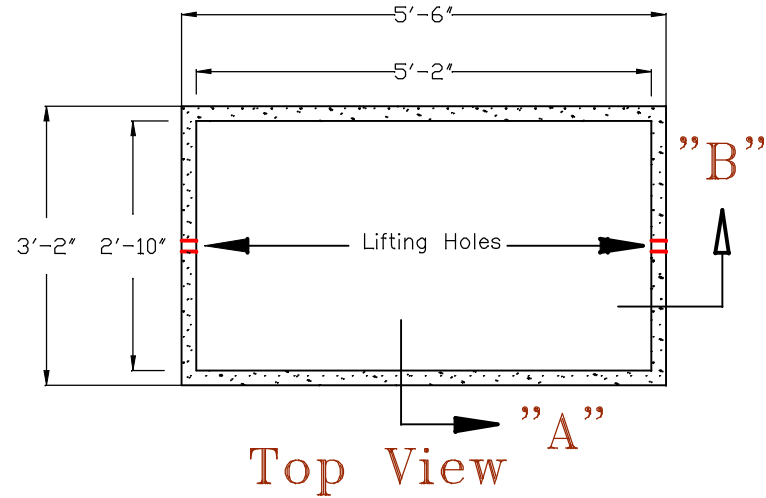
A & L Vault Company

P.O. Box 815
111 E.Pryor St,
Athens Al. 35612

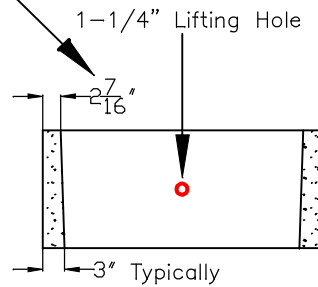
(256) 232-2100
Scale 1/4" = 1"

VAULT CONSTRUCTION FEATURES

- 4,000 PSI Fiberglass Reinforced Concrete Mix
- #3 or # 5 Rebar or As Specified
- 1-1/4" Lifting Holes
- Pipe Penetrations Sealed with Waterproofing

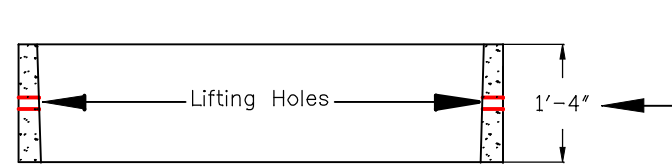


Wall Dimension Thickness Varies
Due to 1" Tapered Walls



Side View A

Dimension Height Varies
From 1'-4" to 2'-5"



Front View B

Please note that the dimensions are typical due to variations during the curing may have minute changes

A&L-6234RIS

A&L-6234RIS

A&L-6234SP

6234 Concrete Vault – “Shallow Pattern”

Dimensions: Length x Width x Depth
 Inside: 62” x 34” x Varies (16” to 29”)
 Outside: 66” x 38” x Varies (16” to 32”)

- 🔑 4000 psi concrete mix with Fiber Mesh added for reinforcement
- 🔑 Rebar supports for lifting and penetrations
- 🔑 Four steel lifting hooks imbedded in floor
- 🔑 4” Drain cast into floor, a sump hole is available as an option instead of 4” drain
- 🔑 Pipe penetrations are sleeved and grouted to maintain structural integrity and can be located per customer’s request at no charge
- 🔑 Option to pour on a slope to match existing terrain

Company

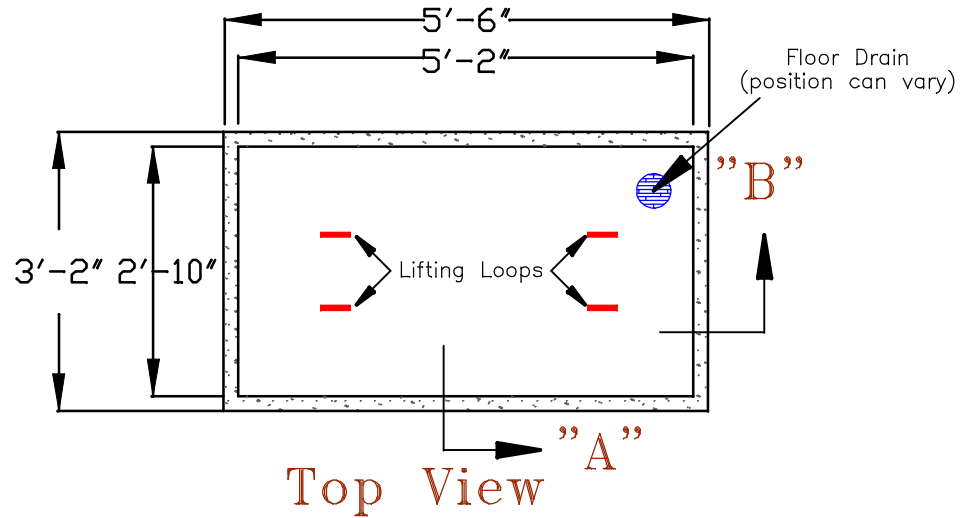
A & L Vault

P.O. Box 815
111 E. Pryor St.
Athens AL 35612

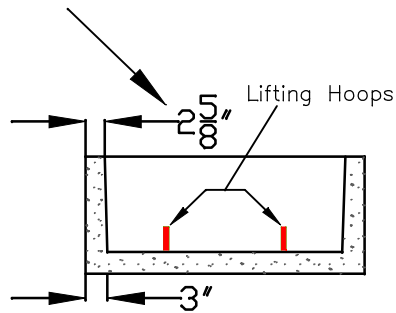
(256) 232-2100
Scale 1/4" = 1"

VAULT CONSTRUCTION FEATURES

- 4,000 PSI Fiberglass Reinforced Concrete Mix
- #3 or # 5 Rebar or As Specified
- 1-1/4" Lifting Holes
- Pipe Penetrations Sealed with Waterproofing

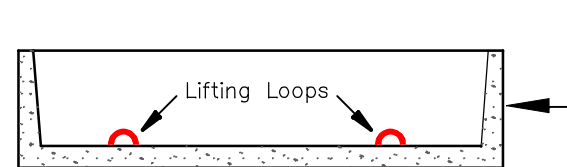


Wall Dimension Thickness Varies
Due to 1" Tapered Walls



Side View A

Dimension Height Varies
From 1'-4" to 2'-5"



Front View B

Please note that the dimensions are typical due to variations during the curing may have minute changes

A&L-6234SP

A&L-6234SP

A&L-8434ALM

8434 Vault Lid – Foot Traffic Rated

- 🔑 1/4" Aluminum checker plate with stainless steel thumb latch cab lock for inside escape and T handle keyed for outside entry.
- 🔑 For additional security, the access door can be equipped with a staple for padlock as an option.
- 🔑 Single leaf
- 🔑 Full length aluminum piano hinges
- 🔑 Four tabs on inside to allow anchoring to sidewall to prevent theft
- 🔑 Water raceway inside attached to 1" drain to route to floor drain
- 🔑 Gas shocks applied to compensate for weight of door
- 🔑 Kickstand to prevent accidental closure

A & L Vault Company

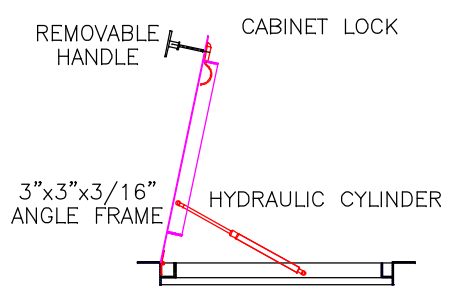
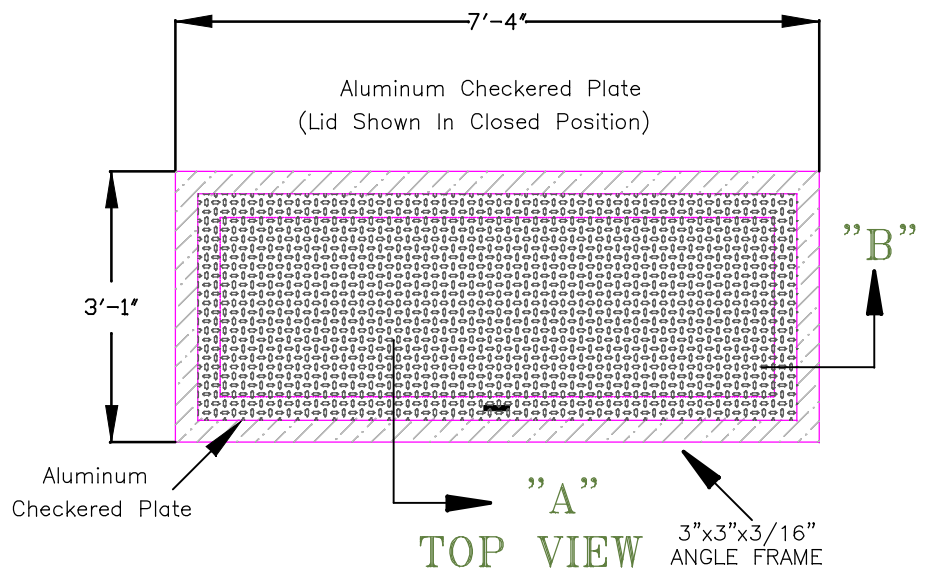
P.O. Box 815
111 E. Pryor St.
Athens Al. 35612

(256) 232-2100
Scale 1/4" = 1"

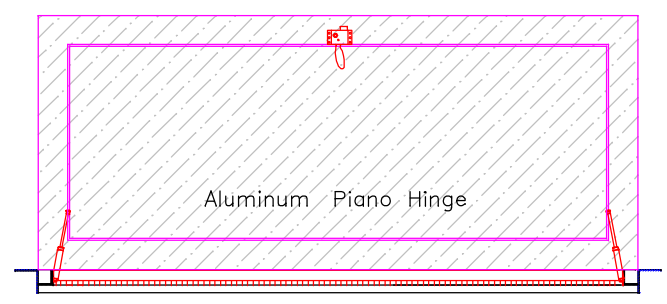
A&L- 8434ALM

ALUMINUM HYDRAULIC LID CONSTRUCTION FEATURES

- 1/4" Aluminum Checkered Plate
- 3"x3"x3/16" Aluminum Angle Frame
- 120 Force Lbs Hydraulic Cylinder
- 2"x2"x1/8" Water Channel with 1" Drain
- Stainless Steel Cabinet Lock
- Removeable T-Handle for Security
- Full Length Piano Hinge



SIDE VIEW "A"



FRONT VIEW "B"

A&L-8434ALM

A&L-8434CV

8434 Concrete Vault – Standard

Dimensions: Length x Width x Depth

Inside: 84" x 34" x 29"

Outside: 88" x 38" x 32"

- 🔑 4000 psi concrete mix with Fiber Mesh added for reinforcement
- 🔑 Rebar supports for lifting and penetrations
- 🔑 Four steel lifting hooks imbedded in floor
- 🔑 Vault walls taper from top to bottom; inside dimensions are less at bottom
- 🔑 4" Drain cast into floor, a sump hole is available as an option instead of 4" drain
- 🔑 Pipe penetrations are sleeved and grouted to maintain structural integrity and can be located per customer's request at no charge
- 🔑 Option to pour on a slope to match existing terrain
- 🔑 Risers and dog house notched available
- 🔑 Vaults available with or without a bottom

Company

A & L Vault

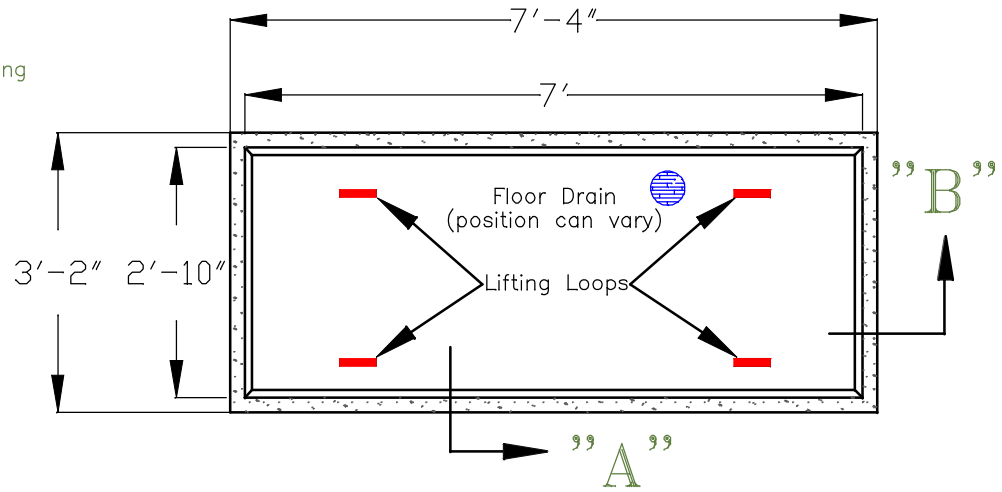
P.O. Box 815
111 E.Pryor St.
Athens Al. 35612

(256) 232-2100
Scale 1/4" = 1"

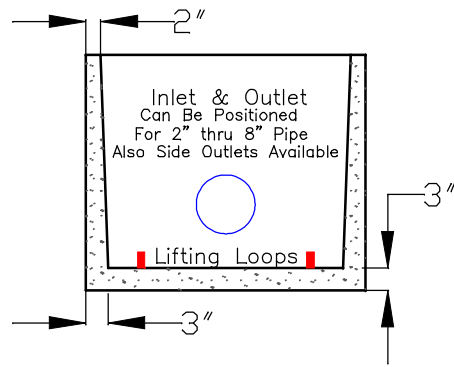
A&L-8434CV

VAULT CONSTRUCTION FEATURES

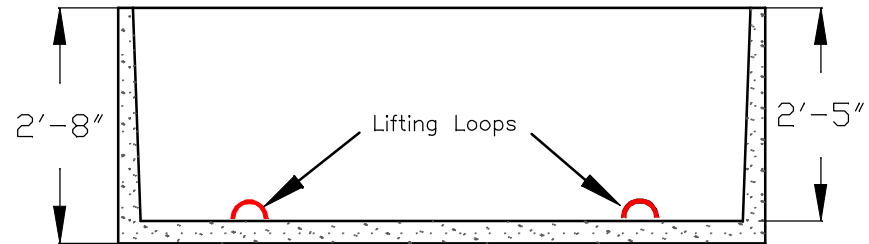
- 4,000 PSI Fiberglass Reinforced Concrete Mix
- #3 or # 5 Rebar or As Specified
- 1-1/4" Lifting Holes
- Pipe Penetrations Sealed with Waterproofing



TOP VIEW



SIDE VIEW "A"



SIDE VIEW "B"

Please note that the dimensions are typical due to variations during the curing may have minute changes

A&L-8434CV

A&L-8434DHN

8434 Concrete Vault – Dog House Notched – No Bottom

Dimensions: Length x Width x Depth

 Inside: 84" x 34" x 29"

 Outside: 88" x 38" x 29"

- 🔑 4000 psi concrete mix with Fiber Mesh added for reinforcement
- 🔑 Rebar supports for lifting and penetrations
- 🔑 Option to pour on a slope to match existing terrain
- 🔑 Notched out per customer requirement for depth and size to drop over existing line

Company

A & L Vault

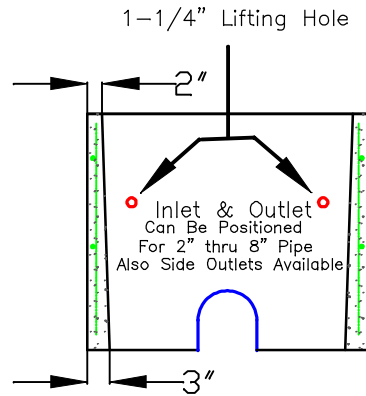
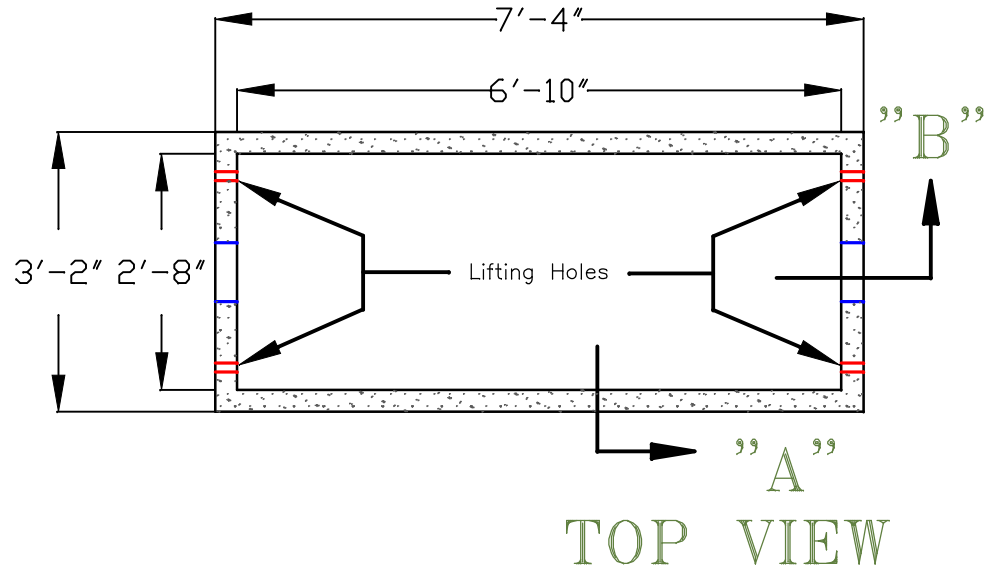
P.O. Box 815
111 E.Pryor St.
Athens Al. 35612

(256) 232-2100
Scale 1/4" = 1"

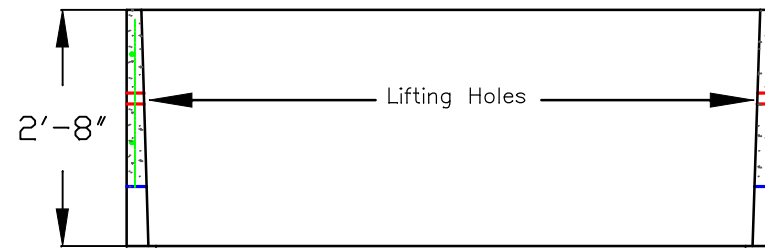
A&L-8434DHN

VAULT CONSTRUCTION FEATURES

- 4,000 PSI Fiberglass Reinforced Concrete Mix
- #3 or # 5 Rebar or As Specified
- 1-1/4" Lifting Holes
- Pipe Penetrations Sealed with Waterproofing



SIDE VIEW "A"



SIDE VIEW "B"

Please note that the dimensions are typical due to variations during the curing may have minute changes

A&L-8434DHN

A&L-8434RIS

8434 Concrete Vault – Risers

Dimensions: Length x Width x Depth
 Inside: 84" x 34" x Varies (16" to 29")
 Outside: 88" x 38" x Varies (16" to 29")

- 🔑 4000 psi concrete mix with Fiber Mesh added for reinforcement
- 🔑 Rebar supports for lifting and penetrations
- 🔑 Pipe penetrations are sleeved and grouted to maintain structural integrity and can be located per customer's request at no charge
- 🔑 Available in 16" through 29" to hit exact elevation requirement
- 🔑 Ramneck sealant provided to prevent infiltration

Company

A & L Vault

P.O. Box 815
111 E.Pryor St.
Athens AL 35612

Scale 1/4" = 1"

(256) 232-2100

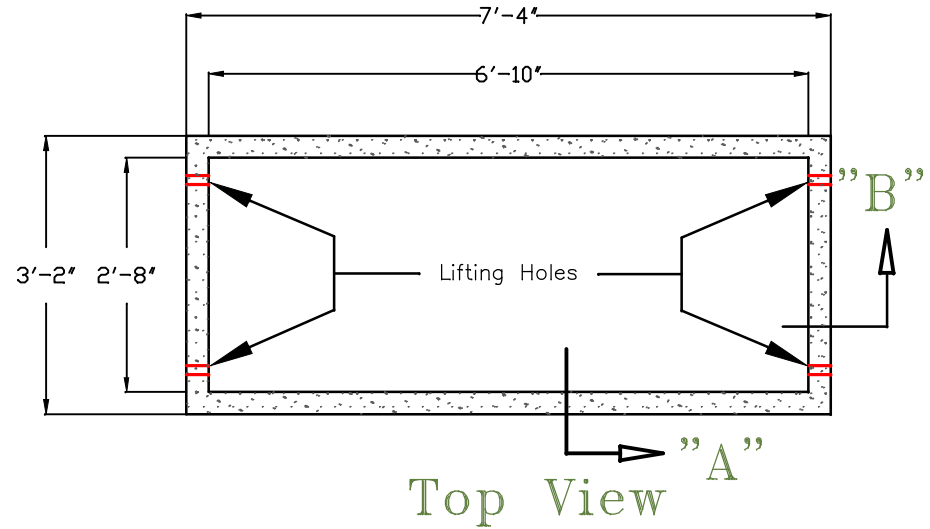
VAULT CONSTRUCTION FEATURES

4,000 PSI Fiberglass Reinforced Concrete Mix

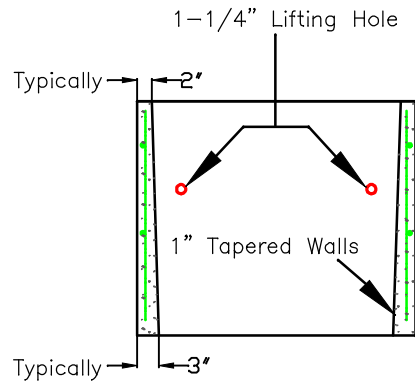
#3 or # 5 Rebar or As Specified

1-1/4" Lifting Holes

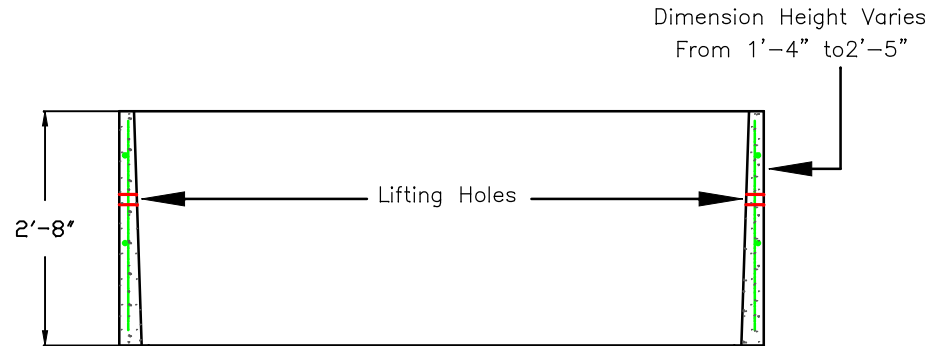
Pipe Penetrations Sealed with Waterproofing



Top View



Side View A



Front View B

Please note that the dimensions are typical due to variations during the curing may have minute changes

A&L-8434RIS

A&L-8434RIS

A&L-8434SP

8434 Concrete Vault – “Shallow Pattern”

Dimensions: Length x Width x Depth
 Inside: 84” x 34” x Varies (16” to 29”)
 Outside: 88” x 38” x Varies (16” to 32”)

- 🔑 4000 psi concrete mix with Fiber Mesh added for reinforcement
- 🔑 Rebar supports for lifting and penetrations
- 🔑 Four steel lifting hooks imbedded in floor
- 🔑 4” Drain cast into floor, a sump hole is available as an option instead of 4” drain
- 🔑 Pipe penetrations are sleeved and grouted to maintain structural integrity and can be located per customer’s request at no charge
- 🔑 Option to pour on a slope to match existing terrain

A&L-8434SP

Company

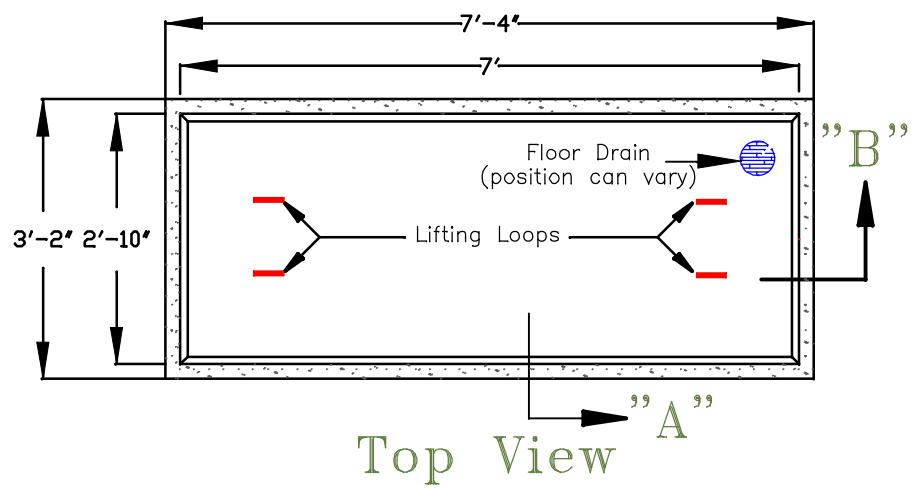
A & L Vault

P.O. Box 815
111 E.Pryor St.
Athens AL 35612

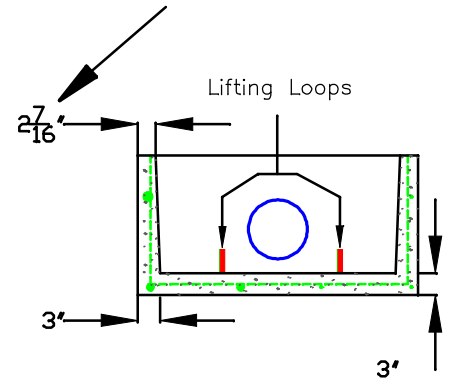
Scale 1/4" = 1"
(256) 232-2100

VAULT CONSTRUCTION FEATURES

- 4,000 PSI Fiberglass Reinforced Concrete Mix
- #3 or # 5 Rebar or As Specified
- 1-1/4" Lifting Holes
- Pipe Penetrations Sealed with Waterproofing

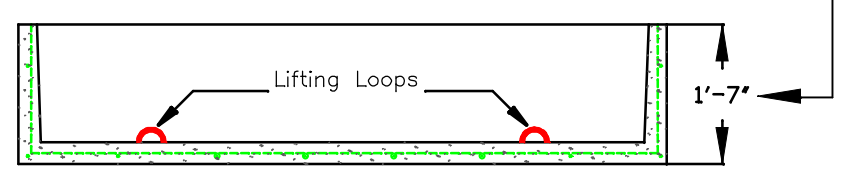


Wall Dimension Thickness Varies
Due to 1" Tapered Walls



Side View A

Dimension Height Varies
From 1'-4" to 2'-5"



Front View B

Please note that the dimensions are typical due to variations during the curing may have minute changes

A&L-8434SP

A&L-7248ALM

7248 Aluminum Lid – Foot Traffic Rated

- 🔑 1/4" Aluminum checker plate with stainless steel thumb latch cab lock for inside escape and T handle keyed for outside entry.
- 🔑 For additional security, the access door can be equipped with a staple for padlock as an option.
- 🔑 Double leaf
- 🔑 Full length aluminum piano hinges
- 🔑 Four tabs on inside to allow anchoring to sidewall to prevent theft
- 🔑 Water raceway inside attached to 1" drain to route to floor drain
- 🔑 Gas shocks applied to compensate for weight of door
- 🔑 Kickstand to prevent accidental closure

Company

A & L Vault

P.O. Box 815
111 E.Pryor St.
Athens Al. 35612

(256) 232-2100
Scale 1/4" = 1"

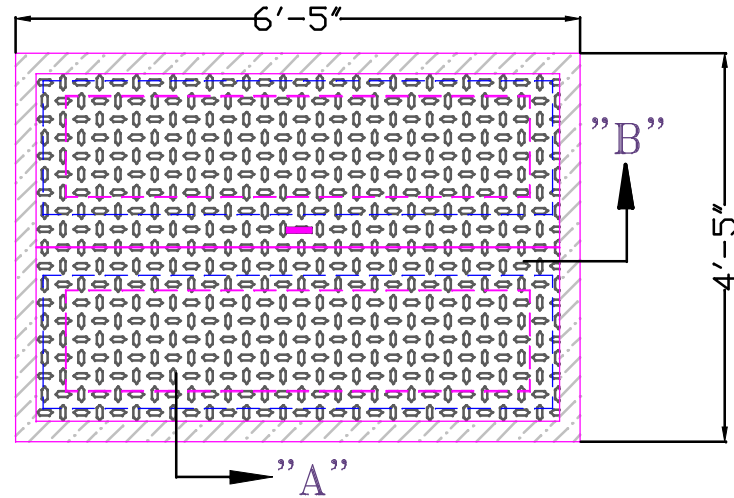
A&L-7248ALM

ALUMINUM HYDRAULIC LID LID CONSTRUCTION FEATURES

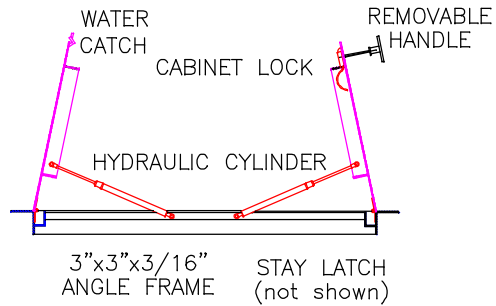
- 1/4" Aluminum Checlered Plate
- 3"x3"x3/16" Aluminum Angle Frame
- 120 Force lbs Hydraulic Cylinder
- 2"x2"x1/8" Water Channel with 1" Drain
- Stainless Steel Cabinet Lock
- Removeable T-Handle for Security
- Full Length Piano Hinge

3"x3"x3/16"
ANGLE FRAME

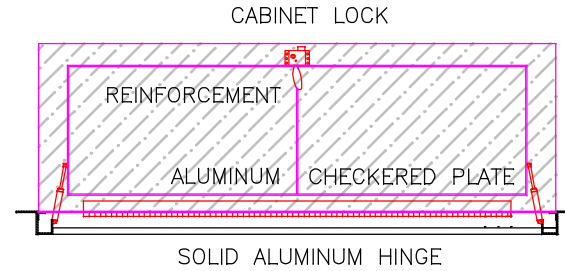
ALUMINUM
CHECKERED PLATE
(LID SHOWN IN CLOSED POSITION)



TOP VIEW



SIDE VIEW "A"





FRONT VIEW "B"

A&L-7248ALM

A&L-7248SLAB4

7248-4 Concrete Lid with aluminum lid cast into 3-5/8" Concrete Slab

Dimensions: Length x Width x Depth
 Outside: 78" x 54" x 3-5/8"

 A&L-3636ALM Aluminum checker plate lid cast into 3-5/8" concrete slab
 Foot traffic rated only

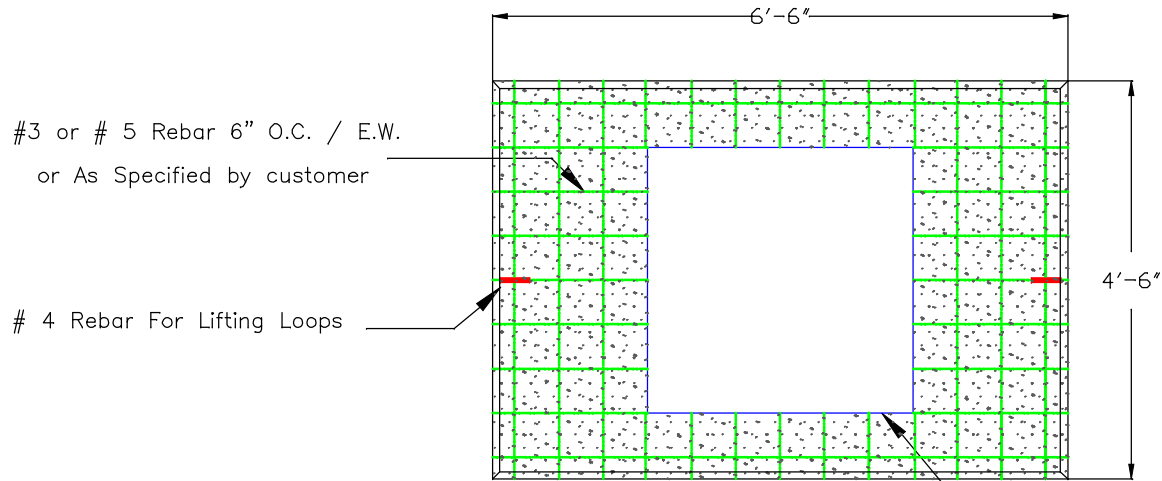
A & L Vault
Company

P.O. Box 815
111 E.Pryor St,
Athens Al. 35612

(256) 232-2100
Scale 1/2" = 1"

SLAB CONSTRUCTION FEATURES

- 4,000 PSI Fiberglass Reinforced Concrete Mix
- #3 or # 5 Rebar or As Specified
- 1-1/4" Lifting Holes
- Pipe Penetrations Sealed with Waterproofing



TOP VIEW



SIDE VIEW

Please note that the dimensions are typical due to variations during the curing may have minute changes

A&L-7248SLAB4

A&L-7248SLAB4

A&L-7248CV4

7248 - 4 Concrete Vault - Standard

Dimensions: Length x Width x Depth

Inside: 72" x 48" x 48"

Outside: 78" x 54" x 52"

- 🔑 4000 psi concrete mix with Fiber Mesh added for reinforcement
- 🔑 Solid steel rebar cage with bottom and sides reinforced with 5/8" rebar (or customer spec) on 6", 8", or 12" centers as required
- 🔑 Vault walls taper from top to bottom; inside dimensions are less at bottom
- 🔑 4" Drain cast into floor, a sump hole is available as an option instead of 4" drain
- 🔑 1-1/4" steel lifting pipes cast horizontally into concrete on 4 corners and welded to rebar cage
- 🔑 Pipe penetrations are sleeved and grouted to maintain structural integrity and can be located per customer's request at no charge
- 🔑 Option to pour on a slope to match existing terrain
- 🔑 Risers and dog house notched available
- 🔑 Vaults available with or without a bottom see Risers and Dog House Vaults

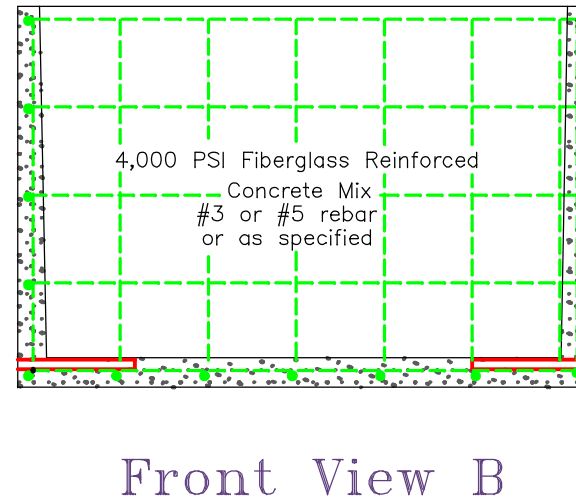
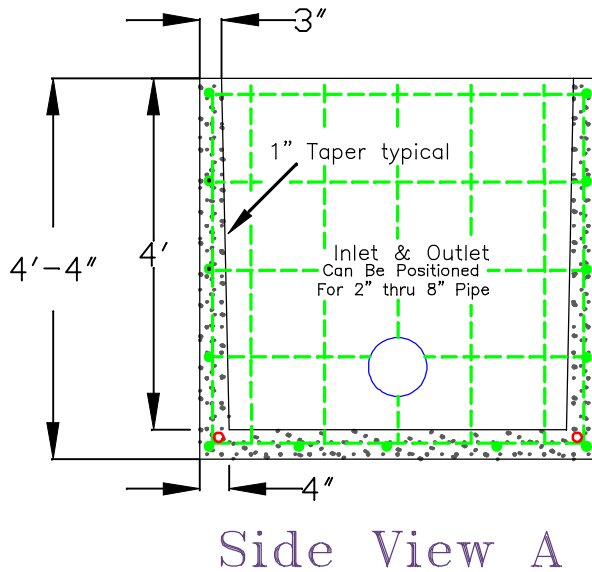
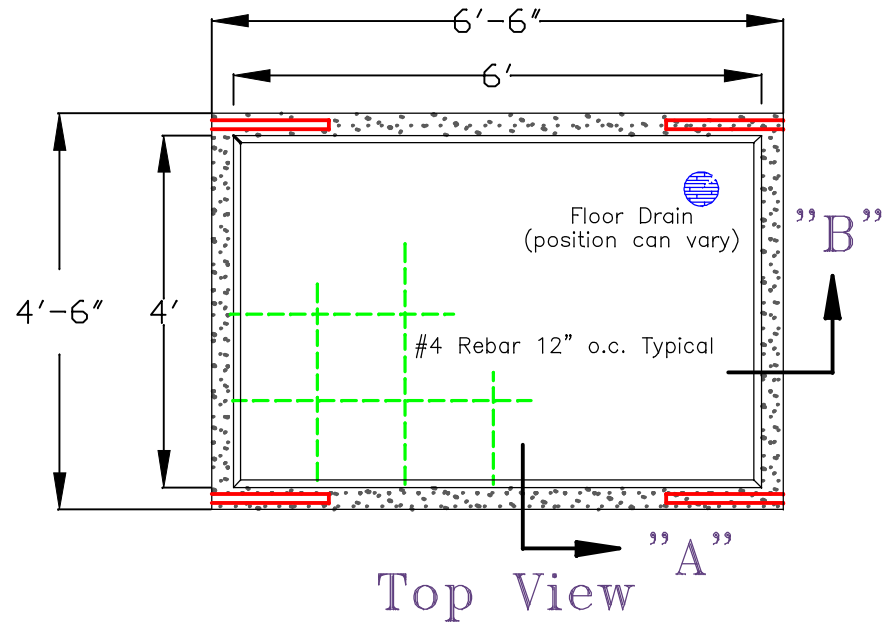
A & L Vault Company

P.O. Box 815
111 E.Pryor St.
Athens AL 35612

(256) 232-2100
Scale 1/4" = 1"

VAULT CONSTRUCTION FEATURES

- 4,000 PSI Fiberglass Reinforced Concrete Mix
- #3 or # 5 Rebar or As Specified
- 1-1/4" Lifting Holes
- Pipe Penetrations Sealed with Waterproofing



Please note that the dimensions are typical due to variations during the curing may have minute changes

A&L-7248CV4

A&L-7248CV4

A&L-7248DHN4

7248-4 Concrete Vault- Dog House Notched – No Bottom

Dimensions: Length x Width x Depth

Inside: 72" x 48" x 48"

Outside: 78" x 54" x 48"

- 🔑 4000 psi concrete mix with Fiber Mesh added for reinforcement
- 🔑 Solid steel rebar cage with bottom and sides reinforced with 5/8" rebar (or customer spec) on 6", 8", or 12" centers as required
- 🔑 Option to pour on a slope to match existing terrain
- 🔑 Notched out per customer requirement for depth and size to drop over existing line

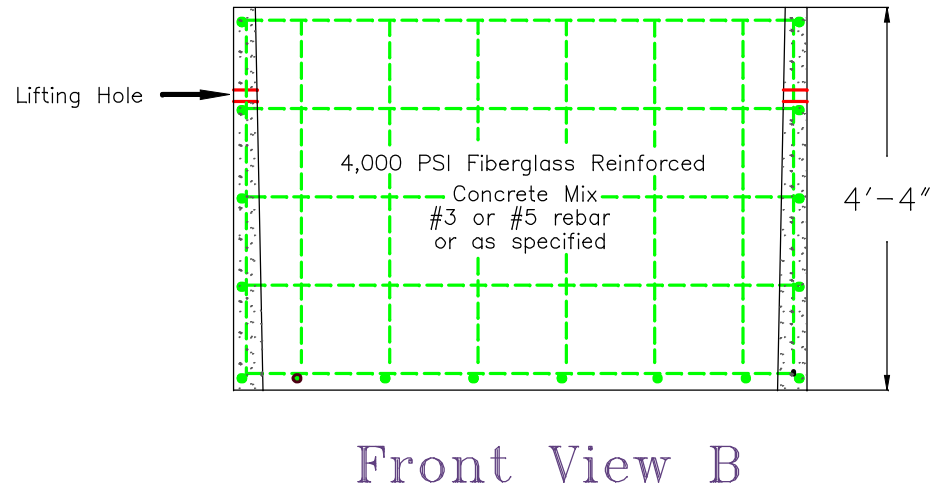
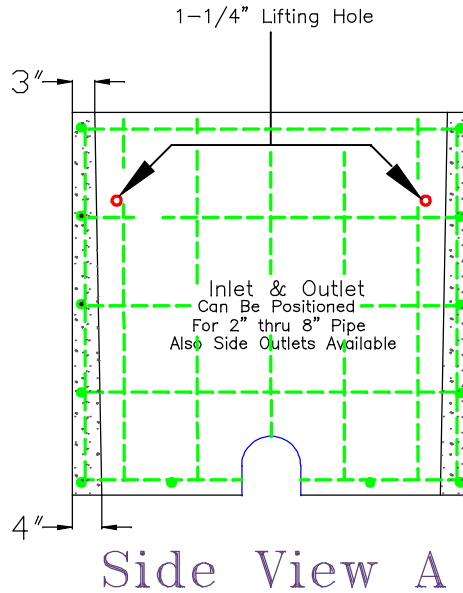
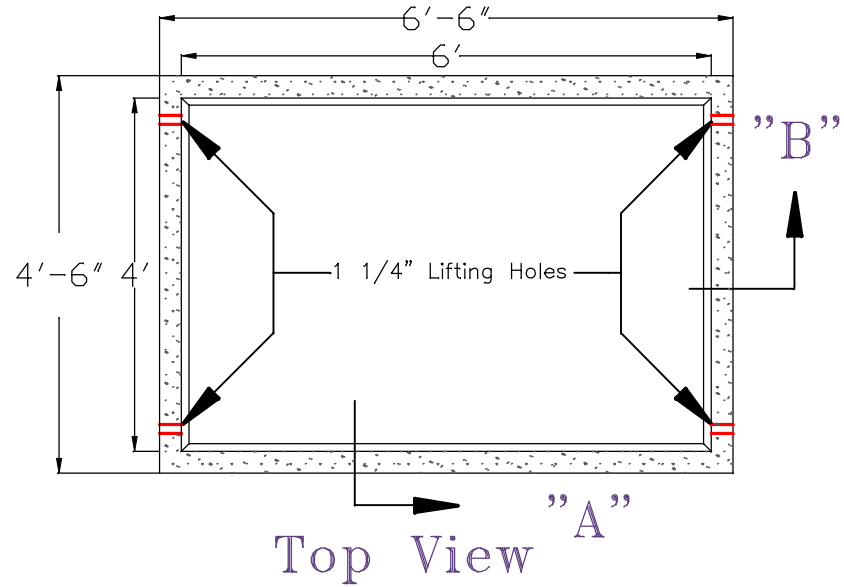
A & L Vault
Company

P.O. Box 815
111 E.Pryor St.
Athens AL 35612

(256) 232-2100
Scale 1/4" = 1"

VAULT CONSTRUCTION FEATURES

- 4,000 PSI Fiberglass Reinforced Concrete Mix
- #3 or #5 Rebar or As Specified
- 1-1/4" Lifting Holes
- Pipe Penetrations Sealed with Waterproofing



Please note that the dimensions are typical due to variations during the curing may have minute changes

A&L-7248DHN4

A&L-7248DHN4

A&L-7248RIS4

7248-4 Concrete Vault – Risers

Dimensions: Length x Width x Depth
 Inside: 72" x 48" x Varies (18" to 48")
 Outside: 78" x 54" x Varies (18" to 48")

- 🔑 4000 psi concrete mix with Fiber Mesh added for reinforcement
- 🔑 Solid steel rebar cage with bottom and sides reinforced with 5/8" rebar (or customer spec) on 6", 8", or 12" centers as required
- 🔑 Option to pour on a slope to match existing terrain
- 🔑 Available in 18" through 48" to hit exact elevation requirement
- 🔑 Ramneck sealant provided to prevent infiltration

Company

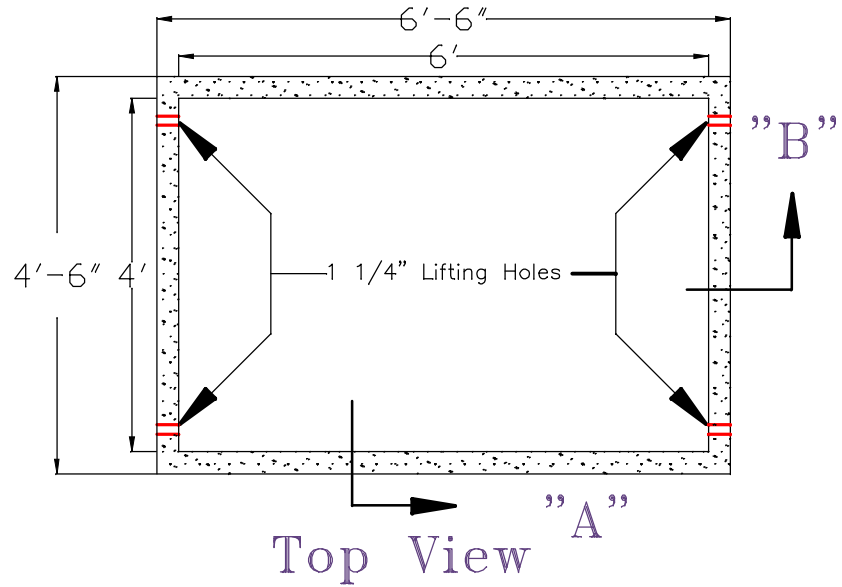
A & L Vault

P.O. Box 815
111 E.Pryor St.
Athens Al. 35612

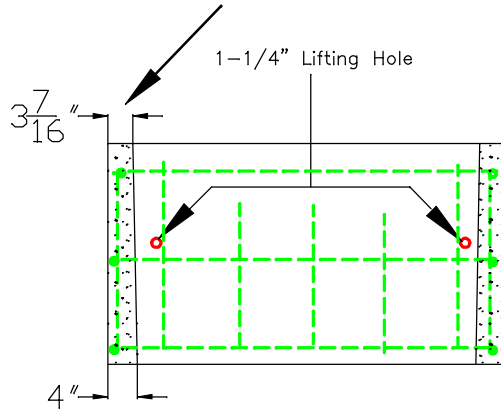
(256) 232-2100
Scale 1/4" = 1"

VAULT CONSTRUCTION FEATURES

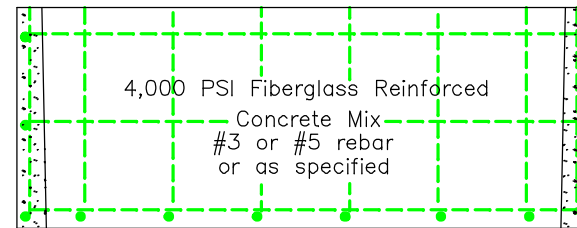
- 4,000 PSI Fiberglass Reinforced Concrete Mix
- #3 or # 5 Rebar or As Specified
- 1-1/4" Lifting Holes
- Pipe Penetrations Sealed with Waterproofing



Wall Dimension Thickness Varies
Due to 1" Tapered Walls



Dimension Height Varies
From 1'-6" to 4'-4"



Please note that the dimensions are typical due to variations during the curing may have minute changes

A&L-7248RIS

A&L-7248RIS

A&L-7248SP4

7248 – 4 Concrete Vault – “Shallow Pattern”

Dimensions: Length x Width x Depth
 Inside: 72” x 48” x Varies (18” to 48”)
 Outside: 78” x 54” x Varies (18” to 54”)

- 🔑 4000 psi concrete mix with Fiber Mesh added for reinforcement
- 🔑 Solid steel rebar cage with bottom and sides reinforced with 5/8” rebar (or customer spec) on 6”, 8”, or 12” centers as required
- 🔑 4” Drain cast into floor, a sump hole is available as an option instead of 4” drain
- 🔑 1-1/4” steel lifting pipes cast horizontally into concrete on 4 corners and welded to rebar cage
- 🔑 Pipe penetrations are sleeved and grouted to maintain structural integrity and can be located per customer’s request at no charge
- 🔑 Option to pour on a slope to match existing terrain
- 🔑 Risers and dog house notched available

A & L Vault Company

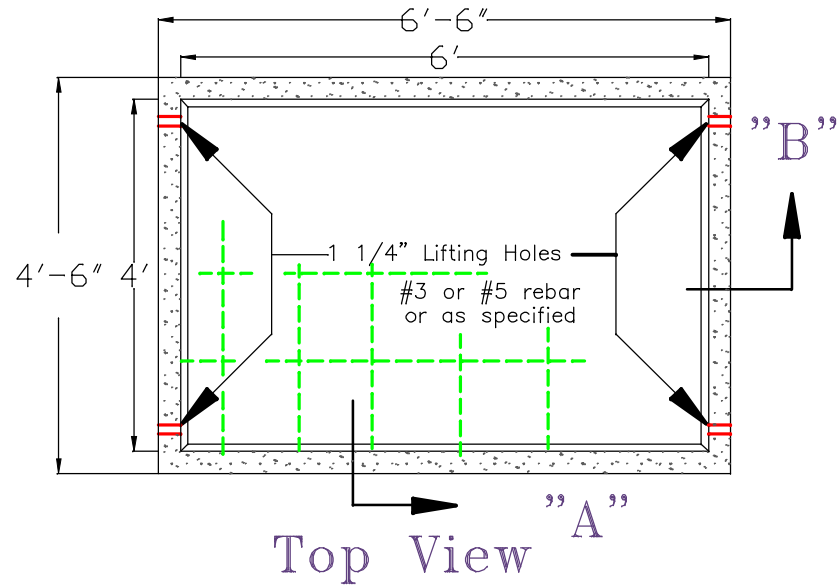
P.O. Box 815
111 E.Pryor St,
Athens Al. 35612

(256) 232-2100
Scale 1/4" = 1"

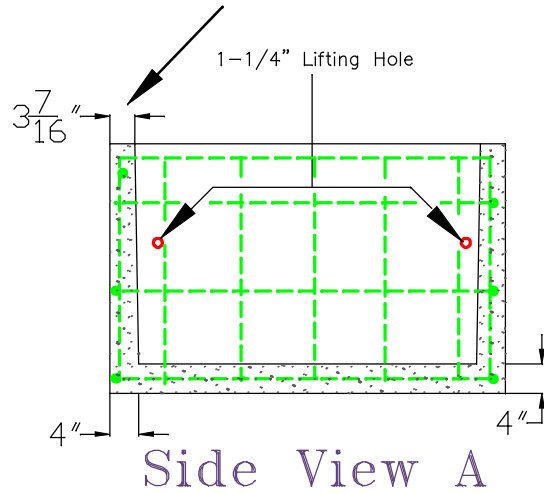
A&L-7248SP4

VAULT CONSTRUCTION FEATURES

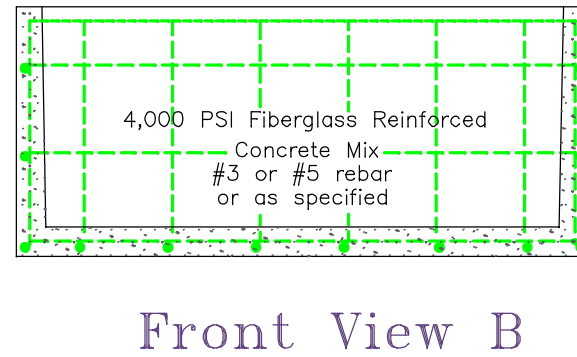
- 4,000 PSI Fiberglass Reinforced Concrete Mix
- #3 or # 5 Rebar or As Specified
- 1-1/4" Lifting Holes
- Pipe Penetrations Sealed with Waterproofing



Wall Dimension Thickness Varies
Due to 1" Tapered Walls



Dimension Height Varies
From 1'-6" to 4'-4"



Please note that the dimensions are typical due to variations during the curing may have minute changes

A&L-7248SP4

A&L-7248ALM

7248 Aluminum Lid – Foot Traffic Rated

- 🔑 1/4" Aluminum checker plate with stainless steel thumb latch cab lock for inside escape and T handle keyed for outside entry.
- 🔑 For additional security, the access door can be equipped with a staple for padlock as an option.
- 🔑 Double leaf
- 🔑 Full length aluminum piano hinges
- 🔑 Four tabs on inside to allow anchoring to sidewall to prevent theft
- 🔑 Water raceway inside attached to 1" drain to route to floor drain
- 🔑 Gas shocks applied to compensate for weight of door
- 🔑 Kickstand to prevent accidental closure

A & L Vault Company

P.O. Box 815
111 E.Pryor St.
Athens AL 35612

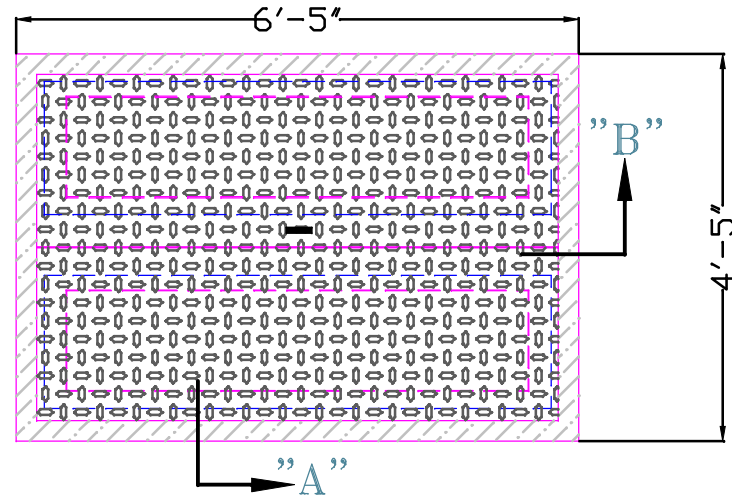
Scale 1/4" = 1"
(256) 232-2100

ALUMINUM HYDRAULIC LID LID CONSTRUCTION FEATURES

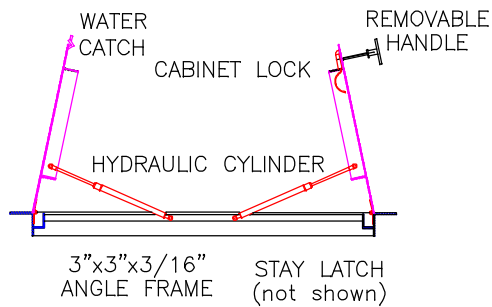
- 1/4" Aluminum Checkered Plate
- 3"x3"x3/16" Aluminum Angle Frame
- 120 Force lbs Hydraulic Cylinder
- 2"x2"x1/8" Water Channel with 1" Drain
- Stainless Steel Cabinet Lock
- Removeable T-Handle for Security
- Full Length Piano Hinge

3"x3"x3/16"
ANGLE FRAME

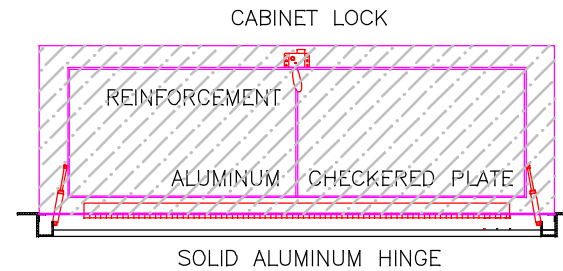
ALUMINUM
CHECKERED PLATE
(LID SHOWN IN CLOSED POSITION)



TOP VIEW



SIDE VIEW "A"



FRONT VIEW "B"



A&L-7248ALM

A&L-7248ALM

A&L-7248SLAB6

7248-6 Concrete Lid With 3636 aluminum lid cast into 3-5/8" Concrete Slab

Dimensions: Length x Width x Depth
Outside: 84" x 60" x 3-5/8"

-  A&L-3636ALM Aluminum checker plate lid cast into 3-5/8" concrete slab
-  Foot traffic rated only

Company

A & L Vault

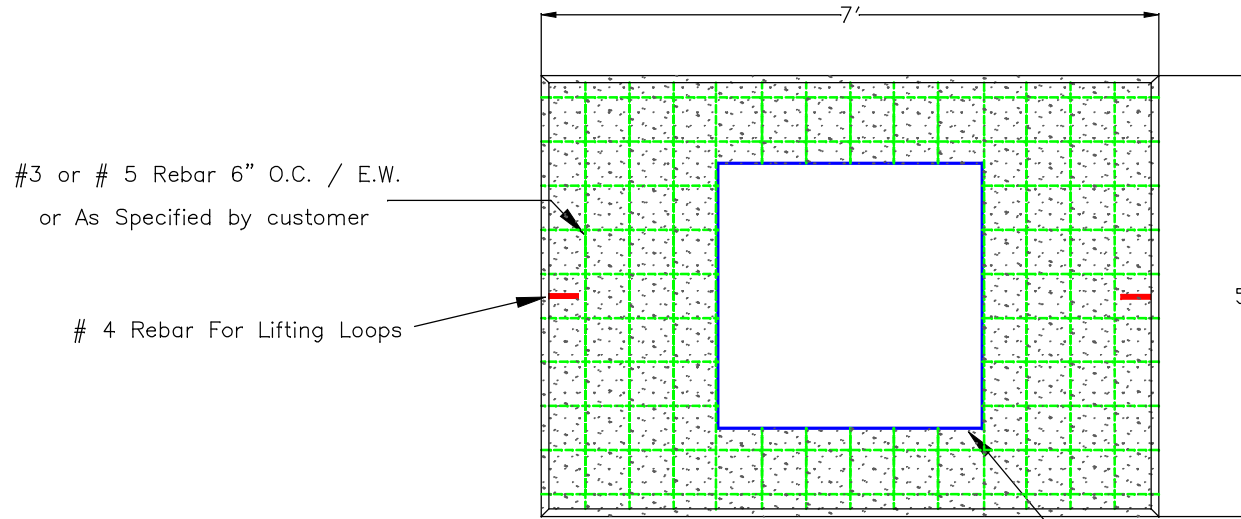
P.O. Box 815
111 E.Pryor St.
Athens Al. 35612

(256) 232-2100
Scale 1/2" = 1'

A&L-7248SLAB6

SLAB CONSTRUCTION FEATURES

- 4,000 PSI Fiberglass Reinforced Concrete Mix
- #3 or # 5 Rebar or As Specified
- 1-1/4" Lifting Holes
- Pipe Penetrations Sealed with Waterproofing



TOP VIEW



SIDE VIEW

Please note that the dimensions are typical due to variations during the curing may have minute changes

A&L-7248SLAB6

A&L-7248CV6

7248-6 Concrete Vault - Standard

Dimensions: Length x Width x Depth

Inside: 72" x 48" x 54"

Outside: 84" x 60" x 60"

- 🔑 4000 psi concrete mix with Fiber Mesh added for reinforcement
- 🔑 Solid steel rebar cage with bottom and sides reinforced with 5/8" rebar (or customer spec) on 6", 8", or 12" centers as required
- 🔑 Vault walls taper from top to bottom; inside dimensions are less at bottom
- 🔑 4" Drain cast into floor, a sump hole is available as an option instead of 4" drain
- 🔑 1-1/4" steel lifting pipes cast horizontally into concrete on 4 corners and welded to rebar cage
- 🔑 Pipe penetrations are sleeved and grouted to maintain structural integrity and can be located per customer's request at no charge
- 🔑 Option to pour on a slope to match existing terrain
- 🔑 Risers and dog house notched available
- 🔑 Vaults available with or without a bottom see Risers and Dog House Vaults

Company

A & L Vault

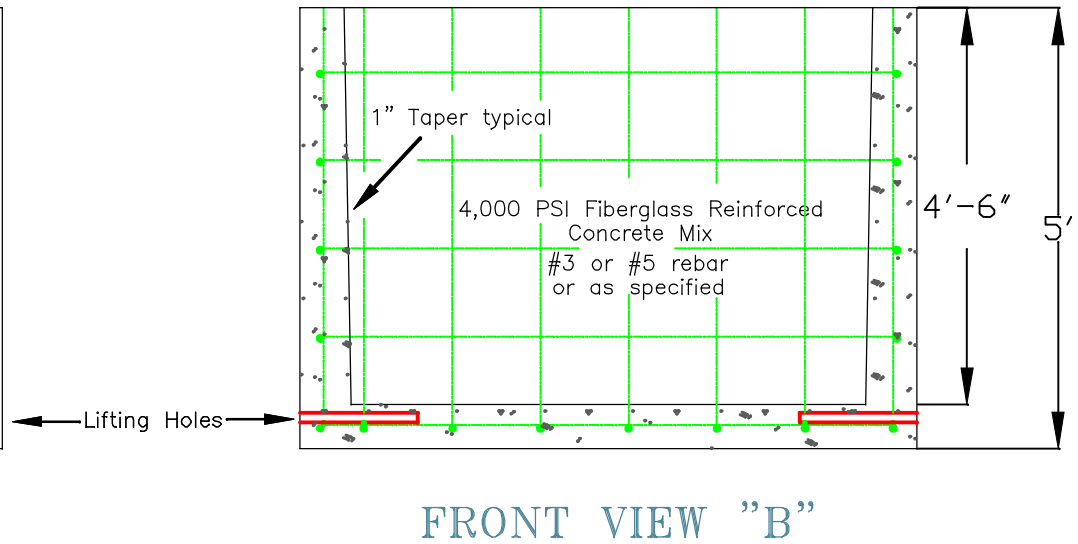
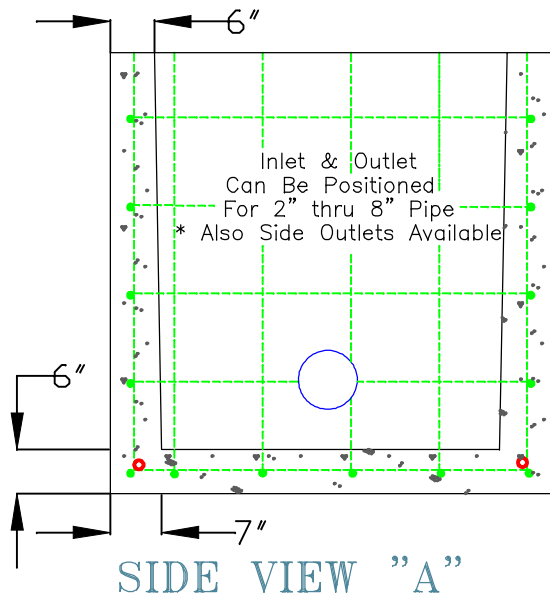
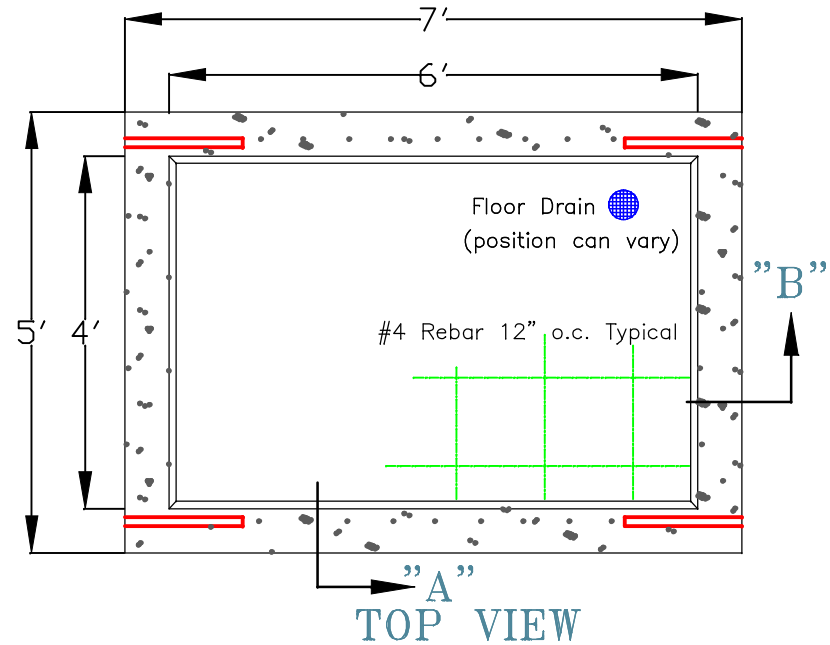
P.O. Box 815
111 E.Pryor St,
Athens Al. 35612

(256) 232-2100
Scale 1/4" = 1"

A&L-7248CV6

VAULT CONSTRUCTION FEATURES

- 4,000 PSI Fiberglass Reinforced Concrete Mix
- #3 or # 5 Rebar or As Specified
- Lifting Hooks
- Pipe Penetrations Sealed with Waterproofing



Please note that the dimensions are typical due to variations during the curing may have minute changes

A&L-7248CV6

A&L-7248DHN6

7248–6 Concrete Vault– Dog House Notched – No Bottom

Dimensions: Length x Width x Depth

 Inside: 72" x 48" x 54"

 Outside: 84" x 60" x 54"

- 🔑 4000 psi concrete mix with Fiber Mesh added for reinforcement
- 🔑 Solid steel rebar cage with bottom and sides reinforced with 5/8" rebar (or customer spec) on 6", 8", or 12" centers as required
- 🔑 Option to pour on a slope to match existing terrain
- 🔑 Notched out per customer requirement for depth and size to drop over existing line

A & L Vault Company

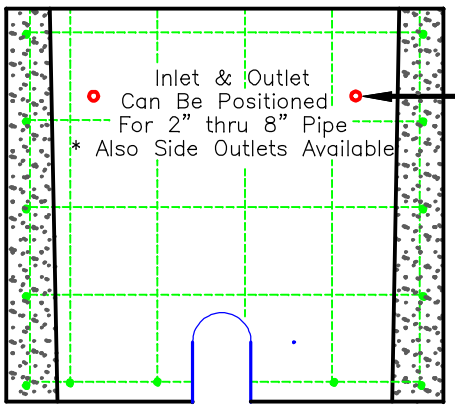
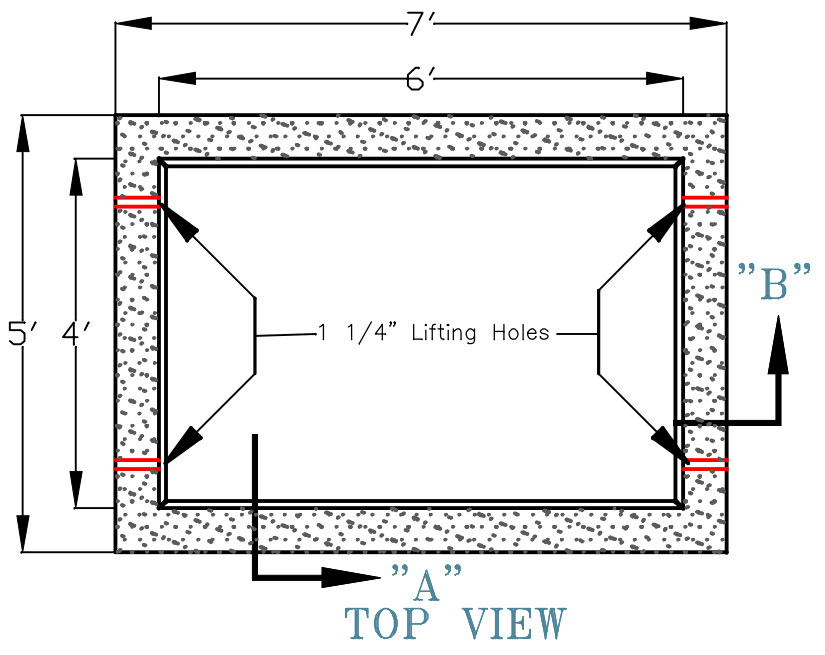
P.O. Box 815
111 E.Pryor St.
Athens AL 35612

(256) 232-2100
Scale 1/4" = 1"

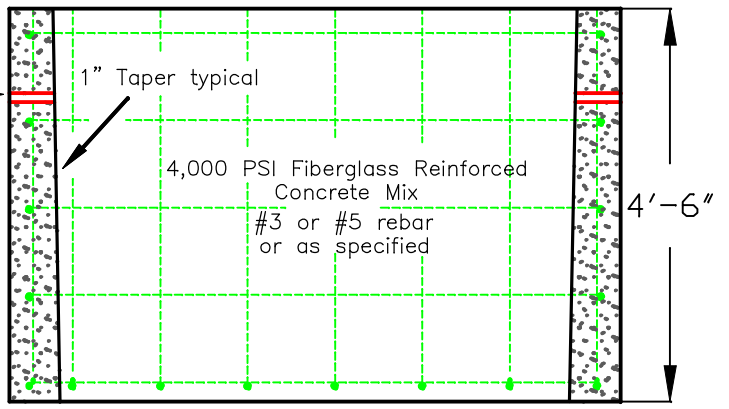
A&L-7248DHN6

VAULT CONSTRUCTION FEATURES

- 4,000 PSI Fiberglass Reinforced Concrete Mix
- #3 or # 5 Rebar or As Specified
- Lifting Hooks
- Pipe Penetrations Sealed with Waterproofing



SIDE VIEW "A"



FRONT VIEW "B"

Please note that the dimensions are typical due to variations during the curing may have minute changes

A&L-7248DHN6

A&L-7248RIS6

7248-6 Concrete Vault – Risers

Dimensions: Length x Width x Depth
 Inside: 72" x 48" x Varies (18" to 54")
 Outside: 84" x 60" x Varies (18" to 54")

- 🔑 4000 psi concrete mix with Fiber Mesh added for reinforcement
- 🔑 Solid steel rebar cage with bottom and sides reinforced with 5/8" rebar (or customer spec) on 6", 8", or 12" centers as required
- 🔑 Option to pour on a slope to match existing terrain
- 🔑 Available in 18" through 54" to hit exact elevation requirement
- 🔑 Ramneck sealant provided to prevent infiltration

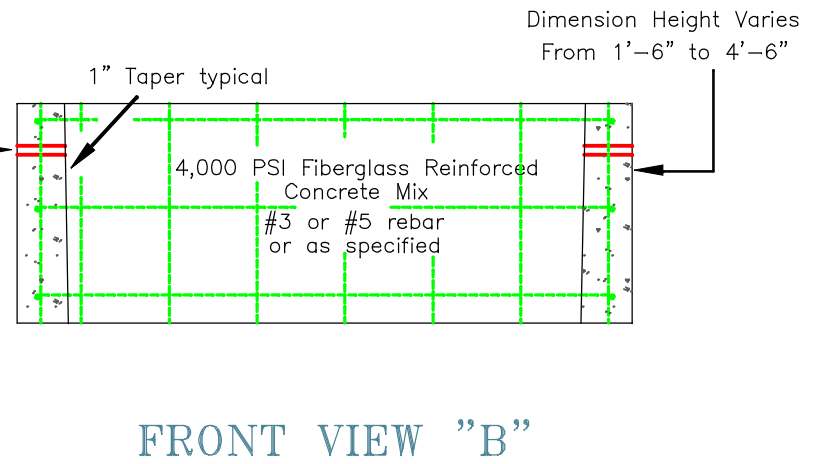
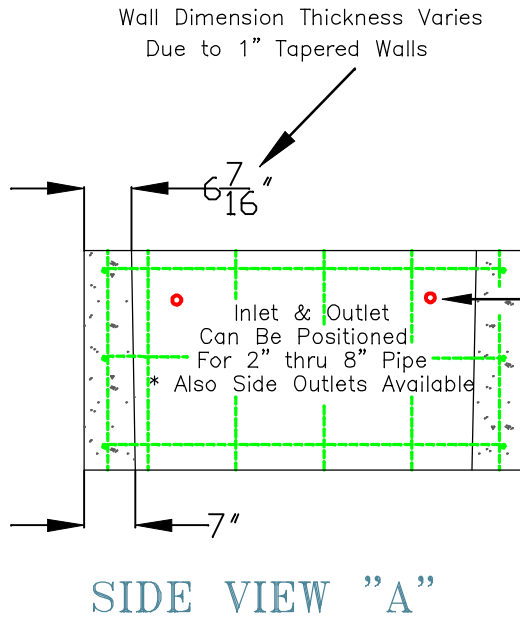
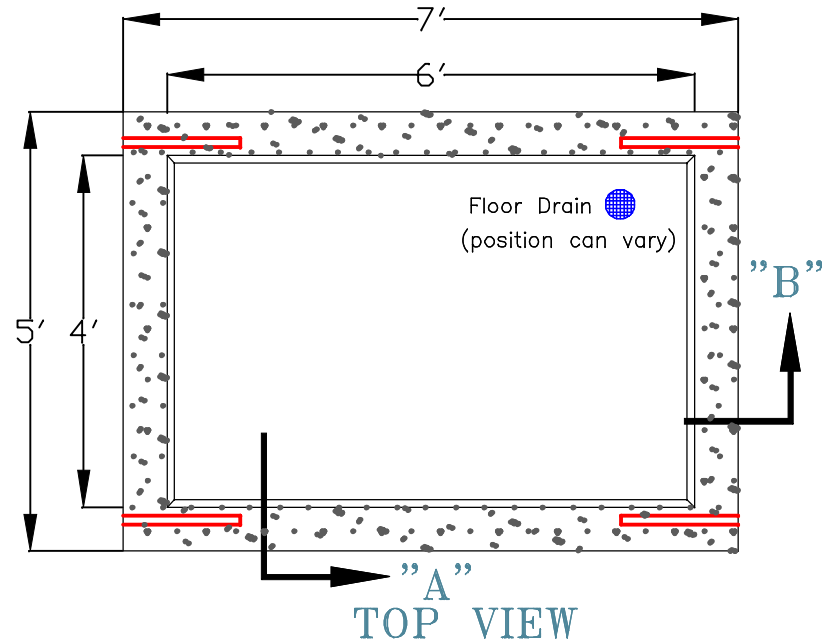
A & L Vault Company

P.O. Box 815
111 E. Pryor St.,
Athens, AL 35612

(256) 232-2100
Scale 1/4" = 1"

VAULT CONSTRUCTION FEATURES

- 4,000 PSI Fiberglass Reinforced Concrete Mix
- #3 or #5 Rebar or As Specified
- Lifting Hooks
- Pipe Penetrations Sealed with Waterproofing



Please note that the dimensions are typical due to variations during the curing may have minute changes

A&L-7248RIS6

A&L-7248RIS6

A&L-7248SP6

7248-6 Concrete Vault – “Shallow Pattern”

Dimensions: Length x Width x Depth

Inside: 72” x 48” x Varies (18” to 54”)

Outside: 84” x 60” x Varies (18” to 60”)

- 🔑 4000 psi concrete mix with Fiber Mesh added for reinforcement
- 🔑 Solid steel rebar cage with bottom and sides reinforced with 5/8” rebar (or customer spec) on 6”, 8”, or 12” centers as required
- 🔑 4” Drain cast into floor, a sump hole is available as an option instead of 4” drain
- 🔑 1-1/4” steel lifting pipes cast horizontally into concrete on 4 corners and welded to rebar cage
- 🔑 Pipe penetrations are sleeved and grouted to maintain structural integrity and can be located per customer’s request at no charge
- 🔑 Option to pour on a slope to match existing terrain
- 🔑 Risers and dog house notched available

A&L-7248SP6

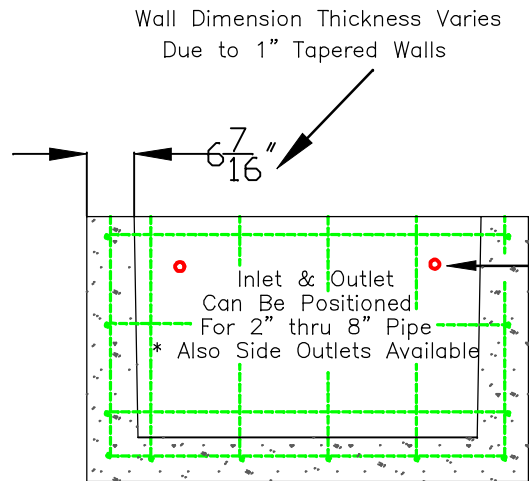
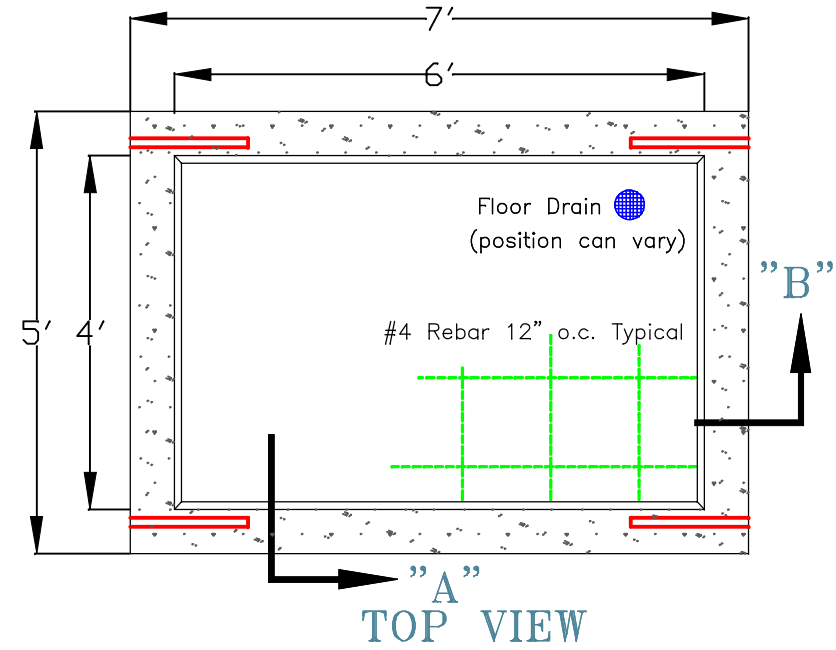
P.O. Box 815
111 E.Pryor St.
Athens Al. 35612

Scale 1/4" = 1"
(256) 232-2100

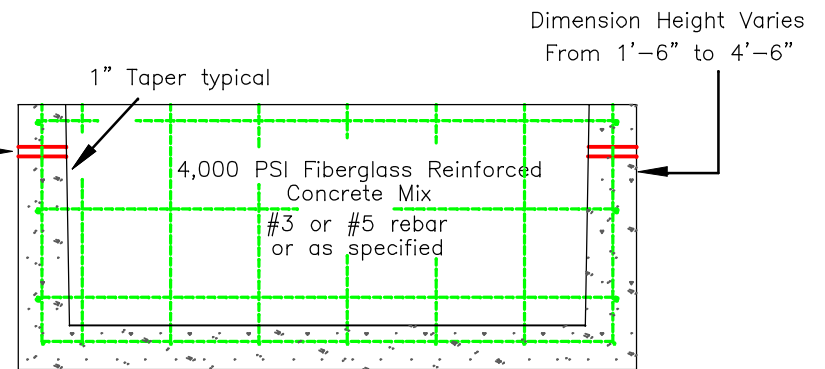
A & L Vault
Company

VAULT CONSTRUCTION FEATURES

- 4,000 PSI Fiberglass Reinforced Concrete Mix
- #3 or # 5 Rebar or As Specified
- Lifting Hooks
- Pipe Penetrations Sealed with Waterproofing



SIDE VIEW "A"



FRONT VIEW "B"

Please note that the dimensions are typical due to variations during the curing may have minute changes

A&L-7248SP6

A&L-9648ALM

9648 Aluminum Vault Lid – Foot Traffic Rated

- 🔑 1/4" Aluminum checker plate with stainless steel thumb latch cab lock for inside escape and T handle keyed for outside entry.
- 🔑 For additional security, the access door can be equipped with a staple for padlock as an option.
- 🔑 Double leaf
- 🔑 Full length aluminum piano hinges
- 🔑 Four tabs on inside to allow anchoring to sidewall to prevent theft
- 🔑 Water raceway inside attached to 1" drain to route to floor drain
- 🔑 Gas shocks applied to compensate for weight of door
- 🔑 Kickstand to prevent accidental closure

Company

A & L Vault

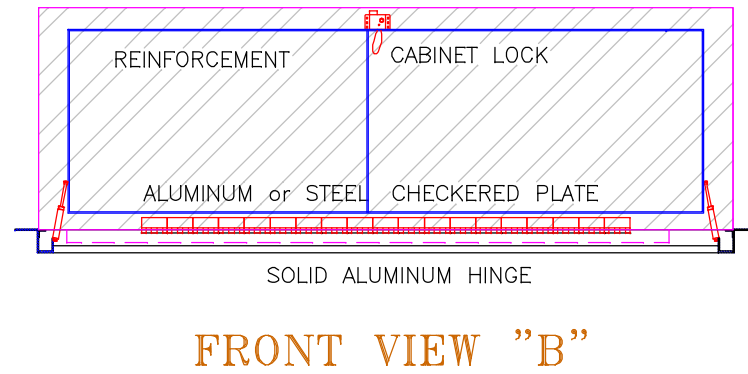
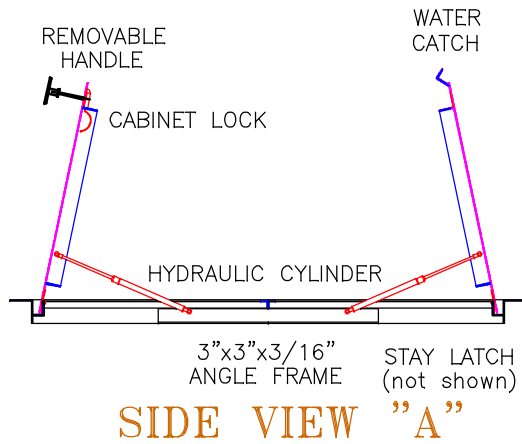
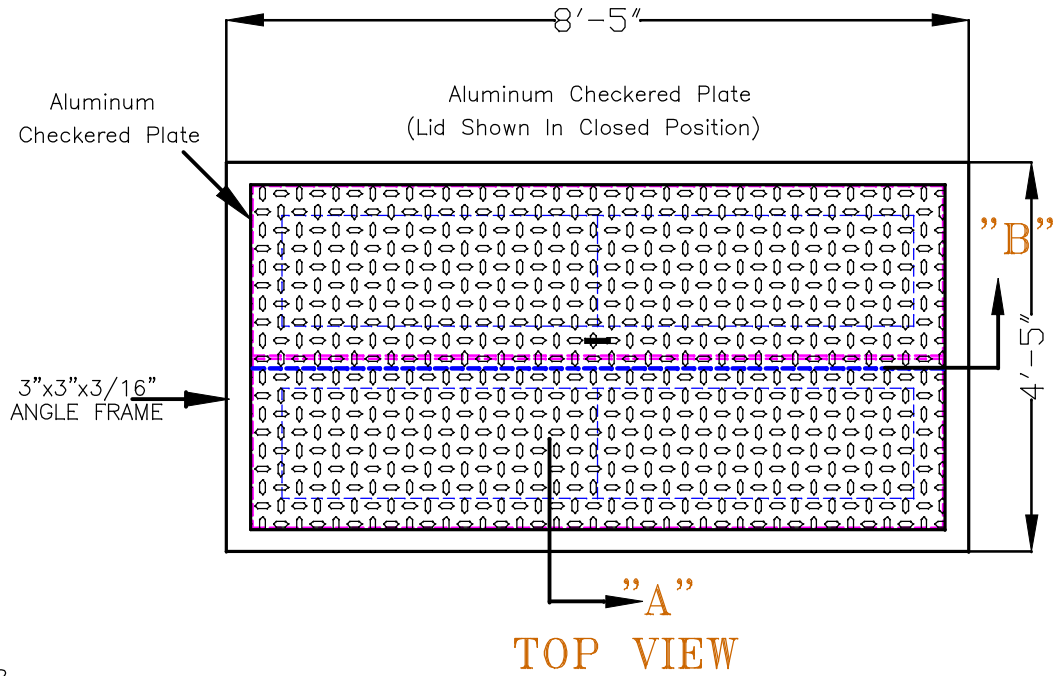
P.O. Box 815
111 E. Pryor St.
Athens, AL 35612

(256) 232-2100
Scale 1/4" = 1"

A&L-9648ALM

ALUMINUM HYDRAULIC LID LID CONSTRUCTION FEATURES

- 3"x3"x3/16" Aluminum Angle Frame
- 120 Force lbs Hydraulic Cylinder
- 2"x2"x1/8" Water Channel with 1" Drain
- Stainless Steel Cabinet Lock
- Removeable T-Handle for Security
- Full Length Piano Hinge




A&L-9648ALM

A&L-9648SLAB

9648-4 Concrete Lid With 3636 aluminum lid cast into 3-5/8" Concrete Slab

Dimensions: Length x Width x Depth
Outside: 102" x 54" x 3-5/8"

 A&L-3636ALM Aluminum checker plate lid cast into 3-5/8" concrete slab

 Foot traffic rated only

Company

A & L Vault

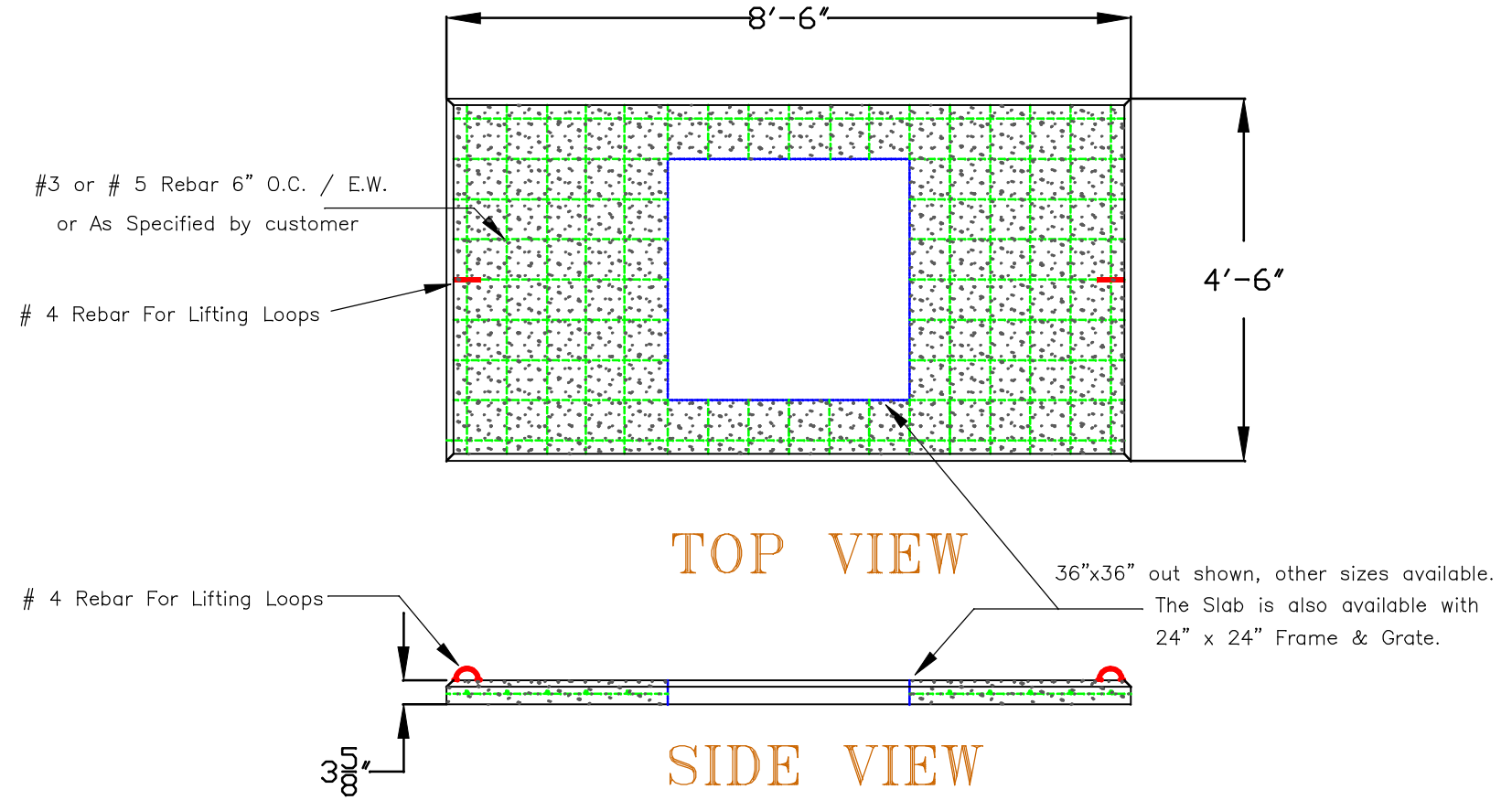
P.O. Box 815
111 E.Pryor St.
Athens Al. 35612

(256) 232-2100
Scale 1/2" = 1'

A&L-9648SLAB

SLAB CONSTRUCTION FEATURES

- 4,000 PSI Fiberglass Reinforced Concrete Mix
- #3 or # 5 Rebar or As Specified
- 1-1/4" Lifting Holes
- Pipe Penetrations Sealed with Waterproofing



Please note that the dimensions are typical due to variations during the curing may have minute changes

A&L-9648SLAB

A&L-9648CV

9648-4 Concrete Vault – Standard

Dimensions: Length x Width x Depth

Inside: 96" x 48" x 48"

Outside: 102" x 54" x 52"

- 🔑 4000 psi concrete mix with Fiber Mesh added for reinforcement
- 🔑 Solid steel rebar cage with bottom and sides reinforced with 5/8" rebar (or customer spec) on 6", 8", or 12" centers as required
- 🔑 Vault walls taper from top to bottom; inside dimensions are less at bottom
- 🔑 4" Drain cast into floor, a sump hole is available as an option instead of 4" drain
- 🔑 1-1/4" steel lifting pipes cast horizontally into concrete on 4 corners and welded to rebar cage
- 🔑 Pipe penetrations are sleeved and grouted to maintain structural integrity and can be located per customer's request at no charge
- 🔑 Option to pour on a slope to match existing terrain
- 🔑 Risers and dog house notched available
- 🔑 Vaults available with or without a bottom see Risers and Dog House Vaults

Company

A & L Vault

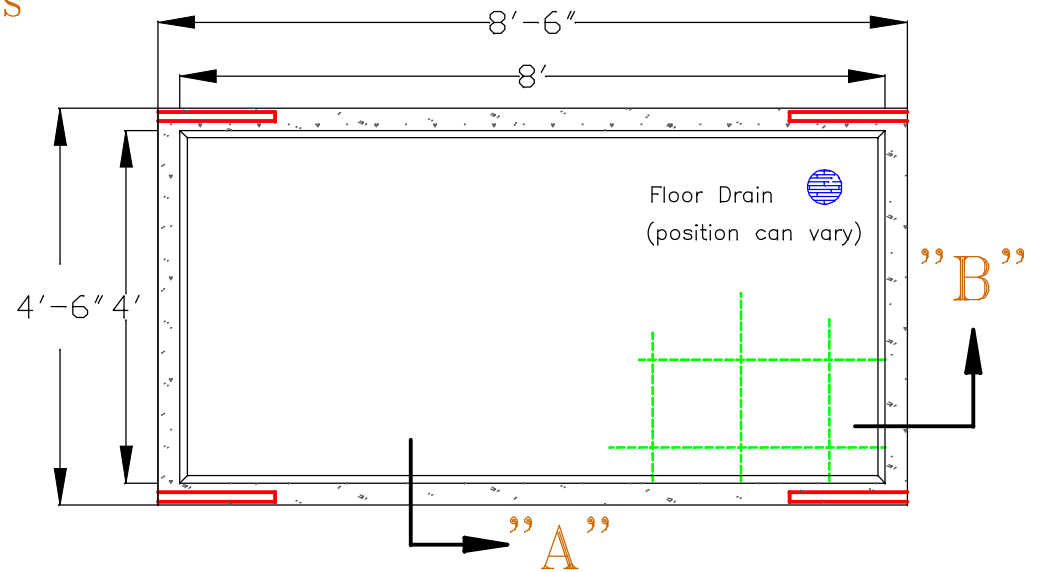
P.O. Box 815
111 E. Pryor St.,
Athens, AL 35612

(256) 232-2100
Scale 1/4" = 1"

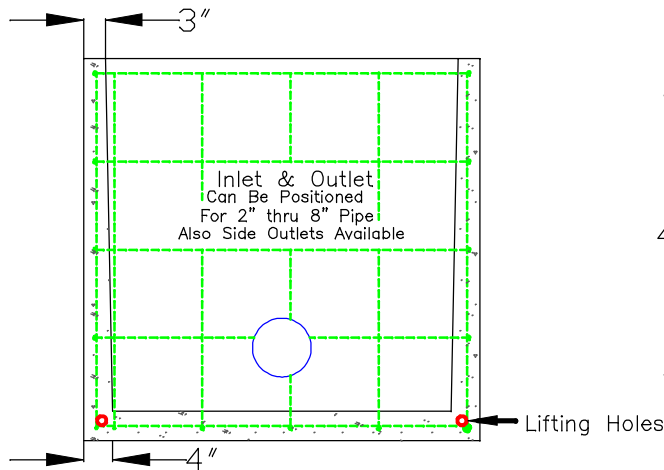
A&L-9648CV

VAULT CONSTRUCTION FEATURES

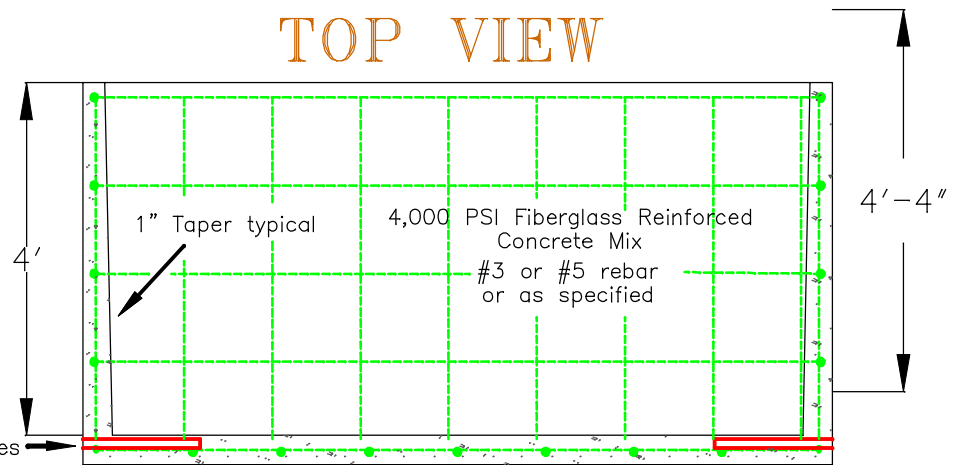
- 4,000 PSI Fiberglass Reinforced Concrete Mix
- #3 or # 5 Rebar or As Specified
- 1-1/4" Lifting Holes
- Pipe Penetrations Sealed with Waterproofing



TOP VIEW



SIDE VIEW "A"



SIDE VIEW "B"

Please note that the dimensions are typical due to variations during the curing may have minute changes

A&L-9648CV

A&L-9648DHN

9648-4 Concrete Vault– Dog House Notched – No Bottom

Dimensions: Length x Width x Depth

Inside: 96" x 48" x 48"

Outside: 102" x 54" x 48"

- 🔑 4000 psi concrete mix with Fiber Mesh added for reinforcement
- 🔑 Solid steel rebar cage with bottom and sides reinforced with 5/8" rebar (or customer spec) on 6", 8", or 12" centers as required
- 🔑 Option to pour on a slope to match existing terrain
- 🔑 Notched out per customer requirement for depth and size to drop over existing line

A & L Vault Company

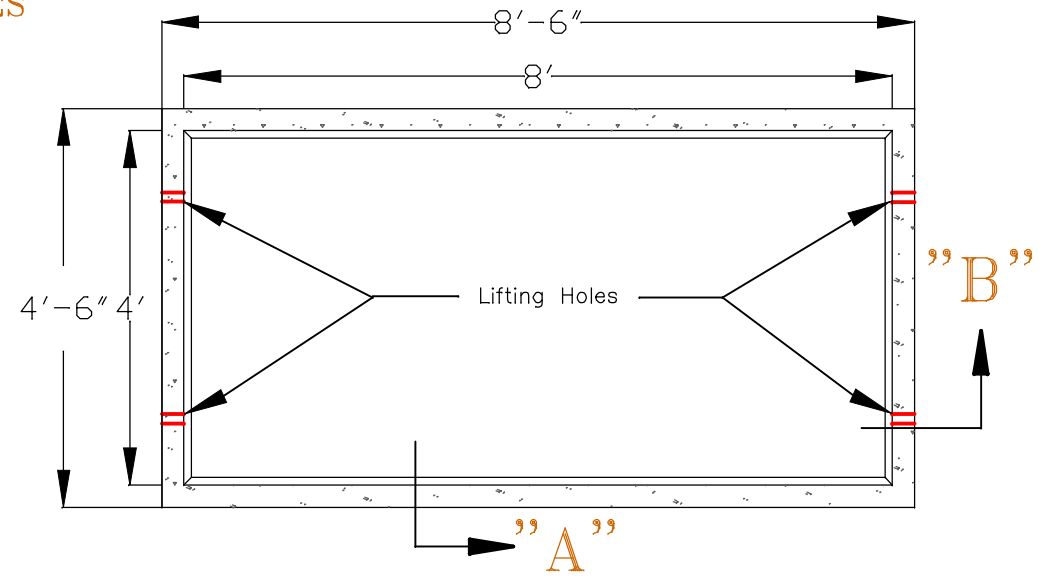
P.O. Box 815
111 E.Pryor St.
Athens, AL 35612

(256) 232-2100
Scale 1/4" = 1"

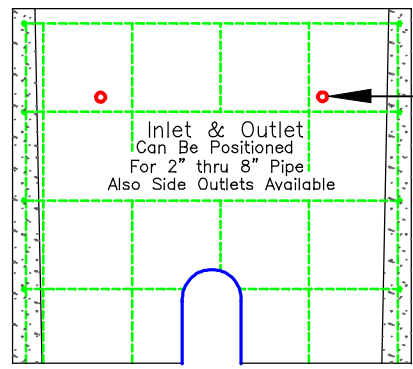
A&L-9648DHN

VAULT CONSTRUCTION FEATURES

- 4,000 PSI Fiberglass Reinforced Concrete Mix
- #3 or #5 Rebar or As Specified
- 1-1/4" Lifting Holes
- Pipe Penetrations Sealed with Waterproofing

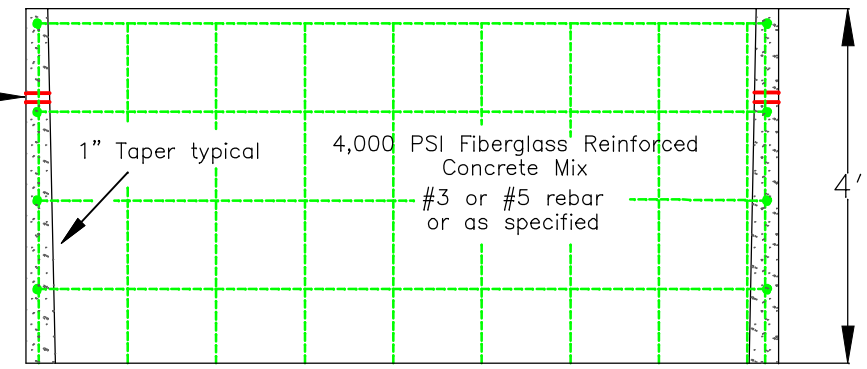


TOP VIEW



SIDE VIEW "A"

1-1/4" Lifting Holes



SIDE VIEW "B"

Please note that the dimensions are typical due to variations during the curing may have minute changes

A&L-9648DHN

A&L-9648RIS

9648-4 Concrete Vault – Risers

Dimensions: Length x Width x Depth

Inside: 96" x 48" x Varies (18" to 48")

Outside: 102" x 54" x Varies (18" to 48")

- 🔑 4000 psi concrete mix with Fiber Mesh added for reinforcement
- 🔑 Solid steel rebar cage with bottom and sides reinforced with 5/8" rebar (or customer spec) on 6", 8", or 12" centers as required
- 🔑 Option to pour on a slope to match existing terrain
- 🔑 Available in 18" through 48" to hit exact elevation requirement
- 🔑 Ramneck sealant provided to prevent infiltration

Company

A & L Vault

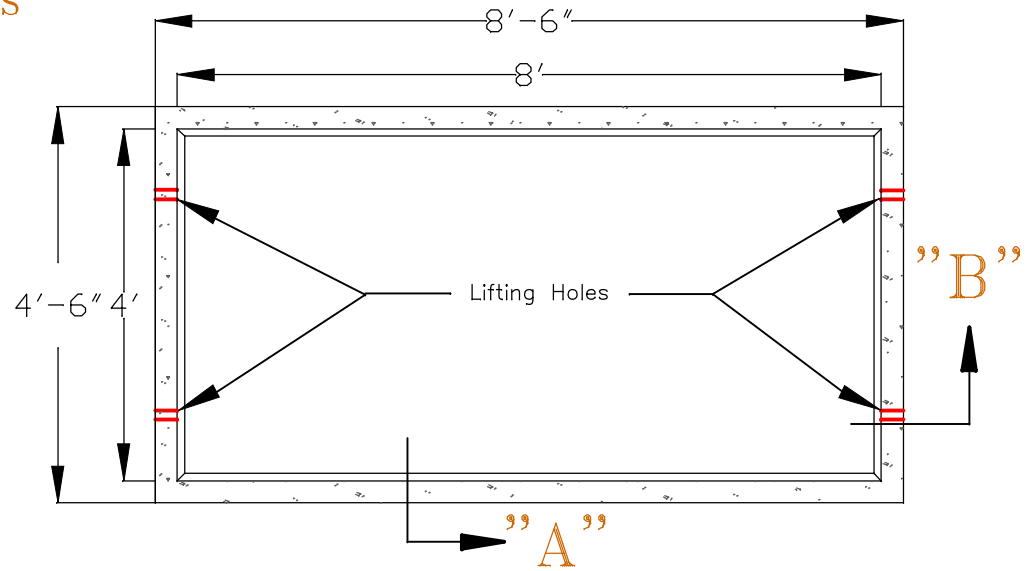
P.O. Box 815
111 E.Pryor St.
Athens Al. 35612

(256) 232-2100
Scale 1/4" = 1"

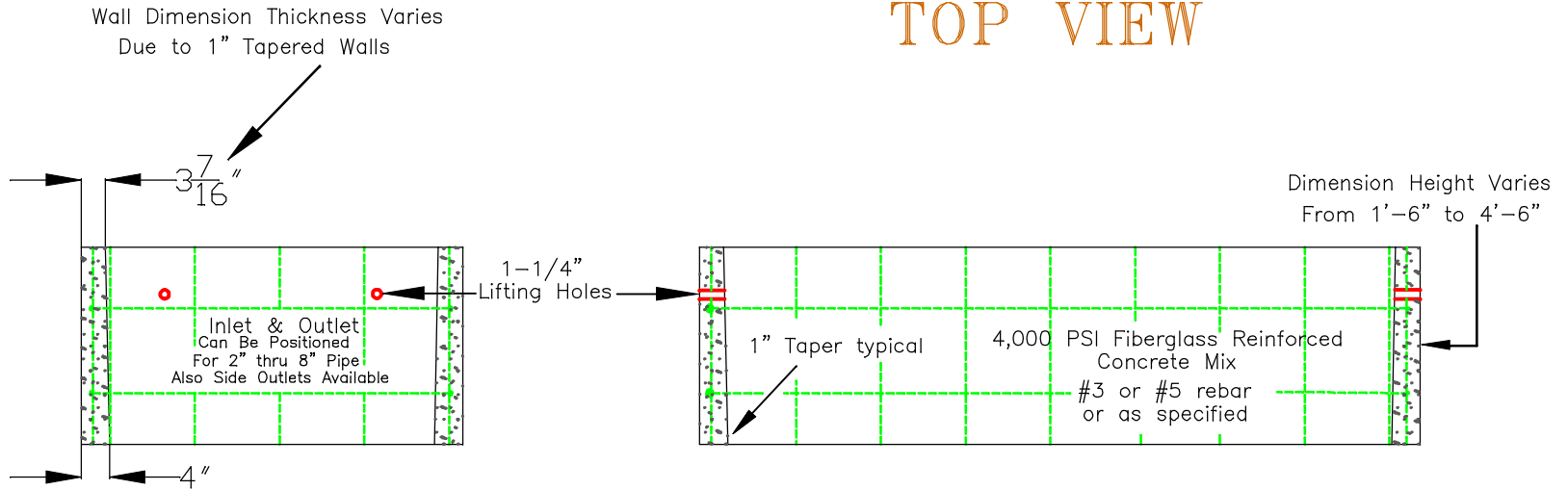
A&L-9648RIS

VAULT CONSTRUCTION FEATURES

- 4,000 PSI Fiberglass Reinforced Concrete Mix
- #3 or # 5 Rebar or As Specified
- 1-1/4" Lifting Holes
- Pipe Penetrations Sealed with Waterproofing



TOP VIEW



SIDE VIEW "A"

SIDE VIEW "B"

Please note that the dimensions are typical due to variations during the curing may have minute changes

A&L-9648RIS

A&L-9648SP

9648-4 Concrete Vault – “Shallow Pattern”

Dimensions: Length x Width x Depth
 Inside: 96” x 48” x Varies (18” to 48”)
 Outside: 102” x 54” x Varies (18” to 52”)

- 🔑 4000 psi concrete mix with Fiber Mesh added for reinforcement
- 🔑 Solid steel rebar cage with bottom and sides reinforced with 5/8” rebar (or customer spec) on 6”, 8”, or 12” centers as required
- 🔑 4” Drain cast into floor, a sump hole is available as an option instead of 4” drain
- 🔑 1-1/4” steel lifting pipes cast horizontally into concrete on 4 corners and welded to rebar cage
- 🔑 Pipe penetrations are sleeved and grouted to maintain structural integrity and can be located per customer’s request at no charge
- 🔑 Option to pour on a slope to match existing terrain
- 🔑 Risers and dog house notched available

Company

A & L Vault

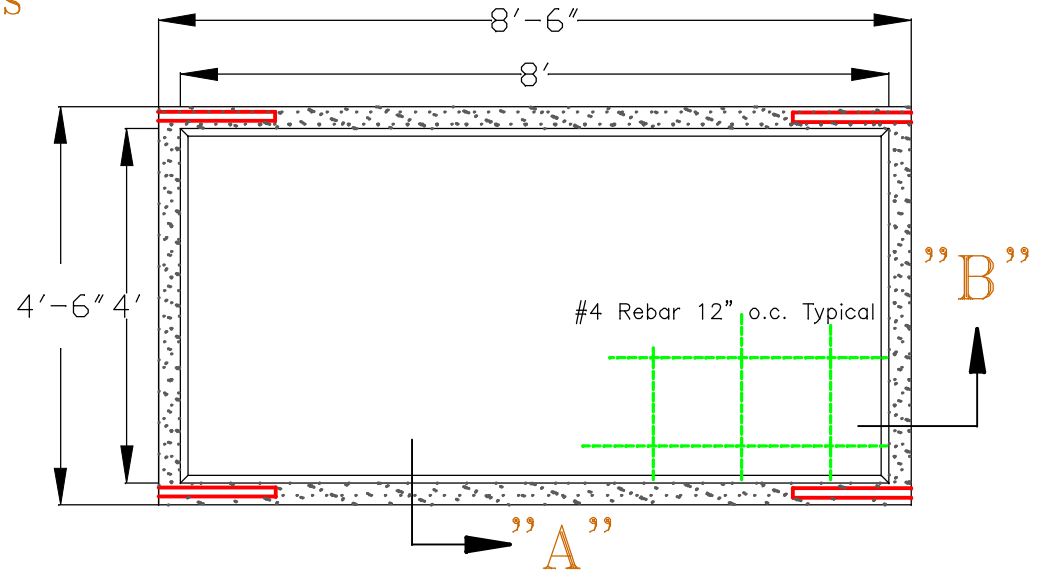
P.O. Box 815
111 E. Pryor St.
Athens, AL 35612

(256) 232-2100
Scale 1/4" = 1"

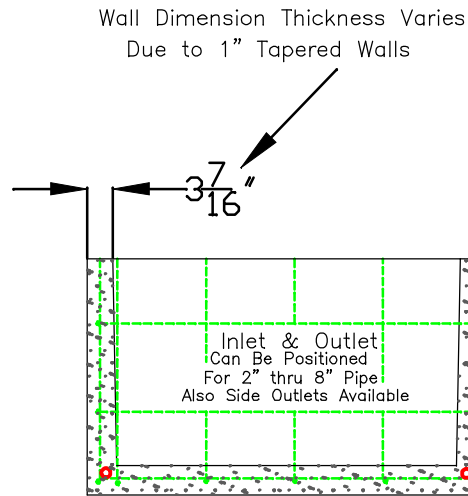
A&L-9648SP

VAULT CONSTRUCTION FEATURES

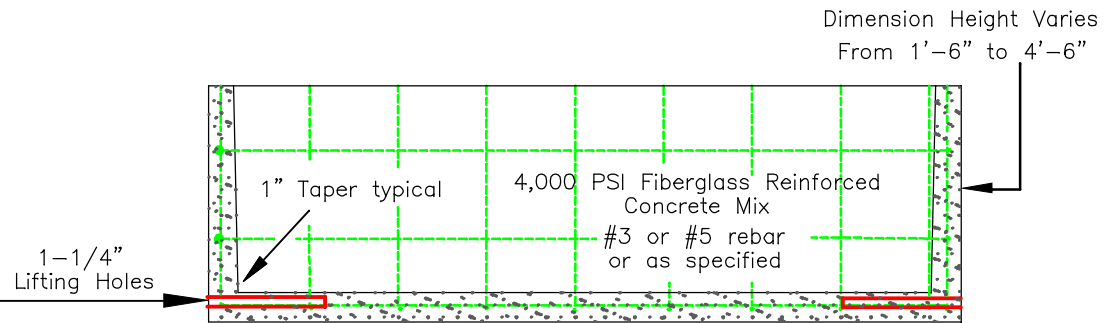
- 4,000 PSI Fiberglass Reinforced Concrete Mix
- #3 or #5 Rebar or As Specified
- 1-1/4" Lifting Holes
- Pipe Penetrations Sealed with Waterproofing



TOP VIEW



SIDE VIEW "A"



SIDE VIEW "B"

Please note that the dimensions are typical due to variations during the curing may have minute changes

A&L-9648SP

A&L-9660ALM

9660-6 ALUMINUM Vault Lid – Foot Traffic Rated

- 🔑 1/4" Aluminum checker plate with stainless steel thumb latch cab lock for inside escape and T handle keyed for outside entry.
- 🔑 For additional security, the access door can be equipped with a staple for padlock as an option.
- 🔑 Double leaf
- 🔑 Full length aluminum piano hinges
- 🔑 Four tabs on inside to allow anchoring to sidewall to prevent theft
- 🔑 Water raceway inside attached to 1" drain to route to floor drain
- 🔑 Gas shocks applied to compensate for weight of door
- 🔑 Kickstand to prevent accidental closure

Company

A & L Vault

P.O. Box 815
111 E.Pryor St.
Athens Al. 35612

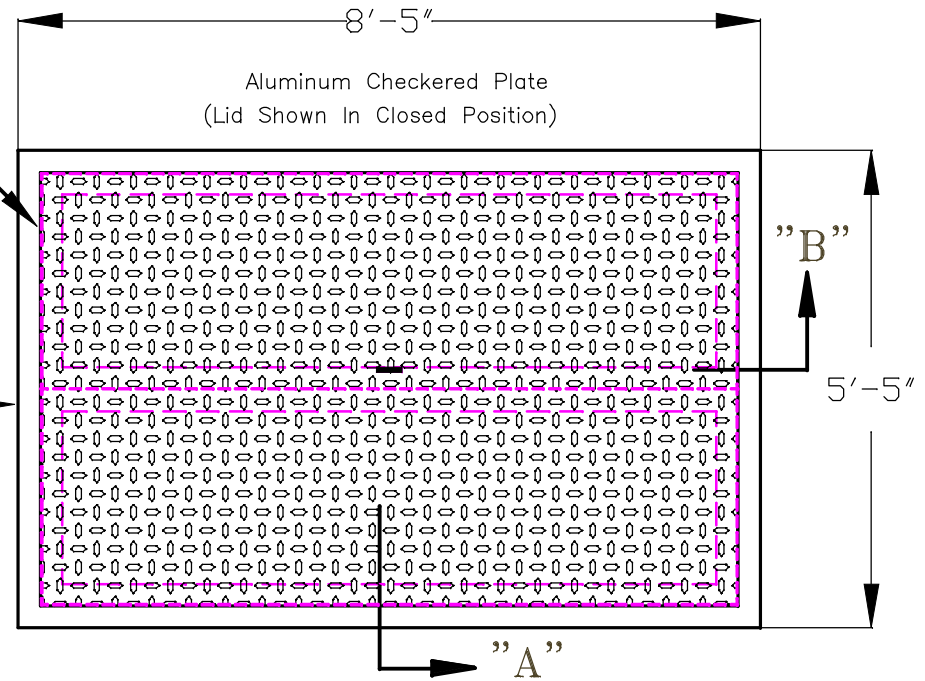
(256) 232-2100
Scale 1/4" = 1"

ALUMINUM HYDRAULIC LID LID CONSTRUCTION FEATURES

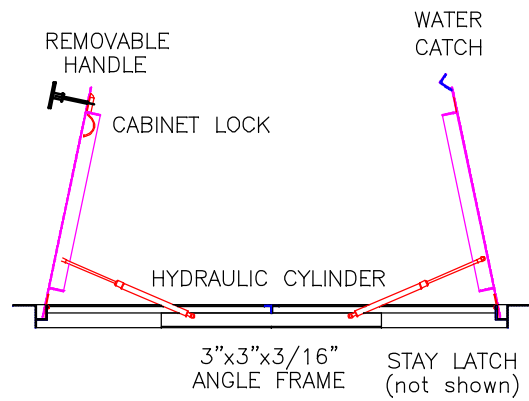
- 3"x3"x3/16" Aluminum Angle Frame
- 120 Force lbs Hydraulic Cylinder
- 2"x2"x1/8" Water Channel with 1" Drain
- Stainless Steel Cabinet Lock
- Removeable T-Handle for Security
- Full Length Piano Hinge

Aluminum
Checkered Plate

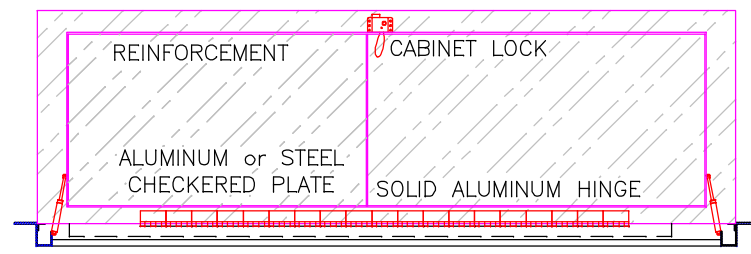
3"x3"x3/16"
ANGLE FRAME



"A"
TOP VIEW



SIDE VIEW "A"



FRONT VIEW "B"

A&L-9660ALM


A&L-9660ALM

A&L-9660SLAB

9660-6 Concrete Lid With 3636 aluminum lid cast into 3-5/8" Concrete Slab

Dimensions: Length x Width x Depth

Outside: 108" x 72" x 3-5/8"

 A&L-3636ALM Aluminum checker plate lid cast into 3-5/8" concrete slab

 Foot traffic rated only

A & L Vault Company

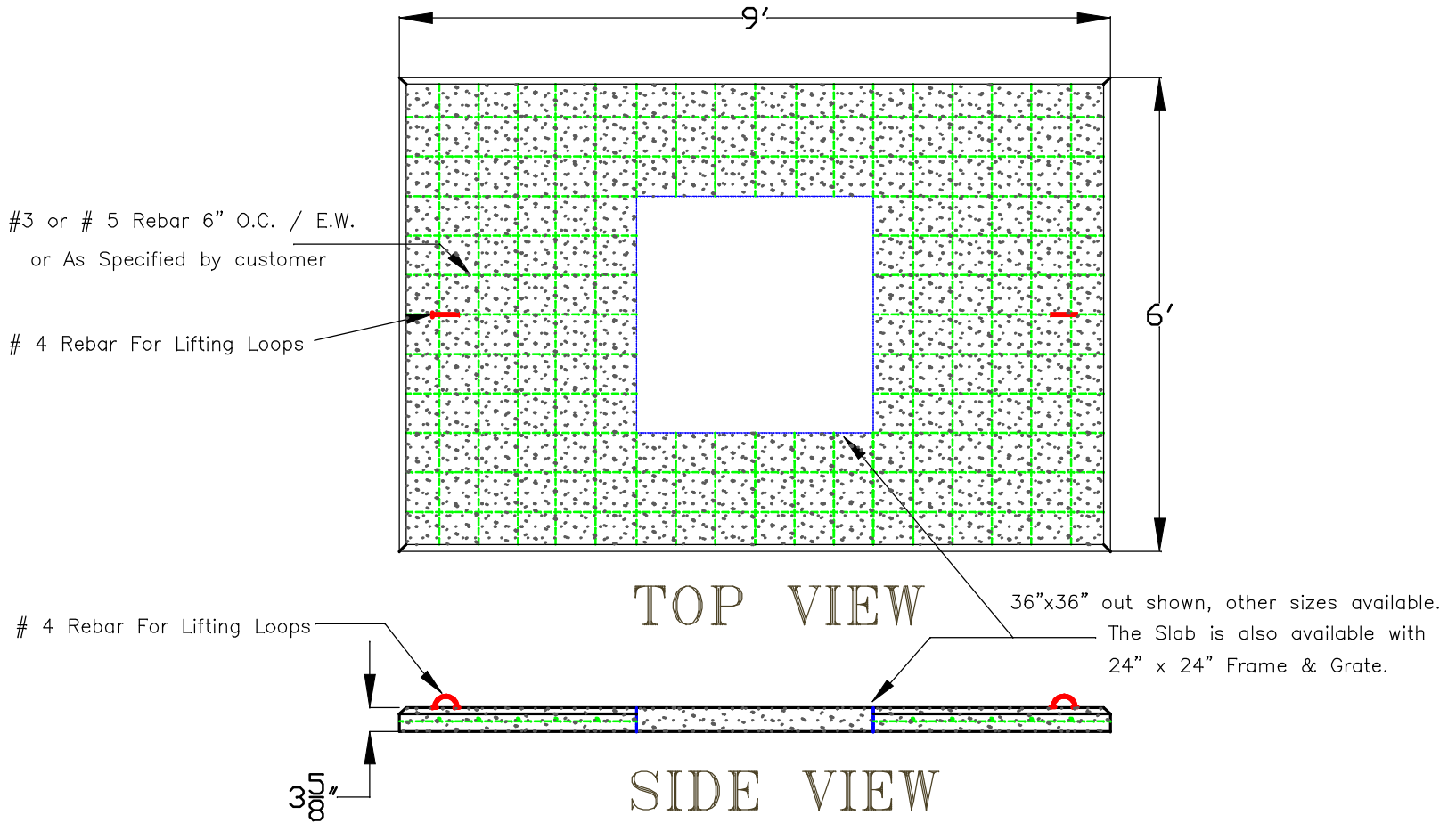
P.O. Box 815
111 E.Pryor St.
Athens Al. 35612

(256) 232-2100
Scale 1/2" = 1"

A&L-9660SLAB

SLAB CONSTRUCTION FEATURES

- 4,000 PSI Fiberglass Reinforced Concrete Mix
- #3 or # 5 Rebar or As Specified
- 1-1/4" Lifting Holes
- Pipe Penetrations Sealed with Waterproofing



Please note that the dimensions are typical due to variations during the curing may have minute changes

A&L-9660SLAB

A&L-9660CV

9660-6 Concrete Vault – Standard

Dimensions: Length x Width x Depth

Inside: 96" x 60" x 54"

Outside: 108" x 72" x 60"

- 🔑 4000 psi concrete mix with Fiber Mesh added for reinforcement
- 🔑 Solid steel rebar cage with bottom and sides reinforced with 5/8" rebar (or customer spec) on 6", 8", or 12" centers as required
- 🔑 Vault walls taper from top to bottom; inside dimensions are less at bottom
- 🔑 4" Drain cast into floor, a sump hole is available as an option instead of 4" drain
- 🔑 1-1/4" steel lifting pipes cast horizontally into concrete on 4 corners and welded to rebar cage
- 🔑 Pipe penetrations are sleeved and grouted to maintain structural integrity and can be located per customer's request at no charge
- 🔑 Option to pour on a slope to match existing terrain
- 🔑 Risers and dog house notched available
- 🔑 Vaults available with or without a bottom (see Risers and Dog House Vaults)

Company

A & L Vault

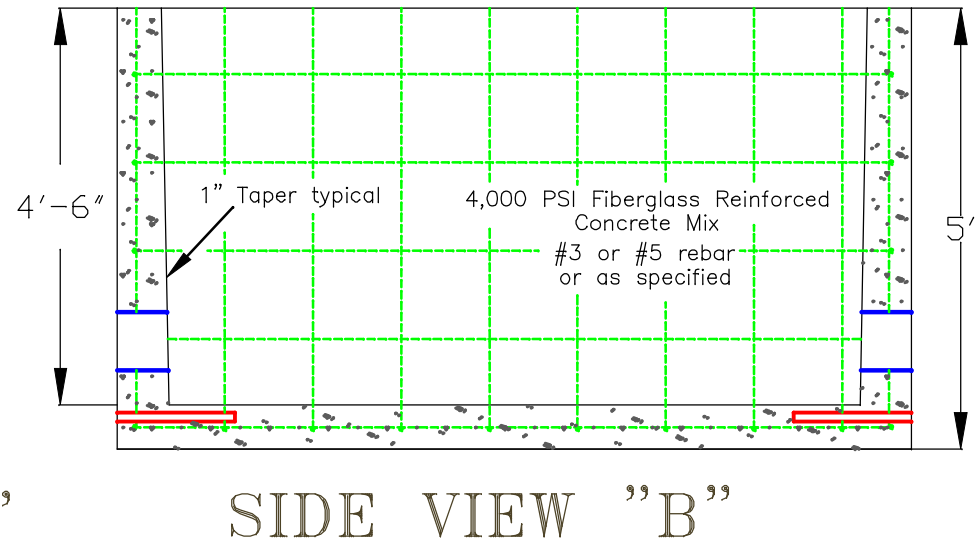
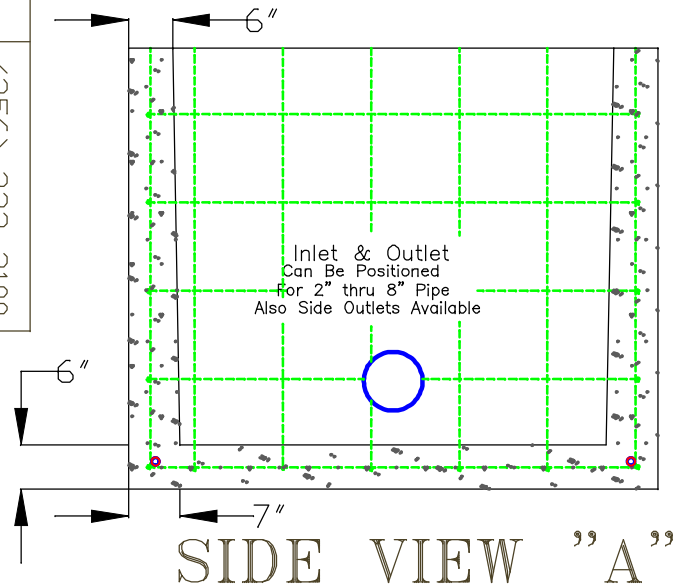
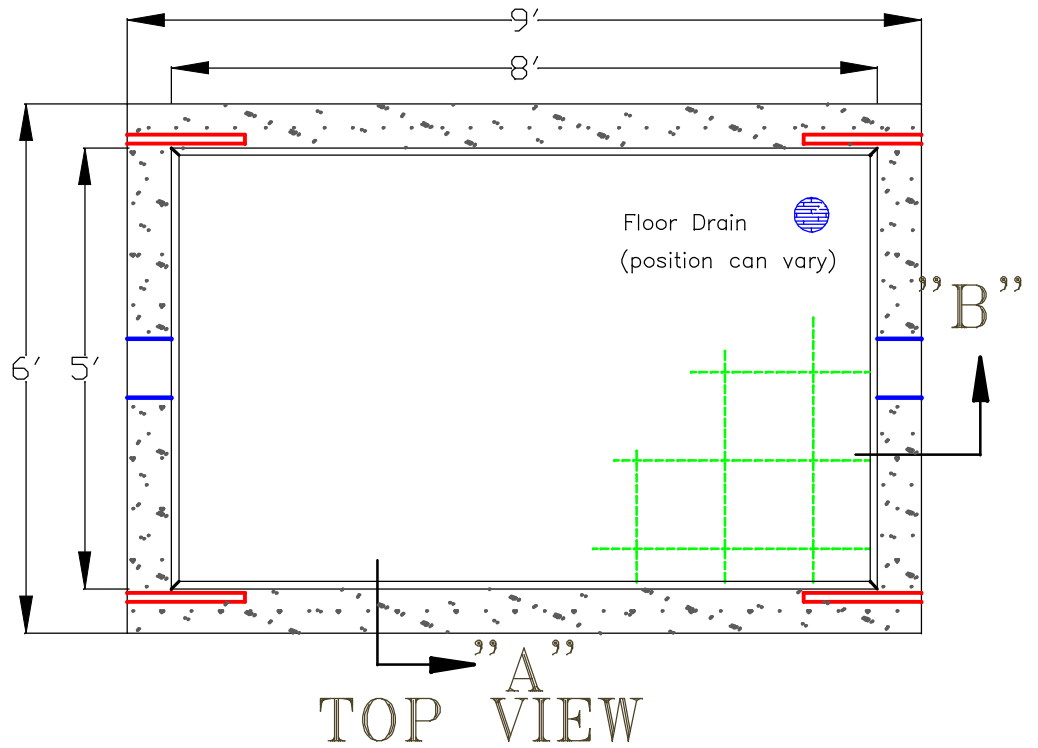
P.O. Box 815
111 E.Pryor St.
Athens Al. 35612

(256) 232-2100
Scale 1/4" = 1"

A&L-9660CV

VAULT CONSTRUCTION FEATURES

- 4,000 PSI Fiberglass Reinforced Concrete Mix
- #3 or # 5 Rebar or As Specified
- 1-1/4" Lifting Holes
- Pipe Penetrations Sealed with Waterproofing



Please note that the dimensions are typical due to variations during the curing may have minute changes

A&L-9660CV

A&L-9660DHN

9660-6 Concrete Vault– Dog House Notched – No Bottom

Dimensions: Length x Width x Depth

 Inside: 96" x 60" x 54"

 Outside: 108" x 72" x 54"

- 🔑 4000 psi concrete mix with Fiber Mesh added for reinforcement
- 🔑 Solid steel rebar cage with bottom and sides reinforced with 5/8" rebar (or customer spec) on 6", 8", or 12" centers as required
- 🔑 Option to pour on a slope to match existing terrain
- 🔑 Notched out per customer requirement for depth and size to drop over existing line

Company

A & L Vault

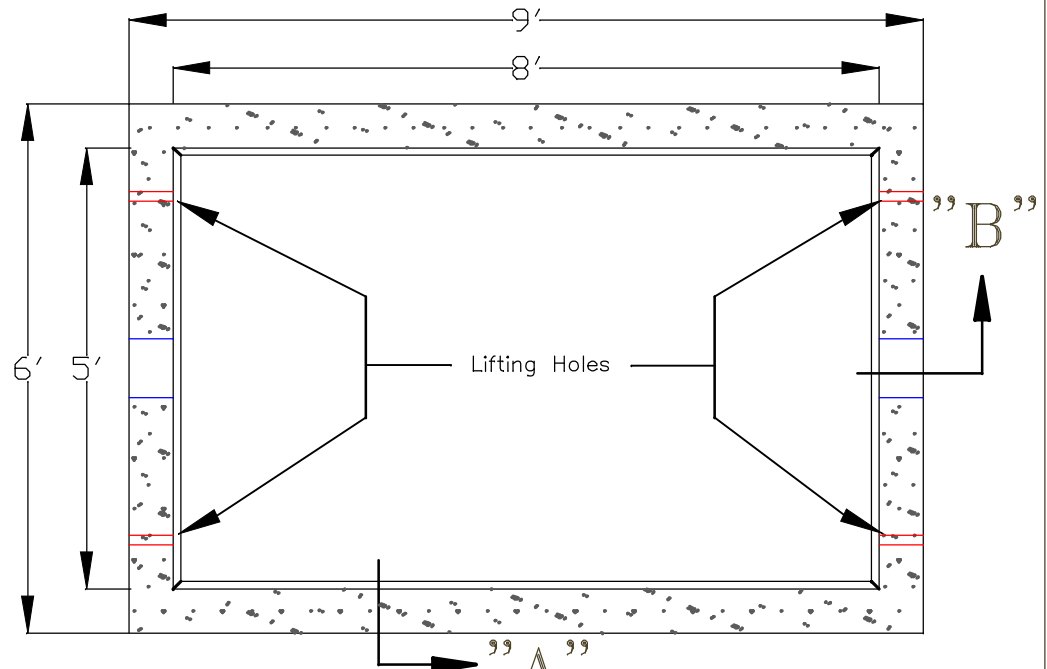
P.O. Box 815
111 E.Pryor St.
Athens Al. 35612

(256) 232-2100
Scale 1/4" = 1"

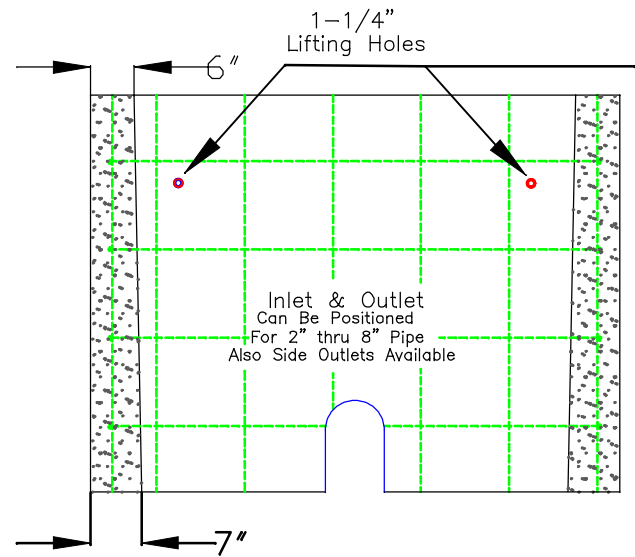
A&L-9660DHN

VAULT CONSTRUCTION FEATURES

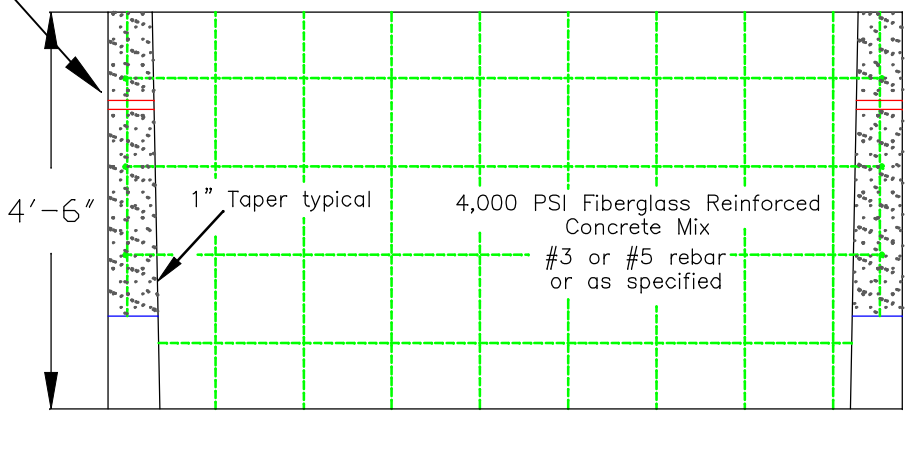
- 4,000 PSI Fiberglass Reinforced Concrete Mix
- #3 or # 5 Rebar or As Specified
- 1-1/4" Lifting Holes
- Pipe Penetrations Sealed with Waterproofing



TOP VIEW



SIDE VIEW "A"



SIDE VIEW "B"

Please note that the dimensions are typical due to variations during the curing may have minute changes

A&L-9660DHN

A&L-9660RIS

9660-6 Concrete Vault – Risers

Dimensions: Length x Width x Depth
 Inside: 96" x 60" x Varies (18" to 54")
 Outside: 108" x 72" x Varies (18" to 54")

- 🔑 4000 psi concrete mix with Fiber Mesh added for reinforcement
- 🔑 Solid steel rebar cage with sides reinforced with 5/8" rebar (or customer spec) on 6", 8", or 12" centers as required
- 🔑 Option to pour on a slope to match existing terrain
- 🔑 Available in 18" through 54" to hit exact elevation requirement
- 🔑 Ramneck sealant provided to prevent infiltration

Company

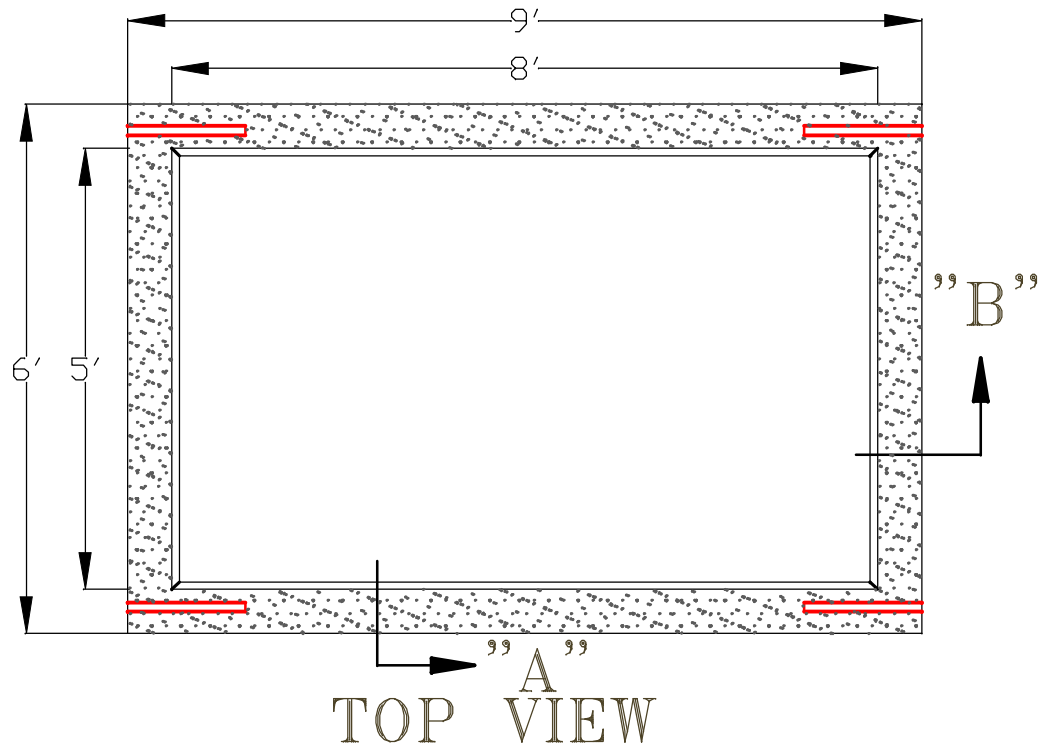
A & L Vault

P.O. Box 815
111 E.Pryor St.
Athens Al. 35612

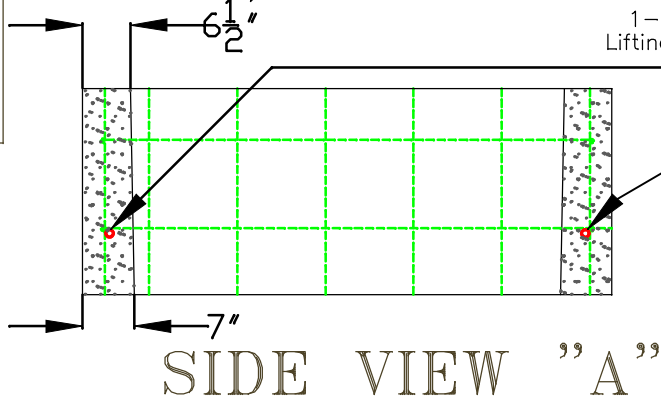
(256) 232-2100
Scale 1/4" = 1"

VAULT CONSTRUCTION FEATURES

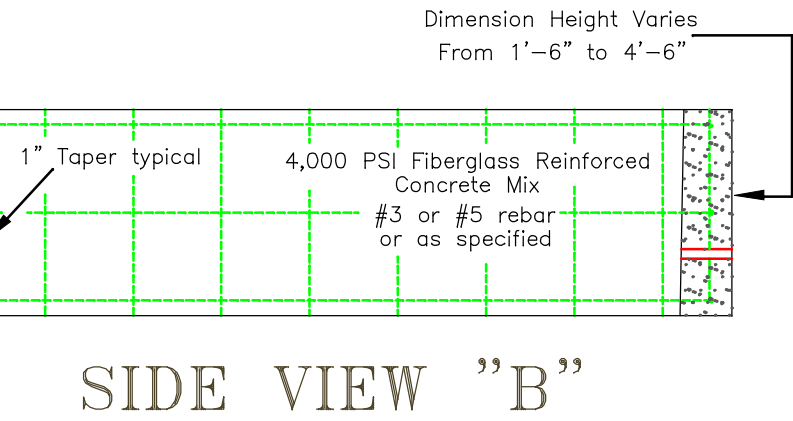
- 4,000 PSI Fiberglass Reinforced Concrete Mix
- #3 or # 5 Rebar or As Specified
- 1-1/4" Lifting Holes
- Pipe Penetrations Sealed with Waterproofing



Wall Dimension Thickness Varies
Due to 1" Tapered Walls



1-1/4" Lifting Holes



Dimension Height Varies
From 1'-6" to 4'-6"

SIDE VIEW "A"

SIDE VIEW "B"

Please note that the dimensions are typical due to variations during the curing may have minute changes

A&L-9660RIS

A&L-9660RIS

A&L-9660SP

9660 Concrete Vault – “Shallow Pattern”

Dimensions: Length x Width x Depth
 Inside: 96” x 60” x Varies (18” to 54”)
 Outside: 108” x 72” x Varies (18” to 60”)

- 🔑 4000 psi concrete mix with Fiber Mesh added for reinforcement
- 🔑 Solid steel rebar cage with bottom and sides reinforced with 5/8” rebar (or customer spec) on 6”, 8”, or 12” centers as required
- 🔑 4” Drain cast into floor, a sump hole is available as an option instead of 4” drain
- 🔑 1-1/4” steel lifting pipes cast horizontally into concrete on 4 corners and welded to rebar cage
- 🔑 Pipe penetrations are sleeved and grouted to maintain structural integrity and can be located per customer’s request at no charge
- 🔑 Option to pour on a slope to match existing terrain
- 🔑 Risers and dog house notched available

Company

A & L Vault

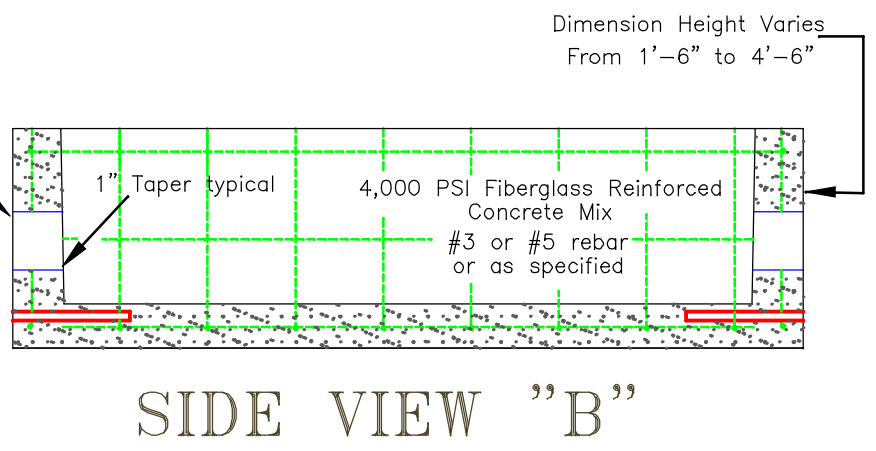
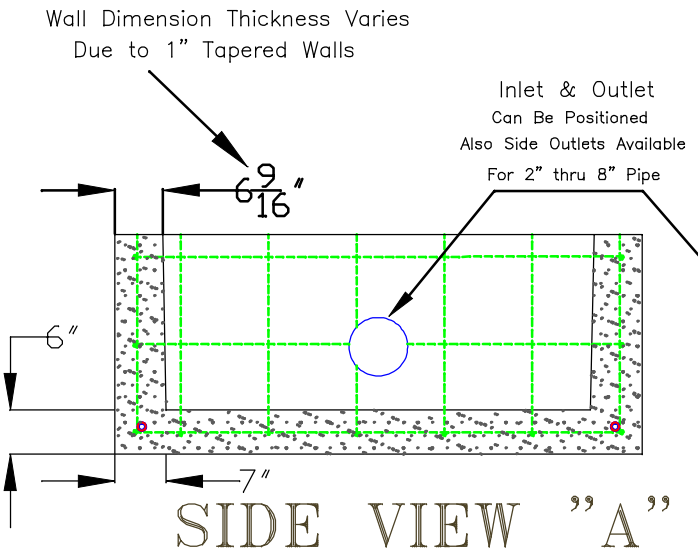
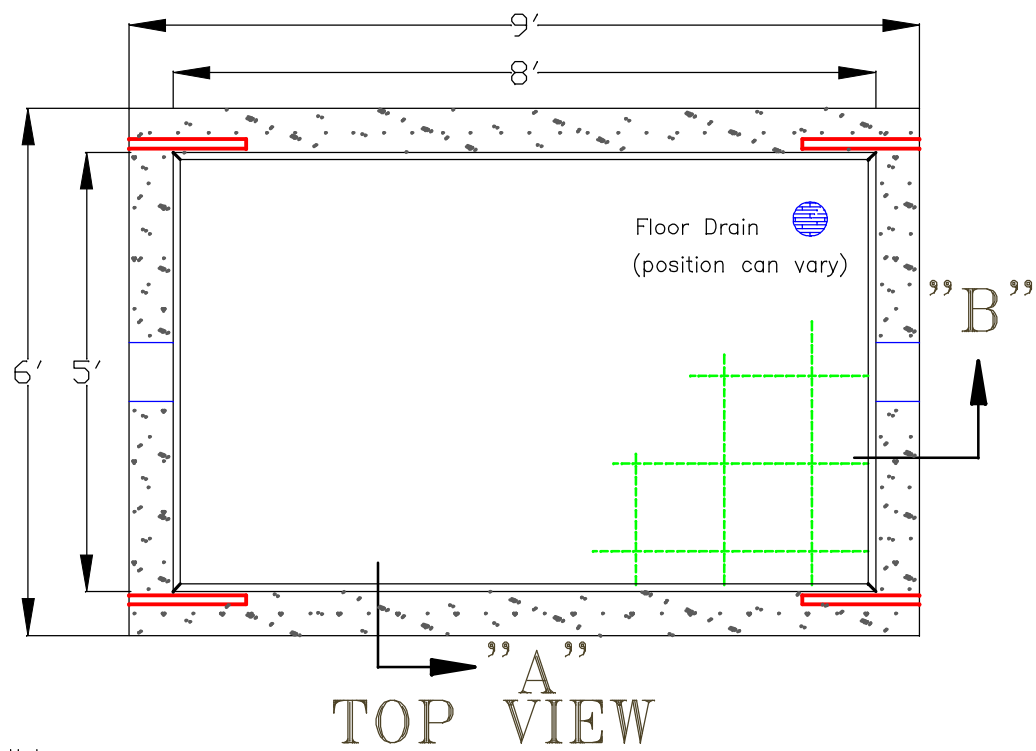
P.O. Box 815
111 E. Pryor St.,
Athens AL 35612

(256) 232-2100
Scale 1/4" = 1"

A&L-9660SP

VAULT CONSTRUCTION FEATURES

- 4,000 PSI Fiberglass Reinforced Concrete Mix
- #3 or #5 Rebar or As Specified
- 1-1/4" Lifting Holes
- Pipe Penetrations Sealed with Waterproofing



Please note that the dimensions are typical due to variations during the curing may have minute changes

A&L-9660SP