

## Small Works Art Show

Open Show

November 9 - December 22, 2017

A timely opportunity for **all artists, sculptors, craftsmen and photographers in all media** to create works of intimate beauty in a period of holiday gift-giving. Pieces of 120" square inches (including framing) or smaller are required for awards.

### AWARDS

"People's Show" Cash Award and Honorable Mentions.

### SHOW CALENDAR

**Wednesday, Nov. 1**

Postmark for Entry

**Tuesday, Nov. 7**

Drop off work 10am - 4pm

**Thursday, Nov. 9**

Show opens 10am - 4pm

**Thursday, Nov. 11**

Reception 5 - 7pm

Holiday Gift Shop Opens!

**Friday, Dec. 22**

Show Closes 4pm

*Works can be picked up at 3:30 on Dec. 22 or January 9*

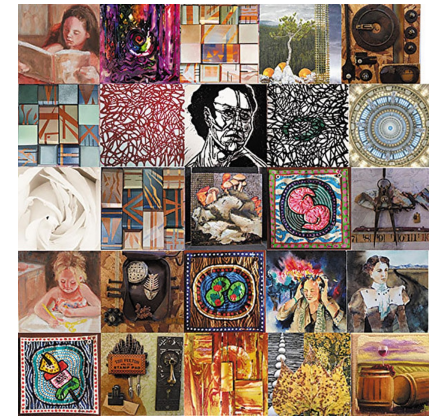
KENT ISLAND FEDERATION OF ARTS, INC.  
405 MAIN STREET  
STEVENSVILLE MD 21666



KENT ISLAND FEDERATION OF ARTS

## Small Works Art Show

An Open Show  
for All Media



*Small Works make wonderful original gifts!*

**November 9 - December 22, 2016**

**Reception Saturday  
November 11, 3 - 5pm**



## Small Works Art Show\*

Open Judged Show

November 9 - December 22, 2016

Small sculptures, intimate paintings and delicate glassworks, ceramics and crafted items with gift-giving in mind.

**\* Pieces of 120" square inches (including framing) or smaller are required for awards.**

### GUIDELINES

All work must be original, created within the past two years, and not previously shown in KIFA shows. It must not infringe upon any copyright and no reproductions accepted.

**2-D works must be dry, suitably framed, wired and ready to hang or placed on table top easels.** No saw-tooth hangers. Artwork not wired properly will not be accepted. Maximum size framed: 120" square. All works on paper must be under glass with no exposed edges.

**Small 3-D works can use an appropriate display fixture or fit on a KIFA pedestals (reserved when registering).** Sculpture art should be approximately 640 cubic inches (example: 8"x 8"x 10").

KIFA reserves the right to reject works that are deemed unsuitable. Works as they are sold may be taken from the exhibit. Reasonable care will be taken to ensure the safety of your artwork. KIFA is not liable for loss or damage. KIFA reserves the right to use photographs of the works for promotional purposes for a period of 18 months. All works not removed from the property within 30 days become property of KIFA.

### ENTRY FEES

Members: \$10 for first work, \$15 up to **six** works

Nonmembers: \$20 up to **six** works

Youth/College: \$2 per up to **six** works

### REGISTRATION

Complete parts 1 & 2 of the entry form.

**Mail Entry Form and Part 1 with payment to KIFA by Wednesday, Nov. 1**

**Drop off works Tuesday, Nov. 7 10-4.**

Affix Part 2 to the back of each work. Duplicate form for additional works.

**By entering, you agree to all the stipulations of this prospectus.**

### KIFA MEMBERSHIP

Seniors \$35

Individuals \$40

Family \$50

Youth/College \$15

Sponsorships \$100+

A membership fee may be combined with entry fee.

Please specify the type and amount on the check.

**For questions, please contact the KIFA office at 410-643-7424, or email at [info@kifa.us](mailto:info@kifa.us)**

For additional information our website

**[www.kifa.us](http://www.kifa.us)**



### Entry Form **Part 1** - Bring with Artworks

Name\_\_\_\_\_

Address\_\_\_\_\_

Phone\_\_\_\_\_ Youth\_\_\_\_\_

Email\_\_\_\_\_

### Art Works

#### Piece 1

Name\_\_\_\_\_

Title\_\_\_\_\_

Price\_\_\_\_\_ Medium \_\_\_\_\_

#### Piece 2

Name\_\_\_\_\_

Title\_\_\_\_\_

Price\_\_\_\_\_ Medium \_\_\_\_\_

#### Piece 2

Name\_\_\_\_\_

Title\_\_\_\_\_

Price\_\_\_\_\_ Medium \_\_\_\_\_

.....  

### Entry Form **Part 2** – Attach to each piece

#### Piece 1

Name\_\_\_\_\_

Title\_\_\_\_\_

Price\_\_\_\_\_ Medium \_\_\_\_\_

#### Piece 2

Name\_\_\_\_\_

Title\_\_\_\_\_

Price\_\_\_\_\_ Medium \_\_\_\_\_

#### Piece 2

Name\_\_\_\_\_

Title\_\_\_\_\_

Price\_\_\_\_\_ Medium \_\_\_\_\_