



# Playground Surfacing & Interactive Audio Tower Catalog

2020

Just for the fun of it!®





# PlayMax®

Safe and Fun Playground Surfacing

[www.playmaxsurfacing.com](http://www.playmaxsurfacing.com)



## MaxPour®

AMERICA'S VERSATILE PLAY SURFACE

MaxPour® playground surfacing is a poured-in-place playground system built around a standard 1/2" thick top layer. We use the finest quality Rosehill TPV granules in a 1-4 mm size for our top layers, bound by MaxPour® aromatic binder.

Versions using MaxPour® aliphatic binder are possible at extra cost.



### Specifier's Note:

Standard (aromatic) binders can impart a slight "ambering" effect to colors, therefore aliphatic binders are suggested for systems using pastel or lighter colors which can be affected.

Aliphatic binders have a crystal-clear consistency, but must be specified, as the industry standard is to use aromatics, and systems are priced using aromatics unless otherwise requested.

**With 24 standard TPV colors available, you really get your money's worth with MaxPour®.**

## 24 Exciting Rosehill TPV Colors







## MaxPour® Supreme

### TOUGH AND READY FOR ACTION

Nothing says "Supreme" quite like our **MaxPour® Supreme** playground surfacing. Constructed of fine-granule TPV (0.5 mm - 1.5 mm Rosehill TPV) and MaxPour® Aliphatic Polyurethane binder, our MaxPour® Supreme is tough and ready for the roughest duty.

The tight, highly dense top layer is made possible by using smaller granules than our standard MaxPour® system. This gives the system additional density and toughness, as well as a full 1/2" top thickness, leading to a longer service life.



To verify product certification visit [www.ipema.org](http://www.ipema.org)

#### MaxPour

(1-4 mm TPV granules and standard binder)



#### MaxPour Supreme

(0.5-1.5 mm TPV granules and aliphatic binder)



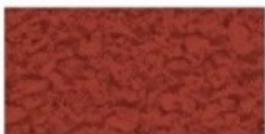
### Specifier's Note:

MaxPour® Supreme is available in the four basic colors and black. The reason for this is that Rosehill currently imports to the US these basic colors only in the TPV 0.5 - 1.5 mm (small) granule size.

Other standard RoseHill TPV colors are available on a special-order basis, but would require an additional 8 weeks lead time to receive from the UK. Because of this, we think it makes sense to stick with the basic four colors and black. This to prevent project delays, color matching on revision work and other factors.



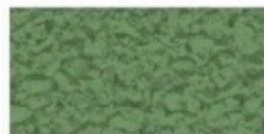
## FIVE BASIC COLORS



Standard Red  
RH01



Standard Blue  
RH20



Standard Green  
RH10



Beige  
RH30



Black  
RH70

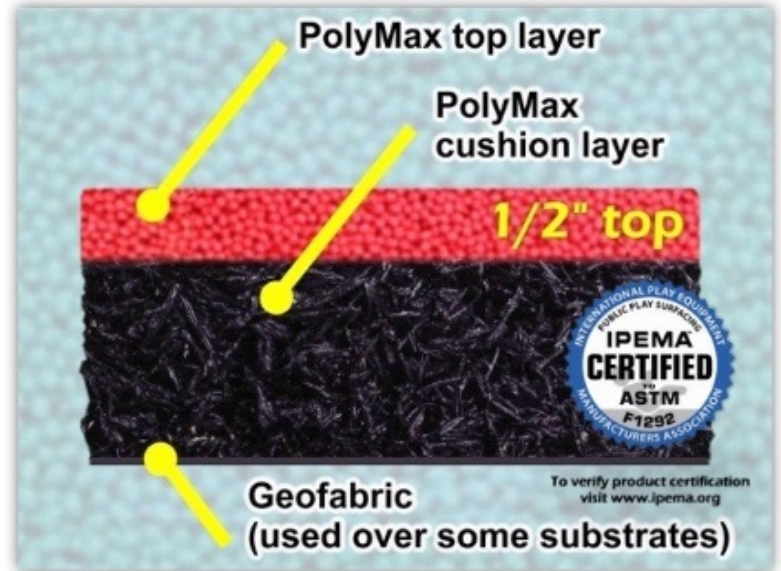




## POLY MAX

### POLY BEAD PLAYGROUND SURFACING

**PolyMax®** is our next generation, safe and fun playground surfacing. PlayMax has partnered with industry-leader **PolySoft** to provide our exclusive PolyMax® playground surfacing. Featuring high-quality polyolefin beads and crystal-clear aliphatic binder, PolyMax® is designed to give playground owners a new look and new performance in playground surfacing.



PolyMax® is a great choice for any new playground, but really is the favorite for parks which feature spray grounds. Because PolyMax® uses the same high-quality polyolefin beads as our SplashMax® water play system, designers can create parks and spray grounds with unified design themes, using matching colors, textures and surfaces. What a terrific design tool for architects, municipalities and park designers everywhere.

PolyMax® beads are sun resistant too - making colors vibrant for a longer time than ordinary surfacing.

With an industry-leading 1/2" thick wearing surface for high-durability, PolyMax® has a top layer 33% thicker than similar pads.



PlayMax is bringing new performance to playground surfacing... with PolyMax!







## SplashMax®

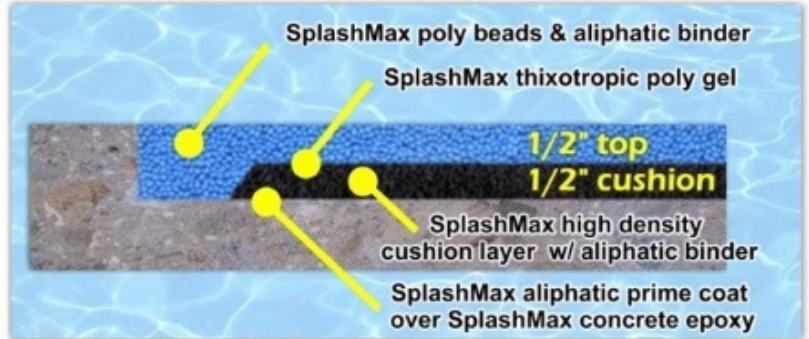
### POLY BEAD SPLASH PAD SURFACING

**SplashMax®** is our safe and fun splash pad surfacing. PlayMax has partnered with industry leader **PolySoft** to provide SplashMax® water play surfacing. Featuring high-quality polyolefin beads and crystal-clear aliphatic binder and our exclusive high-density rubber cushion layer, SplashMax® is designed to create a safe and fun water play experience for all.

The best thing about SplashMax® is the poly beads that create a much cooler surface than traditional rubber granules. This makes SplashMax® the natural choice for splash pads exposed to bare children's feet.

SplashMax® beads are sun resistant too – making colors vibrant for a longer time than ordinary splash pads.

With an industry leading 1/2" thick wearing surface for high durability, SplashMax® is America's quality leader, with a top layer that's 33% thicker than most pads.



IT'S THE COOLEST THING AROUND!



To verify product certification visit [www.ipema.org](http://www.ipema.org)

Available in a rainbow of fun colors, you really beat the heat with SplashMax!







## SOUNDMAX®

### GOOVIN' TO THE TUBE

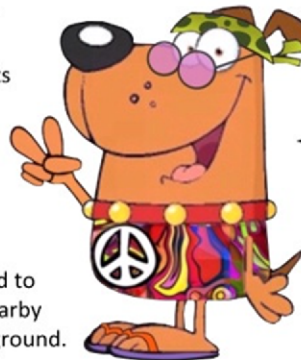
**SoundMax® Audio Game Towers** are an interactive and fun way to make safety surfacing an active part of the playground experience.

The SoundMax® Audio Game Tower System\* cleverly hides our exclusive Maxitron™ Sensors within the rubber surfacing surrounding the SoundMax® Tower. Sensors may be placed anywhere within a 15' radius from the unit, but must be located outside of equipment fall zones. When a child is over the Maxitron™ Sensor, sounds emit from the SoundMax® Audio Tower. Sensor locations may be completely hidden, or may be integrated into visual graphic elements within the surfacing.

SoundMax® produces a variety of fun sounds for kids using our exclusive sound processor unit. Inside, an adjustable volume control allows owners to match the audio level to that of the surrounding environment. SoundMax® includes a wireless remote control for turning the unit "on" at fun times, or "off" at times when silence is preferred. Alternately, SoundMax® can be switched on and off using a master power switch located at a nearby building.

SoundMax® works with poured synthetic surfacing such as our MaxPour®, MaxPour® Supreme or PolyMax® safety surfacing systems. Please consult with PlayMax for specific requirements of each system. PlayMax retains the final authority on sensor placement, which must conform to the ability of constructing within the system type, graphics, and outside of the fall zones of the intended play area. Please limit projects with graphics to the MaxPour® or MaxPour® Supreme systems only.

SoundMax® comes in 25 fun colors†, or shades can be matched to any color used on a playground (such as the post color on a nearby play unit) for perfect color continuity with the rest of the playground.



25 GROOVY COLORS TO CHOOSE FROM, OR MATCH COLORS TO NEW OR EXISTING PLAYGROUND EQUIPMENT !!

### Standard Colors

Yellow	Red	Lavender	Azure	Green	Olive	Brown	Black
Tropical Yellow	Pink	Blue	Teal	Chartreuse	Sand	Dark Brown	White
							<b>CUSTOM COLORS</b>
Orange	Plum	Cobalt	Forest Green	Lime	Beige	Light Gray	Custom

### Metallic Colors

Silver	Metallic Grey

† Chrome package available for indoor units only. Contact PlayMax for details.

\* Patents Pending







## SOUNDMAX® PIANO

### IN TUNE AND OUTA' SIGHT!

**SoundMax® Audio Piano Towers** bring the surfacing alive with a functioning major musical scale playground surface using eight (8) keys - CDEFGABC (do-rey-mi-fa-sol-la-ti-do).

Kids learn the keys while having fun - and it's great exercise too. Key notes make a realistic piano sound - so realistic that you'd believe there was a real "Concert Grand" on the playground! - but it's SoundMax®, so no fine tuning required!

Visually identical to our original SoundMax® Tower, the SoundMax® Piano Tower works using eight (8) white keys of piano key graphics built in to the playground surfacing using our exclusive Maxitron™ sensors. For appearances, black keys are also formed in to the surface, however only the white keys make piano notes.

Sensors may be placed anywhere within a 15' radius from the unit, but must be located outside of equipment fall zones. Inside, an adjustable volume control allows owners to match the audio level to that of the surrounding environment.

SoundMax® Piano works with poured synthetic surfacing such as our MaxPour® or MaxPour® Supreme safety surfacing systems. Please consult with PlayMax for specific requirements of each system. PlayMax retains the final authority on sensor placement, which must conform to the ability of constructing within the system type, graphics, and outside of the fall zones of the intended play area.

SoundMax® comes in 25 fun colors†, or shades can be matched to any color used on a playground (such as the post color on a nearby play unit) for perfect color continuity with the rest of the playground.



**YOU CALL THE TUNE -  
25 CLASSIC COLORS OR MATCH  
COLORS TO NEW OR EXISTING  
PLAYGROUND EQUIPMENT !!**

### Standard Colors

Yellow	Red	Lavender	Azure	Green	Olive	Brown	Black
Tropical Yellow	Pink	Blue	Teal	Chartreuse	Sand	Dark Brown	White
							<b>CUSTOM COLORS</b>
Orange	Plum	Cobalt	Forest Green	Lime	Beige	Light Gray	Custom

### Metallic Colors

Silver	Metallic Grey

† Chrome package available for indoor units only. Contact PlayMax for details.  
\* Patents Pending







## ECONOMAX™



### WARM UP THE BAND WITH ECONOMAX

She's not cute, she can't sing and dance, and she sure ain't pretty... But sometimes she's just the one you want to bring home to Mom. Meet **EconoMax**, our spin on the ever present bonded rubber mulch systems available on the market today. She's also thrifty... just don't call her cheap!

While we make no big claims about EconoMax, it has been used in a variety of playground and non-playground applications alike. And you keep asking for it.

Starting with quality mulched SBR tire rubber, we create EconoMax using our MaxPour aromatic polyurethane binder. Mulch rubber is available in several colors and is pre-coated with a colorful paint coating prior to being mixed with polyurethane binder and then applied to the project. This being the case, mulch rubber has two coatings - the color and the binder.

Because it is SBR tire rubber on the inside, we must point out that the coatings can and most likely will wear or weather off over time exposing black rubber. Also, since there is no wearing surface applied, EconoMax is susceptible to damage in ways regular poured-in-place rubber is not. EconoMax can, however, also be re-coated or repaired easily.

EconoMax is a great choice for tree wells and fill alongside conventional playgrounds, nature walk paths, ground cover and the like. And yes, it can be used for playgrounds. It's just not the performer that you would find on the other PlayMax systems, so keep your expectations low and you'll be a happy customer. "It is what it is," as they say.... call us for details.

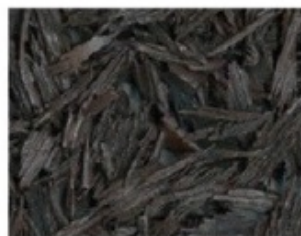
**EconoMax - No ordinary big pile of rubber mulch!**



Pigmented tire rubber bonded with poly binder



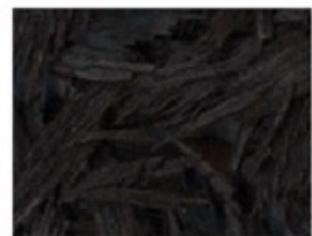
REDWOOD



CEDAR



CYPRESS



BLACK



3-COLOR MIX



CEDAR / REDWOOD



CYPRESS / CEDAR



REDWOOD / CYPRESS





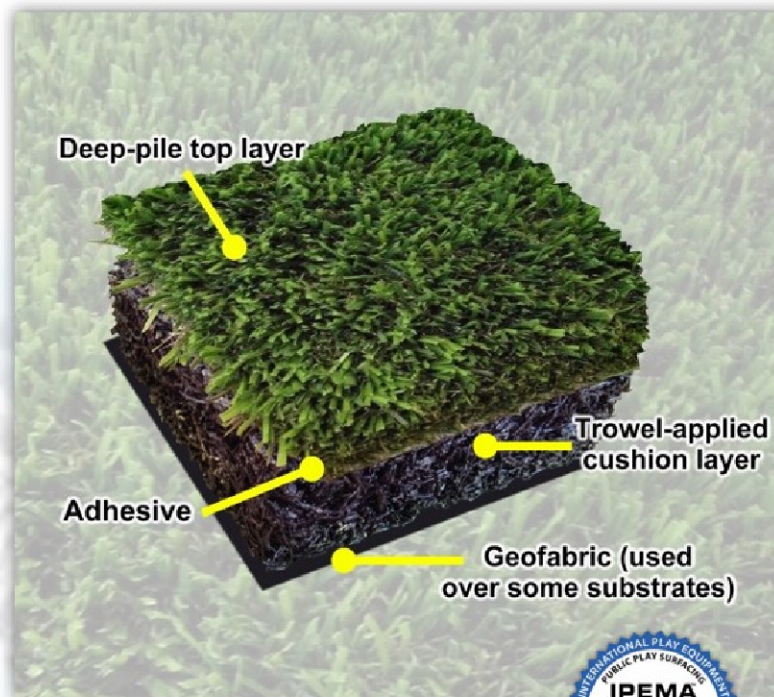
## PlayTurf™

### NEW GENERATION PLAY TURF

Play turf is safe turf when using our new generation surfacing by PlayMax. Our safe and fun PlayTurf™ is rated from 4' to 12' CFH, just like the rest of our PlayMax™ poured rubber systems. Using similar cushion layer technology, our PlayTurf™ system uses an adhered layer of high quality, deep pile synthetic turf to provide a natural appearing surface for kids to explore and have fun on.

The best thing is that we adhere our PlayTurf™ directly to the cushion layer, eliminating the messy sand or tire rubber granules commonly used to “weigh down” other synthetic turf systems. It costs a bit more, but we feel it is well worth it, giving you a system you can live with, and eliminating the tracking of tire rubber granules and sand into your building or walk areas.

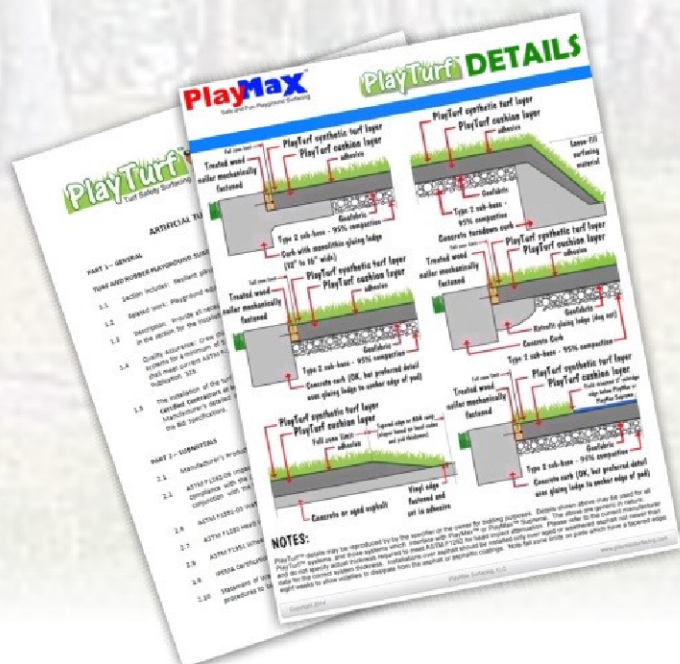
PlayMax is taking play surfacing to the next generation with PlayTurf.



To verify product certification visit [www.ipema.org](http://www.ipema.org)

### Specifier's Note:

Synthetic turf systems (including our PlayTurf™) will get trampled down with continued use due to the high traffic levels. For a more natural appearance, owners may rake up synthetic turf systems periodically to enhance the appearance of the playground surface.



NO MESSY SAND AND TIRE RUBBER GRANULES TO CLEAN UP EVERY DAY!

Max Says:







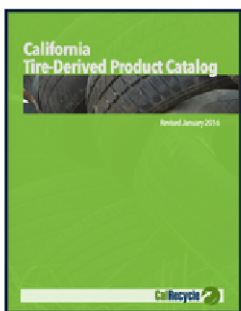
**Special Playground Surfacing designed to meet the requirements of California Cal-Recycle grant funding**

California is known for a lot of things – the beaches, the mountains, and endless sunshine. One thing we have here too is endless solid waste. Luckily for us, a lot of that is old tires.

To make use of these mountains of rubber, Cal-Recycle offers grants to local agencies for things like playground surfacing, but not just any type of tire rubber gets funded. **EcoMax** is our exclusive base layer designed to meet this requirement.

We can use our EcoMax base layer with our standard **MaxPour®** top layer, making the system **MaxPour® EcoMax**. We can also swap out any black granules with SBR tire rubber granules in the top layer to load the system with as much SBR tire rubber as possible for grant purposes.

**MaxPour® EcoMax is designed specifically for the grant requirements of Cal-Recycle. Please limit the use of MaxPour® EcoMax to Cal-Recycle grant funded projects only, and use our standard MaxPour® system for all other uses.**



Look for MaxPour® EcoMax in the new California Cal-Recycle Tire Derived Product Catalog, available online at the Cal-Recycle website:

<https://www.e-productcatalog.com/TDPCatalog/>







## PLAYMAX RAW MATERIALS

PlayMax provides a variety of raw materials for the purpose of repairing or modifying poured in place (PIP) surfacing. These materials may be used to repair virtually all poured in place systems which use EPDM or TPV color granules over an SBR (tire rubber) cushion layer.

Please contact us for a current ordering sheet at (951) 250-6039 or [cwolf@playmaxsurfacing.com](mailto:cwolf@playmaxsurfacing.com)



These materials may additionally be used in a variety of recreational purposes such as pathways, exercise areas, trailer mats, horse stalls and dozens of other non-playground applications. For complete playground systems, contact PlayMax directly, or make arrangements through an authorized PlayMax installer. PlayMax is not responsible for play areas not installed by PlayMax or one of our authorized installers.



### DOW Voramer MR1165 Aromatic Binder

DOW Chemical produces the finest binders used in the playground industry today. Versatile and strong DOW Voramer binders are a good choice when high performance is required. As an aromatic "standard" binder, some "ambering" will be observed, and is acceptable on most colors. Can be used on top or bottom layers.

**DOW**



### Accella H3168 Aliphatic Binder

Accella (formerly Marchem) is the quality leader when it comes to crystal-clear, specialty binders. Accella H3168 is used for a variety of applications from splashpads, to graphics, or simply to install light or pastel colors without the "ambering" typical of aromatic binders. H3168 is a crystal-clear, aliphatic binder, and will not amber.



### Rosehill TPV rubber granules

Rosehill TPV is the state-of-the-art rubber granule used in more playgrounds currently than any other rubber granule. TPV is visually identical to EPDM, but retains colors better. PlayMax stocks the 5 most popular colors. Other colors available by special order. Rosehill granules weight 53-55 lbs / bag depending on color. Can be used to repair or blend with any EPDM/TPV or SBR rubber.



### Accella H3608 Aliphatic Roll-Coat

Give new life to old, dry rubber surfacing pads with Accella H3608 roll-coat. Designed to be applied right out of the bucket (no thinning required), Accella H3608 is an easy choice for maintaining existing surfacing in the best possible condition. Accella H3608 locks in loose surface granules and gives oxidized surfaces a better appearance and durability. Accella H3608 is crystal-clear and will not amber.

### Black premium rubber granules

PlayMax premium black rubber granules may be mixed with any color TPV/EPDM or SBR rubber to match existing pads, or to create new work, walkpaths or for other creative uses.



### Playground Buffings - SBR rubber

Playgrounds use SBR tire rubber for cushioning falls. PlayMax playground buffings are an industry standard nominal 3/8" ++ sizing, and can be used to repair most playground surfacing base layers.

