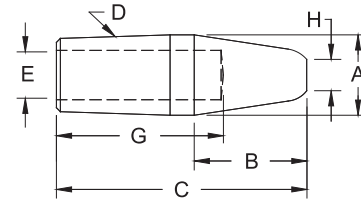
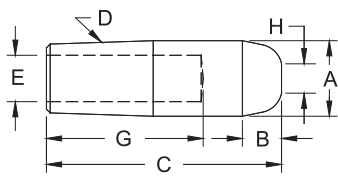


STRAIGHT ELECTRODES



DOME NOSE (B)

POINTED NOSE (A)



4 RW TAPER (D)

COMMON DIMENSIONS

4 RW TAPER (D)

RWMA Class 1	RWMA Class 2	RWMA Class 3	Nose Length B
1111	3111	5111	13/64
1112	3112	5112	1/4
1113	3113	5113	1/4
1114	3114	5114	1/4
1115	3115	5115	
1116	3116	5116	
1117	3117	5117	1/4
1118	3118	5118	
1119	3119	5119	
11112	31112	51112	1/4
11114	31114	51114	
11116	31116	51116	
11118	31118	51118	1/4

Face Dia. H	Major Dia. A	Water Hole Dia. E	Overall Length C	Hole Depth G
3/16	.482	9/32	1	5/8
			1-1/4	3/4
			1-1/2	1
			1-3/4	1-1/4
			2	1-1/2
			2-1/4	1-3/4
			2-1/2	2
			2-3/4	2-1/4
			3	2-1/2
			3-1/4	2-3/4
			3-1/2	3
			3-3/4	3-1/4
4	3-1/2			

RWMA Class 1	RWMA Class 2	RWMA Class 3	Nose Length B
1211	3211	5211	3/8
1212	3212	5212	3/8
1213	3213	5213	5/8
1214	3214	5214	3/4
1215	3215	5215	
1216	3216	5216	
1217	3217	5217	3/4
1218	3218	5218	
1219	3219	5219	
12112	32112	52112	3/4
12114	32114	52114	
12116	32116	52116	
12118	32118	52118	3/4

5 RW TAPER (D)

COMMON DIMENSIONS

5 RW TAPER (D)

RWMA Class 1	RWMA Class 2	RWMA Class 3	Nose Length B
1122	3122	5122	3/8
1123	3123	5123	
1124	3124	5124	
1125	3125	5125	
1126	3126	5126	
1127	3127	5127	
1128	3128	5128	
1129	3129	5129	
11212	31212	51212	
11214	31214	51214	
11216	31216	51216	
11218	31218	51218	
11220	31220	51220	
11222	31222	51222	

Face Dia. H	Major Dia. A	Water Hole Dia. E	Overall Length C	Hole Depth G
1/4	.625	3/8	1-1/4	3/4
			1-1/2	3/4
			1-3/4	1
			2	1-1/4
			2-1/4	1-1/2
			2-1/2	1-3/4
			2-3/4	2
			3	2-1/4
			3-1/4	2-1/2
			3-1/2	2-3/4
			3-3/4	3
			4	3-1/4
4-1/4	3-1/2			
4-1/2	3-3/4			

RWMA Class 1	RWMA Class 2	RWMA Class 3	Nose Length B
1222	3222	5222	1/2
1223	3223	5223	3/4
1224	3224	5224	3/4
1225	3225	5225	1-1/8
1226	3226	5226	
1227	3227	5227	
1228	3228	5228	1-1/8
1229	3229	5229	
12212	32212	52212	
12214	32214	52214	1-1/8
12216	32216	52216	
12218	32218	52218	
12220	32220	52220	1-1/8
12222	32222	52222	

*Electrodes of other tapers and alloys available upon request.