

# “BOO BOO BOO LIGHTS” HSS-09 HALLOWEEN STREET SIGN COLLECTION



CANVAS DESIGN BY KIMBERLY ANN NEEDLEPOINT  
STITCH GUIDE DESIGN & STITCHING BY KIMBERLY ANN NEEDLEPOINT  
DIAGRAMS BY KIMBERLY ANN NEEDLEPOINT

Photocopying of this stitch guide is invited.  
Production by Kimberly Ann Needlepoint.  
[WWW.KIMBERLYANNNEEDLEPOINT.COM](http://WWW.KIMBERLYANNNEEDLEPOINT.COM)

## THREAD: “BOO BOO BOO LIGHTS” HSS-09

<u>COMPANY</u>	<u>NAME</u>	<u>NUMBER</u>	<u>*QUANTITY</u>
KIMBERLY ANN NEEDLEPOINT	BOO BOO BOO LIGHTS	HSS-09	1
RAINBOW GALLERY	CRYSTAL BRAID	CR01	1
RAINBOW GALLERY	PETITE VERY VELVET	V629	1
RAINBOW GALLERY	NEON RAYS +	NP09	1
RAINBOW GALLERY	NEON RAYS +	NP07	1
RAINBOW GALLERY	NEON RAYS +	NP147	1
RAINBOW GALLERY	NEON RAYS +	NP141	1
RAINBOW GALLERY	PETITE VERY VELVET	V601	1

\*Please note recommended thread is based on expected usage. Individual-stitch technique/style may vary.

<u>ADDITIONAL TOOLS NEEDED:</u>
*SIZE 20 TAPESTRY NEEDLE
<u>RECOMMENDED TOOLS:</u>
STRETCHER BARS 9”X9”
BRASS TACKS
SMALL NEEDLEPOINT SCISSORS

## STITCH GUIDE: “TRICKER TREATERS CROSSING” HSS-09

<u>DESIGN AREA</u>	<u>THREAD</u>	<u>NUMBER</u>	<u>STRANDS</u>	<u>STITCH</u>	<u>NOTES</u>
WHITE BACKGROUND:	R.G.- CRYSTAL BRAID	CRO1		SERENDIPITY	
ORANGE BOARDER	R.G.- PETITE VERY VELVET	V629		SEE CHART	*MODITIFY AROUND CORNERS
PURPLE BOARDER	R.G.- NEON RAYS+	NP09		OBLONG STEPS	*MODITIFY AROUND CORNERS
PURPLE LIGHT	R.G.- NEON RAYS+	NP07		CHECKERED CROSS	
ORANGE LIGHT	R.G.- NEON RAYS+	NP147		CHECKERED CROSS	
GREEN LIGHT	R.G.- NEON RAYS+	NP141		CHECKERED CROSS	
BLACK AROUND LIGHTS	R.G.- PETITE VERY VELVET	V601		BRICK	
LETTERING: “BOO”	R.G.- PETITE VERY VELVET	V601		TENT	

**\*\*\*SHARE YOUR STITCHING AND FOLLOW KIMBERLY ANN NEEDLEPOINT ON INSTAGRAM!\*\*\***  
**@KIMBERLYANNNEEDLEPOINT**  
**#KIMBERLYANNNEEDLEPOINT #HALLOWEENSTREETSIGNS #FREESTITCHGUIDE**

## WHITE BACKGROUND: SERENDIPITY STITCH

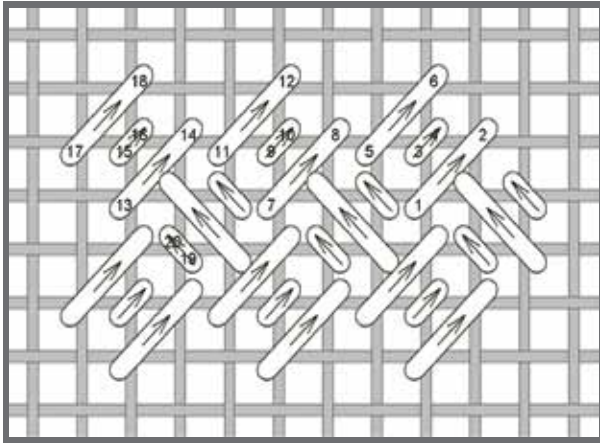


IMAGE KIMBERLY ANN NEEDLEPOINT

## PURPLE BORDER: OBLONG STEPS STITCH

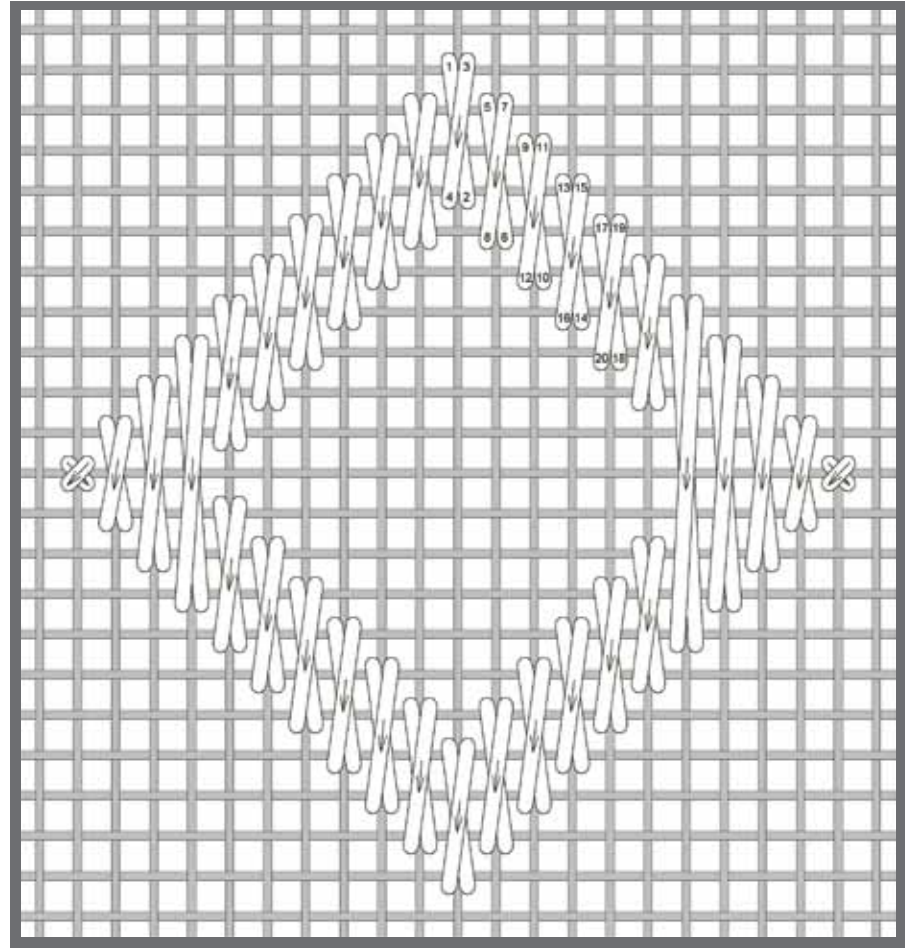


IMAGE KIMBERLY ANN NEEDLEPOINT

## ORANGE BORDER:

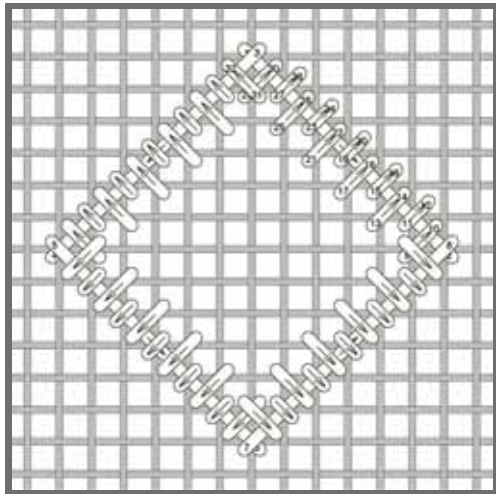


IMAGE KIMBERLY ANN NEEDLEPOINT

## LETTERING "BOO": TENT STITCH

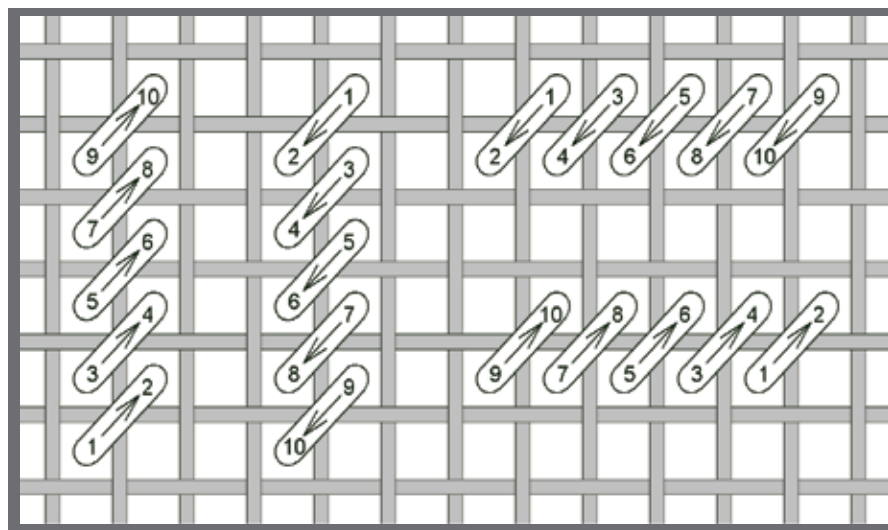


IMAGE KIMBERLY ANN NEEDLEPOINT

BLACK AROUND  
LIGHTS :  
BRICK STITCH

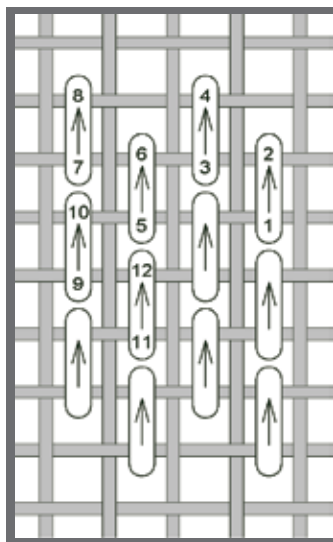


IMAGE KIMBERLY ANN NEEDLEPOINT

PURPLE, ORANGE &  
GREEN LIGHTS:  
CHECKERED CROSS  
STITCH

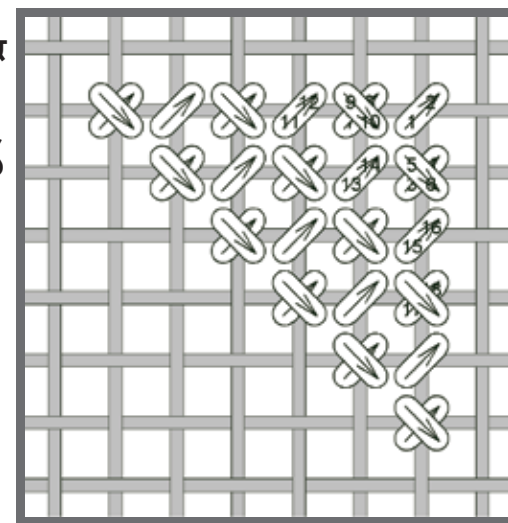


IMAGE KIMBERLY ANN NEEDLEPOINT