



Part #	Part Name	Qty.	Part #
EA900HC	Honda 4 Stroke Engine w/clutch	1	1
EA900H	Honda 4 Stroke Engine	1	1
RT600	Throttle Assembly	1	2
RL500*	Rattler Flex Hose	1	3
RL550*	Rattler Drive Cable	1	4
RL250	Rattler Vibrator Head Assembly	1	5
TL650	Shoulder Strap Assembly	1	6

\*Rattler flex hose and drive cable can be cut to specified length

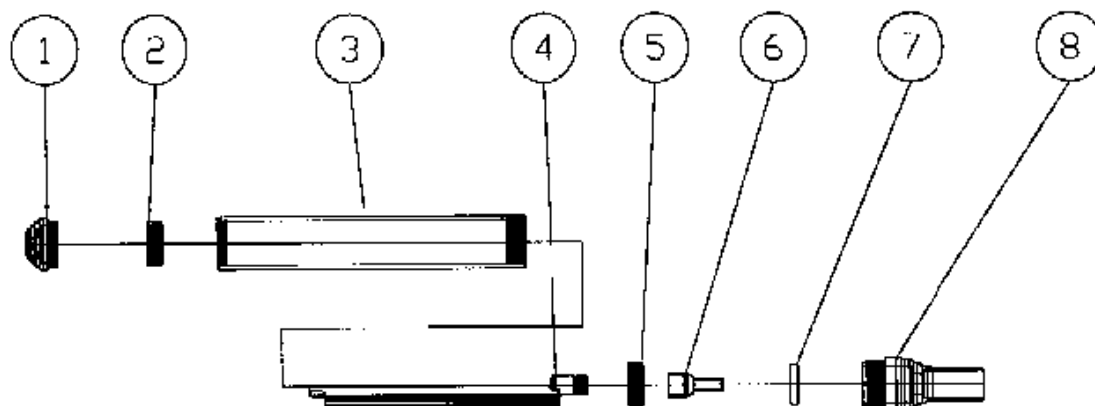
We now have a part called the Rattler Whip. This includes part# 3,4, &5.  
You can use your current Rattler engine and interchange the whips to get the desired length you need for the job!!

### Rattler Whip

Part#	Description	Part#	Description
RL304	4'Rattler Whip	RL310	10'Rattler Whip
RL305	5'Rattler Whip	RL311	11'Rattler Whip
RL306	6'Rattler Whip	RL312	12'Rattler Whip
RL307	7'Rattler Whip	RL313	13'Rattler Whip
RL308	8'Rattler Whip	RL314	14'Rattler Whip
RL309	9'Rattler Whip		

For pricing and a dealer near you, call Lindley Inc. @ 800-788-5997

## Rattler Vibrator Head Assembly



Part#	Part Name	Item#
RL0015	End Cap	1
RL0025	6003RS Bearing	2
RL0035	Vibrator Shaft Housing	3
RL0045	Vibrator Shaft	4
RL0065	Flex Shaft Connector	6
RL0075	Seal	7
RL0085	Flex Shaft Housing Connector	8
RL250	Vibrator Assembly Complete	1-8
TL052	Vibrator Shaft 202 Bearing	5

For pricing and a dealer near you call 800-788-5997

## **Rattler Hose and Cable Lengths**

<b>Rattler Length</b>	<b>Honda/ Robin 4 Stroke Hose</b>	<b>Robin 2 Stroke Hose</b>	<b>Cable Length</b>
<b>4'</b>	<b>28.25"</b>	<b>27.25"</b>	<b>40"</b>
<b>5'</b>	<b>40.25"</b>	<b>39.25"</b>	<b>52"</b>
<b>6'</b>	<b>52.25"</b>	<b>51.25"</b>	<b>64"</b>
<b>7'</b>	<b>64.25"</b>	<b>63.25"</b>	<b>76"</b>
<b>8'</b>	<b>76.25"</b>	<b>75.25"</b>	<b>88"</b>
<b>9'</b>	<b>88.25"</b>	<b>87.25"</b>	<b>100"</b>
<b>10'</b>	<b>100.25"</b>	<b>99.25"</b>	<b>112"</b>
<b>11'</b>	<b>112.25"</b>	<b>111.25"</b>	<b>124"</b>
<b>12'</b>	<b>124.25"</b>	<b>123.25"</b>	<b>136"</b>
<b>13'</b>	<b>136.25"</b>	<b>135.25"</b>	<b>148"</b>
<b>14'</b>	<b>148.25"</b>	<b>147.25"</b>	<b>160"</b>
<b>15'</b>	<b>160.25"</b>	<b>159.25"</b>	<b>172"</b>
<b>16'</b>	<b>172.25"</b>	<b>171.25"</b>	<b>184"</b>

**When measuring your Rattler hose when assembled, the length of the hose will be about 3 inches shorter than the hose lengths above. This is because about 1 ½" of the hose goes up into the engine end and about 1 ½" goes into the vibrator head. The hose length you measure will help you determine the Rattler Length that you have. You can then just call us and tell us that you need a Honda or Robin Hose for a ?' Rattler. Example: You measure your hose and find that it is 25.25 inches when assembled. This means you have a 4' Honda Rattler. When you call and tell us you need a 4' Honda hose, we will cut the hose to a length of 28.25 inches.**

**For pricing and a dealer near you, call Lindley, Inc. @ 800-788-5997**