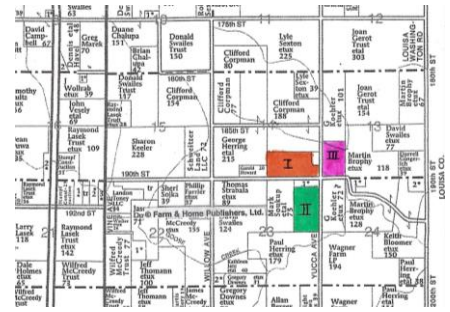


FARMLAND-MACHINERY AUCTION

We will offer for auction the following Farmland located 1879 Yucca Ave, Ainsworth, IA which is 2 miles South of the Highland School on Old Hwy 218 (Vine Ave), then 2 miles East on 190th St. or 1 mile East of the former Haskins Feed Mill on G-36, then 3 miles North on Yucca Ave.



Friday – Nov 8, 2019 – 9:00am

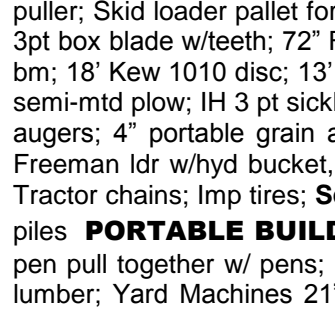
198 ACRES M/L - 159.64 acres enrolled in CRP

Washington County – Highland Twp - Section 13, 14 & 23

TRACT I: 76 acres m/l - TRACT II: 70 acres m/l - TRACT III: 52 acres m/l

REAL ESTATE TO SELL AT 10:00 am.

PERSONAL PROPERTY SELLING AT 9:00am



TRACTORS – FARM MACHINERY: IH 234 hydro FWA, 3 pt, pto, SN J1194; 1965 JD 3020 D, ps, nf, dual hyd, hrs unknown, 15.5-38; Ford 3000, gas utility tractor w/ 3064 hrs, 3 pt, 13.6-28, 3 sets of rear wheel weights, w/ Ford HD loader; 1949 IH-H, w/belt pulley, rear wheel whts & 12.4-38; 1953 JD 50, roll-a-matic, after market 3 pt, needs repair; '37 or '38 JD-B w/flat spoke rims-dismantled; Ford 800, wf tractor-dismantled; Mustang 320 skid loader, gas eng, hydro needs repair; JD 20 series frt wt set; Ford 8N frt tires/rims; IH 3082 -3pt backhoe w/ 16" bucket; Lackender skid loader tree puller; Skid loader pallet forks; JD 265 -3pt disc mower; 6½' Woods 84-3pt rotary mower; 7' Land Pride & 8'-3 pt blades; 5' King Kutter 3pt box blade w/teeth; 72" Farm King 3 pt finish mower; Worksaver 3 pt hyd driven seeder; Fimco 50 gal, NOS-3pt, Cat I sprayer w/10' bm; 18' Kew 1010 disc; 13' & 16' JD 3pt field cultivators; 9' MC & 7'JD 3pt flail mowers; 10' pull type chisel plow; 17' hayrack; JD 4 bott semi-mtd plow; IH 3 pt sickle mower; 3 pt bale stabber; Pull type bale/ stack mover; JD 4R frt mt cult; 2-3pt 4R cults; Older 6" & 8" grain augers; 4" portable grain augers; Bin level grain spreader; Pickup fuel tank w/ele pump **Older equip:** JD 3pt rotary hoe, JD disc, Freeman ldr w/hyd bucket, 36'x10" elevator w/ gas eng, Running gear w/box & hoist; Front mt buzz saw, IH, Oliver & Ford weights; Tractor chains; Imp tires; **Scrap items:** IH 400-4R planter w/DF; 48' trailer house; Artsway grinder mixers, Water wagon, Ford disc, Iron piles

PORTABLE BUILDINGS - LIVESTOCK: 11'X28'x7'6"height, near new, port building w/36" double walk thru doors, vinyl siding & metal roof; 20'x24'-10 pen pull together w/ pens; Pipe gates; Ritchie hog water & parts; Stock tank; LB White heater; Pig feeders & pans; Fence anchors; Steel posts; Barbed wire; 2" lumber; Yard Machines 21" mower; Agri Fab & Craftsman seeders; Eddy-Boy 26" tiller; 42" grass catcher; Kaw leaf blower; Grass seeder; Gas weed trimmer; Metal 4 wheel chore wagon; 4' lawn roller; 25 gal 3 pt sprayer w/high flow 12V pump; Wheel Horse & other lawn trailers; 16" ele hedge trimmer; Lobbers; Shop broom; Tree trimmer; Sky chair; Garden tools, etc; Wheel barrow; Live animal & mole traps; Sump pump; Flower & garden decor; Metal folding tables; Little Tikes car



KEIFER BUILT CARGO & BUMPER HITCH TRAILERS - GARDEN PULLIN TRACTORS – LAWN/ GARDEN: 1999 Keifer Built bumper hitch trailer w/ 3500lb axles cargo doors, diamond plate floor, w/built in electric, Craftsman tool box, clamp down floor rail & ramps; 16'x6'5" tandem axle bumper hitch trailer w/ ramps; **Garden Pullin tractors:** The following 4 tractors have kill switches & wheelie bars-(Simple Cub)-Simplicity HD Onan 2 cyl-24 hp, gear drive w/Dick Cepek 26x12.00/12" w/alum. rims; (Little Green Giant)-JD 110 Onan 24 hp, gear drive w/Temco Pit Bull tires & steel off-set 12" rims; (Green Team)-JD 110 Kohler 12 hp, belt drive w/Titan 26x12.00/12 tires; JD 210, Kohler 14 hp, belt drive w/ Firestone 26-12 flotation bar tires; (Taz) JD 212 Onan 24 hp, belt driven w/26-12 tires; Lawn mower wts; **New tires:** Tru Power (Titan) 26x12.00-12 tires w/ alum rims, Firestone 26x12.00-12 flotation w/steel rims, Firestone 26x12.00-12, Pit Bull 26x12.00-12 w/ alum rims; Case 448 lawn tractor-no engine; **Parts lawn tractors:** JD: 110, 112, 140, 180, 210 & 212, Cub Cadet: 72, 102, 122, 149 Hydro & 1200, Craftsman, Snapper 1650; Assorted JD mower decks; JD 42" & 55" hyd lift lawn tractor blades; Kohler & Wis motor parts; Many Lawn tractor parts engs



1997

FORD RANGER 4X4 PICKUP - 1990 FORD AREOSTAR VAN – 1979 FORD F150 - V & FLATBOTTOM BOATS – 2004 YAMAHA 660 RHINO

4X4 - 2008 LINHAI TALON 4 WHEELER – 1967 PLAYMORE CAMPER – RECREATIONAL: 1997 Ford Ranger XLT, 4x4, standard trans, 4 spd-4.0-6cyl eng, 194,700 mi, ext. cab, cloth bucket seats, tilt, 6' box w/diamond plate tool box, low mi on tires; '79 Ford F150, 4x4, straight 6 cyl, 4 spd, flatbed w/ele over hyd hoist, w/NOS doors; '90 Ford Aerostar XLT van, V-6, 5 spd, 80,918 mi, rear air/heat, 7 pass-4 bucket & 1 bench cloth seats, dark blue; 11' semi-V bottom alum boat w/trailer; 14'x54" Ouachita alum flat bott boat w/homemade trailer; 12' Duracraft flat bott boat; 2 Minnkota trolling motors; Fish TV finder; Ocean fish rod reel; Floating fishing light; Zebco, Sportsfisher, Penn, Shakesphere, etc reels; Ice auger; Battery lantern; **2004 Yamaha 660 Rhino 4x4,** w/ dump box; **2008 Linhai Talon Model 8264L-3,** 4x4, 4 wheeler, auto trans w/reverse, liquid cooled (American Sportworks); Ever Ride Warrior 25 hp zero turn mower, 715 hrs, 60" deck; Alum. 4 wheeler ramps; 1967 Playmore 11' pull camper w/LP stove, ice box & water tank; 2 person paddle boat; Globe-Stimpson meat band saw w/SS sliding table; Sausage stuffer; Meat saws & slicer; Robbins & Myers 1/3hp meat grinder; Tent; Kerosene space heaters; Weber gas grill; Volleyball net



PRIMITIVES: JD & IH steel wheel hay rakes; JD steel wheel gear; McCormick Deering hand crank corn sheller; 3 pt potato plow; Push garden plow, cult & planter; Wood burning kitchen cook stove; Wood heating stove; Steel wheels; Galv. wash tubs; Chicken feeders/waters; Phillips 66, Imperial & Standard Oil 5 gal gas cans; 2-SS milk pails; Keen Kutter nail puller; Buzz saw blade; 1& 2 man saws; Sleds; 3-4tine forks; Corn planter stakes; Live fish trap; Porcelain light fixtures; 4 pane windows; Roll of check wire; Bale forks; Grocery cart; Joseph Dvorak flat top trunk; Sewing rocker; Jewelry; Remington Rand typewriter; Vintage Hohner accordion; Copper boiler; Child's oak rocker; High chair; Blue canning jars; Hometown, Johnson's & Swaner milk bottles; Medicine-the Mother's Friend & other bottles; Zinc lids; Aladdin lunch box; Firestone & Stewart upright radios; Slaw cutter; GE fan; Cloth sacks: Masco, CR Hawkeye Brand, Brenneman's Seed-IC, Eagle Seeds, Red Comb Chicken Mash; Viewmaster; 3 gal Western crock & jug; Meat grinder; Brownie camera; Coronado radio; 2 red Chromecraft dining chairs; Victrola, Victor & Imperial phonographs

SHOP EQUIPMENT - TOOLS – SAFE: 22'X28'X23' Halls Safe & Lock Co- Cincinnati & Chicago safe; Cummins metal band saw; Craftsman Commerical 30" metal lathe w/ tooling; The Lodge & Davis 30" metal lathe w/ accessories; Brake drum lathe; Value Craft 12"x37"-5 spd wood lathe & tooling; Craftsman 4" jointer; LP cutting torch w/tanks & cart; Torch head set; 5000lb 12 volt winch; Delta 10" contractors table saw; Craftsman 12" band saw/sander; King 16 spd upright drill press; Guardian 5 spd drill press; 6" HD vise on stand; Iron Horse 6.5 hp-90PSI upright air comp. w/60 gal tank; Parts washer; 10 drawer Craftsman tool chest; Craftsman tool box; Porta Cable sawzall & brad nailer; Ind.1000 handy power washer; 24' Louisville ladder & 24' alum ladder; 6' fiberglass step ladder; Older port air compressor; Milwaukee hole saw kit; Makita chop saw; Craftsman 6" bench grinder; 6"/9" disc sander; 90% Sawzall drill; Mikita angle grinders; Bosch 3 belt sander; Lectro 8" HD circular saw; **DeWalt:** 12V Lithium ¼" impact drill, Ele. impact, circular 5½" saw; Drill bits; Wood chisels; Soldering equip; Cobbler set; Astroline 2T chain hoist; Jumper cables; Log chains; 2T floor jacks; Measuring wheel; Welding, C & wood clamps; Hand tools; Deep sockets; ½, 3/8" & ¾" sockets / ratchets; Impact sockets up to 1¼"; ½ " Standard/metric torque wrenches; Combo wrenches up to 2"; Craftsman ½" drill; Air dremel tool; Ramset gun; ¾" breaker bar; Jump start; ½" & 3/8" air wrenches; 3/8" 90% air wrenches; Bosch grinder; Pipe wrenches; Gear pullers; 28 letter punch set; 2 battery chargers; Valve spring compressor; Tire pluggers; Roto zip; Air hammer set; Electrical supplies; Bolts & bolt bin drawers; Carbs for Onan; Tie down straps; Mini wood planes; B&D Kwikset installation kit; B&D paint sprayer; Poulan 14" chain saw; Portable cement mixer w/ele motor; Cement & drywall tools; Surveyors measurer/ tripod; Miller Falls wood plane; Tent puller; Creepers; Slate cutter; 6x1x6 sod staples; Tarps; Free standing engine hoist frame; Factory: 2'x3' shelf units on castors, metal racking & push cart; 2-18



drawer metal parts bins; 2-Borg Warner Tune up wall cabinets; Welding table; 5 paint scaffold sections; Pallet, ladder, scaffold & roof jacks

HOUSEHOLD FURNITURE – KITCHEN & MISC: Signature 15 cu. ft chest freezer; Haier apt. size refrigerator; Model SL14 chair lift w/ 13'4" straight run; Soleus 110-6100 btu window AC; 2 Lazy Boy brown & other recliners; Oak gliding rocker; Drop leaf dining table; Mahogany Epworth Piano; Metal framed hall seat; Meade Model 14EGDH telescope w/tripod, lenses & control; Knee hole desk; Hoover vac; Rocking chairs; Kings Pool ball cabinet & cues; 2-2drawer file cabinets; Wood shelves; Walnut folding step stool chair; Utility step stool & carts; MW stereo; Lifestyler 600 treadmill; Total Bodyworks 5000; Body Solid weight machine; Sears typewriter; Lunch boxes; Microscopes; Children's books; Office supplies; Folding chairs; Infared electric stove-4500btu-NIB; Aqua Still distiller; Fans; Lamps; '50's-'70's records; Tractor radio clock; Farmall F-20 print; Deer print; Cowboy boots; Linens; Corningware; Crock pot; 6 qt cookware; SS kettle; 30 cup coffee pot; Pressure cooker; Bakeware; Tupperware; Glassware; Ele ice cream freezer; Utensils; Canning jars; Christmas tree & decor; Dart board; Kids farm toys; Radio control Lamborghini; Luggage



WALTER & DORIS KROTZ: OWNERS

Attorney: Craig Davis, 211 W Wash, Washington, IA 52353 **Web:** duwasauction.com **Terms:** Cash or Ck w/ID **Lunch:** Liberty Hill Catering

Auctioneer: Dwight Duwa - 319-646-6775 Not responsible in case of theft or accidents