


Easter

Additional Easter is available on the following pages: Chicks & Ducklings, Easter Baskets, Easter Bunnies, Easter Eggs, & Easter Trees

Item Number	Description	Size (Inches)	Bisque
CPK-766	 <p>Lamb Pulling Cart</p>		13.50
C-3087, 3141	 <p>Lamb Lantern (Candleholder or Light)</p>	5 1/2 Wide	26.10

A-1300-3,
44-48



Easter Country Cabin Light

116.90

A-1300

Country Cabin Oval Base

Base: 15 1/2
Long;
Building: 14
Wide; Roof:
14 1/8 Wide

75.00

A-1344

Mr. & Mrs. Bunny

5 3/4 Tall &
5 5/8 Tall

16.80

A-1345

Bunnies Painting Egg

4 1/2 Tall

8.40

A-1346

Bunny with Chick & Bunny for Chimney

4 1/8 Tall &
3 1/4 Tall

8.40

A-1347

Carrots & Berries for Wall Décor & Kettle

2 5/8 Tall &
2 1/4 Tall

6.00

A-1348

Easter Egg with Flowers

3 1/4 Tall

8.40

CPK-1432,
1464-9

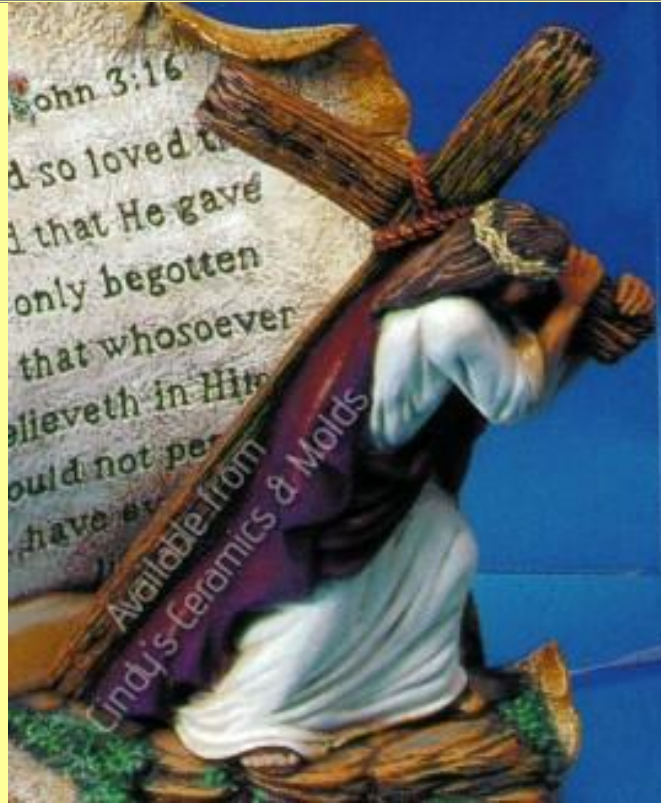


Bunny Village

72.20

CPK-1432	Easter Village Base		35.00
CPK-1464	Double Bunny Houses	7 Tall	8.40
CPK-1465	Small Bunny House	5 1/2 Tall	5.40
CPK-1466	Five Bunnies	3 Tall	5.40
CPK-1467	Four Bunnies	3 Tall	4.80
CPK-1468	Tree	7 1/2 Tall	8.40
CPK-1469	Accessories to Bunny Village	2 Long	4.80

CPK-2338



6 1/2 Tall

12.50

Jesus Carrying the Cross

DM-600A,
605B



6 1/2 Deep by
14 Wide

75.00

Easter Bunny Village Windowsill/ Mantle Setter (accessories available for additional holidays!) Note: Needs DM-1016 for Easter!

DM-1016	 <p>Easter Accessories for DM-600A/ 605B Village Windowsill/ Mantle Setter</p>	<p>Village Bunnies/ Pieces average 2 1/2 Long</p>	<p>8.00 (set)</p>
SK-471	 <p>Four Easter Ornaments/ Magnets: Bunny, Chick, Lamb, & Egg</p>		<p>3.00 Each 10.00 set</p>
A-312	 <p>Easter Lamb Ornament</p>	<p>3 5/8 High</p>	<p>3.50</p>

D-904, 962
to D-967



"Sweet Tot" Lamb Set (with two sections of fence)

71.60

D-904

Brick & Rail Fence (Two Sections Shown in Picture Above)

10 Long

10.40 per
section

D-962

"Sweet Tot" Lamb Sitting

5 1/2 Tall

10.10

D-963

"Sweet Tot" Lamb Crying

5 1/4 Tall

10.10

D-964

"Sweet Tot" Lamb Flap Down

6 3/4 Tall

10.10

D-965

"Sweet Tot" Lamb with Basket

7 Tall

10.10

D-966

Six Small Butterflies

1 Long

3.60

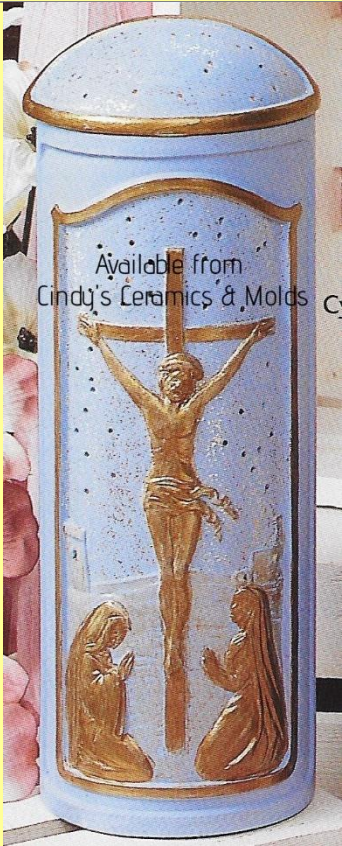
D-967

"Sweet Tot" Lamb Accessories

2 Long

6.80

L-2314,
2315



9 Tall by
3 1/2
Diameter

10.00

Crucifixion Light



x= Not Available

D-1743

3 Diameter

4.70

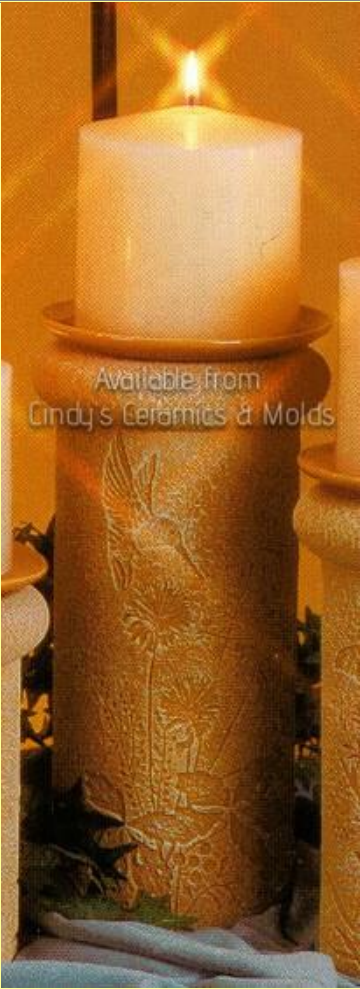

Votive Candle Cup for Meadow Impressions Series (Shown on Woodland Impressions- see "Garden" page for those items)

D-1744

Oil Lamp Holder for Meadow Impressions Series (shown above)

3 Diameter

4.70

D-1834	 <p>Available from Cindy's Ceramics & Molds</p> <p>Meadow Impressions Large Vase/ Candleholder/ Lamp (shown with Optional Candle Dish. Other optional insert types are available)</p>	11 High	21.60
D-1837	Optional Candle Dish for Impressions Series (shown above on Meadow Impressions Candleholder)	5 1/2 Diameter	6.10
Nan-218	 <p>218 Available from Cindy's Ceramics & Molds</p> <p>Lambykins Standing</p>		10.00

W-910	 <p data-bbox="337 898 1107 936">Easter Ornaments/ Magnets/ Pins (set of eight pieces)</p>	1 1/2 Tall to 2 Tall	4.00 set
WH-1840	Girl Easter Mouse		15.00
WH-1841	Boy Easter Mouse		15.00
H-2938, 2940	 <p data-bbox="363 1955 1081 1988">Tulip Candle Luminary (or Air Freshener Holder)</p>	7 3/4 Tall	14.00

6 NEW Colors...

are moving
of Rich

Available from
Cindus Ceramics & Molds

Coloramics Molds

6 NEW Colors...

are moving
of Rich

Available from
Cindus Ceramics & Molds

Coloramics Molds

6 NEW Colors...

are moving
of Rich

Available from
Cindus Ceramics & Molds

Coloramics Molds

6 NEW Colors...

are moving
of Rich

Available from
Cindus Ceramics & Molds

Coloramics Molds

Easter Bunny House with Tree

n' Bunnies

ES FR
MATE PALE



Easter Bunny House (No Tree)

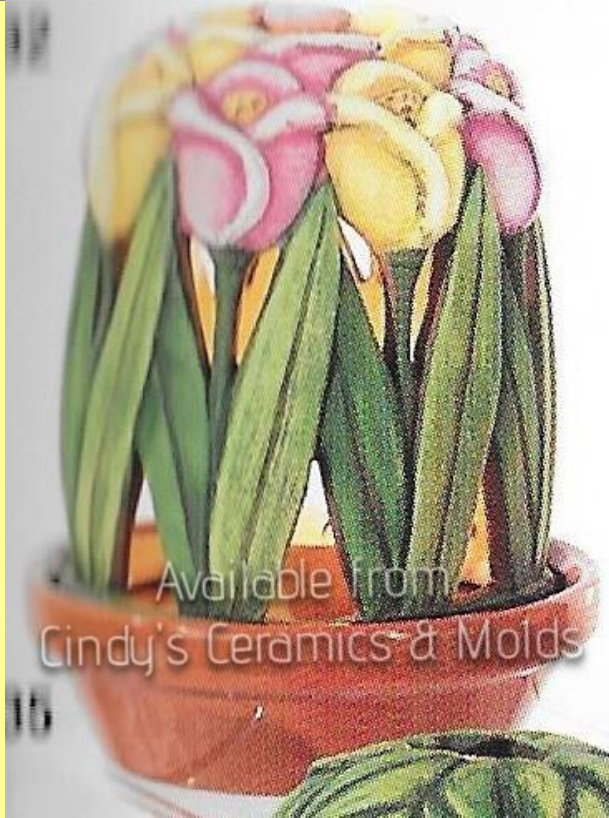
C-4076,
4134, 4135

125.00

C-4076	Large Easter Bunny House	15 1/2 Tall by 18 Wide by 7 Deep	110.00
C-4108	Tree for Bunny House		7.50

C-4134	Bunny & Flower Pots	Wheelbarro w Bunny: 3 1/4 Tall x 4 Long x 1 1/2 Deep; Round Flower Pot: 2 1/2 Tall by 1 1/2 Diameter; Rectangle Flower Pot: 2 1/4 Tall by 2 1/4 Wide by 1 1/8 Deep	7.50
C-4135	Playing Bunnies	Painter Bunny: 2 3/4 Tall by 3 1/2 Wide by 1 1/2 Deep; Sleeping Bunny: 1 1/2 Tall by 4 1/4 Wide by 2 Deep; Chimney Bunny: 4 Tall by 2 3/4 Wide by 2 1/2 Deep	7.50

C-4032/5



Tulips: 4 1/4
Tall by 4
Diameter;
Tray: 4 1/2
Diameter by
1 1/2 High

15.00

Tulip Luminary (Candleholder or Light)

G-11090



13 Tall

35.00

Bunnyville (All Pieces Shown are Included)

S-522, 527,
545-549



80.70

Easter Village
Village Trees

S-522

8 Tall

10.50

Village Base

S-527

17 Long by
18 Wide

27.00

Bunnyville Windmill

S-545

11.20

Bunnyville Carrot House

S-546

8.50

Bunnyville Egg House

S-547

8.50

Bunnyville Cabbage House

S-548

8.50

Bunnyville Egg Tree

S-549

6.50

Windmill & Base

S-545, 841

18.40

Carrot House & Base

S-546, 841


15.10

S-1557



Large Sleeping Lamb

19.80

S-1559	 <p>Available from Cindy's Ceramics & Molds</p> <p>1559</p>	20.40
	Large Laying Lamb	
VIP-1672 to 1681	 <p>Available from Cindy's Ceramics & Molds</p> <p>668 1680 1675 1672 1681 1677 1679 1678</p>	75.00
	Easter Bunny Village	
VIP-1672	Standing Egg House	8.00
VIP-1675	Sitting Egg House with Smokestack	8.00
VIP-1677	Sitting Egg House	8.00
VIP-1678	Three Small Bunnies	6.00
VIP-1679	Four Small Bunnies	8.00
VIP-1680	Standing Egg House with Dormirs	8.00
VIP-1681	Easter Bunny Village Base	29.00