

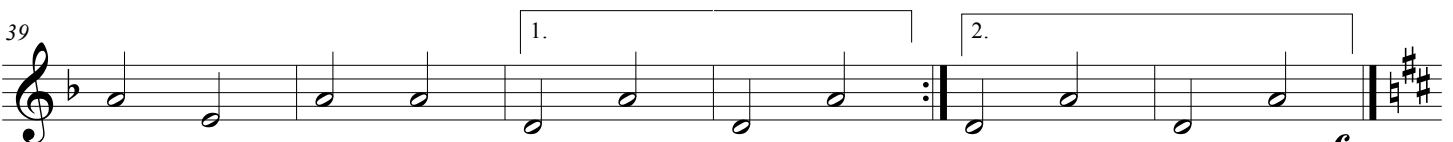
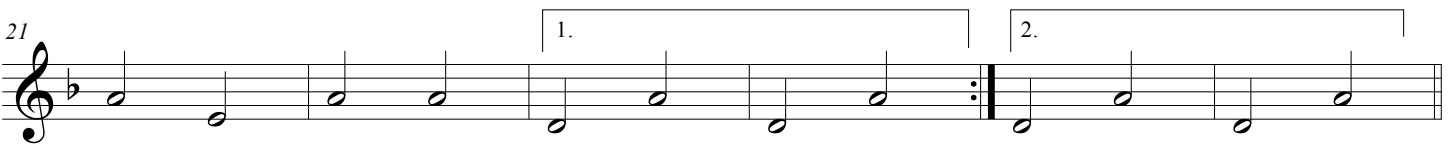
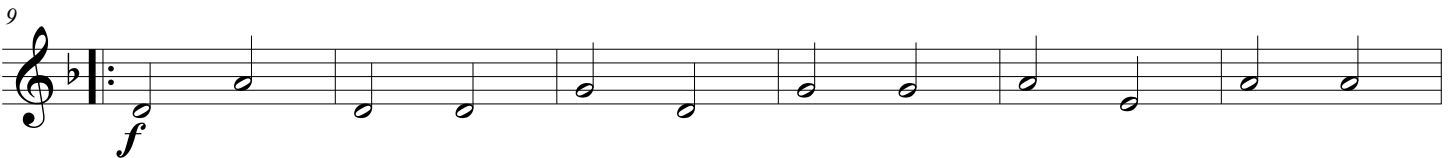
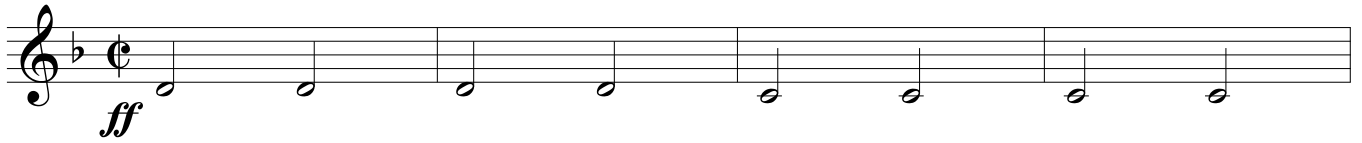
BAIRRO DA MADRE DE DEUS

Bass Clarinet

Portuguese March

Arthur Lemos


$\text{♩} = 128$



f

2 Bass Clarinet

BAIRRO DA MADRE DE DEUS

45  Trio

A musical staff in treble clef with a key signature of two sharps (F# and C#). It contains seven measures of music, each with a half note.


52


A musical staff in treble clef with a key signature of two sharps. It contains seven measures of music, each with a half note.

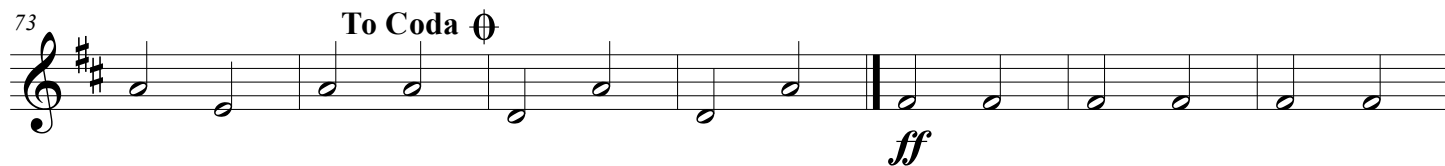
59

A musical staff in treble clef with a key signature of two sharps. It contains seven measures of music, each with a half note.


66

A musical staff in treble clef with a key signature of two sharps. It contains seven measures of music, each with a half note.

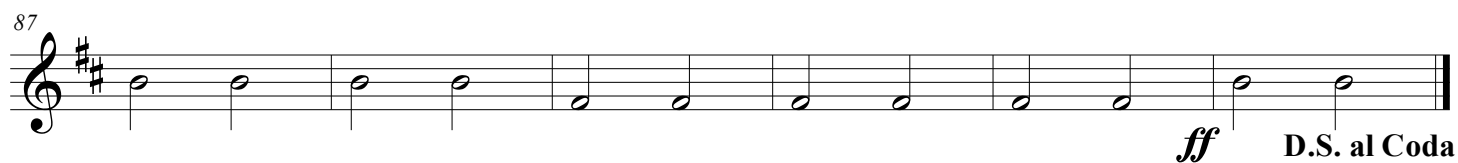
73 To Coda 

A musical staff in treble clef with a key signature of two sharps. It contains seven measures of music, each with a half note. A double bar line is placed after the fourth measure, and the word *ff* is written below the staff.

80

A musical staff in treble clef with a key signature of two sharps. It contains seven measures of music, each with a half note.

87

A musical staff in treble clef with a key signature of two sharps. It contains six measures of music, each with a half note. A double bar line is at the end of the sixth measure. The word *ff* is written below the staff, and the text "D.S. al Coda" is written to the right.

93  Coda

A musical staff in treble clef with a key signature of two sharps. It contains six measures of music, each with a half note. A double bar line is at the end of the sixth measure.