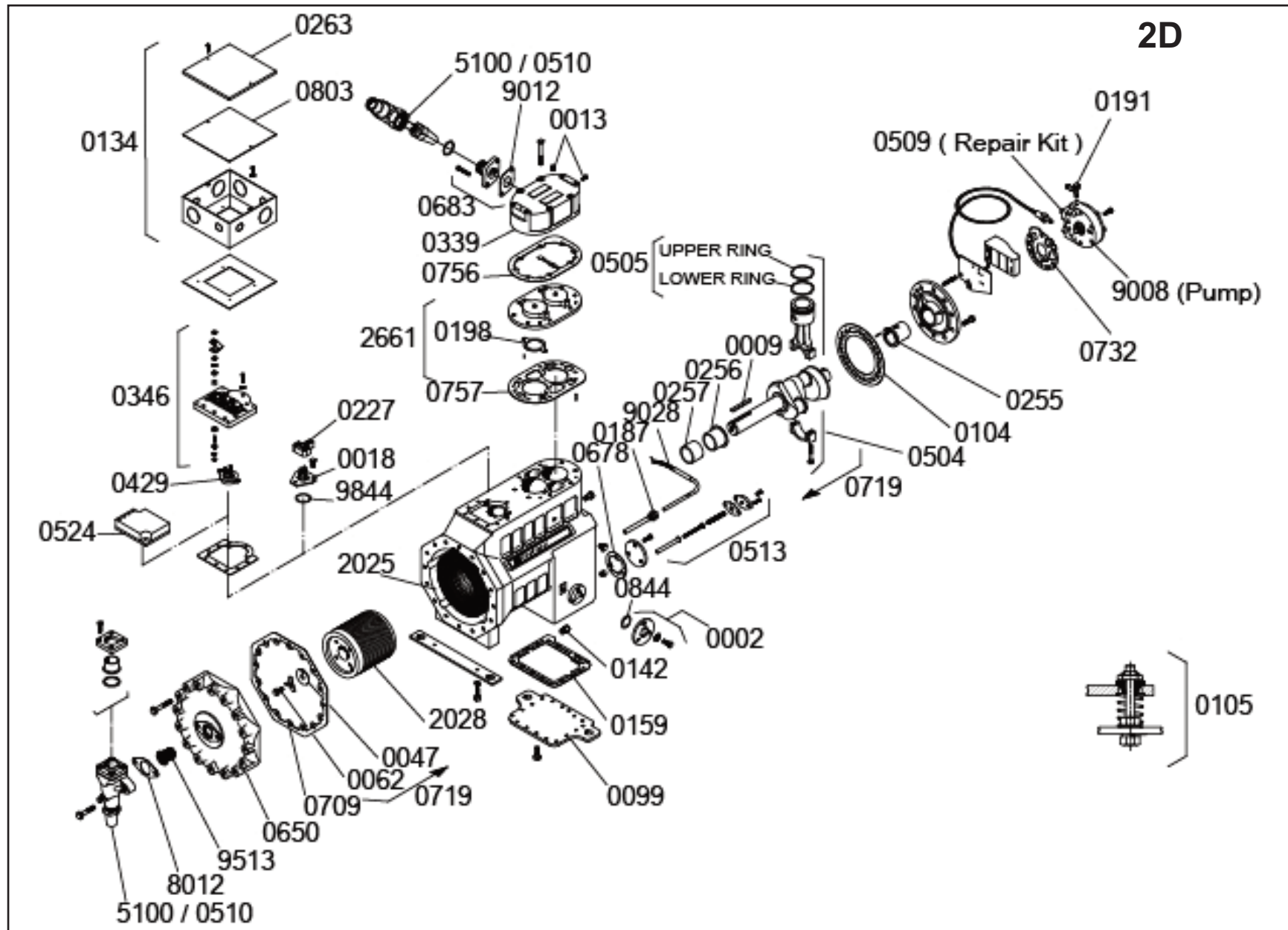


2D



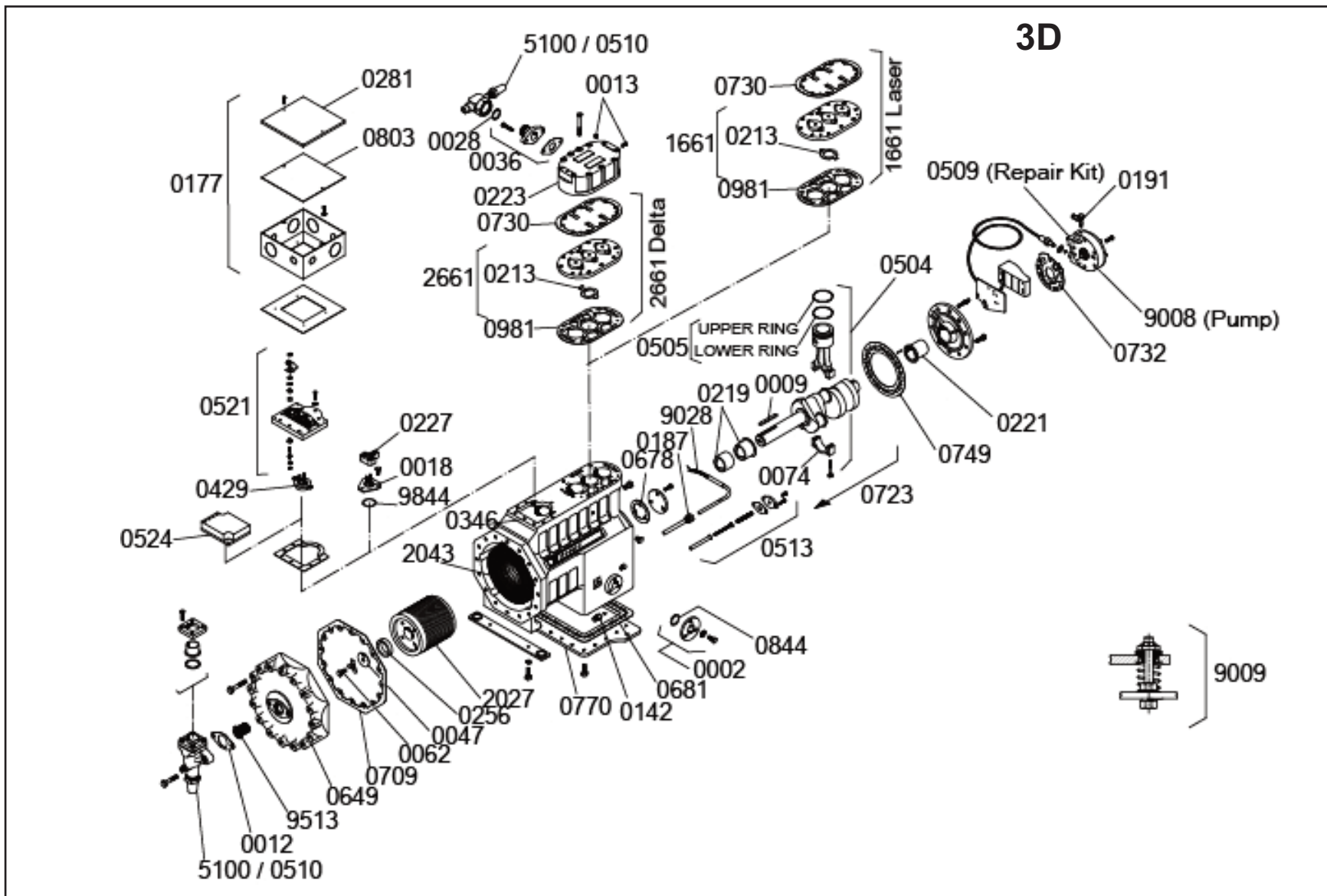
Ref. No.	Description	Part No.	Compressor Model														
			2DA3	2DA8	2DAJ	2DB3	2DB8	2DC3	2DC8	2DCJ	2DD3	2DD8	2DF3	2DF8	2DL3		
0002	SIGHT GLASS KIT	998-0002-02	1	1	1	1	1	1	1	1	1	1	1	1	1	1	
0009	KEY-CRANKSHAFT	075-0009-00	1	1	1	1	1	1	1	1	1	1	1	1	1	1	
0013	SCREW-HEX HD CAP	100-0013-48	2	2	2	2	2	2	2	2	2	2	2	2	2	2	
0018	TERMINAL-FUSED CLUSTER	521-0018-00															
	0300 - 030E / TFC / TFD / TFE												1	1			
	0400 - 040E / TFC / TFD / TFE																1
	0500 - 050E / TFC / TFD / TFE			1			1		1	1	1	1	1	1			
	0600 - 060E / TFC / TFD / TFE			1	1		1	1									
	0750 - 075E / TFC / TFD / TFE			1		1											1
	0300 - 0500 / CFB		1					1					1				
0047	WASHER-ROTOR	102-0047-02	1	1	1	1	1	1	1	1	1	1	1	1	1	1	
0062	SCREW-HEX HD CAP	100-0062-11	1	1	1	1	1	1	1	1	1	1	1	1	1	1	
0099	BOTTOM PLATE																
	ALL A8 / B8 / C8 / D8 / F8	003-0570-00		1			1		1			1		1			
	ALL THE REST	003-0099-00	1	1	1	1	1	1	1	1	1	1	1	1	1	1	
0104	GASKET-HOUSING COVER	020-0104-00	1	1	1	1	1	1	1	1	1	1	1	1	1	1	
0105	SPACER-MOUNTING ASSM																
	060E / TFD	527-0124-00		1													
	ALL THE REST	527-0105-00	1	1	1	1	1	1	1	1	1	1	1	1	1	1	
0134	BOX-TERMINAL																
	ALL ES8 / ESX / FSC	062-0134-02	1	1													
	ALL CFB / TFC / TFD / TFE / TFU	062-0058-00	1	1	1	1	1	1	1	1	1	1	1	1	1	1	
0159	GASKET-BOTTOM PLATE	020-0159-00	1	1	1	1	1	1	1	1	1	1	1	1	1	1	
0163	COVER-TERMINAL BOX																
	ALL	005-0163-00	1	1	1	1	1	1	1	1	1	1	1	1	1	1	
	ALL ESX / ES8 / FSC	005-0396-00	1	1													
0187	SLEEVE-HEATER	030-0187-00	1		1	1	1	1		1	1		1		1		
0191	VALVE-SCHRADER TEE	510-0191-00	1	1	1	1	1	1	1	1	1	1	1	1	1	1	
0198	REED-SUCTION	056-0198-20	2	2	2	2	2	2	2	2	2	2	2	2	2	2	
0227	CONNECTOR BLOCK																
	ESX / ES8 / FSC	NONE															
	ALL THE REST	021-0227-02	1	1	1	1	1	1	1	1	1	1	1	1	1	1	
0255	BEARING HOUSING COVER	035-0255-00	1	1	1	1	1	1	1	1	1	1	1	1	1	1	
0256	BEARING FRONT MAIN	035-0256-00	1	1	1	1	1	1	1	1	1	1	1	1	1	1	
0257	BEARING REAR MAIN	035-0257-00	1	1	1	1	1	1	1	1	1	1	1	1	1	1	
0339	HEAD-CYLINDER	002-0339-01	1	1	1	1	1	1	1	1	1	1	1	1	1	1	
0346	PLATE TERMINAL GROUP																
	ALL CFB	521-0205-00	1					1					1				
	ALL ES8 / ESX	521-0179-00	1														
	ALL FSC	521-0204-00	1	1													
	ALL TFC / TFD / TFE / TFU	503-0346-01	1	1	1	1	1	1	1	1	1	1	1	1	1	1	

Ref. No.	Description	Part No.	Compressor Model																
			2DA3	2DA8	2DAJ	2DB3	2DB8	2DC3	2DC8	2DCJ	2DD3	2DD8	2DF3	2DF8	2DL3				
0429	PROTECTOR																		
	0500 / TFC	998-0429-02	1			1													
	0600-060E-0750-075E / TFD	998-0429-05	1		1	1	1											1	
	0400-040E / TFC																	1	
	0490 / TFC	998-0429-08				1													
	0600-060E / TFC				1	1													
	0750-075E / TFC			1		1	1												1
	0400-040E / TFD																	1	
	0500-050E / TFD	998-0429-10	1			1		1		1	1	1							
	0600-060E / TFD		1	1															
	0500-050E / TFC	998-0429-13						1	1	1									
	0600-060E / TFE	998-0429-18	1																
	0300-030E / TFC	998-0429-22																1	
	0300-030E / TFD																	1	1
	0400-040E / TFE	998-0429-23																	1
	0500-050E / TFE		1			1		1	1		1								
	0500-050E / TFC	998-0429-24										1	1						
	0500 / TFU																	1	
	0750-075E / TFE	998-0429-25	1																1
	0600-060E / TFE	998-0429-26				1													
0300-030E / TFE	998-0429-27																1	1	
0300-030E-0500 / CFB	998-0476-01	1					1										1		
ALL ESX / ES8 / FSC	NONE																		
0504	PISTON & ROD ASSM KIT	998-0504-60	2	2	2														
		998-0504-61				2	2												
		998-0504-62						2	2	2									
		998-0504-63										2	2						
		998-0504-64												2	2				
																		2	
0505	RING PISTON																		
	LOWER RING	025-0002-00						2	2	2	2	2						2	
		025-0002-33				2	2							2	2				
		025-0002-35	2	2	2														
	UPPER RING	025-0088-00						2	2	2	2	2							2
025-0088-33					2	2							2	2					
		025-0088-35	2	2	2														
0509	OIL PUMP PACKS	995-0509-01	1	1	1	1	1	1	1	1	1	1	1	1	1	1	1	1	
	SPRING-OIL RELIEF VALVE	006-0202-00	1	1	1	1	1	1	1	1	1	1	1	1	1	1	1	1	
	SHAFT-OIL PUMP	007-0290-00	1	1	1	1	1	1	1	1	1	1	1	1	1	1	1	1	
	PIN-DOWEL	011-0089-00	1	1	1	1	1	1	1	1	1	1	1	1	1	1	1	1	
	GASKET-O RING	020-0003-28	1	1	1	1	1	1	1	1	1	1	1	1	1	1	1	1	
	GASKET-OIL PUMP	020-0002-29	1	1	1	1	1	1	1	1	1	1	1	1	1	1	1	1	

Ref. No.	Description	Part No.	Compressor Model												
			2DA3	2DA8	2DAJ	2DB3	2DB8	2DC3	2DC8	2DCJ	2DD3	2DD8	2DF3	2DF8	2DL3
0509	GASKET-CIRCULAR	020-0006-13	1	1	1	1	1	1	1	1	1	1	1	1	
	GASKET-SENTRONIC SENSOR	020-0297-13	1	1	1	1	1	1	1	1	1	1	1	1	
	RING-REVERSING	025-0077-00	1	1	1	1	1	1	1	1	1	1	1	1	
	IMPELLER-OUTER	038-0038-00	1	1	1	1	1	1	1	1	1	1	1	1	
	IMPELLER-INNER	038-0040-00	1	1	1	1	1	1	1	1	1	1	1	1	
0510	SERV VALVE														
	SUCTION 1 3/8 SWT	998-0510-11	1	1	1	1	1	1	1	1	1	1	1	1	
	DISCHARGE 7/8 SWT	998-0510-12	1	1	1	1	1	1	1	1	1	1	1	1	
0513	OIL SCREEN KIT	998-0513-03	1	1	1	1	1	1	1	1	1	1	1	1	
0524	SOLID STATE MODULE KIT														
	0500-ES8		1												
	0610-061E / ESX	998-0524-10	1												
	0750 / FSC		1	1											
0650	COVER STATOR														
	0500 / CFB		1												
	0500 / ES8		1												
	0500 / TFC	005-0649-01	1		1										
	0500 / TFD		1		1										
	0500 / TFE		1		1										
	ALL THE REST	005-0650-03	1	1	1	1	1	1	1	1	1	1	1	1	
0683	PLATE-SEAL ADAPTOR	003-0683-00	1	1	1	1	1	1	1	1	1	1	1	1	
0709	GASKET-STATOR COVER	020-0709-00	1	1	1	1	1	1	1	1	1	1	1	1	
0719	CRANKSHAFT KIT														
	ALL A3 / A8 / AJ / B3 / B8	998 0719-00	1	1	1	1	1								
	ALL C3 / C8 / CJ	998-0719-03					1	1	1						
	ALL D3 / D8 / F3 / F8	998-0719-04								1	1	1	1		
	ALL L3	998-0719-05												1	
0732	GASKET-OIL PUMP	020-0732-00	1	1	1	1	1	1	1	1	1	1	1	1	
0756	GASKET-CYLINDER HEAD	020-0756-00	1	1	1	1	1	1	1	1	1	1	1	1	
0757	GASKET VALVE PLATE	020-0757-00										1	1		
		020-0757-01			1	1									
		020-0757-02					1	1	1	1	1			1	
		020-0757-04	1	1	1										
0803	DIAGRAM-WIRING														
	ALL TFC / TFD / TFE / TFU	052-0803-00	1	1	1	1	1	1	1	1	1	1	1	1	
	ALL CFB	052-0804-00	1					1				1			

Ref. No.	Description	Part No.	Compressor Model																
			2DA3	2DA8	2DAJ	2DB3	2DB8	2DC3	2DC8	2DCJ	2DD3	2DD8	2DF3	2DF8	2DL3				
0803	ALL ESX / ES8	052-0897-00	1																
	ALL FSC	052-0899-00	1	1															
0844	SEAL-SIGHT GLASS	020-0844-04	1	1	1	1	1	1	1	1	1	1	1	1	1				
2025	STATOR																		
	0300-030E / TFC	046-2025-11												1					
	0300-030E / TFD	046-2025-12												1	1				
	0500-050E / TFC	046-2025-13	1			1		1	1	1	1	1							
	0500 / TFU												1						
	0400-040E / TFC	046-2025-14															1		
	0490 / TFC					1													
	0600-060E / TFC		1			1	1											1	
	0750-075E / TFU	046-2025-15												1					
	0400-040E / TFD	046-2025-16																1	
	0500-050E / TFD		1	1		1		1	1	1	1								
	0600-060E / TFD		1																
	0600-060E / TFD	046-2025-17				1	1												
	0750-075E / TFD	046-2025-18	1		1													1	
	0400-040E / TFE	046-2025-19																	1
	0500-050E / TFE		1			1		1	1		1								
	0600-060E / TFE		1																
	0600-060E / TFE		046-2025-20				1												
	0750-075E / TFE	046-2025-21	1																1
	0300 / TFE	046-2025-22																1	
030E / TFE													1						
0610-061E / ESX	046-2043-16	1																	
0500 / ES8	046-2043-19	1																	
0300-030E / CFB	046-3002-05																		
0500-CFB		1					1												
0750 / FSC	046-3036-26		1																
2028	ROTOR																		
	0300-030E / TFC / TFD / TFE	047-2028-02												1	1				
	0400-040E / TFD / TFE	047-2028-03																1	
	0500-050E / TFC / TFD / TFE / TFU		1			1		1	1	1	1	1	1						
	0600-060E / TFD / TFE		1	1															
	0400-040E / TFC	047-2028-04																1	
0600-060E / TFC / TFD / TFE					1	1													

Ref. No.	Description	Part No.	Compressor Model														
			2DA3	2DA8	2DAJ	2DB3	2DB8	2DC3	2DC8	2DCJ	2DD3	2DD8	2DF3	2DF8	2DL3		
2028	0600 / TFC	047-2028-04	1														
	0750-075E / TFC / TFD / TFE	047-2028-05	1	1													1
	0610-061E / ESX	047-2029-00	1														
	0500 / ES8 (CEC)	047-2029-01	1														
	0300-030E / CFB												1				
	0500 / CFB	047-3001-06	1				1										
	0750 / FSC		1	1													
2661	VALVE PLATE KIT																
	0500 / CFB						1										
	0500 / TFC / TFD / TFE					1	1	1		1	1						
	050E / TFC / TFD / TFE	998-1661-23					1			1							
	0750 / FSC		1	1													
	0750 / TFC / TFD / TFE		1														1
	075E / TFC / TFD / TFE		1														
	ALL THE REST	998-1661-29	1	1	1	1	1	1	1	1	1	1	1	1	1	1	1
5100	SUCT & DISCH VALVE KIT	998-5100-00	1	1	1	1	1	1	1	1	1	1	1	1	1	1	1
8012	GASKET-SERVICE VALVE	020-0012-09	1	1	1	1	1	1	1	1	1	1	1	1	1	1	1
9008	OIL PUMP KIT	998-0008-33	1	1	1	1	1	1	1	1	1	1	1	1	1	1	1
9012	GASKET-SERVICE VALVE	020-0012-11	1	1	1	1	1	1	1	1	1	1	1	1	1	1	1
9028	HEATER CRANKCASE																
	100W / 120 V	918-0028-00	1	1	1	1	1	1	1	1	1	1	1	1	1	1	1
	100W / 240 V	918-0028-01	1	1	1	1	1	1	1	1	1	1	1	1	1	1	1
	ALL A8 / C8 / D8 / F8	918-0001-02		1					1			1		1			
	ALL A8 / C8 / D8 / F8	918-0001-03		1					1			1		1			
9513	SUCTION SCREEN KIT	998-0513-04	1	1	1	1	1	1	1	1	1	1	1	1	1	1	1
9844	SEAL																
	ESX / FSC	NONE															
	ALL THE REST	020-0844-02	1	1	1	1	1	1	1	1	1	1	1	1	1	1	1



Ref. No.	Description	Part No.	Compressor Model						
			3DA3A	3DB3A	3DB4A	3DF3A	3DF4A	3DS3A	3DS4A
0002	SIGHT GLASS KIT	998-0002-02	1	1	1	1	1	1	1
0009	KEY-CRANKSHAFT	075-0009-00	1	1	1	1	1	1	1
0012	GASKET-SERVICE VALVE	020-0012-12	1	1	1	1	1	1	1
0013	SCREW-HEX- HD CAP	100-0013-48	2	2	2	2	2	2	2
0018	TERMINAL-FUSED CLUSTER	521-0018-00	1	1					
	0500 / TFC / TFD / TFE		1						
	0600 / TFC / TFD / TFE		1						
	060E / TFC / TFD / TFE		1						
	0750 / TFC / TFD / TFE		1	1	1	1	1	1	
	0750 / TFU		1						
	075E / TFC / TFD / TFE		1						
0900 / TFU	1								
0028	SEAL-VALVE	020-0028-03	1	1	1	1	1	1	1
0036	ROTALOCK ADAPTER KIT	998-0036-00	1	1	1	1	1	1	1
	GASKET DISCHARGE ADAPTER	020-0008-01	1	1	1	1	1	1	1
0047	WASHER-ROTOR	102-0047-03	1	1	1	1	1	1	1
0062	SCREW-HEX HD CAP	100-0062-07	1	1	1	1	1	1	1
0074	ROD-CONNECTING ASSM	508-0074-00	3	3	3	3	3	3	3
0142	VALVE-OIL CHECK ASSM	510-0142-00	1	1	1	1	1	1	1
0177	BOX-TERMINAL	062-0177-00	1	1	1	1	1	1	1
	ALL ES8 / ESX / FSM		1	1	1	1	1	1	1
	ALL TFC / TFD / TFE / TFU	062-0205-00	1	1	1	1	1	1	1
0187	SLEEVE-HEATER	030-0187-00	1	1	1	1	1	1	1
0191	VALVE-SCHRADER TEE	510-0191-00	1	1	1	1	1	1	1
0213	REED-SUCTION	056-0213-02	3	3	3	3	3	3	3
	BEARING-MAIN	035-0219-00	1	1	1	1	1	1	1
		035-0220-00	1	1	1	1	1	1	1
0221	BEARING HOUSING COVER	035-0221-00	1	1	1	1	1	1	1
0223	HEAD-CYLINDER	002-0340-01	1	1	1	1	1	1	1
0227	CONNECTOR BLOCK	021-0227-02	1	1					
	0500 / TFC / TFD / TFE		1						
	0600 / TFC / TFD / TFE		1						
	060E / TFC / TFD / TFE		1						
	0750 / TFC / TFD / TFE / TFU		1	1	1	1	1	1	
	075E / TFC / TFD / TFE		1						
0900 / TFU	1								
0281	COVER-TERMINAL BOX	505-0281-04	1	1	1	1	1	1	1
	0750-075E / TFC / TFD / TFE / TFU		1	1	1	1	1	1	
	0500-0600-060E / TFC / TFD / TFE / TFU		1	1	1	1	1	1	
	0750 / TFC / TFD / TFE / FSM	505-0281-08	1						

Ref. No.	Description	Part No.	Compressor Model						
			3DA3A	3DB3A	3DB4A	3DF3A	3DF4A	3DS3A	3DS4A
0281	075E / TFC / TFD / TFE	505-0281-08	1						
	0900-090E1000-100E-1200-120E-1500-150E / TFC / TFD / TFE		1	1	1	1	1	1	
	0910 / ESX	505-0308-07	1						
	0710-071E-091E-1000-121E-1500 / ESX / ES8	505-0308-10	1	1			1		
	0500-0600-0750-900-1000-100/FSM	505-0308-11	1		1		1		
0346	PLATE-TERMINAL GROUP								
	0500-0600-060E / TFC / TFD / TFE	503-0346-01	1	1					
	0750-075E / TFC / TFD / TFE		1		1		1	1	
	0750 / TFU		1						
	0900 / TFU		1						
	0750-075E / TFC / TFD / TFE		1						
	0900-090E-1000-100E-1200-120E-1500-150E / TFC / TFD / TFE	503-0804-00		1	1	1	1	1	1
	ALL ESX / ES8	521-0179-00	1	1			1		
ALL FSM	521-0204-00	1	1		1	1			
0429	PROTECTOR								
	0900-090E / TFC	998-0429-00			1				
	1000-100E / TFC						1	1	
	0500 / TFC	998-0429-02	1						
	0500 / TFD		1	1					
	0600-060E / TFE	998-0429-03	1						
	0750-075E / TFE			1			1		
	0750 / TFC		1		1		1	1	
	0750 / TFU	998-0429-04	1						
	075E / TFC			1					
	0600 / TFD	998-0429-05	1						
	060E / TFD			1					
	0750 / TFC								
	075E / TFC	998-0429-06	1						
	1000 / TFC			1	1				
	100E / TFC			1					
	0600 / TFC	998-0429-08	1						
	060E / TFC			1					
	0750 / TFD	998-0429-09		1		1		1	
	075E / TFD			1					
0900 / TFD					1				
090E / TFD					1				
1000 / TFD						1	1		
100E / TFD							1		

Ref. No.	Description	Part No.	Compressor Model						
			3DA3A	3DB3A	3DB4A	3DF3A	3DF4A	3DS3A	3DS4A
0429	0750 / TFE	998-0429-11	1						
	075E / TFE		1						
	0900 / TFE								
	090E / TFE				1				
	1000 / TFE			1					
	100E / TFE			1			1		
	0750 / TFD	998-0429-17	1						
	075E / TFD		1						
	1000 / TFD		1	1					
	100E / TFD		1						
	0500-TFE	998-0429-19	1	1					
	0900-TFU	998-0429-20	1						
	150E / TFC	998-0451-01					1		
	1200 / TFC	998-0451-02				1			
	120E / TFC				1	1			
	1500 / TFD	998-0455-00					1		
	150E / TFD						1		
	150E / TFE		998-0455-02					1	
1200 / TFD	998-0455-03			1	1				
120E / TFD				1	1				
0504	PISTON & ROD ASSM KIT	998-0504-40	3						
		998-0504-41		3	3				
		998-0504-42					3	3	
		998-0504-43			3	3			
0505	RING PISTON								
	LOWER RING	025-0002-17	3						
		025-0002-21			3	3			
		025-0002-25		3	3				
		025-0002-29					3	3	
	UPPER RING	025-0088-17	3						
		025-0088-21			3	3			
		025-0088-25		3	3				
025-0088-29						3	3		
0509	OIL PUMP PACKS	995-0509-01	1	1	1	1	1	1	
	SPRING-OIL RELIEF VALVE	006-0202-00	1	1	1	1	1	1	
	SHAFT-OIL PUMP	007-0290-00	1	1	1	1	1	1	
	PIN-DOWEL	011-0089-00	1	1	1	1	1	1	
	GASKET-O RING	020-0003-28	1	1	1	1	1	1	
	GASKET-OIL PUMP	020-0003-29	1	1	1	1	1	1	
	GASKET-CIRCULAR	020-0006-13	1	1	1	1	1	1	
GASKET-SENTRONIC SENSOR	020-0297-13	1	1	1	1	1	1		

Ref. No.	Description	Part No.	Compressor Model						
			3DA3A	3DB3A	3DB4A	3DF3A	3DF4A	3DS3A	3DS4A
0509	RING- REVERSING	025-0077-00	1	1	1	1	1	1	1
	IMPELLER-OUTER	038-0038-00	1	1	1	1	1	1	1
	IMPELLER-INNER	038-0040-00	1	1	1	1	1	1	1
0510	SERV VALVE								
	SUCTION 1 5/8 SWT	998-0510-07							
	1200-120E / TFC / TFD					1			
	1500-150E / ES8 / TFC / TFD / TFE						1		
	SUCTION 1 3/8 SWT	998-0510-08							
	0750-1000 / TFC			1					1
	0750-0900-1000 / TFD				1		1		1
	ALL THE REST	998-0510-11	1	1	1	1	1	1	1
	DISCHARGE 7/8 SWT	998-0510-37							
0500 / TFC / TFD / TFE	1		1						
ALL THE REST	998-0510-02	1	1	1	1	1	1	1	
0513	OIL SCREEN KIT	998-0513-03	1	1	1	1	1	1	1
TERMINAL PACKS									
0521	0500-0600-0750-0900-1000-100E-1500 / FSM	995-0521-01	1	1		1		1	
	0750-075E-0900-090E-1000-100E-1200-120E-1500-150E /TFC/TFD/TFE	995-0521-03	1	1	1	1	1	1	
	0710-0910-091E-1000-1210-121E-1500 / ESX / ES8	995-0521-04	1	1				1	
0524	SOLID STATE MODULE KIT								
	ALL ES8 / ESX / FSM	998-0524-10	1	1		1		1	
0649	COVER STATOR	005-0651-00							
	0750 / TFC / TFD								1
	0900 / TFD					1			
	1000 / TFC / TFD			1					1
	1200 / TFC / TFD						1		
	120E / TFC / TFD						1		
	1500/ ES8 / FSM / TFC / TFD / TFE							1	
	150E / TFC / TFD / TFE							1	
	0500 / FSM / TFC / TFD / TFE		005-0649-01	1	1				
	0600 / FSM / TFC / TFD / TFE	1							
	060E / TFC / TFD / TFE	1							
	0710-071E / ESX	1							
	0750 / FSM / TFC / TFD / TFE			1					
	075E / TFC / TFD / TFE			1					
	0900 / TFU		1						
ALL THE REST	005-0650-03	1	1		1		1		
0678	GASKET CLOSURE PLATE	020-0678-00	1	1	1	1	1	1	1

Ref. No.	Description	Part No.	Compressor Model						
			3DA3A	3DB3A	3DB4A	3DF3A	3DF4A	3DS3A	3DS4A
0681	GASKET BOTTOM PLATE								
	0750 / TFC	020-0479-00			1				
	0910 / ESX		1						
	ALL THE REST	020-0681-02	1	1	1	1	1	1	1
0709	GASKET-STATOR COVER	020-0709-00	1	1	1	1	1	1	1
0723	CRANKSHAFT KIT	998 0723-03	1	1	1				
		998-0723-05			1	1	1	1	
0730	GASKET-CYLINDER HEAD	020-0730-00	1	1	1	1	1	1	1
0732	GASKET-OIL PUMP	020-0732-00	1	1	1	1	1	1	1
0749	GASKET-HOUSING COVER	020-0749-00	1	1	1	1	1	1	1
0770	BOTTOM PLATE								
	0500-TFE		1						
	0750-TFC	003-0098-00			1				
	0910-ESX		1						
	1000-ES8						1		
	ALL THE REST	003-0770-00	1	1	1	1	1	1	1
0803	DIAGRAM-WIRING								
	0500 / TFC / TFD / TFE	052-0803-00	1	1					
	0600 / TFC / TFD / TFE		1						
	060E / TFC / TFD / TFE		1						
	0750 / TFC / TFD / TFE / TFU		1	1	1		1	1	
	075E / TFC / TFD / TFE		1						
	0900 / TFU		1						
	0750 / TFC / TFD / TFE		1						
	075E / TFC / TFD / TFE		1						
	0900 / TFC / TFD / TFE				1	1			
	090E / TFC / TFD / TFE				1				
	1000 / TFC / TFD / TFE	052-0837-00	1	1			1	1	
	100E / TFC / TFD / TFE		1				1		
	1200 / TFC / TFD				1	1			
	120E / TFC / TFD				1	1			
	1500 / TFC / TFD / TFE						1		
	150E / TFC / TFD / TFE						1		
	0710 / ESX		1						
	071E / ESX		1						
	0910 / ESX		1						
	091E / ESX		1						
	1000 / ES8	052-0897-00	1				1		
	1210 / ESX						1		
121E / ESX						1			
1500 / ES8						1			

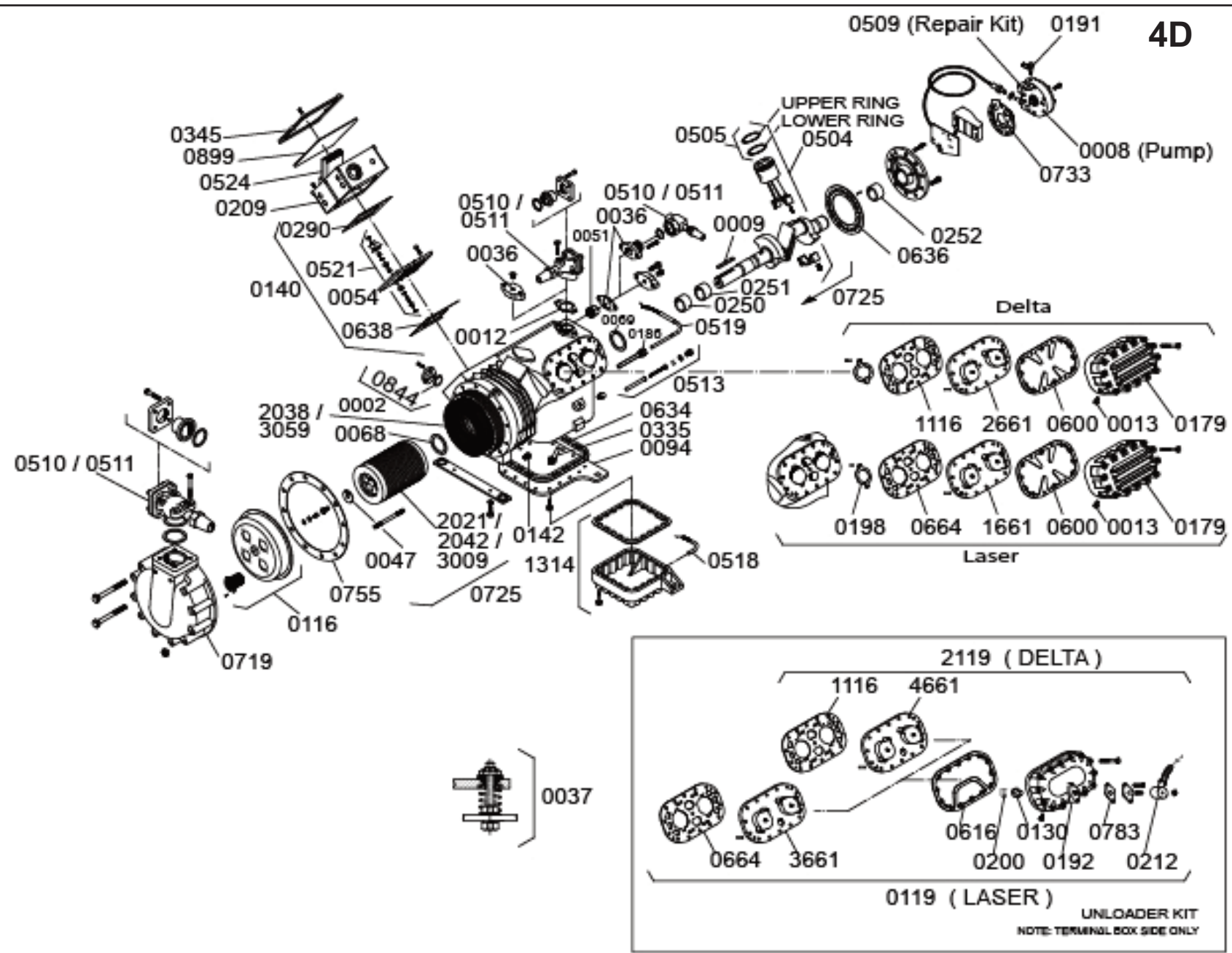
Ref. No.	Description	Part No.	Compressor Model						
			3DA3A	3DB3A	3DB4A	3DF3A	3DF4A	3DS3A	3DS4A
0803	0500-0600-0750-0900-1000-100E-1500 / FSM	052-0899-00	1	1		1		1	
0844	SEAL-SIGHT GLASS	020-0844-04	1	1	1	1	1	1	1
0981	VALVE PLATE GASKET KIT	920-0981-00		1	1				
		920-0981-01			1	1			
		920-0981-02	1						
		920-0981-03					1	1	
2027	ROTOR								
	1200 / TFC / TFD	047-2027-00			1	1			
	120E / TFC / TFD				1	1			
	1500 / ES8 / FSM / TFD / TFE						1		
	150E / TFC / TFD / TFE						1		
	0900 / FSM / TFC / TFD / TFE	047-2027-01			1	1			
	090E / TFC / TFD / TFE				1				
	1000/ ES8 / FSM / TFC / TFD / TFE						1	1	
	100E / TFC / TFD / TFE						1		
	1210-121E / ESX	047-2027-02					1		
	0750 / FSM / TFC / TFD / TFE		1						
	075E / TFC / TFD / TFE		1						
	0910-091E / ESX		1						
	1000/ ES8 / FSM / TFC / TFD / TFE	047-2027-03		1	1				
	100E / TFC / TFD / TFE		1						
	0600 / FSM / TFC / TFD / TFE		1						
	060E / TFC / TFD / TFE		1						
	0710-071E / ESX	047-2028-00	1	1					
	0750 / FSM / TFC / TFD / TFE / TFU		1	1					
	075E / TFC / TFD / TFE / TFU		1						
0900 / TFU	1								
1000 / TFC	047-2028-01			1					
0750 / TFC / TFD / TFE				1		1	1		
0500 / FSM / TFC / TFD / TFE		1	1						
0500 / FSM / TFC / TFD / TFE		1	1						
2043	STATOR - AOS								
	0750-0900 / FSM	046-2043-04	1						
	1000-100E / FSM			1			1		
	0600 / FSM	046-2043-05							
	0750 / FSM	046-2043-06		1					
	0710-071E / ESX	046-2043-16	1						
	1500 / ES8	046-2043-17					1		
	0910-091E-1210-121E / ESX	046-2043-18		1			1		
1000 / ES8			1			1			
1200-120E-1500-150E / TFD	046-2047-16			1	1	1			

Ref. No.	Description	Part No.	Compressor Model						
			3DA3A	3DB3A	3DB4A	3DF3A	3DF4A	3DS3A	3DS4A
2043	0750-075E-0900-090E-1000-100E / TFC	046-2047-17	1	1	1	1		1	
	0750-075E-0900-090E-1000-100E / TFD	046-2047-18	1	1	1	1	1	1	
	0750-075E / TFC	046-2047-19		1		1		1	1
	0750-075E / TFD	046-2047-20		1		1		1	1
	0600-060E / TFC	046-2047-21	1						
	0600-060E / TFD	046-2047-22	1						
	0500 / TFC	046-2047-23		1					
	0500 / TFD	046-2047-24	1	1					
	1500-150E / TFE	046-2047-25						1	
	0750-075E-0900-090E-1000-100E / TFE	046-2047-26	1	1		1		1	
	0750-075E / TFE	046-2047-27		1				1	
	0600-060E / TFE	046-2047-28	1						
	0500 / TFE	046-2047-29	1	1					
	STATOR - CEC								
	0750-0900 / TFU	046-2047-30	1	1					
	1200-120E / TFC	046-2047-34				1	1		
	1500-150E / TFC							1	
2661	VALVE PLATE KIT								
	0500 / TFC / TFD / TFE	998-2661-43	1	1					
	0600 / TFC / TFD / TFE		1						
	060E / TFC / TFD / TFE		1						
	0750 / FSM / TFC / TFD / TFE			1		1		1	1
	075E / TFC / TFD / TFE			1					
	0900 / FSM / TFD / TFU			1		1	1		
	090E / TFC / TFD / TFE					1			
	1000 / ES8 / FSM / TFC / TFD							1	1
	100E / FSM / TFC / TFD / TFE							1	
	1200 / TFD						1	1	
	120E / TFC / TFD					1	1		
	1210 / ESX						1		
	121E / ESX						1		
	0710-071E / ESX	998-2661-51	1						
	0750 / FSM / TFD / TFE / TFU		1						
	075E / TFC / TFD / TFE		1						
	0910-091E / ESX			1					
	1000 / ES8 / FSM / TFC / TFD / TFE			1	1				
	100E / TFC / TFD / TFE			1					
1500 / ES8 / TFD							1		

Ref. No.	Description	Part No.	Compressor Model						
			3DA3A	3DB3A	3DB4A	3DF3A	3DF4A	3DS3A	3DS4A
2661	150E / TFC / TFD / TFE	998-2661-51					1		
5100	SUCT & DISCH VALVE KIT								
	0500 / FSM / TFC / TFD / TFE	998-5100-01	1	1					
	0750-1000 / TFC	998-5100-03			1				1
	0750-0900-1000 / TFD				1			1	
	1200 / TFC / TFD	998-5100-04				1			
	120E / TFC / TFD					1			
	1500 / ES8 / FSM / TFC / TFD / TFE							1	
	150E / TFC / TFD / TFE							1	
ALL THE REST	998-5100-02	1	1	1	1	1	1	1	
9008	OIL PUMP KIT	998-0008-33	1	1	1	1	1	1	1
9009	SPACER-MOUNTING ASSM								
	0500-0600-060 / FSM / TFC / TFD / TFE	527-0009-00	1	1					
	0710-071E / ESX		1						
	0750-075E / FSM / TFC / TFD / TFE		1	1					
	0750-0900 / TFU		1	1					
	0750-075E / TFC / TFD / TFE	527-0045-00				1		1	1
	0900-090E / TFC / TFD / TFE					1	1		
	0910-091E / ESX			1					
	1000-100E-1200-120E-1500-150E / ES8 / FSM / TFC / TFD / TFE			1	1	1	1	1	
	1210-121E / ESX								1
1500-150E / ES8 / FSM / TFC / TFD / TFE	527-0081-00						1		
9028	HEATER CRANKCASE KIT 120 V	918-0028-00	1	1	1	1	1	1	1
	HEATER CRANKCASE KIT 240 V	918-0028-01	1	1	1	1	1	1	1
9513	SCREEN-SUCTION	998-0513-04	1	1	1	1	1	1	1
9844	SEAL								
	0500 / TFC / TFD / TFE	020-0844-02	1	1					
	0600 / FSM / TFC / TFD / TFE		1						
	060E / TFC / TFD / TFE		1						
	0750 / TFC / TFD / TFE / TFU		1	1		1		1	1
	075E / TFC / TFD / TFE			1					
0900 / TFU			1						

Ref. No.	Description	Part No.	Compressor Model				
			3DA3	3DB3	3DF3	3DS3	
ALL PARTS COMPATIBLE WITH DELTA REED EXCEPT FOR :							
1661	VALVE PLATE KIT						
	0600 / FSM / TFC / TFD / TFE	998-1661-43	1				
	060E / TFC / TFD / TFE		1				
	0750 / FSM / TFC / TFD / TFE			1			
	075E / TFC / TFD / TFE			1			
	0900 / TFU			1			
	0900 / FSM / TFC / TFD / TFE				1		
	090E / TFC / TFD / TFE				1		
	1000 / ES8 / FSM / TFC / TFD / TFE					1	
	100E / TFC / TFD / TFE					1	
	0750 / FSM / TFC / TFD / TFE / TFU		998-1661-51	1			
	075E / TFC / TFD / TFE			1			
	1000 / FSM / TFC / TFD / TFE				1		
	100E / TFC / TFD / TFE				1		
	1200 / TFC / TFD / TFE					1	
	120E / TFC / TFD					1	
	1500 / ES8 / FSM / TFC / TFD / TFE						1
	150E / TFC / TFD / TSK / TFE						1

4D



Ref. No.	Description	Part No.	Compressor Model																		
			4DA1A	4DA3A	4DAGA	4DAJA	4DB3A	4DBGA	4DH1A	4DH3A	4DHGA	4DJ1A	4DJ3A	4DJGA	4DL1A	4DL3A	4DL8A	4DLGA	4DT1A	4DT3A	4DTGA
0002	SIGHT GLASS KIT	998-0002-02	1	1	1	1	1	1	1	1	1	1	1	1	1	1	1	1	1	1	1
0008	OIL PUMP KIT	998-0008-33	1	1	1	1	1	1	1	1	1	1	1	1	1	1	1	1	1	1	1
0009	KEY-ECCENTRIC SHAFT	075-0009-00	1	1	1	1	1	1	1	1	1	1	1	1	1	1	1	1	1	1	1
0012	GASKET-SERVICE VALVE	020-0012-09	1	1	1	1	1	1	1	1	1	1	1	1	1	1	1	1	1	1	1
0013	SCREW-HEX HD CAP	100-0013-69	1	1	1	1	1	1	1	1	1	1	1	1	1	1	1	1	1	1	1
0036	ROTALOCK ADAPTER KIT	998-0036-00	1	1	1	1	1	1	1	1	1	1	1	1	1	1	1	1	1	1	1
0037	SPACER-MOUNTING ASSM																				
	ALL 4DA / 4DL (EXCEPT 4D L8A) / 4DT / 4DH (15 H.P.)	527-0037-00	1	1	1	1			1	1	1				1	1		1	1	1	1
	ALL 4DB / 4DJ / 4D L8A / / 4DH (25 H.P.)	527-0042-00				1	1	1	1	1	1	1			1						
0047	WASHER-ROTOR	102-0047-01	1	1	1	1	1	1	1	1	1	1	1	1	1	1	1	1	1	1	1
0051	PRESS RELIEV VALVE KIT	998-0051-00	1	1	1	1	1	1	1	1	1	1	1	1	1	1	1	1	1	1	1
0054	BOARD-PILOT TERM ASSM	580-0054-00	1	1	1	1	1	1	1	1	1	1	1	1	1	1	1	1	1	1	1
0068	WASHER-THRUST	102-0068-00	1	1	1	1	1	1	1	1	1	1	1	1	1	1	1	1	1	1	1
0069	WASHER-THRUST	102-0068-01	1	1	1	1	1	1	1	1	1	1	1	1	1	1	1	1	1	1	1
0094	FLAT BOTTOM																				
	BOTTOM PLATE	003-0094-00	1	1	1	1	1	1	1	1	1	1	1	1	1	1	1	1	1	1	1
0116	SHELL-STRAINER ASSM	548-0116-00	1	1	1	1	1	1	1	1	1	1	1	1	1	1	1	1	1	1	1
0140	TERMINAL PLATE GROUP																				
	1000-FSM		1																		
	100E-FSM			1	1																
	1500-FSD														1			1			
	150E-FSD / FSM								1	1						1		1			
	2000-FSD / TSE / TXE		1	1							1										
	200E-FSD / FSM / TSE			1	1							1	1								
	2200-FSD / TSE					1														1	1
	220E-FSD / TSE					1															1
	2500-FSD / FXD / TSE / TXE								1	1											
	250E-FSD								1	1											
	3000-FSD / TSE / TXE										1	1	1								
	300E-FSD											1									
	ALL ES8	521-0141-00								1					1			1		1	1
ALL TSK	521-0142-00	1	1	1	1	1	1	1	1	1	1	1			1	1		1	1	1	
ALL TXK			1					1			1	1									
1000-1010 / TSE	521-0143-00	1	1																		
1500-150E / TSE								1	1					1	1						
0142	VALVE OIL CHECK ASSM	510-0142-00	1	1	1	1	1	1	1	1	1	1	1	1	1	1	1	1	1	1	1
0160	HEAD CYLINDER	002-0160-00	2						2			2					2				
		002-0335-00		2	2	2	2	2		2	2		2	2		2	2	2		2	2
0186	HEATER-SLEEVE	030-0186-00	1	1	1	1	1	1	1	1	1	1	1	1	1	1	1	1	1	1	1

Ref. No.	Description	Part No.	Compressor Model																			
			4DA1A	4DA3A	4DAGA	4DAJA	4DB3A	4DBGA	4DH1A	4DH3A	4DHGA	4DJ1A	4DJ3A	4DJGA	4DL1A	4DL3A	4DL8A	4DLGA	4DT1A	4DT3A	4DTGA	
0191	VALVE-SCHRADER TEE	510-0191-00	1	1	1	1	1	1	1	1	1	1	1	1	1	1	1	1	1	1	1	
0209	BOX-TERMINAL	062-0209-00	1	1	1	1	1	1	1	1	1	1	1	1	1	1	1	1	1	1	1	
0250	BEARING REAR MAIN	035-0250-00	1	1	1	1	1	1	1	1	1	1	1	1	1	1	1	1	1	1	1	
0251	BEARING FRONT MAIN	035-0251-00	1	1	1	1	1	1	1	1	1	1	1	1	1	1	1	1	1	1	1	
0252	COVER BEARING	035-0251-00	1	1	1	1	1	1	1	1	1	1	1	1	1	1	1	1	1	1	1	
0290	GASKET -TERMINAL BOX 1500-ES8	020-0290-00																				
	1000-1500-2000-FSD		1								1											
	1000-1500-3000-TSE		1							1												
	1000-1500-2000-2500-TSK		1							1												
	ALL THE REST		020-0766-00		1	1	1	1	1	1	1	1	1	1	1	1	1	1			1	1
0335	SERV CHECK VALVE KIT	998-0335-00	1	1	1	1	1	1	1	1	1	1	1	1	1	1	1	1	1	1	1	
0345	COVER TERMINAL BOX	005-0345-00	1	1	1	1	1	1	1	1	1	1	1	1	1	1	1	1	1	1	1	
0504	PISTON & ROD ASSM KIT	998-0504-38	4	4	4	4																
		998-0504-39							4	4	4				4	4	4	4				
		998-0504-53										4	4	4					4	4	4	
		998-0504-67					4	4														
0505	RING PISTON																					
	LOWER RING	025-0002-00	4	4	4	4																
		025-0002-02					4	4	4	4	4					4	4	4	4			
		025-0002-15										4	4	4						4	4	4
	UPPER RING	025-0088-00	4	4	4	4																
025-0088-02						4	4	4	4	4					4	4	4	4				
025-0088-15											4	4	4						4	4	4	
0509	OIL PUMP PACKS	995-0509-01	1	1	1	1	1	1	1	1	1	1	1	1	1	1	1	1	1	1	1	
	SPRING-OIL RELIEF VALVE	006-0202-00	1	1	1	1	1	1	1	1	1	1	1	1	1	1	1	1	1	1	1	
	SHAFT-OIL PUMP	007-0290-00	1	1	1	1	1	1	1	1	1	1	1	1	1	1	1	1	1	1	1	
	PIN-DOWEL	011-0089-00	1	1	1	1	1	1	1	1	1	1	1	1	1	1	1	1	1	1	1	
	GASKET-O RING	020-0003-28	1	1	1	1	1	1	1	1	1	1	1	1	1	1	1	1	1	1	1	
	GASKET-O RING	020-0003-29	1	1	1	1	1	1	1	1	1	1	1	1	1	1	1	1	1	1	1	
	GASKET-CIRCULAR	020-0006-13	1	1	1	1	1	1	1	1	1	1	1	1	1	1	1	1	1	1	1	
	GASKET-SENTRONIC SENSOR	020-0297-13	1	1	1	1	1	1	1	1	1	1	1	1	1	1	1	1	1	1	1	
	RING-REVERSING	025-0077-00	1	1	1	1	1	1	1	1	1	1	1	1	1	1	1	1	1	1	1	
	IMPELLER-OUTER	038-0038-00	1	1	1	1	1	1	1	1	1	1	1	1	1	1	1	1	1	1	1	
IMPELLER-INNER	038-0040-00	1	1	1	1	1	1	1	1	1	1	1	1	1	1	1	1	1	1	1		
0510	SERVICE VALVES																					
	SUCTION																					
	Ø 1 5/8 UP TO 25 H.P.	998-0510-07	1	1	1	1									1	1	1	1				
	1500-TSE									1												
	150E-FSM / TSE / TSK										1	1										
250E-TSK											1											

Ref. No.	Description	Part No.	Compressor Model																				
			4DA1A	4DA3A	4DAGA	4DAJA	4DB3A	4DBGA	4DH1A	4DH3A	4DHGA	4DJ1A	4DJ3A	4DJGA	4DL1A	4DL3A	4DL8A	4DLGA	4DT1A	4DT3A	4DTGA		
0510	Ø 2 1/8 20 H.P. AND UP	998-0510-20				1	1				1	1	1				1	1	1				
	2500-ES8 / FSD / FXD / TSE / TXE / TSK / TXK							1	1	1													
	250E-ES8 / FSD								1	1													
	DISCHARGE VALVE																						
	ROVALOCK	998-0510-02																					
	1000-100E-FSD / TSE / TSK		1	1	1																		
	1010-101E-TSE / TSK			1																			
	1500-150E-FSD / FSM / TSE / TSK							1	1	1				1			1						
	1500-ES8													1									
	2000-FSD		1																				
	2500-250E-FXD / TSK / TXK	998-0510-46						1		1													
	1500-150E-FSD / TSE / TSK													1	1	1							
	1500-ES8															1							
	2000-200E-FSD / FSM / TSE / TSK / TXE / TXK				1	1							1	1	1								
	2200-220E-FSD / TSE / TSK						1	1											1	1	1		
	2200-ES8																			1	1		
	2500-250E-FSD / FXD / TSK / TXK										1	1											
	2500-250E-ES8									1													
	3000-300E - FSD / TSE / TSK / TXE / TXK												1	1	1								
	2 BOLT MOUNT		998-0510-09																				
	1000-100E-FSD / TSE / TSK	1		1	1																		
	1010-101E-TSE / TSK			1																			
	1500-150E-FSM / TSE / TSK							1	1	1													
	2000-FSD			1																			
	2500-250E-FXD / TSK / TXK							1		1													
	2000-FSD / TSE / TSK / TXE / TXK	998-0510-11		1	1	1						1											
	200E-FSD / FSM / TSE			1	1								1	1									
2200-TSE / TSK						1	1																
220E-FSD / TSE						1																	
2500-FSD / FXD / TSE / TSK / TXE									1	1													
250E-FSD									1	1													
2500-ES8									1														
250E-ES8									1														
3000-FSD / TSE / TSK / TXE / TXK												1	1	1									
300E-FSD													1										
SUCT & DISCH VALVE KIT	998-5100-04																						
1500 - ES8 / FSD / TSE																							
1000-100E- FSD / FSM / TSE / TSK		998-5100-07	1	1	1																		

Ref. No.	Description	Part No.	Compressor Model																			
			4DA1A	4DA3A	4DAGA	4DAJA	4DB3A	4DBGA	4DH1A	4DH3A	4DHGA	4DJ1A	4DJ3A	4DJGA	4DL1A	4DL3A	4DL8A	4DLGA	4DT1A	4DT3A	4DTGA	
0511	1010-101E-TSE / TSK	998-5100-07	1																			
	1500-150E-FSM / TSE / TSK							1	1	1												
	2000 - FSD		1																			
	250E - TSK									1												
	1500-150E- ES8 / FSD / TSE / TSK	998-5100-11												1	1	1						
	2200-220E- ES8 / FSD / TSK	998-5100-12																1	1	1		
	2500 - FXD / TSK / TXK	998-5100-13						1														
	2000-200E-FSD / FSM / TSE / TSK	998-5100-14									1	1	1									
	2200-220E-FSD / FSM / TSE / TSK					1	1															
	2500-250E - ES8 / FSD / FXD / TSE / TSK / TXK								1	1												
	3000-300E - FSD / TSE / TSK / TXE / TXK											1	1	1								
2000-200E - FSD / TSE / TSK / TXE / TXK	998-5100-35		1	1	1																	
0513	OIL SCREEN KIT	998-0513-02	1	1	1	1	1	1	1	1	1	1	1	1	1	1	1	1	1	1	1	
0519	CRANKCASE HTR KIT-CC-100W - XX =00:120 V / 01:240V / 02:480V																					
	FLAT BOTTOM	918-0028-XX	1	1	1	1	1	1	1	1	1	1	1	1	1	1	1	1	1	1	1	
0521	TERMINAL PACKS																					
	ALL 20 / 25 / 30 H.P.- TSE	995-0521-05		1					1			1	1									
	ALL FSD / FSM / FXD / TSE / TXE		1	1	1		1		1	1	1	1	1	1	1		1				1	
	ALL ES8									1							1				1	1
	ALL TSK / TXK	995-0521-10	1	1	1	1	1	1	1	1	1	1	1	1	1	1	1	1	1	1	1	
ALL 10 / 15 H.P. - TSE	995-0521-13	1	1					1	1					1	1							
0524	SOLID STATE MODULE KIT	998-0524-10	1	1	1	1	1	1	1	1	1	1	1	1	1	1	1	1	1	1	1	
0600	GASKET-CYLINDER HEAD	020-0600-00	2	2	2	2	2	2	2	2	2	2	2	2	2	2	2	2	2	2	2	
0616	GASKET CY. HEAD UNLOADER	020-0616-00	1	1	1	1	1	1	1	1	1	1	1	1	1	1	1	1	1	1	1	
0634	GASKET-BOTTOM PLATE	020-0634-00	1	1	1	1	1	1	1	1	1	1	1	1	1	1	1	1	1	1	1	
0636	GASKET-HOUSING COVER	020-0636-00	1	1	1	1	1	1	1	1	1	1	1	1	1	1	1	1	1	1	1	
0638	GASKET-TERM PLATE	020-0638-00	1	1	1	1	1	1	1	1	1	1	1	1	1	1	1	1	1	1	1	
0664	GASKET VALVE PLATE (LASER)																					
	4DH (25 H.P.) / 4DL	020-0664-03							2	2	2				2	2	2	2				
	4DJ / 4DT	020-0664-05					2	2				2	2	2					2	2	2	
	4DA	020-0664-07	2	2	2	2																
	4DH (15 H.P.)	020-0664-17						2	2	2												
0719	COVER STATOR																					
	10 UP TO 15 H.P.	005-0719-00	1	1	1				1	1	1				1	1	1	1				
	20 H.P.		1	1	1	1																
	20 UP TO 25 H.P.	005-0720-00				1	1	1	1	1								1	1	1		
20 H.P.											1	1	1									

Ref. No.	Description	Part No.	Compressor Model																			
			4DA1A	4DA3A	4DAGA	4DAJA	4DB3A	4DBGA	4DH1A	4DH3A	4DHGA	4DJ1A	4DJ3A	4DJGA	4DL1A	4DL3A	4DL8A	4DLGA	4DT1A	4DT3A	4DTGA	
2038	2000-TSE-TXE	046-2038-14	1																			
	1500-150E-TSE	046-2038-15						1					1	1								
	1000-1010-TSE	046-2038-16	1	1																		
	3000-300E-FSD	046-2038-21									1	1										
	1500-150E-FSD-FSM	046-2038-27						1	1				1	1		1						
	2500-250E-ES8	046-2038-30						1														
	100E-FSD	046-2038-33		1	1																	
	2500-250E-FSD / FXD	046-2038-34							1	1												
	1500-ES8	046-2038-35											1			1						
	2000-TSK	046-2038-43									1											
	101E-TSK	046-2038-41		1																		
	2200-220E-TSK	046-2038-45				1	1										1	1	1			
	1500-TSE	046-2038-46						1														
	2200-200E-TSE	046-2038-47				1						1							1			
	2500-TSE / TXE	046-2038-48							1													
	2000-200E-FSD	046-2038-50		1	1						1		1									
	2200-220E-2500-FSD / FXD	046-2038-51				1													1	1		
2200-ES8	046-2038-55																	1	1			
2042	ROTOR - EMERSON																					
	1500-TSE	047-2041-01						1														
	2200-220E-FSD / TSK	047-2042-05				1	1									1	1	1				
	2000-200E-FSD / TSE / TSK	047-2042-07				1					1		1									
	2500-TSE / TXE	047-2042-08							1													
	220E-FSD	047-2042-10		1	1																	
2200-ES8	047-2042-13																	1	1			
2661	VALVE PLATE KIT (DELTA)																					
	1000-100E-FSD / TSE / TSK /		2	2	2																	
	1010-TSE			2																		
	101E-TSK			2																		
	1500-150E-FSD / TSE / TSK							2	2				2	2	2	2						
	1500-ES8	998-2661-26											2		2							
	2000-200E-FSM / TSK					2					2		2									
	2200-220E-FSD / TSK																2	2	2			
	2200-ES8																2	2				
	3000-FSD											2										
	150E-FSM									2												
2000-200E-FSD / FSM / TSE /										2	2											
TSK / TXE	998-2661-27		2	2	2																	
2200-220E-FSD / TSE / TSK				2		2	2					2										
2500-250E-FSD / FXD / TSE /								2	2	2												
TSK / TXE																						

Ref. No.	Description	Part No.	Compressor Model																		
			4DA1A	4DA3A	4DAGA	4DAJA	4DB3A	4DBGA	4DH1A	4DH3A	4DHGA	4DJ1A	4DJ3A	4DJGA	4DL1A	4DL3A	4DL8A	4DLGA	4DT1A	4DT3A	4DTGA
2661	2500-ES8	998-2661-27							2												
	3000-300E-FSD / TSE / TSK / TXE / TXK										2	2									
3009	ROTOR - AOS																				
	2000-FSD / TSK / TXK	047-3009-01	1	1	1	1															
	1000-FSD	047-3009-08	1																		
3059	STATOR-AOS																				
	2500-FXD	046-3059-51						1													
	2000-FSD	046-3059-52	1																		
	2000-TSK / TXK	046-3059-62		1	1	1															

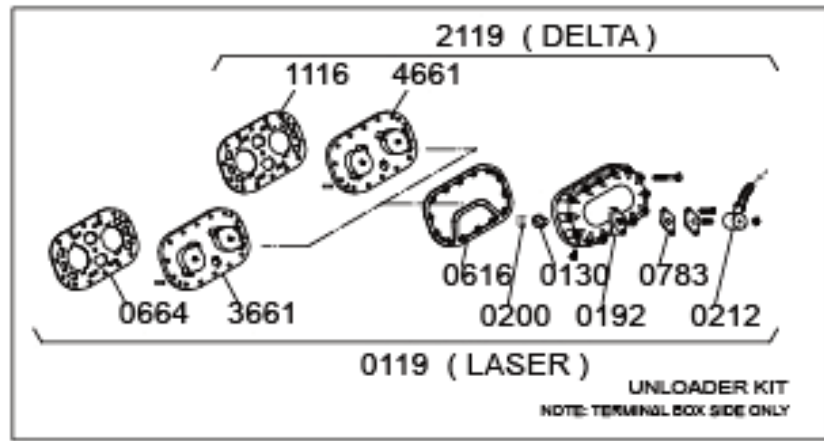
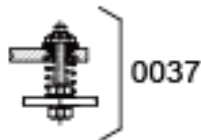
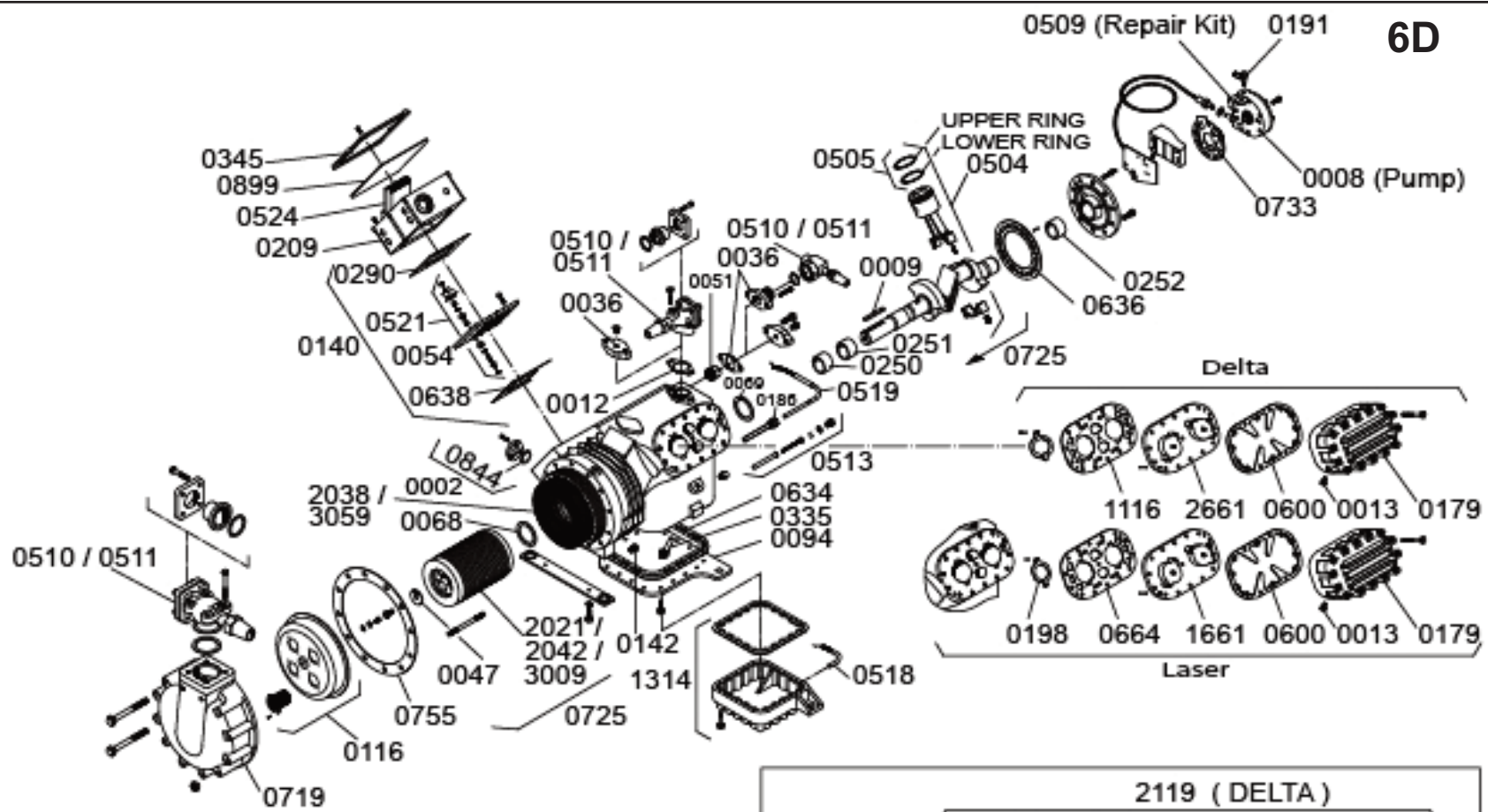
* Note : For laser models replace a "A" in the fifth position by a dash " - " e.g. : 4DH3 - 3500 - FSD

Ref. No.	Description	Part No.	Compressor Model																							
			4DC3A	4DE1A	4DE3A	4DE5A	4DE8A	4DEGA	4DK1A	4DK3A	4DKGA	4DN1A	4DN3A	4DNGA	4DP1A	4DP3A	4DP8A	4DPGA	4DR1A	4DR3A	4DR8A	4DRGA	4DS1A	4DS3A		
MODELS WITH UNLOADER																										
0119	UNLOADER KIT (LASER)		XX = 22 : 24 V / 23 : 120 V / 24 : 240 V / 25 : 440 V																							
	4DB to 4DC	998-0119-XX	1	1	1	1	1	1	1	1	1	1	1	1	1	1	1	1	1	1	1	1	1	1		
	4DA to 4DE																									
	4DH to 4DK																									
	4DA to 4DN																									
	4DL to 4DP																									
	4DJ to 4DR																									
4DT to 4DS						1	1	1	1	1																
0130	PISTON UNLOADER	998-0130-00	1	1	1	1	1	1	1	1	1	1	1	1	1	1	1	1	1	1	1	1	1	1		
0192	HEAD CYLINDER UNLOADER	002-0192-01		1		1			1			1			1			1			1			1		
		002-0336-01	1		1		1	1		1	1		1	1	1		1	1	1		1	1	1	1		
EXCEPT : 4D E8A 200E TSK & 4D KGA 2500 FSD : 002-0160-00 / 002-0192-01																										
0200	SPRING UNLOADER	006-0200-00	1	1	1	1	1	1	1	1	1	1	1	1	1	1	1	1	1	1	1	1	1	1		
0212	UNLOADER VALVE		XX = 02 : 120 V / 03 : 240 V																							
		998-0212-XX	1		1	1	1	1	1	1	1	1	1	1	1	1	1	1	1	1	1	1	1	1	1	
0616	GASKET CY. HEAD UNLOADER	020-0616-00	1	1	1	1	1	1	1	1	1	1	1	1	1	1	1	1	1	1	1	1	1	1		
0783	GASKET UNLOADER VALVE	020-0783-00	1	1	1	1	1	1	1	1	1	1	1	1	1	1	1	1	1	1	1	1	1	1		
1314	DEEP SUMP KIT																									
	2000-FSD	998-1314-00				1																				
	1500-150E-TSK															1										
	2000-200E-TSK				1	1														1						
STD. VALVE PLATE																					1					
1661 (LASER)	1000-100E-1500-150E-2200-2500-250E-FSD	998-1661-26 (LASER)								1	1	1	1		1		1					1	1			
	150E-FSM								1	1																
	1000-101E-1500-150E-2200-220E-TSE	998-2661-26 (DELTA)							1			1			1							1	1			
	1000-101E-1500-150E-200E-2200-220E-TSK								1	1		1	1		1		1				1			1		
	2500-250E-3000-ES8	998-1661-27 (LASER) 998-2661-27 (DELTA)								1											1					
	2000-200E-2200-2500-3000-300E-FSD			1	1	1		1	1	1	1							1	1		1					
	2000-2500-3000-FXD				1				1	1									1							
	200E-FSM																				1		1			
200E-220E-3000-TSE			1		1															1						
2000-200E-2200-220E-2500-250E-270E-3000-TSK			1		1	1	1	1	1	1									1	1						
3000-TXE																					1					
2000-3000-TXK					1															1	1					

Ref. No.	Description	Part No.	Compressor Model																							
			4DC3A	4DE1A	4DE3A	4DE5A	4DE8A	4DEGA	4DK1A	4DK3A	4DKGA	4DN1A	4DN3A	4DNGA	4DP1A	4DP3A	4DP8A	4DPGA	4DR1A	4DR3A	4DR8A	4DRGA	4DS1A	4DS3A		
2119	UNLOADER KIT (DELTA)	998-2119-XX	XX = 22 : 24 V / 23 : 120 V / 24 : 240 V / 25 : 440 V																							
	4DB to 4DC		1	1	1	1	1	1	1	1	1	1	1	1	1	1	1	1	1	1	1	1	1	1		
	4DA to 4DE																									
	4DH to 4DK																									
	4DA to 4DN																									
	4DL to 4DP																									
	4DJ to 4DR																									
4DT to 4DS					1	1	1	1	1																	
3661 (LASER) 4661 (DELTA)	UNLOADER VALVE PLATE	998-1661-25 (LASER) 998-2661-25 (DELTA)								1	1	1	1	1	1								1			
	1000-100E-1500-150E-2200-12500-250E-FSD									1	1															
	150E-FSM								1	1																
	1000-101E-1500-150E-2200-220E-TSE								1			1			1								1	1		
	1000-101E-1500-150E-200E-2200-220E-TSK							1	1		1	1		1	1					1				1		
	2500-250E-3000-ES8								1										1							
	2000-200E-2200-2500-3000-300E-FSD			1	1	1		1	1	1	1							1	1			1				
	2000-2500-3000-FXD		998-1661-28 (LASER)						1	1								1								
	200E-FSM		998-2661-28 (DELTA)																1			1				
	200E-220E-3000-TSE			1		1													1							
2000-200E-2200-220E-2500-250E-270E-3000-TSK		1		1	1	1	1	1	1								1	1								
3000-TXE																		1								
2000-3000-TXK				1													1	1								

* Note : For laser models replace a "A" in the fifth position by a dash "-" e.g. : 4DH3 - 3500 - FSD

6D



Ref. No.	Description	Part No.	Compressor Model																
			6DB3A	6DG3A	6DG8A	6DH1A	6DH3A	6DHGA	6DJ1A	6DJ3A	6DJGA	6DL1A	6DL3A	6DL8A	6DLGA	6DT1A	6DT3A	6DTGA	
0002	SIGHT GLASS KIT	998-0002-02	1	1	1	1	1	1	1	1	1	1	1	1	1	1	1	1	
0006	GASKET CIRCULAR	020-0006-47	1	1	1	1	1	1	1	1	1	1	1	1	1	1	1	1	
0007	GASKET CIRCULAR	020-0006-52	1	1	1	1	1	1	1	1	1	1	1	1	1	1	1	1	
0008	OIL PUMP KIT	998-0008-33	1	1	1	1	1	1	1	1	1	1	1	1	1	1	1	1	
0009	KEY-ECCENTRIC SHAFT ALL 20 / 27 H.P.	075-0009-00			1	1						1	1	1	1				
	ALL B3A	075-0003-12	1																
	ALL THE REST	075-0009-03		1	1	1	1	1	1	1	1	1	1	1	1	1	1	1	
0012	GASKET-SERVICE VALVE	020-0012-09	1	1	1	1	1	1	1	1	1	1	1	1	1	1	1	1	
0013	SCREW-HEX HD CAP	100-0013-69	1	1	1	1	1	1	1	1	1	1	1	1	1	1	1	1	
0036	ROTALOCK ADAPTER KIT	998-0036-00	1	1	1	1	1	1	1	1	1	1	1	1	1	1	1	1	
0057	SPACER-MOUNTING ASSM ALL 20 / 27 H.P.	527-0042-00			1	1						1	1	1	1				
	ALL 6DJ / 6DT	527-0080-00						1	1	1					1	1	1		
	ALL THE REST	527-0057-00	1	1	1	1	1	1											
0047	WASHER-ROTOR	102-0047-01	1	1	1	1	1	1	1	1	1	1	1	1	1	1	1	1	
0051	PRESS RELIEF VALVE KIT	998-0051-00	1	1	1	1	1	1	1	1	1	1	1	1	1	1	1	1	
0054	BOARD-PILOT TERM ASSM	580-0054-00	1	1	1	1	1	1	1	1	1	1	1	1	1	1	1	1	
0068	WASHER-THRUST	102-0068-00	1	1	1	1	1	1	1	1	1	1	1	1	1	1	1	1	
0069	WASHER-THRUST	102-0068-01	1	1	1	1	1	1	1	1	1	1	1	1	1	1	1	1	
0094	FLAT BOTTOM ALL 6DB / 6DG / 6DH / 6DL / (EXCEPT 6DL8)	003-0094-00	1	1	1	1	1	1				1	1		1				
	DEEP SUMP KIT								1	1	1			1		1	1	1	
0095	ALL 6DJ / 6DL8 / 6DT	998-1314-00							1	1	1			1		1	1	1	
0116	SHELL-STRAINER ASSM ALL 6DG / 6DJ	548-0825-00		1	1				1	1	1								
	ALL THE REST	548-0116-00	1			1	1	1				1	1	1	1	1	1	1	
	TERMINAL PLATE GROUP																		
0140	2000-FSD	521-0140-00			1														
	200E-FSM					1													
	200E-TSE					1													
	3000-FSD	521-0140-01															1		
	3000-TSE		1																
	3500-FSD / FSE / FSU / TSE			1		1	1	1											
	300E-FSD / TSE		1																
	350-FSD / FSU / TSE			1			1	1											
	4000-FSD / FSE / FSU / TSE								1	1									
400E-FSD / FSU								1											
ALL ES8 (EXCEPT 6D F1A 3000 ES8)	521-0141-01						1												

Ref. No.	Description	Part No.	Compressor Model																
			6DB3A	6DG3A	6DG8A	6DH1A	6DH3A	6DHGA	6DJ1A	6DJ3A	6DJGA	6DL1A	6DL3A	6DL8A	6DLGA	6DT1A	6DT3A	6DTGA	
0140	20 H.P. AND UP - TSK	521-0142-00				1						1	1	1	1				
	30 H.P. - TSK.															1	1	1	
	3000-TSK		1																
	3500-TSK / TSN	521-0142-01		1	1	1	1												
	350E-TSK / TSN			1															
	4000-TSN								1	1									
0142	VALVE OIL CHECK ASSM	510-0142-00	1	1	1	1	1	1	1	1	1	1	1	1	1	1	1	1	
0160	HEAD CYLINDER STD.	002-0335-00	3	3	3		3	3		3	3		3	3	3		3	3	
		002-0160-00				3			3			3				3			
0186	HEATER-SLEEVE	030-0186-00	1	1	1	1	1	1				1	1		1				
0191	VALVE-SCHRADER TEE	510-0191-00	1	1	1	1	1	1	1	1	1	1	1	1	1	1	1	1	
0198	LASER REED																		
	ALL 6D L / 6D T	998-0198-20										3	3	3	3	3	3	3	
	ALL 6D B / 6D G / 6D H / 6D J	998-0198-25	3	3	3	3	3	3	3	3	3								
0209	BOX-TERMINAL																		
	ALL FSU	062-0208-00		1						1									
	ALL THE REST	062-0209-00	1	1	1	1	1	1	1	1	1	1	1	1	1	1	1	1	
0250	BEARING REAR MAIN	035-0250-00	1	1	1	1	1	1	1	1	1	1	1	1	1	1	1	1	
0251	BEARING FRONT MAIN	035-0251-00	2	2	2	2	2	2	2	2	2	2	2	2	2	2	2	2	
0290	GASKET -TERMINAL BOX																		
	3000-3500-4000-ES8									1									
	2000-2700-3500-4000-FSD	020-0290-00				1		1	1										
	3500-4000-TSE					1		1											
	2700-3000-3500-TSK					1					1				1				
	ALL THE REST	020-0766-00	1	1	1	1	1	1	1	1	1	1	1	1	1	1	1	1	
0335	SERV CHECK VALVE KIT	998-0335-00	1	1	1	1	1	1	1	1	1	1	1	1	1	1	1	1	
0345	COVER TERMINAL BOX																		
	ALL FSU	005-0430-00		1						1									
	ALL THE REST	005-0345-00	1	1	1	1	1	1	1	1	1	1	1	1	1	1	1	1	
0504	PISTON & ROD ASSM KIT	998-0504-39				6	6	6				6	6	6	6				
		998-0504-53							6	6	6					6	6	6	
		998-0504-66		6	6														
		998-0504-67		6															
0505	RING PISTON																		
	LOWER RING	025-0002-02	6			6	6	6				6	6	6	6				
		025-0002-15							6	6	6					6	6	6	
		025-0002-37		6	6														
	UPPER RING	025-0088-02	6			6	6	6				6	6	6	6				
025-0088-15								6	6	6					6	6	6		
	025-0088-37		6	6															

Ref. No.	Description	Part No.	Compressor Model																
			6DB3A	6DG3A	6DG8A	6DH1A	6DH3A	6DHGA	6DJ1A	6DJ3A	6DJGA	6DL1A	6DL3A	6DL8A	6DLGA	6DT1A	6DT3A	6DTGA	
0509	OIL PUMP PACKS	995-0509-01	1	1	1	1	1	1	1	1	1	1	1	1	1	1	1	1	
	SPRING-OIL RELIEF VALVE	006-0202-00	1	1	1	1	1	1	1	1	1	1	1	1	1	1	1	1	
	SHAFT-OIL PUMP	007-0290-00	1	1	1	1	1	1	1	1	1	1	1	1	1	1	1	1	
	PIN-DOWEL	011-0089-00	1	1	1	1	1	1	1	1	1	1	1	1	1	1	1	1	
	GASKET-O RING	020-0003-28	1	1	1	1	1	1	1	1	1	1	1	1	1	1	1	1	
	GASKET-O RING	020-0003-29	1	1	1	1	1	1	1	1	1	1	1	1	1	1	1	1	
	GASKET-CIRCULAR	020-0006-13	1	1	1	1	1	1	1	1	1	1	1	1	1	1	1	1	
	GASKET-SENTRONIC SENSOR	020-0297-13	1	1	1	1	1	1	1	1	1	1	1	1	1	1	1	1	
	RING-REVERSING	025-0077-00	1	1	1	1	1	1	1	1	1	1	1	1	1	1	1	1	
	IMPELLER-OUTER	038-0038-00	1	1	1	1	1	1	1	1	1	1	1	1	1	1	1	1	
IMPELLER-INNER	038-0040-00	1	1	1	1	1	1	1	1	1	1	1	1	1	1	1	1		
0510	SERVICE VALVES																		
	SUCTION																		
	ALL	998-0510-20	1	1	1	1	1	1	1	1	1	1	1	1	1	1	1		
	DISCHARGE VALVE																		
	2000-FSD	998-0510-46			1														
	200E-FSM / TSE / TSK				1														
	2700-TSK										1	1	1	1					
	270E-TSK													1					
	3000-FSD / TSK														1	1	1		
	300E-FSD / TSK															1	1		
	3500-TSE / TSK / TXE / TXK					1													
	4000-ES8 / FSD									1									
	3000-TSE / TSK			1															
	300E-FSD / TSE			1															
3500-FSD / FSU / TSE / TSN / TSK	998-0510-66		1	1		1	1												
350E-FSD / FSU / TSE / TSN			1			1	1												
4000-FSU / TSE / TSN									1	1									
400E-FSD / FSU									1										
0511	SUCT & DISCH VALVE KIT																		
	2000-FSD	998-0500-12			1														
	200E-FSM / TSE / TSK				1														
	2700-TSK										1	1	1	1					
	270E-TSK													1					
	3000-FSD / TSK														1	1	1		
	300E-FSD / TSK															1	1		
	3500-TSE / TSK					1													
	4000-ES8 / FSD									1									
	3000-TSE / TSK			1															
300E-FSD / TSE	998-5100-36		1																
3500-FSD / FSU / TSE / TSN / TSK			1	1		1	1												

Ref. No.	Description	Part No.	Compressor Model																
			6DB3A	6DG3A	6DG8A	6DH1A	6DH3A	6DHGA	6DJ1A	6DJ3A	6DJGA	6DL1A	6DL3A	6DL8A	6DLGA	6DT1A	6DT3A	6DTGA	
0511	350E-FSD / FSU / TSE / TSN	998-5100-36	1			1	1												
	4000-FSU / TSE / TSN								1	1									
	400E-FSD / FSU									1									
0513	OIL SCREEN KIT	998-0513-03	1	1	1	1	1	1	1	1	1	1	1	1	1	1	1	1	
0518	HEATER-CC 100 W / 120 V (-00) , 100 W / 240 V (-01) , 100 W / 480 V (-02)																		
	DEEP SUMP KIT	918-0518-00						1	1	1			1		1	1	1		
		918-0518-01																	
		918-0518-02																	
0519	HEATER-CC 100 W / 120 V (-00) , 100 W / 240 V (-01)																		
	FLAT BOTTOM	918-0028-00	1	1	1	1	1	1				1	1		1				
		918-0028-01																	
0521	TERMINAL PACKS																		
	2700-270E-3000-300E-FSD	995-0521-05															1	1	
	2000-FSD					1													
	200E-FSM						1												
	3000-300E-3500-350E-4000-400E-FSD / FSU	995-0521-06	1	1			1	1	1	1									
	200E-2700-3000-300E-TSE	995-0521-08					1										1		
	350E-TSE	995-0521-09					1												
	3000-300E-3500-350E-4000-400E-ES8 / TSE / TXE		1	1		1		1	1	1									
	3500-TSE						1												
	200E-2700-270E-3000-300E-TSK											1	1	1	1	1		1	
3500-TSK							1												
3000-300E-3500-350E-TSK	995-0521-11	1			1														
3500-350E-4000-400E-TSN			1	1	1				1	1									
0524	SOLID STATE MODULE KIT																		
	ALL	998-0524-10	1	1	1	1	1	1	1	1	1	1	1	1	1	1	1	1	
0600	GASKET-CYLINDER HEAD	020-0600-00	3	3	3	3	3	3	3	3	3	3	3	3	3	3	3	3	
0634	GASKET-BOTTOM PLATE	020-0634-00	1	1	1	1	1	1	1	1	1	1	1	1	1	1	1	1	
0635	GASKET DEEP SUMP																		
	ALL 6DJ / 6DL8A / 6DT	020-0635-00							1	1	1			1		1	1	1	
0636	GASKET-HOUSING COVER	020-0636-00	1	1	1	1	1	1	1	1	1	1	1	1	1	1	1	1	
0638	GASKET-TERM PLATE	020-0638-00	1	1	1	1	1	1	1	1	1	1	1	1	1	1	1	1	
0664	GASKET VALVE PLATE (LASER)	020-0664-03	3			3	3	3				3	3	3	3				
		020-0664-05							3	3	3					3	3	3	
		020-0664-14		3	3														
0720	COVER STATOR																		
	ALL 20 / 27 H.P.	005-0720-00				1	1					1	1	1	1				
	30 H.P.(ESX / ES8 / FSD / TSE / / TSK)														1	1	1		

Ref. No.	Description	Part No.	Compressor Model															
			6DB3A	6DG3A	6DG8A	6DH1A	6DH3A	6DHGA	6DJ1A	6DJ3A	6DJGA	6DL1A	6DL3A	6DL8A	6DLGA	6DT1A	6DT3A	6DTGA
0720	ALL THE REST	005-0721-00	1	1	1	1	1	1	1	1	1							
0727	CRANKSHAFT KIT																	
	ALL 20 / 27 H.P.	998-0727-06				1	1					1	1	1	1			
	ALL B3A / W3A / YGA / Y3A	998-0726-03	1															
0733	ALL THE REST	998-0727-05		1	1	1	1	1	1	1	1					1	1	1
	GASKET-OIL PUMP	020-0733-00	1	1	1	1	1	1	1	1	1	1	1	1	1	1	1	1
0755	GASKET-STATOR COVER																	
	(ALL 6D E AND 6D F, CANT : 2)	020-0755-00	1	1	1	1	1	1	1	1	1	1	1	1	1	1	1	1
0844	SEAL-SIGHT GLASS	020-0844-04	1	1	1	1	1	1	1	1	1	1	1	1	1	1	1	1
0899	DIAGRAM-WIRING																	
	ALL ES8	052-0897-00						1										
	3010-ESX																1	
	ALL TSN / TSK	052-0898-00	1	1	1	1	1			1	1	1	1	1	1	1	1	1
1116	ALL FSD / FSM / FSU / TSE	052-0899-00	1	1		1	1	1	1								1	1
	GASKET VALVE PLATE (DELTA)	020-1116-01	3			3	3	3				3	3	3	3			
		020-1116-03							3	3	3					3	3	3
1661		020-1116-07		3	3													
	VALVE PLATE KIT (LASER)																	
	ALL 6D L / 6D T	998-1661-26										3	3	3	3	3	3	3
2021	ALL 6D B / 6D G / 6D H / 6D J	998-1661-27	3	3	3	3	3	3	3	3								
	ROTOR - CEC																	
	4000-ES8 / FSD	047-2021-06							1									
	3500-FSD / FSU / TSE / TSK / TSN	047-2021-22		1	1		1	1										
	350E-FSD / FSU / TSE / TSN			1			1	1										
	4000-TSN									1	1							
	3000-FSD / TSK	047-2021-23														1	1	1
	300E--FSD / TSK																1	1
	3500-350E-TSE			1														
	4000-FSU / TSE	047-2021-27								1								
	400E-FSD / FSU									1								
	3000-300E-FSD / TSE / TSK	047-2021-29	1															
	2038	STATOR - CEC																
3000-TSK		046-2038-03	1															
3500-TSK						1												
3000-TSK		046-2038-05													1		1	
300E-TSK																1		
3500-TSN				1	1													
350E-TSN		046-2038-06		1														
4000-TSN										1	1							
3000-TSE		046-2038-11	1															
300E-TSE	1																	

Ref. No.	Description	Part No.	Compressor Model																
			6DB3A	6DG3A	6DG8A	6DH1A	6DH3A	6DHGA	6DJ1A	6DJ3A	6DJGA	6DL1A	6DL3A	6DL8A	6DLGA	6DT1A	6DT3A	6DTGA	
2038	3500-TSE	046-2038-11				1	1												
	350E-TSE					1													
	4000-FSD	046-2038-17						1											
	300E-FSD		1																
	3500-FSD	046-2038-20					1												
	350E-FSD					1	1												
	3000-FSD	046-2038-21														1			
	300E-FSD																1		
	4000-ES8	046-2038-31						1											
	400E-FSD	046-2038-36							1										
	3500-TSE	046-2038-38	1																
	350E-TSE		1																
	4000-TSE								1										
	4000-400E-FSU	046-2038-39							1										
	3500-350E-FSU	046-2038-40	1																
	3500-TSK	046-2038-42			1														
	200E-TSK	046-2038-43				1													
	2700-270E-TSK	046-2038-44									1	1	1	1					
	200E-TSE	046-2038-47				1													
	3500-TSE	046-2038-49			1														
2000-FSD	046-2038-50			1															
200E-FSM					1														
2042	ROTOR - EMERSON																		
	3500-TSE / TSK	047-2042-00			1														
	2000-FSD	047-2042-01			1														
	200E-FSM					1													
	2700-270E-TSK	047-2042-06								1	1	1	1						
	200E-TSE / TSK	047-2042-11				1													
2661	VALVE PLATE KIT (DELTA)																		
	ALL 6DL / 6DT									3	3	3	3	3	3	3	3		
	3500-FSD	998-2661-26					3												
	3500-TSE						3												
	3500-TSN				3														
	350E-FSD						3												
	ALL 6D B3A /6D G3A /6D H3A /6D J	998-2661-27	3	3		3		3	3	3									
	2000-FSD					3													
3500-TSE / TSK					3														
3009	ROTOR - AOS																		
	3500-TSK	047-3009-23				1													
3059	STATOR-AOS																		
	3500-TSK	046-3059-48				1													
9505	COVER & BEARING KIT	995-0505-00	1	1	1	1	1	1	1	1	1	1	1	1	1	1	1		

* Note : For laser models replace a "A" in the fifth position by a dash " - " e.g. : 6DH3 - 3500 - FSD

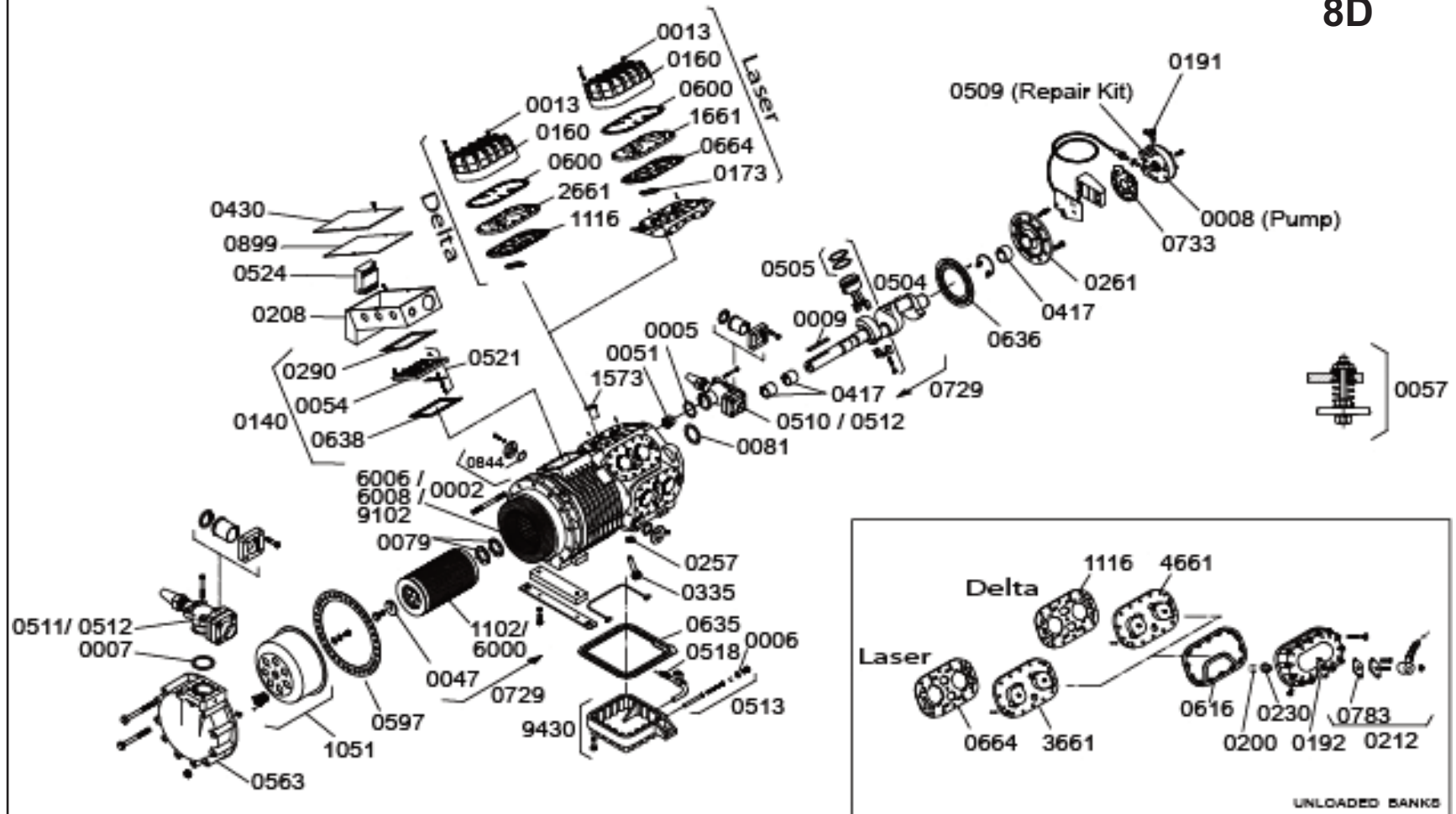
Ref. No.	Description	Part No.	Compressor Model													
			6DC1A	6DC3A	6DCGA	6DE1A	6DE3A	6DEGA	6DK1A	6DK3A	6DKGA	6DM3A	6DR1A	6DR3A	6DRGA	6DW3A
MODELS WITH ONE UNLOADER																
0119	UNLOADER KIT (LASER)	XX = 22 : 24 V / 23 : 120 V / 24 : 240 V / 25 : 440 V														
	6D L to 6D C															
	6D T to 6D E															
	6D H to 6D K	998-0119-XX	1	1	1	1	1	1	1	1	1	1	1	1	1	
	6D G to 6D M															
	6D J to 6D R															
	6D B to 6D W															
0130	PISTON UNLOADER	998-0130-00	1	1	1	1	1	1	1	1	1	1	1	1	1	
0160	HEAD CYLINDER STD.	002-0160-00	2			2			2				2			
		002-0335-00		2	2		2	2		2	2	2		2	2	2
0192	HEAD CYLINDER UNLOADER	002-0192-01	1			1			1				1			
		002-0336-01		1	1		1	1		1	1	1		1	1	1
0200	SPRING UNLOADER	006-0200-00	1	1	1	1	1	1	1	1	1	1	1	1	1	
0212	UNLOADER VALVE	XX = 02 : 120 V / 03 : 240 V														
		998-0212-XX	1	1	1	1	1	1	1	1	1	1	1	1	1	1
0616	GASKET CY. HEAD UNLOADER	020-0616-00	1	1	1	1	1	1	1	1	1	1	1	1	1	
0783	GASKET UNLOADER VALVE	020-0783-00	1	1	1	1	1	1	1	1	1	1	1	1	1	
1661 (LASER) 2661 (DELTA)	STD. VALVE PLATE	998-1661-26 (LASER)	2	2	2	2	2									
		998-2661-26 (DELTA)														
		998-1661-27 (LASER)					2	2	2	2	2	2	2	2		
		998-2661-27 (DELTA)														
2119	UNLOADER KIT (DELTA)	XX = 22 : 24 V / 23 : 120 V / 24 : 240 V / 25 : 440 V														
	6D L to 6D C															
	6D T to 6D E															
	6D H to 6D K	998-2119-XX	1	1	1	1	1	1	1	1	1	1	1	1	1	
	6D G to 6D M															
	6D J to 6D R															
	6D B to 6D W															

Ref. No.	Description	Part No.	Compressor Model														
			6DC1A	6DC3A	6DCGA	6DE1A	6DE3A	6DEGA	6DK1A	6DK3A	6DKGA	6DM3A	6DR1A	6DR3A	6DRGA	6DW3A	
3661 (LASER) 4661 (DELTA)	UNLOADER VALVE PLATE	998-1661-26 (LASER) 998-2661-26 (DELTA)	1	1	1	1	1	1									
		998-1661-27 (LASER) 998-2661-27 (DELTA)							1	1	1	1	1	1	1	1	1
* Note : For laser models replace a "A" in the fifth position by a dash " - " e.g. : 6DH3 - 3500 - FSD																	

Ref. No.	Description	Part No.	Compressor Model																	
			6DD1A	6DD3A	6DF1A	6DF1A	6DFGA	6DN3A	6DN3A	6DNGA	6DP1A	6DP3A	6DP5A	6DPGA	6DS1A	6DS3A	6DS6A	6DSGA	6DY3A	6DYGA
MODELS WITH ONE UNLOADER																				
0119	UNLOADER KIT (LASER)	XX = 22 : 24 V / 23 : 120 V / 24 : 240 V / 25 : 440 V																		
	6D L to 6D D																			
	6D T to 6D F																			
	6D G to 6D N	998-0119-XX	2	2	2	2	2	2	2	2	2	2	2	2	2	2	2	2	2	2
	6D H to 6D P																			
	6D J to 6D S																			
	6D B to 6D Y																			
0130	PISTON UNLOADER	998-0130-00	2	2	2	2	2	2	2	2	2	2	2	2	2	2	2	2	2	
0160	HEAD CYLINDER STD.	002-0160-00	1		1					1		1		1		1	1	1		
		002-0335-00		1		1	1	1	1		1		1		1		1	1	1	
0192	HEAD CYLINDER UNLOADER	002-0192-01	2		2					2		2		2		2				
		002-0336-01		2		2	2	2	2		2		2		2		2	2	2	
0200	SPRING UNLOADER	006-0200-00	2	2	2	2	2	2	2	2	2	2	2	2	2	2	2	2	2	
0212	UNLOADER VALVE	XX = 02 : 120 V / 03 : 240 V																		
		998-0212-XX	2	2	2	2	2	2	2	2	2	2	2	2	2	2	2	2	2	
0616	GASKET CY. HEAD UNLOADER	020-0616-00	2	2	2	2	2	2	2	2	2	2	2	2	2	2	2	2	2	
0783	GASKET UNLOADER VALVE	020-0783-00	2	2	2	2	2	2	2	2	2	2	2	2	2	2	2	2	2	
1661 (LASER) 2661 (DELTA)	STD. VALVE PLATE	998-1661-26 (LASER)	1	1	1	1	1													
		998-2661-26 (DELTA)																		
		998-1661-27 (LASER)						1	1	1	1	1	1	1	1	1	1	1	1	
		998-2661-27 (DELTA)																		
2119	UNLOADER KIT (DELTA)	XX = 22 : 24 V / 23 : 120 V / 24 : 240 V / 25 : 440 V																		
	6D L to 6D D																			
	6D T to 6D F																			
	6D G to 6D N	998-2119-XX	2	2	2	2	2	2	2	2	2	2	2	2	2	2	2	2	2	
	6D H to 6D P																			
	6D J to 6D S																			
	6D B to 6D Y																			

Ref. No.	Description	Part No.	Compressor Model																	
			6DD1A	6DD3A	6DF1A	6DF1A	6DFGA	6DN3A	6DN3A	6DN3A	6DP1A	6DP3A	6DP5A	6DPGA	6DS1A	6DS3A	6DS6A	6DSGA	6DY3A	6DYGA
3661 (LASER) 4661 (DELTA)	UNLOADER VALVE PLATE	998-1661-25 (LASER) 998-2661-25 (DELTA)	2	2	2	2	2													
		998-1661-28 (LASER) 998-2661-28 (DELTA)								2	2	2	2	2	2	2	2	2	2	2
* Note : For laser models replace a "A" in the fifth position by a dash " - " e.g. : 6DH3 - 3500 - FSD																				

8D



Ref. No.	Description	Part No.	Compressor Model				
			8DP1	8DP3	8DPG	8DS1	8DS3
0002	SIGHT GLASS KIT	998-0002-02	1	1	1	1	1
0005	GASKET CIRCULAR	020-0006-46	1	1	1	1	1
0006	GASKET CIRCULAR	020-0006-52	1	1	1	1	1
0007	GASKET CIRCULAR	020-0006-58	1	1	1	1	1
0008	OIL PUMP KIT	998-0008-33	1	1	1	1	1
0009	KEY-ECCENTRIC SHAFT	075-0009-05	1	1	1	1	1
0012	GASKET-SERVICE VALVE	020-0012-09	1	1	1	1	1
0013	SCREW-HEX HD CAP	100-0013-69	1	1	1	1	1
0047	WASHER-ROTOR	102-0047-01	1	1	1	1	1
0051	PRESS RELIEF VALVE KIT	998-0051-00	1	1	1	1	1
0054	BOARD-PILOT TERM ASSM	580-0054-00	1	1	1	1	1
0057	SPACER-MOUNTING GROUP	527-0115-00	1	1	1	1	1
0079	WASHER-THRUST	102-0079-00	2	2	2	2	2
0081	WASHER-THRUST	102-0081-00	1	1	1	1	1
0140	TERMINAL PLATE GROUP						
	ALL TS7	521-0189-00	1			1	1
	ALL TSK / TXK	521-0142-02	1	1		1	1
	ALL THE REST	521-0140-02	1	1	1	1	1
0160	HEAD CYLINDER STD.	002-0160-00	2			2	
		002-0335-00		2	2		2
0173	REED SUCTION VALVE	056-0173-04	8	8	8	8	8
0191	VALVE-SCHRADER TEE	510-0191-00	1	1	1	1	1
0192	HEAD CYLINDER UNLOADER	002-0192-01	2			2	
		002-0336-01		2	2		2
0200	SPRING UNLOADER	006-0200-00	2	2	2	2	2
0208	BOX-TERMINAL	062-0208-00	1	1	1	1	1
0212	UNLOADER VALVE	XX = 02 : 120 V / 03 : 240 V					
		998-0212-XX	2	2	2	2	2
0230	PISTON UNLOADER ASSM.	504-0230-00	2	2	2	2	2
0257	VALVE OIL CHECK ASSM	510-0257-00	1	1	1	1	1
0261	PLATE COVER GROUP	503-0261-01	1	1	1	1	1
0290	GASKET-TERMINAL BOX	020-0290-00	1	1	1	1	1
0335	SERV CHECK VALVE KIT	998-0335-00	1	1	1	1	1
0417	BEARING MAIN DU	035-0417-00	3	3	3	3	3
0430	COVER TERMINAL BOX	005-0430-00	1	1	1	1	1
0504	PISTON & ROD ASSM KIT						
	ALL S1 / S3	998-0504-47				8	8
	ALL P1 / P3 / PG	998-0504-52	8	8	8		
0505	RING PISTON						
	ALL P1 / P3 / PG	025-0062-00	16	16	16		
	ALL S1 / S3	025-0063-00				16	16

Ref. No.	Description	Part No.	Compressor Model				
			8DP1	8DP3	8DPG	8DS1	8DS3
0509	OIL PUMP PACKS	995-0509-01	1	1	1	1	1
	SPRING-OIL RELIEF VALVE	006-0202-00	1	1	1	1	1
	SHAFT-OIL PUMP	007-0290-00	1	1	1	1	1
	PIN-DOWEL	011-0089-00	1	1	1	1	1
	GASKET-O RING	020-0003-28	1	1	1	1	1
	GASKET-O RING	020-0003-29	1	1	1	1	1
	GASKET-CIRCULAR	020-0006-13	1	1	1	1	1
	GASKET-SENTRONIC SENSOR	020-0297-13	1	1	1	1	1
	RING-REVERSING	025-0077-00	1	1	1	1	1
	IMPELLER-OUTER	038-0038-00	1	1	1	1	1
IMPELLER-INNER	038-0040-00	1	1	1	1	1	
0510	SERVICE VALVES						
	DISCHARGE VALVE						
0511	ALL	998-0510-07	1	1	1	1	1
	SUCTION VALVE						
0512	ALL 8D S	998-0510-18				1	1
	ALL 8D-P	998-0510-19	1	1	1		
0513	SUCT & DISCH VALVE KIT						
	ALL 8D P	998-5100-30	1	1	1		
0518	ALL 8D S	998-5100-31				1	1
	OIL SCREEN KIT	998-0513-02	1	1	1	1	1
0518	HEATER-CC 100 W / 120 V (-00) , 100 W / 240 V (-01)						
	DEEP SUMP KIT	918-0518-00	1	1	1	1	1
0521	DEEP SUMP KIT	918-0518-01					
	TERMINAL PACKS						
	ALL FSD / TSE	995-0521-07	1	1	1	1	1
	ALL TSK / TXK	995-0521-12	1	1		1	1
0524	ALL TS7	995-0521-14	1			1	1
	SOLID STATE MODULE KIT						
0563	ALL (EXCEPT : 8D P1-5000-TXK)	998-0524-10	1	1	1	1	1
0597	COVER STATOR	005-0563-00	1	1	1	1	1
0600	GASKET STATOR COVER	020-0597-00	1	1	1	1	1
0616	GASKET CYLINDER HEAD	020-0600-00	2	2	2	2	2
0635	GASKET CY. HEAD UNLOADER	020-0616-00	2	2	2	2	2
0636	GASKET DEEP SUMP	020-0635-00	1	1	1	1	1
0638	GASKET-HOUSING COVER	020-0636-00	1	1	1	1	1
0664	GASKET-TERM PLATE	020-0638-00	1	1	1	1	1
	GASKET VALVE PLATE	020-0664-02	3	3	3		
0729	GASKET VALVE PLATE	020-0664-04				3	3
	CRANKSHAFT KIT	998-0729-00	1	1	1	1	1

Ref. No.	Description	Part No.	Compressor Model				
			8DP1	8DP3	8DPG	8DS1	8DS3
0733	GASKET-OIL PUMP	020-0733-00	1	1	1	1	1
0783	GASKET UNLOADER VALVE	020-0783-00	2	2	2	2	2
0844	SEAL-SIGHT GLASS	020-0844-04	1	1	1	1	1
0853	GASKET VALVE PLATE	020-0853-00	1	1	1		
		020-0853-01				1	1
0899	DIAGRAM-WIRING						
	ALL TS7	052-0896-00	1			1	1
	ALL TSK	052-0898-00	1	1		1	1
	ALL FSD / TSE	052-0899-00	1	1	1	1	1
	TXK	052-0764-00	1				
1051	SHELL-STRAINER ASSM	548-1051-00	1	1	1	1	1
1102	ROTOR	047-1102-00	1	1	1	1	1
1573	TUBE-SNORKEL ASSIST	528-1573-00	1	1	1	1	1
1661	VALVE PLATE KIT STD. (LOAD)	998-1661-31	2	2	2	2	2
1661 (LASER)	STD. VALVE PLATE	998-1661-31 (LASER)	2	2	2	2	2
2661 (DELTA)		998-2661-31 (DELTA)	2	2	2	2	2
3661 (LASER)	UNLOADER VALVE PLATE	998-1661-32 (LASER)	2	2	2	2	2
4661 (DELTA)		998-2661-32 (DELTA)	2	2	2	2	2
6000	ROTOR (ALL 5000 / 6000 EXCEPT ALL TS7)	047-6000-01	1	1	1	1	1
6008	STATOR SIEMENS (ALL 5000 / 6000 - TSE)	046-6000-08	1	1		1	1
6006	STATOR						
	ALL TSK / TXK	046-6000-05	1	1		1	1
	ALL 5000 / 6000 FSD	046-6000-07	1	1	1	1	1
9102	STATOR						
	ALL TSK / TXK	046-1102-04	1	1		1	1
	ALL FSD	046-1102-05	1	1	1	1	1
	ALL TSE	046-1102-06	1	1		1	1
	ALL TS7	046-1102-07	1			1	1
9430	PLATE-OIL SUMP ASSM	503-0430-00	1	1	1	1	1

* Note : For laser models replace a "A" in the fifth position by a dash " - " e.g. : 8DP3 - 5000 - TSE