



Sonesse® 30 Databook



Sonesse® 30 RTS

Somfy Systems, Inc., is a global leader in the manufacturing of strong, intelligent and quiet motors for both interior and exterior window coverings. For more than four decades, engineers at Somfy have been designing products for both the residential and commercial markets to motorize window coverings such as interior shades, wood blinds, draperies, awnings, rolling shutters, exterior solar screens, projection screens and more. Somfy motorization systems are easily integrated with security, HVAC, and lighting systems, providing total home or building automation. Somfy recently celebrated the production and sales, throughout the world, of 100 million motors since 1969. This accomplishment further reinforces that Somfy is the worldwide leader in the manufacturing of interior and exterior window covering motors.

100
MILLION
motors

WHY SOMFY?

Somfy has a committed Customer Support team comprised of Somfy motor and control specialists available for assistance:

Somfy Corporate Headquarters
800-22-SOMFY (76639)

General Customer Service
877-210-5327
CustomerService_us@somfy.com

Standard Purchase Order
Ordering_us@somfy.com

Rush Purchase Order
ExpeditedShippingOrders_us@somfy.com

Accounting Inquiries
AccountsReceivable@somfy.com

Technical Support
877 - 233 - 0019
TechnicalSupport_us@somfy.com

Warranty Claim Requests
us_Return@somfy.com

- Somfy has a production capacity of more than 43,000 motors per day.
- Somfy motors have over 600 standards approvals worldwide.
- Somfy has certified over 100 patents since the year 2000.
- Every Somfy motor goes through an extensive quality assurance process including testing in extreme environmental conditions, for electrostatic discharge, mechanical shock, and high life cycle.
- Somfy has a network of 15,000 trained professional installers throughout the world.



Somfy operates in 54 countries, with 68 subsidiaries, and 51 agencies spread across 5 continents. With 7 production centers, Somfy is an efficient and reactive industry leader. Thanks to its strict quality standards, Somfy is able to satisfy the needs of over 270 million users worldwide.



EXPERT

somfy®

Somfy understands that training and support are critical to success. Somfy's Expert 2.0 Program has been developed to provide a platform for those who want to enhance their expertise of motorization and control solutions. Contact Somfy directly or visit www.somfypro.com to learn more and sign up for training.

TABLE OF CONTENTS

INTRODUCTION	2
---------------------	----------

MOTOR SPECIFICATIONS

Sonesse® 30 RTS	3
Sonesse® 30 RS485	4
Sonesse® 30 DCT	5

CONTROL ACCESSORIES

Radio Technology Somfy® RTS	6
Digital Motor Interfaces	7
RS485	7
Wired Technology	7
TaHomA®	7

POWER AND WIRING ACCESSORIES

Transformers	8
Power/Control Distribution Panels	9
Power/Control Distribution Enclosure Options	10, 11
Sonesse® 30 RTS Control & Plug-in Style Power	12
Sonesse® 30 RTS Control & Power Distribution	13
Sonesse® 30 RS485 Control & Power Distribution	14, 15
Sonesse® 30 DCT Dry Contact & Plug-In Style Power	16
Sonesse® 30 DCT Dry Contact & Power Distribution	17

MECHANICAL ACCESSORIES, LIGHT GAP SPECIFICATIONS & BRACKET PROJECTIONS

Acmeda System	18, 19
Somfy Decorator Type	20, 21
RollEase® & Skyline	22, 23
Louvolite	24
Somfy® CTS 40	25
RollEase® Fascia	26
ZMC®	27

RollEase® is a registered trademark of RollEase Inc.

Crestron® is a registered trademark of Crestron Electronics, Inc.

ZMC® is a registered trademark of ZMC Window Coverings

Universal Remote Control, Inc.® is a trademark of Universal Remote Control, Inc.

Conveniently Quiet

This document is a presentation of the accessories and specifications related to the Somfy Sonesse® 30 range. It provides the technical information needed to order, fabricate, and sell the award-winning quiet motors. For additional information regarding any of the products in this document including motors, power sources, controls, interfaces etc., please reference www.somfypro.com, where detailed instructions are available for download.

The award winning Sonesse® 30 range is putting window coverings in motion with ultra-quiet precision. The motors are engineered with superior noise reduction technology and are barely heard from a distance of 3 feet.

The compact, low-profile Sonesse® 30 motors are designed for tubes as small as 1.5" in diameter and are easily concealed within headrails, cassette systems or smaller pocket sizes. The motors feature speed regulation for precise alignment of adjacent shades and are low-voltage which simplifies installation. The Sonesse® 30 motors are available with a variety of control options and easily integrate with home automation systems. They also feature the ability to adjust to precise intermediate positions for increased control flexibility.



Radio Technology Somfy® (RTS) allows wireless radio control of motorized window coverings via the RTS family of controls.



Communication via the industry standard RS485 which is compatible with the Somfy Digital Network™ (SDN) and also easily integrates with third party control systems.



Offers control via contact closure switching (dry contact).

Sonesse® 30 motors are designed to automate a broad range of window covering applications which include:

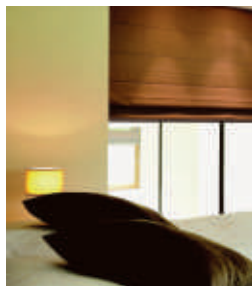
Solar/Roller Shades



Sheer Horizontal Shades



Roman/Woven Shades



Pleated/Cellular Shades



Horizontal Blinds



As with all Somfy products, the Sonesse® 30 motors are backed by a 5 year warranty.



WCMA Award Winner, for Most Innovative Overall design.

Sonesse® 30 RTS



Sonesse® 30 RTS

Part #1001524



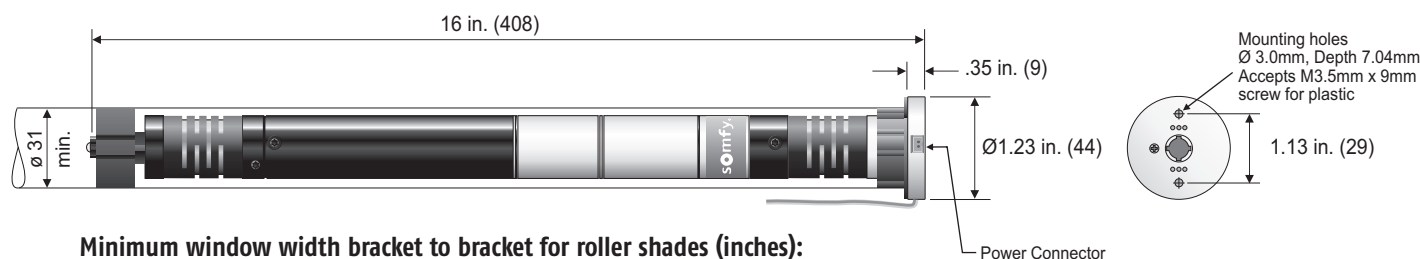
Radio Technology Somfy® (RTS) allows for wireless radio control of motorized window coverings via the RTS family of controls.

Technical features

Voltage Supply	DC	Temperature Working Range	32°F to 140°F (0°C to 60°C)
Index Protection Rating	IP 30	Insulation Class	Class III
Limit Switch Type	Electronic	Antenna	Must not come in contact with metal. May need to be repositioned for optimal range
Limit Switch Capacity	35 Turns		

NOTE: Power cable is included with motor.

Dimensions - in. (mm)



Minimum window width bracket to bracket for roller shades (inches):

Acmeda 44mm tube and hardware	18 5/8"
Rollease 1.5" tube w/Skyline Hardware	19 5/8"
Rollease 1.5" tube w/R8 Hardware	18 1/2"

Performances

	SONESSE® 30 RTS
Voltage*	24VDC
Motor Power Connection	2pin JST, 2mm pitch
Nominal load starting current *	1.8A for max. 300ms
Nominal load current *	.8A
Maximum current during programming *	3.2A for 300ms.
Torque	17.7 in. lbs. (2Nm)
Speed	6-28 rpm (programmable)
Thermal protection	2.5 minutes
Minimum inside diameter of tube	1.22 in. (31mm)
Sound level	44 dBA
RF control range (may vary)	65 ft.

* Regulated power supply required

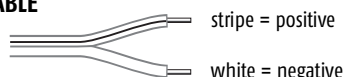
Fabrication Recommendations:

- Operational noise level is reduced when motor, tube, and mechanical accessories are properly adapted to motorized applications.
- Free play must be minimized between the accessories and the end product tube to ensure quiet performance of the motor.
- Interior Tube Diameter (ID) > 31mm must be respected.
- A motor crown adapter between motor and end product tube is required to ensure concentric operation of motor.
- ST30 Series Drive Stop and Screw (included with crown and drive), are recommended to prevent noise and drive wheel separation from motor shaft.

Included Cable

24V DC POWER CABLE

2 Conductor
7.5' Length



Sonesse® 30 RS485



Sonesse® 30 RS485

Part #1000658



Communication via RS485 which is compatible with the Somfy Digital Network™ (SDN) and also easily integrates with third party control systems.

Technical features

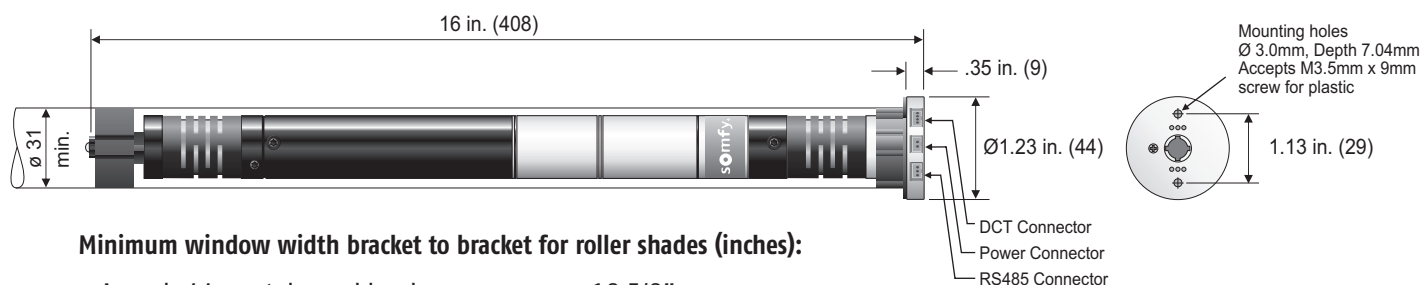
Voltage Supply	DC
Index Protection Rating	IP 30
Limit Switch Type	Digital
Limit Switch Capacity	35 Turns

Temperature Working Range 32°F to 140°F (0°C to 60°C)

Insulation Class Class III

NOTE: Power/Control motor cables are included with motor. Does not include Limit Setting Tool # 9014599 or Dry Contact Closure (DCT) Cable # 9014793 required for setting limits.

Dimensions - in. (mm)



Minimum window width bracket to bracket for roller shades (inches):

Acmeda 44mm tube and hardware	18 5/8"
Rollease 1.5" tube w/Skyline Hardware	19 5/8"
Rollease 1.5" tube w/R8 Hardware	18 1/2"

Performances

SONESSE® 30 RS485

Voltage*	24VDC
Motor power connector	2 pin JST, 2mm pitch
Motor RS485 connector	3 pin JST, 2mm pitch
Motor DCT connector	4 pin JST, 2mm pitch
Nominal load starting current *	1.8A for max. 300ms
Nominal load current *	.8A
Maximum current during programming *	3.2A for 300ms.
Torque	17.7 in. lbs. (2Nm)
Speed	6-28 rpm (programmable)
Thermal protection	2.5 minutes
Minimum inside diameter of tube	1.22 in. (31mm)
Sound level	44 dBA

* Regulated power supply required

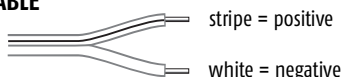
Fabrication Recommendations:

- Operational noise level is reduced when motor, tube, and mechanical accessories are properly adapted to motorized applications.
- Free play must be minimized between the accessories and the end product tube to ensure quiet performance of the motor.
- Interior Tube Diameter (ID) > 31mm must be respected.
- A motor crown adapter between motor and end product tube is required to ensure concentric operation of motor.
- ST30 Series Drive Stop and Screw (included with crown and drive), are recommended to prevent noise and drive wheel separation from motor shaft.

Included Cables

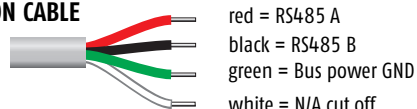
24V DC POWER CABLE

2 Conductor
7.5' Length



RS485 COMMUNICATION CABLE

3 Conductor
7.5' Length



Sonesse® 30 DCT

**DRY
CONTACT**

Sonesse® 30 DCT

Part #1000668



Offers control via contact closure switching (dry contact)

Technical features

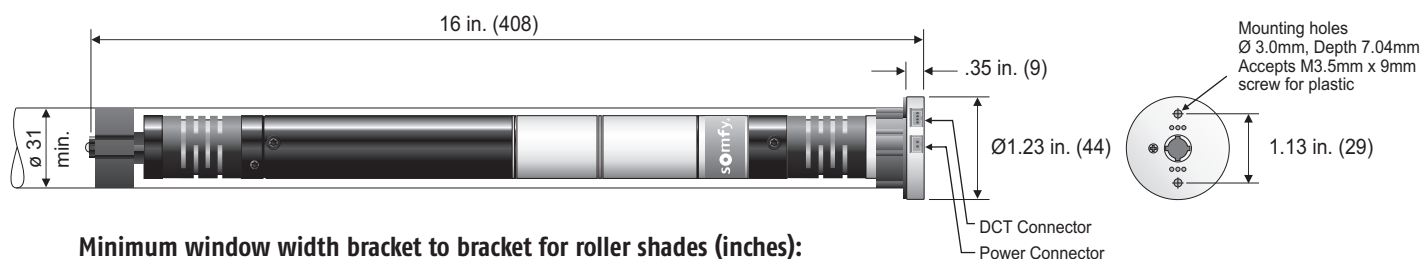
Voltage Supply	DC
Index Protection Rating	IP 30
Limit Switch Type	Dry Contact
Limit Switch Capacity	35 Turns

Temperature Working Range 32°F to 140°F (0°C to 60°C)

Insulation Class Class III

NOTE: Power/Control motor cables are included with motor. Does not include Limit Setting Tool # 9014599 required for setting limits.

Dimensions - in. (mm)



Minimum window width bracket to bracket for roller shades (inches):

Acmeda 44mm tube and hardware	18 5/8"
Rollease 1.5" tube w/Skyline Hardware	19 5/8"
Rollease 1.5" tube w/R8 Hardware	18 1/2"

Performances

SONESSE® 30 DCT

Voltage*	24VDC
Motor power connector	2 pin JST, 2mm pitch
Motor DCT connector	4 pin JST, 2mm pitch
Nominal load starting current *	1.8A for max. 300ms
Nominal load current *	.8A
Maximum current during programming *	3.2A for 300ms.
Torque	17.7 in. lbs. (2Nm)
Speed	6-28 rpm (programmable)
Thermal protection	2.5 minutes
Minimum inside diameter of tube	1.22 in. (31mm)
Sound level	44 dBA

* Regulated power supply required

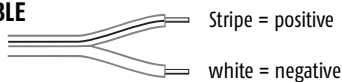
Fabrication Recommendations:

- Operational noise level is reduced when motor, tube, and mechanical accessories are properly adapted to motorized applications.
- Free play must be minimized between the accessories and the end product tube to ensure quiet performance of the motor.
- Interior Tube Diameter (ID) > 31mm must be respected.
- A motor crown adapter between motor and end product tube is required to ensure concentric operation of motor.
- ST30 Series Drive Stop and Screw (included with crown and drive), are recommended to prevent noise and drive wheel separation from motor shaft.

Included Cables

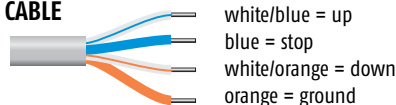
24V DC POWER CABLE

2 Conductor
7.5' Length



DCT COMMUNICATION CABLE

4 Conductor
7.5' Length



Sonesse® 30 Control Accessories

RADIO TECHNOLOGY SOMFY® (RTS)



TELIS HAND-HELD REMOTE COLLECTION



Telis 1 RTS Pure
Single Channel
Remote
1810632



Telis 4 RTS Pure
Five Channel
Remote
1810633



Telis 1 RTS Silver
Single Channel
Remote
1810639



Telis 4 RTS Silver
Five Channel
Remote
1810641



Telis 1 RTS Lounge
Single Channel
Remote
1810650



Telis 4 RTS Lounge
Five Channel
Remote
1810652



Telis 1 RTS Patio
Single Channel
Remote
1810643



Telis 4 RTS Patio
Five Channel
Remote
1810645



Telis 1 Modulis
RTS Pure with
Scroll Wheel
1811234



Telis 4 Modulis
RTS Pure with
Scroll Wheel
1811235



Telis 1 Modulis
RTS Silver with
Scroll Wheel
1810976



Telis 4 Modulis
RTS Silver with
Scroll Wheel
1810664



Telis 1 Modulis
RTS Lounge with
Scroll Wheel
1810976



Telis 4 Modulis
RTS Lounge with
Scroll Wheel
1810664



Telis 16 Channel RTS
Pure Remote with
On-screen display
1811081



Telis 16 Channel RTS
Silver Remote with
On-screen display
1811082

DECOFLEX WIREFREE™ WALL SWITCHES



DecoFlex 1 Channel RTS
WireFree™ Wall Switch



DecoFlex 2 Channel RTS
WireFree™ Wall Switch



DecoFlex 3 Channel RTS
WireFree™ Wall Switch



DecoFlex 4 Channel RTS
WireFree™ Wall Switch



DecoFlex 5 Channel RTS
WireFree™ Wall Switch

- Wall Switches shown in white. Also available in black, ivory, and almond finishes.
- Shown assembled with printed channel buttons.
- Custom engraved buttons are also available.



BLACK



IVORY



ALMOND (1 & 5 channel only)

TABLE TOP ACCESSORIES



DecoFlex WireFree™
RTS Tabletop
Accessory Black
1811051*



DecoFlex WireFree™
RTS Tabletop
Accessory Silver
1810972*



DecoFlex WireFree™
RTS Tabletop
Accessory White
1811185*

*DecoFlex Switch sold separately from Table Top Accessory.

CHRONIS COMFORT RTS TIMER



Chronis Comfort RTS
24 hr./7 day WireFree™ Timer
1805176

INDOOR RTS SENSORS



Sunis Indoor
WireFree™ RTS
9013707



Thermo Sunis Indoor
WireFree™ RTS
9013708

RTS REPEATER



RTS Repeater
(extends RTS range)
1810791

RTS MOTOR INTERFACES



ZRTSI



Z-Wave® to RTS® Interface
1870202

16 CHANNEL RTS INTERFACE



Universal RTS Interface 16-Channel
(Converts IR, RS232, RS485 to RTS)
1810872

DRY CONTACT



RTS Dry Contact Interface
Single Channel
1810493

DIGITAL MOTOR INTERFACES



ZDMI



Z-Wave® to Digital Motor
Interface
1870171

ZBDMI



ZigBee® to Digital Motor
Interface
1870220

RS485



IP INTERFACE



Internet Protocol (IP) Interface
with Conversion Kit
1810870

SMART SWITCHES



ILT Programmable Decoflex
Network Switch-6 button
1811252



ILT Programmable Decoflex
Network Switch-8 button
1811253



ILT Programmable
Network Switch-3 button
1810827



ILT Programmable
Network Switch-6 button
1810828

WIRED TECHNOLOGY



DRY CONTACT SWITCHES



Sonesse® 30 DCT White Wall Switch
1800219



Sonesse® 30 DCT Ivory Wall Switch
1800220

LIMIT SETTING TOOL



Limit Setting Tool required for setting limits
for Sonesse® 30 DCT and Sonesse® 30 RS485 motors.
9014599

TaHoma® SOMFY'S TOTAL HOME AUTOMATION SOLUTION

The Sonesse® 30 range works seamlessly with TaHoma® – Somfy's total home automation solution. Using Z-Wave®, an interoperable, 2-way RF mesh networking technology, TaHoma enables users to control, schedule, and monitor their Somfy motorized products, lights, and thermostats from Smartphones, Tablets and PCs.

Use the Z-Wave to RTS Interface (ZRTSI) to translate TaHoma's Z-Wave commands when using the Sonesse® RTS motor.

Visit www.somfytahoma.com for an interactive online demonstration.



TaHoma®



Sonesse® 30 Power Accessories – Transformers

Plug-In

Plug-In Wall Type

# of Motors	Dimensions	Nominal Load	Part #
1 Motor	3.5" x 2.3" x 1.3"	24 VDC 1.66A	1822209

With 15 ft. cable – 18 AWG



Plug-In Floor Type

# of Motors	Dimensions	Nominal Load	Part #
1 Motor	4" x 2.5" x 1.3"	24 VDC 2.5A	1822116

With 6 ft. AC cable

With 6 ft. cable – 18 AWG



Plug-In Table/Shelf Type

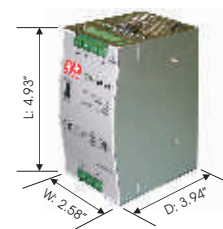
# of Motors	Dimensions	Nominal Load	Part #
3 Motors	2" x 7.1" x 8.5"	24 VDC 5A	1822118
6 Motors	2.7" x 7.1" x 8.5"	24 VDC 10A	1822119
9 Motors	2.7" x 7.1" x 8.5"	24 VDC 15A	1822122
12 Motors	2.7" x 7.1" x 8.5"	24 VDC 20A	1822123



Wired

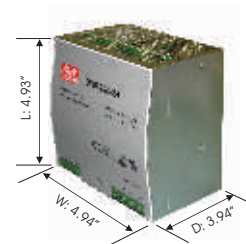
Din Rail Mount

# of Motors	Dimensions	Nominal Load	Part #
3 Motors	4.93" x 2.58" x 3.94"	24 VDC 5A	9011994



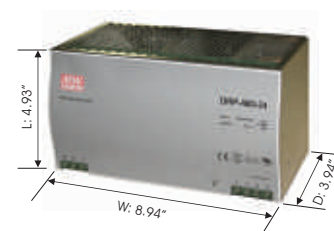
Din Rail Mount

# of Motors	Dimensions	Nominal Load	Part #
6 Motors	4.93" x 4.94" x 3.94"	24 VDC 10A	9011995



Din Rail Mount

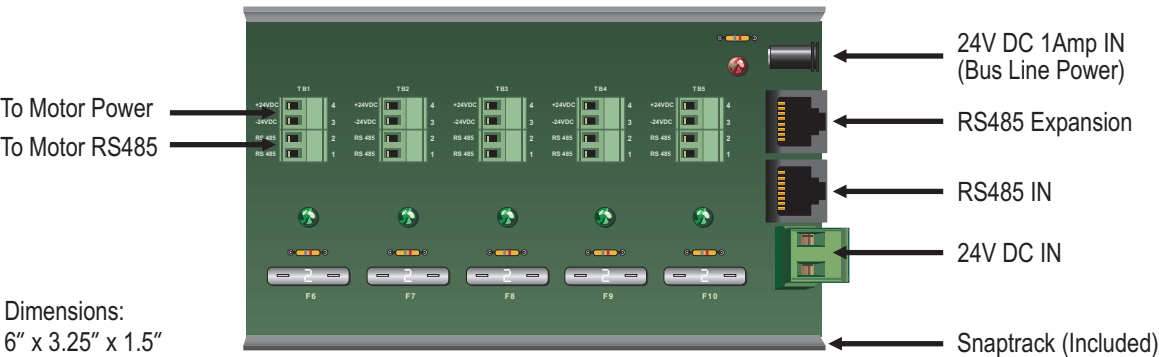
# of Motors	Dimensions	Nominal Load	Part #
12 Motors	4.93" x 8.94" x 3.94"	24 VDC 20A	9014245



Power/Control Distribution Panels

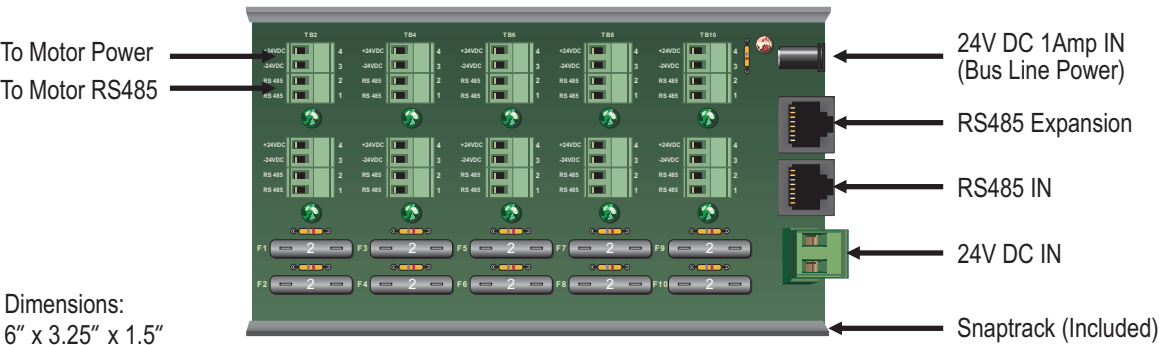
5 Motor Power/Control Distribution Panel

4 Conductor, #1870193



10 Motor Power/Control Distribution Panel

4 Conductor, #1870194



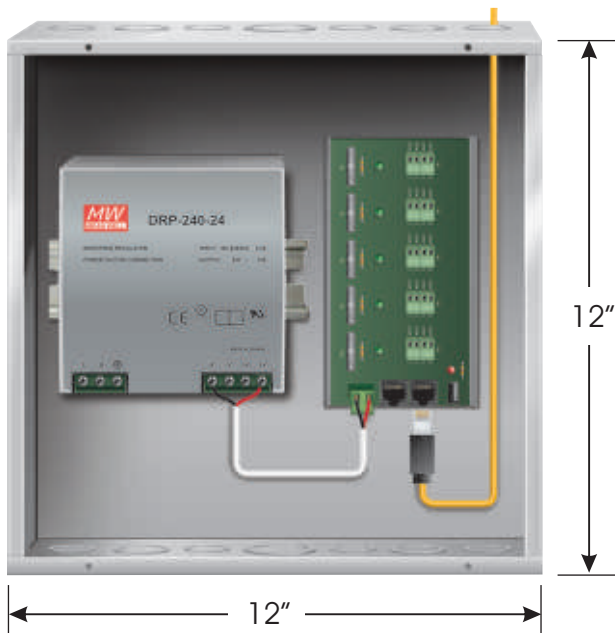
Optional Mounting Accessory



Sonesse® 30 Power/Control Motor Cables (optional)	
Sonesse® 30 Dry Contact Closure (DCT) Cable (7.5' length)	# 9014793
Sonesse® 30 RS485 Control Cable (7.5' length)	# 9015842
Sonesse® 30 24V DC 2 Conductor Power Cable (7.5' length)	# 9014794

Power/Control Distribution Enclosure Options

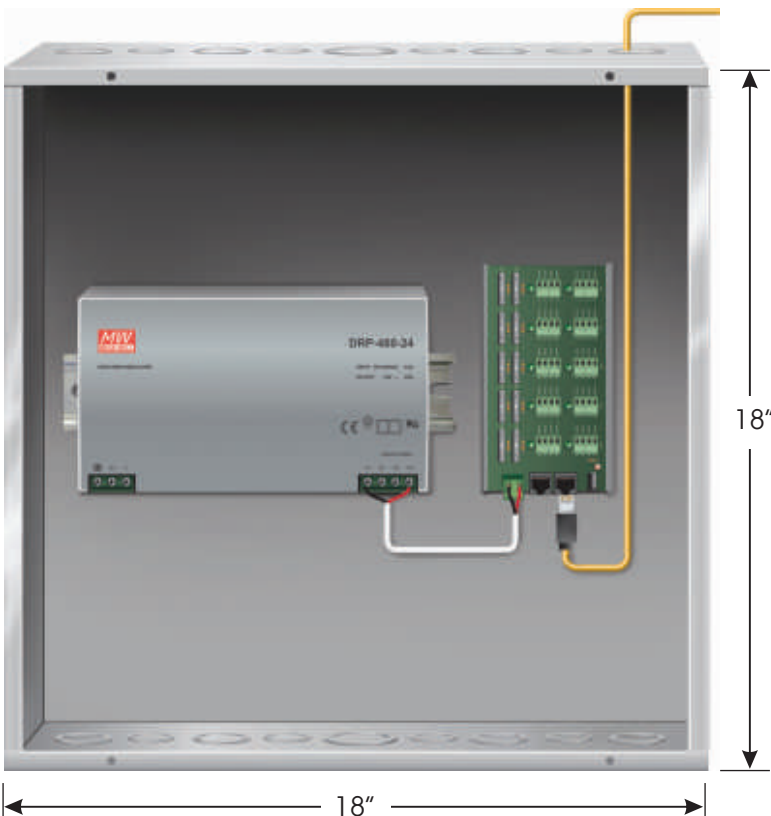
5 MOTOR - #1870196



Kit Includes:

- 1 - 5 Motor Power/Control Distribution Panel - #1870193
- 1 - 24V DC 10 Amp Power Supply #9011995
- 1 - 12" x 12" x 6.25" Enclosure

10 MOTOR - #1870192

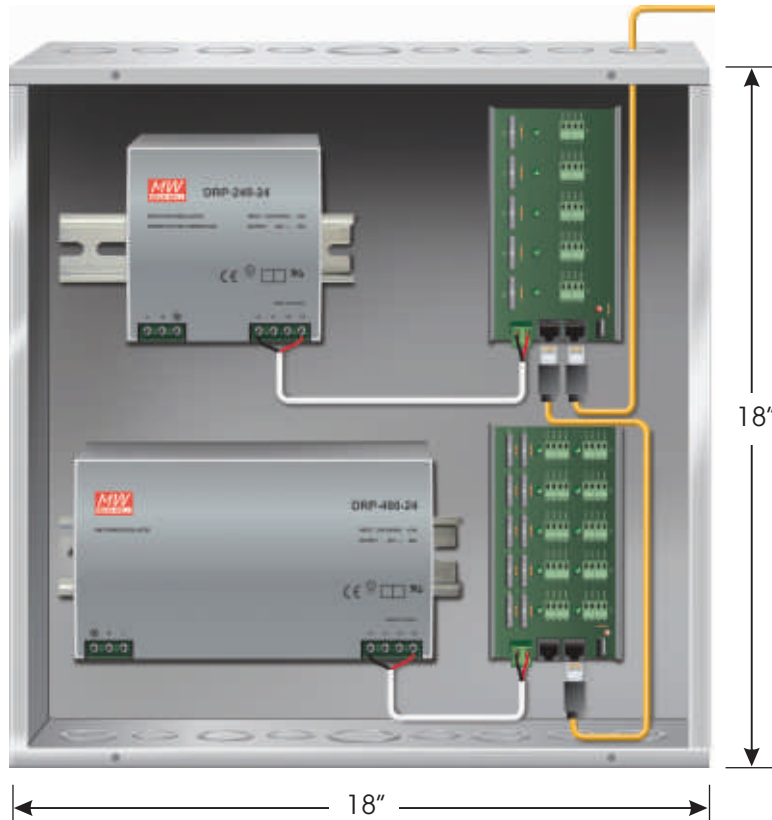


Kit Includes:

- 1 - 10 MotorPower/Control Distribution Panel - #1870194
- 1 - 24V DC 20 Amp Power Supply #9014245
- 1 - 18" x 18" x 6.25" Enclosure

NOTE: For detailed connections please reference pp. 14 -15

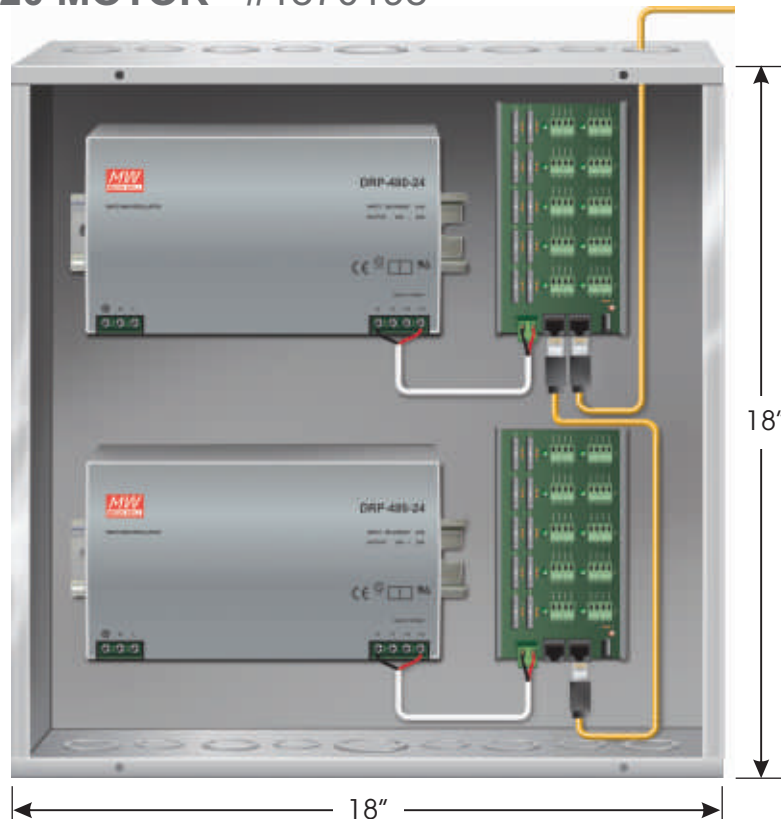
15 MOTOR - #1870197



Kit Includes:

- 1 - 5 Motor Power/Control
Distribution Panel - #1870193
- 1 - 10 Motor Power/Control
Distribution Panel - #1870194
- 1 - 24V DC 10 Amp Power Supply
#9011995
- 1 - 24V DC 20 Amp Power Supply
#9014245
- 1 - 18" x 18" x 6.25" Enclosure

20 MOTOR - #1870198

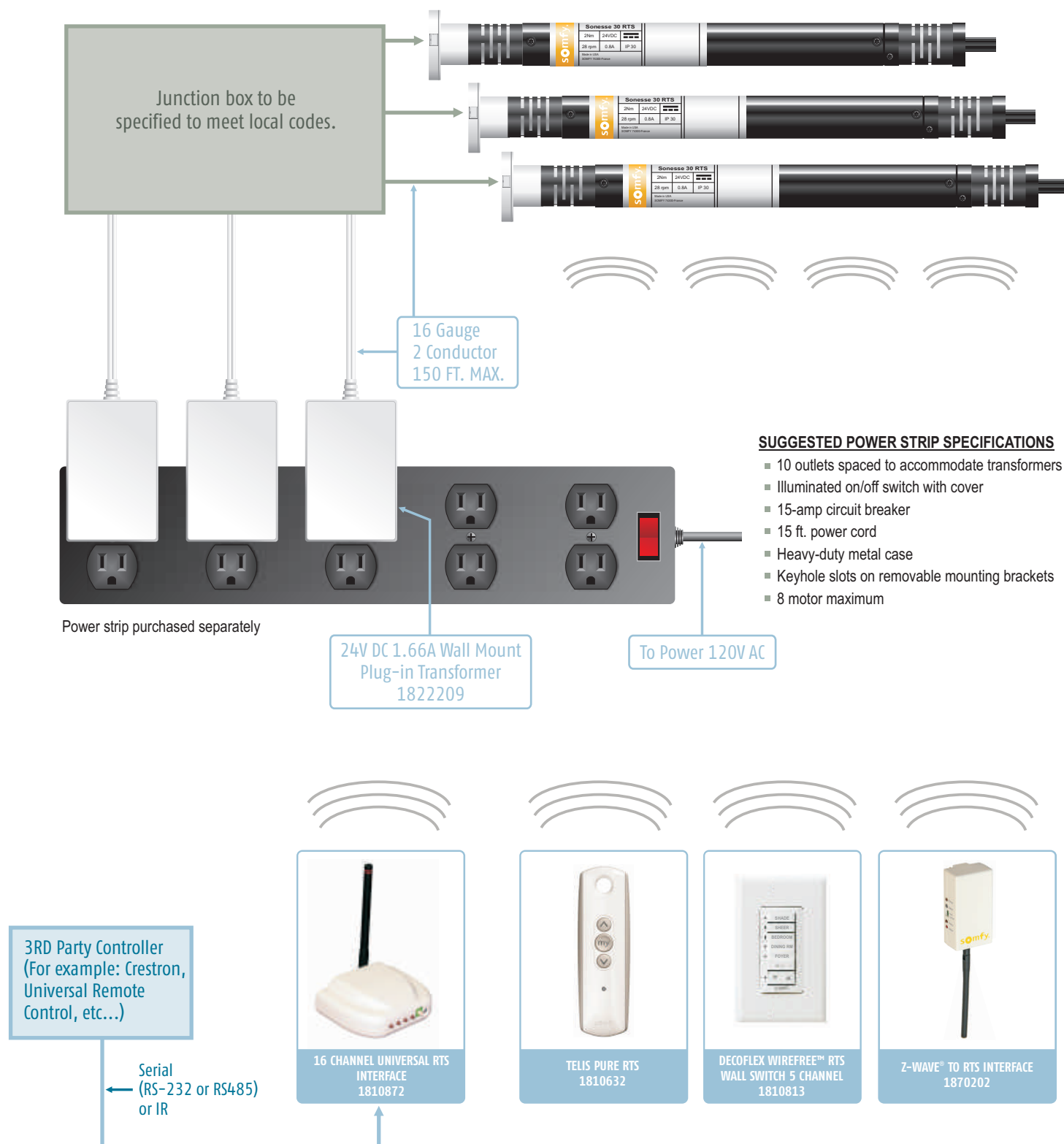


Kit Includes:

- 2 - 10 MotorPower/Control
Distribution Panel - #1870194
- 2 - 24V DC 20 Amp Power Supply
#9014245
- 1 - 18" x 18" x 6.25" Enclosure

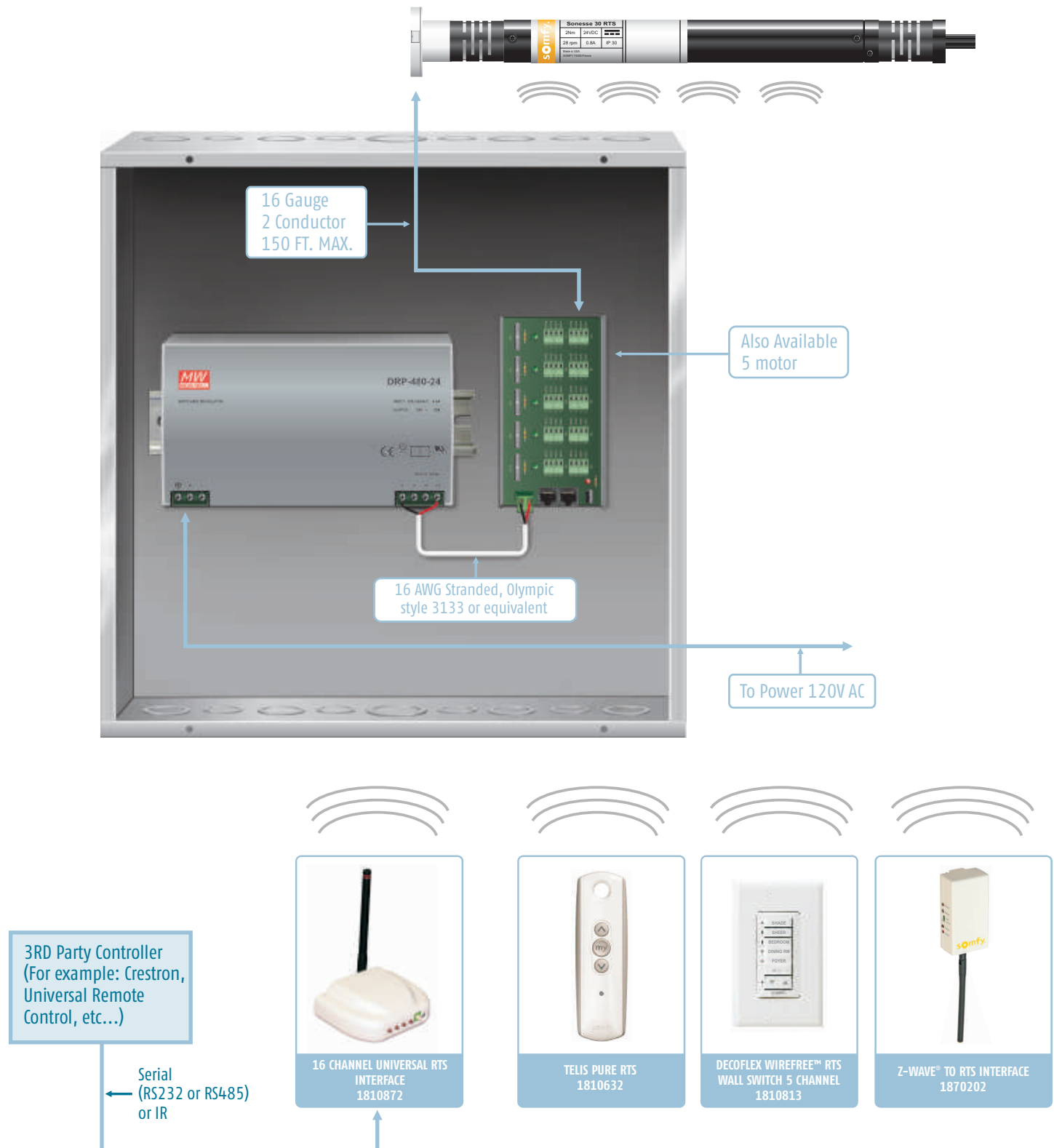
NOTE: For detailed connections please reference pp. 14 -15

APPLICATION EXAMPLE



For additional RTS controls see page 6

APPLICATION EXAMPLE



For additional RTS controls see page 6

Sonesse® 30 RS485 Control & Power Distribution

Sonesse® 30 RS485

Control Cable (7.5' length)

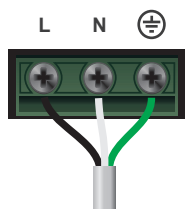
(included w/motor)

See Detail Page 15

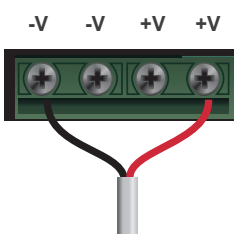
See Motor Connection Types
Page 15

Sonesse® 30
24V DC 2 Conductor
Power Cable

RS485 OUT
RS485 IN



NOTE: AC wiring in accordance with local codes

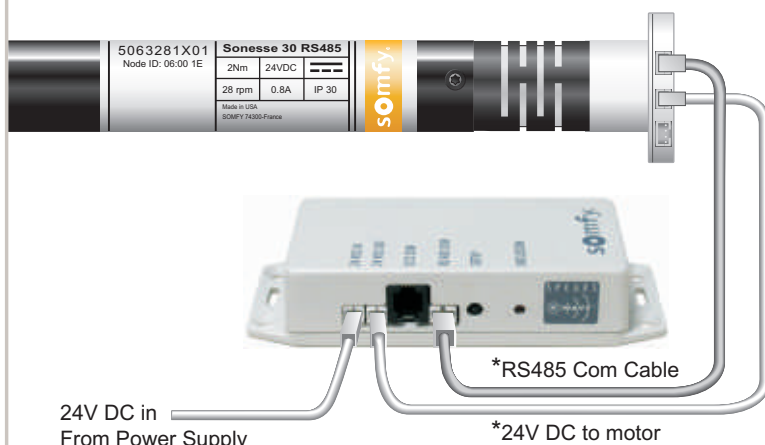


16 AWG 2
Conductor
RED +
BLACK -

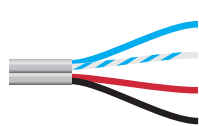
Bus Power 24V,
2.1mm x 5.5mm Connector
Wattage based on number of
taps/switches



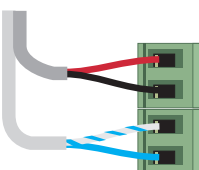
Connection to Z-Wave® or ZigBee® Digital Motor Interface



* Included with Z-Wave® to Digital Motor Interface
and the ZigBee® Digital Motor Interface.



16 AWG 2 Conductor
24/2 pr
Coleman Model 97295
or equal



+ 24V DC
- 24V DC
RS485 B
RS485 A



16 AWG Stranded,
Olympic style 3133
or equivalent
RED +
BLACK -



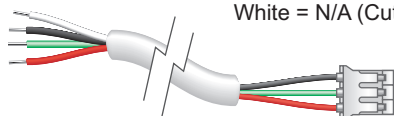
Pin Out
Pin 1 - RS485 A
Pin 2 - RS485 B
Pin 3 - Not connected
Pin 4 - Bus power +24V
Pin 5 - Bus power +24V
Pin 6 - Not connected
Pin 7 - Bus power GND
Pin 8 - Bus power GND



16 AWG Stranded,
Olympic style 3133
or equivalent

Sonesse® 30
RS485 Control Cable
(included with motor)

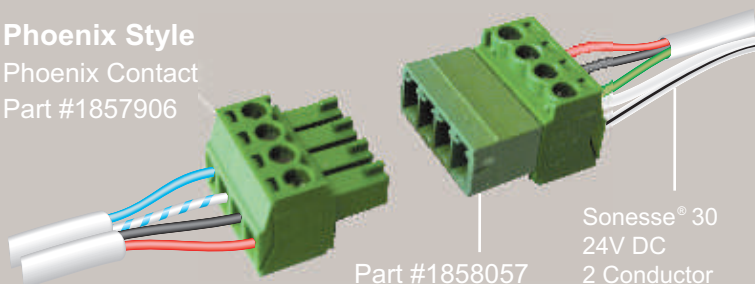
Red = A
Black = B
Green = Ground
(Connected to power -)
White = N/A (Cut off)



Motor Connection Types

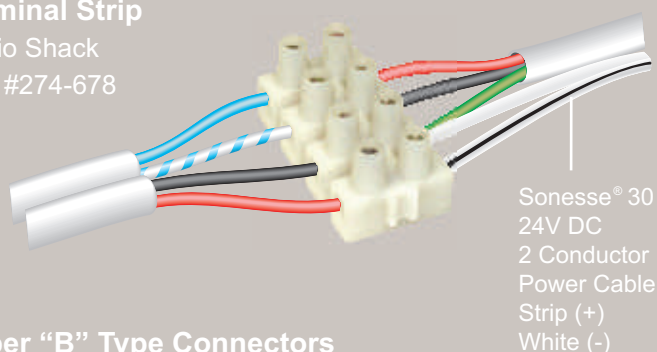
Phoenix Style

Phoenix Contact
Part #1857906



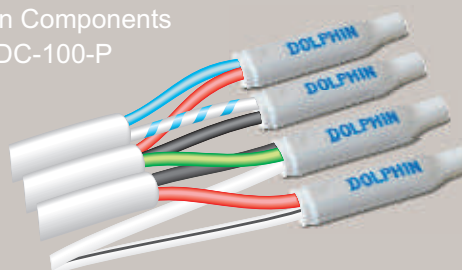
Terminal Strip

Radio Shack
Part #274-678



Super "B" Type Connectors

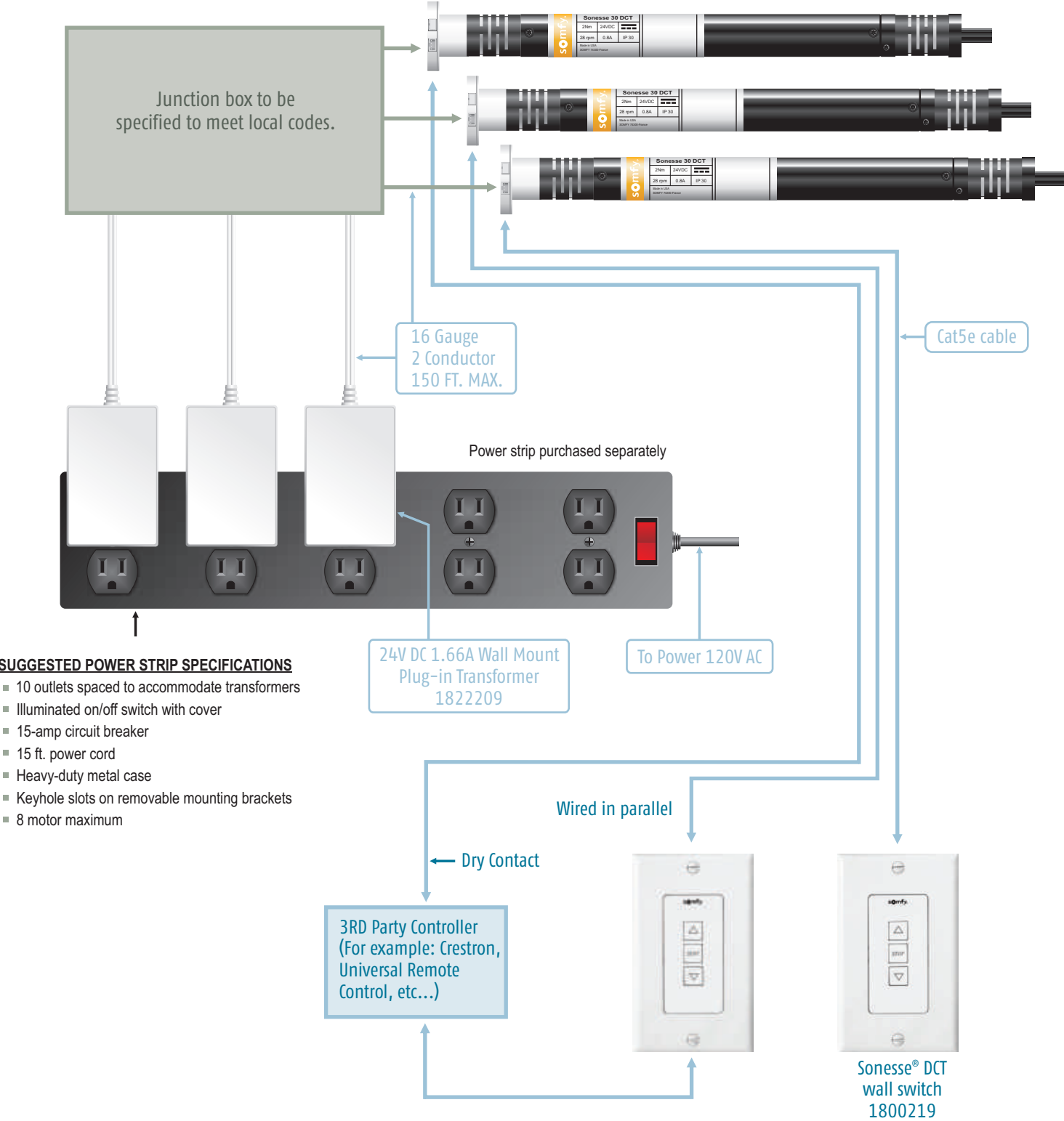
Dolphin Components
Part #DC-100-P



Sonesse® 30 DCT Dry Contact & Plug-In Style Power

DRY
CONTACT

APPLICATION EXAMPLE

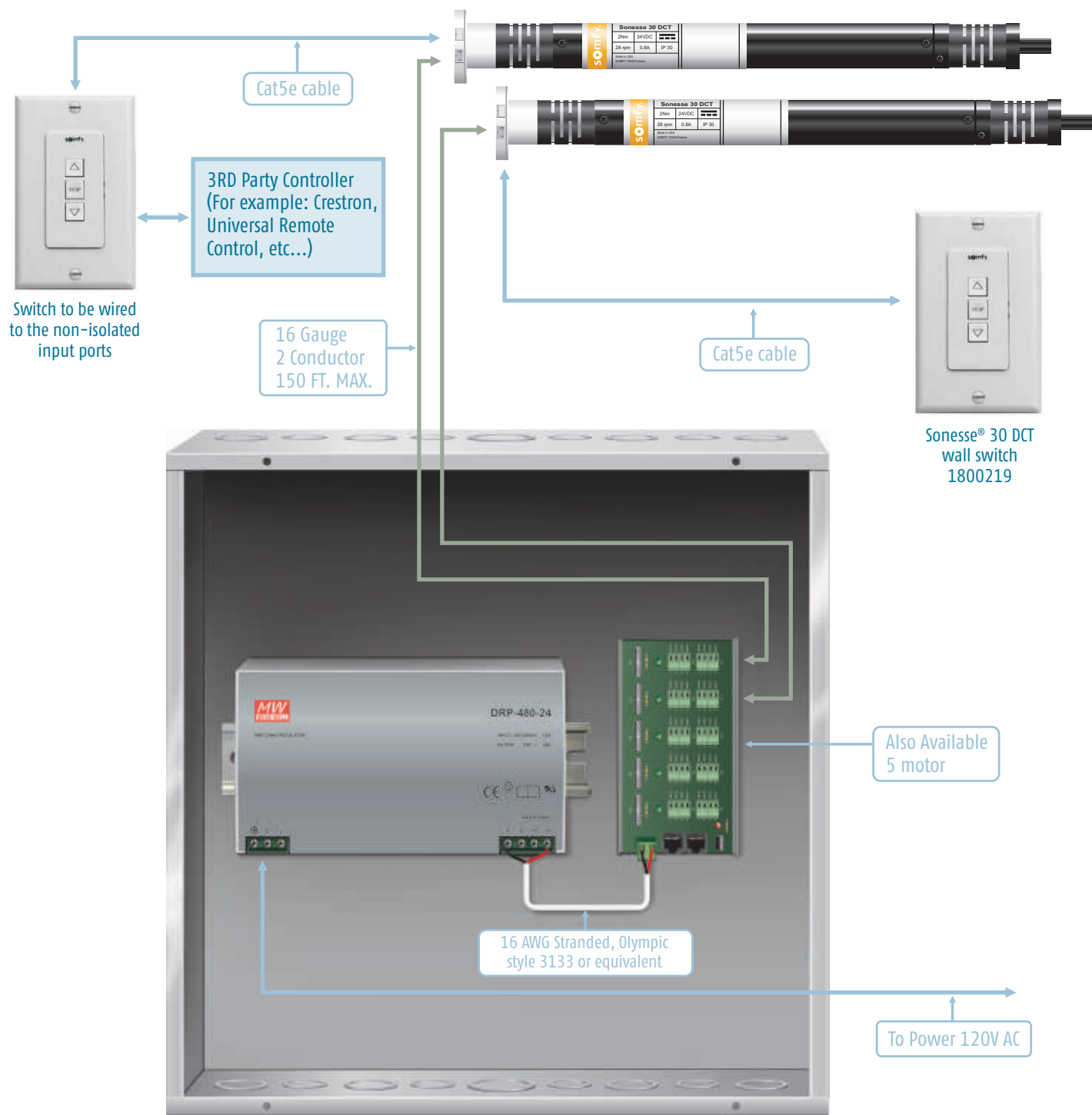


NOTE: A maximum of 8 motors can be wired to 1 switch or Dry Contact input.

Sonesse® 30 DCT Dry Contact & Power Distribution

DRY
CONTACT

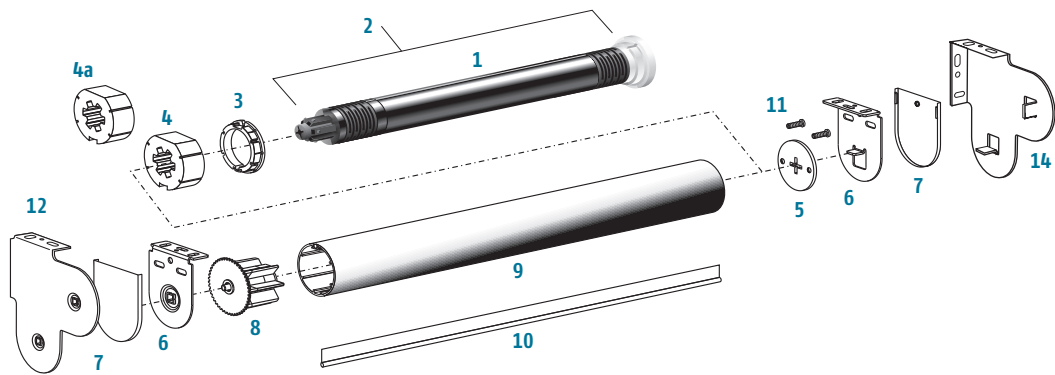
APPLICATION EXAMPLE



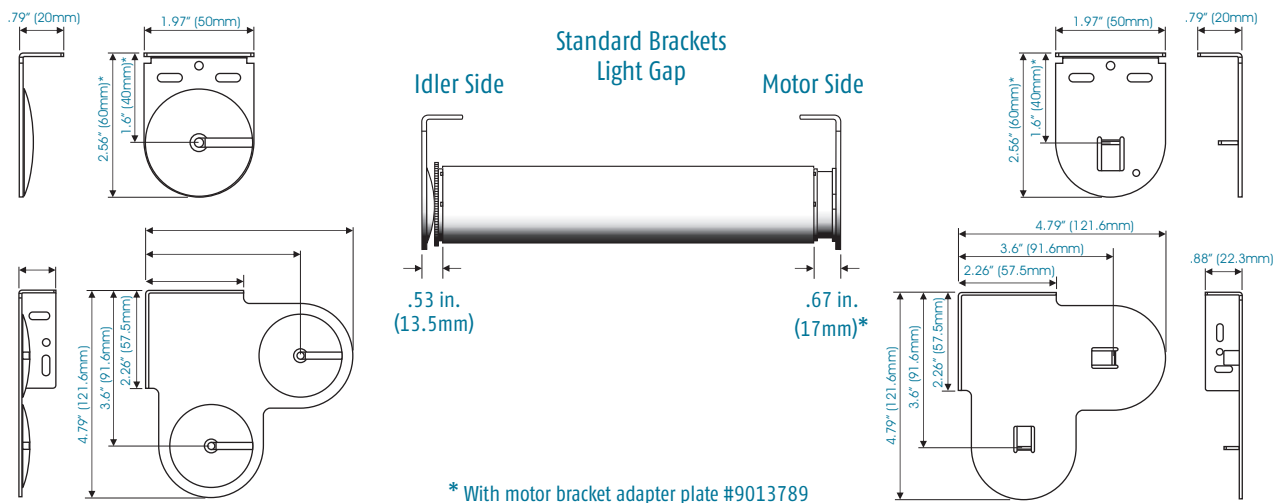
Up to 10 Motors

NOTE: A maximum of 8 motors can be wired to 1 switch or Dry Contact input.

STANDARD BRACKET COMPONENTS



DIMENSIONS AND LIGHT GAP SPECIFICATIONS



PRODUCT CHART

IMAGE	DESCRIPTION	CATALOG NUMBER
1	SONESSE® 30 MOTOR (RTS #1001524, RS485 #1000658, DCT #1000668)	
2	SONESSE® 30 TO LS40 ADAPTER KIT	9013776
3	CROWN ADAPTER 44MM TUBE (ACMEDA TYPE)	9013791
4	DRIVE WHEEL 44MM (ACMEDA TYPE)	9013790
4a	SILENT DRIVE WHEEL 44MM (ACMEDA TYPE)	9015259
5	MOTOR BRACKET ADAPTER PLATE (ACMEDA TYPE)	9013789
6	MOTOR & IDLER BRACKET KIT 4OP (ACMEDA TYPE)	9013778
7	PLASTIC BRACKET COVER 4OP KIT (ACMEDA TYPE)	9013780
8	IDLER END PLUG 44MM TUBE (ACMEDA TYPE)	9013774
9	44M ALUMINUM TUBE (16 FT. MAX LENGTH)	1780688
10	TUBE SPLINE 44MM TUBE (ACMEDA TYPE)	1780687
11	M3.5 x 9MM SCREWS	9014066
12	MOTOR BRACKET COMBO SET 122mmX122mm	9013782

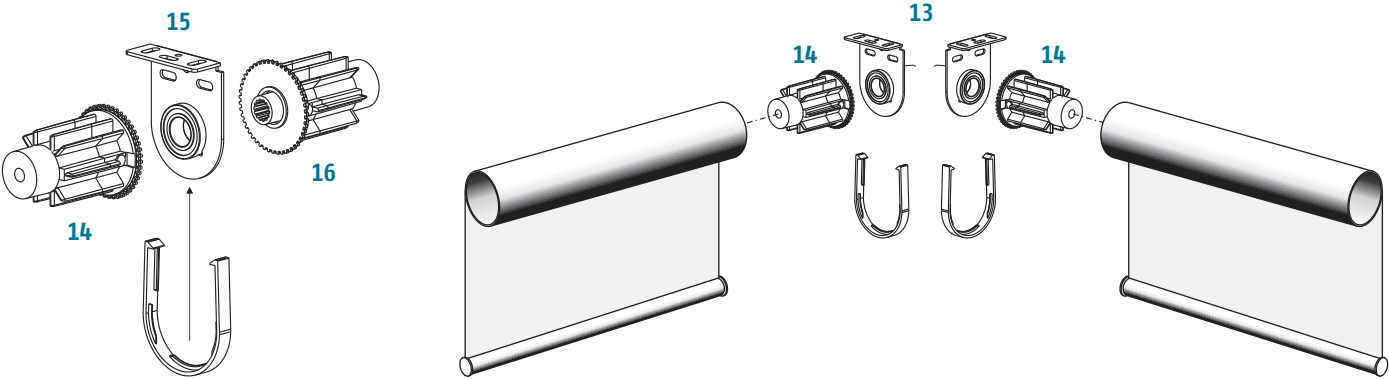
Solar/Roller Shades



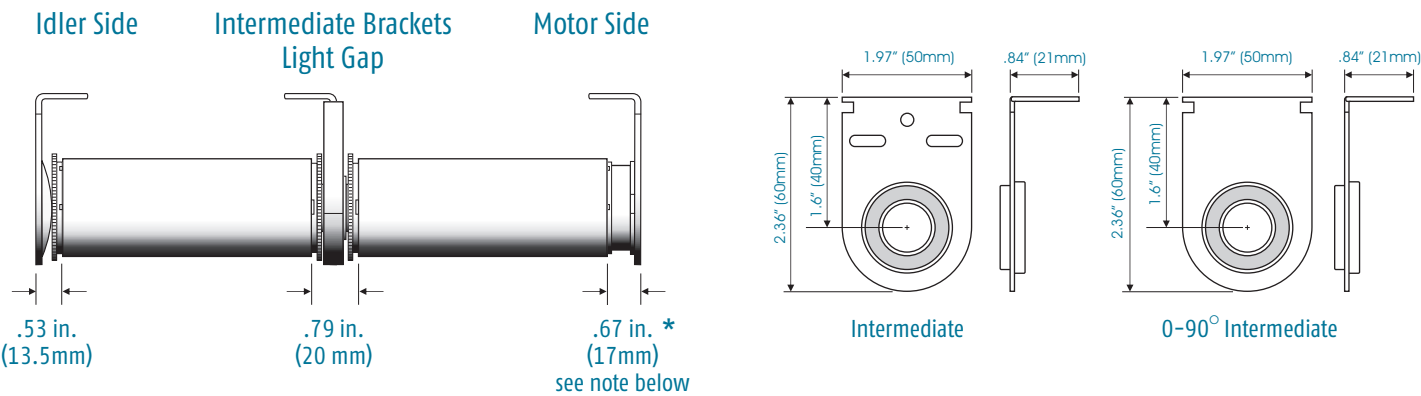
Roman/Woven Shades



INTERMEDIATE BRACKET COMPONENTS



DIMENSIONS AND LIGHT GAP SPECIFICATIONS



* With motor bracket adapter plate #9013789

PRODUCT CHART		
IMAGE	DESCRIPTION	CATALOG NUMBER
13	INTERMEDIATE BRACKET & COVER KIT 40P, 0-90 DEGREES (ACMEDA TYPE)	9013787
14	INTERMEDIATE MALE IDLER END PLUG (ACMEDA TYPE)	9013786
15	INTERMEDIATE BRACKET & COVER KIT 40P (ACMEDA TYPE)	9013783
16	INTERMEDIATE FEMALE IDLER END PLUG (ACMEDA TYPE)	9013785

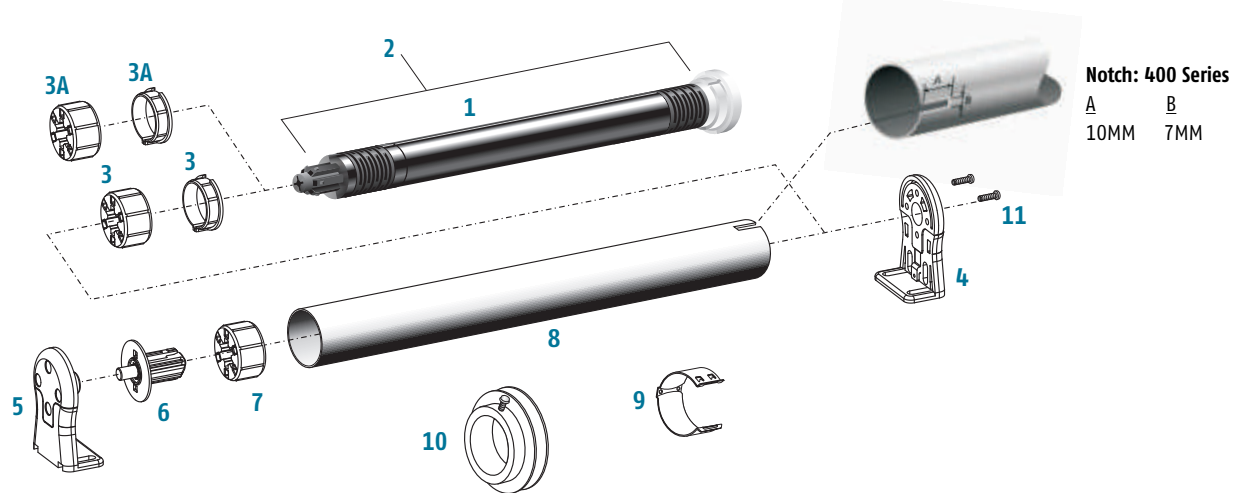
Solar/Roller Shades



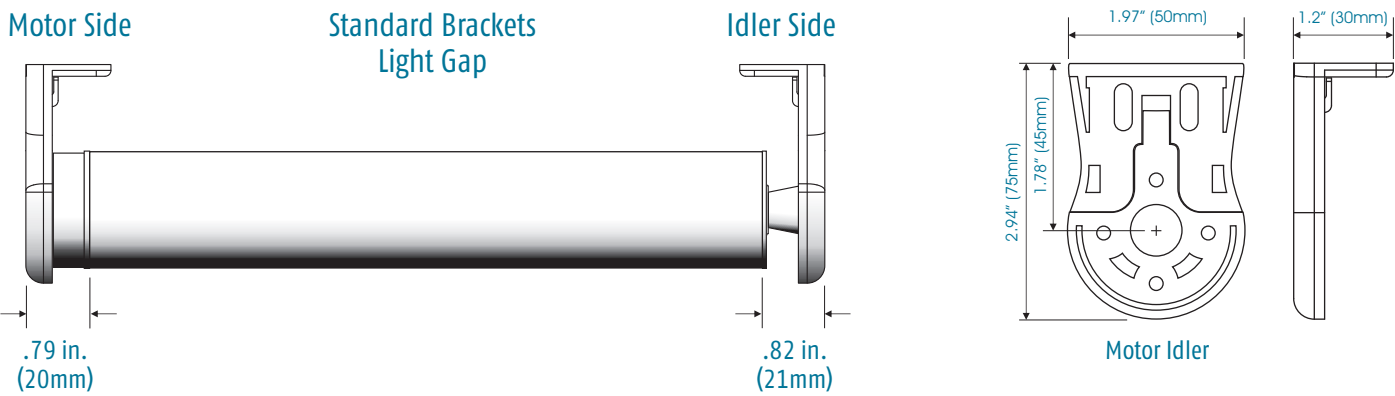
Roman/Woven Shades



STANDARD BRACKET COMPONENTS



DIMENSIONS AND LIGHT GAP SPECIFICATIONS



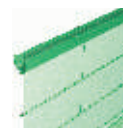
PRODUCT CHART

IMAGE	DESCRIPTION	CATALOG NUMBER
1	SONESSE® 30 MOTOR (RTS #1001524, RS485 #1000658, DCT #1000668)	
2	SONESSE® 30 TO LS40 ADAPTER KIT	9013776
3	CROWN AND DRIVE (SOMFY 40MMX 1.5MM ROUND TUBE)	9012224
3A	CROWN AND RUBBERIZED DRIVE (SOMFY 40MMX 1.5MM ROUND TUBE)	9016654
4	MOTOR BRACKET (DECORATOR TYPE)	9500683
5	IDLER END BRACKET (DECORATOR TYPE)	9500685
6	IDLER END PLUG (DECORATOR TYPE)	9500688
7	40MM ROUND DRIVE (FOR USE WITH IDLER END PLUG)	9147544
8	SOMFY 40MM ROUND TUBE (20FT. MAX LENGTH)	1781153
9	CORD CLIPS FOR ROMAN SHADE APPLICATIONS	9012200
10	CORD TAKE-UP REEL (40MM TUBE)	1781152
11	M3.5 x 9MM SCREWS (Must be ordered separately when used with Sonesse® 30 motor range.)	9014066

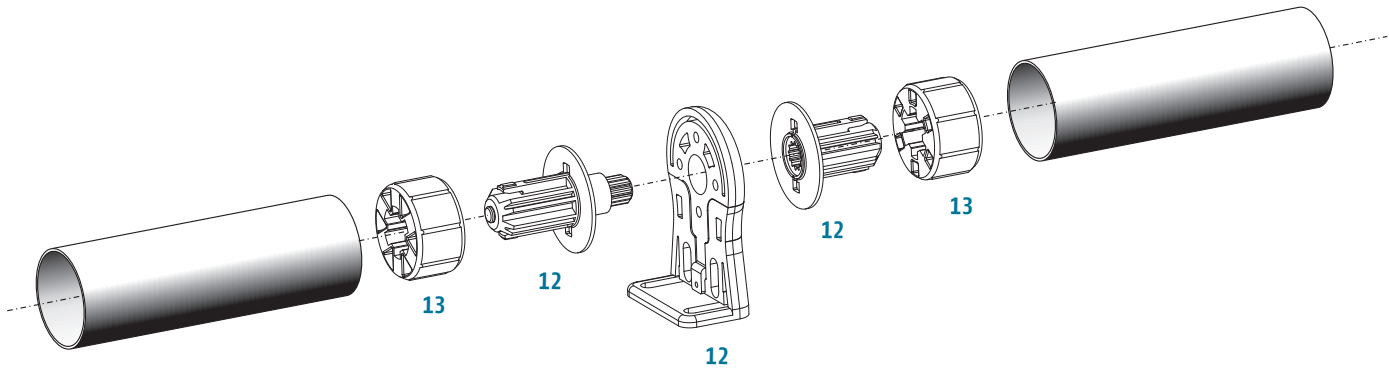
Solar/Roller Shades



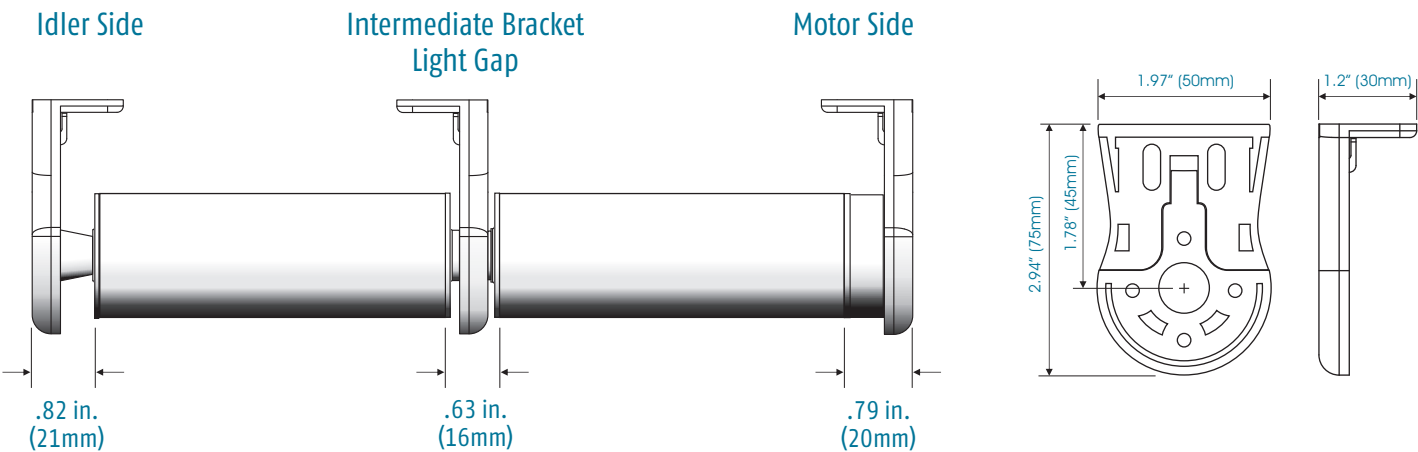
Roman/Woven Shades



INTERMEDIATE BRACKET COMPONENTS



DIMENSIONS AND LIGHT GAP SPECIFICATIONS



PRODUCT CHART		
IMAGE	DESCRIPTION	CATALOG NUMBER
12	INTERMEDIATE BRACKET KIT (DECORATOR TYPE)	9500687
13	40MM ROUND DRIVE (FOR USE WITH INTERMEDIATE BRACKET)	9147544

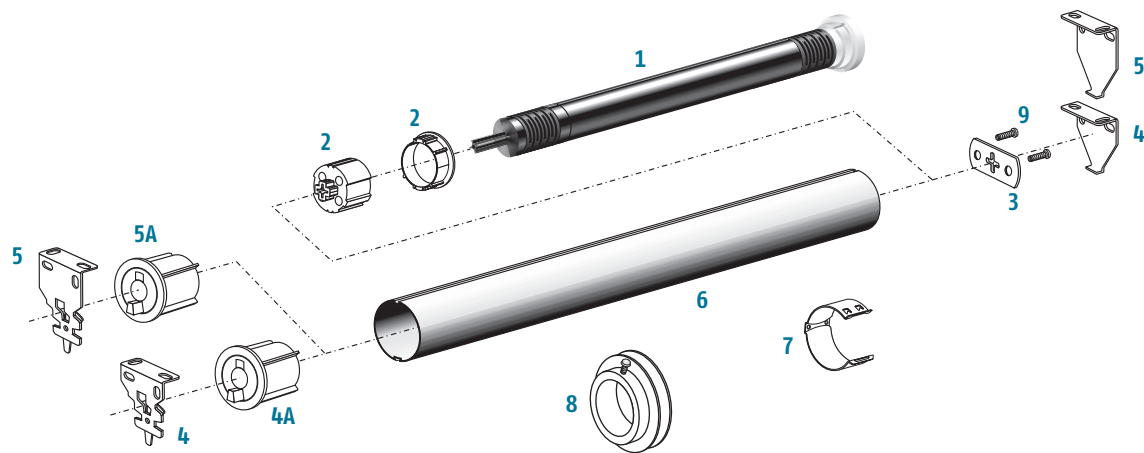
Solar/Roller Shades



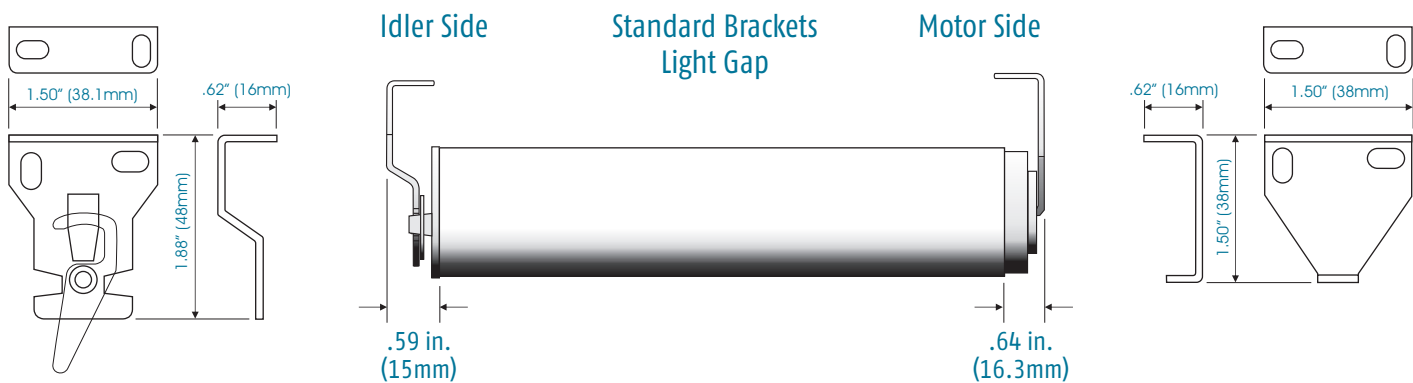
Roman/Woven Shades



STANDARD BRACKET COMPONENTS



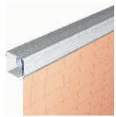
DIMENSIONS AND LIGHT GAP SPECIFICATIONS



PRODUCT CHART

IMAGE	DESCRIPTION	CATALOG NUMBER
1	SONESSE® 30 MOTOR (RTS #1001524, RS485 #1000658, DCT #1000668)	
2	CROWN AND DRIVE FOR ROLLEASE® 1.5" TUBE	9013775
3	MOTOR ADAPTER PLATE FOR ROLLEASE® R8 BRACKET WITH SCREWS	9014073
4, 4A & 3	ROLLEASE® 1.5" BRACKET KIT R8 SERIES FOR SOMFY 40MM ROUND TUBE	9012311
5, 5A & 3	ROLLEASE® 2" BRACKET KIT R8 SERIES FOR SOMFY 2" ROUND TUBE	9012313
6	ROLLEASE® 1.5" TUBE	9017913
7	CORD CLIPS FOR ROMAN SHADE APPLICATIONS	9012200
8	TAKE-UP REEL - ROLLEASE® 1.5" TUBE	1780786
9	M3.5 x 9MM SCREWS	9014066

Solar/Roller Shades



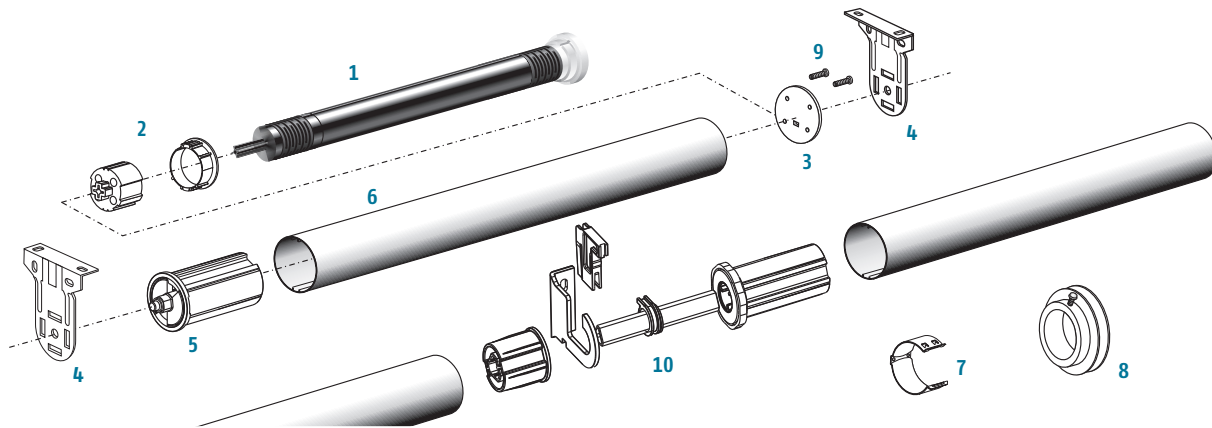
Roman/Woven Shades



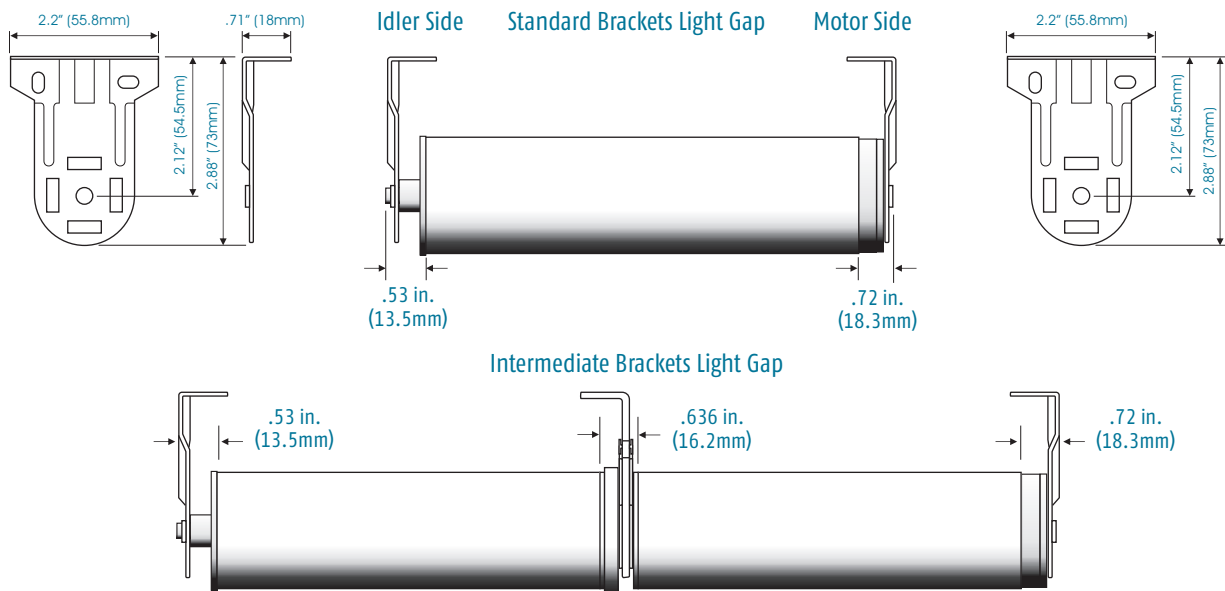
Sheer Horizontal Shades



STANDARD BRACKET COMPONENTS



DIMENSIONS AND LIGHT GAP SPECIFICATIONS



PRODUCT CHART

IMAGE	DESCRIPTION	CATALOG NUMBER
1	SONESSE® 30 MOTOR (RTS #1001524, RS485 #1000658, DCT #1000668)	
2	CROWN AND DRIVE FOR ROLLEASE® 1.5" TUBE	9013775
3	MOTOR BRACKET ADAPTER PLATE	9016378
4	ROLLEASE® SKYLINE SERIES BRACKETS 1.5"	9017910
5	ROLLEASE® SKYLINE SERIES IDLER END PLUG	9017912
6	ROLLEASE® 1.5" TUBE	9017913
7	CORD CLIPS FOR ROMAN SHADE APPLICATIONS	9012200
8	TAKE-UP REEL - ROLLEASE® 1.5" TUBE	1780786
9	M3.5 x 9MM SCREWS	9014066
10	ROLLEASE® SKYLINE SERIES INTERMEDIATE LINK SYSTEM	9016367

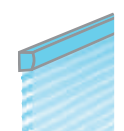
Solar/Roller Shades



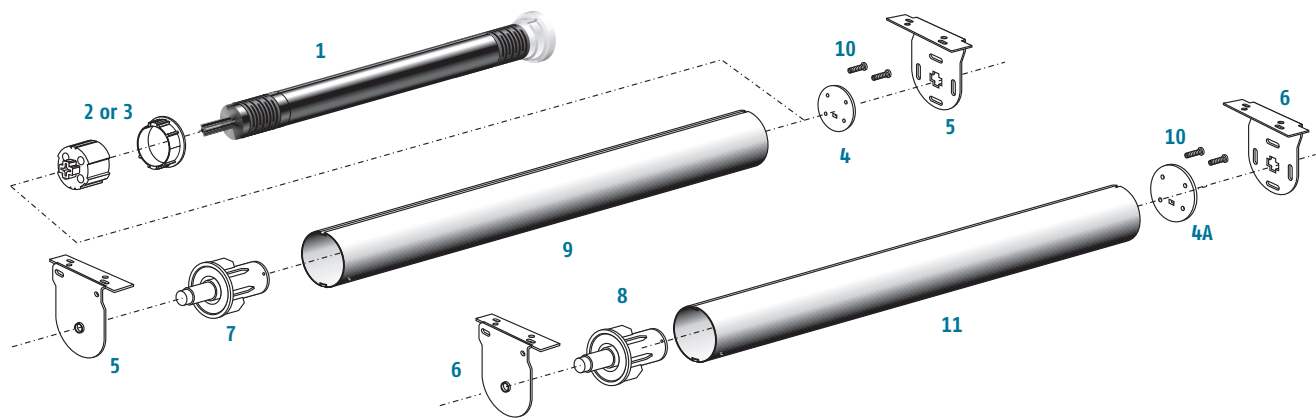
Roman/Woven Shades



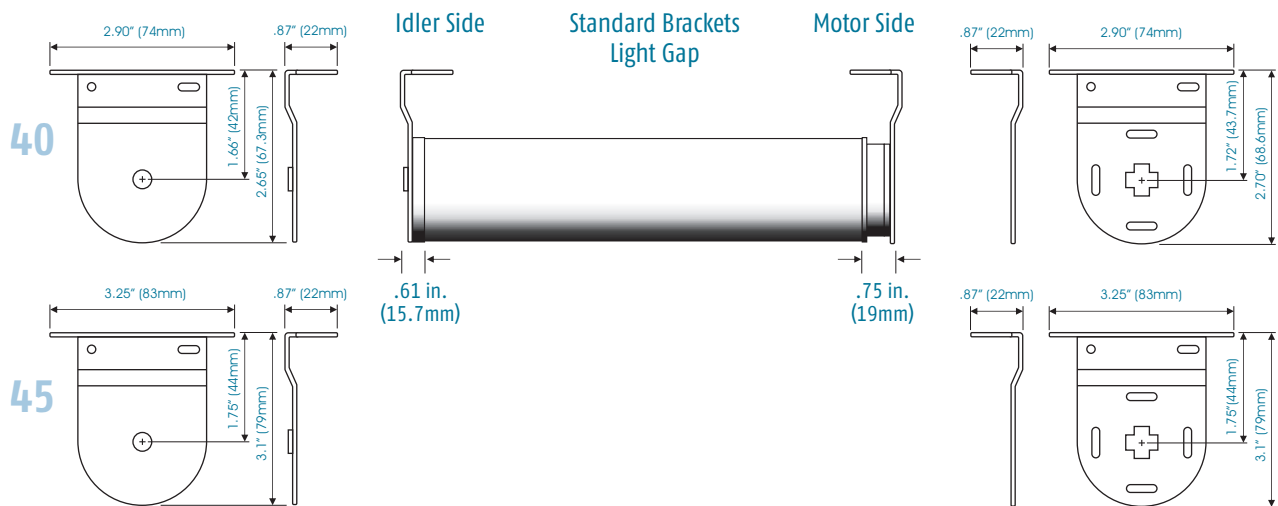
Sheer Horizontal Shades



STANDARD BRACKET COMPONENTS



DIMENSIONS AND LIGHT GAP SPECIFICATIONS



PRODUCT CHART

IMAGE	DESCRIPTION	CATALOG NUMBER
1	SONESSE® 30 MOTOR (RTS #1001524, RS485 #1000658, DCT #1000668)	SEE PAGES 2 & 3
2	CROWN AND DRIVE (LOUVOLITE 40MM TUBE) WITH SCREWS	9013775
2, 4, 10	CROWN AND DRIVE, MOTOR BRACKET ADAPTER PLATE WITH SCREWS (LOUVOLITE SYSTEM 40)	9014045
3, 4A,, 10	CROWN AND DRIVE, MOTOR BRACKET ADAPTER PLATE WITH SCREWS (LOUVOLITE SYSTEM 45)	9014333
4	MOTOR BRACKET ADAPTER PLATE WITH SCREWS (LOUVOLITE SYSTEM 40)	9014072
4a	MOTOR BRACKET ADAPTER PLATE WITH SCREWS (LOUVOLITE SYSTEM 45)	9016013
5	MOTOR & IDLER BRACKET KIT (LOUVOLITE SYSTEM 40)	9013715
6	*MOTOR & IDLER BRACKET KIT (LOUVOLITE SYSTEM 45)	9015554
7	COLLAPSIBLE END PLUG (LOUVOLITE SYSTEM 40)	9013716
8	COLLAPSIBLE END PLUG (LOUVOLITE SYSTEM 45)	9015555
9	LOUVOLITE 40MM TUBE	CONTACT LOUVOLITE
10	SCREWS M3.5X9MM	9014066
11	LOUVOLITE 45MM TUBE	CONTACT LOUVOLITE

* KIT TO BE USED WITH MOTOR BRACKET ADAPTER PLATE (LOUVOLITE SYSTEM 40), CATALOG #9014072

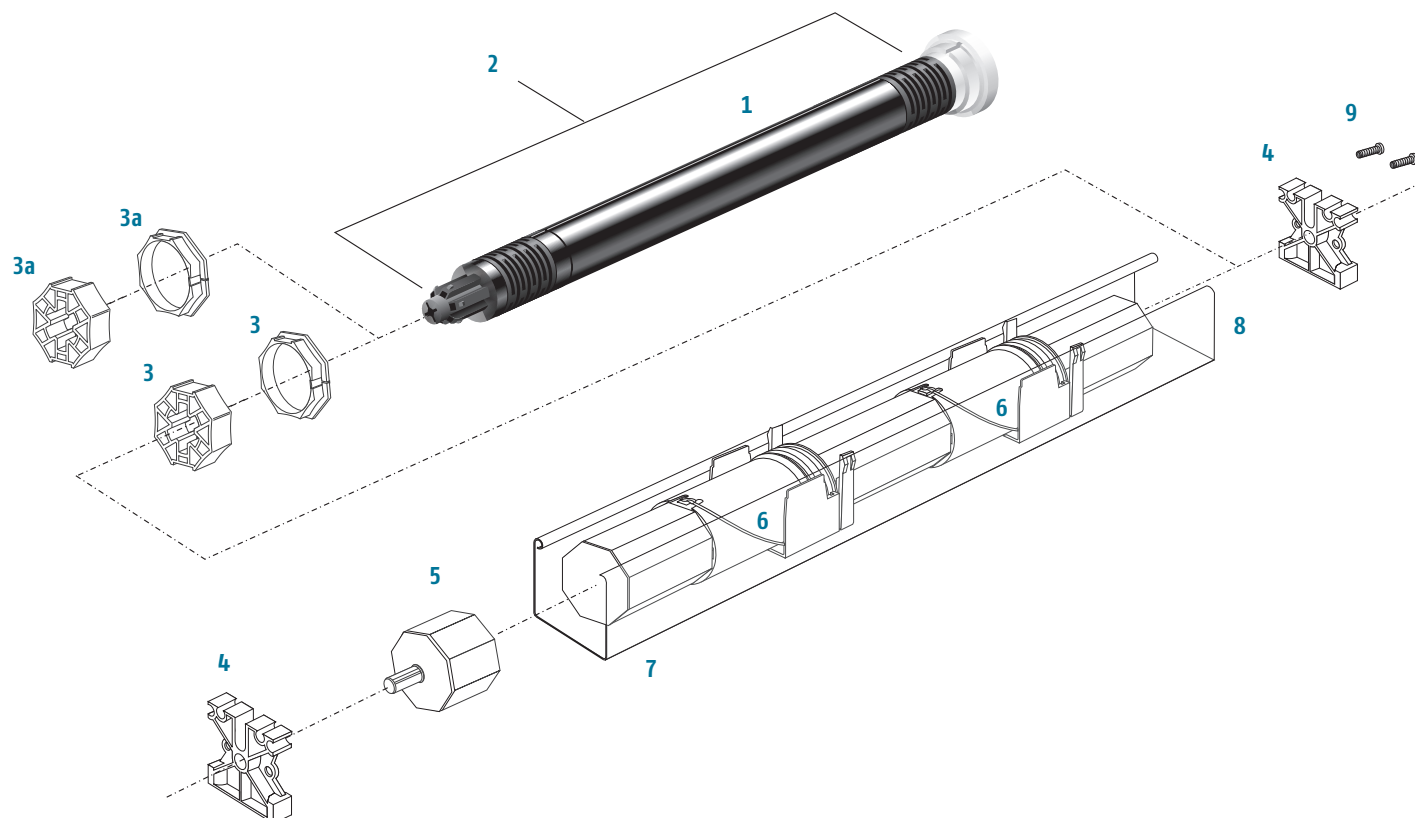
Solar/Roller Shades



Roman/Woven Shades



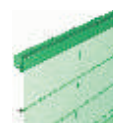
CORD TAKE-UP SYSTEM (CTS)



PRODUCT CHART

IMAGE	DESCRIPTION	CATALOG NUMBER
1	SONESSE® 30 MOTOR (RTS #1001524, RS485 #1000658, DCT #1000668)	
2	SONESSE® 30 TO LS40 ADAPTER WITH SCREWS	9013776
3	CROWN AND DRIVE KIT 40MM OCTAGONAL TUBE (LOUVOLITE SYSTEM 40)	9012225
3a	RUBBERIZED CROWN AND DRIVE KIT 40MM OCTAGONAL TUBE	9016655
4	MOTOR / IDLER BRACKET (FOR 57 X 51MM HEADRAIL) (LOUVOLITE SYSTEM 45)	9500736
5	IDLER END PLUG FOR 40MM OCTAGONAL TUBE	9012274
6	CTS 40 (FOR 57 X 41MM HEADRAIL)	1781118
7	SOMFY 40MM OCTAGONAL TUBE (20FT. MAX LENGTH)	1781154
8	57X51MM (2" X 2 1/4") GUTTER RAIL OR SIMILAR	CONTACT MANUFACTURER
9	M3.5 x 9MM SCREWS	9014066

Roman/Woven Shades



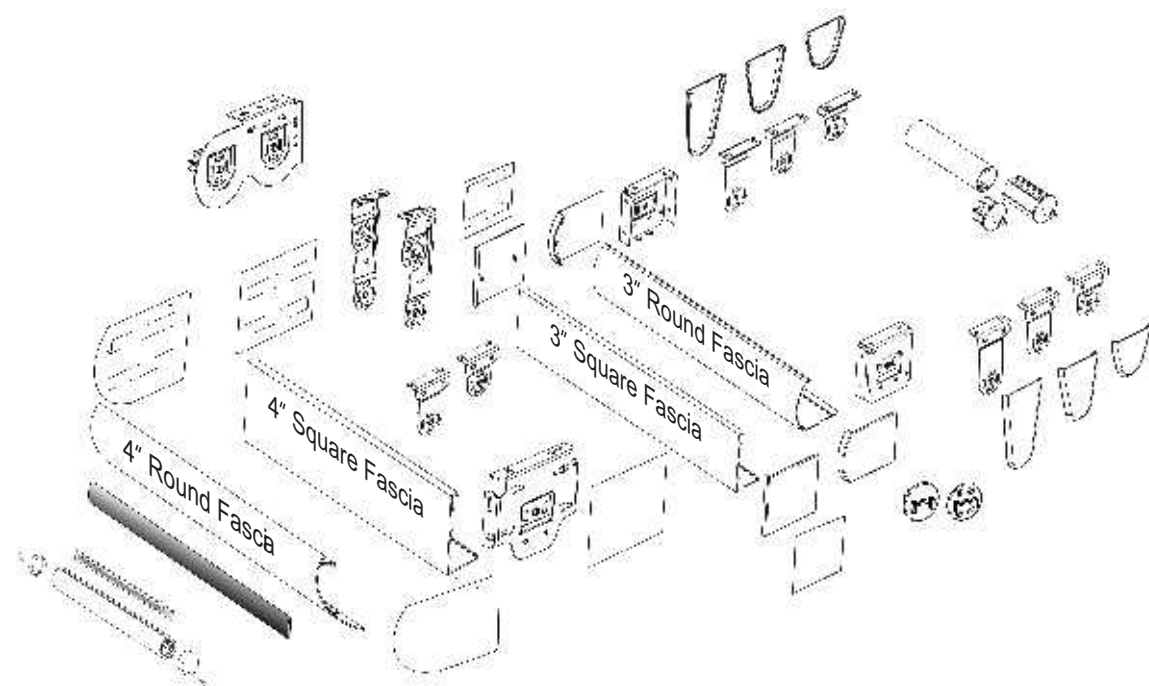
Cellular/Pleated Blinds



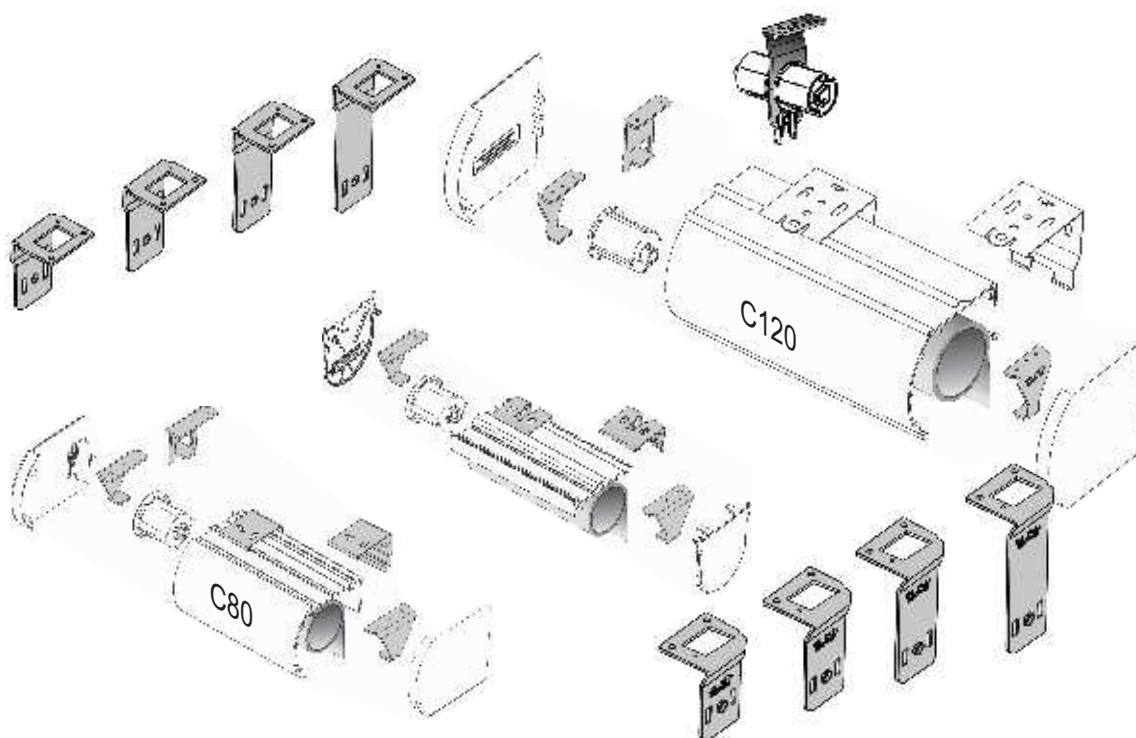
Horizontal Blinds



SKYLINE™ BRACKET AND FASCIA ACCESSORIES*



C80/C120 CASSETTE ACCESSORIES*



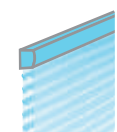
Solar/Roller Shades



Roman/Woven Shades

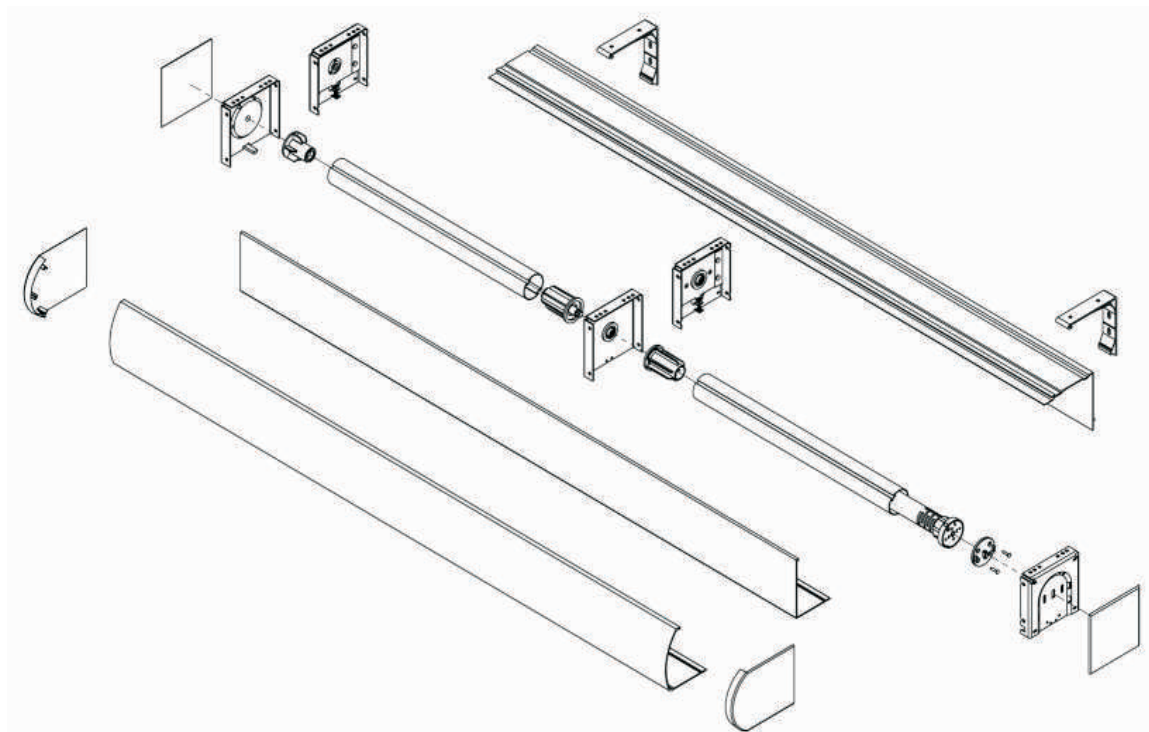


Sheer Horizontal Shades

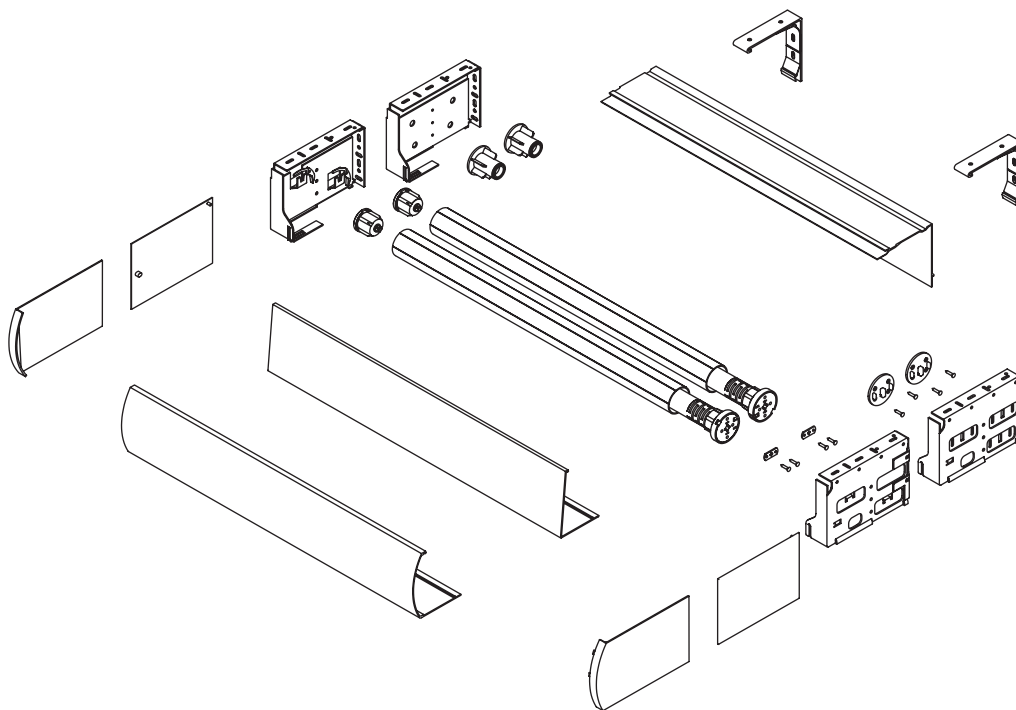


* Available through RollEase®

INTERMEDIATE BRACKET SOLUTIONS**



DUO SHADE FASCIA COMPONENTS**



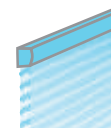
Solar/Roller Shades



Roman/Woven Shades



Sheer Horizontal Shades



** Available through ZMC Window Coverings, Inc.

Sonesse® 30 Mechanical Accessories

CROWNS AND DRIVES

TUBE PROFILE	SET
Compatible with all 400 series crowns and drives.	 <p>Sonesse® 30 to 400 Series Adapter Kit (adapts Sonesse® 30 to all 400 Series crowns and drives) Part # 9013776</p>
 <p>ø 1.5 in. / 38mm RollEase®</p>	 <p>Crown and Drive Set for RollEase® 1.5"/38mm Tube Part # 9013775</p>
 <p>ø 1.5 in. / 40mm Round</p>	 <p>400 Series Crown and Drive Set* (for Somfy 40mm x 1.5" round tube) Part # 9012224</p>  <p>400 Series Crown and Rubberized Drive Set* (for Somfy 40mm x 1.5" round tube) Part # 9016654</p>
 <p>ø 1.5 in. / 40mm Octagonal</p>	 <p>400 Series Crown and Drive Set* (for 40mm octagonal tube) Part # 9012225</p>  <p>400 Series Crown and Rubberized Drive Set* (for 40mm octagonal tube) Part # 9016655</p>

TUBE PROFILE	SET
 <p>ø 1.5 in. / 40mm Louvolite</p>	 <p>Crown, Drive, Motor Mount Plate and 3.5 x 9mm Screws (for Louvolite® System 40) Part # 9014045</p>
 <p>ø 44mm Acmeda</p>	 <p>Crown Adapter for Acmeda 44mm Tube* Part # 9013791</p> <p>Soft Drive Wheel (ST30/LT30 type for Acmeda 44mm Tube) Part # 9015259</p>
 <p>ø 44mm Acmeda</p>	 <p>Crown Adapter for Acmeda 44mm Tube* Part # 9013791</p> <p>Drive Wheel (LS40 type for Acmeda 44mm Tube)* Part # 9013790</p>
 <p>ø 45mm Louvolite</p>	 <p>Crown, Drive, Motor Mount Plate and 3.5 x 9mm Screws (for Louvolite® System 45) Part # 9014333</p>
 <p>ø 50mm Hunter Douglas</p>	 <p>Crown and Drive for HD 4" Silhouette® (Quartet) Part # 9016953</p>

* NOTE: Must be used with Sonesse 30® to 400 Series Adapter Kit # 9013776

www.somfypro.com

SOMFY SYSTEMS, INC.
NORTH AMERICA HEADQUARTERS
121 Herrod Blvd.
Dayton, NJ 08810
Phone: (800) 227-6639
Phone: (609) 395-1300
Fax: (609) 395-1776

SOMFY FLORIDA
6100 Broken Sound Pkwy
Northwest, Suite 14
Boca Raton, FL 33487
Phone: (877) 227-6639
Phone: (561) 995-0335
Fax: (561) 995-7502

SOMFY CALIFORNIA
15291 Barranca Pkwy
Irvine, CA 92618
Phone: (877) 727-6639
Fax: (949) 727-3775

SOMFY ULC
SOMFY CANADA DIVISION
5178 Everest Drive
Mississauga, Ontario L4W2R4
Phone: CN: (800) 667-6639
CN: (905) 564-6446
Fax: (905) 238-1491

All specifications are subject to change.