

POWERS' RATINGS

Volume 2 Issue 10

October 30-November 4, 2024

© 2024 BP Sports, LLC

Powers' Ratings Computer Plays in CFB 500-432-14 (53.6%) All-Time 2016-2024

Week 9 News and Notes!

For those of you that are new, in this section we'll recap what happened last week specifically, the misleading finals, the key injuries, the bad beats and the line moves. We'll include most of these recaps here, therefore you don't have to waste time reading about them in my game-by-game write-ups for the upcoming week. Without further adieu, here's a run down of what happened last week in the world of CFB.

Week 9 Trends

Straight Up	46-11
ATS	28-26-3
Straight Up	40-16
ATS	35-18-3
Over-Under	27-26-4
Straight Up	453-125
ATS	376-286-13
Straight Up	347-164
ATS	250-247-11
Over-Under	280-282-13

Favorites-Dogs

Home-Away

Totals (O/U)

Season To-Date

Favorites-Dogs

Home-Away

Totals (O/U)

Season To-Date

Favorites-Dogs

Home-Away

Totals (O/U)

Season To-Date

Favorites-Dogs

Home-Away

Totals (O/U)

Largest Favorites to Cover:

Massachusetts (-23) vs Wagner, 35-7
Oregon (-22) vs Illinois, 38-9
Jacksonville State (-20.5) vs Middle Tennessee, 42-20

Biggest Money Line Upsets:

Kennesaw State +1600 won 27-24 vs Liberty (+27)
Ball State +395 won 25-23 vs Northern Illinois (+13.5)
Tulsa +280 won 46-45 vs UTSA (+9.5)

6-0-1 ATS teams with margin per game:

Marshall 5.9

7-1 ATS teams with margin per game:

Indiana 15.6

BYU 13.9

6-1 ATS teams with margin per game:

Army 10.9

Pittsburgh 10.6

WKU 6.0

6-1-1 ATS teams with margin per game:

Minnesota 7.4

0-7 ATS teams with margin per game:

Air Force -11.6

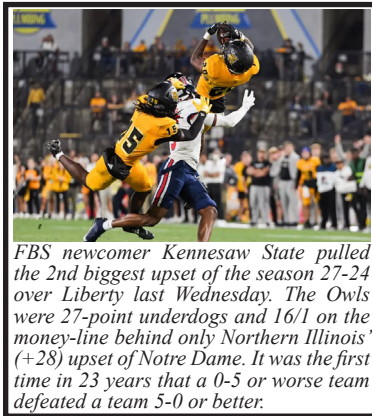
1-7 ATS teams with margin per game:

Arizona -12.1

1-6-1 ATS teams with margin per game:

NC State -8.6

North Carolina -2.4



FBS newcomer Kennesaw State pulled the 2nd biggest upset of the season 27-24 over Liberty last Wednesday. The Owls were 27-point underdogs and 16/1 on the money-line behind only Northern Illinois (+28) upset of Notre Dame. It was the first time in 23 years that a 0-5 or worse team defeated a team 5-0 or better.

7-0 teams to the OVER with margin:

Navy 16.0

7-1 teams to the OVER with margin:

North Texas 12.3

Ball State 11.1

Iowa 9.3

6-1-1 teams to the OVER with margin:

Miami, FL 11.1

Maryland 7.8

5-1 teams to the OVER with margin:

Jacksonville State 14.9

7-1 teams to the OVER with margin:

Houston 10.4

Utah 9.3

Ole Miss 9.0

Florida State 8.2

Georgia Tech 7.1

Misleading Finals

Pittsburgh (-5) beat Syracuse 41-13. However, Syracuse had a 327-217 yard edge but were -5 in TO's. Syracuse QB Kyle McCord threw 5 interceptions including three "Pick 6's"!

Boston College (+7) led Louisville 20-0. Louisville rallied for a 31-27 win.

Rutgers (+14) was stopped on downs at the USC 30-yard, 13-yard and 32-yard lines in a 42-20 loss last Friday.

Virginia Tech (-11) beat Georgia Tech 21-6. However, Georgia Tech had a 356-233 yard edge but were -2 in TO's. The Yellow Jackets were stopped on downs at the Virginia Tech 17-yard and 24-yard lines.

UTSA (-9.5) was upset by Tulsa 46-45. UTSA had a 546-433 yard edge. The Road-runners led 35-7 at halftime and still led 42-17 late in the third quarter. It was arguably the biggest collapse of the season.

New Mexico (+3.5) lost to Colorado State 17-6. However, New Mexico had a 453-334 yard edge but were -4 in TO's.

SMU (-11) beat Duke 28-27 in overtime. SMU won despite being -6 in TO's in the game. Since 2000, teams were 1-124 straight up with a -6 TO margin.

Notre Dame (-14) crushed Navy 51-14. Speaking of 6 turnovers, ND was +6 TO's in the win as Navy hadn't turned the ball over since week 1 prior.

Texas A&M (-2) beat LSU 38-23. However, LSU had a 429-376 yard edge but the Tigers were -2 in TO's and missed 3 FG's.

Michigan (-3) beat rival Michigan State 24-17. However, Michigan State had a 352-265 yard edge. The Spartans were -1 in TO's, missed a 25-yard FG, were stopped on downs at the Michigan 16 and a MSU fumble set up a 2-play 15-yard FG "drive" for UM right before the half.

Utah State (-2.5) beat Wyoming 27-25. However, Wyoming had a 470-378 yard edge but the Cowboys were -2 in TO's.

Bad Beats

The total in the Northern Illinois/Ball State game was 47.5. NIU kicked a 47-yard FG with :15 left to take a 23-22 lead. Ball State hit two passes to the NIU 35-yard line then kicked a 52-yard FG on the final play to win 25-23 and put the game over a 0.5-point.

Injuries/Personnel News

-Arizona State QB Sam Leavitt is "60/40 to play" according to head coach Kenny Dillingham. If he can't go, Jeff Sims would get the start like he did vs Cincinnati.

-Arkansas RB Ja'Quinden Jackson is doubtful for this week's game vs Ole Miss.

-FAU QB Cam Fancher is still not a full-go at practice according to head coach Tom Herman. If he can't go, expect Kasen Weisman to be the starter.

-There's optimism that Indiana QB Kurtis Rourke will play this week.

-Iowa QB Cade McNamara is out for this week's game vs Wisconsin. Brendan Sullivan will get the start.

-Michigan QB Jack Tuttle retires from football. Davis Warren is the likely QB1 for the rest of the season after a solid game last week vs Michigan State.

-Middle Tennessee TE Holden Willis is questionable for this week's game.

-Penn State QB Drew Allar is a game-time decision this week after hurting his knee in last week's game vs Wisconsin.

-Pitt QB Eli Holstein is questionable vs SMU this week.

-Rice fired head coach Mike Bloomgren after a 24-52 record.

-SMU QB Kevin Jennings is questionable vs Pitt this week.

-Texas State QB Jordan McCloud was injured in the 23-17 loss to UL-Lafayette on Tuesday night.

-Texas Tech QB Behren Morton will start this week vs Iowa State.

-UAB QB Jacob Zeno will miss his 4th straight game this week.

-USF QB Byrum Brown hasn't been taking first-team reps this week. Expect Bryan Archie to start on Friday night vs FAU.

-Utah WR Money Parks is out for the season with a shoulder injury.

-UTEP QB Skyler Locklear (concussion) is a game-time decision for Saturday's game. If he can't go, look for JP Pickles to be QB1 for the Miners.

-Vanderbilt Q Diego Pavia is "banged up" but will play vs Auburn.

-Virginia Tech RB Bhayshul Tuten is probable this week according to head coach Brent Pry. The injury was reported as more serious a few days prior.

-Wyoming QB Kaden Anderson will get the start this week.

Brad Powers' Radio/TV/Podcast Weekly Schedule This Fall

Mon 12:15pm ET. Early best bets with Joe Osborne @Covers on Twitter/YouTube

Mon 4:00pm ET. General sports betting talk with Greg Pogue @NashSportsRadio

Mon 5:00pm ET. Weekend recap with Joey Knish @HitTheBooks on YouTube

Tue 10:20am ET. JB and the General show @NashSportsRadio

Wed 1:00pm ET Bet The Board Podcast. A deep dive podcast into the biggest CFB games of the week with Payne Insider and Todd Fuhrman.

Wed 7:30pm ET. @VSiNLive Primetime with Tim Murray

Thur 12:00pm ET Weekly CFB Topics with Rico Bosco on Barstool @PicksCentral

Thur 1:40pm ET Overtime with Bert Remien @ESPNSiouxFalls

Thur 5:00pm ET. Previewing Alabama with Ryan Fowler on @tide1009

Thur 5:45pm ET @VSiNLive Follow the Money w/Mitch Moss and Pauly Howard.

Thur 7:45pm ET. Weekend preview with Steve Coffold on @espnlasvegas

Thur 9:25pm ET. Run down of every game with Ken Thomson on @kdwnLasVegas

Fri 9:00am ET. Weekend preview on Bill King show @NashSportsRadio

Fri 12:15pm ET. Big game bets with Joe Osborne @Covers on Twitter/YouTube.

Fri 5:00pm ET. Weekend preview with Joey Knish @HitTheBooks on YouTube

Sat: Previewing WVU with Brad Howe/Hoppy Kercheval @WVMetroNews

@ indicates the Twitter handle.

Recapping Week 9 Best Bets

Our power ratings plays went 3-0 last week. Those are the plays that are 3 points or more off the Vegas lines. They are 53.6% all-time with a 900-game sample size the last 9 years. VIP customers are off to a 43-31-2 start to the season!!!

CFB and NFL Schedules with Vegas and Brad Powers Lines Week 10 Oct 30-Nov 4

Wednesday, Oct 30th					Saturday, Nov 2nd				
	Time/TV	Open	Current	BP		Time/TV	Open	Current	BP
307 Jacksonville State	7:00	63.5	64	-1	367 Navy	4:00	-13	-11	-10
308 Liberty	CBSSN	-2	-2.5	61	368 Rice	ESPN2	52.5	50.5	54
309 Kennesaw State	7:30	53.5	49.5	50	369 Tulsa	2:30	56.5	58	59
310 Western Kentucky	ESPN2	-24	-24	-24	370 UAB	ESPN+	-5	-3	-3
Thursday, Oct 31st					Sunday, Nov 3rd				
	Time/TV	Open	Current	BP		Time/TV	Open	Current	BP
311 Houston	8:15	42.5	42	-1	451 New England	1:00	38.5	38	38
312 N.Y. Jets	Prime	-1.5	-2	41	452 Tennessee	FOX	-3.5	-3	-4
319 Tulane	7:30	-15	-14.5	-16	453 L.A. Chargers	1:00	-4.5	-2	-2
400 Charlotte	ESPN	55.5	55.5	58	454 Cleveland	CBS	39.5	43	44
Friday, Nov 1st					455 New Orleans	1:00	-3.5	-7.5	-7
	Time/TV	Open	Current	BP	456 Carolina	CBS	46	43.5	41
315 Georgia State	7:00	47.5	48.5	50	457 Miami	1:00	48	49.5	49
316 Connecticut	CBSSN	-7	-7.5	-6	458 Buffalo	CBS	-5.5	-6	-7
317 South Florida	7:30	-4	-2.5	-3	459 Dallas	1:00	48.5	52	52
318 Florida Atlantic	ESPN2	54.5	49	53	460 Atlanta	FOX	-2.5	-2.5	-4
319 San Diego State	8:00	55.5	57.5	59	461 Denver	1:00	43.5	45.5	45
324 Boise State	FS1	-24	-23.5	-23	462 Baltimore	CBS	-10	-9.5	-9
Saturday, Nov 2nd					463 Las Vegas	1:00	45	46.5	47
	Time/TV	Open	Current	BP	464 Cincinnati	FOX	-9.5	-7.5	-7
321 Virginia Tech	12:00	-4	-4	-3	465 Indianapolis	8:20	46	46.5	46
322 Syracuse	CW	53.5	53.5	53	466 Minnesota	NBC	-6.5	-5.5	-4
323 Louisville	7:30	56.5	63	61	467 Washington	1:00	-3	-3.5	-3
324 Clemson	ESPN	-12	-10.5	-11	468 N.Y. Giants	FOX	44	43.5	43
325 Old Dominion	2:30	61.5	-2.5	59	469 Chicago	4:05	-1.5	44.5	45
326 Appalachian State	ESPN+	-3	60.5	-1	470 Arizona	CBS	47	PK	-1
327 Arizona	3:30	54.5	56	56	471 L.A. Rams	4:25	48.5	-2	47
328 Central Florida	FS1	-5	-6	-6	472 Seattle	FOX	-3	48.5	-1
329 Air Force	12:00	42.5	42	41	473 Detroit	4:25	50.5	-3.5	-3
330 Army	CBS	-23	-22	-21	474 Green Bay	FOX	PK	48.5	47
331 Vanderbilt	12:45	45.5	48	48	475 Jacksonville	4:05	47.5	46	46
332 Auburn	SECN	-6	-6.5	-6	476 Philadelphia	CBS	-6.5	-7.5	-8
333 Ole Miss	12:00	-4	-7	-8	Monday, Nov 4th				
334 Arkansas	ESPN	56.5	53.5	54		Time/TV	Open	Current	BP
335 UL-Monroe	3:30	47.5	47	49	477 Tampa Bay	8:15	45.5	45.5	46
336 Marshall	ESPN+	-9	-10	-9	478 Kansas City	ABC	-10	-9	-10
337 Duke	12:00	56.5	54.5	56					
338 Miami, FL	ABC	-20	-21	-20					
339 Buffalo	12:00	46.5	-1	-1					
340 Akron	CBSSN	PK	48	51					
341 Toledo	12:00	-5	-8	-7					
342 Eastern Michigan	ESPNU	52.5	54	53					
343 TCU	8:00	69.5	64.5	61					
344 Baylor	ESPN2	-2	-3	-3					
345 Northwestern	12:00	48.5	-1	-2					
346 Purdue	BTN	-2	46.5	46					
347 Minnesota	12:00	46.5	-3	-1					
348 Illinois	FS1	-3	45.5	45					
349 Indiana	3:30	-6	-7.5	-7					
350 Michigan State	Peacock	53.5	51.5	51					
351 North Carolina	3:30	-1	-2.5	-3					
352 Florida State	ACCN	47.5	51	51					
353 Florida	3:30	51.5	52	52					
354 Georgia	ABC	-15	-16	-18					
355 Stanford	12:00	49.5	46.5	51					
356 NC State	ACCN	-10	-10	-11					
357 Memphis	12:00	-8	-7.5	-8					
358 UTSA	ESPN2	63.5	61.5	58					
359 Middle Tennessee	3:30	53.5	51	50					
360 UTEP	CBSSN	-3	-3	-2					
361 Texas Tech	3:30	53.5	56.5	58					
362 Iowa State	ESPN	-12	-13.5	-14					
363 Arizona State	7:00	-1	-3	-1					
364 Oklahoma State	FS1	56.5	58.5	55					
365 Pittsburgh	8:00	58.5	58.5	58					
366 SMU	ACCN	-6	-7.5	-8					

Games in Rotation Order

HOME TEAM IN CAPS

Wednesday, October 30th

Jacksonville State 31 LIBERTY 30. We think this Liberty team is very overrated this year as the Flames are 1-5 ATS failing to cover by 13.4 ppg. They just lost outright as 27-point favorites to lowly Kennesaw State last week. Jacksonville State has played the tougher schedule and is similar in stats. Keep an eye on Jacksonville State QB Tyler Huff who was banged up in last week's game. If he goes, Jacksonville State pulls the small upset.

WESTERN KENTUCKY 37 Kennesaw State 13. WKU has quietly covered six straight games by an average of 11.8 ppg. Their only straight up losses came to Alabama in the opener and by 1-point to Boston College. They're catching Kennesaw State off their biggest win in school history. The Owls offense still ranks dead last in yards per play and yards per game. We haven't bet side or total.

Thursday, October 31st

Tulane 37 CHARLOTTE 21. Happy Halloween! Tulane is traveling on a short week after a 45-37 win at North Texas last week. They have won 5 straight games (4-1 ATS). Charlotte has been playing better as of late and competed very well with Memphis last week before losing 33-28. We like the OVER here.

Friday, November 1st

CONNECTICUT 28 Georgia State 22. Connecticut is playing their 6th straight home game while Georgia State is playing their 3rd straight game on the road. However, Georgia State has played the much tougher schedule and UConn benefited from playing a Rice team with a backup QB last week. Our numbers like UConn here.

South Florida 28 FLORIDA ATLANTIC 25. Both teams have QB issues here. It looks like Byrum Brown will be out again for USF. Meanwhile, FAU's Cam Fancher is still banged up. FAU has been the better team in the stats but USF has played the much tougher schedule.

BOISE STATE 41 San Diego State 18. Boise State escaped Las Vegas with a win last Friday over UNLV. The Broncos will now be heavy favorites in each of their last 5 games and will likely host the Mountain West Championship game making them the clear favorites to make the playoffs. They are playing a sneaky San Diego State team that is playing better as of late under first-year coach Sean Lewis. The Aztecs nearly upset Washington State last week as 16.5-point underdogs. We think Boise will try to get RB Jeanty a big game. We like OVER.

Saturday, November 2nd

Virginia Tech 28 SYRACUSE 25. Syracuse is coming off a very misleading blowout loss to Pitt last Thursday as QB Kyle McCord threw three "Pick 6's" all in the first half. Meanwhile, VT was outgained by 123 yards in a misleading 21-6 win over Georgia Tech. The Hokies also have Clemson at home on deck. They are the better team in the stats (+0.7 vs -0.4 in ypp margin) and have played the tougher schedule (No. 47 vs No. 70) but we like the spot for the Cuse.

CLEMSON 36 Louisville 25. One of the worst spots of the week here for Louisville. The Cardinals are playing a 7th straight week coming off 6 competitive games. Louisville has massively under-achieved as of late failing to cover in 5 straight games. Meanwhile, Clemson is coming off a bye after blowing out 6 straight opponents. Louisville has played the tougher schedule (No. 28 vs No. 61) and has a similar ypp margin (+1.5 vs +1.7) but again, it's not a good spot.

APPALACHIAN STATE 30 Old Dominion 29. ODU has shocked us and the market so far this season pulling four outright upsets already. The Monarch are the much better team in yards per play margin (-0.1 vs -0.9) and have played a slightly tougher schedule. However, they did lose outright in their only favorite role of the season so far. They're playing an App State team that got their first win since Hurricane Helene flooded their town last month. Our ratings lean App St.

CENTRAL FLORIDA 31 Arizona 25. We'd like to sell both teams if we could. Arizona is 1-7 ATS on the season failing to cover their games by 12.1 ppg. Meanwhile, UCF has lost 5 straight games (1-4 ATS) since a 3-0 start. The Knights were bet to a -3 favorite last week vs unbeaten BYU but lost 37-24. UCF still has a +1.1 ypp margin (No. 36) but we can't trust their pass game right now.

ARMY 31 Air Force 10. What a difference a year makes as Army was a 18.5-point road underdog vs Air Force last year (won outright 23-3) and now find themselves a 22.5-point favorite. You wouldn't think a game involving two service academies would swing 6 TD's in a calendar year but that's CFB in 2024. Army is 6-1 ATS covering their games by 10.9 ppg. Air Force is 0-7 ATS failing to cover their games by 11.6 ppg. This is only the 3rd time Army has been favored in this series since 1991. We lean AF.

AUBURN 27 Vanderbilt 21. How can you not bet Vanderbilt here as the Commodores are a perfect 5-0 ATS as underdogs this year? They nearly pulled another shocker last week losing by only 3 to No. 5 Texas as 17-point underdogs. Meanwhile, Auburn has lost outright three times as a favorite already. Auburn is +2.0 in ypp margin (No. 12) while Vanderbilt is +0.0. Our ratings don't see much value but we would be interested in Vandy at +7 or more.

Ole Miss 31 ARKANSAS 23. Ole Miss still ranks No. 1 in ypp margin and No. 2 in ypg and scoring margins this season. Arkansas is a respectable +1.1 in ypp margin (No. 24), have outgained their opponents by 133 ypg (No. 13) and have played the much tougher schedule (No. 22 vs No. 63). Ole Miss' offense has disappeared since entering SEC play averaging 31 ppg less than their four non-conference games. Still, the Rebels have one of the best defenses in CFB and should have some urgency knowing they can't lose another game if they want to make the playoff.

MARSHALL 29 UL-Monroe 20. ULM has pulled three outright upsets already this season and Marshall head coach Charles Huff has not been the most trust-worthy favorite in past years. However, Marshall is 6-0-1 ATS on the season covering their games by 5.9 ppg. They are coming off a bye while ULM is on the road for a 2nd straight week. Our ratings really like ULM here but deep diving the game further, we only lean ULM.

MIAMI, FL 38 Duke 18. We think Duke is overrated. The Blue Devils have only played the No. 81 schedule. Last week they lost at home to SMU despite a +6 TO margin. Prior to that loss, teams were 124-1 straight up when having a +6 TO advantage since 2000. Head coach Manny Diaz is heading back to where he was fired a few years ago so expect a chip on his shoulder. Meanwhile, unbeaten Miami is No. 1 in ypp margin this season (+262 ypg).

Buffalo 26 AKRON 25. Akron has played the more difficult schedule (No. 78 vs No. 117) but Buffalo has the better ypp margin (-0.5 vs -1.1). Both teams offense have struggled ranking No. 117 and No. 121 in total offense. However, Buffalo games have went OVER in each of their last 4 and that's where our lean is.

Toledo 30 EASTERN MICHIGAN 23. Toledo has lost 3 games outright as a favorite already this season (did pull a pair of upsets). Last week was a disheartening home loss to arch rival Bowling Green that will likely have the Rockets on the outside looking in as far as the MAC Championship goes. EMU is off a road upset loss to Akron. The Eagles are a phony 5-3 as they are -1.3 in ypp margin (No. 125) despite playing the No. 149 schedule (including FCS teams).

BAYLOR 32 TCU 29. Important game for bowl positioning in the Big 12 and both head coaches job security. TCU is +1.3 in ypp margin while Baylor is +1.1. Baylor has played the tougher schedule (No. 19 vs No. 45). There's been some money on the UNDER so far this week and that is where our lean is.

Northwestern 24 PURDUE 22. It is tough making Northwestern a road favorite but that is how bad Purdue has been this year. The Boilers are No. 128 in ypp margin and No. 132 in scoring margin. They are coming off a bye and have played the more difficult schedule. We think the Northwestern defense is the best unit and they have the better coaching staff.

Minnesota 23 ILLINOIS 22. A ton of money has come in on Minnesota in this game. The Gophers are 6-1-1 ATS on the season with an average cover of 7.4 ppg. They're coming off a blowout win over Maryland. Meanwhile, despite a 6-2 record Illinois is -0.1 in ypp margin (No. 88) and -9.5 in ypg margin (No. 88) this season. With that being said, we can't get our ratings to the current Minnesota -3 number.

Indiana 29 MICHIGAN STATE 22. Keep an eye on the status of Indiana QB Kurtis Rourke. There is some optimism he could return here after missing last week's game. The Hoosiers have been a machine covering 7 straight games. Their scoring margin swing of 40 ppg from last season is the biggest in CFB in at least 50 years. They have played the No. 91 schedule while Michigan State has played the No. 21 schedule. MSU had a misleading loss to Michigan last week. We lean MSU at +7.5 or more and will get a big number if Rourke does play.

North Carolina 27 FLORIDA STATE 24. Mack Brown is 0-8 all-time vs Florida State in his career. This is likely his final chance to beat the Noles and who hasn't this season with FSU having an historically bad year. We like what we saw from NC out of the bye with their blowout win over UVA. It was the Tar Heels' first ATS cover of the season. With FSU now eliminated from bowl contention, what else is there to play for?

† **Georgia 35 Florida 17.** @Everbank Stadium in Jacksonville, FL. Both teams are coming off a bye after their best performances of the season. Florida blew out Kentucky as 2.5-point underdogs in true freshman QB DJ Lagway's coming out party. Meanwhile, Georgia crushed then No. 1 Texas 30-15. Florida actually has the better ypp margin (+1.6 vs +1.5) but Georgia has played a tougher schedule so far. Plus, we trust Kirby Smart and Co. with two weeks to prep vs a young QB and that Florida defense has benefited from questionable offenses in recent games. We like Georgia.

NC STATE 31 Stanford 20. A really tough spot for Stanford here traveling across the country for the 4th time in 7 weeks playing a NC State team fresh off a bye. The Cardinal have dropped 5 straight games (0-4-1 ATS). NC State has a much better ypp margin (-0.1 vs -1.7) and true freshman QB CJ Bailey is getting better by the week coming off back-to-back 300-yard passing performances. We like NC State and the OVER despite the market liking Stanford and UNDER.

Memphis 33 UTSA 25. How does UTSA pick itself up after last week? The Roadrunners led Tulsa 35-7 at halftime. They still led 42-17 late in the 3Q but somehow lost 46-45. One of the preseason favorites in the AAC and UTSA will probably miss out on a bowl game now. Memphis is 7-1 but only 1-4 ATS in their last 5 games as their defense is starting to get exposed. We haven't bet side or total yet.

UTEP 26 Middle Tennessee 24. UTEP QB Skyler Locklear is questionable here. DJ Pickles left a lot to be desired replacing Locklear in their last game. UTEP does have better ypp (-0.9 vs -1.5), ypg (-78.9 vs -128.6) and ppg (-13.3 vs -19.4) margins. MT's defense is the weakest unit. We can't get involved until UTEP's QB situation clears.

IOWA STATE 36 Texas Tech 22. As of Wednesday morning, it looks like Texas Tech QB Behren Morton will play here. The Red Raiders are coming off a very tough loss to TCU where they blew a second half lead. Unbeaten Iowa State is fresh off a bye. The Cyclones are No. 12 in ypg margin at +134 while Texas Tech has actually been outgained on the season. We lean OVER.

Arizona State 28 OKLAHOMA STATE 27. Arizona State is off a bye while Oklahoma State is reeling. The Cowboys have now lost 5 straight games (1-4 ATS) and it looks like it will be a losing season. ASU QB Leavitt looks like he is more probable than questionable at this point. ASU is much better in the stats as they are +1.0 in ypp margin while Oklahoma State is -1.1 in ypp margin (No. 120) and have been outgained by 100 ypg (No. 124). Still, our power ratings can't get to ASU to a FG where the line is at now.

SMU 33 Pittsburgh 25. Raise your hand if you had these two teams unbeaten in ACC play at this point in the season. SMU did have high expectations but after nearly losing to Nevada in the opener and then losing to BYU, they have righted the ship with 5 straight wins (4-1 ATS). Somehow they won last week despite being -6 in TO's at Duke. Teams were on a 1-124 run when having a -6 TO margin. Meanwhile, Pitt is 7-0 SU and 6-1 ATS. They did have a misleading 41-13 win over Syracuse last week where they were +5 in TO's and had three "Pick 6's". Both QB's are banged up and questionable at press-time. We like SMU in this game but at -7 or less.

Navy 32 RICE 22. Navy suffered their first loss of the season last week as they were blown out by Notre Dame 51-14. The Mids had not turned it over since Week 1 but had 6 TO's vs the Irish. They're facing a Rice team that played without QB Warner last week. The Owls then fired head coach Mike Bloomgren after a 24-52 record in 7 seasons. Lot of moving parts here and Navy QB Horvath had a thumb issue last week. Navy games are 7-0 to the OVER by 16 ppg.

UAB 31 Tulsa 28. Tulsa had one of the biggest comebacks in recent CFB history last week rallying from a 35-7 halftime deficit to upset UTSA 46-45 as 9.5-point underdogs. UAB does come in off a bye as they have had a massively disappointing season so far. QB Zeno will be out again this week. UAB has played the tougher schedule (No. 66 vs No. 110) and is better in ypp margin (-0.9 vs -1.1).

Kansas State 28 HOUSTON 17. Houston pulled another upset last week rallying to beat Utah 17-14. While the offense has struggled, the defense ranks No. 25 in total D. Kansas State came-from-behind to beat arch rival Kansas for a 16th straight season last week. The Wildcats should be favored in every game until the final week of the season at Iowa State. However, we think this Wildcat team is a little overrated and we lean with UH here.

Coastal Carolina 29 TROY 25. Troy took some money in the market last week and ended up being the right side as they only lost by 3 at Arkansas State. QB Caldwell gives them a little more in the passing game when he's not throwing INT's. Coastal comes in off a bye and needs this for bowl positioning. We haven't bet side or total here.

SOUTH ALABAMA 32 Georgia Southern 27. South Alabama is the much better team in the stats as they are +0.7 in ypp margin, +54.8 in ypg margin and +12.7 in scoring margin while Georgia Southern is -1.2 ypp, -78.5 ypg and -1.9 in scoring. GS's No. 126 defense will have difficulty vs SA's No. 19 offense. Pass.

Usc 27 WASHINGTON 26. Nothing says Big Ten football like USC at Washington. Both have struggled in their new conference this season and both need it if they have bowl aspirations. Washington is better in the stats with a +2.1 ypp margin (No. 11) and +164 ypg margin (No. 10) vs USC's +0.7 ypp (No. 47) +64.8 ypg (No. 42). We bet UNDER and also lean Washington if you can find a +3.

IOWA 24 Wisconsin 20. Iowa is going to Brendan Sullivan at QB and we think he is an upgrade over Cade McNamara. Iowa is +0.7 in ypp margin while Wisconsin is +0.4 for the season. Wisconsin might have been given too much credit for beating Purdue, Rutgers and Northwestern. They couldn't get the job done last week vs a Penn State team with a backup QB. We lean Iowa.

NEBRASKA 25 UCLA 18. UCLA comes in off a much-needed bye after playing arguably the toughest schedule in the country so far. Their defense has hung tough that has allowed them to cover 4 of their last 5 all as an underdog. It was their offense that finally got going though in their win over Rutgers prior to the bye. Meanwhile, Nebraska is off a great effort at Ohio State that just came up short. Not sure we can trust their offense though to lay a TD. Pass.

Oregon 31 MICHIGAN 16. Michigan looks like they have finally figured out the QB position as Davis Warren had the most efficient game by a UM QB last week in the win over Michigan State. Still, this is an extremely limited No. 124 offense that now faces an Oregon defense that can stack the line of scrimmage as the Ducks secondary can lock down the weak UM WR's. The other side of the ball is more interesting. Can UM's talented DL get pressure? Oregon's OL is improved from the start of the season but will get tested here. We like Oregon but don't like the price. Lean OVER.

NEW MEXICO 34 Wyoming 27. Both teams had misleading losses last week (see page 1). NM has certainly been better in the stats at -0.5 in ypp (Wyoming -1.6) and -10.3 ypg (WY -105.1). They've also played the slightly tougher schedule. NM's No. 10 offense is the best unit on the field but we can't lay more than a TD here.

MISSISSIPPI STATE 38 Massachusetts 18. After suffering 7 straight losses, Mississippi State really needs a feel-good win here. They have played the 5th toughest schedule in the country (per Sagarin) while UMass has played the No. 130 schedule. UMass was crushed by fellow SEC member Missouri a few weeks ago. While Miss St is not as good as Missouri, we feel have motivation for margin here.

Texas A&M 24 SOUTH CAROLINA 23. We like South Carolina in this game for a variety of reasons. Number one, we like the spot as SC comes in off a bye while A&M is off their biggest win of the season. That win over LSU was misleading as A&M was outgained, were +2 in TO's and benefited from 3 missed LSU FG's. A&M has been outgained in 3 of their last 4 games. SC is 2 plays away from being 6-1 as they easily could have beat both LSU and Alabama. We don't think they will be intimidated here.

TENNESSEE 29 Kentucky 14. Kentucky has been one of the biggest disappointments in all of CFB this year. You can see their upside in a 1-point loss to Georgia and a road upset of Ole Miss. However, they have now lost 4 games outright as a favorite this year including 3 straight games. They're taking on a Tennessee team fresh off a bye. The Vols beat rivals Florida and Alabama prior to the bye and still rank in the Top 5 in ypg and ppg margins. Tough laying this kind of number though with an offense that is averaging just 22 ppg in SEC play.

FRESNO STATE 32 Hawaii 19. Both teams come in off conference wins last week. Fresno is slightly better in the stats (+0.3 in ypp vs -0.1) and has played the slightly tougher schedule (No. 97 vs No. 102). That doesn't equate to laying 2 TD's but we don't like backing Hawaii on the mainland. Lean OVER.

Colorado State 24 NEVADA 23. Will QB Lewis play for Nevada? They missed him last week in the loss at Hawaii. Colorado State has quietly covered 5 straight games. The stats and strength of schedule say slight value on Nevada but we need Lewis to play.

Ohio State 23 PENN STATE 20. We don't like the Ohio State OL right now. Their LT Simmons is out for the season and his backup was playing very poorly and got hurt last week. Now they face a great Penn State pass rush led by Abdul Carter. However, Penn State QB Allar is questionable here. You can't really trust either coach in a big time game at this point. We prefer the UNDER with both D's having the edges at this point.

2024 College Football Power Ratings (Vegas Ratings Not AP Poll Style)

Rk	School	Start	Now	+/-	Rk	School	Start	Now	+/-	Rk	School	Start	Now	+/-
1.	Georgia	95.11	93.11	-2.0	51.	UCLA	71.12	69.12	-2.0	101.	Coastal Carolina	58.22	56.22	-2.0
2.	Ohio State	92.52	91.52	-1.0	52.	UCF	73.61	69.11	-4.5	102.	Ohio	52.65	56.15	+3.5
3.	Oregon	90.42	90.42	0.0	53.	Illinois	66.02	69.02	+3.0	103.	Western Michigan	55.66	55.66	0.0
4.	Texas	88.21	89.71	+1.5	54.	Army	54.91	68.91	+14.0	104.	New Mexico	46.48	54.98	+8.5
5.	Alabama	88.72	87.22	-1.5	55.	Utah	79.40	68.90	-10.5	105.	Nevada	48.03	54.53	+6.5
6.	Ole Miss	86.00	86.00	0.0	56.	North Carolina	71.90	67.90	-4.0	106.	San Diego State	57.35	54.35	-3.0
7.	Penn State	85.96	85.96	0.0	57.	Georgia Tech	70.18	67.68	-2.5	107.	Hawaii	54.47	53.97	-0.5
8.	Clemson	81.81	84.81	+3.0	58.	Oklahoma State	78.15	67.65	-10.5	108.	Arkansas State	58.85	53.85	-5.0
9.	Notre Dame	85.69	84.69	-1.0	59.	Texas Tech	72.08	67.58	-4.5	109.	Florida Atlantic	55.84	53.84	-2.0
10.	Tennessee	81.29	84.29	+3.0	60.	Arizona	76.54	67.54	-9.0	110.	Georgia State	52.20	53.20	+1.0
11.	Miami (FL)	79.74	84.24	+4.5	61.	Maryland	70.91	67.41	-3.5	111.	UL-Monroe	43.76	52.76	+9.0
12.	LSU	84.83	81.83	-3.0	62.	Memphis	70.10	66.60	-3.5	112.	Rice	59.39	52.39	-7.0
13.	Texas A&M	82.20	81.20	-1.0	63.	Boston College	64.96	66.46	+1.5	113.	Charlotte	52.31	52.31	0.0
14.	Iowa State	76.43	79.93	+3.5	64.	Rutgers	70.72	66.22	-4.5	114.	Utah State	56.44	51.44	-5.0
15.	Indiana	65.47	79.47	+14.0	65.	Texas State	63.41	65.91	+2.5	115.	Eastern Michigan	47.61	50.11	+2.5
16.	Kansas State	79.78	78.78	-1.0	66.	Virginia	65.86	65.86	0.0	116.	Buffalo	49.03	50.03	+1.0
17.	SMU	75.80	77.80	+2.0	67.	UL-Lafayette	62.01	65.51	+3.5	117.	Troy	59.28	49.78	-9.5
18.	South Carolina	73.53	77.53	+4.0	68.	Duke	65.42	65.42	0.0	118.	Louisiana Tech	48.66	49.66	+1.0
19.	USC	78.07	77.07	-1.0	69.	Florida State	82.19	65.19	-17.0	119.	Central Michigan	52.77	48.77	-4.0
20.	Boise State	72.92	76.42	+3.5	70.	Houston	62.42	64.92	+2.5	120.	Wyoming	60.13	48.63	-11.5
21.	Louisville	76.62	76.12	-0.5	71.	NC State	75.27	64.77	-10.5	121.	Temple	45.52	48.52	+3.0
22.	Arkansas	70.58	76.08	+5.5	72.	James Madison	63.14	64.64	+1.5	122.	Tulsa	52.78	47.78	-5.0
23.	Iowa	75.37	75.87	+0.5	73.	Navy	54.98	63.98	+9.0	123.	Akron	46.20	47.70	+1.5
24.	Auburn	77.03	75.03	-2.0	74.	Fresno State	63.89	63.89	0.0	123.	FIU	46.70	47.70	+1.0
25.	Wisconsin	75.52	75.02	-0.5	75.	Western Kentucky	59.00	62.00	+3.0	125.	Air Force	60.05	47.55	-12.5
26.	Florida	75.32	74.82	-0.5	76.	Wake Forest	64.85	61.35	-3.5	126.	UAB	57.60	46.60	-11.0
27.	BYU	64.66	74.66	+10.0	77.	Mississippi State	64.28	61.28	-3.0	127.	Ball State	50.20	46.20	-4.0
28.	Colorado	69.08	74.58	+5.5	78.	Northwestern	66.12	61.12	-5.0	128.	Massachusetts	46.53	46.03	-0.5
29.	Virginia Tech	76.38	74.38	-2.0	79.	Jacksonville State	58.07	61.07	+3.0	129.	Southern Miss	51.95	44.95	-7.0
30.	Nebraska	72.67	73.17	0.5	80.	South Alabama	59.72	60.72	+1.0	130.	Middle Tennessee	50.25	44.75	-5.5
31.	California	70.16	73.16	+3.0	81.	North Texas	56.15	60.65	+4.5	131.	UTEP	46.57	44.57	-2.0
32.	Missouri	81.99	72.99	-9.0	82.	Miami (OH)	60.67	60.17	-0.5	132.	New Mexico St	48.60	40.60	-8.0
33.	Michigan	83.42	72.92	-10.5	83.	Old Dominion	54.43	59.93	+5.5	133.	Kennesaw State	40.78	40.28	-0.5
34.	Kansas	75.73	72.73	-3.0	84.	Bowling Green	57.58	59.58	+2.0	134.	Kent State	44.53	37.53	-7.0
35.	Washington	74.05	72.55	-1.5	85.	Liberty	68.78	59.28	-9.5					
36.	Pittsburgh	66.99	72.49	+5.5	86.	Marshall	56.45	58.95	+2.5					
37.	TCU	75.10	72.10	-3.0	87.	Toledo	58.74	58.74	0.0					
38.	Baylor	69.72	71.72	+2.0	88.	Oregon State	67.06	58.06	-9.0					
39.	Kentucky	76.16	71.66	-4.5	89.	Northern Illinois	58.04	58.04	0.0					
40.	Oklahoma	84.15	71.65	-12.5	90.	Sam Houston St	50.71	57.71	+7.0					
41.	Vanderbilt	58.29	71.29	+13.0	91.	USF	64.19	57.69	-6.5					
42.	UNLV	64.19	71.19	+7.0	92.	Colorado State	57.68	57.68	0.0					
43.	Tulane	63.99	70.99	+7.0	93.	Connecticut	50.11	57.61	+7.5					
44.	Minnesota	68.38	70.88	+2.5	93.	San Jose State	55.11	57.61	+2.5					
45.	Michigan State	64.80	70.30	+5.5	95.	Purdue	65.99	57.49	-8.5					
46.	Cincinnati	67.65	69.65	+2.0	96.	Appalachian State	66.80	57.30	-9.5					
47.	Arizona State	64.52	69.52	+5.0	96.	Georgia Southern	56.30	57.30	+1.0					
48.	Washington State	65.98	69.48	+3.5	98.	Stanford	64.26	57.26	-7.0					
49.	Syracuse	66.79	69.29	+2.5	99.	East Carolina	58.74	56.74	-2.0					
50.	West Virginia	74.26	69.26	-5.0	100.	UTSA	67.48	56.48	-11.0					

Biggest Gains From Start Of Season		Biggest Losses From Start Of Season	
Indiana	+14.0	Florida State	-17.0
Army	+14.0	Air Force	-12.5
Vanderbilt	+13.0	Oklahoma	-12.5
BYU	+10.0	Wyoming	-11.5
Navy	+9.0	UAB	-11.0
UL-Monroe	+9.0	UTSA	-11.0
New Mexico	+8.5	Oklahoma State	-10.5
Connecticut	+7.5	Michigan	-10.5
UNLV	+7.0	Utah	-10.5
Sam Houston St	+7.0	NC State	-10.5
Tulane	+7.0	Appalachian St	-9.5
Nevada	+6.5	Liberty	-9.5
		Troy	-9.5

2024 Week 10 College Football Power Ratings by Conference

American				MAC				Sun Belt				SEC			
Rk	Team	Rating	Rk	Team	Rating	Rk	Team	Rating	Rk	Team	Rating	Rk	Team	Rating	
43.	Tulane	70.99	82.	Miami (OH)	60.17	65.	Texas State	65.91	69.	Duke	65.42	23.	Iowa	75.87	
54.	Army	68.91	84.	Bowling Green	59.58	67.	UL-Lafayette	65.51	71.	Florida State	65.19	25.	Wisconsin	75.02	
62.	Memphis	66.60	87.	Toledo	58.74	72.	James Madison	64.64	76.	NC State	64.77	30.	Nebraska	73.17	
73.	Navy	63.98	89.	Northern Illinois	58.04	80.	South Alabama	60.72	76.	Wake Forest	61.35	33.	Michigan	72.92	
81.	North Texas	60.65	102.	Ohio	56.15	83.	Old Dominion	59.93	98.	Stanford	57.26	35.	Washington	72.55	
91.	USF	57.69	103.	Western Michigan	55.66	86.	Marshall	58.95				44.	Minnesota	70.88	
99.	East Carolina	56.74	115.	Eastern Michigan	50.11	96.	Appalachian State	57.30				45.	Michigan State	70.30	
100.	UTSA	56.48	116.	Buffalo	50.03	96.	Georgia Southern	57.30				51.	UCLA	69.12	
109.	Florida Atlantic	53.84	119.	Central Michigan	48.77	101.	Coastal Carolina	56.22				53.	Illinois	69.02	
112.	Rice	52.39	123.	Akron	47.70	108.	Arkansas State	53.85				61.	Maryland	67.41	
113.	Charlotte	52.31	127.	Ball State	46.20	110.	Georgia State	53.20				64.	Rutgers	66.22	
121.	Temple	48.52	134.	Kent State	37.53	111.	UL-Monroe	52.76				78.	Northwestern	61.12	
122.	Tulsa	47.78				117.	Troy	49.78				95.	Purdue	57.49	
126.	UAB	46.60				129.	Southern Miss	44.95							
CUSA				Mountain West				ACC				SEC			
Rk	Team	Rating	Rk	Team	Rating	Rk	Team	Rating	Rk	Team	Rating	Rk	Team	Rating	
75.	Western Kentucky	62.00	40.	Boise State	76.42	8.	Clemson	84.81	52.	UCF	69.11	1.	Georgia	93.11	
79.	Jacksonville State	61.07	42.	UNLV	71.19	11.	Miami (FL)	84.24	55.	Utah	68.90	4.	Texas	89.71	
85.	Liberty	59.28	74.	Fresno State	63.89	17.	SMU	77.80	58.	Oklahoma State	67.65	5.	Alabama	87.22	
90.	Sam Houston State	57.71	92.	Colorado State	57.68	21.	Louisville	76.12	59.	Texas Tech	67.58	6.	Ole Miss	86.00	
118.	Louisiana Tech	49.66	93.	San Jose State	57.61	29.	Virginia Tech	74.38	60.	Arizona	67.54	10.	Tennessee	84.29	
123.	FIU	47.70	104.	New Mexico	54.98	31.	California	73.16	70.	Houston	64.92	12.	LSU	81.83	
130.	Middle Tennessee	44.75	105.	Nevada	54.53	36.	Pittsburgh	72.49				13.	Texas A&M	81.20	
131.	UTEP	44.57	106.	San Diego State	54.35	49.	Syracuse	69.29				18.	South Carolina	77.53	
132.	New Mexico State	40.60	107.	Hawaii	53.97	56.	North Carolina	67.90				22.	Arkansas	76.08	
133.	Kennesaw State	40.28	114.	Utah State	51.44	57.	Georgia Tech	67.68				24.	Auburn	75.03	
			120.	Wyoming	48.63	63.	Boston College	66.46				26.	Florida	74.82	
			125.	Air Force	47.55	66.	Virginia	65.86				32.	Missouri	72.99	
												39.	Kentucky	71.66	
												40.	Oklahoma	71.65	
												41.	Vanderbilt	71.29	
												77.	Mississippi State	61.28	

Week 10 Computer Projected Lines for Every CFB Game

For the past eight seasons we have posted computer projected lines for every game on Wednesday. **Games where there was of difference of more than 3 points saw our computer lines actually beat the Vegas line at a 487-414-14 (54.1%) clip!** That's pretty solid and actually better than our own handicapping in some seasons. Keep in mind, these computer lines don't take into consideration off-the-field factors like revenge or flat spots or if there are late-week injuries. They are basically a power-rating number difference between the two teams that also takes into consideration the home field advantage.

This year's record is 13-18 so far. Of the 2 games where our computer is off more than 3 points compared to the Vegas line (highlighted), our favorite team this week to back would be **Oklahoma State +3.**

The Comp column is the computer projected line and the Diff column is the difference between the Vegas line and the Computer line. "+" numbers in the difference column say back the underdog. "-" numbers in the difference column say back the favorite. Let us know if you have questions.

Tuesday, Oct 29th				Saturday, Nov 2nd					
Line	Comp	Diff	Line	Comp	Diff	Line	Comp	Diff	
301 New Mexico State			351 North Carolina			352 Florida State	+2.5	0.0	+2.5
302 FIU	-7.0	-8.9	-1.9	353 Florida		354 Georgia	-16.0	-18.3	-2.3
303 Louisiana Tech			355 Stanford			356 NC State	-10.0	-10.5	-0.5
304 Sam Houston St	-10.5	-10.1	+0.4	357 Memphis		358 UTSA	+7.0	+7.6	-0.6
305 UL-Lafayette			359 Middle Tennessee			360 UTEP	-3.0	-1.8	+1.2
306 Texas State	-4.5	-2.1	+2.4	361 Texas Tech		362 Iowa State	-13.5	-14.9	-1.4
Wednesday, Oct 30th				Thursday, Oct 31st					
Line	Comp	Diff	Line	Comp	Diff	Line	Comp	Diff	
307 Jacksonville State			363 Arizona State			364 Oklahoma State	+3.0	-1.4	+4.4
308 Liberty	-2.5	-0.7	+1.8	365 Pittsburgh		366 SMU	-7.5	-7.6	-0.1
309 Kennesaw State			367 Navy			368 Rice	+11.0	+9.8	+1.2
310 Western Kentucky	-24.0	-24.2	-0.2	369 Tulsa		370 UAB	-3.0	-1.6	+1.4
Thursday, Oct 31st				Friday, Nov 1st					
Line	Comp	Diff	Line	Comp	Diff	Line	Comp	Diff	
399 Tulane			371 Kansas State			372 Houston	+13.0	+11.4	+1.6
400 Charlotte	+14.5	+16.9	-2.4	373 Coastal Carolina		374 Troy	+4.0	+4.2	-0.2
Friday, Nov 1st				Saturday, Nov 2nd					
Line	Comp	Diff	Line	Comp	Diff	Line	Comp	Diff	
315 Georgia State			375 Georgia Southern			376 South Alabama	-6.0	-5.7	+0.3
316 Connecticut	-7.5	-5.9	+1.6	377 USC		378 Washington	+2.5	+1.5	+1.0
317 South Florida			379 Wisconsin			379 Wisconsin	+2.5	+1.5	+1.0
318 Florida Atlantic	+2.5	+1.8	+0.7	380 Iowa		381 UCLA			
319 San Diego State			382 Nebraska			382 Nebraska	-6.5	-6.6	-0.1
324 Boise State	-23.5	-24.8	-1.3	383 Oregon		383 Oregon			
Saturday, Nov 2nd				Sunday, Nov 3rd					
Line	Comp	Diff	Line	Comp	Diff	Line	Comp	Diff	
321 Virginia Tech			384 Michigan	+15.0	+13.8	+1.2	385 Wyoming		
322 Syracuse	+4.0	+2.6	+1.4	385 Wyoming		386 New Mexico	-7.5	-7.8	-0.3
323 Louisville			386 New Mexico	-7.5	-7.8	-0.3	387 Massachusetts		
324 Clemson	-10.5	-12.4	-1.9	387 Massachusetts		388 Mississippi State	-18.0	-18.0	0.0
325 Old Dominion			388 Mississippi State	-18.0	-18.0	0.0	389 Texas A&M		
326 Appalachian St	+2.5	-0.1	+2.6	389 Texas A&M		390 South Carolina	+2.5	+0.9	+1.6
327 Arizona			390 South Carolina	+2.5	+0.9	+1.6	391 Kentucky		
328 Central Florida	-6.0	-4.8	+1.2	391 Kentucky		392 Tennessee	-16.5	-15.6	+0.9
329 Air Force			392 Tennessee	-16.5	-15.6	+0.9	393 Hawaii		
330 Army	-22.0	-23.9	-1.9	393 Hawaii		394 Fresno State	-13.5	-12.4	+1.1
331 Vanderbilt			394 Fresno State	-13.5	-12.4	+1.1	395 Colorado State		
332 Auburn	-6.5	-6.7	-0.2	395 Colorado State		396 Nevada	+1.5	+0.9	+0.6
333 Ole Miss			396 Nevada	+1.5	+0.9	+0.6	397 Ohio State		
334 Arkansas	+7.0	+7.4	-0.4	397 Ohio State		398 Penn State	+3.5	+1.8	+1.7
335 UL-Monroe			398 Penn State	+3.5	+1.8	+1.7			
336 Marshall	-10.0	-8.4	+1.6						
337 Duke									
338 Miami, FL	-21.0	-21.6	-0.6						
339 Buffalo									
340 Akron	+1.0	+1.1	-0.1						
341 Toledo									
342 Eastern Michigan	+8.0	+6.9	+1.1						
343 TCU									
344 Baylor	-3.0	-2.1	+0.9						
345 Northwestern									
346 Purdue	+1.0	+1.6	-0.6						
347 Minnesota									
348 Illinois	+3.0	-0.1	+3.1						
349 Indiana									
350 Michigan State	+7.5	+6.4	+1.1						

Betting CFB Openers

Every Sunday in Vegas at 11am PT, Circa Sports is the first book in the world to release CFB lines and we bet them every week. We think it's the best value bets we make all week. 2020 was the first season where we tracked every single bet we made and posted them in the weekly newsletters. We were very pleased with our 119-76-3 (61%) record on these Sunday bets with an average line value of 2.6 ppg! In 2021, we were 224-196-5 (53.3%) vs the Circa openers with an average line value of 1.8 ppg. In 2022, we were 314-262-14 (54.5%, CLV 417-122-51 +1.65 ppg). Last year we were 405-358-6 (53.4%, CLV 577-137-55 +2.09 ppg). Below is some of what we bet already. Starting last season, Fan Duel and Draft Kings have been releasing select CFB games a couple hours before Circa so those bets are included below as well.

All bets are either \$550 at Fan Duel, Draft Kings, Westgate and South Point or \$1100 at Circa unless otherwise noted.

- (305) UL-Lafayette +4 (Draft Kings)
- (307) Jacksonville State +2 (Circa)
- (315) Georgia State OVER 47.5 (Circa)
- (315) Georgia State +8.5 (Fan Duel)
- (317) South Florida -2.5 (Draft Kings)
- (319) San Diego State OVER 55.5 (Circa)
- (333) Ole Miss -6 (Circa)
- (335) UL-Monroe +10.5 (Draft Kings)
- (339) Buffalo OVER 46.5 (Circa)
- (340) Akron +2.5 (Draft Kings)
- (345) Northwestern +2 (Circa)
- (350) Michigan State +7.5 (Fan Duel)
- (351) North Carolina -1 (Circa)
- (351) North Carolina -2.5 (Fan Duel)
- (354) Georgia -15 (Circa)
- (355) Stanford OVER 47.5 (Fan Duel)
- (356) NC State -10 (Circa)
- (360) UTEP UNDER 54.5 (Fan Duel)
- (361) Texas Tech OVER 54.5 (Fan Duel)
- (365) Pittsburgh OVER 58.5 (Circa)
- (366) SMU -5.5 (Draft Kings)
- (366) SMU -6 (Circa)
- (369) Tulsa OVER 56.5 (Circa)
- (369) Tulsa +5 (Circa)
- (373) Coastal Carolina OVER 51.5 (Circa)
- (378) Washington UNDER 55.5 (Fan Duel)
- (378) Washington UNDER 56.5 (Circa)
- (383) Oregon OVER 44.5 (Circa)
- (386) New Mexico -6.5 (Draft Kings)
- (390) South Carolina +5.5 (Fan Duel)

Summer Game of Year from Preview Guide:

- (378) Washington +4.5 (Westgate)
- (391) Kentucky +13 (South Point)
- (398) Penn State +5.5 (William Hill)

VIP Records:

NFL Plays: 8-9-1 -3.85 units (CLV 4-0-14 +0.14 ppg)
 FBS vs FBS Plays: 35-18-1 +14.2 units (CLV 30-14-10 +0.73 ppg)
 FBS vs FCS Plays: 0-3 -3.4 units (CLV 3-0 +3.2 ppg)
 FCS vs FCS Plays: 0-1 -1.1 units (CLV 1-0 +6.0 ppg)
 Overall: 43-31-2 +5.85 units (CLV 38-14-24 +0.75 ppg)
 FBS/FCS Leans/Player Props: 24-31-6
 NFL Regular Season Leans: 45-33
 Teaser Legs: 21-7
 NFL Preseason Leans: 6-5

Games in Rotation Order
Thursday, October 31st

HOME TEAM IN CAPS

Houston 21 N.Y. JETS 20. This line stinks. Yes, the Texans are banged up including losing WR Stefon Diggs for the rest of the season. However, Houston is the better team in the stats (+0.6 ypp margin vs +0.4). The Texans are No. 7 in DVOA (Jets No. 24) and they have played the tougher schedule so far. The Jets are coming off a disastrous upset loss to the Patriots as 7-point favorites. They have failed to cover in 5 straight games. Make it 6.

Sunday, November 3rd

TENNESSEE 21 New England 17. Obviously two of the worst teams in the NFL so far this season. The Titans are off a 52-14 blowout loss to the Lions as they were -4 in TO's (TEN did have a 416-225 yard edge). Meanwhile, the Pats are off a big upset win over the Jets, their 2nd big upset of the season (opener vs Cincy). Tennessee is -0.2 in ypp margin while NE is -1.3. The Titans are also better in DVOA (advanced stat metric) and have played the tougher schedule. Even with their 1-6 ATS mark, we lean with them here.

L.A. Chargers 23 CLEVELAND 21. Jameis Winston is a major upgrade both on and off the field for the Cleveland Browns. It showed last week in their upset of the Ravens as 7.5-point underdogs. A Cleveland offense that hadn't topped 20 points in any game got 29 points and 401 yards. They're facing a Chargers team that is off a blowout win over the Saints and need to start stacking wins to ensure a playoff berth. The Chargers full-season stats (-0.1 ypp margin vs -1.1) say this line is cheap but Cleveland could be a fundamentally different team now. We like the Browns in a teaser, lean OVER and also like Cleveland team total OVER.

New Orleans 24 CAROLINA 17. The Saints are hopeful that Derek Carr can return here. That's why they are laying a TD on the road. Both teams have been hapless in recent weeks. The Saints have lost 6 straight (1-5 ATS) and have lost by at least 2 TD's in 4 straight. Carolina is 1-7 SU and 1-7 ATS on the season. Every loss has been by 10 points or more. They're approaching historically bad numbers. However, we can't get to this number without knowing Carr's full health status. Bryce Young will start again for the Panthers. Lean UNDER.

BUFFALO 28 Miami 21. We say this every week but Miami head coach Mike McDaniel is so overrated in the betting markets. The Dolphins took a ton of money last week with the return of QB Tagovailoa and proceeded to lose outright as 5-point favorites to Arizona. That drops the Dolphins to 1-6 ATS on the season. They're playing the Bills who are off a blowout win at Seattle. Buffalo ranks as high as No. 2 in Sagarin and No. 5 in DVOA. We lean Bills.

ATLANTA 28 Dallas 24. It's becoming crystal clear that Dallas will be making a head coaching change sometime this season. The Cowboys are now 3-4 and several games back in the division. Meanwhile, Atlanta is much better in the stats (+0.6 ypp vs -0.8) and No. 13 in DVOA (Dallas No. 26). The only reason this line isn't higher is the Cowboys public reputation. We think this line is cheap.

BALTIMORE 27 Denver 18. Denver has definitely been a surprise this year at 5-3 SU and 6-2 ATS. However, they have benefited from playing one of the weakest schedules in the NFL and now face a Baltimore team fresh off an upset loss to Cleveland. The Ravens rank No. 1 in the NFL in yards per play (ypp) margin at +1.3. They rank No. 2 in DVOA and have played a much tougher schedule than the Broncos. We were hoping for a cheaper number here but the market is all over this one.

CINCINNATI 27 Las Vegas 20. Cincinnati let us down big time last week in their blowout loss to the Eagles. It was our favorite NFL play. We still think they are underrated at 3-5 SU despite a +0.4 yards per play margin (No. 12). Obviously, the Raiders had a big effort at home vs the Chiefs last week but still came up short. They are dead-last in TO margin at -13. Cincy has lost outright twice already this season as a 7.5-point favorite. They won't lose here but we can't back them ATS wise.

MINNESOTA 25 Indianapolis 21. Indianapolis has now covered 6 straight after a 23-20 loss to the Texans as 5-point road dogs. They aren't good in the stats at -0.1 ypp and rank No. 20 in DVOA but we do like the move to bench Anthony Richardson in favor of Joe Flacco. Richardson was never going to make it in the league and was a really poor draft pick if you watched any Florida football games. After a 5-0 start, Minnesota is off back-to-back losses but has extra rest. Early money is on Indianapolis and this game did get flexed to Sunday Night.

Washington 23 N.Y. GIANTS 20. Washington is off the dramatic "Hail Mary" win over the Bears that moves them to 6-1-1 ATS on the season. They're facing a Giants team off three straight losses. The G-Men have been underdogs in every single game so far this season. While they rank No. 28 in ypp margin, they have played the much tougher schedule than the Commanders. We will take the hook.

ARIZONA 23 Chicago 22. The market does not like this Arizona team this year as they continually get bet against every week. Arizona is a respectable No. 19 in DVOA and -0.1 in yards per play margin (No. 17) despite facing arguably the toughest schedule in the NFL so far. Meanwhile, the Bears are -0.6 in ypp margin despite playing one of the weakest schedules in the NFL so far. Yes, Chicago will have a ton of fans in the stands. However, we will take Arizona again.

SEATTLE 24 L.A. Rams 23. After a 3-0 start, the Seahawks are not trending in the right direction as they have lost 4 of their last 5 also failing to cover in 4 of those 5. Meanwhile, the Rams are off back-to-back wins and last week's win over Minnesota was arguably their best performance of the season. Seattle is better in the full-season stats (+0.0 in ypp vs -0.6). We like Seattle in a teaser here.

Detroit 25 GREEN BAY 22. Jordan Love did not practice on Wednesday due to his groin injury. That's why the Lions are laying more than a FG here. Since Dan Campbell took over the Lions in 2021, the Lions are incredibly 43-18 ATS (70.5%!). They are 6-1 ATS this season and are fresh off crushing the Titans by 38 points. They rank No. 1 in DVOA, No. 1 in Jeff Sagarin and are No. 3 in ypp margin. Green Bay has been pretty impressive themselves as they are +0.7 in ypp margin (No. 4). We're passing for now.

PHILADELPHIA 27 Jacksonville 19. Philadelphia has won 3 straight and have needed it to stay pace with the surprising Commanders in the division. The Eagles rank No. 5 in ypp margin and No. 5 in Sagarin. Despite a cover last week, the Jags are just 2-6 on the season and will likely be making a coaching change soon. They've been so bad that this game got flexed out of Sunday Night. Not sure we want to lay more than a TD but Philadelphia is a solid teaser.

Monday, November 4th

KANSAS CITY 28 Tampa Bay 18. The Chiefs remain the only unbeaten team in the NFL. They aren't overly impressive statistically at +0.3 ypp but have moved up to No. 4 in DVOA. They obviously have the best HC, QB and DC in the league. The Bucs have lost 4 of their last 6 games. More of the same.

2024 NFL Schedules with Logs

Arizona (SU: 4-4, ATS: 5-3, O/U: 4-3-1)

Date	Opponent	Line	Score	ATS/O/U
9/8	at Buffalo	-		
9/15	L.A. Rams	PK	41-10 W	u47
9/22	Detroit	+3	13-20 L	u51
9/29	Washington	-3	14-22 L	u48
10/6	at San Francisco	+7	24-23 W	u49
10/13	at Green Bay	+5	13-34 L	u47
10/21	L.A. Chargers	+1	17-15 W	u44
10/27	at Miami	+5	28-27 W	u46
11/3	Chicago			
11/10	N.Y. Jets			
11/17				
11/24	at Seattle			
12/1	at Minnesota			
12/8	Seattle			
12/15	New England			
12/22	at Carolina			
12/29	at L.A. Rams			
1/5	San Francisco			

Atlanta (SU: 5-3, ATS: 4-4, O/U: 4-1)

Date	Opponent	Line	Score	ATS/O/U
9/8	Pittsburgh	-4	10-18 L	u43
9/16	at Philadelphia	+5	22-21 W	u46
9/22	Kansas City	+3	17-22 L	u46
9/29	New Orleans	-2	26-24 L	u42
10/3	Tampa Bay	-2	36-30 W	u44
10/13	at Carolina	-6	38-20 W	o46
10/20	Seattle	-3	14-34 L	u51
10/27	at Tampa Bay	-1	31-26 W	u47
11/3	Dallas			
11/10	New Orleans			
11/17	at Denver			
11/24				
12/1	L.A. Chargers			
12/8	at Minnesota			
12/16	at Las Vegas			
12/22	N.Y. Giants			
12/29	at Washington			
1/5	Carolina			

Baltimore (SU: 5-3, ATS: 4-3-1, O/U: 7-1)

Date	Opponent	Line	Score	ATS/O/U
9/5	at Kansas City	+2	20-27 L	u46
9/15	Las Vegas	-9	23-26 L	u42
9/22	at Dallas	-1	28-25 W	o47
9/29	Buffalo	-2	35-10 W	u47
10/6	at Cincinnati	-2	41-38 W	u48
10/13	Washington	-7	30-23 P	o50
10/21	at Tampa Bay	-4	41-31 W	o51
10/27	at Cleveland	-7	24-29 L	o44
11/3	Denver			
11/7	Cincinnati			
11/17	at Pittsburgh			
11/25	at L.A. Chargers			
12/1	Philadelphia			
12/8				
12/15	at N.Y. Giants			
12/21	Pittsburgh			
12/25	at Houston			
1/5	Cleveland			

Buffalo (SU: 6-2, ATS: 5-3, O/U: 4-1)

Date	Opponent	Line	Score	ATS/O/U
9/8	Arizona	-6	34-28 L	o45
9/12	at Miami	-2	31-10 W	u49
9/23	Jacksonville	-4	47-10 W	u46
9/29	at Baltimore	+2	10-35 L	u47
10/6	at Houston	+1	20-23 L	u48
10/14	at N.Y. Jets	-1	23-20 W	o42
10/20	Tennessee	-9	34-10 W	o41
10/27	at Seattle	-3	31-10 W	u45
11/3	Miami			
11/10	at Indianapolis			
11/17	Kansas City			
11/24				
12/1	San Francisco			
12/8	at L.A. Rams			
12/15	at Detroit			
12/22	New England			
12/29	N.Y. Jets			
1/5	at New England			

Carolina (SU: 1-7, ATS: 1-7, O/U: 6-2)

Date	Opponent	Line	Score	ATS/O/U
9/8	at New Orleans	+3	10-47 L	o41
9/15	L.A. Chargers	+4	3-26 L	u38
9/22	at Las Vegas	+5	36-22 W	o40
9/29	Cincinnati	+4	24-34 L	o46
10/6	at Chicago	+4	10-36 L	o40
10/13	Atlanta	+6	20-38 L	o46
10/20	at Washington	+10	7-40 L	u51
10/27	at Denver	+13	14-28 L	u40
11/3	New Orleans			
11/10	at N.Y. Giants (Germany)			
11/17				
11/24	Kansas City			
12/1	Tampa Bay			
12/8	at Philadelphia			
12/15	Dallas			
12/22	Arizona			
12/29	at Tampa Bay			
1/5	at Atlanta			

Chicago (SU: 4-3, ATS: 5-2, O/U: 3-4)

Date	Opponent	Line	Score	ATS/O/U
9/8	Tennessee	-4	24-17 W	u43
9/15	at Houston	+6	13-19 W	u45
9/22	at Indianapolis	+2	16-21 L	u43
9/29	L.A. Rams	-3	24-18 W	o40
10/6	Carolina	-4	36-10 W	o40
10/13	at Jacksonville	+1	35-16 W	o44
10/20				
10/27	at Washington	+1	15-18 L	u46
11/3	at Arizona			
11/10	New England			
11/17	Green Bay			
11/24	Minnesota			
12/1	at Detroit			
12/8	at San Francisco			
12/16	at Minnesota			
12/22	Detroit			
12/26	at Seattle			
1/5	at Green Bay			

Cincinnati (SU: 3-5, ATS: 4-4, O/U: 5-3)

Date	Opponent	Line	Score	ATS/O/U
9/8	New England	-7	10-16 L	u41
9/15	at Kansas City	-7	25-26 W	u47
9/23	Washington	-7	33-38 L	o45
9/29	at Carolina	-4	34-24 W	o48
10/6	Baltimore	+2	38-41 L	o46
10/13	at N.Y. Giants	-4	17-7 W	u46
10/20	at Cleveland	-5	21-14 W	u42
10/27	Philadelphia	-2	17-37 L	o47
11/3	at Vegas			
11/7	at Baltimore			
11/17	at L.A. Chargers			
11/24				
12/1	Pittsburgh			
12/9	at Dallas			
12/15	at Tennessee			
12/22	Cleveland			
12/29	Denver			
1/5	at Pittsburgh			

Cleveland (SU: 2-6, ATS: 3-5, O/U: 3-5)

Date	Opponent	Line	Score	ATS/O/U
9/8	Dallas	-2	17-33 L	o42
9/15	at Jacksonville	+3	18-13 W	u41
9/23	N.Y. Giants	-6	15-21 L	u38
9/29	at Las Vegas	-2	16-20 L	u37
10/6	at Washington	+3	13-34 L	o43
10/13	at Philadelphia	+8	16-20 W	u42
10/20	Cincinnati	+5	14-21 L	u44
10/27	Baltimore	+7	21-14 W	u42
11/3	L.A. Chargers			
11/10				
11/17	at New Orleans			
11/21	Pittsburgh			
12/2	at Denver			
12/8	at Pittsburgh			
12/15	Kansas City			
12/22	at Cincinnati			
12/29	Miami			
1/5	at Baltimore			

Dallas (SU: 3-4, ATS: 2-5, O/U: 5-2)

Date	Opponent	Line	Score	ATS/O/U
9/8	at Cleveland	+2	33-17 W	o42
9/15	New Orleans	-6	19-44 L	o47
9/22	Baltimore	+1	25-28 L	o47
9/26	at N.Y. Giants	-5	20-15 L	u45
10/6	at Pittsburgh	+2	20-17 W	u44
10/13	Detroit	+3	9-47 L	o53
10/20				
10/27	at San Francisco	+5	24-30 L	o47
11/3	at Atlanta			
11/10	Philadelphia			
11/18	Houston			
11/24	at Washington			
11/28	N.Y. Giants			
12/9	Cincinnati			
12/15	at Carolina			
12/22	Tampa Bay			
12/29	at Philadelphia			
1/5	Washington			

Denver (SU: 5-3, ATS: 6-2, O/U: 5-3)

Date	Opponent	Line	Score	ATS/O/U
9/8	at Seattle	+6	20-26 W	o42
9/15	Pittsburgh	+2	6-13 L	u36
9/22	at Tampa Bay	+6	26-7 W	u40
9/29	at N.Y. Giants	+8	10-9 W	u39
10/6	Las Vegas	-3	34-18 W	o36
10/13	L.A. Chargers	+3	16-23 L	o37
10/17	at New Orleans	-2	33-10 W	o37
10/27	Carolina	-13	28-14 W	o40
11/3	at Baltimore			
11/10	at Kansas City			
11/17	Atlanta			
11/24	at Las Vegas			
12/2	Cleveland			
12/8				
12/15	Indianapolis			
12/22	at L.A. Chargers			
12/29	at Cincinnati			
1/5	Kansas City			

Detroit (SU: 6-1, ATS: 6-1, O/U: 4-3)

Date	Opponent	Line	Score	ATS/O/U
9/8	L.A. Rams	-5	26-20 W	u54
9/15	Tampa Bay	-7	16-20 L	u51
9/22	at Arizona	-3	20-13 W	u51
10/6	Seattle	-4	42-29 W	o47
10/13	Dallas	-3	47-9 W	o53
10/20	at Minnesota	+1	31-29 W	o50
10/27	Tennessee	-12	52-14 W	o45
11/3	at Green Bay			
11/10	at Houston			
11/17	Jacksonville			
11/24	at Indianapolis			
11/28	Chicago			
12/5	Green Bay			
12/15	Buffalo			
12/22	at Chicago			
12/30	at San Francisco			
1/5	at Minnesota			

Green Bay (SU: 6-2, ATS: 4-4, O/U: 4-3-1)

Date	Opponent	Line	Score	ATS/O/U
9/6	at Philadelphia	+1	29-34 L	o49
9/15	Indianapolis	+2	16-10 W	u47
9/22	at Tennessee	+3	30-14 W	o41
9/29	at Minnesota	-2	29-31 L	o44
10/6	at L.A. Rams	-2	24-19 W	u47
10/13	Arizona	-5	34-13 W	o49
10/20	Houston	-3	24-22 L	u49
10/27	at Jacksonville	-3	30-27 L	o47
11/3	Detroit			
11/10				
11/17	at Chicago			
11/24	San Francisco			
11/28	Miami			
12/5	at Detroit			
12/15	at Seattle			
12/23	New Orleans			
12/29	at Minnesota			
1/5	Chicago			

Houston (SU: 6-2, ATS: 3-5, O/U: 2-6)

Date	Opponent	Line	Score	ATS/O/U
9/8	at Indianapolis	-3	29-27 L	o48
9/15	Chicago	-6	19-13 L	u45
9/22	at Minnesota	-1	7-34 L	u46
9/29	Jacksonville	-5	24-20 L	u44
10/6	Buffalo	+1	23-20 W	u48
10/13	at New England	-6	41-21 W	o39
10/20	at Green Bay	+3	22-24 W	o47
10/27	Indianapolis	-5	23-20 L	u45
11/3	at N.Y. Jets			
11/10	Detroit			
11/18	at Dallas			
11/24	at Tennessee			
12/1	at Jacksonville			
12/8				
12/15	Miami			
12/21	at Kansas City			
12/25	Baltimore			
1/5	at Tennessee			

Indianapolis (SU: 4-4, ATS: 7-1, O/U: 3-5)

Date	Opponent	Line	Score	ATS/O/U
9/8	Houston	+3	27-29 W	o48
9/15	at Green Bay	-2	10-16 L	u41
9/22	Chicago	-2	21-16 W	u43
9/29	Pittsburgh	+2	27-24 W	o41
10/6	at Jacksonville	+3	34-37 W	o45
10/13	at Tennessee	+2	20-17 W	u41
10/20	Miami	+3	16-10 W	u44
10/27	at Houston	+5	20-23 W	u45
11/3	at Minnesota			
11/10	Buffalo			
11/17	at N.Y. Jets			
11/24	Detroit			
12/1	at New England			
12/8				
12/15	at Denver			
12/22	at Tennessee			
12/29	at N.Y. Giants			
1/5	Jacksonville			

Jacksonville (SU: 2-6, ATS: 4-4, O/U: 5-3)

Date	Opponent	Line	Score	ATS/O/U
9/8	at Miami	+3	17-20 W	u49
9/15	Cleveland	+3	13-18 L	u41
9/23	at Buffalo	+4	0-47 L	o46
9				

2024 CFB Schedules with Logs

Air Force (SU: 1-6, ATS: 0-7, O/U: 3-4)

Date	Opponent	Line	Score	ATS/O/U
8/31	Merrimack	-30	21-6	L u47
9/7	San Jose State	-2	7-17	L u44
9/14	at Baylor	+17	3-31	L u40
9/21	at Wyoming	-4	19-31	L o33
10/5	Navy	+10	7-34	L o37
10/12	at New Mexico	+7	37-52	L o55
10/19	Colorado State	+6	13-21	L u43
10/26				
11/2	at Army			
11/9	Fresno State			
11/16	Oregon State			
11/23	at Nevada			
11/30	at San Diego State			

Akron (SU: 2-6, ATS: 3-5, O/U: 5-3)

Date	Opponent	Line	Score	ATS/O/U
8/31	at Ohio State	+49	6-52	W o56
9/7	at Rutgers	+24	17-49	L o41
9/14	Colgate	-14	31-20	L o48
9/21	at South Carolina	+24	7-50	L o41
9/28	at Ohio	+8	10-30	L u46
10/5	Bowling Green	+16	20-27	W u48
10/12	at Western Mich	+9	24-34	L o48
10/19				
10/26	Eastern Michigan	+2	25-21	W u50
11/2	Buffalo			
11/9				
11/13	at Northern Illinois			
11/19	at Kent State			
11/26	Toledo			

Alabama (SU: 6-2, ATS: 4-4, O/U: 5-3)

Date	Opponent	Line	Score	ATS/O/U
8/31	W Kentucky	-34	63-0	W o59
9/7	USF	-30	42-16	L u64
9/14	at Wisconsin	-14	42-10	W u47
9/21				
9/28	Georgia	+1	41-34	W o49
10/5	at Vanderbilt	-23	35-40	L o53
10/12	South Carolina	-21	27-25	L o50
10/19	at Tennessee	-3	17-24	L u57
10/26	Missouri	-16	34-0	W u51
11/2				
11/9	at LSU			
11/16	Mercer			
11/23	at Oklahoma			
11/30	Auburn			

Appalachian St (SU: 3-4, ATS: 2-4-1, O/U: 2-4-1)

Date	Opponent	Line	Score	ATS/O/U
8/31	E. Tennessee St	-32	38-10	L u59
9/7	at Clemson	+17	20-66	L o52
9/14	at East Carolina	-1	21-19	W u57
9/19	South Alabama	-8	14-48	L u62
9/28	Liberty	Cancelled		
10/5	at Marshall	+3	37-52	L o56
10/12	at UL-Lafayette	+10	24-34	W u64
10/19				
10/26	Georgia State	-7	33-26	P p59
11/2	Old Dominion			
11/7	at Coastal Carolina			
11/16				
11/23	James Madison			
11/30	at Georgia Southern			

Arizona (SU: 3-5, ATS: 1-7, O/U: 3-5)

Date	Opponent	Line	Score	ATS/O/U
8/31	New Mexico	-28	61-39	L o60
9/7	Northern Arizona	-37	22-10	L u64
9/13	at Kansas State	+7	7-31	L u61
9/21				
9/28	at Utah	+7	23-10	W u47
10/5	Texas Tech	-6	22-28	L u64
10/12	at BYU	+3	19-41	L o48
10/19	Colorado	-2	7-34	L u57
10/26	West Virginia	-5	26-31	L o51
11/2	at UCF			
11/9				
11/16	Houston			
11/23	at TCU			
11/30	Arizona State			

Arizona State (SU: 5-2, ATS: 5-2, O/U: 3-4)

Date	Opponent	Line	Score	ATS/O/U
8/31	Wyoming	-6	48-7	W o47
9/7	Mississippi State	-6	30-23	W u64
9/12	at Texas State	+2	31-28	W o58
9/21	at Texas Tech	+4	22-30	L u58
9/28				
10/5	Kansas	-2	35-31	W o50
10/12	Utah	+6	27-19	W u46
10/19	at Cincinnati	+5	14-24	L u51
10/26				
11/2	at Oklahoma State			
11/9	UCF			
11/16	at Kansas State			
11/23	BYU			
11/30	at Arizona			

Arkansas (SU: 5-3, ATS: 6-2, O/U: 4-4)

Date	Opponent	Line	Score	ATS/O/U
8/31	Arka Pine-Bluff	-50	70-0	W o60
9/7	at Okla St-2ot	+10	31-39	W o61
9/14	UAB	-23	37-27	L o61
9/21	at Auburn	+2	24-14	W u53
9/28	† Texas A&M	+6	17-21	W u50
10/5	Tennessee	+14	19-14	W u57
10/12				
10/19	LSU	+3	10-34	L u57
10/26	at Mississippi St	-7	58-25	W o55
11/2	Ole Miss			
11/9				
11/16	Texas			
11/23	Louisiana Tech			
11/30	at Missouri			

Arkansas State (SU: 5-3, ATS: 3-5, O/U: 4-4)

Date	Opponent	Line	Score	ATS/O/U
8/31	Central Arkansas	-12	34-31	L o60
9/7	Tulsa	-9	28-24	L u66
9/14	at Michigan	+21	18-28	W u47
9/21	at Iowa State	+20	7-52	L o52
9/28				
10/5	South Alabama	+2	18-16	W u62
10/12	at Texas State	+13	9-41	L u66
10/19	at Southern Miss	-7	44-28	W o56
10/26	Troy	-8	34-31	L o50
11/2				
11/9	at UL-Lafayette			
11/16	at Georgia State			
11/23	UL-Monroe			
11/30	Old Dominion			

Army (SU: 7-0, ATS: 6-1, O/U: 5-2)

Date	Opponent	Line	Score	ATS/O/U
8/30	Lafayette	-31	42-7	W o47
9/7	at Florida Atlantic	PK	24-7	W u41
9/14				
9/21	Rice	-7	37-14	W o43
9/28	at Temple	-11	42-14	W o46
10/5	at Tulsa	-14	49-7	W o50
10/12	UAB	-27	44-10	W o55
10/19	East Carolina	-17	45-28	L o54
10/26				
11/2	Air Force			
11/9	at North Texas			
11/16				
11/23	† Notre Dame			
11/30	UTSA			
12/7				
12/14	† Navy			

Auburn (SU: 3-5, ATS: 4-4, O/U: 3-5)

Date	Opponent	Line	Score	ATS/O/U
8/31	Alabama A&M	-48	73-3	W o59
9/7	California	-12	14-21	L u53
9/14	New Mexico	-24	45-19	W o58
9/21	Arkansas	-2	14-24	L u53
9/28	Oklahoma	-1	21-27	L o43
10/5	at Georgia	+21	13-31	W o50
10/12				
10/19	at Missouri	+3	17-21	L u49
10/26	at Kentucky	+2	24-10	W u43
11/2	Vanderbilt			
11/9				
11/16	UL-Monroe			
11/23	Texas A&M			
11/30	at Alabama			

Ball State (SU: 3-5, ATS: 5-3, O/U: 7-1)

Date	Opponent	Line	Score	ATS/O/U
8/31				
9/7	Missouri State	-3	42-34	W o51
9/14	at Miami (FL)	+37	0-62	L o56
9/21	at Central Mich	+6	34-37	L o50
9/28	at James Madison	+22	7-63	L o56
10/5	Western Michigan	+10	42-45	W o57
10/12	at Kent State	-3	37-35	L o58
10/19	at Vanderbilt	+27	14-24	W u58
10/26	Northern Illinois	+13	25-23	W o47
11/2				
11/5	Miami (OH)			
11/12	at Buffalo			
11/23	Bowling Green			
11/29	at Ohio			

Baylor (SU: 4-4, ATS: 5-3, O/U: 5-3)

Date	Opponent	Line	Score	ATS/O/U
8/31	Tarleton State	-35	45-3	W u54
9/7	at Utah	+15	12-23	W u54
9/14	Air Force	-17	31-3	W u50
9/21	at Colorado	+2	31-38	L o42
9/28	BYU	-3	28-34	L o44
10/5	at Iowa State	+13	21-43	L o46
10/12				
10/19	at Texas Tech	+4	59-35	W o56
10/26	Oklahoma State	-7	38-28	W o64
11/2	TCU			
11/9				
11/16	at West Virginia			
11/23	at Houston			
11/30	Kansas			

Boise State (SU: 6-1, ATS: 4-3, O/U: 5-2)

Date	Opponent	Line	Score	ATS/O/U
8/31	at Ga Southern	-13	56-45	L o57
9/7	at Oregon	+17	34-37	W o61
9/14				
9/21	Portland State	-42	56-14	L o69
9/28	Washington St	-6	45-24	W o66
10/5	Utah State	-28	62-30	W o66
10/12	at Hawaii	-21	28-7	L o60
10/19				
10/25	at UNLV	-4	29-24	W u64
11/1	San Diego State			
11/9	Nevada			
11/16	at San Jose State			
11/23	at Wyoming			
11/29	Oregon State			

Boston College (SU: 4-4, ATS: 4-4, O/U: 3-5)

Date	Opponent	Line	Score	ATS/O/U
9/2	at Florida State	+16	28-13	W u51
9/7	Duquesne	-35	56-0	W o54
9/14	at Missouri	+14	21-27	W u52
9/21	Michigan State	-4	23-19	L u48
9/28	Western Kentucky	-7	21-20	L u45
10/5	at Virginia	+2	14-24	L u52
10/12				
10/17	at Virginia Tech	+8	21-42	L o47
10/25	Louisville	+7	27-31	W o54
11/2				
11/9	Syracuse			
11/16	at SMU			
11/23	North Carolina			
11/30	Pittsburgh			

Bowling Green (SU: 4-4, ATS: 4-4, O/U: 3-5)

Date	Opponent	Line	Score	ATS/O/U
8/29	Fordham	-15	41-17	W u60
9/7	at Penn State	+34	27-34	W o51
9/14				
9/21	at Texas A&M	+20	20-26	W u50
9/28	Old Dominion	-11	27-30	L o51
10/5	at Akron	-16	27-20	L u48
10/12	Northern Illinois	-3	7-17	L u46
10/19	Kent State	+24	27-6	L u54
10/26	at Toledo	-2	41-26	W o48
11/2				
11/5	at Central Michigan			
11/12	Western Michigan			
11/23	at Ball State			
11/29	Miami (OH)			

Buffalo (SU: 4-4, ATS: 4-4, O/U: 4-3-1)

Date	Opponent	Line	Score	ATS/O/U
8/29	Lafayette	-3	30-13	W u46
9/7	at Missouri	+32	0-38	L u52
9/14	Massachusetts	-3	34-3	W u46
9/21	at No. Illinois-ot	+13	23-20	W p43
9/28	at Connecticut	+6	3-47	L o44
10/5				
10/12	Toledo	+10	30-15	W o49
10/19	Western Michigan	+1	41-48	L o44
10/26	at Ohio	+3	16-47	L o46
11/2	at Akron			
11/9				
11/12	Ball State			
11/20	at Eastern Michigan			
11/26	Kent State			

BYU (SU: 8-0, ATS: 7-1, O/U: 6-2)

Date	Opponent	Line	Score	ATS/O/U
8/31	Northern Illinois	-17	41-13	W u49
9/6	at SMU	+12	18-15	W o56
9/14	at Wyoming	-9	34-14	W o40
9/21	Kansas State	+7	38-9	W u50
9/28	at Baylor	+3	34-28	W o46
10/5				
10/12	Arizona	-3	41-19	W o48
10/19	Oklahoma State	-8	38-35	L o53
10/26	at UCF	+3	37-24	W o53
11/2				
11/9	at Utah			
11/16	Kansas			
11/2				

Georgia Southern (SU: 5-3, ATS: 5-2-1, O/U: 4-4)

Date	Opponent	Line	Score	ATS/O/U
8/31	Boise State	+13	45-56 W	o57
9/7	at Nevada	-1	20-17 W	u56
9/14	South Carolina St	-27	42-14 W	o54
9/21	at Ole Miss	+36	13-52 L	u68
9/28	at Georgia State	+3	38-21 W	o57
10/5				
10/12	Marshall	-1	24-23 P	u58
10/19	James Madison	+10	28-14 W	u58
10/24	at Old Dominion	-1	19-47 L	o52
11/2	at South Alabama			
11/9				
11/16	Troy			
11/23	at Coastal Carolina			
11/30	Appalachian State			

Georgia Tech (SU: 2-5, ATS: 1-5-1, O/U: 3-3-1)

Date	Opponent	Line	Score	ATS/O/U
8/31	at Georgia Tech	+20	12-35 L	u55
9/7	Chattanooga	-10	24-21 L	u52
9/14	Vanderbilt	+8	36-32 W	o45
9/21				
9/28	Georgia Southern	-3	21-38 L	o57
10/5				
10/12	Old Dominion	-3	14-21 L	u53
10/17	at Marshall	+9	20-35 L	o51
10/26	at Appalachian St	+7	26-33 P	p59
11/1	at Connecticut			
11/9	at James Madison			
11/16	Arkansas State			
11/23	at Texas State			
11/30	Coastal Carolina			

Georgia Tech (SU: 5-4, ATS: 3-4-1, O/U: 1-7)

Date	Opponent	Line	Score	ATS/O/U
8/24	Florida State	+10	24-21 W	u54
8/31	Georgia State	-20	35-12 W	u55
9/7	at Syracuse	-3	28-31 L	u60
9/14	VMI	-44	59-7 N/A	54
9/21	at Louisville	+9	19-31 L	u56
9/28				
10/5	Duke	-10	24-14 P	u53
10/12	at North Carolina	-3	41-34 W	o61
10/19	Notre Dame	+14	13-31 L	u49
10/26	at Virginia Tech	+11	6-21 L	u52
11/2				
11/9	Miami (FL)			
11/16				
11/21	NC State			
11/30	at Georgia			

Hawaii (SU: 3-5, ATS: 4-4, O/U: 2-6)

Date	Opponent	Line	Score	ATS/O/U
8/24	Delaware State	-40	35-14 W	u55
8/31	UCLA	+13	13-16 W	u52
9/7				
9/14	at Sam Houston St	+4	13-31 L	u48
9/21	Northern Iowa	-10	36-7 W	u46
9/28				
10/5	at San Diego St	+1	24-27 L	o47
10/12	Boise State	+21	7-28 W	u60
10/19	at Washington St	+18	10-42 L	u55
10/26	Nevada	-2	34-13 W	o42
11/2	at Fresno State			
11/9	UNLV			
11/16	at Utah State			
11/23				
11/30	New Mexico			

Houston (SU: 3-5, ATS: 4-4, O/U: 1-7)

Date	Opponent	Line	Score	ATS/O/U
8/31	UNLV	-3	7-27 L	u59
9/7	at Oklahoma	+27	12-16 W	u45
9/14	Rice	-4	33-7 W	u45
9/21	at Cincinnati	+4	0-34 L	u47
9/28	Iowa State	+16	0-20 L	u43
10/5	at TCU	+16	30-19 W	u52
10/12				
10/19	at Kansas	+4	14-42 L	o46
10/26	Utah	+4	17-14 W	u36
11/2	Kansas State			
11/9				
11/16	at Arizona			
11/23	Baylor			
11/30	at BYU			

Illinois (SU: 6-2, ATS: 5-2-1, O/U: 2-6)

Date	Opponent	Line	Score	ATS/O/U
8/29	Eastern Illinois	-28	45-0 W	u50
9/7	Kansas	+5	23-17 W	u58
9/14	Central Michigan	-21	30-9 P	u50
9/21	at Nebraska-ot	+9	31-24 W	o42
9/28	at Penn State	+19	7-21 W	u48
10/5				
10/12	Purdue-ot	-22	50-49 L	o47
10/19	Michigan	+5	21-7 W	u44
10/26	at Oregon	+22	9-38 L	u54
11/2	Minnesota			
11/9				
11/16	Michigan State			
11/23	at Rutgers			
11/30	at Northwestern			

Indiana (SU: 8-0, ATS: 7-1, O/U: 6-2)

Date	Opponent	Line	Score	ATS/O/U
8/31	FIU	-25	31-7 L	u51
9/6	Western Illinois	-45	77-3 W	o54
9/14	at UCLA	-3	42-13 W	o47
9/21	Charlotte	-28	52-14 W	o51
9/28	Maryland	-7	42-28 W	o50
10/5	at Northwestern	-13	41-24 W	o40
10/12				
10/19	Nebraska	-6	56-7 W	o48
10/26	Washington	-5	31-17 W	u54
11/2	at Michigan State			
11/9	Michigan			
11/16				
11/23	at Ohio State			
11/30	Purdue			

Iowa (SU: 5-3, ATS: 4-4, O/U: 7-1)

Date	Opponent	Line	Score	ATS/O/U
8/31	Illinois State	-21	40-0 W	o37
9/7	Iowa State	-3	19-20 L	o36
9/14	Troy	-23	38-21 L	o39
9/21	at Minnesota	-2	31-14 W	o35
9/28				
10/5	at Ohio State	+17	7-35 L	u46
10/12	Washington	-3	40-16 W	o41
10/19	at Michigan St	-6	20-32 L	o39
10/26	Northwestern	-16	40-14 W	o38
11/2	Wisconsin			
11/8	at UCLA			
11/16				
11/23	at Maryland			
11/29	Nebraska			

Iowa State (SU: 7-0, ATS: 5-2, O/U: 4-3)

Date	Opponent	Line	Score	ATS/O/U
8/31	North Dakota	-30	21-3 L	u52
9/7	at Iowa	+3	20-19 W	o36
9/14				
9/21	Arkansas State	-20	52-7 W	o52
9/28	at Houston	-16	20-0 W	u43
10/5	Baylor	-13	43-21 W	o44
10/12	at West Virginia	-3	28-16 W	u54
10/19	UCF	-13	38-35 L	o49
10/26				
11/2	Texas Tech			
11/9	at Kansas			
11/16	Cincinnati			
11/23	at Utah			
11/30	Kansas State			

Jacksonville St (SU: 4-3, ATS: 4-3, O/U: 5-2)

Date	Opponent	Line	Score	ATS/O/U
8/31	Coastal Carolina	-3	27-55 L	o54
9/7	at Louisville	+29	14-49 L	o56
9/14	at Eastern Mich-2ot	-2	34-37 L	o54
9/21	Southern Miss	-6	44-7 W	u59
9/28				
10/4	at Kennesaw St	-17	63-24 W	o49
10/9	New Mexico St	-21	54-13 W	o58
10/19				
10/23	Middle Tennessee	-20	42-20 W	u64
10/30	at Liberty			
11/9	at Louisiana Tech			
11/16	FIU			
11/23	Sam Houston State			
11/30	at Western Kentucky			

James Madison (SU: 6-2, ATS: 4-4, O/U: 2-6)

Date	Opponent	Line	Score	ATS/O/U
8/31	at Charlotte	-6	30-7 W	u48
9/7	Gardner-Webb	-36	13-6 L	u51
9/14				
9/21	at North Carolina	+11	70-50 W	o48
9/28	Ball State	-22	63-7 W	o56
10/5	at UL-Monroe	-16	19-21 L	u48
10/10	Coastal Carolina	-7	39-7 W	u59
10/19	at Ga Southern	-10	14-28 L	u58
10/26	Southern Miss	-24	32-15 L	u54
11/2				
11/9	Georgia State			
11/16	at Old Dominion			
11/23	at Appalachian State			
11/30	Marshall			

Kansas (SU: 2-6, ATS: 2-6, O/U: 4-4)

Date	Opponent	Line	Score	ATS/O/U
8/29	Lindenwood	-48	48-3 L	u63
9/7	at Illinois	-5	17-23 L	u58
9/13	UNLV	-9	20-23 L	u57
9/21	at West Virginia	+1	28-32 L	o55
9/28	TCU	-1	27-38 L	o59
10/5	at Arizona State	+2	31-35 L	o50
10/12				
10/19	Houston	-4	42-14 W	o46
10/26	at Kansas State	+10	27-29 W	u56
11/2				
11/9	Iowa State			
11/16	at BYU			
11/23	Colorado			
11/30	at Baylor			

Kansas State (SU: 7-1, ATS: 3-5, O/U: 4-4)

Date	Opponent	Line	Score	ATS/O/U
8/31	UT-Martin	-37	41-6 L	u56
9/7	at Tulane	-8	34-27 L	o47
9/13	Arizona	-7	31-7 W	u61
9/21	at BYU	-7	9-38 L	u50
9/28	Oklahoma State	-6	42-20 W	o58
10/5				
10/12	at Colorado	-3	31-28 L	o55
10/19	at West Virginia	-2	45-18 W	o56
10/26	Kansas	-10	29-27 L	u56
11/2	at Houston			
11/9				
11/16	Arizona State			
11/23	Cincinnati			
11/30	at Iowa State			

Kennesaw State (SU: 1-6, ATS: 2-5, O/U: 2-5)

Date	Opponent	Line	Score	ATS/O/U
8/31	at UTSA	+23	16-28 W	u48
9/7	UL-Lafayette	+14	10-34 L	u46
9/14	at San Jose State	+17	10-31 L	u42
9/21				
9/28	UT-Martin	+1	13-24 L	u45
10/4	Jacksonville St	+17	24-63 L	o49
10/12				
10/15	at Middle Tenn	+8	5-14 L	u49
10/23	Liberty	+27	27-24 W	o48
10/30	at Western Kentucky			
11/9	at UTEP			
11/16	Sam Houston State			
11/23	FIU			
11/30	at Louisiana Tech			

Kent State (SU: 0-8, ATS: 2-6, O/U: 5-3)

Date	Opponent	Line	Score	ATS/O/U
8/31	at Pittsburgh	+23	24-55 L	o55
9/7	St. Francis (PA)	-17	17-23 L	u50
9/14	at Tennessee	+49	0-71 L	o62
9/21	at Penn State	+49	0-56 L	o58
9/28	Eastern Michigan	+14	33-52 L	o45
10/5				
10/12	Ball State	+3	35-37 W	o58
10/19	at Bowling Green	+24	6-27 W	u54
10/26	at Western Mich	+19	21-52 L	o61
11/2				
11/8	Ohio			
11/13	at Miami (OH)			
11/19	Akron			
11/30	at Buffalo			

Kentucky (SU: 3-5, ATS: 3-4, O/U: 2-5)

Date	Opponent	Line	Score	ATS/O/U
8/31	Southern Miss	-25	31-0 N/A	50
9/7	South Carolina	-9	6-31 L	u41
9/14	Georgia	+21	12-13 W	u45
9/21	Ohio	-21	41-6 W	o41
9/28	at Ole Miss	+15	20-17 W	u51
10/5				
10/12	Vanderbilt	-12	13-20 L	u44
10/19	at Akron	-2	20-48 L	u42
10/26	Auburn	-2	10-24 L	u43
11/2	at Tennessee			
11/9				
11/16	Murray State			
11/23	at Texas			
11/30	Louisville			

Liberty (SU: 5-1, ATS: 1-5, O/U: 3-2-1)

Date	Opponent	Line	Score	ATS/O/U
8/31	Campbell	-40	41-24 L	o60
9/7	at New Mex St	-22	30-24 L	p54
9/14	UTEP	-24	28-10 L	u54
9/21	East Carolina	-7	35-24 W	o55
9/28	at Appalachian St	Cancelled		
10/5				
10/8	FIU-ot	-16	31-24 L	u55
10/19				
10/23	at Kennesaw St	-27	24-27 L	o48
10/30	Jacksonville State			
11/9	at Middle Tennessee			
11/16	at Massachusetts			
11/23	Western Kentucky			
11/29				

Nevada (SU: 3-6, ATS: 5-3-1, O/U: 5-4)

Table with columns: Date, Opponent, Line Score, ATS/O/U. Rows include SMU, Troy, Georgia Southern, Minnesota, Eastern Wash, San Jose State, Oregon State, Fresno State, Hawaii, Colorado State, Boise State, Air Force, UNLV.

New Mexico (SU: 3-5, ATS: 5-3, O/U: 6-2)

Table with columns: Date, Opponent, Line Score, ATS/O/U. Rows include Montana State, Arizona, Auburn, Fresno State, New Mexico St, Air Force, Utah State, Colorado St, Wyoming, San Diego State, Washington State, Hawaii.

New Mexico St (SU: 2-5, ATS: 2-5, O/U: 4-2)

Table with columns: Date, Opponent, Line Score, ATS/O/U. Rows include SE Missouri St, Liberty, Fresno State, Sam Houston St, New Mexico, Jacksonville St, Louisiana Tech, FIU, Western Kentucky, Texas A&M, Middle Tennessee, UTEP.

North Carolina (SU: 4-4, ATS: 1-6-1, O/U: 3-5)

Table with columns: Date, Opponent, Line Score, ATS/O/U. Rows include Minnesota, Charlotte, NC Central, James Madison, Duke, Pittsburgh, Georgia Tech, Virginia, Florida State, Wake Forest, Boston College, NC State.

North Texas (SU: 5-3, ATS: 4-4, O/U: 7-1)

Table with columns: Date, Opponent, Line Score, ATS/O/U. Rows include South Alabama, Stephen F. Austin, Texas Tech, Wyoming, Florida Atlantic, Memphis, Tulane, Army, UTSA, East Carolina, Temple.

Northern Illinois (SU: 4-4, ATS: 3-3-2, O/U: 3-4-1)

Table with columns: Date, Opponent, Line Score, ATS/O/U. Rows include Western Illinois, Notre Dame, Buffalo-ot, NC State, Massachusetts, Bowling Green, Toledo, Ball State, Western Michigan, Akron, Miami (OH), Central Michigan.

Northwestern (SU: 3-5, ATS: 2-6, O/U: 4-3-1)

Table with columns: Date, Opponent, Line Score, ATS/O/U. Rows include Miami (OH), Duke-ot, Eastern Illinois, Washington, Indiana, Maryland, Wisconsin, Iowa, Purdue, Ohio State, Michigan, Illinois.

Notre Dame (SU: 7-1, ATS: 6-2, O/U: 4-4)

Table with columns: Date, Opponent, Line Score, ATS/O/U. Rows include Texas A&M, Northern Illinois, Purdue, Miami (OH), Louisville, Stanford, Navy, Georgia Tech, Florida State, Army, Virginia, USC.

Ohio (SU: 5-3, ATS: 4-4, O/U: 5-3)

Table with columns: Date, Opponent, Line Score, ATS/O/U. Rows include Syracuse, South Alabama, Morgan State, Kentucky, Akron, Central Mich, Miami (OH), Buffalo, Kent State, Eastern Michigan, Toledo, Ball State.

Ohio State (SU: 6-1, ATS: 3-4, O/U: 4-3)

Table with columns: Date, Opponent, Line Score, ATS/O/U. Rows include Akron, Western Michigan, Marshall, Michigan St, Iowa, Oregon, Nebraska, Penn State, Purdue, Northwestern, Indiana, Michigan.

Oklahoma (SU: 4-4, ATS: 4-4, O/U: 3-5)

Table with columns: Date, Opponent, Line Score, ATS/O/U. Rows include Temple, Houston, Tulane, Tennessee, Auburn, Texas, South Carolina, Ole Miss, Maine, Missouri, Alabama, LSU.

Oklahoma State (SU: 3-5, ATS: 3-5, O/U: 5-3)

Table with columns: Date, Opponent, Line Score, ATS/O/U. Rows include South Dakota St, Arkansas-2ot, Tulsa, Utah, Kansas State, West Virginia, BYU, Baylor, Arizona State, TCU, Texas Tech, Colorado.

Old Dominion (SU: 4-4, ATS: 5-3, O/U: 4-4)

Table with columns: Date, Opponent, Line Score, ATS/O/U. Rows include South Carolina, East Carolina, Virginia Tech, Bowling Green, Coastal Carolina, Georgia State, Texas State, Georgia Southern, Appalachian State, James Madison, Marshall, Arkansas State.

Ole Miss (SU: 6-2, ATS: 5-3, O/U: 1-7)

Table with columns: Date, Opponent, Line Score, ATS/O/U. Rows include Furman, Middle Tennessee, Wake Forest, Georgia Southern, Kentucky, South Carolina, LSU-ot, Oklahoma, Arkansas, Georgia, Florida, Mississippi State.

Oregon (SU: 8-0, ATS: 4-4, O/U: 3-5)

Table with columns: Date, Opponent, Line Score, ATS/O/U. Rows include Idaho, Boise State, Oregon State, UCLA, Michigan State, Ohio State, Purdue, Illinois, Michigan, Maryland, Wisconsin, Washington.

Oregon State (SU: 4-4, ATS: 2-6, O/U: 3-4-1)

Table with columns: Date, Opponent, Line Score, ATS/O/U. Rows include Idaho State, San Diego St, Oregon, Purdue, Colorado St-2ot, Nevada, UNLV, California, San Jose State, Air Force, Washington State, Boise State.

Penn State (SU: 7-0, ATS: 3-4, O/U: 2-5)

Table with columns: Date, Opponent, Line Score, ATS/O/U. Rows include West Virginia, Bowling Green, Kent State, Illinois, UCLA, USC-ot, Wisconsin, Washington, Purdue, Minnesota, Maryland.

Pittsburgh (SU: 7-0, ATS: 6-1, O/U: 3-4)

Table with columns: Date, Opponent, Line Score, ATS/O/U. Rows include Kent State, Cincinnati, West Virginia, Youngstown St, North Carolina, California, Syracuse, SMU, Virginia, Clemson, Louisville, Boston College.

Purdue (SU: 1-6, ATS: 2-5, O/U: 4-3)

Table with columns: Date, Opponent, Line Score, ATS/O/U. Rows include Indiana State, Notre Dame, Oregon State, Nebraska, Wisconsin, Illinois-ot, Oregon, Northwestern, Ohio State, Penn State, Michigan State, Indiana.

Rice (SU: 2-6, ATS: 3-4-1, O/U: 3-5)

Table with columns: Date, Opponent, Line Score, ATS/O/U. Rows include Sam Houston St, Texas Southern, Houston, Army, Charlotte, UTSA, Tulane, Connecticut, Navy, Memphis, UAB, USF.

Rutgers (SU: 4-4, ATS: 3-4-1, O/U: 5-3)

Table with columns: Date, Opponent, Line Score, ATS/O/U. Rows include Howard, Akron, Virginia Tech, Washington, Nebraska, Wisconsin, UCLA, Minnesota, Maryland, Illinois, Michigan State.

Sam Houston St (SU: 6-2, ATS: 5-3, O/U: 3-5)

Table with columns: Date, Opponent, Line Score, ATS/O/U. Rows include Rice, UCF, Hawaii, New Mexico St, Texas State, UTEP, Western Kentucky, FIU, Louisiana Tech, Kennesaw State, Jacksonville State, Liberty.

San Diego State (SU: 3-4, ATS: 4-3, O/U: 3-4)

Table with columns: Date, Opponent, Line Score, ATS/O/U. Rows include Texas A&M Com-33, Oregon State, California, Central Mich, Hawaii, Wyoming, Washington St, Boise State, New Mexico, UNLV, Utah State, Air Force.

San Jose State (SU: 5-3, ATS: 4-4, O/U: 3-4-1)

Table with columns: Date, Opponent, Line Score, ATS/O/U. Rows include Sacramento St, Air Force, Kennesaw State, Wash St-2ot, Nevada, Colorado St, Wyoming, Fresno State, Oregon State, Boise State, UNLV, Stanford.

SMU (SU: 7-1, ATS: 5-3, O/U: 5-3)

Table with columns: Date, Opponent, Line Score, ATS/O/U. Rows include Nevada, Houston Christian, BYU, TCU, Florida State, Louisville, Stanford, Duke-ot, Pittsburgh, Boston College, Virginia, California.

South Alabama (SU: 4-4, ATS: 3-4, O/U: 3-4)

Table with columns: Date, Opponent, Line Score, ATS/O/U. Rows include North Texas, Ohio, Northwestern St, Appalachian St, LSU, Arkansas St, Troy, UL-Monroe, Georgia Southern, UL-Lafayette, Southern Miss, Texas State.

South Carolina (SU: 4-3, ATS: 5-2, O/U: 4-3)

Table with columns: Date, Opponent, Line Score, ATS/O/U. Rows include Old Dominion, Kentucky, LSU, Akron, Ole Miss, Alabama, Oklahoma, Texas A&M, Vanderbilt, Missouri, Wofford, Clemson.

Southern Miss (SU: 1-7, ATS: 3-4, O/U: 3-4)

Table with columns: Date, Opponent, Line Score, ATS/O/U. Rows include Kentucky, Louisiana State, SE Louisiana, Jacksonville St, Ole Miss, UL-Lafayette, UL-Monroe, Arkansas State, James Madison, Marshall, Texas State, South Alabama, Troy.

Stanford (SU: 2-6, ATS: 2-5-1, O/U: 2-6)

Table with columns: Date, Opponent, Line Score, ATS/O/U. Rows include TCU, Cal Poly, Syracuse, Clemson, Virginia Tech, Notre Dame, SMU, Wake Forest, NC State, Louisville, California, San Jose State.

Syracuse (SU: 5-2, ATS: 3-4, O/U: 2-5)

Table with columns: Date, Opponent, Line Score, ATS/O/U. Rows include Ohio, Georgia Tech, Stanford, Holy Cross, UNLV-ot, NC State, Pittsburgh, Virginia Tech, Boston College, California, Connecticut, Miami (FL).

TCU (SU: 5-3, ATS: 5-2, O/U: 5-3)

Table with columns: Date, Opponent, Line Score, ATS/O/U. Rows include Stanford, LIU, UCF, SMU, Kansas, Houston, Utah, Texas Tech, Baylor, Oklahoma State, Arizona, Cincinnati.

Temple (SU: 2-6, ATS: 4-4, O/U: 4-4)

Table with columns: Date, Opponent, Line Score, ATS/O/U. Rows include Oklahoma, Navy, Coastal Carolina, Utah State, Army, Connecticut, Tulsa, East Carolina, Tulane, Florida Atlantic, UTSA, North Texas.

Tennessee (SU: 6-1, ATS: 5-2, O/U: 3-4)

Table with columns: Date, Opponent, Line Score, ATS/O/U. Rows include Chattanooga, NC State, Kent State, Oklahoma, Arkansas, Florida-ot, Alabama, Kentucky, Mississippi State, Georgia, UTEP, Vanderbilt.

Texas (SU: 1-1, ATS: 5-3, O/U: 3-4-1)

Table with columns: Date, Opponent, Line Score, ATS/O/U. Rows include Colorado State, Michigan, UTSA, UL-Monroe, Mississippi State, Oklahoma, Georgia, Vanderbilt, Florida, Arkansas, Kentucky, Texas A&M.

Texas A&M (SU: 7-1, ATS: 3-5, O/U: 5-3)

Table with columns: Date, Opponent, Line Score, ATS/O/U. Rows include Notre Dame, McNeese State, Florida, Bowling Green, Arkansas, Missouri, Mississippi St, LSU, South Carolina, New Mexico State, Auburn, Texas.

Texas State (SU: 4-3, ATS: 3-4, O/U: 3-3-1)

Date	Opponent	Line	Score	ATS/O/U
8/31	Lamar	-33'	34-27 L	p61
9/7	UTSA	-2'	49-10 W	o58'
9/12	Arizona State	-2'	28-31 L	o58
9/21				
9/28	† Sam Houston St	-10'	39-40 L	o55'
10/3	at Troy	-14	38-17 W	u65
10/12	Arkansas State	-13'	41-9 W	u66
10/19	at Old Dominion	-10'	14-24 L	u60
10/26				
10/29	UL-Lafayette			
11/9	at UL-Monroe			
11/16	Southern Miss			
11/23	Georgia State			
11/29	at South Alabama			

Texas Tech (SU: 5-3, ATS: 4-3-1, O/U: 5-3-1)

Date	Opponent	Line	Score	ATS/O/U
8/31	Ablene Christ-ot	-31'	52-51 L	o57'
9/7	at Washington St	-2'	16-37 L	u65
9/14	North Texas	-11	66-21 W	o70
9/21	Arizona State	-4'	30-22 W	u58
9/28	Cincinnati	-3	44-41 P	o64
10/5	at Arizona	+6	28-22 W	u60
10/12				
10/19	Baylor	-4'	35-59 L	o56
10/26	at TCU	+4'	34-35 W	o66
11/2	at Iowa State			
11/9	Colorado			
11/16				
11/23	at Oklahoma State			
11/30	West Virginia			

Toledo (SU: 5-3, ATS: 4-4, O/U: 6-2-1)

Date	Opponent	Line	Score	ATS/O/U
8/29	Duquesne	-28	49-10 W	o53
9/7	Massachusetts	-17'	38-23 L	o51'
9/14	at Mississippi St	+10'	41-17 W	o57
9/21	at W. Kentucky	-1'	21-26 L	u60
9/28				
10/5	Miami (OH)	-4'	30-20 W	o44
10/12	at Buffalo	-10'	15-30 L	o44
10/19	at Northern Illinois	+3	13-6 W	u42
10/26	Bowling Green	-2	26-41 L	o48
11/2	at Eastern Michigan			
11/9				
11/12	Central Michigan			
11/20	Ohio			
11/26	at Akron			

Troy (SU: 1-7, ATS: 3-5, O/U: 3-5-1)

Date	Opponent	Line	Score	ATS/O/U
8/31	Nevada	-7'	26-28 L	o44'
9/7	at Memphis	+18'	17-38 L	u56
9/14	at Iowa	+23'	21-38 W	o39
9/21	Florida A&M	-21'	34-12 W	u49
9/28	UL-Monroe	-6'	9-13 L	u46
10/3	Texas State	+14	17-38 L	u55'
10/12				
10/15	at South Alabama	+10	9-25 L	u53'
10/26	at Arkansas State	+8	31-34 W	o50
11/2	Coastal Carolina			
11/9				
11/16	at Georgia Southern			
11/23	at UL-Lafayette			
11/30	Southern Miss			

Tulane (SU: 6-2, ATS: 6-2, O/U: 5-3-1)

Date	Opponent	Line	Score	ATS/O/U
8/29	SE Louisiana	-28	52-0 W	u55'
9/7	Kansas State	+8'	27-34 W	u49
9/14	at Oklahoma	+12'	19-34 L	o47
9/21	at UL-Lafayette	-1'	41-33 W	o53
9/28	USF	-4	45-10 W	u60
10/5	at UAB	-19'	71-20 W	o52
10/12				
10/19	Rice	-22'	24-10 L	u53'
10/26	at North Texas	-7'	45-37 W	o70
10/31	at Charlotte			
11/9	Temple			
11/16	at Navy			
11/23				
11/28	Memphis			

Tulsa (SU: 3-5, ATS: 3-5, O/U: 4-4-1)

Date	Opponent	Line	Score	ATS/O/U
8/29	Northwestern St	-37'	62-28 L	o55'
9/7	at Arkansas State	+9	24-28 W	u66
9/14	Oklahoma State	+17'	10-45 L	u63
9/21	at La Tech-ot	+3	23-20 W	u57
9/28	at North Texas	+7	20-52 L	o65'
10/5	Army	+14	7-49 L	o50
10/12				
10/19	at Temple	+3	10-20 L	u51'
10/26	UTSA	+9'	46-45 W	o52'
11/2	at UAB			
11/9				
11/14	East Carolina			
11/23	at USF			
11/30	Florida Atlantic			

UAB (SU: 1-6, ATS: 3-4, O/U: 4-3-1)

Date	Opponent	Line	Score	ATS/O/U
8/29	Alcorn State	-29'	41-3 W	u56
9/7	at UL-Monroe	-11	6-32 L	u55
9/14	at Arkansas	+23	27-37 W	o61
9/21				
9/28	Navy	+4'	18-41 L	o56'
10/5	Tulane	+19'	20-71 L	o52
10/12	at Army	+27	10-44 L	u55'
10/19	at USF	+14	25-35 W	o55
10/26				
11/2	Tulsa			
11/9	Connecticut			
11/16	at Memphis			
11/23	Rice			
11/30	at Charlotte			

UCF (SU: 3-5, ATS: 4-4, O/U: 6-2-1)

Date	Opponent	Line	Score	ATS/O/U
8/29	New Hampshire	-38	57-3 W	o58'
9/7	Sam Houston St	-21'	45-14 W	o54
9/14	at TCU	+2'	35-34 W	o61'
9/21				
9/28	Colorado	-13	21-48 L	o61
10/5	at Florida	-1	13-24 L	u62
10/12	Cincinnati	-2	13-19 L	u58
10/19	at Iowa State	+13'	35-38 W	o49
10/26	BYU	-3	24-37 L	o53'
11/2	Arizona			
11/9	at Arizona State			
11/16				
11/23	at West Virginia			
11/29	Utah			

UCLA (SU: 2-5, ATS: 4-3, O/U: 2-5-1)

Date	Opponent	Line	Score	ATS/O/U
8/31	at Hawaii	-13'	16-13 L	u52
9/7				
9/14	Indiana	+3'	13-42 L	o47
9/21	at LSU	+21'	17-34 W	u56'
9/28	Oregon	+23'	13-24 W	u54
10/5	at Penn State	+30	11-27 W	u48
10/12	Minnesota	+3'	17-21 L	u39
10/19	at Rutgers	+4	35-32 W	o42
10/26				
11/2	at Nebraska			
11/8	Iowa			
11/15	at Washington			
11/23	USC			
11/30	Fresno State			

UL-Lafayette (SU: 6-1, ATS: 3-4, O/U: 3-4-1)

Date	Opponent	Line	Score	ATS/O/U
8/31	Grambling State	-36	40-10 L	u58'
9/7	at Kennesaw St	-14'	34-10 W	u46
9/14				
9/21	Tulane	+1'	33-41 L	o53
9/28	at Wake Forest	+3	41-38 W	o60
10/5	at Southern Miss	-17	23-13 L	u57
10/12	Appalachian St	-10'	34-24 L	u64
10/19	at Coastal Carolina	-6'	34-24 W	o57
10/26				
10/29	at Texas State			
11/9	Arkansas State			
11/16	South Alabama			
11/23	Troy			
11/30	at UL-Monroe			

UL-Monroe (SU: 5-2, ATS: 5-2, O/U: 3-4-1)

Date	Opponent	Line	Score	ATS/O/U
8/29	Jackson State	-4'	30-14 W	u45'
9/7	UAB	+11	32-6 W	u55
9/14				
9/21	at Texas	+42	3-51 L	o53'
9/28	at Troy	+6'	13-9 W	u46
10/5	James Madison	+16	21-19 W	u48
10/12	Southern Miss	-4'	38-21 W	o41
10/19				
10/26	at South Alabama	+7	17-46 L	o45
11/2	at Marshall			
11/9	Texas State			
11/16	at Auburn			
11/23	at Arkansas State			
11/30	UL-Lafayette			

UNLV (SU: 6-2, ATS: 5-3, O/U: 4-4-1)

Date	Opponent	Line	Score	ATS/O/U
8/31	at Houston	+3'	27-7 W	u55'
9/7	Utah Tech	-41	72-14 W	o57'
9/13	at Kansas	+9	23-20 W	u55'
9/21				
9/28	Fresno State	-2'	59-14 W	o51
10/5	Syracuse-ot	-5'	41-44 L	o56
10/12	at Utah State	-19	50-34 L	o67
10/19	at Oregon State	-6'	33-25 W	u61
10/25	Boise State	+4	24-29 W	u64
11/2				
11/9	at Hawaii			
11/16	San Diego State			
11/22	at San Jose State			
11/30	Nevada			

USC (SU: 4-4, ATS: 3-3, O/U: 4-3-1)

Date	Opponent	Line	Score	ATS/O/U
9/1	† LSU	+4	27-20 W	u66'
9/7	Utah State	-31	48-0 W	u64'
9/14				
9/21	at Michigan	-4	24-27 L	o44
9/28	Wisconsin	-14	38-21 W	o50'
10/5	at Minnesota	-8'	17-24 L	u45'
10/12	Penn State-ot	+3'	30-33 W	o51'
10/19	at Maryland	-7'	28-29 L	p57
10/25	Rutgers	-14	42-20 W	o57
11/2	at Washington			
11/9				
11/16	Nebraska			
11/23	at UCLA			
11/30	Notre Dame			

USF (SU: 3-4, ATS: 3-4, O/U: 2-4-1)

Date	Opponent	Line	Score	ATS/O/U
8/31	Bethune-Cook	-43'	48-3 W	u59'
9/7	at Alabama	+30'	16-42 W	o64
9/14	at Southern Miss	-13'	49-24 W	u58
9/21	Miami (FL)	+16'	15-50 L	p65
9/28	at Tulane	+4	10-45 L	o60
10/5				
10/11	Memphis	+10	3-21 L	u61
10/19	UAB	-14	35-25 L	o55
10/26				
11/1	at Florida Atlantic			
11/9	Navy			
11/16	at Charlotte			
11/23	Tulsa			
11/30	at Rice			

Utah (SU: 4-4, ATS: 2-6, O/U: 1-7-1)

Date	Opponent	Line	Score	ATS/O/U
8/29	Southern Utah	-37'	49-0 W	u55
9/7	Baylor	-15	23-12 L	u54
9/14	at Utah State	-20	38-21 L	o43'
9/21	at Oklahoma St	PK	22-19 W	u53
9/28	Arizona	-7'	10-23 L	u47
10/5				
10/12	at Arizona State	-6	19-27 L	u46'
10/19	TCU	-3	7-13 L	u52
10/26	at Houston	-4'	14-17 L	u36
11/2				
11/9	BYU			
11/16	at Colorado			
11/23	Iowa State			
11/29	at UCF			

Utah State (SU: 2-6, ATS: 2-6, O/U: 5-3-1)

Date	Opponent	Line	Score	ATS/O/U
8/31	Robert Morris	-35	36-14 L	u59
9/7	at USC	+31	0-48 L	u64
9/14	Utah	+20	21-38 W	o43'
9/21	at Temple	-6'	29-45 L	o53'
9/28				
10/5	at Boise State	+28	30-62 L	o66
10/11	UNLV	+19	34-50 W	o67'
10/19	New Mexico	+1	45-50 W	o78'
10/26	at Wyoming	-2'	27-25 L	u56'
11/2				
11/9	at Washington State			
11/16	Hawaii			
11/23	San Diego State			
11/29	at Colorado State			

UTEP (SU: 1-7, ATS: 3-5, O/U: 3-5-1)

Date	Opponent	Line	Score	ATS/O/U
8/31	at Nebraska	+27'	7-40 L	u48'
9/7	Southern Utah-ot	-6'	24-27 L	u56
9/14	at Liberty	+24	10-28 W	u57'
9/21	at Colorado St	+9	17-27 L	u49
9/28				
10/3	Sam Houston St	+10	21-41 L	o49
10/10	at W. Kentucky	+19'	17-44 L	o56
10/16	FIU	-7	30-21 W	o47
10/22	at Louisiana Tech	+6'	10-14 W	u49
11/2	Middle Tennessee			
11/9	Kennesaw State			
11/16				
11/23	at Tennessee			
11/30	at New Mexico State			

BP SPORTS 2024 FOOTBALL PACKAGES

order online at bradpowerssports.com

Item:	Regular:	Sale:
Weekly Newsletter (Emailed Wednesdays)	\$50	\$30
CFB/NFL VIP Service	\$749	\$349

Should I sign up for the Newsletter or VIP?

	NL	VIP
Bet less than 10 games each week	✓	
\$100 or less per bet	✓	
Can only bet on Gamedays	✓	
One Update Sent Each Week	✓	
Bet more than 10 games each week		✓
\$250 or more per bet		✓
Can bet early in the week		✓
Daily updates via Email/Text		✓