



A New
Style
of Quality



Inspired

RiverRun Cabinetry is located in the beautiful Shenandoah Valley of Virginia, where majestic mountains and rolling hills are joined by hardwood stands and new growth forests. Where the light dances creating a unique sense of harmony. Where a lattice of rivers and streams enrich and inspire and an appreciation for quality runs deep. In the valley, major thoroughfares mingle with country roads delivering the efficiencies of the day while preserving nature's magnificent beauty. This has been the inspiration for RiverRun Cabinetry.

Our mission is to deliver a naturally beautiful, fully featured line of cabinets where the quality reflects nature's finest, where traditional craftsmanship and modern efficiencies come together harmoniously to create beauty and quality in a line of cabinetry that offers the very best value possible.



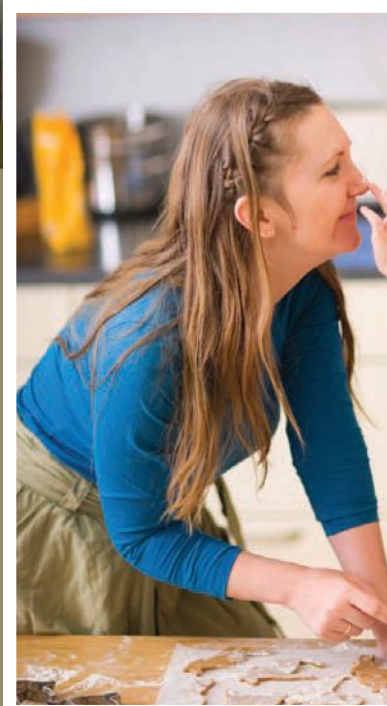


Where *Beauty*, *Style*, and *Quality* meet.

DALTON SABLE



Express your passion for cuisine, relax with a cup of tea, host a cookie baking party or just enjoy preparing the evening meals. The refined and sleek lines of Dalton Sable cabinetry pair with contemporary or transitional styling. Add appliances, workstation fixtures, and organizational accessories to make it all so easy and efficient.



Create a look uniquely you

Cabinet Accents

- Arched or Beckony Valance
- Angled or Straight Fluted Spacer
- Ornate or Plain Corbel
- Tulip or Bun Feet



*Beauty, form, and
function entwine*

*Expression
Suggestion*



*No matter the square footage or
the architectural requirements, we
all want our space, to which we
return, to be warm, relaxing, and
filled with the personal touches that
make it our home.*

Bring focus to the heart of your kitchen
with a Dalton Sable Range Hood.

Item# RH36CTARCH



BRIDGEWATER

WARM CHERRY



Your days are busy with appointments, meetings, life's events. But it's when you come home that you settle in and really enjoy the moments in the welcoming space you call home. Bridgewater's elegant detailing and handsome rich finish create a charming backdrop for your own time and space or family gatherings and welcoming guests.



Bringing quality and style together

Decorative Accents

- Large Crown Mouldings
- Royal Crown Mouldings
- Standard Crown Mouldings
- Traditional Rail Mouldings
- Dentil Accents
- Rope Accents



*Expression
Suggestion*

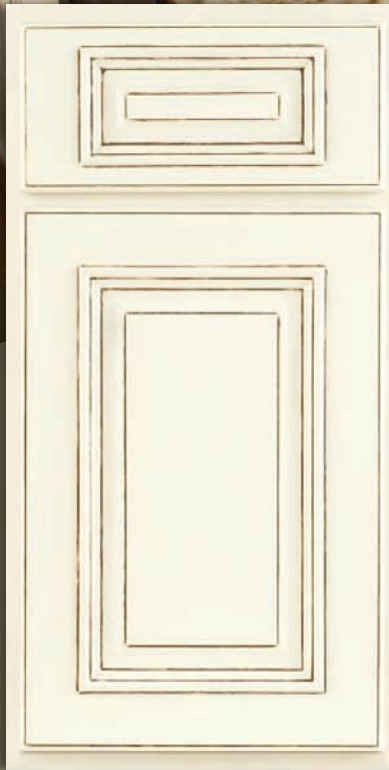


Decorate with Bridg-
water Corbels.
Item# LCOR14

There's nothing like the deep, rich color of cherry to help create a haven of relaxation and comfort.

HAMPTON

LINEN GLAZED



Your style – comfortable yet sophisticated. Your kitchen, a place where friends and family gather. Rich with voices, cooking, creativity, and the rhythm of daily living. Hampton's linen glaze, soft white finish evokes the feeling of a French Country Kitchen.



Express your flair

Enhancing additions

- Fluted or Plain Pilaster
- Block and Spindle
- Mullion Doors



*A place for everything.
Hidden roll-outs
organize and add to
the easy feel of your
Hampton kitchen.*



*Expression
Suggestion*

Try Hampton with a
decorative knob accent from
Richelieu Hardware.
Visit richelieu.com

LENOX

CAFÉ GLAZED



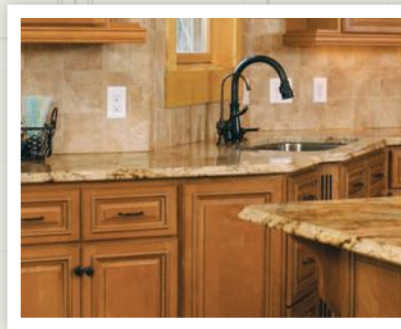
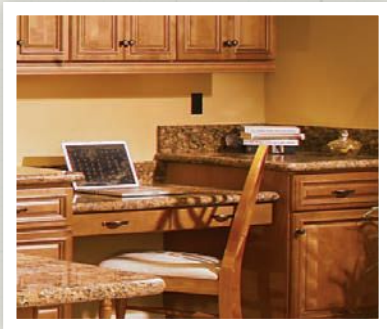
Your kitchen is the heart of your home and a place to create and celebrate your love for food, where everyone gathers, connects, and shares the experience. Lenox Café Glazed is hand finished creating a naturally authentic and varied look reflecting the ambiance of activity. Its soft highlights add to what makes life so rich.



Organize your world

Orderly Advantages

- Cutlery Tray
- Base or Wall Pull Out Spacer
- Base Organizer Pull Out
- Spice Organizer
- Waste Container
- Pantry Pull Out



Savvy cooks know how to turn simple ingredients into works of art. Of course, it helps when you create from a workspace that truly inspires.



*Expression
Suggestion*

Add an artisan accent with pewter finished knobs from Richelieu Hardware.
Visit richelieu.com

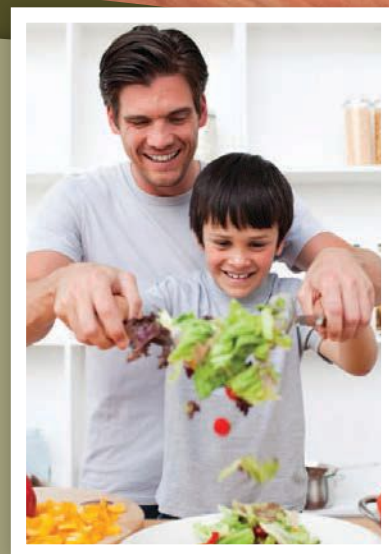
Mt. VERNON

SNOW



Realize your vision.

Tap your sense of style and enthusiasm for form and function. Mt. Vernon's warm white cabinetry with clean, simple detailing brings a genuine spirit of openness and energy that pairs with subtle or more ornate accents. It can hold the stage or set it – cultivating interaction.



Make it easy, convenient, in harmony

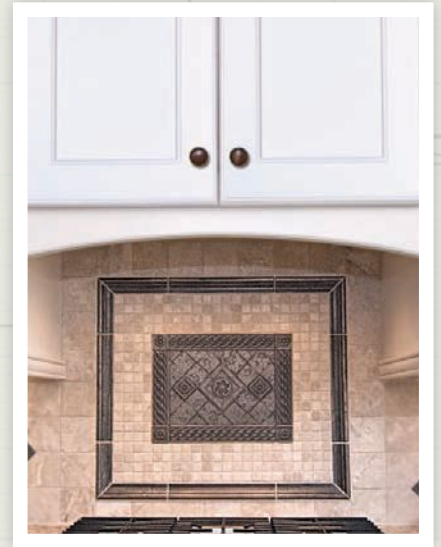
Space Maximizers

- Lazy Susan
- Tilt Out Tray
- Under Sink Drip Tray



*Everything in its place. Store it, display
it or keep it handy within arms reach.*

Create a built-in serving station.



Expression Suggestion

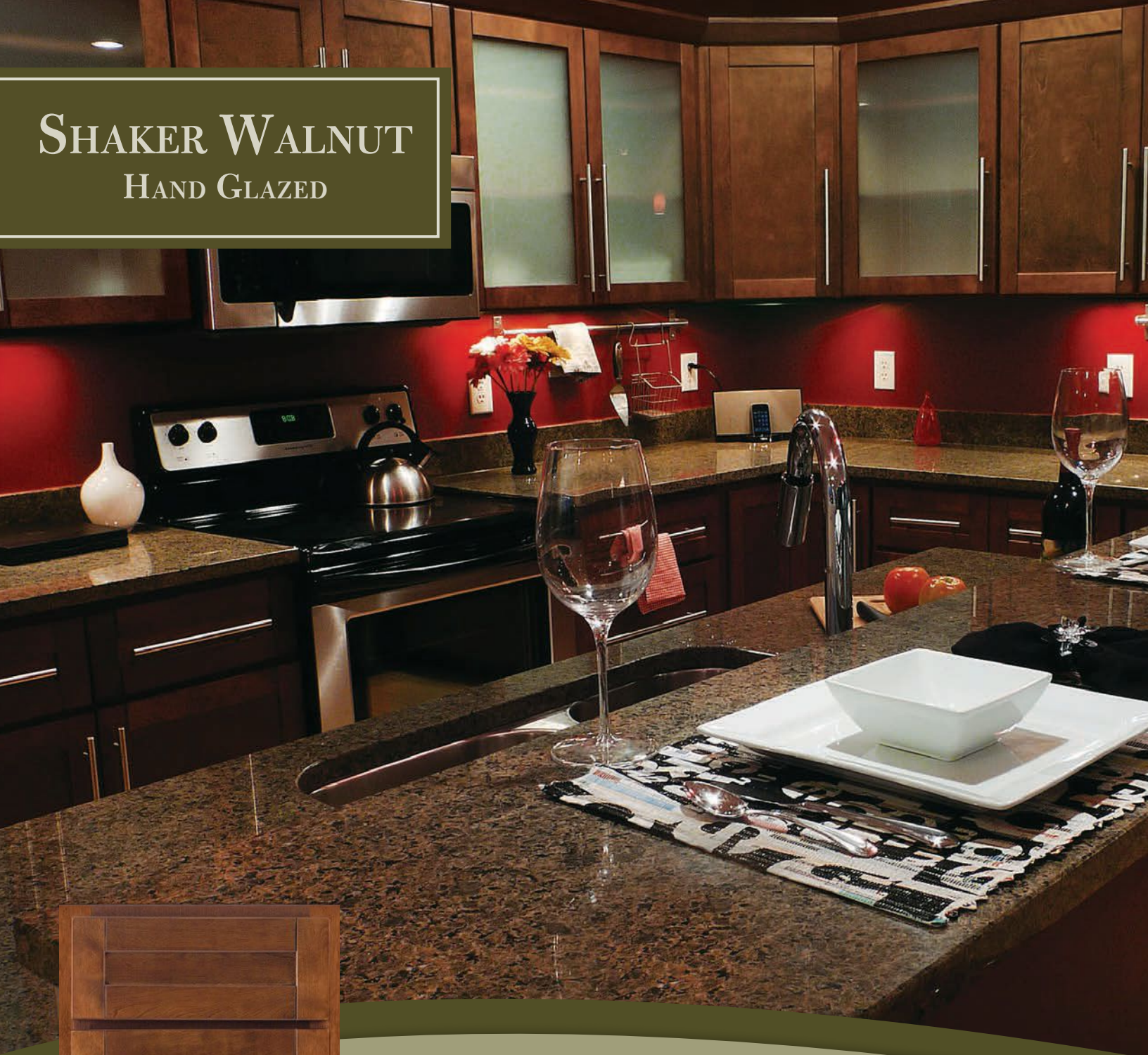


Add a flair for the gourmet with single or double
row Wine Cubbies. They can be installed
vertically or horizontally.

Item# WC130

SHAKER WALNUT

HAND GLAZED



Enjoy the simple pleasures, laugh, entertain friends, and gather the family. Focus on what really matters. There is rhythm and purpose to your work and play. Classic Shaker Walnut Hand Glazed cabinetry reflects the detailed attention you pay to friends, family, and all of life's everyday events. Versatile and contemporary, reflecting clean lines and focused ideals.

Customize your workspace

Workspace Activators

- Arched, Straight Contemporary or Standard Range Hood
- Microwave Wall Cabinet
- Pull Out or Rounded Shelves
- Wine Cubby
- Appliance Garage



Efficiencies, such as one space with many features, become essential. Include a food prep station, pastry counter, refreshment center or wine bar.



Expression Suggestion

Inspiration comes from many places. Spice it up with a handy pull out sectional.

Item# 432WF-3C-RR



Quality

What makes your RiverRun cabinetry such an outstanding investment? Our relentless commitment to creating a naturally beautiful, fully featured line of cabinets and an approach that combines traditional construction and hand finishing techniques with the efficiencies of contemporary production. RiverRun is where beauty, style, and quality meet to provide the best cabinet for the very best value.

Only premium materials are used in the creation of RiverRun cabinetry. They are crafted using time honored woodworking methods. Every door, face frame, drawer head, and virtually every piece of the cabinet is inspected by our experienced Quality Control team.

Warranty – Our Ten Year Limited Warranty

We guarantee your RiverRun cabinetry and ensure that all component parts and hardware are free from defects in material and workmanship under normal use to the original owner for 10 years.

Construction

RiverRun Cabinetry's Standard Construction offers many features which are considered upgrades in other lines of cabinetry: all wood construction; finished plywood sides; plywood shelves; solid wood, dovetail drawers; real birch-veneered interiors; full extension, soft close drawer glides; solid birch, full overlay glazed doors; and five-piece drawer heads. All this complete with a gorgeous Valspar finish.

Finish

We use deep, luxurious, and durable Valspar finishes. Our handsome glazes add a rich patina, enhancing the door's details. Our finish has anti-yellowing properties, keeping the finish crisp for years to come.

Selection

RiverRun Cabinetry has carefully selected our offering to inspire... from the traditionalists to the contemporary to the avant-garde.

Standard Construction



RiverRun Cabinetry's Standard Construction offers many features which are considered upgrades in other lines of cabinetry.

CASE

- ① Traditional face frame construction using select birch. Face frames are solid $\frac{3}{4}$ " thick with 1- $\frac{1}{2}$ " stiles and rails. Mortise and tenon joints.
- ② Sides are birch veneered $\frac{1}{2}$ " plywood. The interior features a clear-coat finish and the exterior is stained to match the door. (Hampton and Mt. Vernon interiors are painted to match the door.)
- ③ Shelves are $\frac{5}{8}$ " thick birch veneered plywood sealed with a clear-coat finish, adjustable and front edge banded.
- ④ For ease of installation, backs are framed with a $\frac{3}{8}$ " plywood hanging rail. Base cabinet backs extend to the floor providing optimal structural stability.

DRAWERS

- ⑤ $\frac{9}{16}$ " thick solid hard wood, dovetail joints and clear-coated. Bottoms are $\frac{1}{4}$ " birch plywood fully captured. Slides are under mount, full extension soft-close.

DOORS

- ⑥ Premium full overlay door styles. Butt doors on all sizes up to 39" wide.

HINGES

- ⑦ Hinges are 6-way adjustable.

Roll Trays

- ⑧ Optional roll trays. All wood dovetail construction.

Finishes

1) RAW MATERIAL SELECTION

We use only premium grade wood in the making of our cabinetry.

2) PREPARATORY SANDING

All of our cabinetry is assured to have the best possible surface for receiving our finish material through a two step sanding process.

3) CLEANING

Each piece of wood is then thoroughly cleaned after sanding to maintain a consistent and uniform surface for the final beauty of your cabinetry.

4) STAINING

The first coat of finish evens the tone variations of the wood for a more harmonious finished product. The process used is a fine mist that is environmentally friendly by minimizing emissions.

5) WASH COAT

Next, a wash coat is applied to seal the first application of finish and add to the visual depth of the stain.

6) DRYING

To set the initial finish applications.

7) HAND SANDING

This step assures a smooth, level surface to receive the final stain processes.



BRIDGEWATER



DALTON SABLE



HAMPTON

15 Step Process

8) WIPING STAIN

Final stain coat is applied and hand rubbed to enhance the wood grain's definition.

9) DRYING

To set the final finish application.

10) SEALANT

Sealant is then applied to assure a smooth surface texture for the top coat.

11) DRYING

To set the sealant application.

12) SANDING

Every door is then sanded again to remove any raised graining.

13) GLAZING

Our glazes add a rich patina and enhance your door's details. Depending on the technique required to achieve our handsome looks, the glaze is either detailed or hand wiped on the door to emphasize your door's character.

14) TOP COAT

This step assures the beauty of your cabinetry for years to come. Our top coat provides not only durable protection for your cabinetry's finish but also has anti-yellowing properties to keep your finish crisp.

15) FINAL INSPECTION

All of our products must pass final inspection for color consistency and quality before leaving the finish area.



LENOX



MT. VERNON



SHAKER

Accessories

Decorative Options

MOULDING



LARGE CROWN MOULDING
BCM8



ROYAL CROWN MOULDING (RCM4S)
paired with DENTIL MOULDING (DMTIS)



BASE MOULDING (BM),
ROYAL CROWN MOULDING (RCM4S),
AND ROPE MOULDING (RPI5)



SHAKER CROWN MOULDING
SCM



TRADITIONAL LIGHT
RAIL MOULDING
LRM8

VALANCES



ARCHED VALANCE
V31E
V37E
V43E



BECKONY VALANCE
V31D
V37D
V43D

CORBELS



MCOR10
UNGLAZED



LARGE CORBEL
LCOR14
UNGLAZED



PLAIN CORBEL
PLCOR 10.5

TULIP & BUN FEET



BUNFOOT



TULIPFOOT

MULLION DOORS



MULLION DOOR
MD

RiverRun Cabinetry offers you a full complement of accessories to create the simple and dramatic details which showcase your individual style.

Mullion Doors
Selection of Crown Mouldings
Pilasters & Blocks
Tulip & Bun Feet

Rope & Dentil Moulding
Light Rail Moulding
Roll Trays
Angle Bases

End Cabinets
Wine Racks
Wall Organizers
Wood Hoods

Simple & Dramatic Detailing

Workspace Options

MICROWAVE WALL CABINET



MWS3018X12
18"H X 12"
Note: Shelf is 17" deep

PULL OUT SHELF TRAY

ROT B15	ROT B27
ROT B18	ROT B30
ROT B21	ROT B33
ROT B24	ROT B36



RANGE HOODS



30" RANGE HOOD
RH3024



CONTEMPORARY STRAIGHT HOOD
36" RH36CTSTR
42" RH42CTSTR
48" RH48CTSTR



CONTEMPORARY ARCHED HOOD
36" RH36CTARCH
42" RH42CTARCH
48" RH48CTARCH

CONTEMPORARY CHIMNEY
(not pictured)
36" RH36CTCHIM
42" RH42CTCHIM
48" RH48CTCHIM

SHELVES

30" and 42" X 12"D
1/4 ROUND SHELVES
30" Shelves-WQR630
42" Shelves-WQR642



WINE RACKS

12" DEEP
WINE CUBBIES
WC130
Can be Installed Vertically or Horizontally



12" DEEP WALL
WINE RACKS
WR3018
(horizontal installation)
WR8130
(vertical installation)
Note: Holds 18 to 20 bottles

To see our complete line of accessories visit online at www.riverruncabinetry.com
or call 540.438.5973 and request our accessories catalog.

Accessories

Organizing Options

TRIMMABLE WOOD CUTLERY TRAYS



14 5/8"W X 22"D Wood
Cutlery Tray
4WCT-1
20 5/8"W X 22"D 4WCT-3

SPICE ORGANIZER INSERT



16"W X 19 3/4"D
SPICE ORGANIZER
4SDI-18
22"W X 19 3/4"D
SPICE ORGANIZER
4SDI-24



LAZY SUSANS

20" FULL CIRCLE - 2 Tray Set
3072-20-11-52
20" FULL CIRCLE - 3 Tray Set - 33" 41"
3073-20-11-531
20" FULL CIRCLE - 3 Tray Set - 38" 46"
3073-20-11-536

PULL OUT ORGANIZERS



3" WALL FILLER 30"H
432-WF-3C-RR
3" WALL FILLER 36"H
432-WF36-3C-RR
3" WALL FILLER 42"H
432-WF42-3C-RR

PULL OUT ORGANIZERS



BASE ORGANIZER
5" Tray Divider
447-BC-5C
Fits in B9 Cabinet

PULL OUT WASTE CONTAINER



SINGLE 35 QT
WASTE CONTAINER
4WCTM-12DM1-21
White Container Fits in
Base 15



DOUBLE 35 QT
WASTE CONTAINER
4WCTM-18DM2-18
White Container Fits in
Base 18



PANTRY PULL OUT

43"H X 14"W WOOD PANTRY
W/SLIDE
448-TP43-14-1
Fits in 18" Pantry Cabinet.
Has the Following Features:
• 450 lb rated soft close slide
• Adjustable shelves
• Limited Lifetime Warranty

U SHAPED TRAY DIVIDER



12" CHROME TRAY DIVIDER
LD-597-12CR-10
18" CHROME TRAY DIVIDER
LD-597-18CR-10
Can be Used in Wall or Base
Cabinets

WHITE POLYMER TILT OUT TRAY



11" TILT OUT TRAY KIT WHITE
LD-6572-11-11-1
14" TILT OUT TRAY KIT WHITE
LD-6572-14-11-1

Where Beauty, Style, and Quality Meet.

RiverRun Cabinetry can help bring the natural harmony of family, friends, and inspired living to your home.



Connect with RiverRun Cabinetry On:



Quality *Beautifully* Inspired.



Photography by Greg Versen

 **RiverRun**[™]
C A B I N E T R Y

riverruncabinetry.com