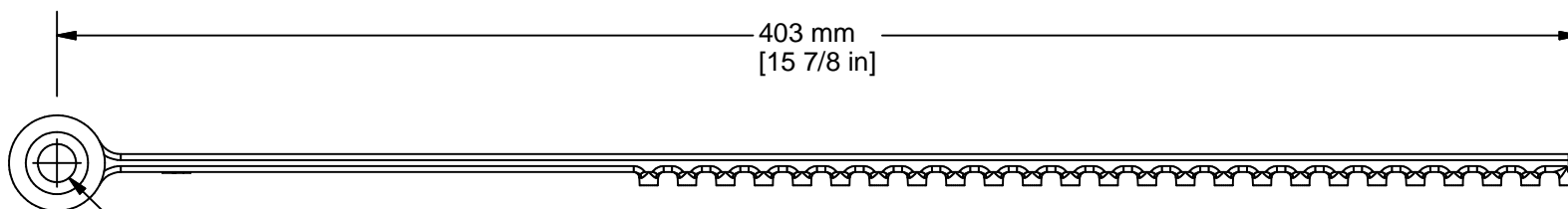
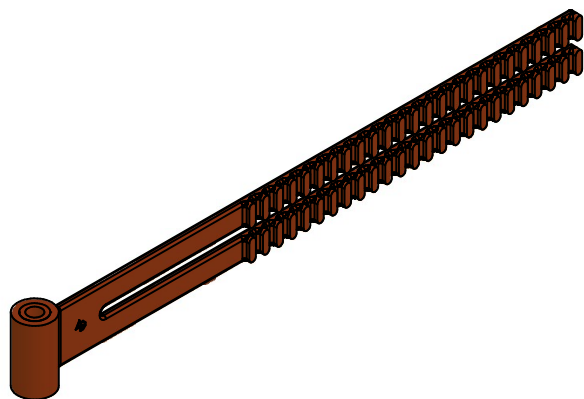


2

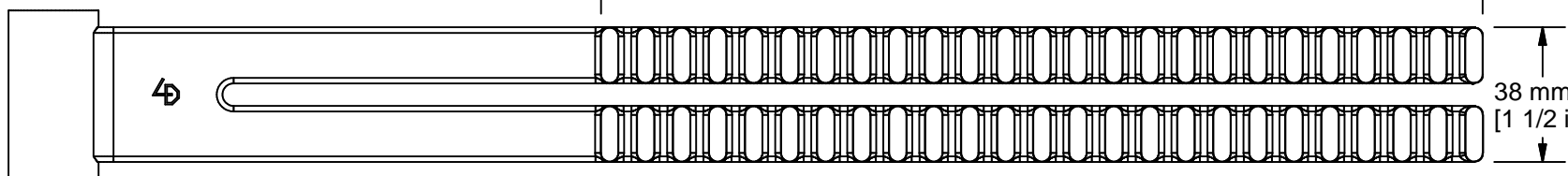
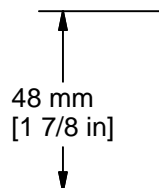
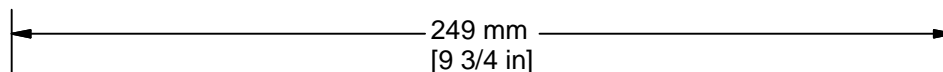
1

B

B



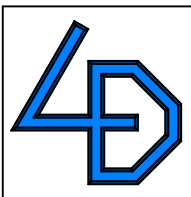
Molded in Acetal Bushing
Fits 3/8" or 10mm Rods



General Tolerances:
 x.x - +/- 1/32
 x.xx - +/- 0.010
 x.xxx - +/- 0.005
 x.xxxx - +/- 0.0005

A

A



LORNIC DESIGN INCORPORATED

12613 JAMES STREET, SUITE 10
 HOLLAND, MICHIGAN 49424
 PHONE: 616-594-0355 FAX 616-582-5908

THIS DRAWING INCLUDING ALL DESIGNS AND INFORMATION CONTAINED OR IMPLIED IS CONFIDENTIAL AND THE PROPERTY OF LORNIC DESIGN INCORPORATED. IT MAY NOT BE USED OR REPRODUCED IN ANY MANNER WITHOUT THE WRITTEN PERMISSION OF LORNIC DESIGN INCORPORATED AND IT MUST BE RETURNED UPON REQUEST (c) 2004

RELEASE DATE: 2/14/2017 RELEASED BY: NRH

Lornic Design
 PW 200
 Sales Drawing

FILE: PW 200 Sales.idw SIZE: A
 SHEET: 1 of 1 PW 200 Assy.iam

2

1

