

NORTH AMERICAN



Llama and Alpaca Show

November 4-6, 2016

Sale and Futurity November 5

Kentucky Expo Center

Louisville, Kentucky



ALL ★ AMERICAN
LLAMA FUTURITY
★★★★★





Breeding generations of beautiful offspring



Welcome to the 2016 North American Llama & Alpaca Show

The 25th Anniversary of the North American Llama & Alpaca Show kicks off two weeks of National level livestock shows held at the North American International Livestock Exposition (NAILE) in Louisville, KY during the first two weeks of November each year. This year's llama show runs November 4-6, 2016 and will showcase two NEW events including the "BELLES OF LOUISVILLE" SALE and the "ALL AMERICAN" FUTURITY. Returning this year will be the ILR-SD Eastern Championship Show which makes this show a triple point Halter Show with double points for the Performance and Fleece Shows. This year's ILR-SD Halter judges will be Hank Kauffman, OH and Margaret Henry, TX with Performance Judge, Mike Haumschild, OH and Fleece and Alpaca Judge Deb Yeagle lining up the entries. The Futurity classes will range in age from 5 months to 24 months with judges Mary Jo Miller, KY, Cathie Kindler, GA and Tor Sorensen, MO sorting through the "crème of the crop". The Sale will feature 15 llamas sold under the gavel of Darrell Anderson and will include show winning yearling females, future herd sire prospects along with Dam and cria pairs with next year's show winner at side. Once again the North American Llama Show will be the premier llama event in the Southeast. Glad you could join us for this historic event!

Show and Sale Personnel

Harvey Pool	Superintendent and Sale Manager
Lisa Pool	Asst. Superintendent
Vera Crump	Asst. Superintendent
Darrell Anderson	Auctioneer
Justin Timm	Online Auctioneer
Robin Korenke	Obstacles
Al Korenke	Obstacles
Jean Haumschild	Show Clerk
Sandy Auld	Show Clerk
Elaine Painter	Show Vet
Steve Auld	Announcer
Bill Safreed	Announcer
Dana Bush	Ribbons
Stephen Bush	Ribbons
Andrew Evans	Gate Keeper
Lauri Jones	Gate Keeper
Larry Miller	Ring Steward

Schedule of Events

Friday, November 4

All Day	Arrival and Stalling of animals
2:00 PM	Fleece-On judging begins beside office
5:00 PM	Picnic Dinner at office
5:30 PM	Exhibitor meeting at Show ring
6:00 PM	Preview of Sale animals
New time 7:00 PM	Showmanship – beginning with Sub Jr.

Saturday, November 5

8:00 AM	Performance classes begin with Alpaca Obstacle in Ring A
	Halter classes begin with Non – Breeder in Ring B
	Alpaca halter classes following Llama halter classes in Ring B
	Belles and Beaus of Louisville Llama Sale in Champions Hall
	Internet bidding is available through Justin Timm Auction Service
	Phone bidding is available by contacting Darrell Anderson at 765-427-8551
	Online bidding is available at www.justintimmauctionservice.com
	All American Llama Futurity classes begin with S1 – Suri males

NEW

NEW

Sunday, November 6

8:00 AM	Continue Performance Classes in Ring A
	Continue Halter Classes showing Lt, Med, Heavy and group classes
2:00 PM	Best of Show Selection

All llamas must depart the premises on Sunday.

Sponsors

\$500

Hard Rock Llama Co.
The LFA
LotsALocks
Spittin Creek Farm
Round Hill Farm Alpacas

\$300

CriVen Llamas

\$100

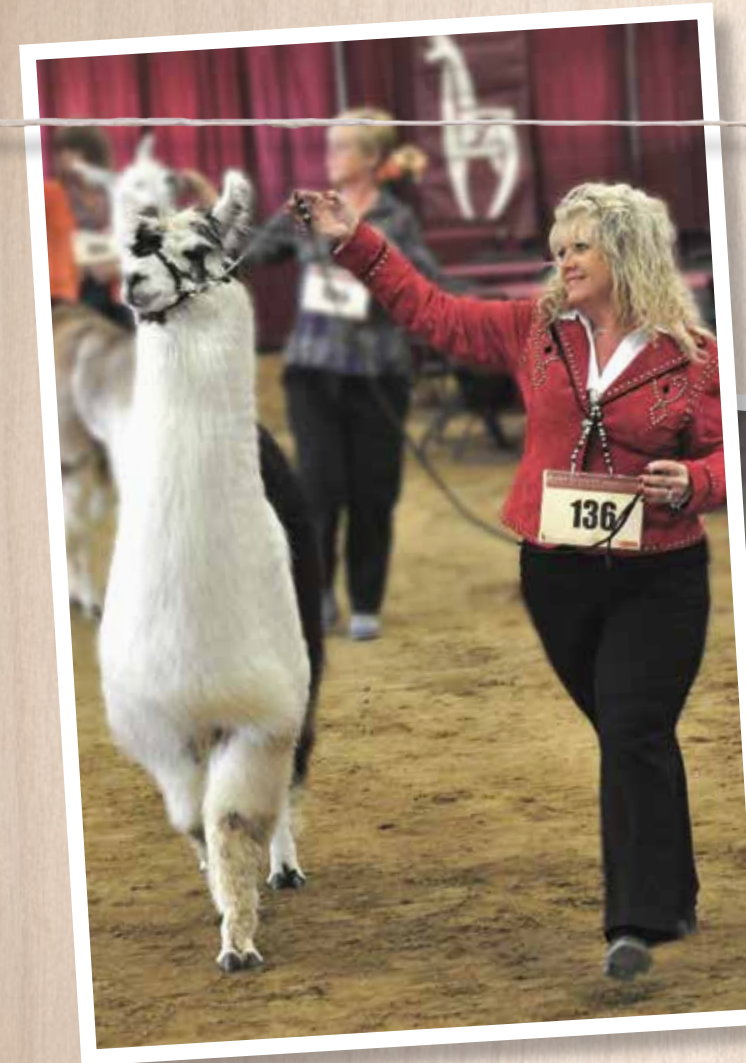
Lash Unique Animals
Ollendick Farms

\$50

Chip-N-Seal Farms
Animal Acres Llamas
NeedMor Acres
Brooks Creek Llamas
Alive N Fuzzy Alpaca Farm

\$35

Deb and Char Arendas



A LEGACY BORN OF LOVE.

Since 1995, Spittin' Creek has been building a long line of high-quality, award winning pedigrees. Today, the tradition continues. Loved like family, our llamas are gentle, well trained and eager to please.

Call us today to inquire about purchasing opportunities.

- Greg & Debbie Shellabarger



North American Show Judges



HANK KAUFFMAN

Hank and his wife, Connie, live in Martinsburg, Ohio. They raised llamas and alpacas for over 30 years, showing them for 20 years. They founded and were superintendents for the Hartford Fair Llama Show and were llama 4-H club advisors for 9 years. Hank has been a frequent speaker at conferences and a writer for industry magazines. A charter member of the Ohio River Valley llama Association, Hank served on the ORVLA Board of Directors six consecutive years, serving two of those as president. He is a former member of the ILA Research Committee, the Lama Medical Research Group, and served two terms as president of the Alpaca & Llama Show Association (ALSA). He conceived and developed the ALSA Regional and Grand National championship show programs, chaired the ALSA Grand National Committee and was the superintendent of the ALSA Grand National for the first four years. Hank has been an ALSA judge for 27 years and is an ALSA Judges' Clinic instructor.



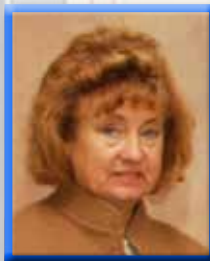
MARGARET HENRY

Margaret Henry is from Brockton, TX, which is located 110 miles north of Dallas. An animal lover since birth, she has been involved with llamas since 1993 when she met her first llama. It was love at first sight ...she bought him on the spot. She has been a certified ALSA judge since 2003 and an ILR-SD judge. She and her husband Jay have always been involved in livestock, having raised registered quarter horses, purebred dogs and longhorn cattle. She and her husband live at Henry Hill with an array of critters that call the farm home.



MIKE HAUMSCHILD

Mike Haumschild and wife Jean reside on a third generation farm in Warsaw, OH where they raise beef cattle and llamas. Mike purchased their first llamas in 1990, and since that time the entire family has been involved in showing. Mike worked several years in Florida as a parks and recreation director before moving to Ohio and becoming a teacher for thirty-two years. Mike is a 22-year advisor for a llama 4-H club and serves as a member of the auction and 4-H Advisory committees within the county. He was also a contributing author for the Ohio State 4-H Llama and Alpaca Resource and Record Books now used throughout Ohio and other states with llama and alpaca 4-H projects. Mike is an ALSA and ILR-SD judge in halter, youth and performance. He was the Buckeye Regional Show Superintendent for several years and enjoys meeting new llama exhibitors as well as seeing old friends in the llama community.



DEB YEAGLE

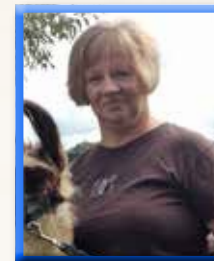
Deb Yeagle is a retired school teacher, ALSA and ILR Llama Halter, Fleece, Youth, Performance and Alpaca judge, and AALSA instructor. Deb raised llamas for 23 years, adding alpacas in the last 12, plus Jacob Sheep, Shetland Sheep, Merino and Teeswater sheep, cattle, pigs, dogs, chickens and much more. She and her husband, Don, have 6 children, 3 dogs, and were 4H leaders for 12 years. Deb is President of Black Swamp Spinners Guild, works with a Garden Club, and is part-time educational director for the African Safari Wildlife Park in Port Clinton Ohio. She is a member of ILR, ALSA, MLA, HLLA, LFA, Retired Teachers Association, English Shepherd Association and Argentine Llama Assoc.

Futurity Judges



CATHIE KINDLER

Cathie is a retired teacher who is living on her dream farm in the mountains of northern Georgia. She has been judging llamas for over 22 years and has judged shows from Maine to California, Minnesota to Texas and Florida and British Columbia. She is a member of the ILR, ILR-SD, ALSA, LFA, PLTA, and the SSLA, where she is the past president. She currently superintends 3 shows in Georgia and helps with several others. It is an honor and a pleasure to be judging the LFA this year.



MARY JO MILLER

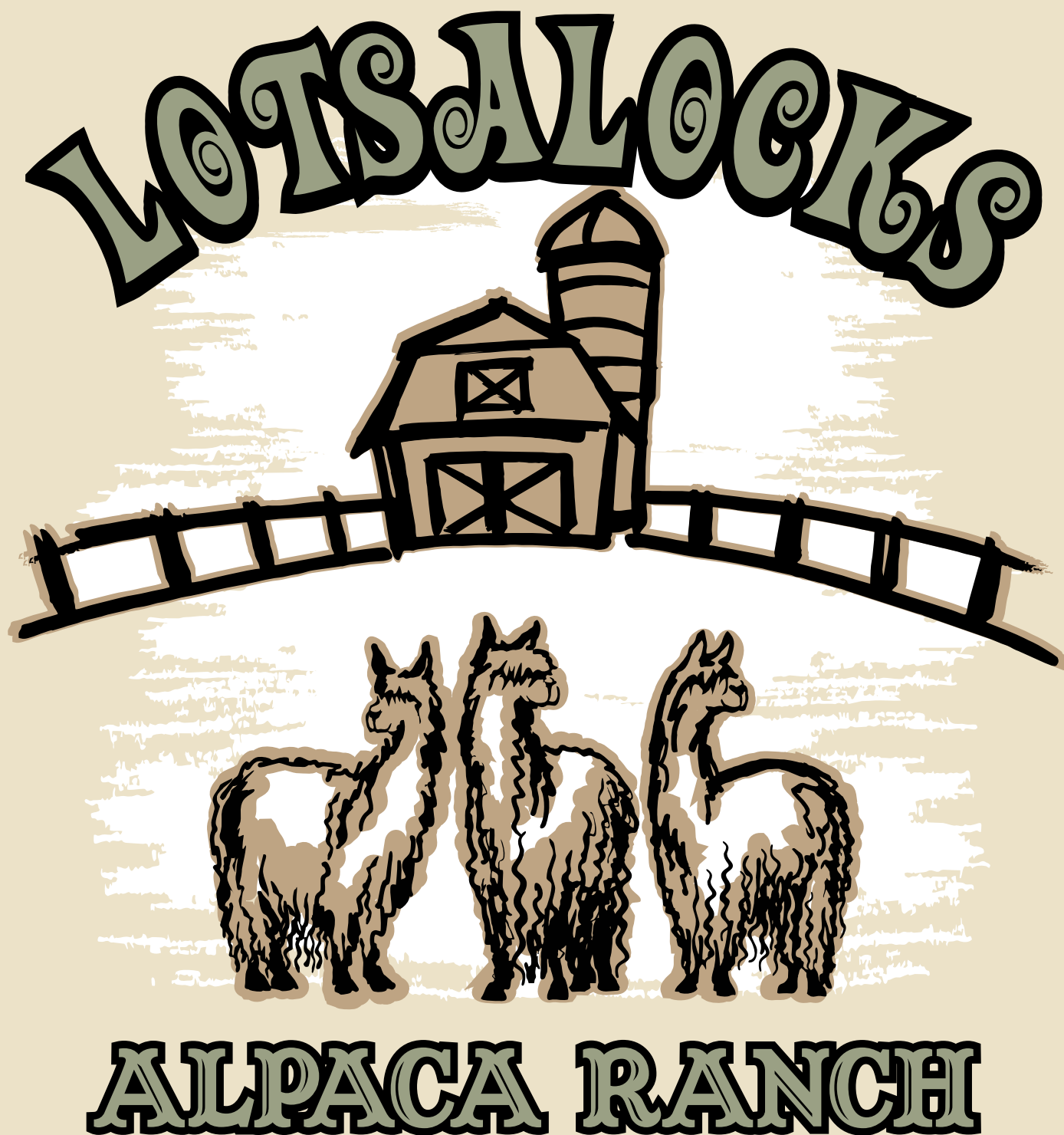
Mary Jo and her husband of 47 years met showing horses so it was a natural progression to llamas. They purchased their first two llamas in 1989 and have been involved in the llama community ever since. They reside on a small farm in Bardstown KY with a modest herd of 30 llamas and alpacas. Mary Jo has been judging for ILR-SD since its inception and for ALSA since 2000. Mary Jo is a certified llama judge in halter, performance, youth and fiber. She has enjoyed judging large and small shows throughout the U.S. and has been blessed with judging in Europe as well. She is also a certifier for the ILR Camelid Companion Certification program. Mary Jo is past President and Vice President of the International Lama Registry, past Chair of the ILR- Show Division and past representative on the ILR-SD fleece committee. Mary Jo has participated as an instructor for several ILR-SD Fleece, Halter and Performance judging seminars/ clinics. Mary Jo has served as the President as well as on the Board of Directors for the Michigan Llama Association and served on the Board of Directors for the Kentucky Llama & Alpaca Association. Mary Jo superintended the North American Llama and Alpaca Show in Louisville, KY for several years as well as co-chaired the ILR-SD Gathering of Friends and Champions. She also started and ran the Kentuckiana Llama Show for the Kentucky and Indiana Llama Associations. She and husband Larry have hosted fleece clinics at their farm and youth clinics at llama functions. The Millers enjoy sharing their llamas for exhibition or teaching seminars by taking them to Farm Days, College Education Days, State Fairs, schools in the Louisville, KY area and even a local Bass Pro Store. Before retirement, Mary Jo worked in the insurance industry both in sales in the agency setting and in product marketing and development in a home office setting. Mary Jo believes her judging abilities are broadened by also exhibiting her llamas in halter, performance and fleece classes. She is an avid spinner, knitter and felter.



TOR SORENSEN

I have been involved in the purebred sheep business since High School. In that tenure, I have had far more than my share of success in the show ring. After raising several different breeds, I settled with Natural Colored Fine and Medium Fleeced sheep (basically, black sheep) I had the privilege of raising and showing the only two ewes of this breed that have been named the Supreme Champion Ewe at the North American International Livestock Show in Louisville, KY. In addition to raising and showing my own sheep, I have been honored to work with others belonging to people across the United States. I have also enjoyed the other side of the coin and have had the opportunity to judge shows all over the country.

The Southwest Llama Company started out as a single gelding to act as a sheep guard. From the word go, I knew this was not going to satisfy my needs for long. As a child living in Panama for a couple years, I had the opportunity to see vast numbers of llamas, alpacas and vicuna running "wild" as I saw it, when travelling across South America. It would, however, be many years later before the llamas actually entered my life again. Once they got their foot in the door, they shoved it wide open!



Bart and Kathy Atkinson
2358 Peach Parkway
Ft. Valley, GA 30130

478-808-0732
lotsalocks1@gmail.com
www.lotsalocks.com

Consignment of Mark & Susan Smith
Mark Smith Farms, Crawfordsville, Indiana
SAPAVECO'S NUTTIN TO IT

Female • ILR# 289310 • DOB: 1/11/2016

GC'S CHOCK FULL 'O NUTS
LAMS NUTCRAKER
LAMS CHAR MING

ARGENTINE FRESCO
BELLISIMO RTC
BAILEY RTC

Nuttin To It came to us in utero when we purchased the Sapaveco herd. From the time she was born she has been a farm and visitor favorite. Here she is shown with our grandson, Kaden, who showed her at this year's Indiana State Fair. Her dam, "Bellissimo," is a big bodied, big boned powerhouse of a female. If you are looking for a 2017 showgirl please check her out. For more info call us at 765-918-1976 or msflama@gmail.com

LOT
1



Consignment of John & Marcia Ollendick
Ollendick Farms, Tomah, Wisconsin
OLLENDICK FARMS CASSIAN

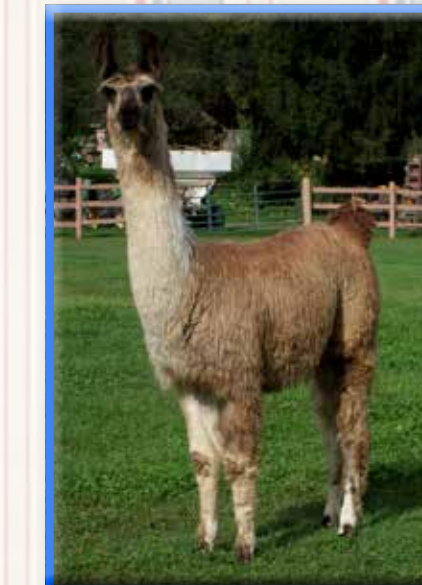
Female • ILR# 289699 • DOB: 4/19/2016

GNLC CASPIAN
CAINAN
SIAMOS PRECIOUS ANGEL

WHITE HEAT
BRADFORD SPICEY HOT
LIMERANCE

We love everything about this fancy little gal. Cassiah is always heads up in the pasture. She's very feminine with a stretchy, athletic build with great conformation and a great head and ear set. Her dam has always been a favorite in the pasture, a heavy milker, easy breeder, easy birther and all around easy keeper. Her sire, Cainan, has produced many show champions for us. There are lots of great genetics in this young female! She has a wonderful disposition, will be fun to show and later to add your breeding herd. For more information contact jmollendick@centurytel.net or call 608-374-3559.

LOT
2



Consignment of Vanessa Benagh & Sean Hart
Chip-N-Seal Farms, Rushville, Indiana

CNS FLAMBEAU

Male • ILR# 288621 • DOB: 6/6/2015

IW MARCELLUS
JLL MARDI GRAS
PPLP HUCKABOO

STAR POWER SEEKER
SERICA
SHOWDOWN'S SALSA

Flambeau is an awesome young male with everything expected from a Mardi offspring: flash, lustrous silky fiber, correct legs, stretch, top line, and style. Flambeau is the result of breeding JLL Mardi Gras and Serica, the most successful pairing we have ever had. Breeding these two lines has produced us show winner after show winner, and Flambeau has already racked up several Championships of his own. Don't miss your opportunity to take this boy home! Contact vanessa.benagh@gmail.com or call 317-446-2888.

LOT
3





LOT
4

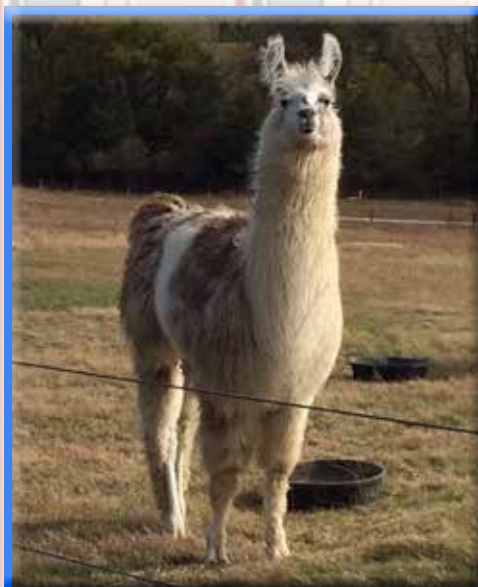
Consignment of Barb and Tom Parsons
Animal Acres Llamas, Dousman Wisconsin
AAL TANGLED UP IN BLUE

Female • ILR# 288900 • DOB: 7/26/2015

CHILEAN ESPERANZA
ELWOOD BLUES
HCLA BOLIVIAN KARMA (CAN)

AAL PERUVIAN HIGH OCTANE
PVL ILLUMINATION
PVL ILLUSION

Tangle is a young, colorful suri (can go silky with grooming) girl. She has an amazing show record with Grand and Reserve Championships in 2016. From the best pedigrees on the farms of Parsons and Laux, you can bank on the quality behind this girl. She is an Elwood Blues daughter which should catch everyone's attention! His offspring have been winning for years as well as offering outcross genetics. We hope the new lucky owners will continue showing her next year, and be assured, once in your breeding program, she will produce colorful, conformational correct offspring. Her pedigree will cross with today's herd sires many different ways! Contact Barb at 414-333-3720 if you would like additional information or email Barbparkers1234@yahoo.com www.animalacresllamas.com



LOT
5

Consignment of Randy Cipriano
RTC Llama Ranch, Garland, Nebraska
BO PEEP RTC

Female • ILR# 288790 • DOB: 11/04/2015

ARGENTINE FRESCO
TOOCOOL RTC
KALA SHAY RTC

THE BOSS
PEEKABOO RTC
MGF SUPERSTITION

Bo Peep will be one year old at sale time. She is big, stretchy and correct! Her dam, Peekaboo RTC, is one of our biggest females. Her sire, Toocool RTC, has produced some of our best animals. Bo Peep is 25 percent Argentine and is ready for the show ring. Her fiber is a silky brown, grey, white, appy type, and she has just enough Argentine to give her bone with coverage. Her pictures, pedigree and ILR can be viewed on our website: www.rtcllamaranch.com, or call Randy at 402-540-4058



LOT
6

Consignment of John & Marcia Ollendick
Ollendick Farms, Tomah, Wisconsin
OLLENDICK FARMS BRECKEN

Male • ILR# 289700 • DOB: 5-28-2016

GNLC CASPIAN
CAINAN
SIAMOS PRECIOUS ANGEL

STAR ADONIS
STAR BOMB SHELL
MGF BOBBI SOCKS

This young male has the BEST disposition we have ever seen. He's definitely a pasture favorite, especially with our grandkids, who have nicknamed him, "Curly." He has exquisite fiber that just flows. He is very correct, with a lot of style and stretch, great bone, nice tail set and beautiful head and ears. His dam, Star Bomb Shell, has been a great producer for us, a trouble-free classy dam. His sire, Cainan, has produced our best offspring, very tall, stretchy, well-balanced, well-conformed offspring with exquisite fiber. There are some great genetics here as well. For more information contact jmollendick@centurytel.net or call 608-374-3559.

Consignment of Harvey & Lisa Pool
Rock Creek Farm & Llama Co., Ft. Valley, Georgia
RCF SOUTHERN MAGNOLIA

Female • ILR# 289722 • DOB: 2/26/2016

GNLC DOM
GNLC CASPIAN
PME CRAZY FOR CRANBERRIES

BLACK JACK LWF
ALCL CLAIRE'
MAJ STEEL MAGNOLIA

This silver suri girl is definitely one of the sweetest llamas on our farm. And being sired by GNLC CASPIAN and out of ALCL CLAIRE', her lineage assures she'll keep getting bigger and better with time. She was born early and around 20 pounds, yet she is now already catching up to her contemporaries in size. If you need a square made female with bone and shag to show next year, Southern Magnolia is your girl. Don't miss out on this golden opportunity to own a silver suri female with a sweet disposition. For more information contact Harvey at hpool@rockcreekllamas.com 478-973-0124. www.rockcreekllamas.com



LOT
7

Consignment of Mark & Susan Smith
Mark Smith Farms, Crawfordsville, Indiana
MSF XENIA & CRIA, MSF DAYTON

Exposed Female • ILR# 282113 • DOB: 5/27/2010

Service Sire: GNLC Crocket

WLK HEAT
MYSTERY'S TIMONE
JAYLO RTC

WAVE OKOSAN
MSF XEROX
SWISS MISS KISS

This Timone daughter sells with her male cria, "MSF Dayton," sired by the renowned Nutcracker. To sweeten the deal, Xenia will be exposed to GNLC Crocket shortly before this sale for an Oct. 2017 cria. Timone has been our main stud for many years, producing many National Show Champions and World Futurity Champions. How many times do you get to bid on a sale lot with Timone, Nutcracker and Crocket all wrapped into one? Questions? Give us a call at 765-918-1976 or msfllama@gmail.com
Cria's ILR reg. pending • DOB: 10/8/2016



LOT
8

Consignment of Randy Cipriano
RTC Llama Ranch, Garland, Nebraska
BLUE HILLS KOHANNA

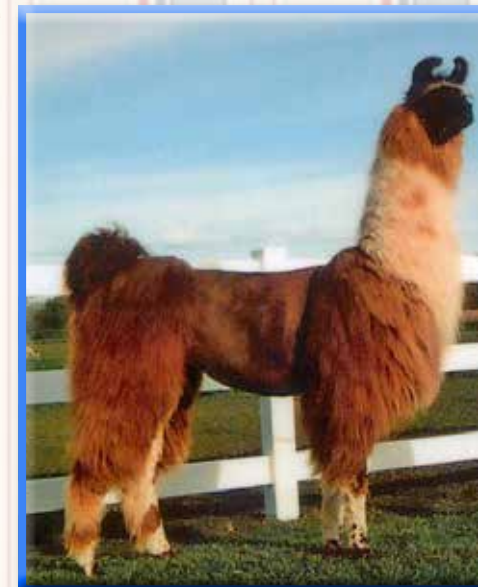
Exposed Female • ILR# 275622 • DOB: 9/21/2008

Service Sire: GNLC Scorcher • Due: Oct./Nov. 2017

FFF CHIRI COLIPE
METALIC RTC
KALA SHAY RTC

MISTY MOON'S PLIADES
MGF VELOURA
SECRET VICTORIA

Kohanna sells as a 3-in-1 package! She has been a good mom, easy breeder and sells bred/exposed to GNLC Scorcher. Kohanna is a big, stretchy, colorful female, has a nice head and great ears. She also is very correct. Her flashy black & white cria was born Sept. 25, 2016 and is half Argentine (Argentine Pascual x Kohanna). All sale animals ILR's, pictures, pedigrees, etc. can be viewed on our website www.rtcllamaranch.com or call Randy at 402-540-4058.



LOT
9



LOT
10

Consignment of Steve, Sandy & Aspen Auld
Aspen Rayne Ranch, Waverly, Iowa

DDH'S DELICIA

Bred Female • ILR# 285068 • DOB: 7/25/2012
Service Sire: PH Coat of Many Colors

TWIN LAKES PERUVIAN LIBERATOR DDH'S NAPOLEON
PERUVIAN KAPTOR DDH'S CARMELO
PERUVIAN MISS KANTILLA SWL SUNRISE

Delicia is a strong, flashy 4-year-old suri female. She is carrying her first cria, due in the late spring/early summer of 2017. This fine lady is just starting her breeding career and is sure to produce more of the wonderful fiber and bone she has been blessed with. Both she and the male she is bred to have fantastic temperaments so this should be an easy-to-handle cria with some fun colors. The sire, "Coaty," is a great performance animal, having moved from Novice to Advanced Performance in just his first year of performance. Delicia is easy to catch, halter and handle. She enjoys attention and stands well for routine maintenance. Whoever gets to take this fine lady home will enjoy everything she has to offer. For more information contact sandy@llamasrus.com or call 319-389-8254. Website www.llamasrus.com



LOT
11

Consignment of Harvey & Lisa Pool
Rock Creek Farm & Llama Co., Ft. Valley, Georgia

SWITCH THAT

Male • ILR# 288925 • DOB: 6/26/2015

GNLC MERLIN HARD ROCK'S BRAVADO
GNLC SWITCHFOOT LUA BRAVADO'S HOPE
WILD WEST BLU MOON HOPE FLOATS

Switch That has one of the most popular pedigrees in the country today. On his sire's side, GNLC Switchfoot is one of the biggest, if not THE biggest of the GNLC Merlin sons out there...and on his dam's side, a maternal brother to Ollendick Farms Camryn, who just sired an impressive group of crias for Darrell and Merlene Anderson, and has recently moved to Oregon to strut his stuff at Rick and Mary Adams' new ranch. This guy is definitely going to be a BIG llama with a dense silver fleece. Sometimes it takes silver to win gold...add this guy to your breeding program and don't look back! . For more information contact us at hpool@rockcreekllamas.com 478-973-0124. www.rockcreekllamas.com



LOT
12

Consignment of Larry & Mary Jo Miller
Brooks Creek Llamas, Bardstown, Kentucky

JUSTISE & FEMALE CRJA, KATO

Bred Female ILR# 282742 DOB: 5-11-11
Service Sire: Kellin

HARD ROCK'S INFERNO ONE STANDING OVATION
SOLID ROCK'S TRADEMARK OVATION'S SUGAR BABY
RILEY-AMIGA MIA MCF JUMBLIE

Crazy Mountain Man on the dam side and Chilean Icon, by the way of her sire, Solid Rock's Trademark, make this striking gal a winner. Justise is very upright and square with correct tracking. She has had two crias and is rebred to Kellin a Whist and Jackpot grandson and a great grandson of The Canadian, El Fuerte and Crazy Mountain Man for a fall 2017 cria. If you are seeking a silky, big, powerful, correct girl with lots of eye appeal, take a look at her cria, Kato. Her sire, Prime, has put several top of the line animals on the ground, among them Brooks Creek McCarty the 2015 All American Llama winner at the ILR Gathering of Friends and Champions. His offspring, including Kato, are known for their correctness, style and presence. Now you know where the size and style come! Kato is one of three 2016 female spring crias we have, all out of Prime. She is a big, strong, silky, striking female. We'd love to show her to you! Contact Mary Jo Miller with questions! 502-350-4525 brookscreekllamas@gmail.com Cria's (Kato) ILR# 289596 • DOB: 4/29/2016

NEEDMOR'S MINNETTE WITH CRJA, NEEDMOR'S RIO TALOBAY

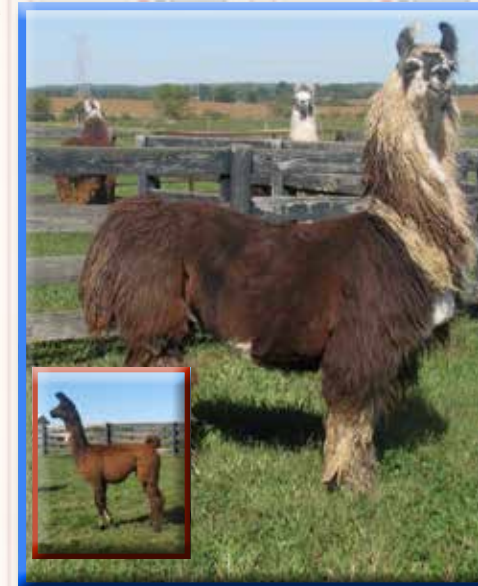
Female • ILR# 263892 • DOB: 10/18/2005

GC'S LAUDY, LAUDY CORNUCOPIA
MRLE ADONIS PLATANA'S SONG DAHLILA
GC'S APRAPOH PLATANA'S SONG

Minnette is a beautiful, large-boned, heavy wool female. Her show record is outstanding. She received her ALSA Champion Certificate in May, 2007. She has produced wonderful crias, including NeedMor's Call me Sassy, now residing with Chris and Vanessa Carter. Her disposition, which is gentle and easy, is passed on to her offspring. For more information contact Beth Myers at llama@windstream.net or call 614-563-5262.

Cria's DOB: 06/11/16 • Cria's Sire: Hard Rock's Enterprise

LOT
14



Consignment of Steve, Sandy & Aspen Auld
Aspen Rayne Ranch, Waverly, Iowa

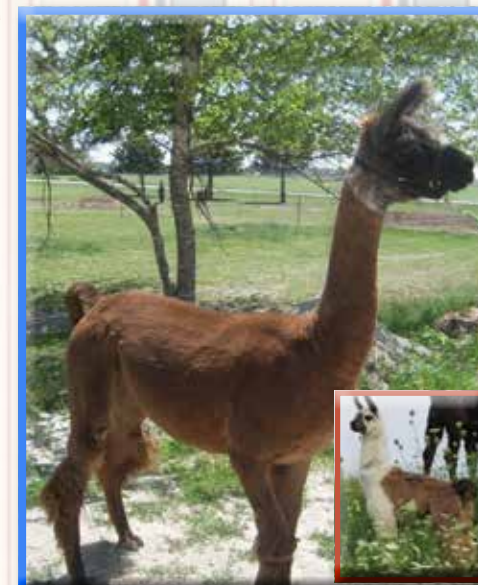
SANTANA'S MOON GLOW WITH FEMALE CRJA, COATY'S PRINCESS LUNA ARB

Bred Female • ILR# 277230 • DOB: 9/21/2008
Service Sire: GHLC Main Squeeze • Due: June 2017

MCF PLATINUM
REBANO ESCONDIDO COPIAPO OVATION'S SUGAR BABY
G.L.L. CRANADA

How often do you get the chance to get your hands on a Copiapo daughter?! Not to mention, one with a fantastic show quality female at her side AND bred to a wonderful, proven, large-boned suri male. Moon Glow comes out of Jean & Gary DeBoom's breeding program and is a solid mother with lots of milk and strong bonds with her cria (all females so far). Moon Glow's rich red fiber is some of the best-selling fiber on our farm. She is a wonderful foundation female and would be a great asset to anyone's breeding program. Princess, her 4-month-old female cria at side, is a gorgeous show quality female with lots of spunk and her mother's rich red fiber and "Phantom of the Opera" mask. It is really hard to let her go, but we can't show them all, so someone else will get the fun of winning lots of ribbons and trophies with this bundle of fun. For more information contact sandy@llamasrus.com or call 319-389-8254. Website www.llamasrus.com Cria's ILR# 289570 • DOB: 6/19/2016 • PH Coat of Many Colors x Santana's Moon Glow

LOT
15



Consignment of Elaine Painter
Alive-N-Fuzzy Alpaca Farm, Bowling Green, KY

ANF RJ

Male Alpaca • ARI# 35316206 • DOB: 5/01/2014

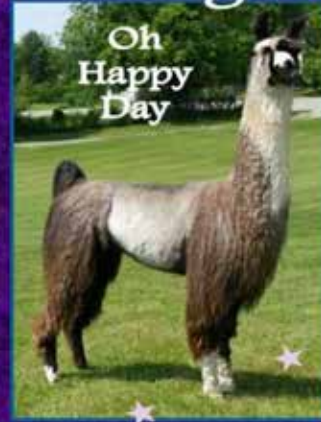
MFI Peruvian Jericho Pperuvian Royal Fawn 6014
FPA JERICHO'S TUSCANO PMF LATTE
Snowmass Tuscany Southern Jewell RLF

RJ has an impressive pedigree which includes his maternal grandsire, ROYAL FAWN. Some would argue that no other alpaca in the country has had as much impact on the industry as PPeruvian Royal Fawn. He is a full Accoyo male with a history of passing on his fine fibered genetics to his 336 offspring. Hand selected by the late Dr. Jim Vickers, Royal Fawn is the only light fawn Accoyo ever exported from Don Julio Barrenda's herd. RJ has MFI Peruvian Jerico and Snowmass Tuscany as paternal grandparents. Jerico is a dark fawn male with a very advanced bundling dark fawn fleece. Snowmass Tuscany is a regal girl. She stands tall and beautiful with a feminine face, straight lines and solid conformation. Put RJ to work in your herd and let these genetics improve your herd! For more information contact Elaine at docepaint@yahoo.com or call 606-633-8774.

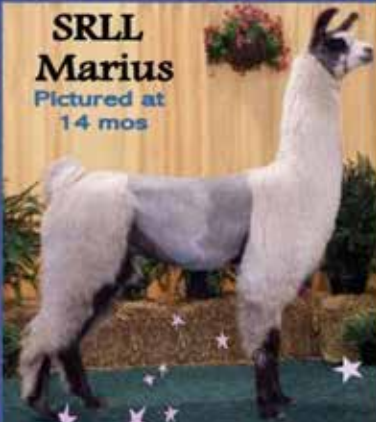
LOT
16



Striding forward with our ★ Herdsire ★ Line-up

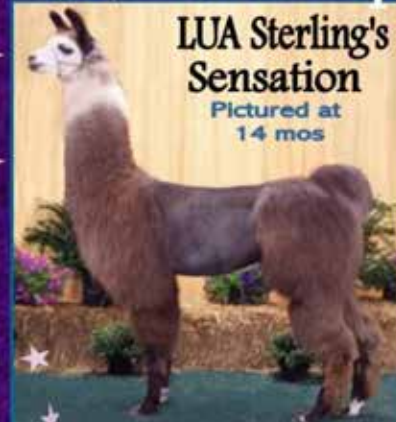


Oh
Happy
Day

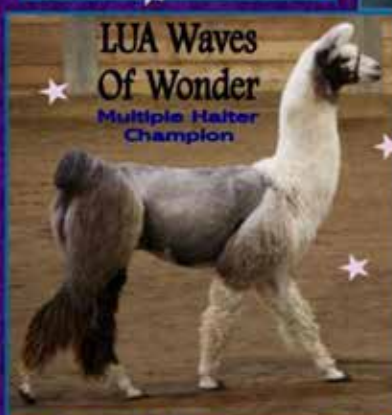


SRLL
Marius
Pictured at
14 mos

★ Happy
Marius &
★ Sterling
are 2016
★ ILR-SD ★
★ National
Champions! ★



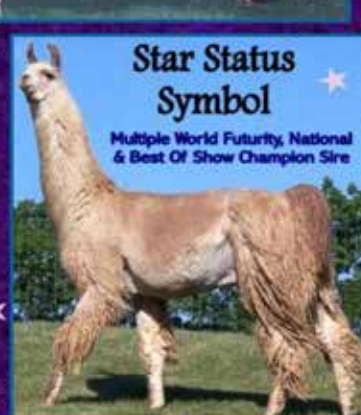
LUA Sterling's
Sensation
Pictured at
14 mos



LUA Waves
Of Wonder
Multiple Halter
Champion



MGF Argentine
The Masters
Hand



Star Status
Symbol
Multiple World Futurity, National
& Best Of Show Champion Sire

National Champion Llamas & Little Aussies ★ www.LashesUniqueAnimals.com

Belles & Beaus of Louisville Llama Sale Terms and Conditions

The following Terms & Conditions including any announcements by the Auctioneer before or during the auction, constitute the entire agreement between the Belles and Beaus of Louisville Sale Management and Sale Consignors, on the one hand, and the bidders at the auction, on the other hand.

- The Belles and Beaus of Louisville Llama Sale will be held November 5, 2016.
- Enclosed is my check for \$150.00 to pay the consignment fee. I understand and agree that this fee is non-refundable and non-transferable for any reason once confirmation is made of my sale entry. Once accepted, this entry will be reserved for the Belles and Beaus of Louisville Llama Sale only.
- In the event this animal is sold prior to the sale or if for any reason I withdraw this entry from the Belles and Beaus of Louisville Llama Sale, other than as certified by a veterinarian, I will be charged a \$200.00 withdrawal fee.
- There will be a 10% commission fee charged if an animal receives a minimum bid or meets the seller's reserve. If there is no sale, there will NOT be any commission charged.
- I agree to pay a 10% of the highest bid received whether I sell the llama or exercise my option to have the last bid and/or reserve and buy back the llama.
- A minimum of commission of 10% of the selling fee will be charged. Belles and Beaus of Louisville Llama Sale will deduct that selling fee from the proceeds of the sale when making payment.
- No Substitutions will be allowed without prior approval from the Belles and Beaus of Louisville Llama Sale Management.
- Minimum starting bid is \$1000. If your llama fails to receive an opening bid of \$1000 it will be considered a no sale.
- All sales constitute a contract between the buyer and seller of each animal sold. Belles and Beaus of Louisville Llama Sale assumes no responsibility, legal or otherwise, in regards to the sale contract.
- I understand that no payment will be made to me until such time as the buyer has made satisfactory payment to the Belles and Beaus of Louisville Llama Sale and as soon as the buyer's check clears the bank. As soon as the check clears the bank the registration papers will be sent to the buyer and I (the consignor) will be paid by check less commissions.

Warranties:

- Proven Producers: A proven producer is a female that has already had a cria. Proven producers will be considered to be fertile. There are no expressed or implied warranties for proven producers.
- Newborn Crias: There are no expressed or implied warranties on newborn crias sold with their dams.
- Bred Maidens: A bred maiden is a female that has not yet had a cria but is determined to be pregnant. There are no other expressed or implied warranties for bred maidens.
- Young Females: Young females are guaranteed to have anatomically normal reproductive tracts. There are no other expressed or implied warranties for young females.
- Proven Males: A proven male is a male that has settled a female or that has been tested fertile. Proven males will be considered to be fertile. There are no expressed or implied warranties for proven males.
- Young Males: Young males have been checked by a veterinarian and have been found to have anatomically normal reproductive organs. There are no other expressed or implied warranties for young males.
- Young Males and Females: Buyer's veterinarian must notify the Seller in writing within one year of the sale of any claimed abnormality with respect to Young Males or Young Females. The Seller shall, at the Seller's option, either (1) replace the llama with a llama of equal quality, or (2) give the Buyer credit toward the purchase from Seller of another llama of the same or different sex in an amount equal to the total amount of the purchase price.
- All sale animals must be fully registered or screened as a llama or alpaca, as approved by ILR and/or the Belles and Beaus of Louisville Llama Sale.
- DNA Testing Requirements: The LFA sale will be on a private treaty basis and DNA testing will not be required. Belles and Beaus of Louisville Llama Sale is not responsible for genetic parentage of auction or claims entries due to DNA testing not being required.

- EXCEPT AS EXPRESSLY STATED ABOVE, SELLER MAKES NO WARRANTY OF MERCHANTABILITY AND WARRANTY OF FITNESS FOR ANY PARTICULAR PURPOSE, NOR DOES SELLER MAKE ANY WARRANTY EXPRESSED OR IMPLIED OF ANY NATURE WHATSOEVER WITH RESPECT TO THE ANIMALS IN THIS SALE. The foregoing is the full extent of the responsibility of the Seller, and by way of illustration and not limitation, in no event shall the Seller be liable for incidental or consequential damages, or for any changes or expenses of any nature incurred without Seller's written permission.
- Terms: Terms of the sale are cash or check. Payment in full must be made to the cashier immediately following the sale. Personal checks are to be made payable to "North American Llama Show". Seller reserves the right to require a certified check as settlement before releasing an animal.
- If Visa or MasterCard are used to purchase animals, the charge is subject to bank approval and a processing fee will be added to the purchase price.
- Bidding: The highest bidder recognized by the Auctioneer shall be the Buyer. Bids tendered after the fall of the hammer are not valid grounds for dispute. If any dispute arises between two or more bidders or in the event of doubt on the Auctioneer's part as to the validity of any bid, the Auctioneer will have the final discretion either to determine the successful bidder, or to re-offer and resell the llama in question. The Auctioneer's determination is conclusive and not subject to challenge. The Auctioneer reserves the right to reject any bid.
- Title and Delivery: Title passes to the Buyer upon the fall of the hammer. All risk of death or injury to the llama becomes the Buyer's risk upon the fall of the hammer. Each Buyer, following their purchase, shall sign an Acknowledgment of Purchase. Please write your full name and address clearly.
- Registration Papers: All registration papers will be delivered by First Class Postage when checks clear the bank. Please write your full name and correct and current address on the envelope provided for you by the cashier. Seller will pay all transfer fees.
- Default of Purchase: If any person shall purchase a lot and fail to pay for it in the manner described above, the Seller shall have, in addition to all other legal rights, the right to resell the lot, or at Seller's option, bring an action for specific performance, in which event the defaulting Buyer agrees to pay all costs of such suit, together with all reasonable attorney's fees and costs. In the event of a resale, the defaulting Buyer agrees to pay all costs of the resale, plus any deficiency between the original total purchase price and the total purchase price upon resale.
- Transportation: The Buyer, at the Buyer's own expense, shall transport the llama from the auction. Any arrangement or disposition of the llama after purchase other than immediate removal must be made directly between the Buyer and Seller.
- Catalog: Every effort has been made to assure correctness of the catalog, but the Seller is not responsible for errors or omissions. Any corrections made to the catalog at the time of the sale from the Auctioneer's podium shall supersede the catalog.
- No Liability: Any person attending the sale, whether as a Buyer, observer, or the agent, employee or assign of any persons, does so at their own risk. No liability, duties, obligations, and/or responsibilities of any kind or nature shall be imposed upon the Sellers, the Auctioneer, or any owners, employees or assigns of NAILE, North America Llama Show or Belles and Beaus of Louisville Llama Sale, for any accident, injury, mishap theft, damage, and/or other harm regardless of cause.
- Disclaimer of Liability of Auctioneer: Neither the Auctioneer, the Sellers, nor any agent, make any representation or warranties whatsoever with respect to the sale animals. All representations contained herein are made by the Seller only.
- Authorized Agents: Persons acting as agents must so indicate when signing Acknowledgment of Purchase.
- Governing Law: The laws of the State of Kentucky will govern the sale and all transactions between the Buyer and Seller.

NORTH AMERICAN



Llama and Alpaca Show

See You Next Year!

