

# THE PACIFIC BASIN MUSIC FESTIVAL



E x p l o r e T h e W o r l d W i t h M u s i c

## JOHANSEN HIGH SCHOOL CONCERT BAND 2020 PACIFIC BASIN MUSIC FESTIVAL

**March 21 – 26, 2020**

As of: December 19, 2019

*(itinerary details subject to change)*

### **DAY ONE: Saturday, March 21, 2020 – OAKLAND → HONOLULU – Rehearsal**

- 6:30am Arrive at the Oakland International Airport (OAK) at least 2 hours prior to your flight's departure. Check-in to your flight and proceed through security and on to your departure gate.
- 8:35am Depart for Honolulu on Hawaiian Airlines HA47.
- 11:30am Arrive into Honolulu at Daniel K. Inouye International Airport (HNL)! Proceed to baggage claim, collect your luggage and enjoy a traditional Hawaiian Lei Greeting.
- ~12:30pm Load the coach, and depart for the Waikiki Resort.

#### ***Waikiki Resort***

*2460 Koa Ave  
Honolulu, HI 96815*

- ~1:30pm Upon arrival at the hotel, you will be met by a World Projects representative who will assist you with check-in.  
*Please note while official check-in time is 3pm, all rooms might not be ready at this time. Thank you for your patience.*
- Afternoon After checking in, enjoy lunch on own and time to explore Waikiki!
- 2:30pm Later, meet at the 'Alohilani Resort in the Stingray Room on Level 2 with instruments and enjoy a 60-minute **rehearsal**.
- 3:30pm Afterwards, return your instruments to your rooms and enjoy the rest of the evening on own.
- Evening Enjoy dinner on own.
- 8:30pm Later, the Director or group representative will be required to attend a Directors' Orientation Meeting at the 'Alohilani Resort. This will give you a chance to meet the Festival Staff and go over the schedule and any last-minute questions you may have.
- 9:00pm Afterwards, we invite you to attend an informal Reception at the 'Alohilani Resort. This will give you a chance to meet the other directors and faculty at the Festival in a more social atmosphere.
- 10:30pm Reception concludes.

# THE PACIFIC BASIN MUSIC FESTIVAL



E x p l o r e T h e W o r l d W i t h M u s i c

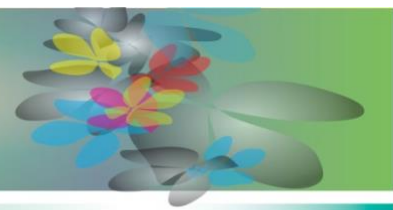
## **DAY TWO: Sunday, March 22, 2020 – HONOLULU (D) – Exchange Rehearsal & Workshop**

- Morning  
8:30am Enjoy breakfast on own.  
After breakfast, meet at the ‘Alohilani Resort in the Stingray Room on Level 2 with instruments and enjoy a 90-minute *exchange rehearsal* with the Normal West High School Wind Ensemble from Illinois!
- 10:00am After your rehearsal, pack up your instruments.  
Afternoon  
1:00pm Enjoy lunch on own in the area.  
Later, return to the ‘Alohilani Resort in the Stingray Room on Level 2 and enjoy a *workshop* with a Festival Faculty Member!
- 2:00pm After the workshop, pack up your instruments and return them to your rooms.  
The rest of the afternoon is free for sightseeing on own.  
Later, return to the hotel where you will have time to freshen up for this evening.
- 7:15pm Meet in the lobby and a World Projects festival staff member will escort you to the Sheraton Waikiki Resort.  
*Seating allocations will be given to the group at the Director’s Orientation.*
- 7:30-10:30pm Enjoy this evening’s Pacific Basin Music Festival Welcome Dinner Dance!  
Throughout the evening, enjoy a plated dinner, introductions from the Festival Staff, and a chance to socialize with like-minded peers from around the world.
- 10:30pm Dinner Dance concludes.  
Return to your hotel.

## **DAY THREE: Monday, March 23, 2020 – HONOLULU – Outdoor Performance**

- Early Morning  
7:00am Enjoy breakfast on own.  
After breakfast, load the coach and transfer to Pearl Harbor where you will have the chance to tour the USS Arizona Memorial.  
*Note: No bags are allowed (including purses and camera bags). It is best to leave all bags at the hotel if possible. There is a bag check onsite available for a fee.*
- 10:30am Afterwards, return to Waikiki and enjoy free time on own.  
Afternoon  
3:00pm Enjoy lunch on own.  
Later, load the coaches with instruments and transfer to the Ala Moana Shopping Center.
- 4:00pm Upon arrival, there will be time to warm-up.  
5:00-5:45pm Enjoy your *outdoor performance*!  
5:45pm Afterwards, pack up your instruments and load the coach.  
6:00pm Return to the hotel and enjoy dinner on own.  
The rest of the evening is free.

# THE PACIFIC BASIN MUSIC FESTIVAL



E x p l o r e T h e W o r l d W i t h M u s i c

## **DAY FOUR: Tuesday, March 24, 2020 – HONOLULU – *Adjudicated Performance***

Morning	Enjoy breakfast on own. This morning and afternoon are free for sightseeing on own.
Afternoon	Enjoy lunch on own. Later, meet as a group at the ‘Alohilani Resort in the ‘Alohilani Room on Level 6 with instruments.
4:15-4:35pm	Enjoy a 20-minute sound check in the ‘Alohilani Room. A group photo will be taken at the sound check.
4:35pm	After your sound check, enjoy dinner on own.
6:30pm	Return to the ‘Alohilani Resort for this evening’s concert and find your seats in the audience.
7:00pm	Concert begins.
7:15-7:35pm	Performance by the Salesian College Concert Band from Australia.
7:35pm	You will be escorted from the audience by a festival staff member to your warm-up room.
7:45-8:05pm	Performance by the East High School Symphonic Orchestra from Alaska.
8:15-8:35pm	Enjoy a <i>performance</i> as part of the Festival Adjudicated Concert (20 minutes performance time, 5 minutes on/off time).
8:35pm	After the performance, you will be escorted to the foyer to store instruments and then return into the audience for the remainder of the concert.
8:45-9:05pm	Performance by the Pinecrest Academy Cadence Band from Nevada.
9:15-9:35pm	Performance by the Normal West High School Wind Ensemble from Illinois.
9:45-10:05pm	Performance by the Grants Pass High School Orchestra from Oregon.
10:10pm	The concert will end with closing remarks. After the concert, collect your instruments from the foyer and return to your hotel.

## **DAY FIVE: Wednesday, March 25, 2020 – HONOLULU (L) – *Command Performance***

Early Morning	Enjoy breakfast on own. This morning is free for sightseeing on own.
10:30am	Later, meet in the hotel lobby. You will be escorted by a World Projects Festival staff member to the Farewell Luau at the Waikiki Shell.
11:00am	Upon arrival, the Festival Photographer will take the mass Festival Photograph. Afterwards, enjoy a buffet lunch and some other fun luau activities (Polynesian dancing, etc.).
2:00pm	Luau concludes. Return to the hotel. Enjoy some free time for sightseeing on own.
Evening	Enjoy dinner on own.
5:45pm	After dinner, load the coach and transfer to Hawaii Theatre.
7:00pm	Attend (or possibly perform as part of) the <i>Festival Command Performance Concert</i> . Afterwards, load the coach and return to the hotel.

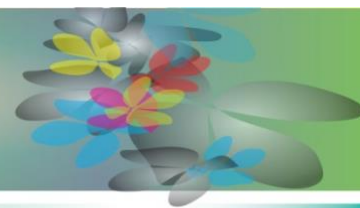
## **DAY SIX: Thursday, March 26, 2020 – HONOLULU**

Morning	Enjoy breakfast on own. After breakfast, check out of the hotel and load the coach.
9:00am	Transfer to the airport.
10:00am	Upon arrival, check-in to your flight and proceed through security on to your departure gate. <i>You may wish to purchase food at this time to bring on the plane with you.</i>
12:45pm	Depart for California on Hawaiian Airlines HA48.
9:05pm	Arrive into Oakland International Airport (OAK)! Proceed to baggage claim to collect your luggage. Return home via your own transportation.

**WELCOME HOME!!!**

**World Projects Headquarters: 601 First Street, Suite 200 • Benicia, CA 94510  
Toll Free Tel: 1-800-922-3976 • Tel: (707) 556-5885 • Fax: (707) 556-5896  
Web-site: [www.world-projects.com](http://www.world-projects.com)**

# THE PACIFIC BASIN MUSIC FESTIVAL



E x p l o r e T h e W o r l d W i t h M u s i c

## JOHANSEN HIGH SCHOOL CONCERT BAND 2020 PACIFIC BASIN MUSIC FESTIVAL

March 21 – 26, 2020

As of: December 19, 2019

### **PACKAGE INCLUSIONS:**

- ◆ ACTUAL Roundtrip, economy-class airfare on Hawaiian Airlines (OAK-HNL-OAK) including estimated taxes and fuel surcharges (*subject to change until ticketing*)
- ◆ Five (5) nights' hotel accommodation at the Waikiki Resort
- ◆ All required group coach transportation during the festival per itinerary (including airport in Honolulu, and a lei greeting)
- ◆ Meals:
  - ◆ Lunch – One (1) Festival Luau and buffet lunch
  - ◆ Dinner – One (1) Festival Welcome Dinner/Dance Party
- ◆ Festival Directors' Reception
- ◆ Workshop & performance arrangements as follows:
  - ◆ Festival performance and recorded adjudication comments (20 minutes)
  - ◆ PBMF Outdoor Series Performance at Ala Moana or similar
  - ◆ 60-minute workshop with a Festival Faculty Member
  - ◆ Exchange Rehearsal with another festival ensemble
  - ◆ 60-minute rehearsal
- ◆ Visit to Pearl Harbor and the USS Arizona Memorial
- ◆ Festival performance recording
- ◆ Official Festival Souvenir Program, Festival T-Shirt and Festival Artist Pass Lanyard for each participant
- ◆ Festival Award Plaque
- ◆ Festival registration fees & access to all Festival concerts & events
- ◆ Official Festival photographer at adjudicated performance venues and luau
- ◆ One souvenir print of the Festival Luau photo (additional prints of the luau and group pictures can be ordered separately)
- ◆ Percussion and other equipment as noted: Conductor's Podium, Piano/Keyboard, two (2) String Bases, Timpani (set of 4), Concert Bass Drum, Marimba, Xylophone, Vibraphone, Chimes (Tubular Bells), Orchestra Bells (Glockenspiel), Tam-Tam, stands

### **PACKAGE EXCLUSIONS:**

- ◆ Baggage fees
- ◆ Coaching to/from OAK airport
- ◆ Meals not mentioned in Inclusions
- ◆ Items of a personal nature (laundry, room service, internet connection fees, etc.)
- ◆ Additional sightseeing excursions
- ◆ Medical, Cancellation, or Instrument Insurance

# THE PACIFIC BASIN MUSIC FESTIVAL



E x p l o r e T h e W o r l d W i t h M u s i c

## JOHANSEN HIGH SCHOOL CONCERT BAND 2020 PACIFIC BASIN MUSIC FESTIVAL

March 21 – 26, 2020

As of: December 19, 2019

### PACKAGE COST PER PERSON

*Based on a minimum of 50 travelers  
(Gratis is based on Double occupancy price)*

Five (5) Night Package	QUAD	TRIPLE	DOUBLE	SINGLE
Waikiki Resort	US \$1,628.00	US \$1,718.00	US \$1,888.00	US \$2,388.00

### NOTES

- ◆ **Airfare:** ACTUAL Airfare on Hawaiian Airlines has been included in the above costs. World Projects is currently holding fifty (50) total seats. The base fare is guaranteed – taxes and surcharges are subject to change until ticketing – should additional taxes or surcharges be levied, World Projects retains the right to pass on all such surcharges to Johansen High School Concert Band.
- ◆ **Baggage Fees:** Baggage fees are set by Hawaiian Airlines. Hawaiian Airlines currently (as of December 19, 2019) charges \$30 for the first checked bag (\$60 roundtrip) and \$40 for the second checked bag (\$80 roundtrip), provided each bag is less than 50 lbs. and has does not exceed 62 linear inches. Johansen High School will be responsible for all baggage fees. Fees are to be paid at the airport at the time of check-in.
- ◆ **Costs:** Costs represented above are based on 2020 festival rates.
- ◆ **Payments:** All payments must be made by school check, bank check, or cash – credit cards will not be accepted.
- ◆ **Quad / Triple Rooms:** Quad is four (4) people per room / two (2) double beds per room and triple is three (3) people per room / two (2) double beds per room – sharing beds will be necessary.
- ◆ **Gratis:** Gratis is based on double occupancy price.
- ◆ **Numbers:** World Projects reserves the right to recost the tour should the number of travelers fall above or below the numbers shown above.
- ◆ **Agreement:** World Projects will issue a Performance Agreement detailing the costs, inclusions/exclusions, payment and cancellation schedule, and terms of the tour proposal for the director to sign.
- ◆ **Travel Protection Plan:** World Projects will purchase the Student Protection Plan for each participant. Details of the plan will be sent to the group director.
- ◆ **Required Forms:** All travelers will be required to submit signed liability waivers and medical authorizations forms as issued by World Projects to participate in the festival.

### PAYMENT AND CANCELLATION SCHEDULE

Date	Payment / Type	Cancellation / Refund
RECEIVED	US \$2,000 per group deposit	Non-refundable
RECEIVED (50)	US \$50 per person Air Deposit	100% refundable to December 16, 2019
RECEIVED (50)	US \$350 per person	50% refundable to December 15, 2019
January 15, 2020	Final Air Balance	Non-refundable
February 1, 2020	Balance in Full	50% refundable to February 15, 2020