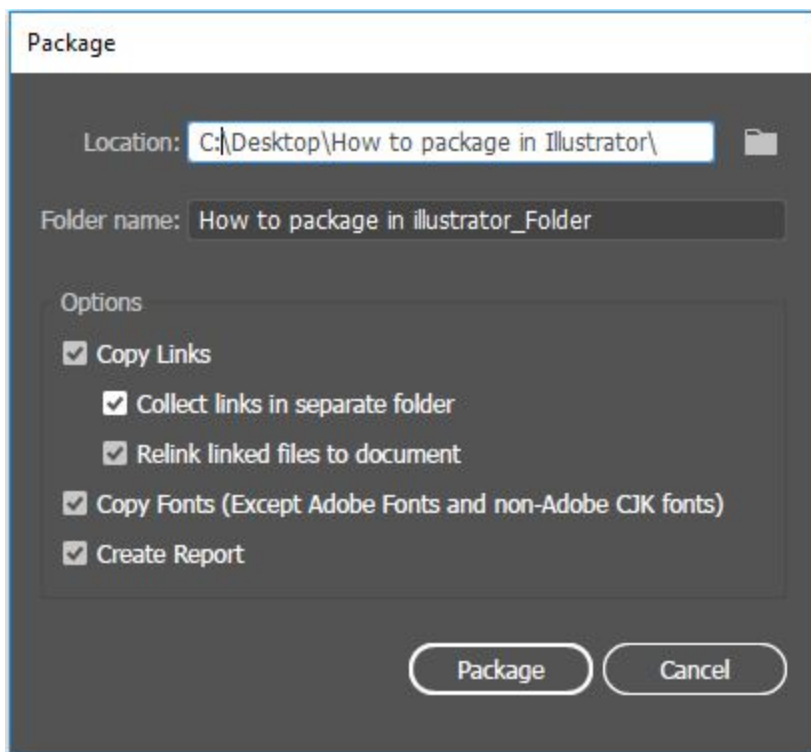


When you package a file, you create a folder that contains the Illustrator document, any necessary fonts, linked graphics, and a package report. This report, which is saved as a text file, includes the information about the packaged files. To try out this feature, follow these steps:

1. Go to File → Package

The Package dialog box appears, as you see in the picture.



- Choose a location to save the packaged Folder.
- Select options that allow you to collect links as well as fonts and put them in the folder along with a copy of the Illustrator file.

2. Click Package

3. Done