



Baldwin Marchack, DDS, MBA



**CENTER FOR ADVANCED EDUCATION IN DENTISTRY
SURGICAL | RESTORATIVE**

566 El Dorado Street, Suite 100, Pasadena, CA 91101



Christopher Marchack, DDS

Fixed and Removable Implant Supported Solutions for Fully Edentulous Arches

Fully Edentulous Module

Presented by Baldwin Marchack, DDS, MBA and Christopher Marchack, DDS

COURSE OVERVIEW

Options for fixed complete dentures supported by 4 or more implants will be presented. But removable complete dentures continue to be the only solution for edentulous arches when patients cannot afford implant supported fixed rehabilitations or simply do not want contemporary fixed reconstructions on 4 or more implants.

However, especially with the mandibular removable complete denture, retention and function can be greatly improved with as little as two implants and retentive abutments or bars.

This workshop will discuss the advantages and disadvantages and the indications for retentive devices such as Hader bars and Locator abutments, as well as the options for fixed implant supported prostheses.

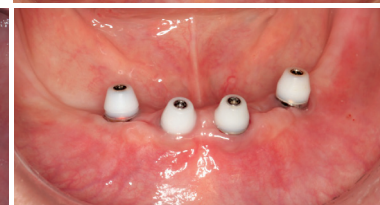
COURSE OBJECTIVES

- Decision making and treatment planning for removable vs fixed complete dentures supported by implants
- Understand implant supported removable overdentures vs overdentures that are stabilized by implants but are still tissue supported
- Understand how Locator abutments function
- How to make accurate full arch implant impressions
- Fixed provisionalization options with implants for fully edentulous arches

This session is intended for clinicians who already have some working knowledge of implant dentistry. In this course, participants will gain confidence and proficiency in restoring most full arch implant supported situations. Various fixed and removable options will be presented. Both internal and external connections will be discussed, as well as the use of non-engaging multi-unit abutments. Attendees will have the opportunity to participate in hands-on workshops on both days. They will participate in exercises to pick up attachments for overdentures on Locator abutments, and learn how to take impressions of these abutments. Participants will also learn techniques for accurate full arch implant impressions, fabricating provisionals for fully edentulous arches, converting a removable complete denture into a fixed provisional and learning how to assess the fit of full arch metal or zirconia bars and frameworks. – Receive 16 hours of continuing education.

DIAGNOSIS AND TREATMENT PLANNING

- Standard of care
- Treatment planning for fully edentulous arches
- Indications and contraindications for fixed vs removable
- Advantages and disadvantages of fixed vs removable
- Implant Retained vs Implant Supported solutions
- Removable options for fully edentulous arches
- Fixed options for fully edentulous arches
- Number of implants required for various situations
- Surgical Guides for ideal implant placement



REMOVABLE IMPLANT-SUPPORTED/IMPLANT-RETAINED SOLUTIONS

- Number of implants
- Locator abutments
- Bars and super-structures

FIXED IMPLANT RESTORATIVE PROCEDURES

- Cement vs screw retained restorations
- Biomechanics and occlusion
- Splinting at implant level, abutment level and restoration level
- Angulated screw channels
- Provisionalization options
- Accurate Impression techniques for multiple implants
- Material selection

HANDS-ON WORKSHOP

- Insert Locator abutments to implants
- Retrofit Locator abutment denture caps to an existing denture
- Make impressions for Locator abutments if a new denture is to be fabricated
- Fabricate a surgical guide by duplicating an existing removable full denture
- Convert a removable complete denture into a fixed provisional prosthesis
- Make accurate full arch implant impressions

DATE: Friday & Saturday, December 8-9

TUITION: \$1195

Early Bird Registration: \$1075
(30 days in advance)

COURSE INCLUDES

Lunch, refreshments, and course materials

To register, call **813-444-1016**

TIMES: DAY 1

8:00 to 12:00 Lecture

12:00 to 1:00 Lunch

1:00 to 5:00 Hands-on

DAY 2

8:00 to 12:00 Lecture

12:00 to 1:00 Lunch

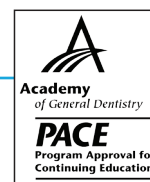
1:00 to 5:00 Hands-on

CEU's: 16 credit hours

For information on this or other seminars contact: Deb Goldman - 813.444.1016 Office

Email: dgoldman@wsperio.org • 813.444.1011 • 877.864.0263

To register online go to www.wsperio.org





CENTER FOR ADVANCED EDUCATION IN DENTISTRY
SURGICAL | RESTORATIVE

P. O. Box 1379, Lutz, FL 33548

Non-Profit
US Postage
PAID
Permit 2397
Tampa FL



CENTER FOR ADVANCED EDUCATION IN DENTISTRY
SURGICAL | RESTORATIVE

566 El Dorado Street, Suite 100, Pasadena, CA 91101

First Name: _____ **Last Name:** _____

Title: _____ **Specialty:** _____ **DL #:** _____

Address: _____

City: _____ **State:** _____ **Zip:** _____

Business Phone: _____ **Add'l Phone (Optional):** _____

Email: Fax: _____

Meal Preference: ☐ **Vegetarian** ☐ **No Preference**

☐ **Check Enclosed** ☐ **Visa** ☐ **MasterCard** **Exp Date:** _____
(Payable to CAED)

Card Number: _____ **Signature:** _____