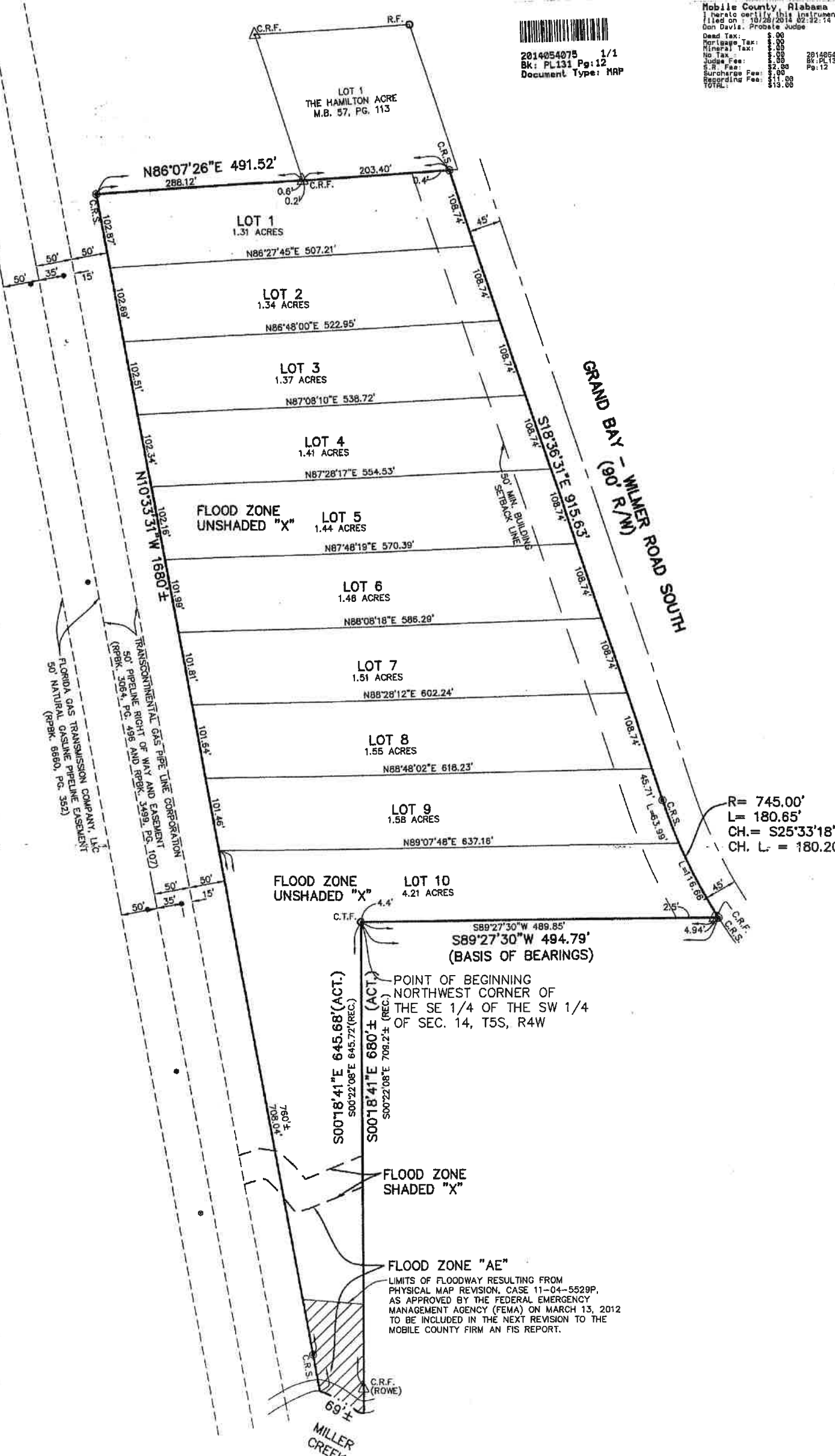


Mobile County, Alabama
 I hereto certify this instrument
 filed on: 10/26/2014 02:32:14 PM
 Don Davis, Probate Judge

Dead Tax:	\$ 0.00
Perilage Tax:	\$ 0.00
Mineral Tax:	\$ 0.00
No. Tax:	\$ 0.00
Judge Fee:	\$ 0.00
S.R. Fee:	\$ 2.00
Surcharge Fee:	\$ 0.00
Recording Fee:	\$ 11.00
TOTAL:	\$ 13.00

2014054075 1/1
 BK: PL131 Pg:12
 Document Type: MAP



R = 745.00'
 L = 180.65'
 CH. = S25°33'18"E
 CH. L. = 180.20'