

OVER 100 CHILDREN WHO DO NOT HAVE EQUAL OPPORTUNITY FOR EDUCATION

IMPLORE YOU TO VOTE YES FOR THE SEELEY LAKE HIGH SCHOOL, SAT., JULY 20

Some facts concerning this proposed school follow:

A. Election and tax information:

1. Election set for July 20, (Sat.) to ask voter approval of 10 mill levy to-construct and equip a school for 150 students at a total cost of \$278,000.
 - a. 10 mill levy is a one shot deal. One year will build the school, there is no interest to pay.
 - b. a 10 mill levy is about \$10 of taxes on an average \$10,000 home.
- (Authority-Missoula High School Board records and County Assessor's office.)

B. School site: (school to contain 8 class and lab rooms and offer 29 courses.)

1. High School Board left site choice up to local people.
 2. Local people chose present grade school site.
 3. Grade School site contains 10 acres plus 6 lots donated by N.W. Pacific Investments.
 4. N.W. Pacific Investments has offered choice of 10 more lots for high school purposes for \$1500 per lot.
 5. Majority of both school boards feel it advisable to purchase 5 lots of this additional land.
 6. Local grade school will pay part of cost of these lots.
 7. State board of health recommends but does not require 11 acres of land for this school.
 8. Site could be changed to property offered by Seeley Lake Pines, Inc.
- (Authority-Records of both school boards, state law, copies of letters.)

C. Children to be served:

1. 585 children in Seeley, Swan, Ovando area under 21.
 2. 204 children of pre-school age.
 3. 247 children in grade school.
 4. 134 eighth grade graduates under 21.
 - a. 75 of these attended high school last year.
 - b. 7 graduated from high school in 1963
 - c. 19 eighth grade graduates will enter high school this fall
 - d. 87 children from area should attend high school in '63-'64.
 - e. About 10 should graduate from high school in 1964.
 - f. 104 children should start new Seeley Lake school in 1964.
 - g. 104 children should start new Seeley Lake school in 1964.
 - h. Greenough and Potomac children are not in this survey.
- (Authority-1962 school census and school attendance records.)

D. Present set-up unsatisfactory.

1. Seeley Lake bus will be overcrowded this fall.
2. Two busses will be imperative by fall of 1964.
3. Bus covers 136 miles in about 5 hours daily.
4. Bus run totals 24,480 miles per year (distance around earth at equator)
5. Bus run takes about 900 hours per year (37.5 twenty-four hour days)
6. Children spend about 12 hours daily in school and bus ride.
7. Bus meets about 40 logging trucks each way every day.
8. No chance for teacher consultations or help.
9. No extra-curricular activities.
10. No provisions for Swan or Ovando children.
11. No provisions for Swan or Ovando children.

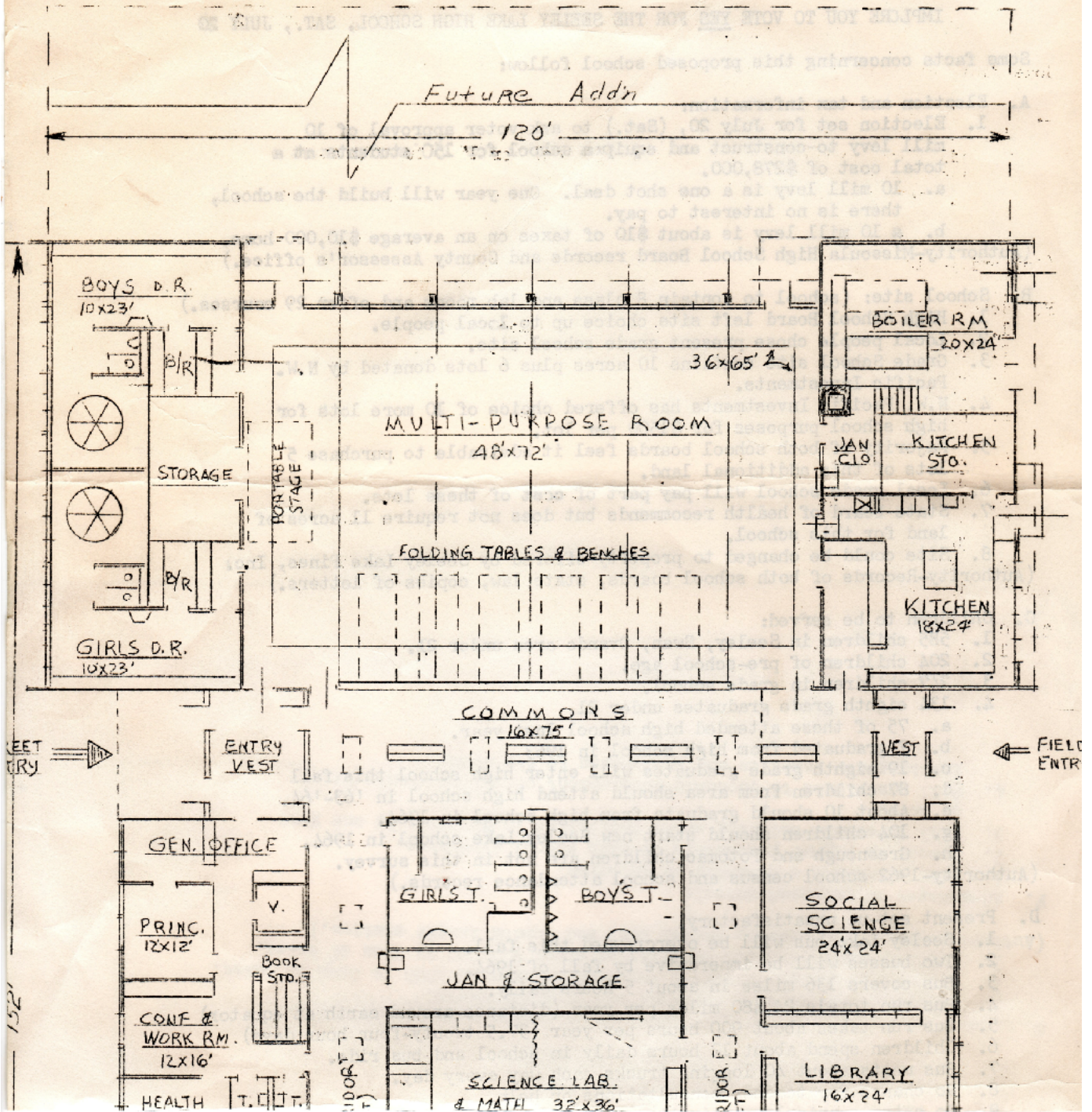
E. Area contributes over \$60,000 annually to county schools and roads.

1. Residents pay regular personal and property taxes.
 2. Seeley Lake Ranger District contributes over \$40,000 in lieu of taxes.
 3. Condon Ranger District contributes about \$20,000 in lieu of taxes.
- (Authority-Ranger Tom Coston, Seeley Lake and Condon Ranger station.)

F. Advantages of proposed school:

1. Will eliminate a hardship on children.
2. Result in higher percentage of high school graduates.
3. Will forestall building extra facilities in Missoula by one year or more.
4. Will contribute to economic development of entire county by inviting new families and businesses to the area.

PROPOSED FLOOR PLAN FOR SEELEY LAKE HIGH SCHOOL



MCHS Board Discusses Site for Seeley School

By JOHN A. FORSSEN

Missoula County High School trustees Tuesday night discussed the proposed site for a planned high school unit at Seeley Lake, on which taxpayers of the county will vote a week from Saturday.

The site which has received the most consideration, adjacent to the present grade school, may prove too expensive and may not provide enough room, trustees decided after an extensive discussion.

A proposal by Pacific Investments, owner of a subdivision adjacent to the grade school, calls for the firm to donate five res-

dential lots and another five to be purchased for \$1,500 each, with the high school board and the Seeley Lake school board to divide the \$7,500 cost.

Pacific Investments says the price of \$1,500 per lot is half the retail price.

Trustees gave some consideration to a 10-acre site about a mile away which has been offered free, but they also discovered at the meeting Tuesday night that regulations of the State Board of Health will require a total of 11 acres for the school.

Taxpayers of the county will vote July 20 on a 10-mill levy to raise some \$278,000 to build the satellite high school unit, which has been described as a Seeley-Swan attendance unit of Missoula County High School.

Trustees decided that the letter from Pacific Investments, signed by George F. Steinbrenner, was not clear on whether or not another strip of lots, to cost another \$7,500, must be purchased and planned to seek clarification of the offer.

The Seeley Lake elementary school is located on a 10-acre site. State Board of Health requirements call for a minimum of seven acres for a grade school of that size and 11 acres for a high school as proposed, making a total of 18 acres necessary if the high school

is built adjacent to the grade school.

In other action, the board awarded the Eddy Bakery a contract for about 5,500 1½-pound loaves of bread and some 1,600 packages of buns on a bid of 25 cents a loaf on the bread and 40 cents a package on the buns.

The only other bidder was Bon Ton Bakery at 26½ cents and 43 cents. Bon Ton had the contract last year at 26 cents and 43 cents.

Milk business was divided evenly among Community Creamery, Medo-Land Dairies and Missoula Creamery and Cold Storage, all of whom bid 6 cents per half pint, the price fixed by the State Milk Board. The milk business amounts to about \$1,200 a month.

The trustees granted use of the gymnasium-auditorium of the South avenue building for a concert by the Centennial State Chorus on June 13 of next year in connection with the Montana Territorial Centennial.

Principal Winston W. Wetzel, who was tardy due to an automobile accident on the way to the meeting, reported that the new football field at the fairgrounds will be ready for play in September, with the first home game, against North Central High School of Spokane, scheduled for Sept. 14. He said an \$1,800 electric score board, paid for by profits from soft drink machines in the high schools, will be ready for use.

Proposed Seeley School Sites to Be Inspected

By BOB OLSON

Two proposed sites for the new Seeley Lake branch of Missoula County High School were discussed at the Board of Trustees meeting Tuesday night at the South Avenue unit, but no action concerning selection was taken, pending a visit

to both sites by board members, representatives from Witwer and Price, architects, and representatives from the two groups offering to donate the building site.

The group will visit the sites prior to the August school board meeting, but a definite time was not set.

Two development corporations, Seeley Lake Pines Inc. and Seeley Lake Homesites, have made offers to donate land in their respective developments for construction of the Seeley Lake High School unit.

The board discussed many items relevant to the site selection, including availability of water, proximity of proposed new sites to the Seeley Lake Elementary School, and winter maintenance of access roads.

In other matters, the board canvassed the returns of the special levy election, arriving at a total of 1,430 votes for the levy and 797

votes opposing it. The board acted to include the \$278,000 raised by the levy in the budget for the 1963-64 school year.

The trustees also agreed to revise their application for Bureau of Land Management land to include only the west half of lot 4, section 30, township 13 north, range 19 west. They had formerly applied for the entire lot 4. This is federal land available for educational use at no cost to the taxpayer in the Ft. Missoula area.

Principal W. W. Wetzel said that Thomas F. Monahan, boys guidance counselor at MCHS for the past three years, had accepted a position with the placement bureau at Carroll College in Helena. He also stated that all staff positions for the 1963-64 school year have been filled.

This letter is to inform you that the Missoula County High School Board of Trustees has agreed to change the site of the Seeley Lake High School from the top of the hill, to the Anaconda Co. site, just across Morrell Creek, which will be approximately one-half mile closer to town and the grade school.

This land will have to be paid for by the citizens of the community. A committee, appointed at a public meeting October 1, was to try to determine the best possible way to do this. Committee members are: Alvin Rovero, Dick Duncan, Myrtle Eldridge, Stella Carey, Harold Brelji, Rueben Kauffman, Willard Carter.

After estimating the number of employees in the Seeley Lake, Swan Valley communities, and Ovando, we are asking for a payroll deduction, ON A VOLUNTARY BASIS, of \$5, or more, per family. THIS IS TAX DEDUCTIBLE.

All money collected will be held for the Seeley Lake High School Land Fund, until all collections are in, by the Seeley Lake P.T.A. Checks or money orders from individuals wishing to contribute, other than those who may be included on the payroll plan, may be made out to the Seeley Lake High School Land Fund.

Any money raised above the amount needed will be used towards the purchase of equipment or furnishings for the Seeley Lake High School.

The names of all contributors will be compiled, and filed in the record, that they have personally made this high school possible.

Time is of the essence. The School Board would naturally like to have the deed for the property before any construction begins. If we are to have our high school in operation by fall of 1964, there CANNOT be any more delay than is necessary.

PLEASE SIGN AND RETURN TO YOUR EMPLOYER.

I HAVE PLEDGED \$_____ FROM MY SALARY OR BUSINESS, TO GO TO THE SEELEY LAKE HIGH SCHOOL LAND FUND, TO BE DEDUCTED FROM MY PAY CHECK.

SIGNED

LET'S PUT THE GROUND UNDER OUR SCHOOL