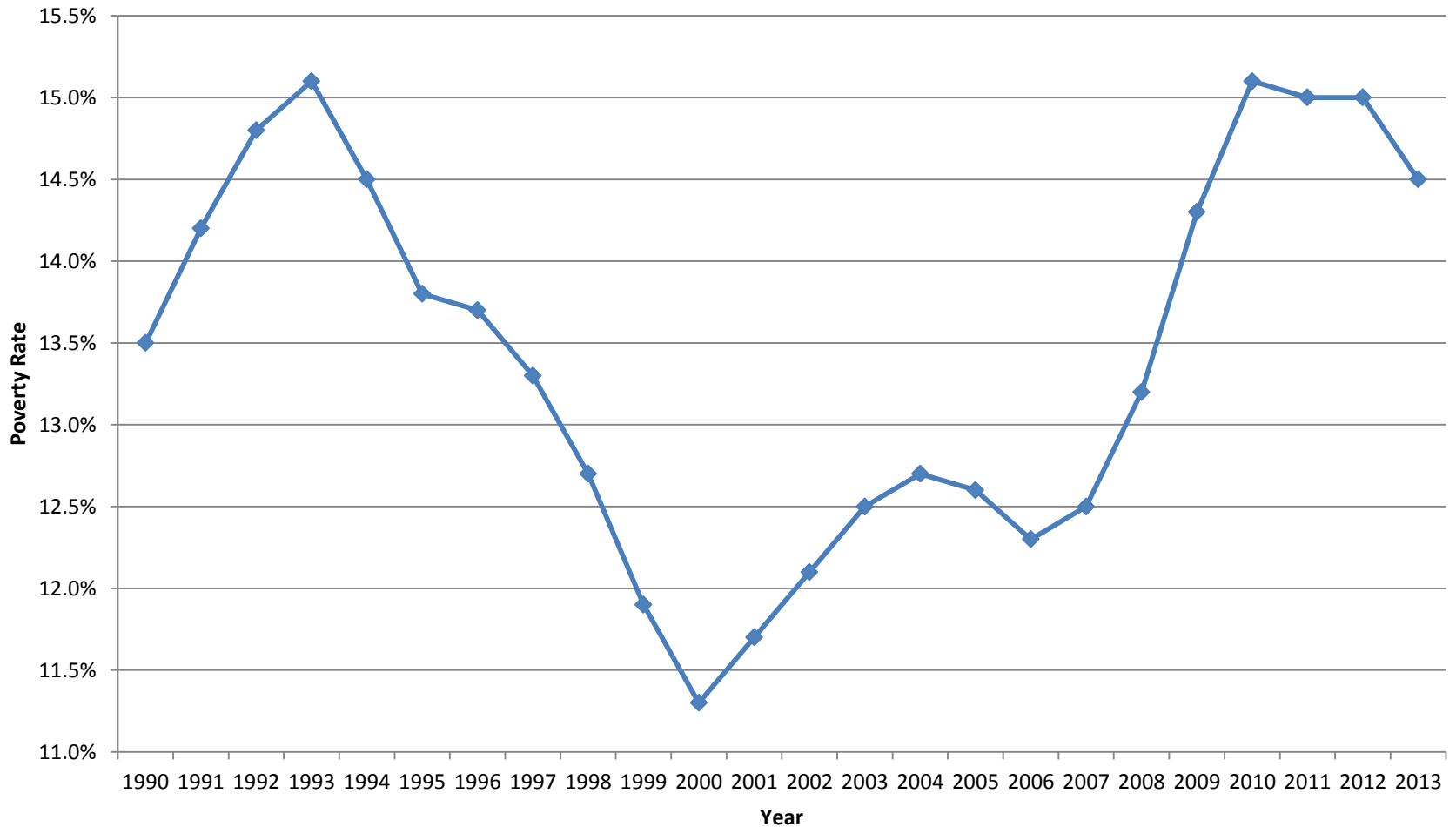


A Tale of Two Decades: Post-welfare reform progress reversed

U.S. Official Poverty Rate, 1990-2013

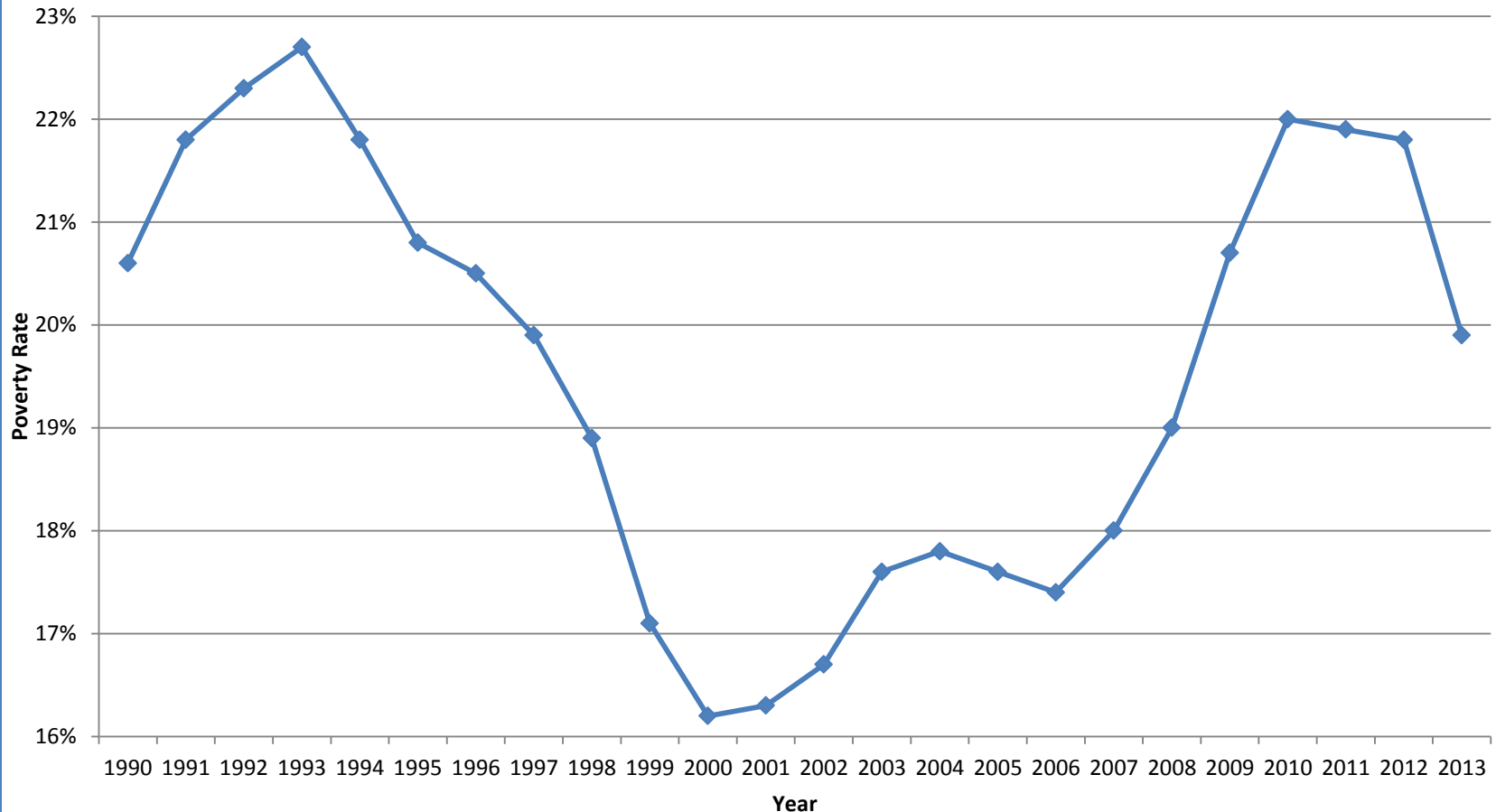


Note: The official poverty measure used in this graph calculates income without taking into account non-cash benefits (such as the Supplemental Nutrition Assistance Program and housing assistance) or post-tax welfare (such as the Earned Income Tax Credit), and therefore is not an accurate measure of material hardship. It is, however, a good indication of the extent to which Americans are independently earning their income.

Data: U.S. Bureau of the Census, Current Population Survey, Annual Social and Economic Supplements' Official U.S. Poverty Rate

A Tale of Two Decades: Post-welfare reform progress reversed

U.S. Official Child Poverty Rate, 1990-2013

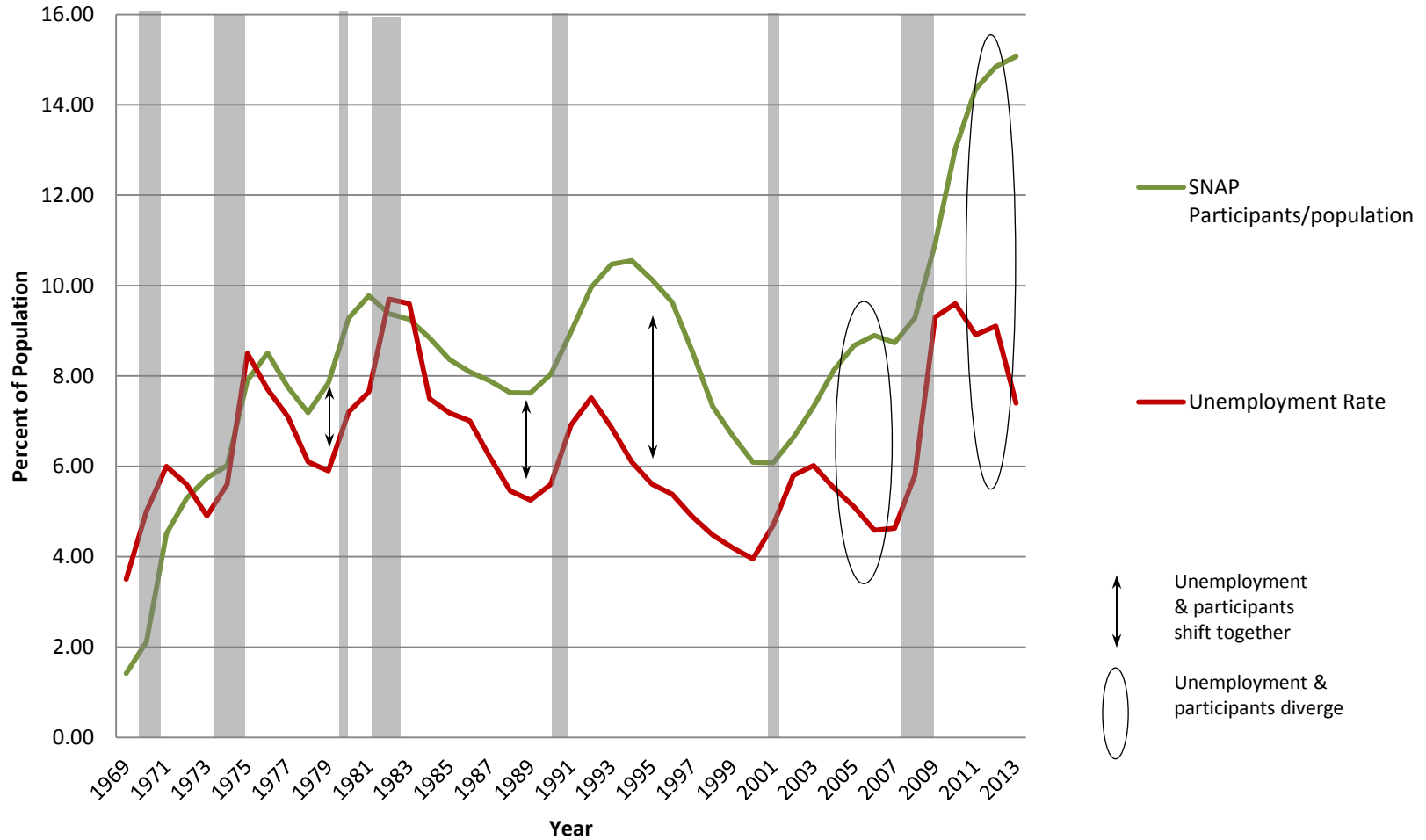


Note: The official poverty measure used in this graph calculates income without taking into account non-cash benefits (such as the Supplemental Nutrition Assistance Program and housing assistance) or post-tax welfare (such as the Earned Income Tax Credit), and therefore is not an accurate measure of material hardship. It is, however, a good indication of the extent to which Americans are independently earning their income.

Data: U.S. Bureau of the Census, Current Population Survey, Annual Social and Economic Supplements' Official U.S. Poverty Rate for individuals under 18 years

A Tale of Two Decades: Post-welfare reform progress reversed

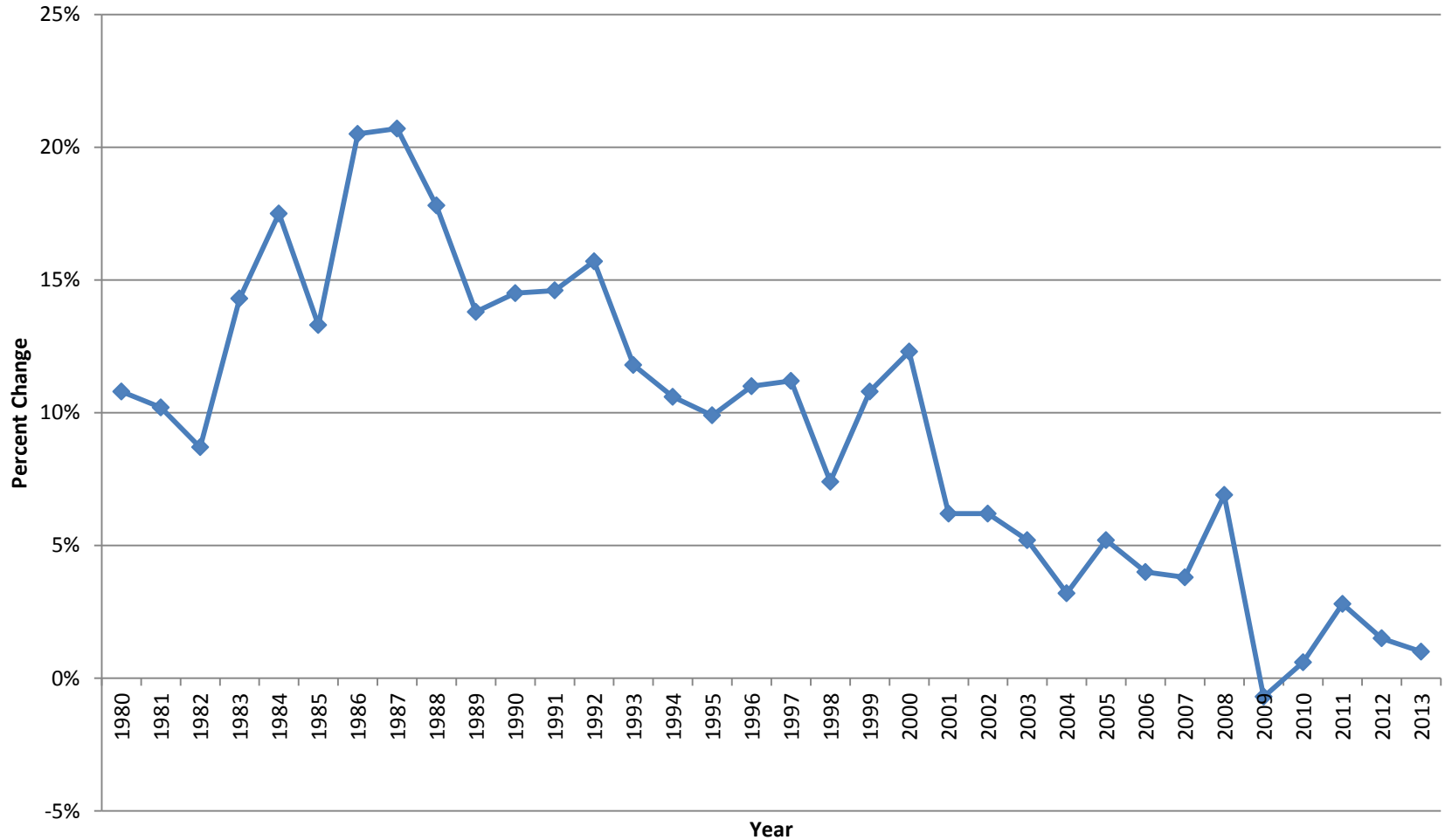
SNAP Trends Through Recessions, 1969-2013



A Tale of Two Decades: Post-welfare reform progress reversed

U.S. Child Support: % Change in Total Distributed Collections, 1980-2013

Focus on responsibility diminishes



Data: U.S. Department of Health & Human Services, Administration for Children & Families